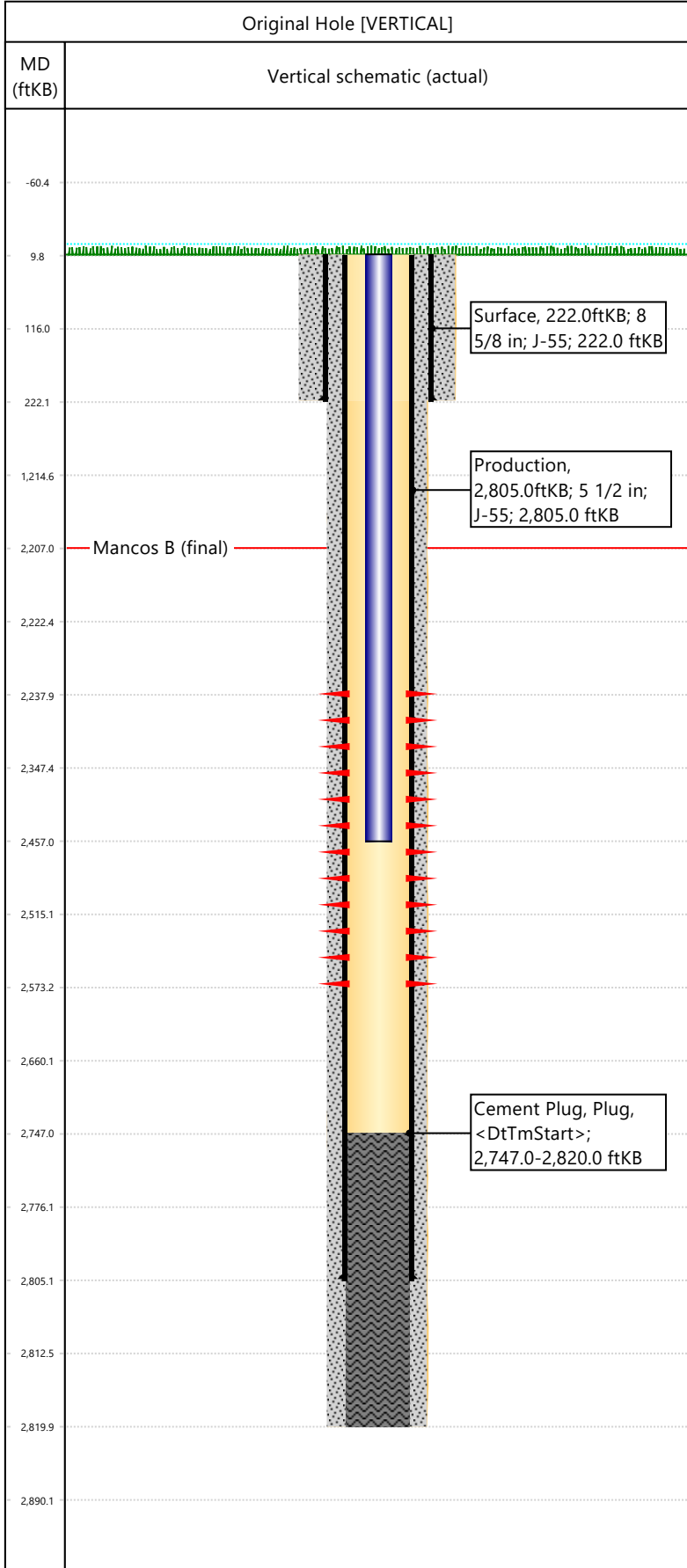


Well Name: DRAGON TRAIL UN 1136

API/UWI 05103094570000	Surface Legal Location 03-03S-102W	Field Name Dragon Trail	License #	State/Province CO	Well Configuration Type VERTICAL
Original KB Elevation (ft) 6,501	KB-Tubing Head Distance (ft)	Spud Date 6/19/1990 00:00	Rig Release Date	PBTD (All) (KB)	Total Depth All (TVD) (KB)



Hole Size						
Section Description	Size (in)	Bottom Depth (ftKB)				
Surface	12 1/4	222.0				
Section Description	Size (in)	Bottom Depth (ftKB)				
Production	7 7/8	2,820.0				
Formations						
Formation Name				Final Top MD (ftKB)		
Mancos B				2,207.0		
Casing Strings						
Csg Des	OD (in)	Wt/Len (lb/ft)	Grade	Set Depth (ftKB)		
Surface	8 5/8	24.00	J-55	222.0		
Production	5 1/2	15.50	J-55	2,805.0		
Perforations						
Date	Top (ftKB)	Btm (ftKB)	Zone			
7/23/1990	2238	2573	Mancos B, Original Hole			
Total						
Tubing Strings						
Tubing Description	Run Date	String Length (ft)	Set Depth (ftKB)			
Tubing - Production	7/23/1990	2,447.00	2,457.0			
Item Des	Icon	Jts	OD (in)	Wt (lb/ft)	Grade	Len (ft)
Tubing			1.9	2.76	J-55	2447
Rod Strings						
Rod Description	Run Date	String Length (ft)	Set Depth (ftKB)			
Item Des	Icon	Jts	OD (in)	Wt (lb/ft)	Grade	Len (ft)
Other In Hole						
Des	Icon	OD (in)	Top (ftKB)	Btm (ftKB)	Run Date	Pull Date
Cement						
Description	Proposed/Actual Run	Type	Top Depth (ftKB)			
Surface Casing Cement	Actual	Casing	10.0			
Production Casing Cement	Actual	Casing	10.0			
Cement Plug	Actual	Plug	2,747.0			