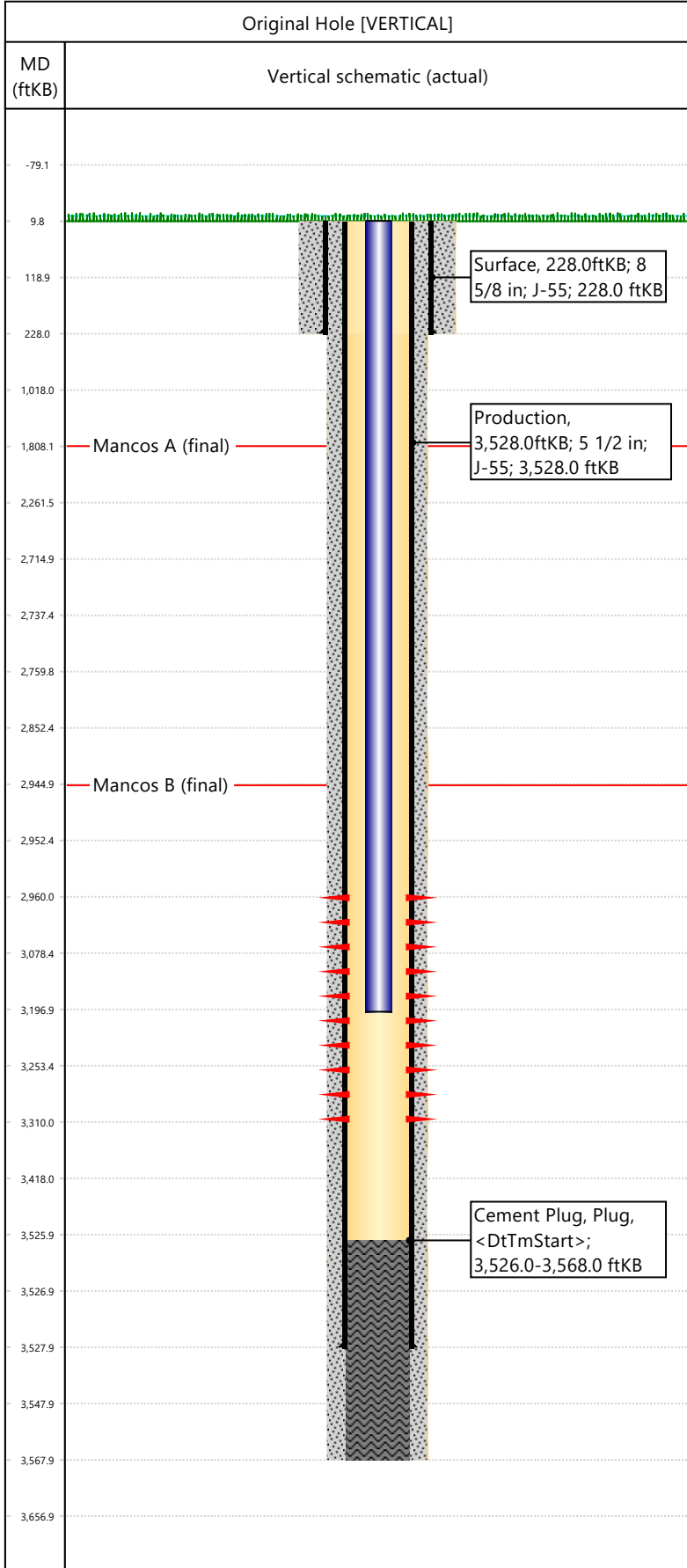


Well Name: DRAGON TRAIL UN 1122

API/UWI 05103093710000	Surface Legal Location 33-02S-102W	Field Name Dragon Trail	License #	State/Province CO	Well Configuration Type VERTICAL
Original KB Elevation (ft) 6,930	KB-Tubing Head Distance (ft)	Spud Date 5/25/1989 00:00	Rig Release Date	PBTD (All) (KB)	Total Depth All (TVD) (KB)



Hole Size			
Section Description	Size (in)	Bottom Depth (ftKB)	
Surface	12 1/4	228.0	
Section Description	Size (in)	Bottom Depth (ftKB)	
Production	7 7/8	3,568.0	
Formations			
Formation Name	Final Top MD (ftKB)		
Mancos A	1,808.0		
Formation Name	Final Top MD (ftKB)		
Mancos B	2,945.0		
Casing Strings			
Csg Des	OD (in)	Wt/Len (lb/ft)	Grade
Surface	8 5/8	24.00	J-55
Production	5 1/2	15.50	J-55
			Set Depth (ftKB)
			228.0
			3,528.0
Perforations			
Date	Top (ftKB)	Btm (ftKB)	Zone
7/12/1989	2960	3310	
Total			
Tubing Strings			
Tubing Description	Run Date	String Length (ft)	Set Depth (ftKB)
Tubing - Production	7/12/1989	3,187.00	3,197.0
Item Des	Icon	Jts	OD (in)
Tubing			1.9
			Wt (lb/ft)
			2.76
			Grade
			J-55
			Len (ft)
			3187
Rod Strings			
Rod Description	Run Date	String Length (ft)	Set Depth (ftKB)
Item Des	Icon	Jts	OD (in)
			Wt (lb/ft)
			Grade
			Len (ft)
Other In Hole			
Des	Icon	OD (in)	Top (ftKB)
			Btm (ftKB)
			Run Date
			Pull Date
Cement			
Description	Proposed/Actual Run	Type	Top Depth (ftKB)
Production Casing Cement	Actual	Casing	10.0
Description	Proposed/Actual Run	Type	Top Depth (ftKB)
Cement Plug	Actual	Plug	3,526.0
Description	Proposed/Actual Run	Type	Top Depth (ftKB)
Surface Casing Cement	Actual	Casing	10.0