

Final Reclamation Inspection

August 20th, 2025

Operator: Kerr McGee Oil & Gas Onshore - 47120

Location ID: 332086

Inspection Document #: 714002797

Weld County, CO

Corey Mcdonough
Reclamation Specialist, ECMC



COLORADO

**Energy & Carbon Management
Commission**

Department of Natural Resources

Inspection Photos

Location Name: Rusch 33-15

Location ID: 332086

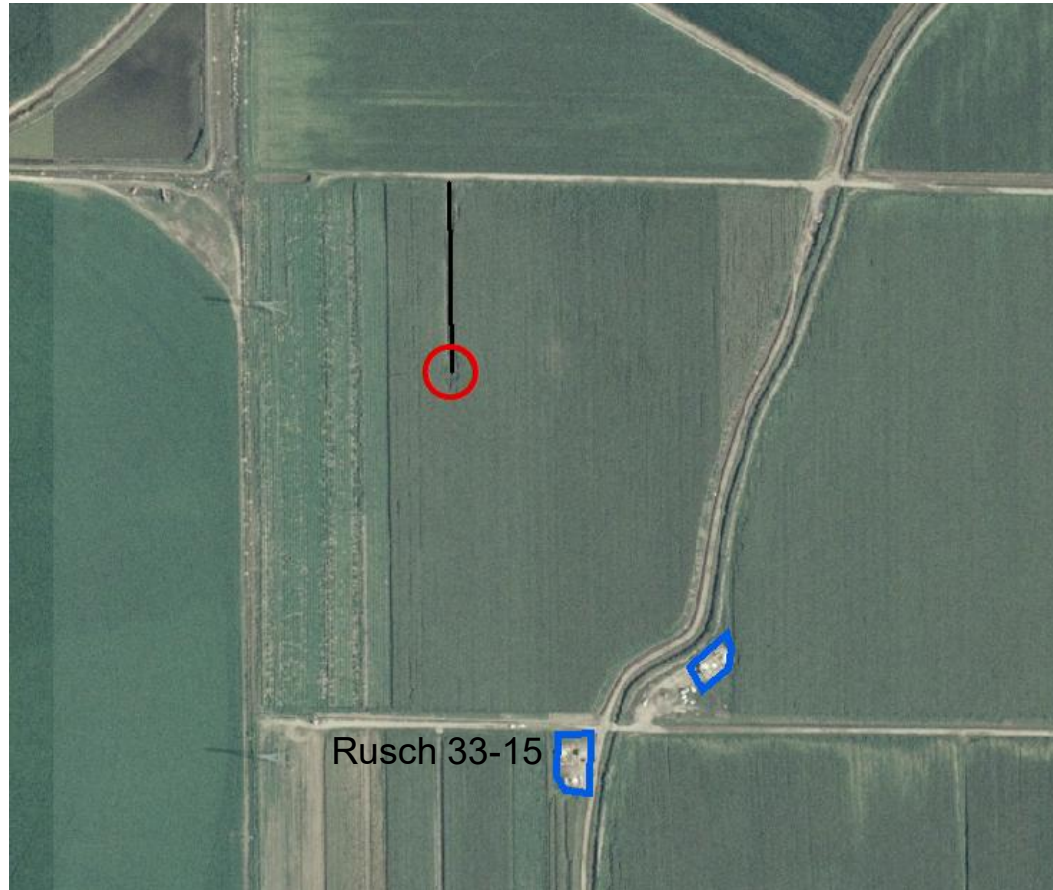


Photo 1. NAIP aerial imagery (2005) illustrating the well location (red circle), associated tank battery location (blue polygon with label), and well access road.



Inspection Photos

Location Name: Rusch 33-15

Location ID: 332086



Photo 2. Orthomosaic (drone) imagery taken 8/20/2025 and NAIP aerial imagery (2023) illustrating the well location (red circle) and associated tank battery (blue polygon).





Photo 3. Drone aerial imagery taken south of well location, facing north (displaying the well and access road).



Photo 4. Drone aerial imagery taken west of well location, facing east (displaying the well, access road, and presumed flowline location).



Photo 5. Drone aerial imagery taken north of well location, facing south (displaying the well, TB, access road, and presumed flowline).



Photo 6. Drone aerial imagery taken east of well location, facing west (displaying the well and access road). Crop vegetation at the well pad and access road appears consistent with adjacent reference areas.



Photo 7. Drone aerial imagery taken northwest of well location, facing southeast (displaying the well, and presumed flowline location).



Photo 8. Drone aerial imagery taken south of the TB location, facing north (displaying the TB, well and presumed flowline). Crop establishment issues observed at the well pad, area does not appear consistent with adjacent reference areas.



Photo 9. Drone aerial imagery taken west of the TB location, facing east (displaying the TB).

Inspection Photos

Location Name: Rusch 33-15

Location ID: 332086



Photo 10. Drone aerial imagery taken north of the TB location, facing south (displaying the TB).





Photo 11. Drone aerial imagery taken east of the TB location, facing west (displaying the TB).

Inspection Photos

Location Name: Rusch 33-15

Location ID: 332086



Photo 12. Drone aerial imagery taken east of the TB location, facing west (displaying the TB).





Photo 13. Drone aerial imagery taken from above the TB location, facing downward (displaying stunted corn at the edge of the field).