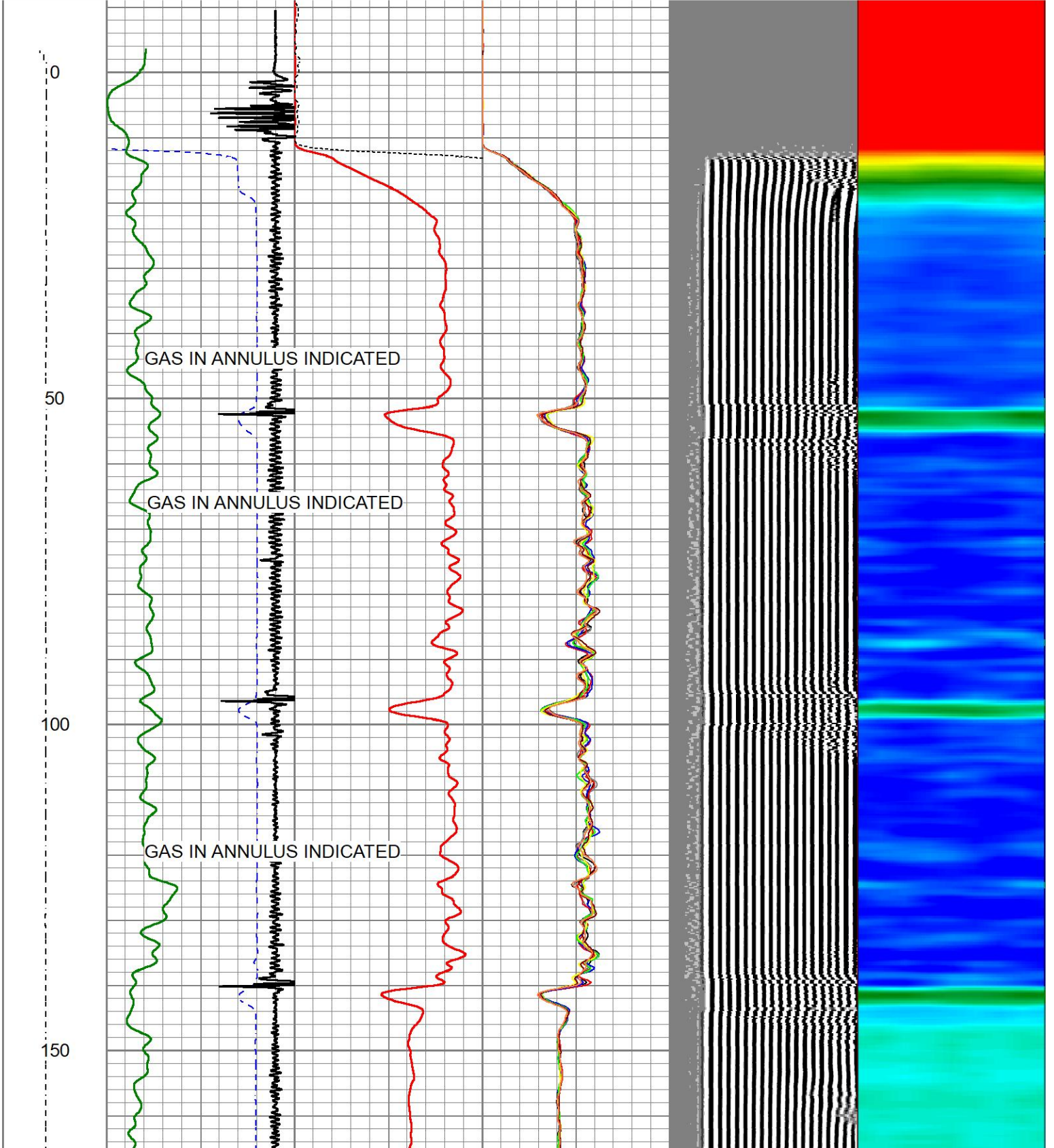
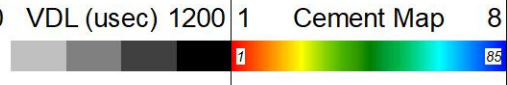


LSPD	650	TT (usec)	150	0	AMP (mV)	100	0	AMPS1	150	200	VDL (usec)	1200	1	Cement Map	8
(ft/min)	-9	CCL	1	0	AMPx5 (mV)	20	0	AMPS2	150						
0	-250	0	GR (GAPI)	150				AMPS3	150						
		150	GR (GAPI)	500				AMPS4	150						
								AMPS5	150						
								AMPS6	150						
								AMPS7	150						
								AMPS8	150						

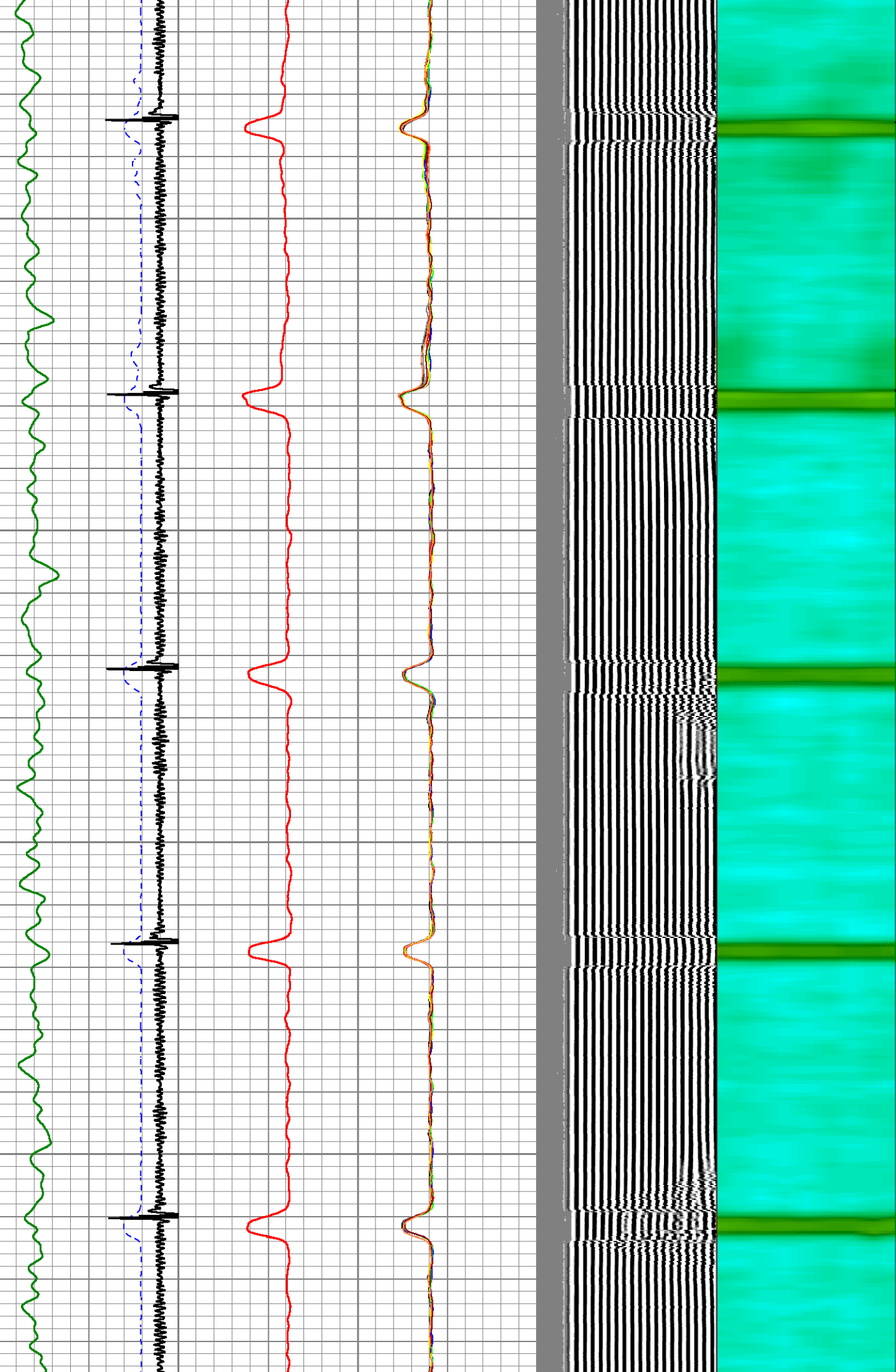


200

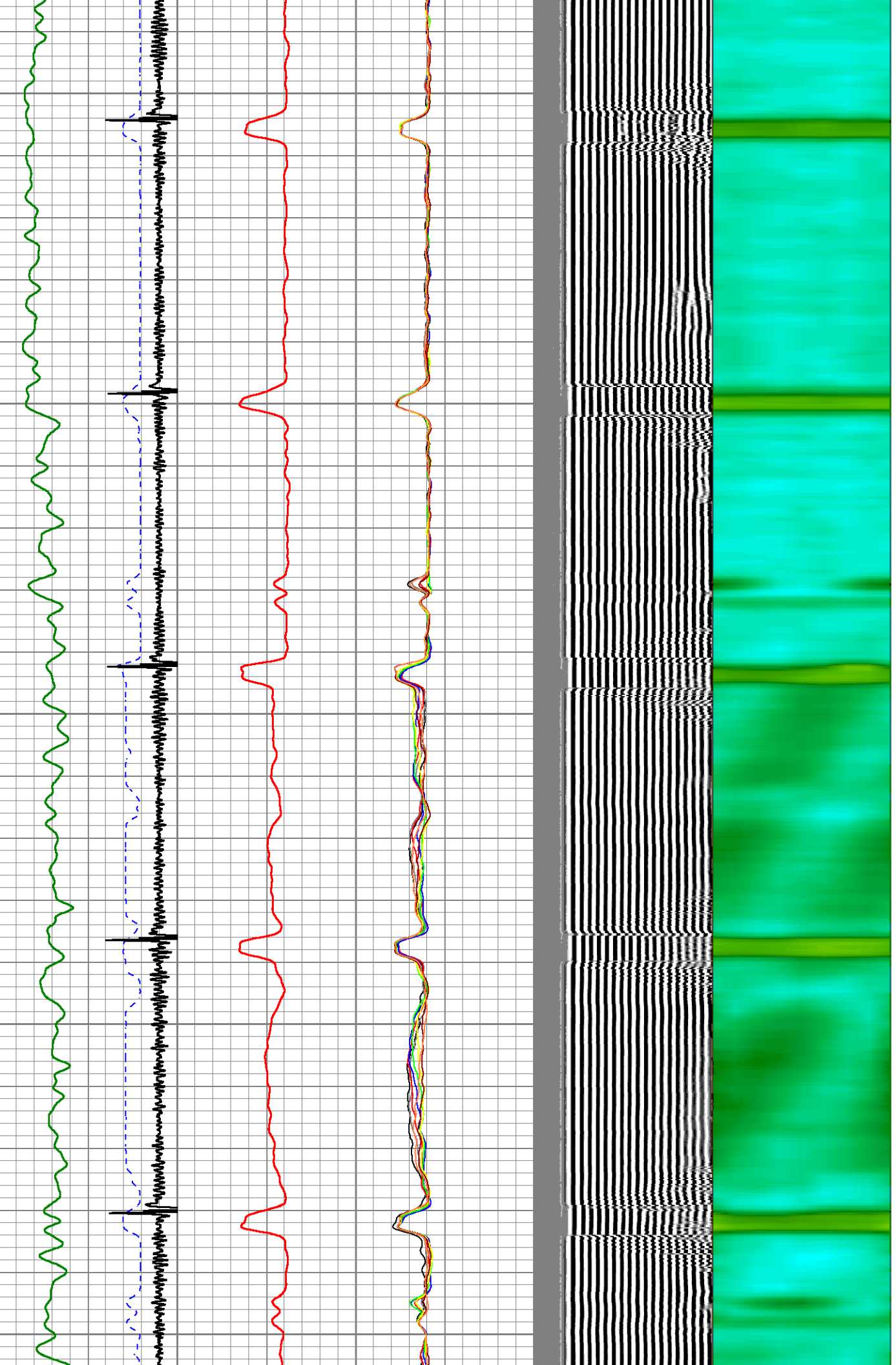
250

300

350



400
450
500
550
600

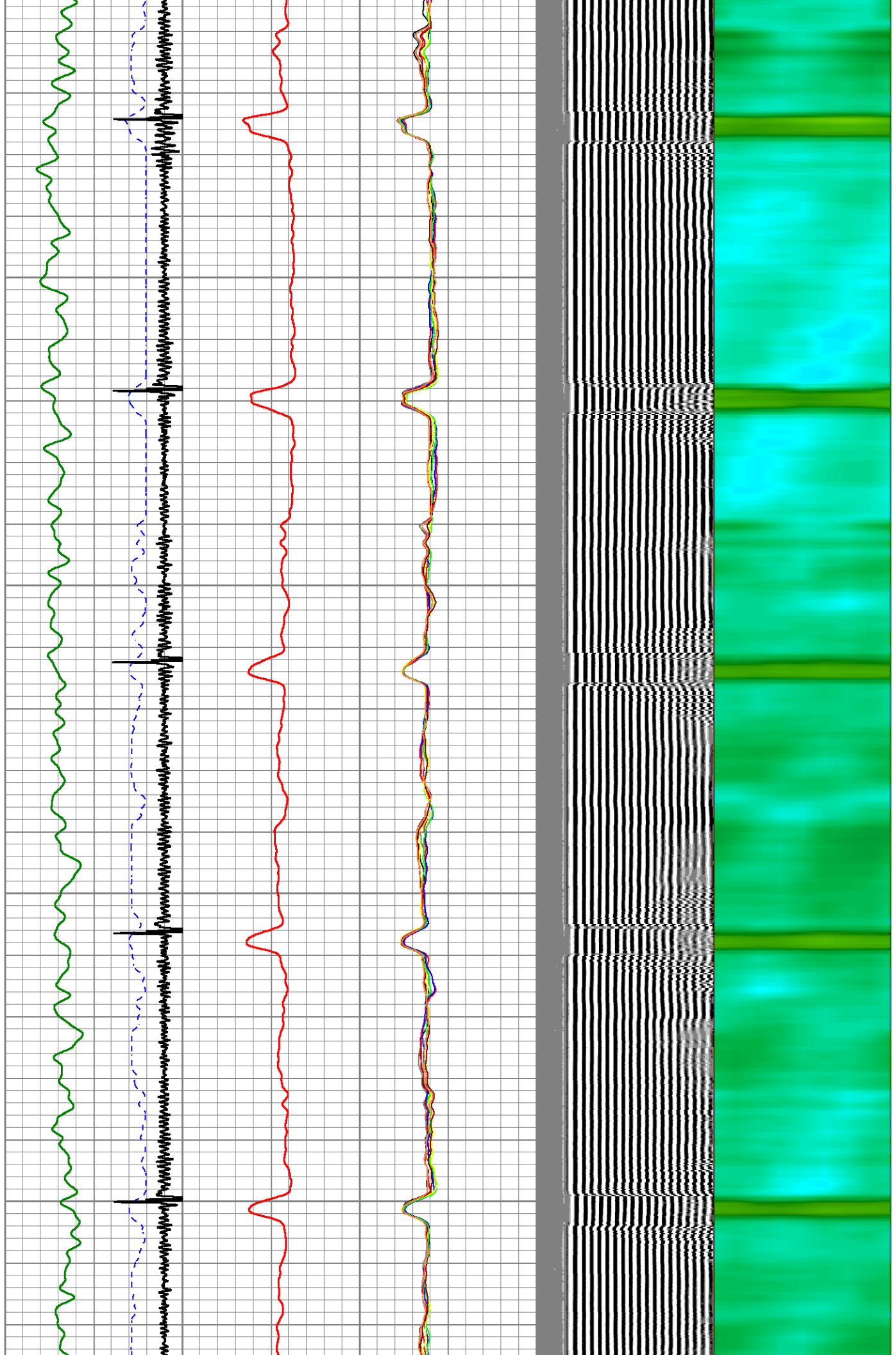


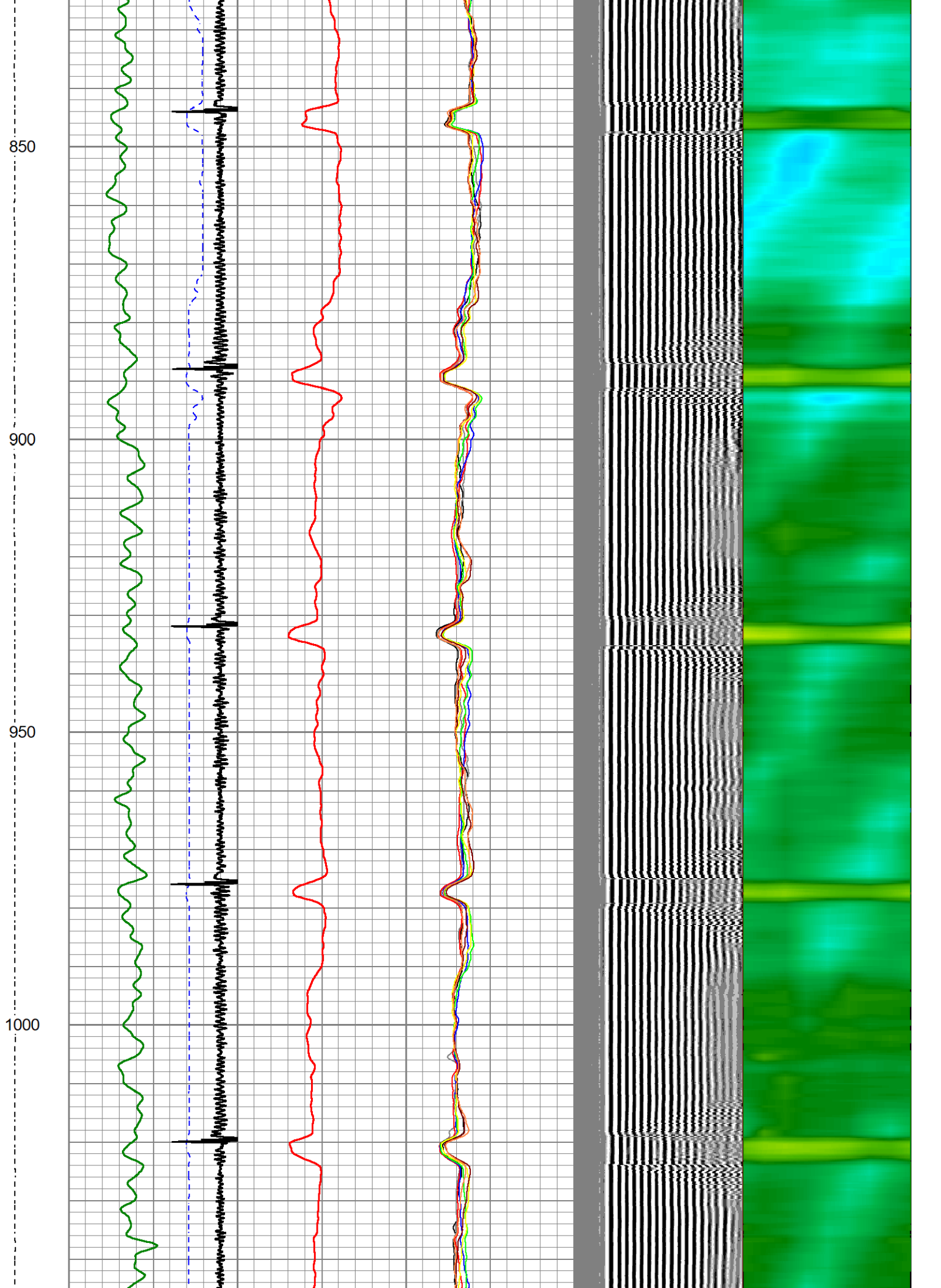
650

700

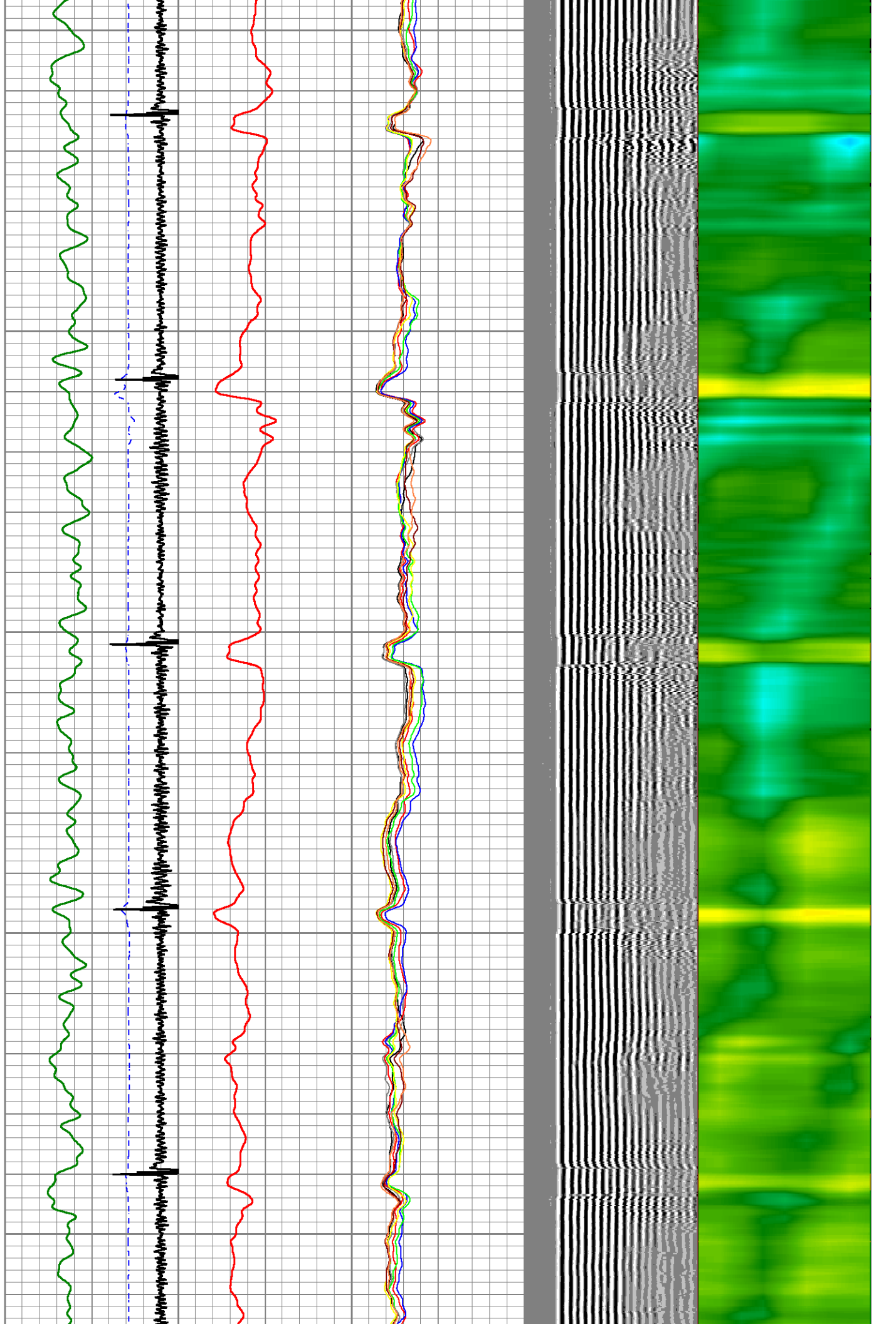
750

800





1050
1100
1150
1200
1250

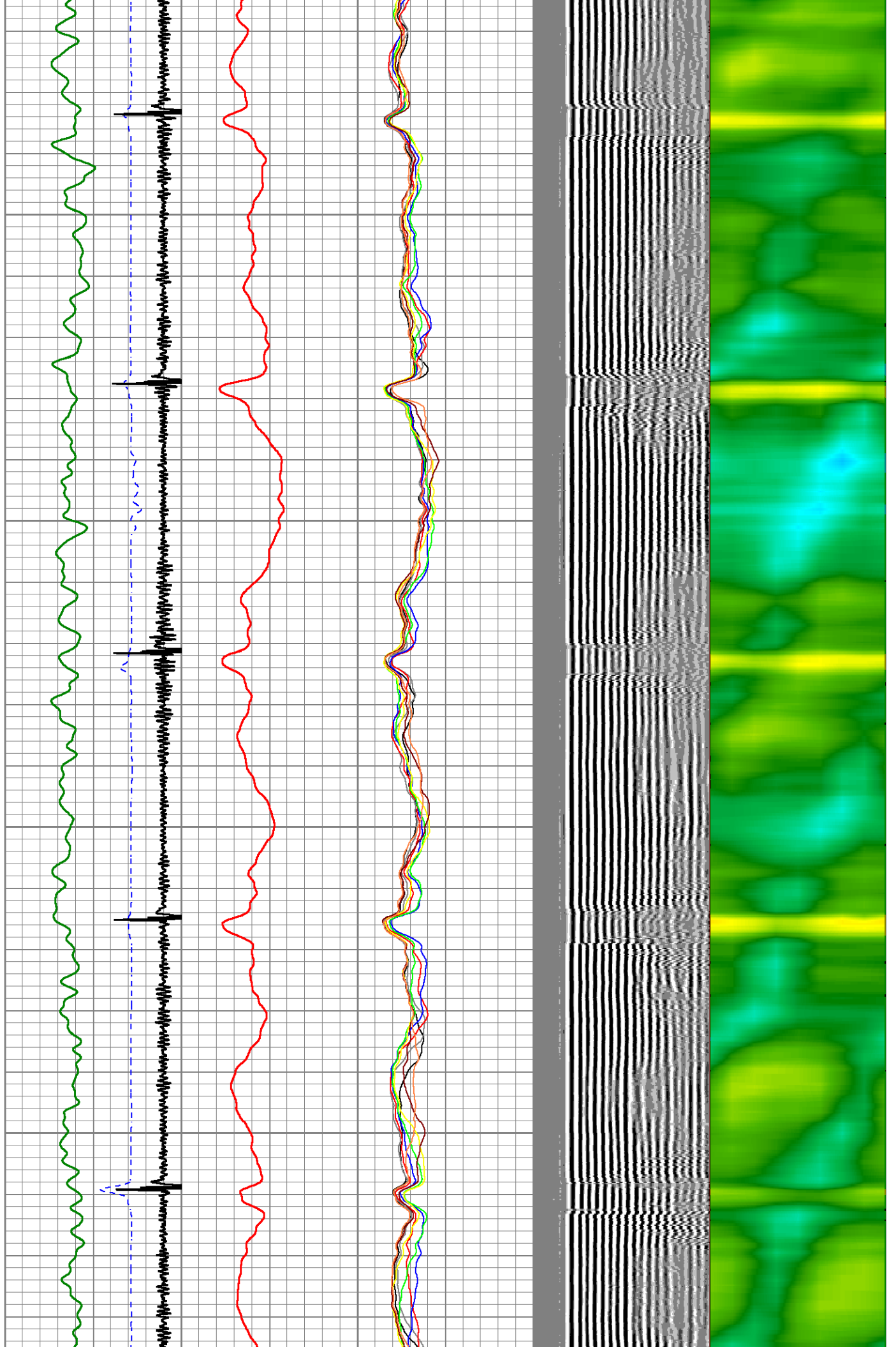


1300

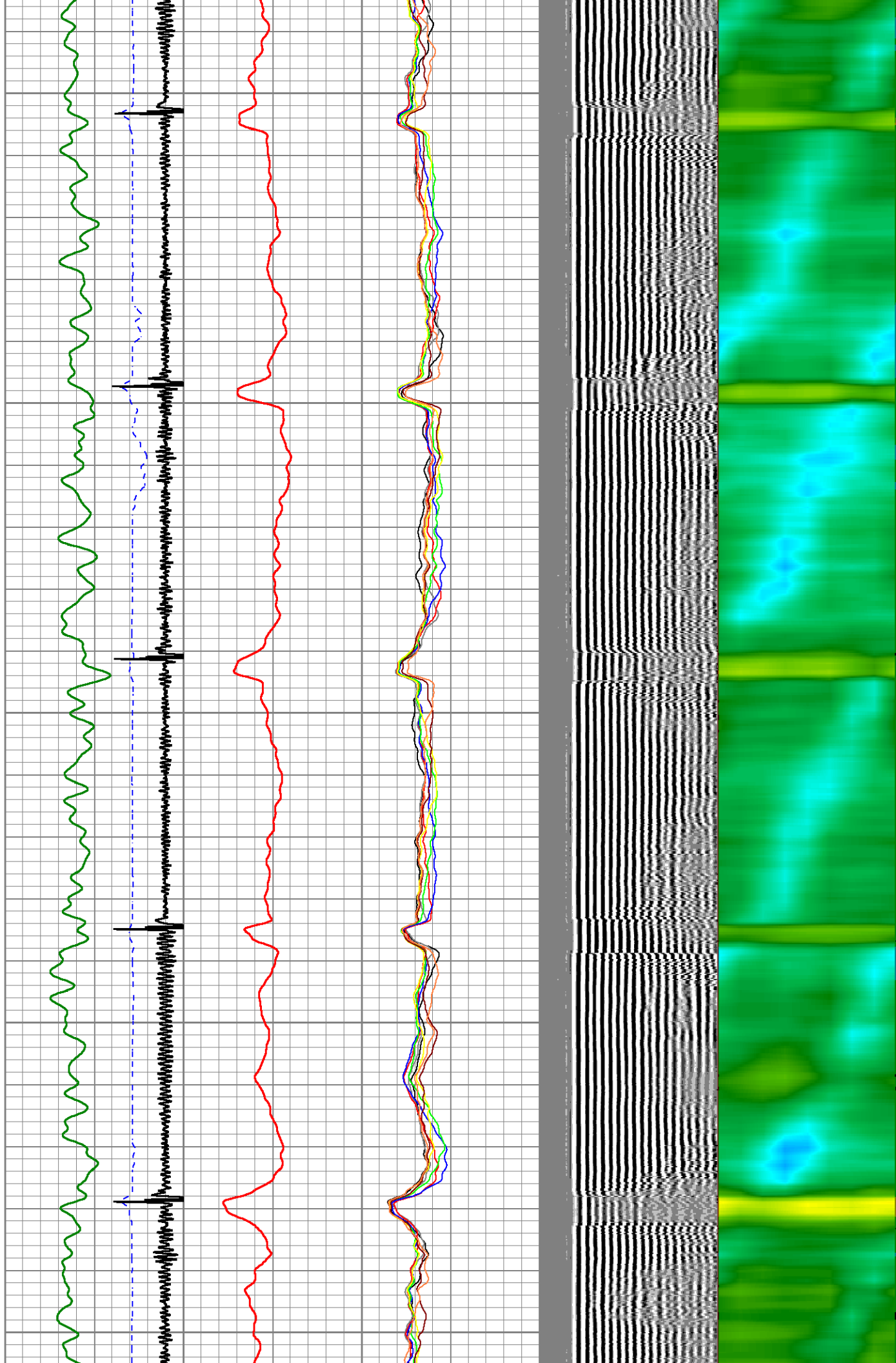
1350

1400

1450



1500
1550
1600
1650
1700

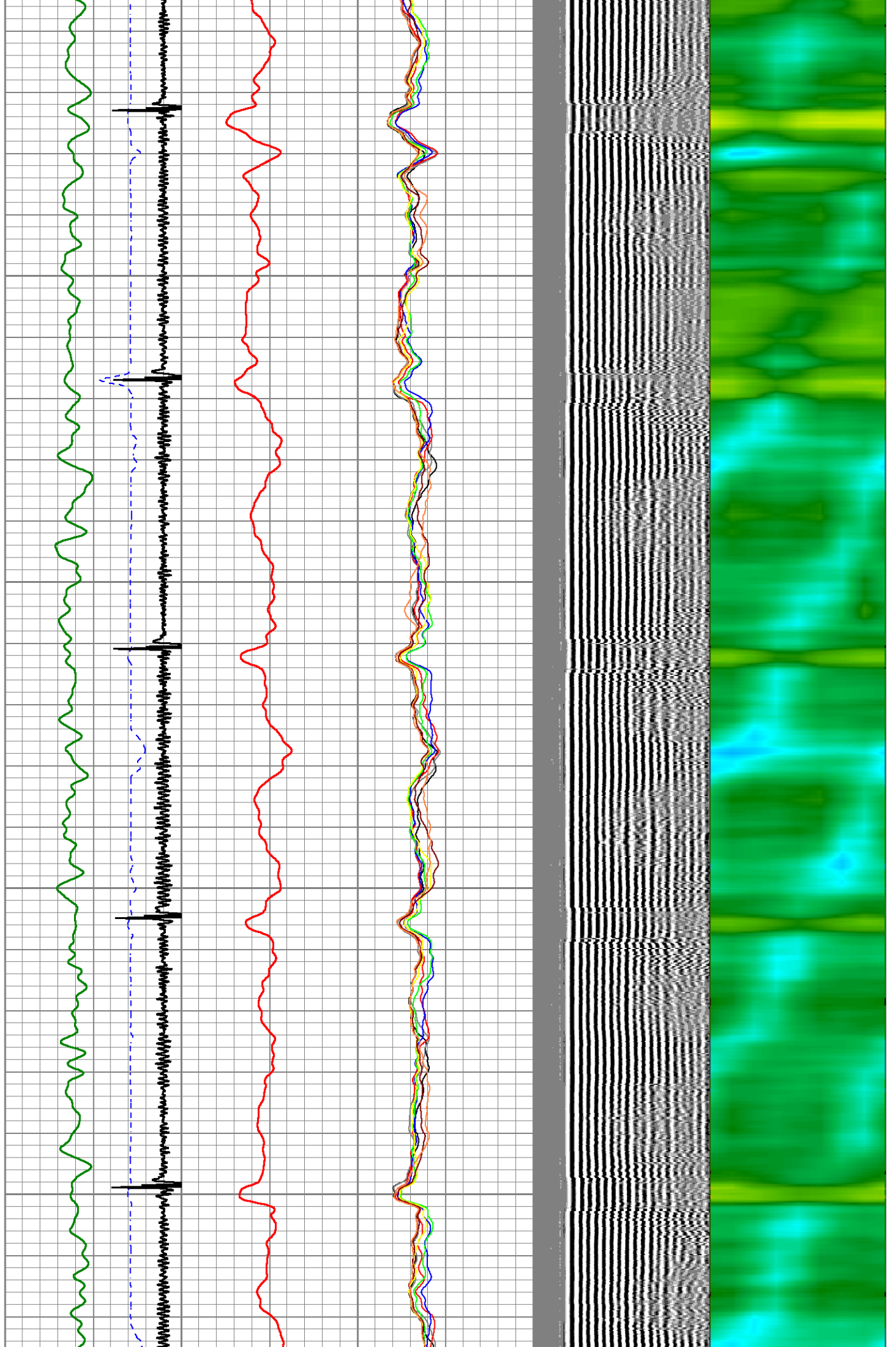


1750

1800

1850

1900

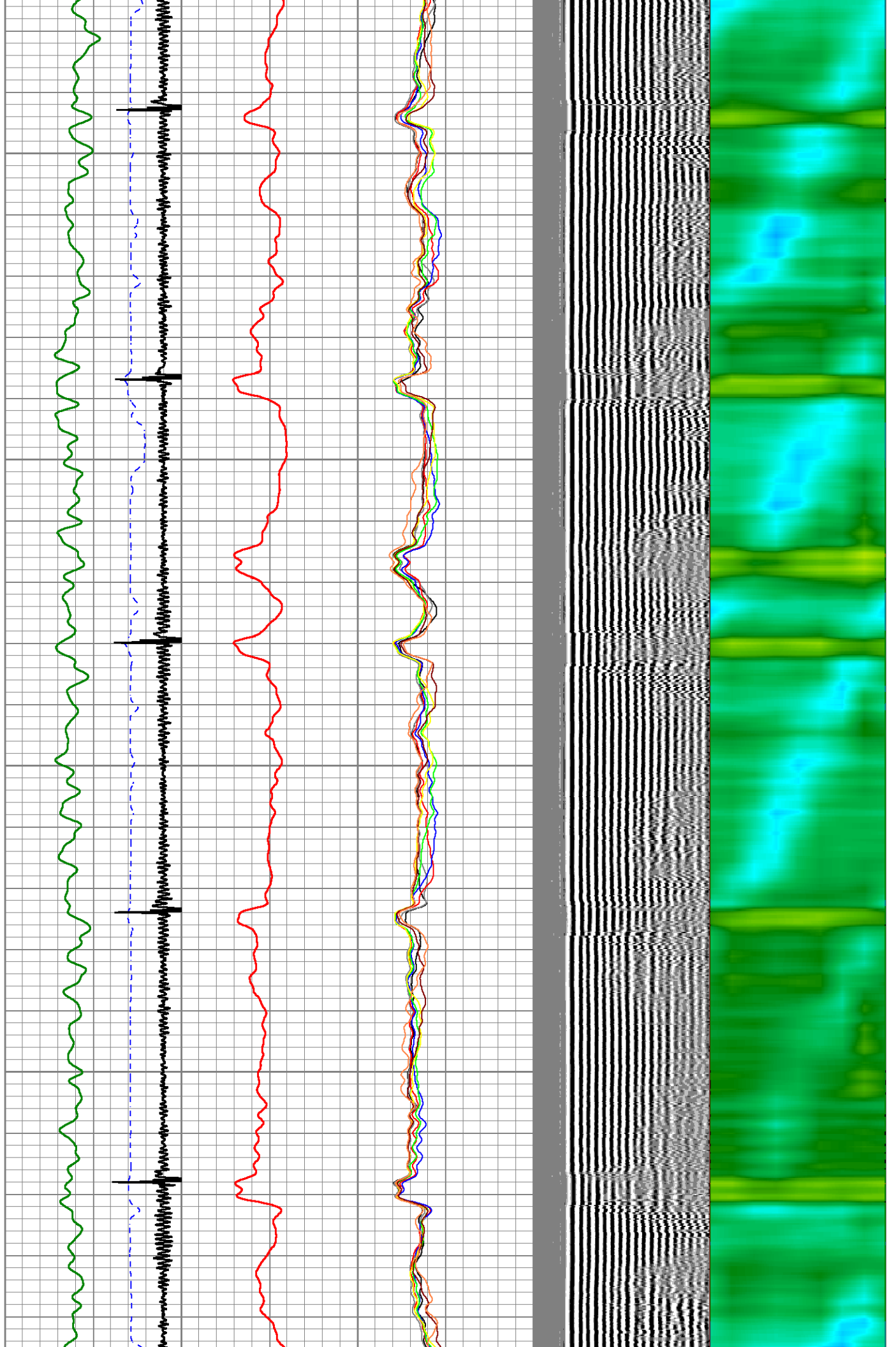


1950

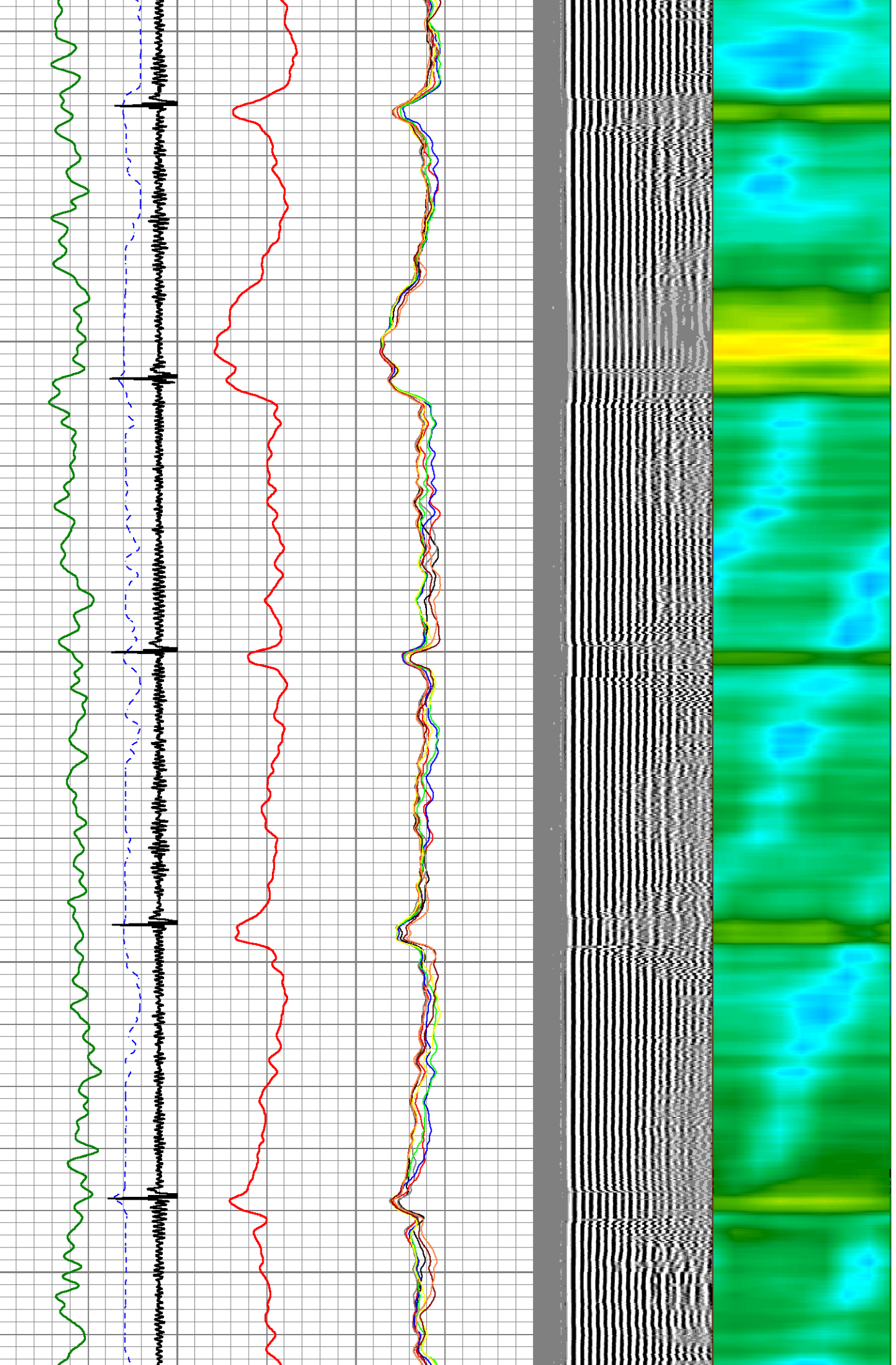
2000

2050

2100



2150
2200
2250
2300
2350

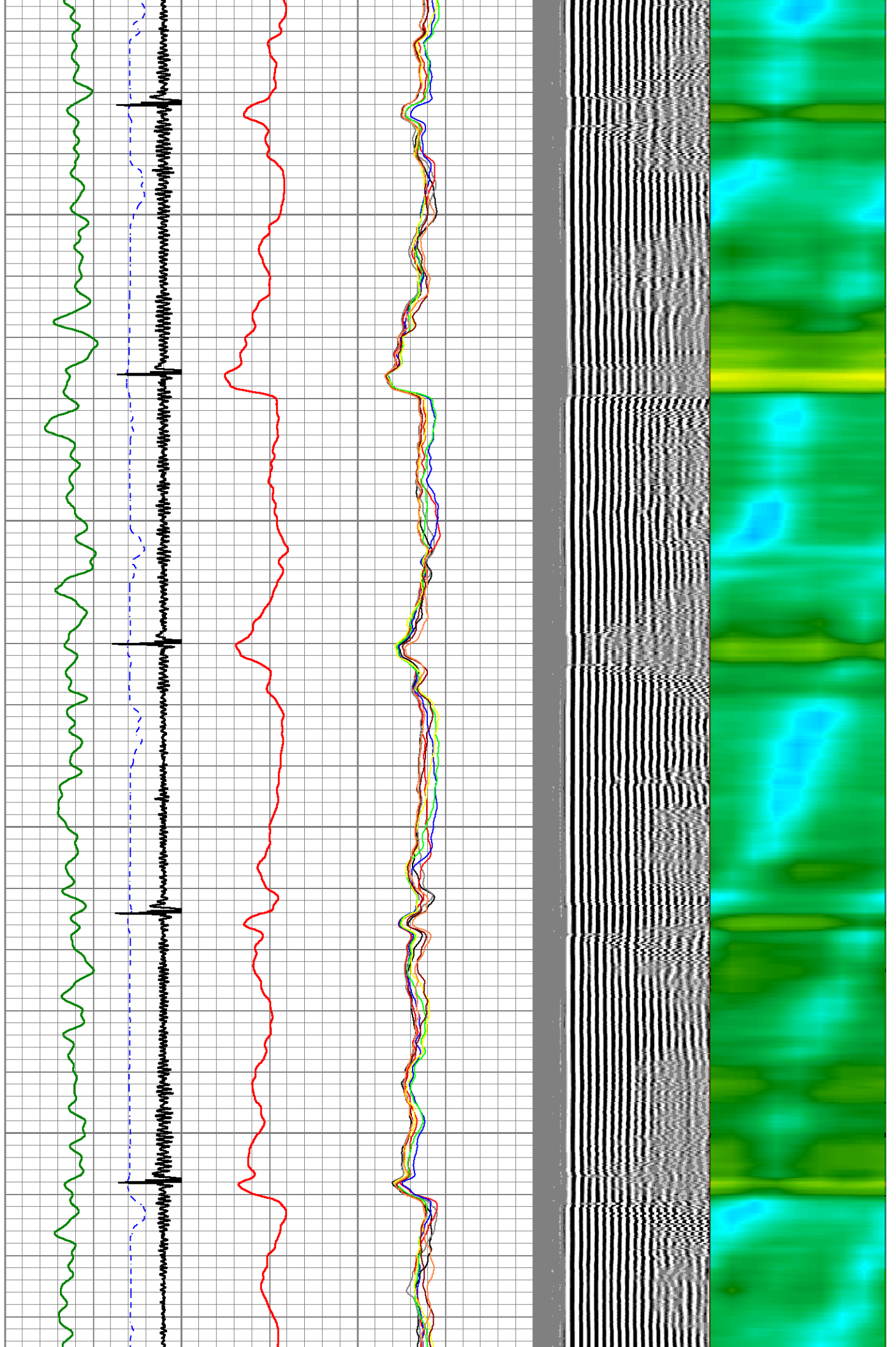


2400

2450

2500

2550



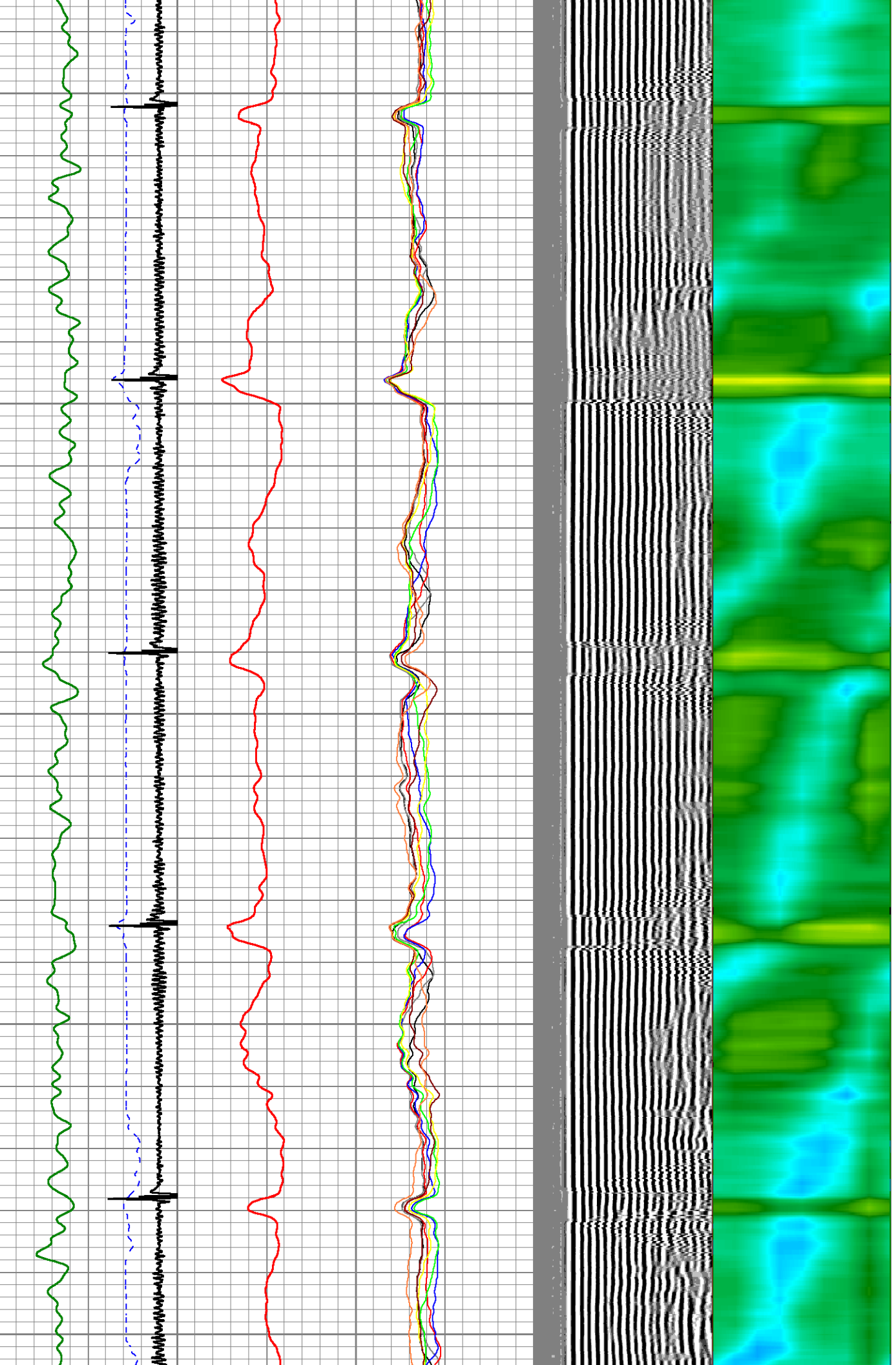
2600

2650

2700

2750

2800

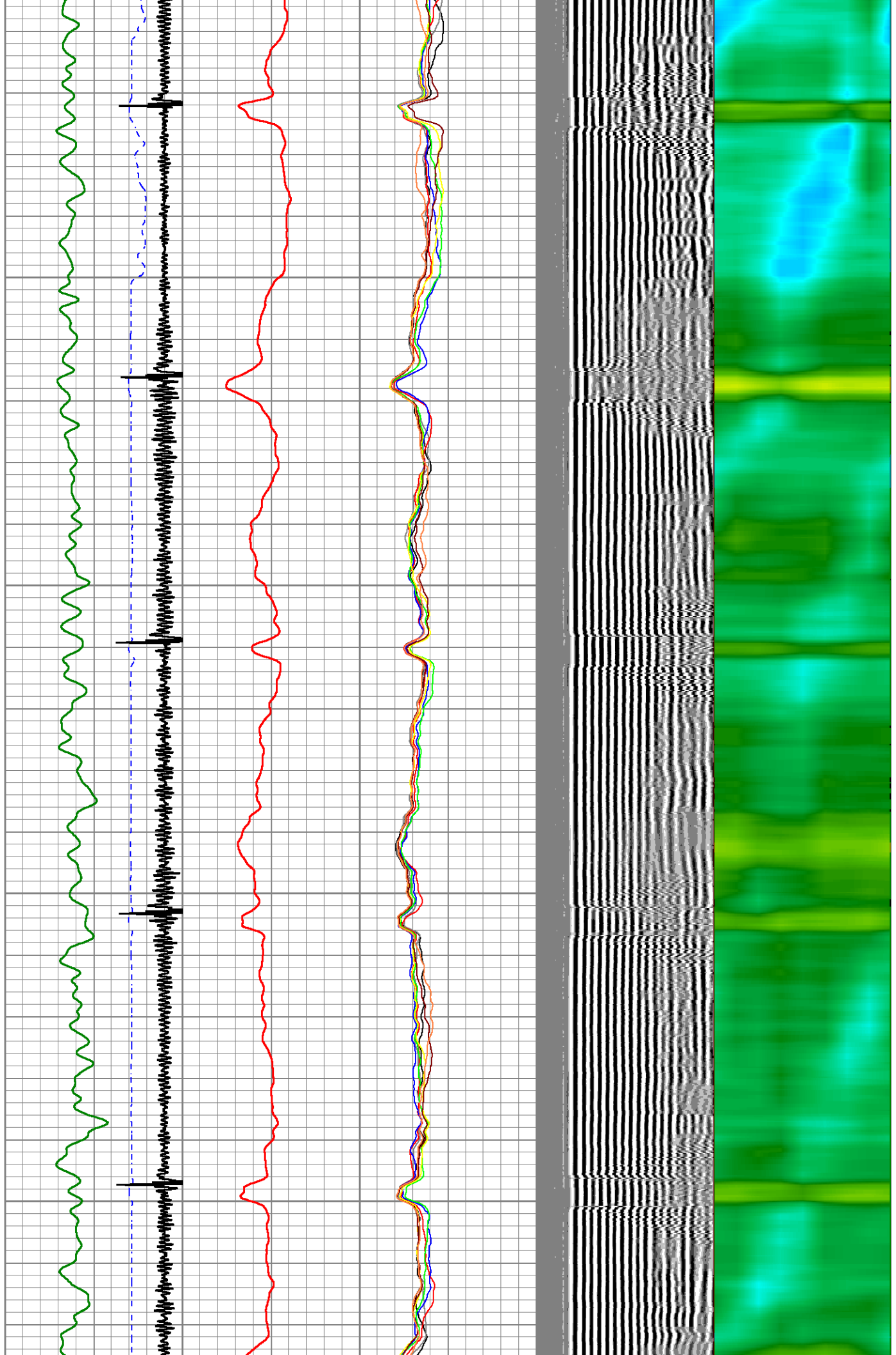


2850

2900

2950

3000

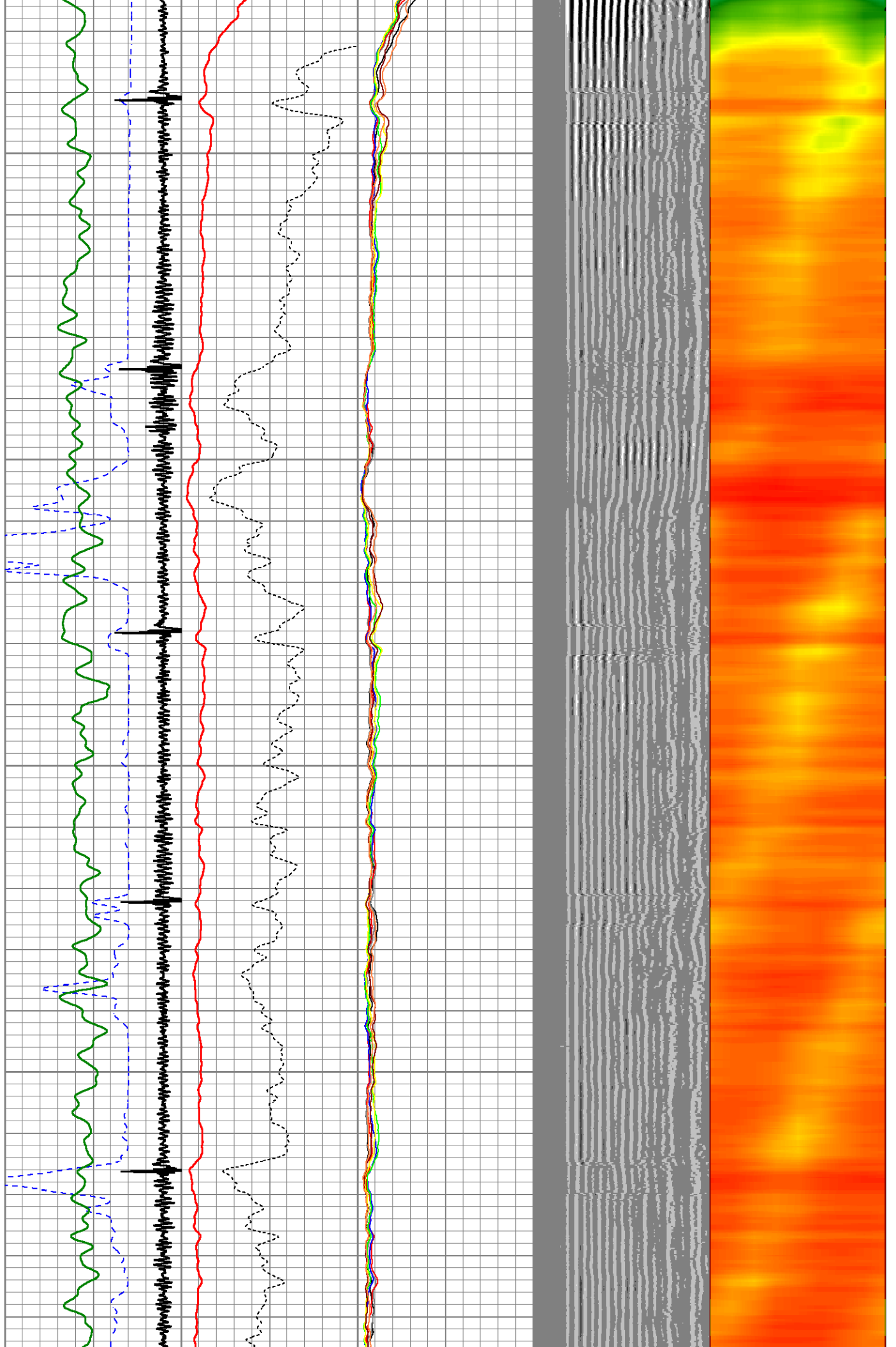


3050

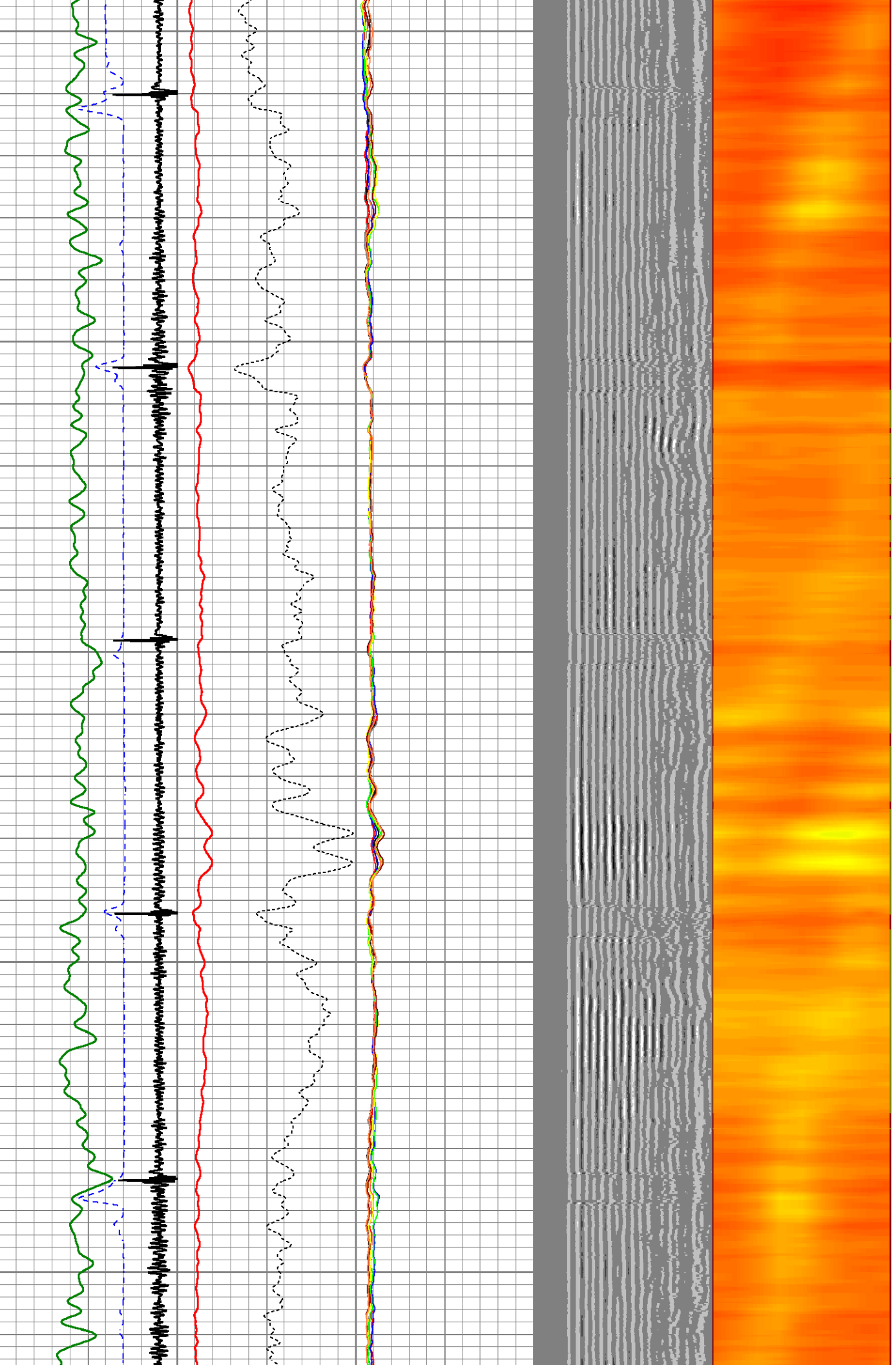
3100

3150

3200



3250
3300
3350
3400
3450

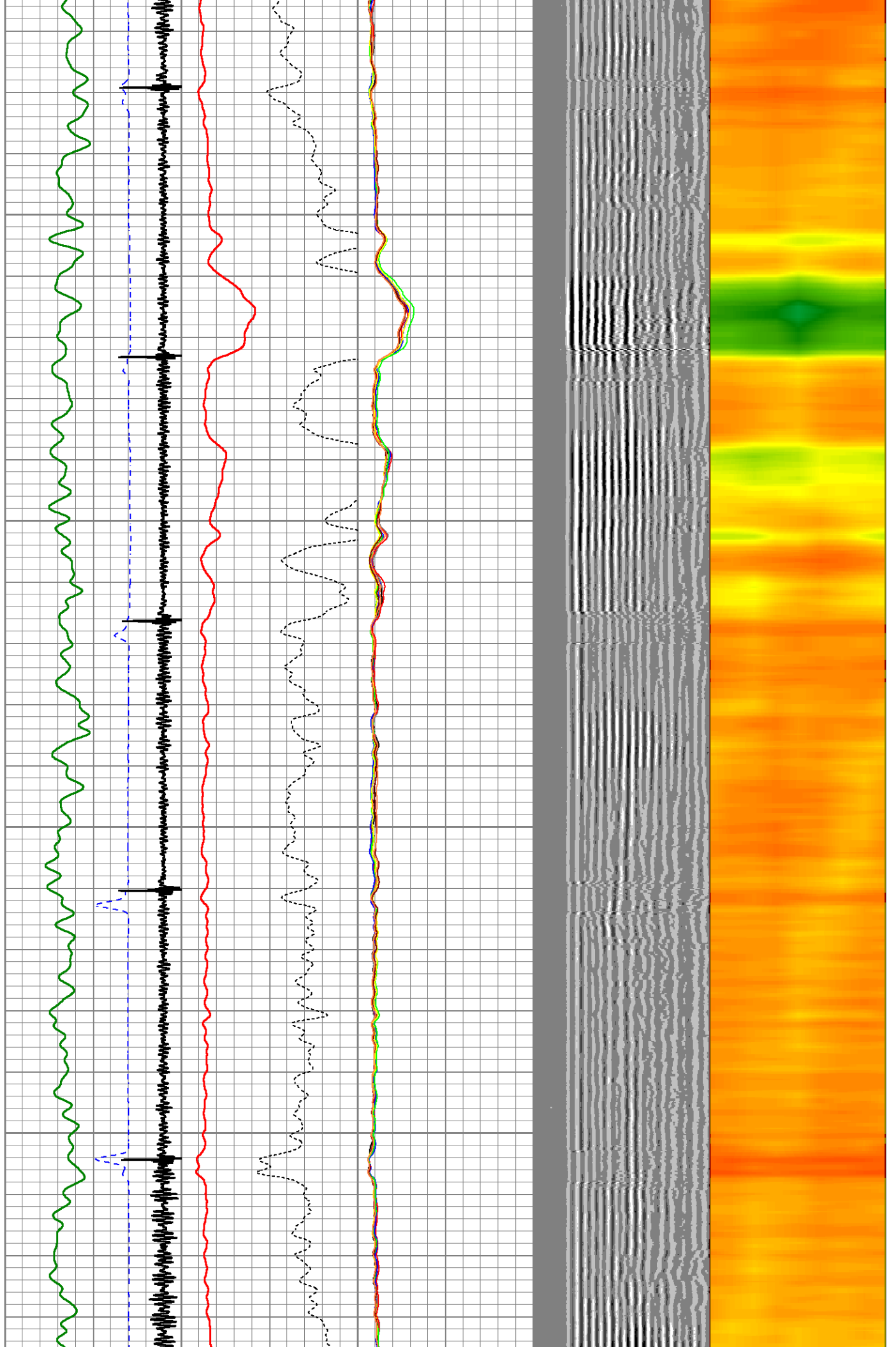


3500

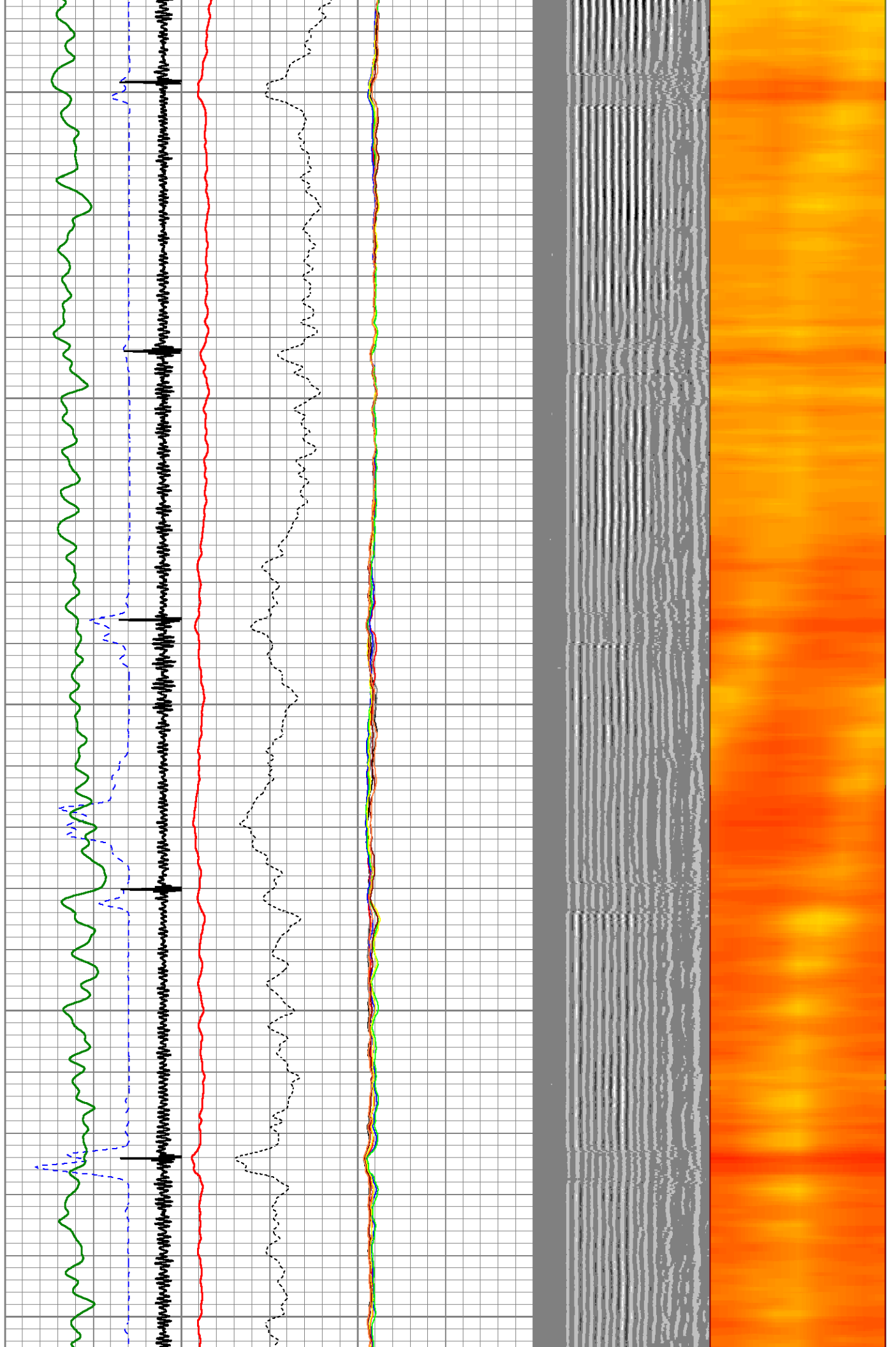
3550

3600

3650



3700
3750
3800
3850
3900

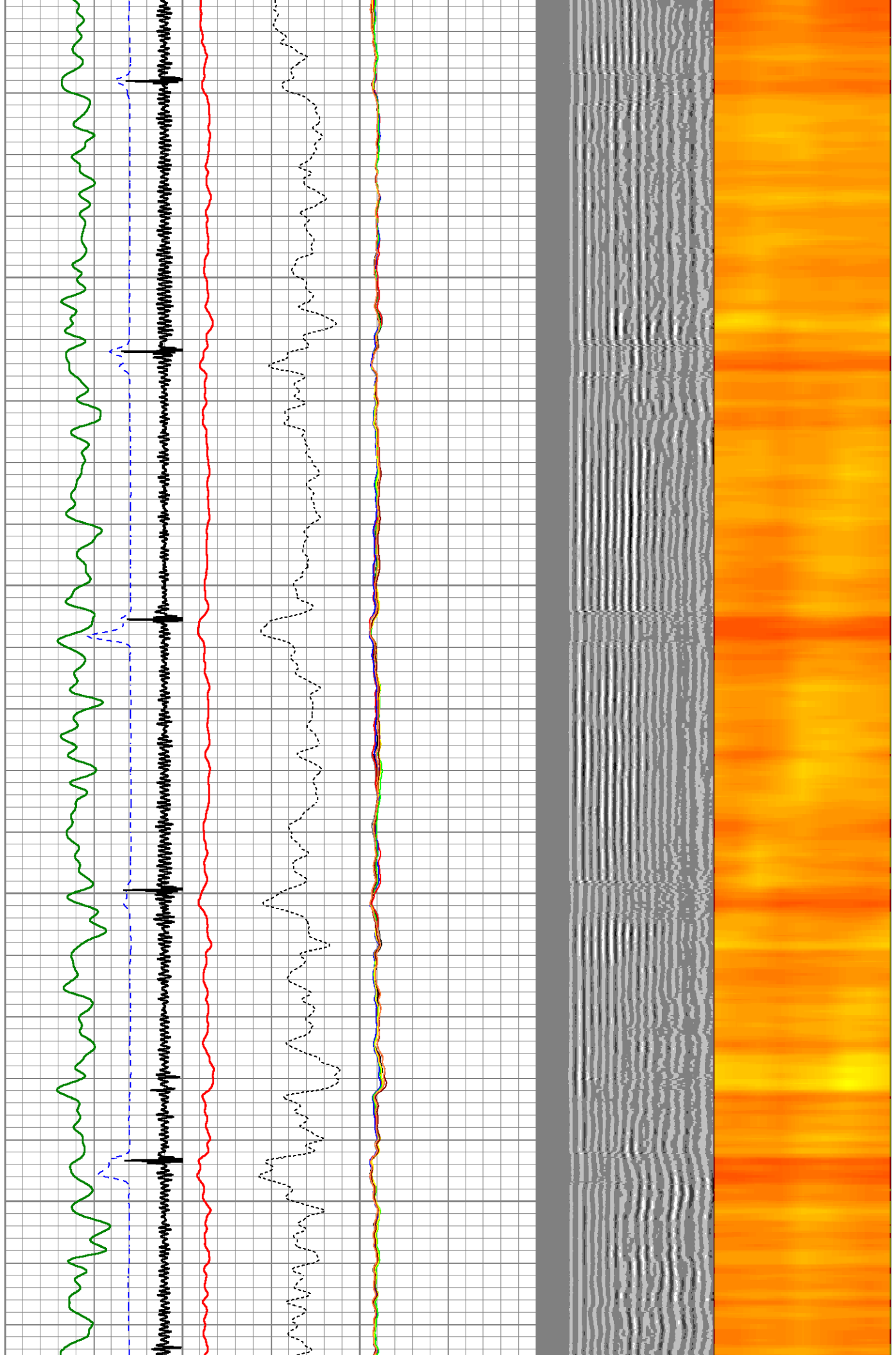


3950

4000

4050

4100

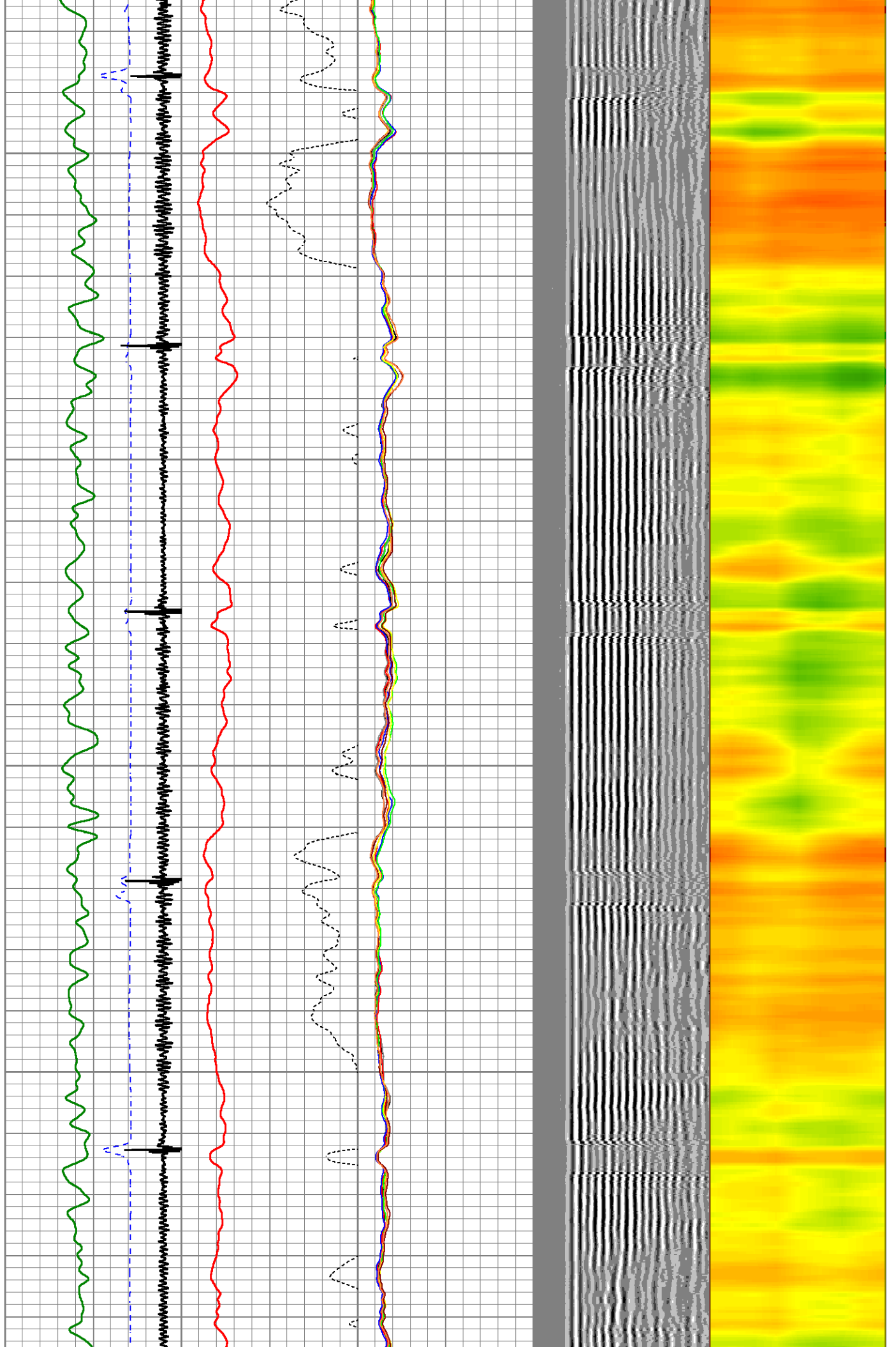


4150

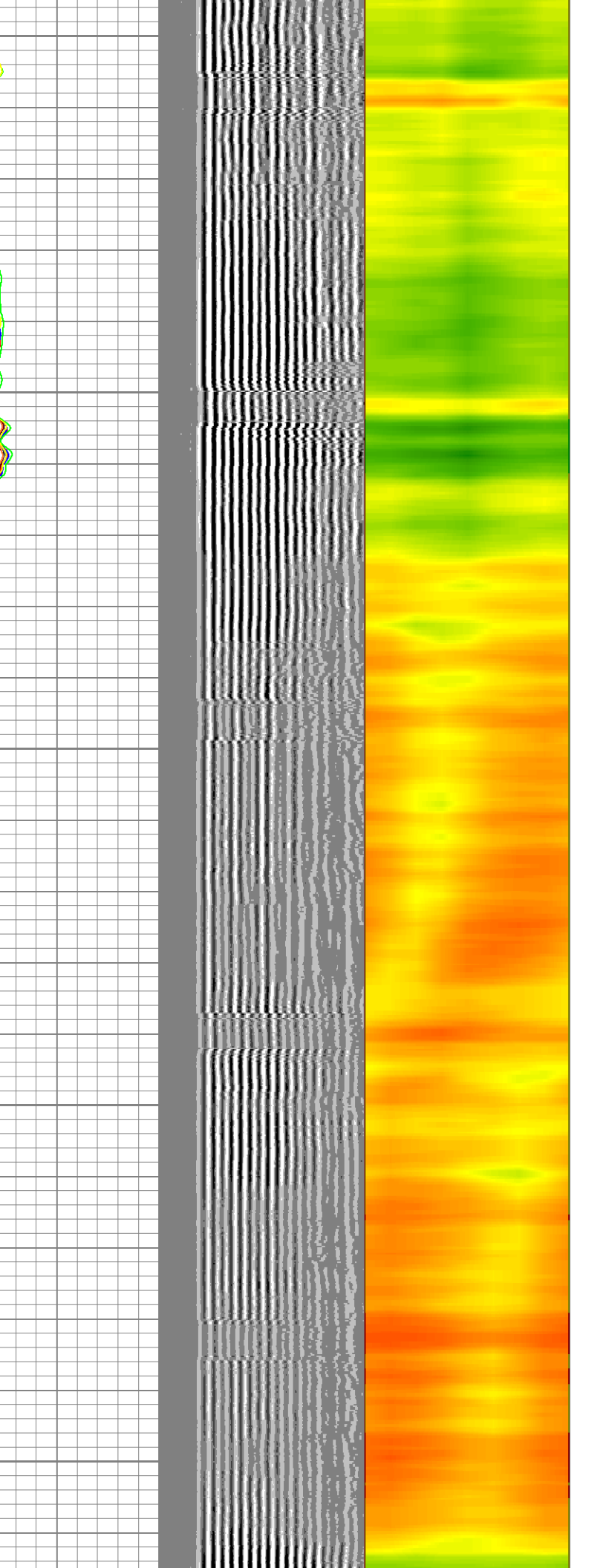
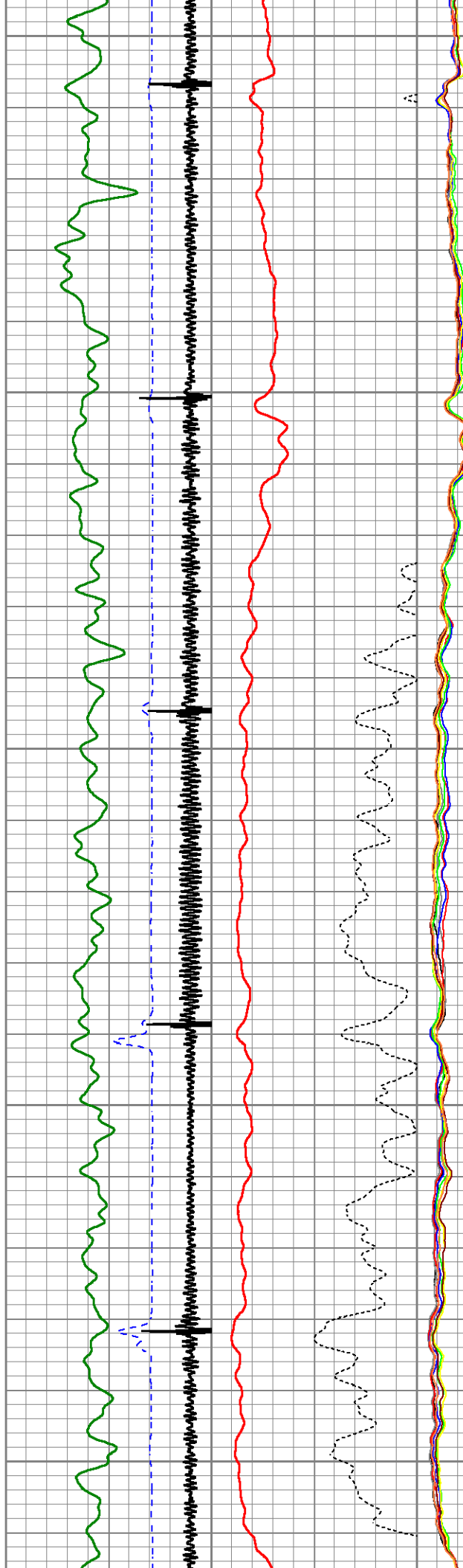
4200

4250

4300



4350
4400
4450
4500
4550

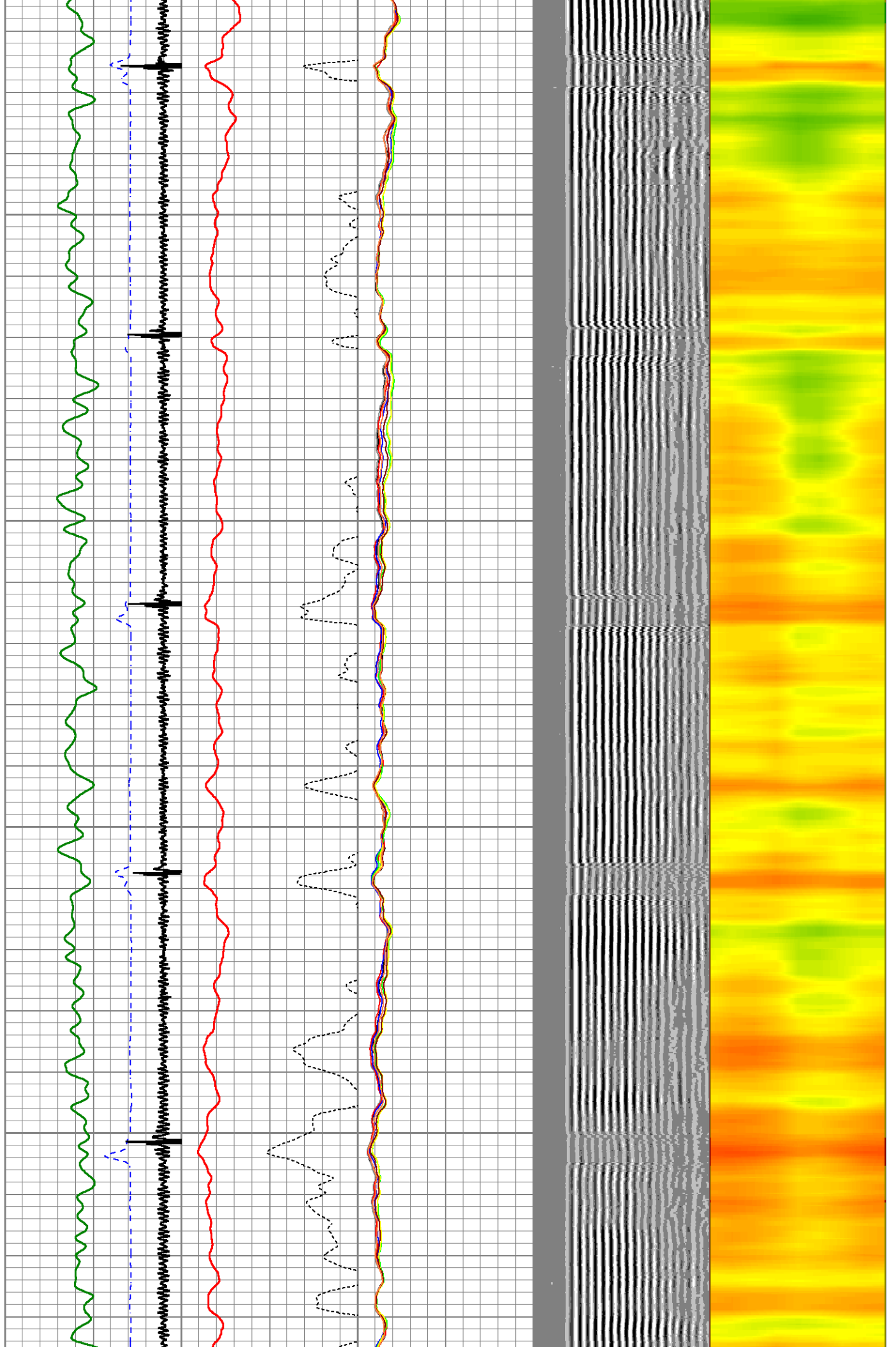


4600

4650

4700

4750



4800

4850

4900

4950

LSPD

GR

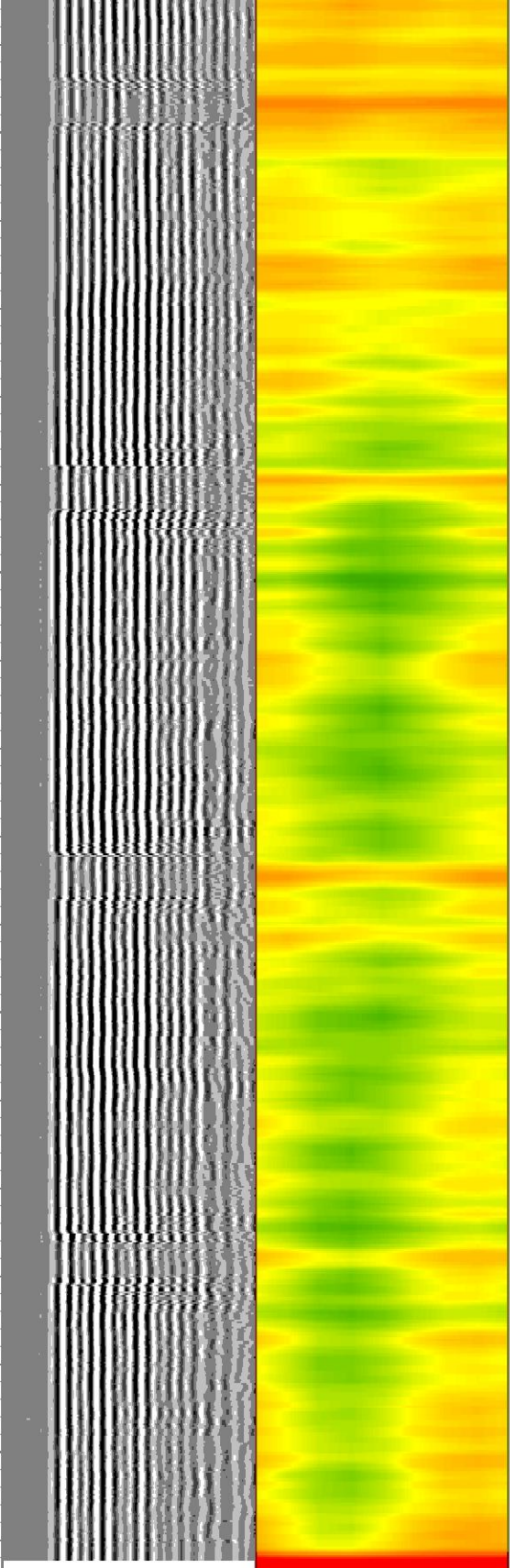
TT3FT

CCL

AMP3FT

- AMPS1
- AMPS2
- AMPS3
- AMPS4
- AMPS5
- AMPS6
- AMPS7
- AMPS8

LSPD	650	TT (usec)	150	0	AMP (mV)	100	0	AMPS1	150	200	VDL (usec)	1200	1	Cement Map	8
(ft/min)	-9	CCL	1	0	AMPx5 (mV)	20	0	AMPS2	150						
0	-250	GR (GAPI)	150					AMPS3	150						
		150 GR (GAPI)	500					AMPS4	150						
								AMPS5	150						
								AMPS6	150						



0	AMPS7	150
0	AMPS8	150

Calibration Report

Database File 4-antelope--33-19--rcbl.db
Dataset Pathname m
Dataset Creation Wed Aug 13 09:27:21 2025

Gamma Ray Calibration Report

Serial Number: 27GRL10-XXXX
Tool Model: 27GRL10
Performed: Mon Mar 11 13:46:24 2024

Calibrator Value: 1.0 GAPI

Background Reading: 0.0 cps
Calibrator Reading: 1.0 cps

Sensitivity: 0.5000 GAPI/cps

Segmented Cement Bond Log Calibration Report

Serial Number: Greeley Ext Temp
Tool Model: 27SBT10

Calibration Casing Diameter: 4.500 in
Calibration Depth: 109.142 ft

Master Calibration, performed Wed Aug 13 09:09:13 2025:

	Raw (v)		Calibrated (mv)		Results	
	Zero	Cal	Zero	Cal	Gain	Offset
3'	0.018	0.940	0.250	81.196	87.835	-1.328
CAL	1.026	1.021				
5'	0.019	0.519	0.250	81.196	161.916	-2.847
SUM						
S1	0.031	0.965	0.000	81.196	86.937	-2.731
S2	0.015	0.946	0.000	81.196	87.193	-1.320
S3	0.020	0.937	0.000	81.196	88.491	-1.727
S4	0.019	0.908	0.000	81.196	91.258	-1.692
S5	0.019	0.894	0.000	81.196	92.785	-1.768
S6	0.016	0.897	0.000	81.196	92.114	-1.464
S7	0.013	0.906	0.000	81.196	90.979	-1.221
S8	0.015	0.947	0.000	81.196	87.113	-1.322

Internal Reference Calibration, performed Thu Mar 10 14:36:00 2022:

	Raw (v)		Calibrated (v)		Results	
	Zero	Cal	Zero	Cal	Gain	Offset
CAL	0.000	0.000	1.026	1.021	1.000	0.000

Air Zero Calibration, performed Wed Aug 13 09:01:45 2025:

	Raw (v)		Calibrated (v)		Results	
	Zero		Zero			Offset
3'	0.000		0.000			0.000
5'	0.000		0.000			0.000

5	0.000	0.000	0.000
SUM			
S1	0.000	0.000	0.000
S2	0.000	0.000	0.000
S3	0.000	0.000	0.000
S4	0.000	0.000	0.000
S5	0.000	0.000	0.000
S6	0.000	0.000	0.000
S7	0.000	0.000	0.000
S8	0.000	0.000	0.000



Company	CIVITAS		
Well	ANTELOPE 33-19		
Field	WATTENBURG		
County	WELD		
State	CO	Country	USA