

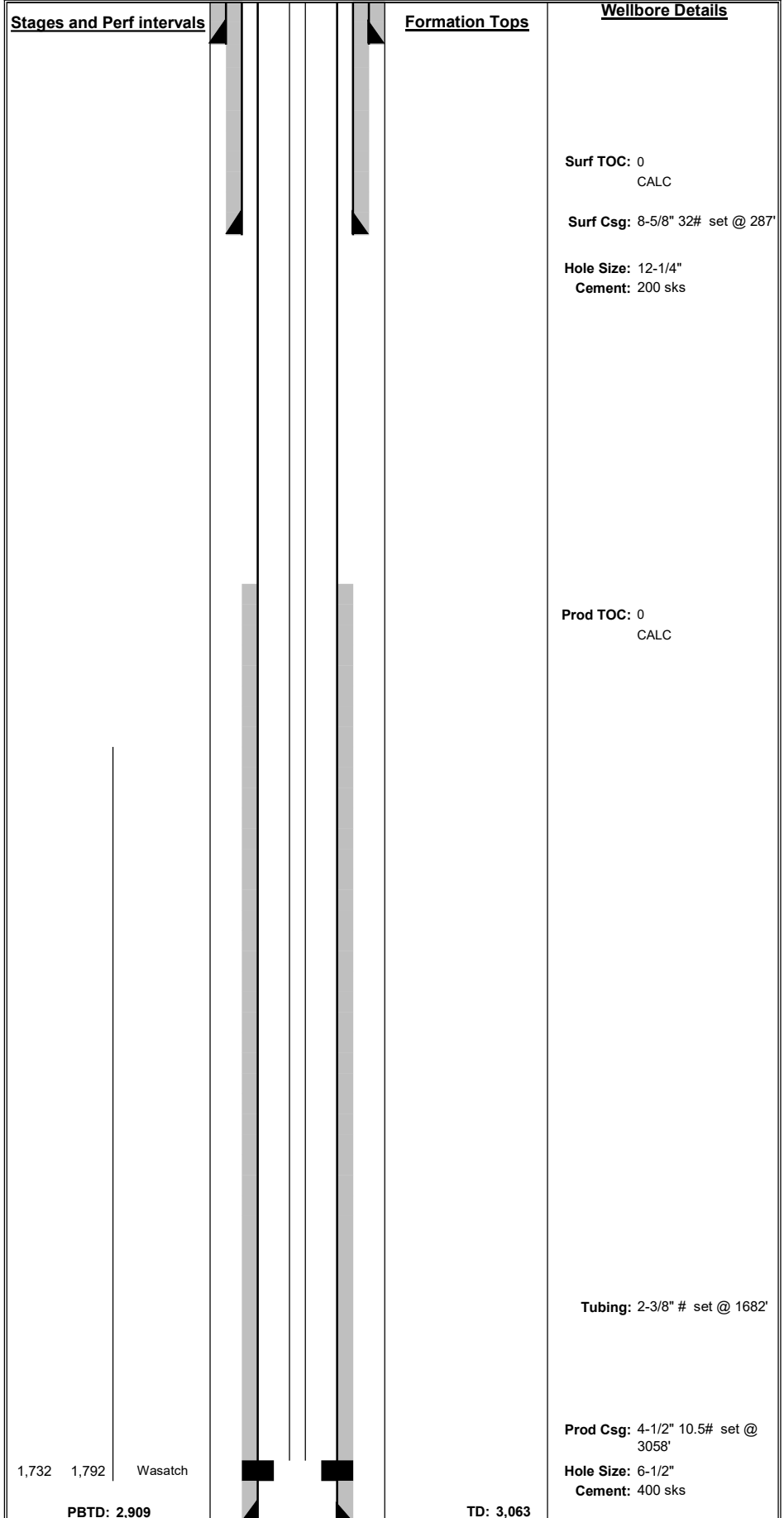
W 34-2 Wellbore Diagram

Last Updated: 12/1/2025



Well	County		API	
W 34-2	Garfield		05-045-06529	
Location	Spud Date	PBTD	TD	Surf TOC
NWSE 2 7S95W	4/18/1987	2,909	3,063	0
Mineral/Surface	Lease #	Top Perf	Bot Perf	Prod TOC
FED	12709	1,732	1,792	0

Wellbore details				
CASING DETAIL	Depth	Size	Weight	Grade
	Depth	Size	Weight	Grade
Surface Csg	287	8 5/8	32.0	
Cement	200 sks			
Hole size	12 1/4	Notes:		
	Depth	Size	Weight	Grade
Prod Csg	3,058	4 1/2	10.5	
Cement	400 sks			
Hole size	6 1/2	Notes:		
KB			10	
TUBING DETAIL				
	1,682	2 3/8		
Current EOT	-83%	Notes:		



1,732 1,792 Wasatch

PBTD: 2,909

TD: 3,063

Surf TOC: 0
CALC

Surf Csg: 8-5/8" 32# set @ 287'

Hole Size: 12-1/4"
Cement: 200 sks

Prod TOC: 0
CALC

Tubing: 2-3/8" # set @ 1682'

Prod Csg: 4-1/2" 10.5# set @ 3058'

Hole Size: 6-1/2"
Cement: 400 sks