

# **Brown 22-5**

SENW Sec. 5-T1N-R68W

API #: 123-21910

Facility ID: 485466

Remediation Project #: 41119

Wellhead and Flowline Decommissioning Package

August and September 2025

Prepared by Tasman, Inc.



On behalf of Crestone Peak Resources Operating, LLC



# **FIELD NOTES AND PHOTO LOG**



# Civitas Decommissioning Form

<b>SITE NAME:</b> Brown 22-5								<b>DATE:</b> 8/26/2025 - 9/18/2025		<b>REM. PROJECT #:</b> 41119		<b>WEATHER:</b> Partly cloudy, 70 F	
<b>SITE DIRECTIONS:</b> Hwy 3 & Highview Dr, S 0.1 Mi, E 0.5 Mi, N 0.1 Mi, W 0.1 Mi INTO								<b>CLIENT:</b> Crestone Peak Resources Operating, LLC					
<b>LEGALS AND LAT/LONG:</b> 40.082021, -105.029653								<b>TASMAN PERSONNEL:</b> Gabrielle Mather, Torren Clemens					
<b>SOIL TYPES:</b> SM - Silty Sand & SC - clayey sand								<b>SURFACE GRADIENT:</b> West					
<b>SURROUNDING LAND USE:</b> Other								<b>CROP:</b> NA					
SOIL SAMPLING								FACILITY INFRASTRUCTURE					
Date/Time	Soil Sample ID	PID (ppm)	Visual	Olfactory	Photo? (Y/N)	USCS	Lab (Y/N)	EQUIPMENT		Quantity			
								Above Ground Storage Tank (AST)					
8/26/2025 13:20	WH-B01@6'	0.3	No Staining	No Odor	Y	SM	Y	Produced Water Vessel (PWV)					
8/26/2025 13:22	WH-N01@5'	1.8	No Staining	No Odor	Y	SM	N	Separator (SEP)					
8/26/2025 13:24	WH-S01@5'	2.4	No Staining	No Odor	Y	SM	N	Emission Control Device (ECD)					
8/26/2025 13:26	WH-E01@5'	2.5	No Staining	No Odor	Y	SM	N	Dump Line (DL)					
8/26/2025 13:28	WH-W01@5'	2.5	No Staining	No Odor	Y	SM	N	Wellhead (WH)		1			
8/26/2025 13:30	FL-B01@3'	0.2	No Staining	No Odor	Y	SM	Y	Flowline (FL)		1			
8/26/2025 13:32	SP-CS01	0.1	No Staining	No Odor	Y	SM	Y	FL Method of Closure		Partial			
9/18/2025 09:00	FL-B02@4'	0.0	No Staining	No Odor	Y	SM	N	FL Footage Removed		507			
9/18/2025 09:05	FL-B03@4'	0.0	No Staining	No Odor	Y	SM	N	Footaged Abandoned in Place		1756			
9/18/2025 09:10	FL-B04@4'	0.0	No Staining	No Odor	Y	SM	N	Other:					
9/18/2025 09:15	FL-B05@4'	0.0	No Staining	No Odor	Y	SM	N	Soil Loads Removed					
9/18/2025 09:20	FL-B06@4'	0.0	No Staining	No Odor	Y	SM	N	IMPACTED SOIL IDENTIFIED? No					
9/18/2025 09:25	SP-CS02	0.0	No Staining	No Odor	N	SC	N	ESTIMATED VOLUME OF IMPACTS: Ongoing assessment activities					
9/18/2025 10:00	BG01@4'	0.0	No Staining	No Odor	Y	SM	Y	Date		Number	CY		
9/18/2025 10:05	BG01@6'	0.0	No Staining	No Odor	Y	SM	Y						
9/18/2025 10:10	BG02@4'	0.0	No Staining	No Odor	Y	SM	Y						
9/18/2025 10:15	BG02@6'	0.0	No Staining	No Odor	Y	SM	Y						
9/18/2025 12:00	FL-B07@4'	0.2	No Staining	No Odor	Y	SC	N						
9/18/2025 12:05	FL-B08@4'	0.0	No Staining	No Odor	Y	SC	N	Total Removed		0	0		
9/18/2025 12:10	FL-B09@4'	0.0	No Staining	No Odor	Y	SC	N	Disposal Facility:					
9/18/2025 12:15	FL-B10@4'	0.0	No Staining	No Odor	Y	SC	N	Groundwater Recovery					
9/18/2025 12:20	SP-CS03	0.0	No Staining	No Odor	N	SC	N	DATE GW ENCOUNTERED: N/A		DEPTH:			
								GROUNDWATER IN CONTACT WITH IMPACTED SOIL?					
								LNAPL OR SHEEN OBSERVED ON GW?					
GROUNDWATER SAMPLING								Date		BBLs			
Date/Time	Groundwater Sample ID	Depth Collected	Turbid?	Sheen?	Odor?	Photo?							
								Total Removed		0			
								Disposal Facility:					



# Photographic Log

<p> <span style="margin-right: 150px;">☉ 359°N (T) ● 40°4'55"N, 105°1'47"W ±39ft ▲ 5040ft</span> <span>☉ 182°S (T) ● 40°4'56"N, 105°2'7"W ±6ft ▲ 5018ft</span> </p>			
<p style="text-align: right; font-size: small;">26 Aug 2025, 13:36:49</p>	<p style="text-align: right; font-size: small;">26 Aug 2025, 14:45:16</p>		
Equipment ID:	Equipment Type:	Equipment ID:	Equipment Type:
Material:	Volume:	Contents:	Material:
Notes/Conditions: Surrounding land use facing North		Notes/Conditions: Surrounding land use facing South	



# Photographic Log

<p>N 0 30 NE 60 <b>E</b> 90 SE 120 150 S 180</p> <p>☉ 93°E (T) ● 40°4'56"N, 105°2'7"W ±6ft ▲ 5018ft</p>			<p>S 180 210 SW 240 <b>W</b> 270 NW 300 330 N 0</p> <p>☉ 270°W (T) ● 40°4'55"N, 105°1'46"W ±16ft ▲ 5030ft</p>				
<p>26 Aug 2025, 14:45:36</p>			<p>26 Aug 2025, 13:36:35</p>				
<b>Equipment ID:</b>		<b>Equipment Type:</b>		<b>Equipment ID:</b>		<b>Equipment Type:</b>	
<b>Material:</b>		<b>Volume:</b>		<b>Material:</b>		<b>Volume:</b>	
<b>Contents:</b>				<b>Contents:</b>			
<b>Notes/Conditions:</b> Surrounding land use facing East				<b>Notes/Conditions:</b> Surrounding land use facing West			



# Photographic Log

<p>SE 120 150 180 210 240 270 W</p> <p>200°S (T) ● 40°4'55"N, 105°1'46"W ±16ft ▲ 5031ft</p>			<p>SE 120 150 180 210 240 270 300 W</p> <p>208°SW (T) ● 40°4'59"N, 105°1'47"W ±16ft ▲ 5028ft</p>		
<p>26 Aug 2025, 13:35:45</p>			<p>18 Sep 2025, 09:31:27</p>		
Equipment ID:		Equipment Type:	Equipment ID:		Equipment Type:
Material:	Volume:	Contents:	Material:	Volume:	Contents:
Notes/Conditions: Soil sampling and screening locations			Notes/Conditions: Soil Sample Location		



# Photographic Log

190°S (T) ● 40°4'59"N, 105°1'47"W ±16ft ▲ 5026ft			199°S (T) ● 40°5'0"N, 105°1'47"W ±16ft ▲ 5024ft		
<p style="text-align: center;">X FL-B03@4'</p> <p style="text-align: right; font-size: small;">18 Sep 2025 09:37:10</p>			<p style="text-align: center;">X FL-B04@4'</p> <p style="text-align: right; font-size: small;">18 Sep 2025 09:41:33</p>		
<b>Equipment ID:</b>		<b>Equipment Type:</b>	<b>Equipment ID:</b>		<b>Equipment Type:</b>
<b>Material:</b>	<b>Volume:</b>	<b>Contents:</b>	<b>Material:</b>	<b>Volume:</b>	<b>Contents:</b>
<b>Notes/Conditions:</b> Soil Screening Location			<b>Notes/Conditions:</b> Soil Screening Location		



# Photographic Log

175°S (T) ● 40°5'1"N, 105°1'47"W ±16ft ▲ 5024ft			306°NW (T) ● 40°5'1"N, 105°1'46"W ±16ft ▲ 5028ft		
<p style="text-align: center;">X FL-B05@4'</p> <p style="text-align: right; font-size: small;">18 Sep 2025 09:42:10</p>			<p style="text-align: center;">X FL-B06@4'</p> <p style="text-align: right; font-size: small;">18 Sep 2025 09:43:51</p>		
<b>Equipment ID:</b>		<b>Equipment Type:</b>	<b>Equipment ID:</b>		<b>Equipment Type:</b>
<b>Material:</b>	<b>Volume:</b>	<b>Contents:</b>	<b>Material:</b>	<b>Volume:</b>	<b>Contents:</b>
<b>Notes/Conditions:</b> Soil Screening Location			<b>Notes/Conditions:</b> Soil Sample Location		



# Photographic Log

<p style="text-align: center;">X FL-B07@4</p> <p style="text-align: right;">18 Sep 2025, 12:17:31</p>			<p style="text-align: center;">X FL-B08@4</p> <p style="text-align: right;">18 Sep 2025, 13:46:52</p>		
<b>Equipment ID:</b>			<b>Equipment Type:</b>		
<b>Material:</b>		<b>Volume:</b>	<b>Contents:</b>		<b>Equipment ID:</b>
<b>Material:</b>		<b>Volume:</b>	<b>Contents:</b>		<b>Equipment Type:</b>
<b>Notes/Conditions:</b> Soil Sample Location			<b>Notes/Conditions:</b> Soil Screening Location		



# Photographic Log

257°W (T) ● 40°5'7"N, 105°2'2"W ±16ft ▲ 5001ft			208°SW (T) ● 40°5'7"N, 105°2'3"W ±16ft ▲ 5003ft		
X <b>FL-B09@4</b> <small>18 Sep 2025 13:49:32</small>			X <b>FL-B10@4</b> <small>18 Sep 2025 13:50:04</small>		
<b>Equipment ID:</b>			<b>Equipment Type:</b>		
<b>Material:</b>	<b>Volume:</b>	<b>Contents:</b>	<b>Material:</b>	<b>Volume:</b>	<b>Contents:</b>
<b>Notes/Conditions:</b> Soil Sample Location			<b>Notes/Conditions:</b> Soil Screening Location		



# Photographic Log

<p>☀ 157°SE (T) ● 40°4'55"N, 105°1'44"W ±16ft ▲ 5030ft</p>			<p>☀ 166°S (T) ● 40°4'55"N, 105°1'44"W ±16ft ▲ 5032ft</p>		
<p>X BG01@4'/6'</p> <p>18 Sep 2025, 10:33:13</p>			<p>X BG02@4'/6'</p> <p>18 Sep 2025, 10:33:27</p>		
<b>Equipment ID:</b>		<b>Equipment Type:</b>	<b>Equipment ID:</b>		<b>Equipment Type:</b>
<b>Material:</b>	<b>Volume:</b>	<b>Contents:</b>	<b>Material:</b>	<b>Volume:</b>	<b>Contents:</b>
<b>Notes/Conditions:</b> Background Soil Sample Location			<b>Notes/Conditions:</b> Background Soil Sample Location		

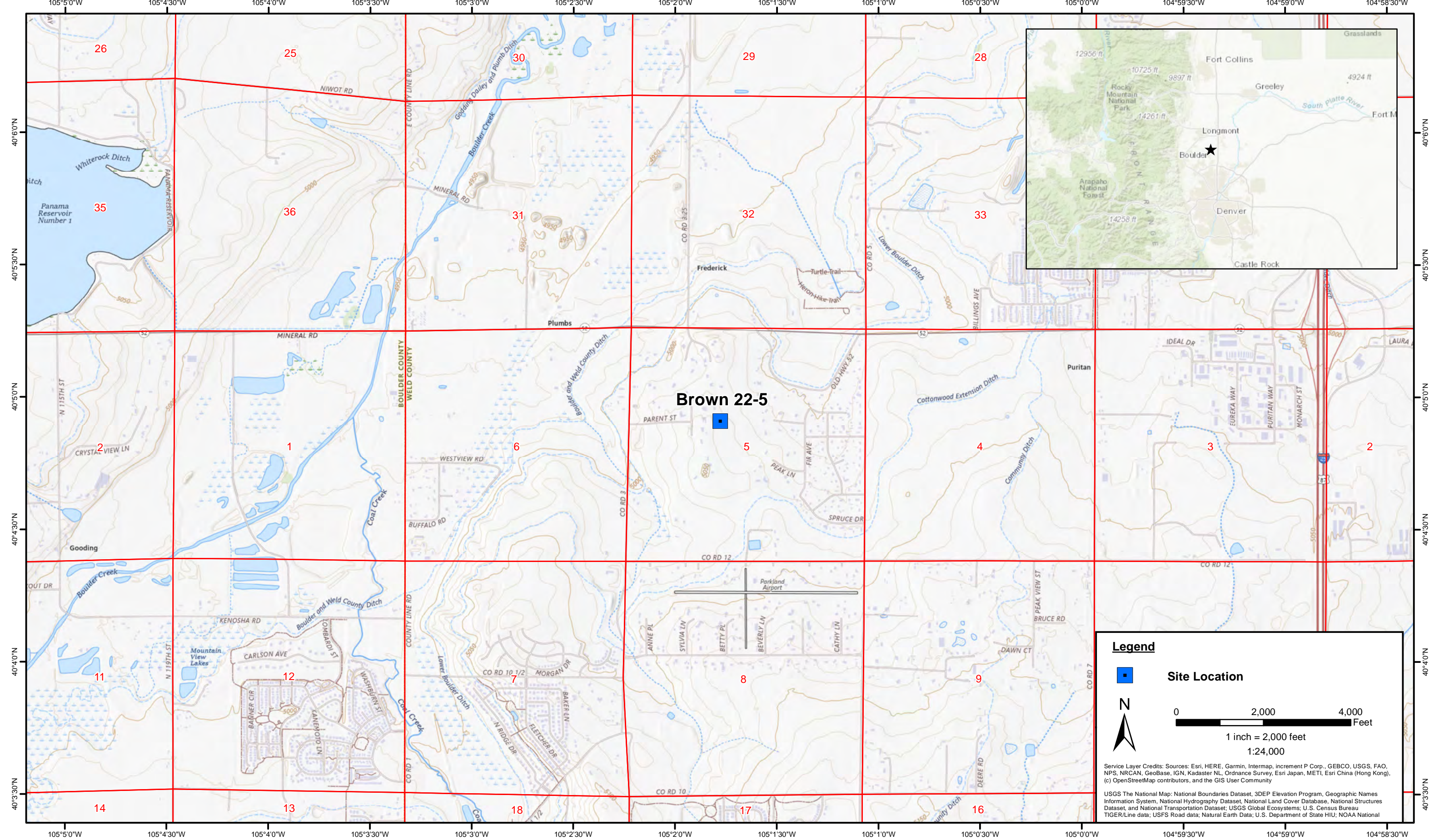


# Photographic Log



<b>Equipment ID:</b>		<b>Equipment Type:</b>		<b>Equipment ID:</b>		<b>Equipment Type:</b>	
<b>Material:</b>	<b>Volume:</b>	<b>Contents:</b>		<b>Material:</b>	<b>Volume:</b>	<b>Contents:</b>	
<b>Notes/Conditions:</b> Background Soil Sample Lithology				<b>Notes/Conditions:</b>			

# FIGURES



DATE:	September 2025
DESIGNED BY:	S. Vogt
DRAWN BY:	J. Woffinden

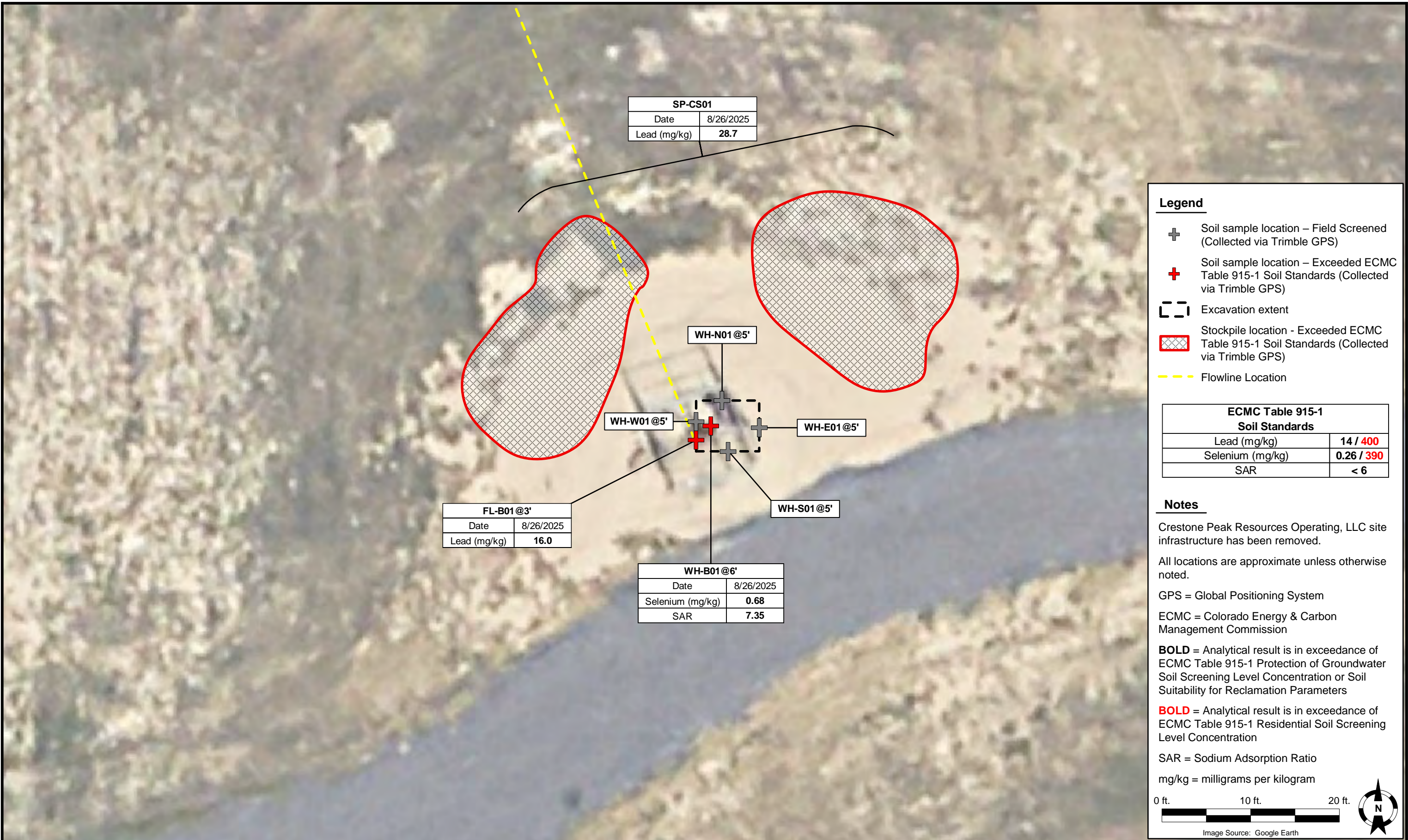


**Tasman, Inc.**  
4725 Independence St.  
Wheat Ridge, CO 80033

**Crestone Peak Resources Operating, LLC**  
**Brown 22-5**  
 SENW Sec. 5-T1N-R68W  
 Weld County, Colorado

Site Location Map

**Figure**  
1



DATE: November 03, 2025

DESIGNED BY: S. Vogt

DRAWN BY: M. Sherwin



**Tasman, Inc.**  
 4725 Independence St.  
 Wheat Ridge, CO 80033

**Crestone Peak Resources Operating, LLC**  
 Brown 22-5  
 SENW Sec. 5-T1N-R68W  
 Weld County, Colorado

Wellhead Soil Sample  
 Location Map  
 (08/26/2025)

Figure  
 2



**Legend**

- Soil sample location – Field Screened (Collected via Trimble GPS)
- Soil sample location – Exceeded ECMC Table 915-1 Soil Standards (Collected via Trimble GPS)
- Excavation extent
- Stockpile location – Field Screened (Collected via Trimble GPS)
- Flowline Location - Removed
- Flowline Location - Abandoned in Place

**Notes**

Crestone Peak Resources Operating, LLC Site infrastructure has been removed.

All locations are approximate unless otherwise noted.

GPS = Global Positioning System

ECMC = Colorado Energy & Carbon Management Commission

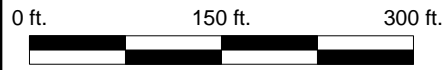


Image Source: Google Earth

DATE:	November 03, 2025
DESIGNED BY:	S. Vogt
DRAWN BY:	M. Sherwin



**Tasman, Inc.**  
 4725 Independence St.  
 Wheat Ridge, CO 80033

**Crestone Peak Resources Operating LLC**  
 Brown 22-5  
 SENW Sec. 9-T2N-R67W  
 Weld County, Colorado

Flowline Soil Sample  
 Location Map  
 (08/26/2025 & 09/18/2025)

Figure  
 3



DATE:	November 03, 2025
DESIGNED BY:	S. Vogt
DRAWN BY:	M. Sherwin



**Tasman, Inc.**  
 4725 Independence St.  
 Wheat Ridge, CO 80033

**Crestone Peak Resources Operating LLC**  
 Brown 22-5  
 SENW Sec. 5-T1N-R68W  
 Weld County, Colorado

Background Soil Sample  
 Location Map  
 (09/18/2025)

Figure  
 4

# TABLES

**TABLE 1**  
**BROWN 22-5**  
**SOIL SAMPLE LOCATIONS**  
**CRESTONE PEAK RESOURCES OPERATING, LLC**



Soil Sample Location	Depth	Date	PID Reading (ppm)	Latitude	Longitude	GPS PDOP Value	Lab (Y/N)
WH-B01@6'	6'	08/26/2025	0.3	40.082018	-105.029662	0.9	Y
WH-N01@5'	5'	08/26/2025	1.8	40.082026	-105.029657	1.0	N
WH-S01@5'	5'	08/26/2025	2.4	40.082010	-105.029654	1.0	N
WH-E01@5'	5'	08/26/2025	2.5	40.082018	-105.029641	1.0	N
WH-W01@5'	5'	08/26/2025	2.5	40.082017	-105.029667	1.0	N
FL-B01@3'	3'	08/26/2025	0.2	40.082016	-105.029667	1.0	Y
SP-CS01	-	08/26/2025	0.1	40.082041	-105.029632	-	Y
FL-B02@4'	4'	09/18/2025	0.0	40.083057	-105.029757	1.3	N
FL-B03@4'	4'	09/18/2025	0.0	40.083177	-105.029748	1.1	N
FL-B04@4'	4'	09/18/2025	0.0	40.083459	-105.029748	1.1	N
FL-B05@4'	4'	09/18/2025	0.0	40.083725	-105.029742	1.0	N
FL-B06@4'	4'	09/18/2025	0.0	40.083867	-105.029745	1.2	N
SP-CS02	-	09/18/2025	0.0	40.083467	-105.029753	-	N
FL-B07@4'	4'	09/18/2025	0.2	40.085405	-105.033267	1.0	N
FL-B08@4'	4'	09/18/2025	0.0	40.085433	-105.033583	1.0	N
FL-B09@4'	4'	09/18/2025	0.0	40.085442	-105.033941	0.9	N
FL-B10@4'	4'	09/18/2025	0.0	40.085309	-105.034227	0.8	N
SP-CS03	-	09/18/2025	0.0	40.085409	-105.033629	-	N
FL-B05@5'**	5'	09/18/2025	0.5	40.085262	-104.034519	0.9	Y
<b>BACKGROUND</b>							
BG01@4'	4'	09/18/2025	0.0	40.082152	-105.029134	1.0	Y
BG02@4'	4'	09/18/2025	0.0	40.082067	-105.029126	0.9	Y
BG01@6'	6'	09/18/2025	0.0	40.082152	-105.029134	1.0	Y
BG02@6'	6'	09/18/2025	0.0	40.082067	-105.029126	0.9	Y

**Notes:**

PID = Photoionization Detector

ppm = parts per million

GPS = Global Positioning System

PDOP = Position Dilution of Precision

- = Not applicable

\*\* = Sample collected as part of Brown C Unit 2 site assessment (REM #: 40779)

**TABLE 2**  
**BROWN 22-5**  
**SOIL ANALYTICAL DATA - VOCs**  
**CRESTONE PEAK RESOURCES OPERATING, LLC**



Soil Sample Location	Depth	Date	Benzene (mg/kg)	Toluene (mg/kg)	Ethylbenzene (mg/kg)	Total Xylenes (mg/kg)	Naphthalene (mg/kg)	TVPH-GRO (mg/kg)	TEPH-DRO (mg/kg)	TEPH-ORO (mg/kg)	1,2,4-TMB (mg/kg)	1,3,5-TMB (mg/kg)
<b>ECMC Organic Compounds in Soils - GSSL <sup>(1)</sup></b>			<b>0.0026</b>	<b>0.69</b>	<b>0.78</b>	<b>9.9</b>	<b>0.0038</b>	<b>500</b>			<b>0.0081</b>	<b>0.0087</b>
<b>ECMC Organic Compounds in Soils - RSSL <sup>(2)</sup></b>			<b>1.2</b>	<b>490</b>	<b>5.8</b>	<b>58</b>	<b>2</b>	<b>500</b>			<b>30</b>	<b>27</b>
WH-B01@6'	6'	08/26/2025	<0.0011	<0.0023	<0.0023	<0.0023	<0.0023	<0.23	<4.5	10.2	<0.0023	<0.0023
FL-B01@3'	3'	08/26/2025	<0.0011	<0.0022	<0.0022	<0.0022	<0.0022	<0.22	13.0	36.1	<0.0022	<0.0022
SP-CS01	-	08/26/2025	<0.0010	<0.0021	<0.0021	<0.0021	<0.0023	<0.21	4.88	16.2	<0.0021	<0.0021

**Notes:**

VOCs = Volatile Organic Compounds

(1) Standards for soil are taken from ECMC Table 915-1: Organic Compounds in Soils - Protection of Groundwater Soil Screening Level Concentrations (Effective January 15, 2021)

(2) Standards for soil are taken from ECMC Table 915-1: Organic Compounds in Soils - Residential Soil Screening Level Concentrations (Effective January 15, 2021)

ECMC = Colorado Energy & Carbon Management Commission

GSSL = Protection of Groundwater Soil Screening Level

RSSL = Residential Soil Screening Level

(<) = Analytical result is less than the indicated laboratory detection limit

mg/kg = milligrams per kilogram

TVPH - GRO = Total Volatile Petroleum Hydrocarbons - Gasoline Range Organics

TEPH - DRO = Total Extractable Petroleum Hydrocarbons - Diesel Range Organics

TEPH - ORO = Total Extractable Petroleum Hydrocarbons - Oil Range Organics

1,2,4 - TMB = 1,2,4 - Trimethylbenzene

1,3,5 - TMB = 1,3,5 - Trimethylbenzene

**BOLD** = Analytical result is in exceedance of ECMC Table 915-1: Organic Compounds in Soils - Protection of Groundwater Soil Screening Level Concentrations

**BOLD** = Analytical result is in exceedance of ECMC Table 915-1: Organic Compounds in Soils - Residential Soil Screening Level Concentrations

- = Not applicable



**TABLE 3**  
**BROWN 22-5**  
**SOIL ANALYTICAL DATA - PAHs**  
**CRESTONE PEAK RESOURCES OPERATING, LLC**

Soil Sample Location	Depth	Date	Acenaphthene (mg/kg)	Anthracene (mg/kg)	Benzo(a)A (mg/kg)	Benzo(b)F (mg/kg)	Benzo(k)F (mg/kg)	Benzo(a)P (mg/kg)	Chrysene (mg/kg)	D (a,h) A (mg/kg)	Fluoranthene (mg/kg)	Fluorene (mg/kg)	1,2,3-CD (mg/kg)	1-M (mg/kg)	2-M (mg/kg)	Pyrene (mg/kg)
<b>ECMC Organic Compounds in Soils - GSSL <sup>(1)</sup></b>			<b>0.55</b>	<b>5.8</b>	<b>0.011</b>	<b>0.3</b>	<b>2.9</b>	<b>0.24</b>	<b>9</b>	<b>0.96</b>	<b>8.9</b>	<b>0.54</b>	<b>0.98</b>	<b>0.006</b>	<b>0.019</b>	<b>1.3</b>
<b>ECMC Organic Compounds in Soils - RSSL <sup>(2)</sup></b>			<b>360</b>	<b>1,800</b>	<b>1.1</b>	<b>1.1</b>	<b>11</b>	<b>0.11</b>	<b>110</b>	<b>0.11</b>	<b>240</b>	<b>240</b>	<b>1.1</b>	<b>18</b>	<b>24</b>	<b>180</b>
WH-B01@6'	6'	08/26/2025	<0.0047	<0.0047	<0.0059	<0.0047	<0.0047	<0.0047	<0.0047	<0.0047	<0.0047	<0.0047	<0.0047	<0.0047	<0.0047	<0.0047
FL-B01@3'	3'	08/26/2025	<0.0044	<0.0044	<0.0054	<0.0044	<0.0044	<0.0044	<0.0044	<0.0044	<0.0044	<0.0044	<0.0044	<0.0044	<0.0044	<0.0044
SP-CS01	-	08/26/2025	<0.0045	<0.0045	<0.0057	<0.0045	<0.0045	<0.0045	<0.0045	<0.0045	<0.0045	<0.0045	<0.0045	<0.0045	<0.0045	<0.0045

**Notes:**

PAHs = Polycyclic Aromatic Hydrocarbons

(1) Standards for soil are taken from ECMC Table 915-1: Organic Compounds in Soils - Protection of Groundwater Soil Screening Level Concentrations (Effective January 15, 2021)

(2) Standards for soil are taken from ECMC Table 915-1: Organic Compounds in Soils - Residential Soil Screening Level Concentrations (Effective January 15, 2021)

ECMC = Colorado Energy & Carbon Management Commission

GSSL = Protection of Groundwater Soil Screening Level

RSSL = Residential Soil Screening Level

(<) = Analytical result is less than the indicated laboratory detection limit

mg/kg = milligrams per kilogram

Benzo(a)A = Benzo(a)Anthracene

Benzo(b)F = Benzo(b)Fluoranthene

Benzo(k)F = Benzo(k)Fluoranthene

Benzo(a)P = Benzo(a)Pyrene

D (a,h) A = Dibenz(a,h)Anthracene

1,2,3-CD = Indeno(1,2,3-cd)Pyrene

1-M = 1-Methylnaphthalene

2-M = 2-Methylnaphthalene

**BOLD** = Analytical result is in exceedance of ECMC Table 915-1: Organic Compounds in Soils - Protection of Groundwater Soil Screening Level Concentrations

**BOLD** = Analytical result is in exceedance of ECMC Table 915-1: Organic Compounds in Soils - Residential Soil Screening Level Concentrations

- = Not applicable



**TABLE 4**  
**BROWN 22-5**  
**SOIL ANALYTICAL DATA - METALS**  
**CRESTONE PEAK RESOURCES OPERATING, LLC**

Soil Sample Location	Depth	Date	Arsenic (mg/kg)	Barium (mg/kg)	Cadmium (mg/kg)	Chromium (VI) (mg/kg)	Copper (mg/kg)	Lead (mg/kg)	Nickel (mg/kg)	Selenium (mg/kg)	Silver (mg/kg)	Zinc (mg/kg)
ECMC Metals in Soils - GSSL <sup>(1)</sup>			0.29	82	0.38	0.00067	46	14	26	0.26	0.8	370
ECMC Metals in Soils - RSSL <sup>(2)</sup>			0.68	15,000	71	0.3	3,100	400	1,500	390	390	23,000
WH-B01@6'	6'	08/26/2025	2.0*	121*	0.085	<0.46	10	6.8	9.4	0.68	<0.058	22.3
FL-B01@3'	3'	08/26/2025	6.0*	181*	0.37	<0.46	16.1	16.0	15.7	0.25	0.064	53.2
SP-CS01	-	08/26/2025	4.8*	141*	0.27	<0.44	18.3	28.7	15.2	0.28*	0.077	50.9
<b>BACKGROUND</b>												
BG01@4'	4'	09/18/2025	4.5	231	0.22	<0.45	12.9	11.9	13.0	0.23	0.048	42.4
BG02@4'	4'	09/18/2025	4.8	315	0.22	<0.43	13.9	12.3	14.4	0.22	0.054	43.3
BG01@6'	6'	09/18/2025	3.7	208	0.16	<0.44	11.3	11.9	11.6	0.26	<0.038	39.9
BG02@6'	6'	09/18/2025	3.9	251	0.19	<0.43	10.4	9.5	10.8	0.47	<0.036	32.6
<b>Highest Background @ 3'-6' x1.25 (SM &amp; SC)</b>			<b>6.0</b>	<b>394</b>	<b>0.28</b>	-	<b>17.4</b>	<b>15.4</b>	<b>18.0</b>	<b>0.59</b>	<b>0.068</b>	<b>54.1</b>

**Notes:**

(1) Standards for soil are taken from ECMC Table 915-1: Metals in Soils - Protection of Groundwater Soil Screening Level Concentrations (Effective January 15, 2021)

(2) Standards for soil are taken from ECMC Table 915-1: Metals in Soils - Residential Soil Screening Level Concentrations (Effective January 15, 2021)

ECMC = Colorado Energy & Carbon Management Commission

GSSL = Protection of Groundwater Soil Screening Level

RSSL = Residential Soil Screening Level

(<) = Analytical result is less than the indicated laboratory detection limit

Chromium (VI) = Hexavalent Chromium

mg/kg = milligrams per kilogram

SM = Silty Sand

SC = Clayey Sand

**BOLD** = Analytical result is in exceedance of ECMC Table 915-1: Metals in Soils - Protection of Groundwater Soil Screening Level Concentrations

**BOLD** = Analytical result is in exceedance of ECMC Table 915-1: Metals in Soils - Residential Soil Screening Level Concentrations

**Highest background concentration x1.25**

*Italics* = Laboratory detection limit exceeds the ECMC Table 915-1 Standard

\* Result exceeded the ECMC Table 915-1 standard, but was within site-specific 1.25x background multiplier levels

- = Not applicable

**TABLE 5**  
**BROWN 22-5**  
**SOIL ANALYTICAL DATA - SOIL RECLAMATION**  
**CRESTONE PEAK RESOURCES OPERATING, LLC**



Soil Sample Location	Depth	Date	pH	SAR	EC (mmhos/cm)	Boron (mg/L)
<b>ECMC Soil Suitability for Reclamation<sup>(1)</sup></b>			<b>6 - 8.3</b>	<b>&lt; 6</b>	<b>&lt; 4</b>	<b>2</b>
WH-B01@6'	6'	08/26/2025	7.73	<b>7.35</b>	2.0	0.504
FL-B01@3'	3'	08/26/2025	7.87	3.81	0.84	0.311
SP-CS01	-	08/26/2025	7.67	1.47	0.81	0.279
<b>BACKGROUND</b>						
BG01@4'	4'	09/18/2025	7.89	3.09	0.97	<0.25
BG02@4'	4'	09/18/2025	8.32	2.95	0.96	<0.25
BG01@6'	6'	09/18/2025	<b>9.12</b>	<b>3.21</b>	<b>1.0</b>	<0.25
BG02@6'	6'	09/18/2025	7.30	2.30	0.80	<0.25
<b>Highest Background @ 3'-6' (SM &amp; SC)</b>			<b>9.12</b>	<b>3.21</b>	<b>1.0</b>	-

**Notes:**

(1) Standards for soil are taken from ECMC Table 915-1: Soil Suitability for Reclamation (Effective January 15, 2021)

ECMC = Colorado Energy & Carbon Management Commission

(<) = Analytical result is less than the indicated laboratory detection limit

mmhos/cm = millimhos per centimeter

mg/L = milligrams per liter

pH = Potential of Hydrogen

SAR = Sodium Adsorption Ratio

EC = Electrical Conductivity

SM = Silty Sand

SC = Clayey Sand

**BOLD** = Analytical result is in exceedance of ECMC Table 915-1: Soil Suitability for Reclamation Concentrations

**Highest background concentration**

- = Not applicable