

WELL NAME: NEW ELK 25-04, API #: 071-09535, INSP. # 716301758

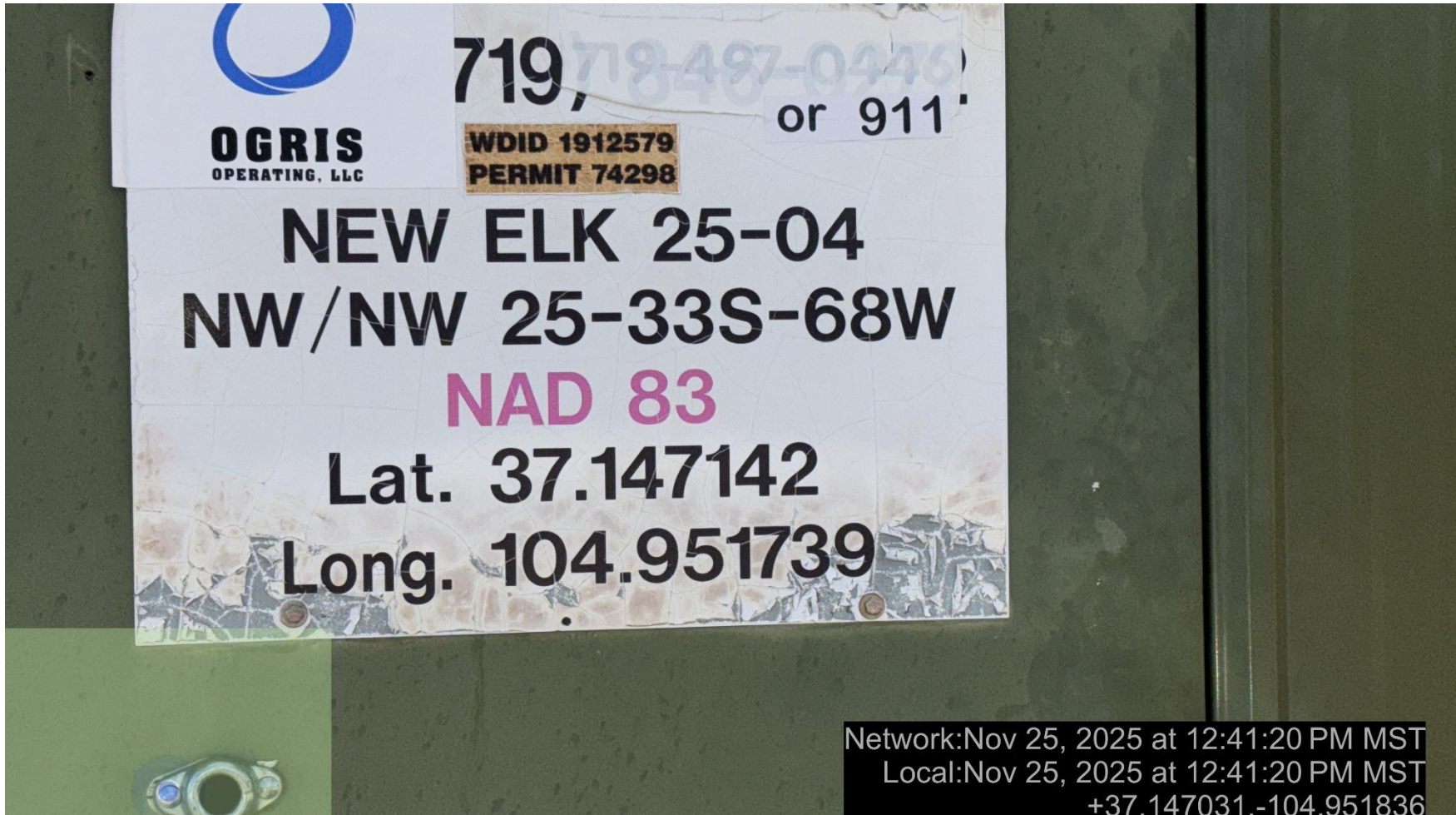


PHOTO 1: WELL SIGN



PHOTO 2: LOCATION.



PHOTO 3: WELLHEAD AND EQUIPMENT.



Network:Nov 25, 2025 at 12:43:00 PM MST
Local:Nov 25, 2025 at 12:43:00 PM MST
+37.147067,-104.951898
La Plata County

PHOTO 4: Impacted soil identified near compressor skid. Conduct maintenance on equipment, cleanup stained material and review self inspection processes. COMPLY WITH RULE 1002,(2).D. this is the 2nd notice for this corrective action, immediate action is required.



PHOTO 5: Impacted soil identified near compressor skid. Conduct maintenance on equipment, cleanup stained material and review self inspection processes. COMPLY WITH RULE 1002,(2).D. this is the 2nd notice for this corrective action, immediate action is required.



PHOTO 6: Impacted soil identified near compressor skid. Conduct maintenance on equipment, cleanup stained material and review self inspection processes. COMPLY WITH RULE 1002,(2).D. this is the 2nd notice for this corrective action, immediate action is required.



PHOTO 7: OILY WASTE IN COMPRESSOR SKID. DRAIN OILY WASTE REPAIR ALL LEAKS AND REMOVE IMPACTED SOIL PER RULE 1002..(2).D & 1002.f.(2)B, Comply with general provisions of the oil and gas act for wildlife protection AND SB-181. CA DATE 11-26-2025.