

WELL NAME: NEW ELK 35-13, API #: 071-07990, INSP. # 716301749

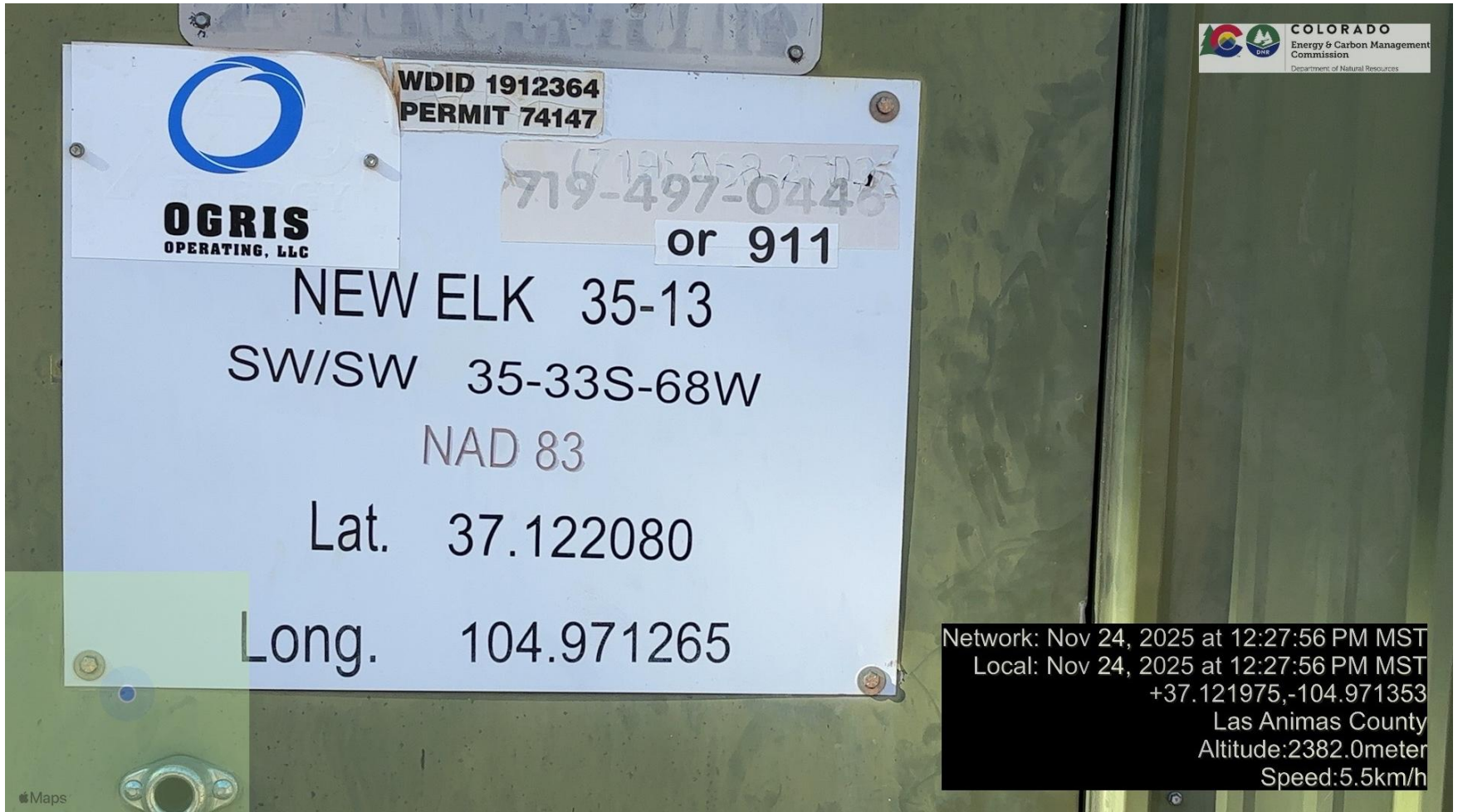


PHOTO 1: WELL SIGN



PHOTO 2: LOCATION.



Network: Nov 24, 2025 at 12:26:31 PM MST
Local: Nov 24, 2025 at 12:26:31 PM MST
+37.122104,-104.971244
Las Animas County
Altitude:2379.4meters
Speed:3.2km/h

PHOTO 3: WELLHEAD AND EQUIPMENT.

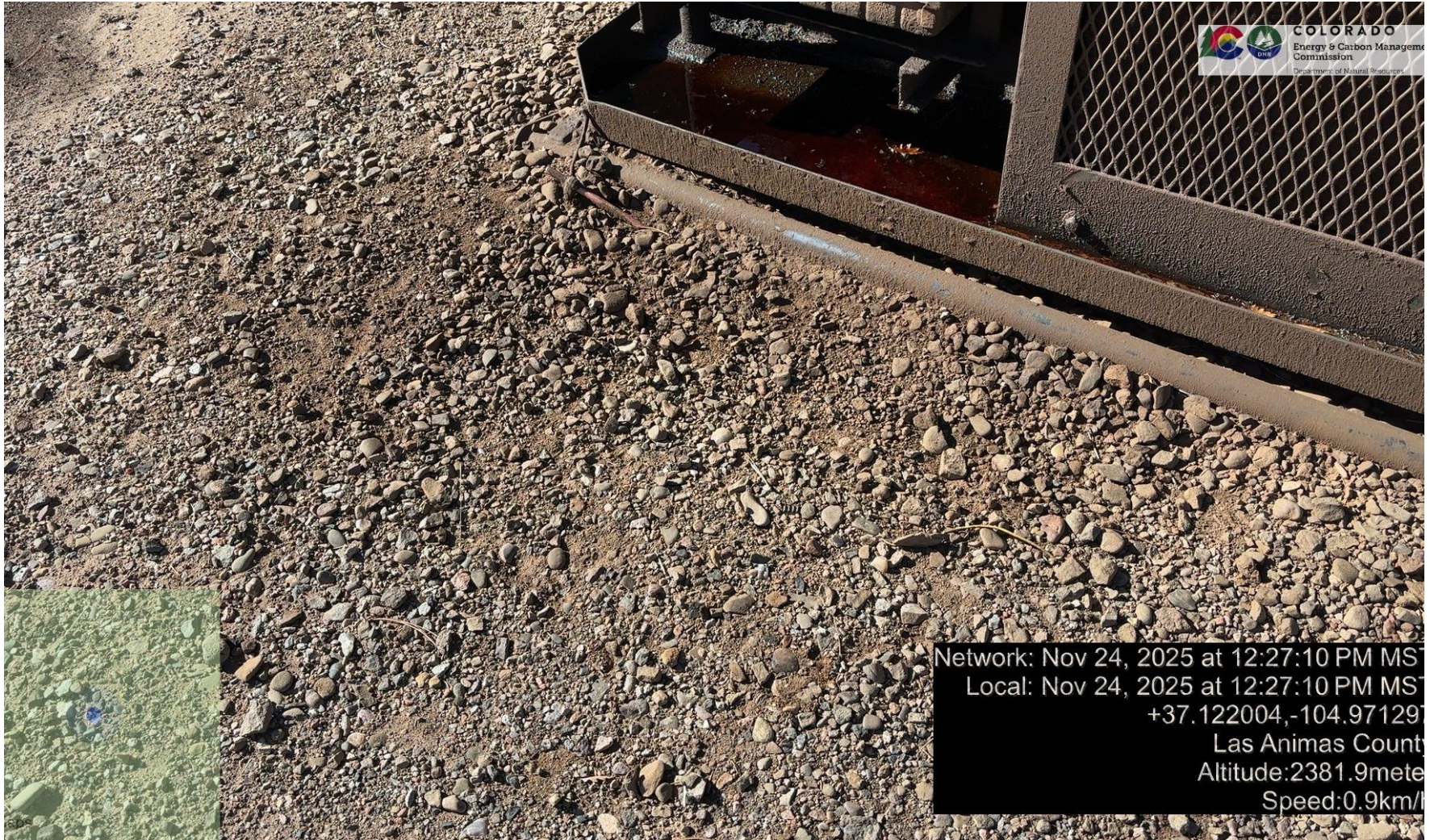


PHOTO 4: AREA OF IMPACTED SOIL NEAR COMPRESSOR SKID. Conduct maintenance on equipment, cleanup stained material and review self inspection processes. COMPLY WITH RULE 1002,(2).D. CA DATE 12-2-2025.



PHOTO 5: OILY WASTE IN COMPRESSOR SKID FROM LEAKING EQUIPMENT. DRAIN OILY WASTE REPAIR ALL LEAKS AND REMOVE IMPACTED SOIL PER RULE 1002..(2).D & 1002.f.(2)B, Comply with general provisions of the oil and gas act for wildlife protection AND SB-181. CA DATE 24 HOURS REMOVE OILY WASTE, FIX LEAKS BY 12-28-2025.



PHOTO 6: OIL SATURATION ALL OVER COMPRESSOR SKID.