

SITE ASSESSMENT REPORT
UHRICH 19,1,14-29 TANK BATTERY

ECMC REMEDIATION # 28080

Prepared for:

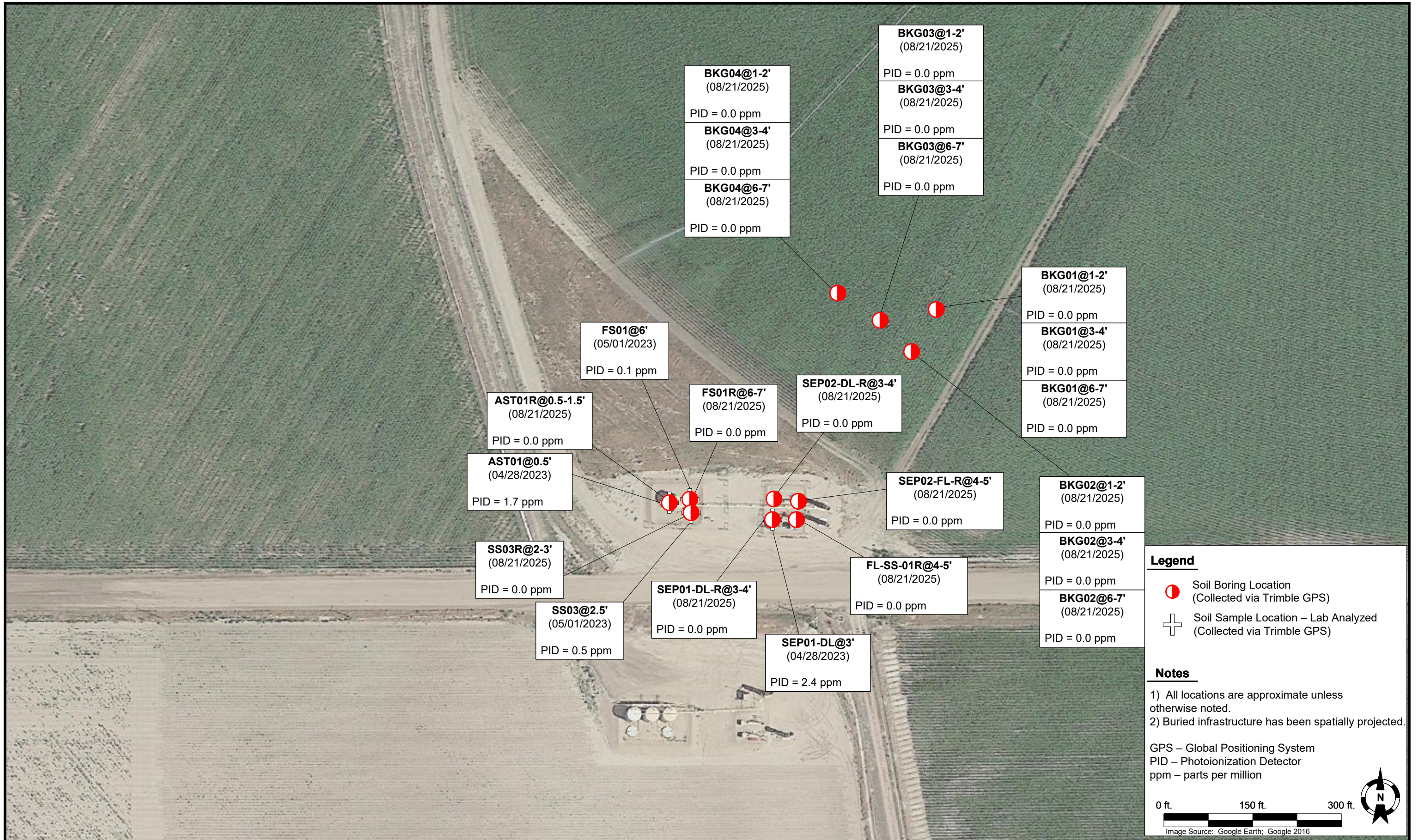


1099 18th Street
Suite 1500
Denver, CO 80202

Prepared by:




4725 Independence Street
Wheat Ridge, CO 80033



DATE: November 3, 2025

DESIGNED BY: J. Whritenour

DRAWN BY: C. Ebersbach



Tasman Inc.
 4725 Independence Street
 Wheat Ridge, CO 80033

Noble Energy, Inc. – 100322 – DJ Basin
Uhrich 19-29, 1, 14-29 Tank Battery
 SWSW, Section 29, Township 6 North, Range 64 West
 Weld County, Colorado

Soil Sample Location Map
 (04/28/2023, 05/01/2023 & 08/21/2025)

Figure 1

**TABLE 1
FIELD DATA SUMMARY TABLE
NOBLE ENERGY, INC. - 100322
UHRICH 19-29, 1, 14-29 TANK BATTERY WELD COUNTY, COLORADO
REM #28080**



Sample ID	Sample Date	Depth (ft. bgs)	GPS Data ¹ Latitude/Longitude		PDOP Value	VOC Concentration ² (ppm)
Decommissioning						
AST01@0.5'	04/28/2023	0.5	40.449973	-104.581182	1.0	1.7
FLARE01@0.5'	04/28/2023	0.5	40.449920	-104.580717	1.0	0.7
FLARE02@0.5'	04/28/2023	0.5	40.449959	-104.580716	1.0	1.2
MH01@0.5'	04/28/2023	0.5	40.449911	-104.580839	1.0	0.3
MH02@0.5'	04/28/2023	0.5	40.449908	-104.580856	1.0	0.0
SEP01-DL@3'	04/28/2023	3	40.449931	-104.580874	0.8	2.4
FS01@6'	05/01/2023	6	40.449977	-104.581127	NC	0.1
SS01@2.5'	05/01/2023	2.5	40.450006	-104.581125	NC	0.0
SS02@2.5'	05/01/2023	2.5	40.449976	-104.581097	NC	0.1
SS03@2.5'	05/01/2023	2.5	40.449949	-104.581124	NC	0.5
SS04@2.5'	05/01/2023	2.5	40.449976	-104.581156	NC	0.4
August 2025 Supplemental Site Investigation						
FS01R@6-7'	08/21/2025	6-7	40.449979	-104.581126	1.1	0.0
SS03R@2-3'	08/21/2025	2-3	40.449949	-104.581124	1.0	0.0
AST01R@0.5-1.5'	08/21/2025	0.5-1.5	40.449973	-104.581188	1.0	0.0
SEP01-DL-R@3-4'	08/21/2025	3-4	40.449936	-104.580877	1.0	0.0
SEP02-FL-R@4-5'	08/21/2025	4-5	40.449973	-104.580797	1.1	0.0
SEP02-DL-R@3-4'	08/21/2025	3-4	40.449975	-104.580869	1.0	0.0
FL-SS-01R@4-5'	08/21/2025	4-5	40.449935	-104.580808	0.8	0.0
Background Soil Samples						
BKG01@1-2'	08/21/2025	1-2	40.450418	-104.580376	0.8	0.0
BKG01@3-4'	08/21/2025	3-4	40.450418	-104.580376	0.8	0.0
BKG01@6-7'	08/21/2025	6-7	40.450418	-104.580376	0.8	0.0
BKG02@1-2'	08/21/2025	1-2	40.450321	-104.580451	0.9	0.0
BKG02@3-4'	08/21/2025	3-4	40.450321	-104.580451	0.9	0.0
BKG02@6-7'	08/21/2025	6-7	40.450321	-104.580451	0.9	0.0
BKG03@1-2'	08/21/2025	1-2	40.450394	-104.580549	0.8	0.0
BKG03@3-4'	08/21/2025	3-4	40.450394	-104.580549	0.8	0.0
BKG03@6-7'	08/21/2025	6-7	40.450394	-104.580549	0.8	0.0
BKG04@1-2'	08/21/2025	1-2	40.450456	-104.580674	0.8	0.0
BKG04@3-4'	08/21/2025	3-4	40.450456	-104.580674	0.8	0.0
BKG04@6-7'	08/21/2025	6-7	40.450456	-104.580674	0.8	0.0
BKG01@4' ^[3]	02/05/2025	4	40.444480	-104.571543	0.9	0.0
BKG01@6' ^[3]	02/05/2025	6	40.444480	-104.571543	0.9	0.0
BKG01@10' ^[3]	02/05/2025	10	40.444480	-104.571543	0.9	0.0
BKG01@14' ^[3]	02/05/2025	14	40.444480	-104.571543	0.9	0.0
BKG02@4' ^[3]	02/05/2025	4	40.444743	-104.571371	0.9	0.0
BKG02@6' ^[3]	02/05/2025	6	40.444743	-104.571371	0.9	0.0
BKG02@10' ^[3]	02/05/2025	10	40.444743	-104.571371	0.9	0.0
BKG02@14' ^[3]	02/05/2025	14	40.444743	-104.571371	0.9	0.0
BKG03@4' ^[3]	02/05/2025	4	40.445036	-104.571685	0.9	0.0
BKG03@6' ^[3]	02/05/2025	6	40.445036	-104.571685	0.9	0.0
BKG03@10' ^[3]	02/05/2025	10	40.445036	-104.571685	0.9	0.0
BKG03@14' ^[3]	02/05/2025	14	40.445036	-104.571685	0.9	0.0
BKG04@4' ^[3]	02/05/2025	4	40.444872	-104.572149	1.1	0.0

TABLE 1
FIELD DATA SUMMARY TABLE
NOBLE ENERGY, INC. - 100322
UHRICH 19-29, 1, 14-29 TANK BATTERY WELD COUNTY, COLORADO
REM #28080



Sample ID	Sample Date	Depth (ft. bgs)	GPS Data ¹		PDOP Value	VOC Concentration ² (ppm)
			Latitude/Longitude			
BKG04@6' ^[3]	02/05/2025	6	40.444872	-104.572149	1.1	0.0
BKG04@10' ^[3]	02/05/2025	10	40.444872	-104.572149	1.1	0.1
BKG04@14' ^[3]	02/05/2025	14	40.444872	-104.572149	1.1	0.0
BKG05@4' ^[3]	02/05/2025	4	40.444571	-104.572140	1.0	0.0
BKG05@6' ^[3]	02/05/2025	6	40.444571	-104.572140	1.0	0.0
BKG05@10' ^[3]	02/05/2025	10	40.444571	-104.572140	1.0	0.0
BKG05@14' ^[3]	02/05/2025	14	40.444571	-104.572140	1.0	0.0

Notes:

1. Global Positioning System (GPS) data is provided in decimal degrees using North American Datum (NAD) 83 UTM Zone 13 North.
2. Volatile organic compound (VOC) concentrations are measured in the field using a photoionization detector (PID).
3. Soil sample collected at nearby Hoffner 32-32 Wellhead (Remediation #25848)

PDOP = Position Dilution of Precision

ppm = Parts per million

ft. = Feet

bgs = Below ground surface

NC = Not collected

NA = Not analyzed

Source material characterization sample, excavated and transported off site for disposal.

Material excavated and transported off site for disposal.

TABLE 2
SUMMARY OF VOLATILE ORGANIC SOIL CHEMISTRY DATA
NOBLE ENERGY, INC. - 100322
UHRICH 19-29, 1, 14-29 TANK BATTERY WELD COUNTY, COLORADO
REM #28080



Sample ID	Sample Date	Depth (ft. bgs)	Benzene (mg/kg)	Toluene (mg/kg)	Ethyl-Benzene (mg/kg)	Xylenes (mg/kg)	1,2,4-Trimethyl-Benzene (mg/kg)	1,3,5-Trimethyl-Benzene (mg/kg)	Naphthalene (mg/kg)	TPH (mg/kg)	TPH GRO (mg/kg)	TPH DRO (mg/kg)	TPH ORO (mg/kg)
ECMC Table 915-1 Limits (Residential SSL)			1.2	490	5.8	58	30	27	2	500	500**		
ECMC Table 915-1 Limits (Protection of Groundwater SSL)			0.0026	0.69	0.78	9.9	0.0081	0.0087	0.0038	500	500**		
Decommissioning													
AST01@0.5'	04/28/2023	0.5	<0.0020	<0.0050	<0.0050	<0.010	<0.0050	<0.0050	<0.0038	<50	<0.50	<50	<50
SEP01-DL@3'	04/28/2023	3	<0.0020	<0.0050	<0.0050	<0.010	<0.0050	<0.0050	<0.0038	<50	<0.50	<50	<50
FS01@6'	05/01/2023	6	<0.0020	<0.0050	<0.0050	<0.010	<0.0050	<0.0050	<0.0038	<50	<0.50	<50	<50
SS03@2.5'	05/01/2023	2.5	<0.0020	<0.0050	<0.0050	<0.010	<0.0050	<0.0050	<0.0038	<50	<0.50	<50	<50
August 2025 Supplemental Site Investigation													
FS01R@6-7'	08/21/2025	6-7	<0.0011	<0.0021	<0.0021	<0.0021	<0.0021	<0.0021	<0.0021	24.51	<0.21	9.81	14.7
SS03R@2-3'	08/21/2025	2-3	<0.0012	<0.0023	<0.0023	<0.0023	<0.0023	<0.0023	<0.0023	<6.5	<0.23	<4.3	<6.5
AST01R@0.5-1.5'	08/21/2025	0.5-1.5	<0.0011	<0.0022	<0.0022	<0.0022	<0.0022	<0.0022	<0.0021	<6.5	<0.22	<4.3	<6.5
SEP01-DL-R@3-4'	08/21/2025	3-4	<0.0011	<0.0022	<0.0022	<0.0022	<0.0022	<0.0022	<0.0021	<6.7	<0.22	<4.5	<6.7
SEP02-FL-R@4-5'	08/21/2025	4-5	<0.0011	<0.0023	<0.0023	<0.0023	<0.0023	<0.0023	<0.0024	<6.5	<0.23	<4.4	<6.5
SEP02-DL-R@3-4'	08/21/2025	3-4	<0.0010	<0.0021	<0.0021	<0.0021	<0.0021	<0.0021	<0.0022	12.39	<0.21	4.49	7.90
FL-SS-01R@4-5'	08/21/2025	4-5	<0.0011	<0.0022	<0.0022	<0.0022	<0.0022	<0.0022	<0.0023	<6.9	<0.22	<4.6	<6.9

Notes:

- Bold** values exceed the ECMC Table 915-1 limit(s).
- Red & blue highlighted soil analytical values indicate an exceedance of the referenced soil screening level (SSL).
- ** Summation of GRO+DRO+ORO must be less than 500 mg/kg.

ECMC = Energy and Carbon Management Commission

(<) = Analytical result is less than the indicated laboratory reporting limit.

TPH-GRO = Total petroleum hydrocarbons - gasoline range organics

TPH-DRO = Total petroleum hydrocarbons - diesel range organics

TPH-ORO = Total petroleum hydrocarbons - oil range organics

mg/kg = Milligrams per kilogram

ft. = Feet

bgs = Below ground surface

NA = Not analyzed

Source material characterization sample, excavated and transported off site for disposal.

Material excavated and transported off site for disposal.

TABLE 3
SUMMARY OF POLYCYCLIC AROMATIC HYDROCARBON SOIL CHEMISTRY DATA
NOBLE ENERGY, INC. - 100322
UHRICH 19-29, 1, 14-29 TANK BATTERY WELD COUNTY, COLORADO
REM #28080



Sample ID	Sample Date	Depth (ft. bgs)	Acenaphthene (mg/kg)	Anthracene (mg/kg)	Benzo (a) Anthracene (mg/kg)	Benzo (a) Pyrene (mg/kg)	Benzo (b) Fluoranthene (mg/kg)	Benzo (k) Fluoranthene (mg/kg)	Chrysene (mg/kg)	Dibenzo (a,h) Anthracene (mg/kg)	Fluoranthene (mg/kg)	Fluorene (mg/kg)	Indeno (1,2,3-cd) Pyrene (mg/kg)	Pyrene (mg/kg)	1-Methyl - Naphthalene (mg/kg)	2-Methyl - Naphthalene (mg/kg)
ECMC Table 915-1 Limits (Residential SSL)			360	1800	1.1	0.11	1.1	11	110	0.11	240	240	1.1	180	18	24
ECMC Table 915-1 Limits (Protection of Groundwater SSL)			0.55	5.8	0.011	0.24	0.3	2.9	9	0.096	8.9	0.54	0.98	1.3	0.006	0.019
Decommissioning																
AST01@0.5'	04/28/2023	0.5	<0.00500	<0.00500	<0.00500	<0.00500	<0.00500	<0.00500	<0.00500	<0.00500	<0.00500	<0.00500	<0.00500	<0.00500	<0.00500	<0.00500
SEP01-DL@3'	04/28/2023	3	<0.00500	<0.00500	<0.00500	<0.00500	<0.00500	<0.00500	<0.00500	<0.00500	<0.00500	<0.00500	<0.00500	<0.00500	<0.00500	<0.00500
FS01@6'	05/01/2023	6	<0.00500	<0.00500	<0.00500	<0.00500	<0.00500	<0.00500	<0.00500	<0.00500	<0.00500	<0.00500	<0.00500	<0.00500	<0.00500	<0.00500
SS03@2.5'	05/01/2023	2.5	<0.00500	<0.00500	<0.00500	<0.00500	<0.00500	<0.00500	<0.00500	<0.00500	<0.00500	<0.00500	<0.00500	<0.00500	<0.00500	<0.00500
August 2025 Supplemental Site Investigation																
FS01R@6-7'	08/21/2025	6-7	<0.0042	<0.0042	<0.0052	<0.0042	<0.0042	<0.0042	<0.0042	<0.0042	<0.0042	<0.0042	<0.0042	<0.0042	<0.0042	<0.0042
SS03R@2-3'	08/21/2025	2-3	<0.0045	<0.0045	<0.0057	<0.0045	<0.0045	<0.0045	<0.0045	<0.0045	<0.0045	<0.0045	<0.0045	<0.0045	<0.0045	<0.0045
AST01R@0.5-1.5'	08/21/2025	0.5-1.5	<0.0041	<0.0041	<0.0052	<0.0041	<0.0041	<0.0041	<0.0041	<0.0041	<0.0041	<0.0041	<0.0041	<0.0041	<0.0041	<0.0041
SEP01-DL-R@3-4'	08/21/2025	3-4	<0.0043	<0.0043	<0.0053	<0.0043	<0.0043	<0.0043	<0.0043	<0.0043	<0.0043	<0.0043	<0.0043	<0.0043	<0.0043	<0.0043
SEP02-FL-R@4-5'	08/21/2025	4-5	<0.0047	<0.0047	<0.0059	<0.0047	<0.0047	<0.0047	<0.0047	<0.0047	<0.0047	<0.0047	<0.0047	<0.0047	<0.0047	<0.0047
SEP02-DL-R@3-4'	08/21/2025	3-4	<0.0045	<0.0045	<0.0056	<0.0045	<0.0045	<0.0045	<0.0045	<0.0045	<0.0045	<0.0045	<0.0045	<0.0045	<0.0045	<0.0045
FL-SS-01R@4-5'	08/21/2025	4-5	<0.0046	<0.0046	<0.0057	<0.0046	<0.0046	<0.0046	<0.0046	<0.0046	<0.0046	<0.0046	<0.0046	<0.0046	<0.0046	<0.0046

Notes:

- 1. Bold values exceed the ECMC Table 915-1 limit(s).**
- 2. Red & blue highlighted soil analytical values indicate an exceedance of the referenced soil screening level (SSL).**
- 3. * Indicates laboratory minimum detection limit in excess of SSL.**

ECMC = Energy and Carbon Management Commission

(<) = Analytical result is less than the indicated laboratory reporting limit.

mg/kg = Milligrams per kilogram

ft. = Feet

bgs = Below ground surface

NA = Not analyzed

Source material characterization sample, excavated and transported off site for disposal.

Material excavated and transported off site for disposal.

TABLE 4
SUMMARY OF SOIL SUITABILITY FOR RECLAMATION
NOBLE ENERGY, INC. - 100322
UHRICH 19-29, 1, 14-29 TANK BATTERY WELD COUNTY, COLORADO
REM #28080



Sample ID	Sample Date	Depth (ft. bgs)	pH (Standard Units)	EC (mmhos/cm)	SAR (Standard Units)	Boron (mg/L)
ECMC Table 915-1 Soil Suitability Limits			6 - 8.3	<4	<6	2
Decommissioning						
AST01@0.5'	04/28/2023	0.5	7.74	0.657	0.342	0.304
SEP01-DL@3'	04/28/2023	3	7.89	0.348	0.149	0.499
FS01@6'	05/01/2023	6	8.27	0.203	0.170	0.199
SS03@2.5'	05/01/2023	2.5	8.09	0.137	0.0113	0.164
August 2025 Supplemental Site Investigation						
FS01R@6-7'	08/21/2025	6-7	7.70	0.44	0.289	<0.50
SS03R@2-3'	08/21/2025	2-3	7.68	0.48	0.0720	<0.50
AST01R@0.5-1.5'	08/21/2025	0.5-1.5	7.53	1.3	0.475	<0.50
SEP01-DL-R@3-4'	08/21/2025	3-4	7.84	1.4	0.113	<0.50
SEP02-FL-R@4-5'	08/21/2025	4-5	7.86	0.36	0.151	<0.50
SEP02-DL-R@3-4'	08/21/2025	3-4	7.64	0.59	0.432	<0.50
FL-SS-01R@4-5'	08/21/2025	4-5	7.96	0.43	0.0954	<0.50
Background Soil Samples						
BKG01@1-2'	08/21/2025	1-2	7.65	1.4	1.91	<0.50
BKG01@3-4'	08/21/2025	3-4	7.64	1.4	1.27	<0.50
BKG01@6-7'	08/21/2025	6-7	7.80	0.78	1.75	<0.50
BKG02@1-2'	08/21/2025	1-2	7.39	1.9	2.40	<0.50
BKG02@3-4'	08/21/2025	3-4	7.70	2.1	2.16	<0.50
BKG02@6-7'	08/21/2025	6-7	7.70	1.8	4.93	<0.50
BKG03@1-2'	08/21/2025	1-2	7.31	2.8	2.61	<0.50
BKG03@3-4'	08/21/2025	3-4	7.69	2.9	2.78	<0.50
BKG03@6-7'	08/21/2025	6-7	7.81	1.2	4.68	<0.50
BKG04@1-2'	08/21/2025	1-2	7.60	3.3	2.14	<0.50
BKG04@3-4'	08/21/2025	3-4	7.78	4.3	3.97	<0.50
BKG04@6-7'	08/21/2025	6-7	7.48	1.4	3.07	<0.50
BKG01@4' ^[4]	02/05/2025	4	8.44	1.07	5.52	<2.00
BKG01@6' ^[4]	02/05/2025	6	8.68	0.924	5.94	<2.00
BKG01@10' ^[4]	02/05/2025	10	8.77	1.07	7.55	<2.00
BKG01@14' ^[4]	02/05/2025	14	8.74	1.26	6.33	<2.00
BKG02@4' ^[4]	02/05/2025	4	8.63	0.665	5.84	<2.00
BKG02@6' ^[4]	02/05/2025	6	8.33	1.41	5.44	<2.00
BKG02@10' ^[4]	02/05/2025	10	8.39	1.24	4.33	<2.00
BKG02@14' ^[4]	02/05/2025	14	7.68	1.67	3.61	<2.00

TABLE 4
SUMMARY OF SOIL SUITABILITY FOR RECLAMATION
NOBLE ENERGY, INC. - 100322
UHRICH 19-29, 1, 14-29 TANK BATTERY WELD COUNTY, COLORADO
REM #28080



Sample ID	Sample Date	Depth (ft. bgs)	pH (Standard Units)	EC (mmhos/cm)	SAR (Standard Units)	Boron (mg/L)
ECMC Table 915-1 Soil Suitability Limits			6 - 8.3	<4	<6	2
BKG03@4' ^[4]	02/05/2025	4	8.35	0.0141	5.75	<2.00
BKG03@6' ^[4]	02/05/2025	6	8.54	0.676	3.36	<2.00
BKG03@10' ^[4]	02/05/2025	10	8.89	0.196	1.27	<2.00
BKG03@14' ^[4]	02/05/2025	14	8.47	0.221	1.37	<2.00
BKG04@4' ^[4]	02/05/2025	4	8.40	0.974	3.27	<2.00
BKG04@6' ^[4]	02/05/2025	6	8.54	0.710	2.68	<2.00
BKG04@10' ^[4]	02/05/2025	10	8.97	0.234	2.08	<2.00
BKG04@14' ^[4]	02/05/2025	14	8.66	0.448	2.65	<2.00
BKG05@4' ^[4]	02/05/2025	4	8.52	0.947	2.93	<2.00
BKG05@6' ^[4]	02/05/2025	6	8.55	0.848	3.00	<2.00
BKG05@10' ^[4]	02/05/2025	10	8.74	0.514	2.77	<2.00
BKG05@14' ^[4]	02/05/2025	14	8.41	0.587	3.05	<2.00
Maximum Background Concentration			-	-	-	-

Notes:

1. **Bold** faced values exceed the ECMC Table 915-1 limit(s), but are within background concentrations.
2. **Bold** faced values exceed the ECMC Table 915-1 limit(s) and native background concentrations.
3. Brown highlighted soil analytical values indicate a regulatory exceedance.
4. Soil sample collected at nearby Hoffner 32-32 Wellhead (Remediation #25848)

ECMC = Energy and Carbon Management Commission

(<) = Analytical result is less than the indicated laboratory reporting limit.

mg/L = Milligrams per liter

ft. = Feet

bgs = Below ground surface

NA = Not analyzed

EC = Electrical conductivity

SAR = Sodium adsorption ratio

mmhos/cm = Millimhos per centimeter

Source material characterization sample, excavated and transported off site for disposal.

Material excavated and transported off site for disposal.

TABLE 5
SUMMARY OF METALS IN SOIL CHEMISTRY DATA
NOBLE ENERGY, INC. - 100322
UHRICH 19-29, 1, 14-29 TANK BATTERY WELD COUNTY, COLORADO
REM #28080



Sample ID	Sample Date	Depth (ft. bgs)	Arsenic (mg/kg)	Barium (mg/kg)	Cadmium (mg/kg)	Chromium (VI) ⁶ (mg/kg)	Copper (mg/kg)	Lead (mg/kg)	Nickel (mg/kg)	Selenium (mg/kg)	Silver (mg/kg)	Zinc (mg/kg)
ECMC Table 915-1 Limits (Residential SSL)			0.68	15000	71	0.3	3100	400	1500	390	390	23000
ECMC Table 915-1 Limits (Protection of Groundwater SSL)			0.29	82	0.38	0.00067	46	14	26	0.26	0.8	370
Decommissioning												
AST01@0.5'	04/28/2023	0.5	NA	NA	NA	NA	NA	NA	NA	NA	NA	NA
SEP01-DL@3'	04/28/2023	3	NA	NA	NA	NA	NA	NA	NA	NA	NA	NA
FS01@6'	05/01/2023	6	NA	NA	NA	NA	NA	NA	NA	NA	NA	NA
SS03@2.5'	05/01/2023	2.5	NA	NA	NA	NA	NA	NA	NA	NA	NA	NA
August 2025 Supplemental Site Investigation												
FS01R@6-7'	08/21/2025	6-7	3.1	91.2	0.14	<0.44	5.1	6.5	5.0	<0.22	<0.056	20.4
SS03R@2-3'	08/21/2025	2-3	3.9	110	0.15	<0.47	4.6	7.2	5.7	<0.22	<0.055	19.2
AST01R@0.5-1.5'	08/21/2025	0.5-1.5	3.4	155	0.15	<0.44	5.6	8.3	5.2	<0.20	<0.051	21.3
SEP01-DL-R@3-4'	08/21/2025	3-4	3.3	121	0.16	<0.46	5.3	7.5	5.3	<0.21	<0.052	20.4
SEP02-FL-R@4-5'	08/21/2025	4-5	4.7	171	0.23	<0.46	7.0	9.9	7.7	<0.24	<0.059	27.7
SEP02-DL-R@3-4'	08/21/2025	3-4	2.8	80.5	0.18	<0.45	6.7	8.1	5.2	<0.21	0.072	24.6
FL-SS-01R@4-5'	08/21/2025	4-5	4.4	201	0.39	<0.45	6.0	8.4	6.6	<0.23	0.079	23.4
Background Soil Samples												
BKG01@1-2'	08/21/2025	1-2	3.3	99.3	0.17	<0.44	7.4	7.9	6.7	<0.23	0.061	23.6
BKG01@3-4'	08/21/2025	3-4	4.7	243	0.16	<0.46	4.4	6.4	5.7	<0.23	<0.057	18.8
BKG01@6-7'	08/21/2025	6-7	2.8	72.8	0.11	<0.44	3.2	4.3	3.8	<0.20	<0.050	13.7
BKG02@1-2'	08/21/2025	1-2	3.5	100	0.12	<0.46	6.3	7.2	6.1	<0.22	<0.054	21.1
BKG02@3-4'	08/21/2025	3-4	4.8	110	0.16	<0.45	4.9	6.4	5.7	<0.22	<0.055	18.1
BKG02@6-7'	08/21/2025	6-7	4.4	25.9	0.085	<0.44	3.5	3.7	3.8	<0.20	<0.050	13.0
BKG03@1-2'	08/21/2025	1-2	3.1	72.5	0.14	<0.46	6.7	7.1	5.7	<0.22	<0.054	21.9
BKG03@3-4'	08/21/2025	3-4	4.2	326	0.10	<0.44	4.0	5.4	4.9	<0.22	<0.055	16.7
BKG03@6-7'	08/21/2025	6-7	4.3	32.0	0.099	<0.43	3.8	4.6	3.8	<0.20	<0.050	15.1
BKG04@1-2'	08/21/2025	1-2	4.0	118	0.19	<0.46	6.6	7.6	6.6	<0.23	<0.057	24.0
BKG04@3-4'	08/21/2025	3-4	4.2	233	0.12	<0.44	4.3	5.9	5.3	<0.21	<0.052	18.0
BKG04@6-7'	08/21/2025	6-7	6.6	44.6	0.16	<0.40	5.5	5.0	6.1	<0.20	<0.050	18.7
BKG01@4' ^[7]	02/05/2025	4	4.13	80.6	<0.200	<0.30	3.60	5.26	3.94	<0.260	0.0203	15.1
BKG01@6' ^[7]	02/05/2025	6	3.74	77.9	<0.200	<0.30	3.54	4.88	3.75	<0.260	<0.0200	15.6
BKG01@10' ^[7]	02/05/2025	10	4.17	92.8	<0.200	<0.30	3.35	5.42	3.77	<0.260	<0.0200	15.7
BKG01@14' ^[7]	02/05/2025	14	3.17	109	<0.200	<0.30	3.31	4.89	3.65	<0.260	0.0206	15.5
BKG02@4' ^[7]	02/05/2025	4	7.93	64.3	0.221	<0.30	5.00	5.35	5.02	<0.260	0.0318	19.1
BKG02@6' ^[7]	02/05/2025	6	10.0	74.3	0.211	<0.30	4.98	4.78	3.66	<0.260	<0.0200	13.9
BKG02@10' ^[7]	02/05/2025	10	5.34	69.2	<0.200	<0.30	3.71	5.19	3.72	<0.260	<0.0200	14.4
BKG02@14' ^[7]	02/05/2025	14	3.89	116	<0.200	<0.30	2.84	3.94	3.16	<0.260	<0.0200	13.2
BKG03@4' ^[7]	02/05/2025	4	9.17	126	0.249	<0.30	5.09	7.03	6.19	<0.260	0.0450	19.6
BKG03@6' ^[7]	02/05/2025	6	4.14	84.9	<0.200	<0.30	3.34	9.37	3.92	<0.260	<0.0200	14.2
BKG03@10' ^[7]	02/05/2025	10	4.81	62.8	0.200	<0.30	3.79	5.55	3.99	<0.260	<0.0200	16.0
BKG03@14' ^[7]	02/05/2025	14	3.47	95.9	<0.200	<0.30	3.34	4.77	3.79	<0.260	<0.0200	15.2

TABLE 5
SUMMARY OF METALS IN SOIL CHEMISTRY DATA
NOBLE ENERGY, INC. - 100322
UHRICH 19-29, 1, 14-29 TANK BATTERY WELD COUNTY, COLORADO
REM #28080



Sample ID	Sample Date	Depth (ft. bgs)	Arsenic (mg/kg)	Barium (mg/kg)	Cadmium (mg/kg)	Chromium (VI) ⁶ (mg/kg)	Copper (mg/kg)	Lead (mg/kg)	Nickel (mg/kg)	Selenium (mg/kg)	Silver (mg/kg)	Zinc (mg/kg)
ECMC Table 915-1 Limits (Residential SSL)			0.68	15000	71	0.3	3100	400	1500	390	390	23000
ECMC Table 915-1 Limits (Protection of Groundwater SSL)			0.29	82	0.38	0.00067	46	14	26	0.26	0.8	370
BKG04@4' ^[7]	02/05/2025	4	6.70	133	0.244	<0.30	4.80	6.56	5.91	<0.260	0.0283	19.3
BKG04@6' ^[7]	02/05/2025	6	4.59	135	0.255	<0.30	3.60	6.83	5.42	<0.260	<0.0200	18.1
BKG04@10' ^[7]	02/05/2025	10	5.26	58.8	0.213	<0.30	5.26	9.67	6.04	<0.260	0.0261	24.2
BKG04@14' ^[7]	02/05/2025	14	5.27	158	0.433	<0.30	6.26	13.2	6.88	<0.260	0.0340	28.5
BKG05@4' ^[7]	02/05/2025	4	5.39	221	0.246	<0.30	4.48	7.69	5.52	<0.260	0.0233	21.0
BKG05@6' ^[7]	02/05/2025	6	5.42	260	0.333	<0.30	6.22	12.1	6.56	<0.260	0.0424	28.4
BKG05@10' ^[7]	02/05/2025	10	4.82	53.7	0.440	<0.30	6.42	11.2	6.24	<0.260	0.0321	27.1
BKG05@14' ^[7]	02/05/2025	14	5.19	71.8	0.256	<0.30	7.29	13.5	7.00	<0.260	0.0325	31.6
1.25x Maximum Background Concentration			12.5	408	0.550	-	-	-	-	-	-	-

Notes:

1. **Bold** faced values exceed the ECMC Table 915-1 limit(s), but are within 1.25x background concentrations.
2. **Red** faced values exceed the ECMC Table 915-1 limit(s) and native background concentrations.
3. Red & blue highlighted soil analytical values indicate an exceedance of the referenced soil screening level (SSL).
4. Reporting limit used for 1.25 multiplier when all background results for a specific metal are non-detect.
5. * Indicates laboratory minimum detection limit in excess of SSL.
6. Compound falls within the ECMC Table 915-1 footnote 9.
7. Soil sample collected at nearby Hoffner 32-32 Wellhead (Remediation #25848)

ECMC = Energy & Carbon Management Commission

(<) = Analytical result is less than the indicated laboratory reporting limit.

mg/kg = Milligrams per kilogram

ft. = Feet

bgs = Below ground surface

NA = Not analyzed

Source material characterization sample, excavated and transported off site for disposal.

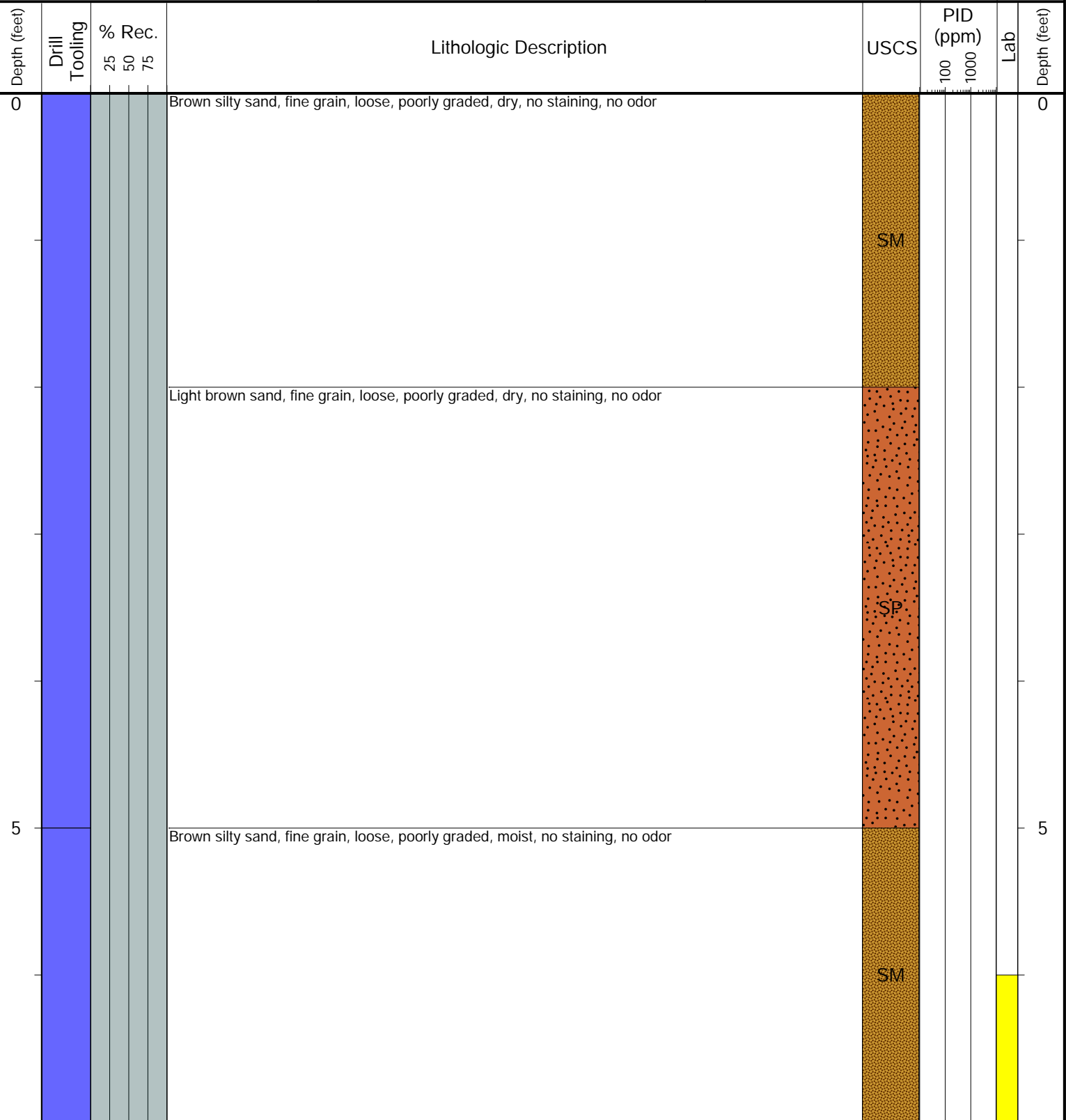
Material excavated and transported off site for disposal.



CLIENT: Noble
LOGGED BY: Nelson Davis
PROJECT MANAGER: Allan Engelhardt
DRILLING CONTRACTOR: Tasman
DRILLING EQUIPMENT: Geoprobe
DRILL BIT SIZE (INCHES): 3.25
DATE STARTED - COMPLETED: 08/21/25-08/21/25
TOTAL WELL DEPTH (FT. BGS): 7
DEPTH TO WATER (FT. BGS): Not Encountered ▼

Uhrich 19-29, 1, 14-29
BORING ID: FS01R
LOCATION: Center of Excavation
LATITUDE (NAD 83): 40.449979
LONGITUDE (NAD 83): -104.581126
GROUND ELEVATION (FT. AMSL): Not Measured
ABANDONMENT METHOD: Native Material

4725 Independence St.
Wheat Ridge, CO 80033



Drilling / Sample Method:

- Macro-Core
- Hand Auger
- Expendable Well Tip
- HydroPunch Groundwater Sampler

Laboratory Sample Types:

- Geotechnical Lab
- Analytical Chemistry Lab
- Geotechnical & Analytical Chemistry Lab



CLIENT: Noble
LOGGED BY: Nelson Davis
PROJECT MANAGER: Allan Engelhardt
DRILLING CONTRACTOR: Tasman
DRILLING EQUIPMENT: Geoprobe
DRILL BIT SIZE (INCHES): 3.25
DATE STARTED - COMPLETED: 08/21/25-08/21/25
TOTAL WELL DEPTH (FT. BGS): 3
DEPTH TO WATER (FT. BGS): Not Encountered ▼

Uhrich 19-29, 1, 14-29
BORING ID: SS03R
LOCATION: South Wall of Excavation
LATITUDE (NAD 83): 40.449949
LONGITUDE (NAD 83): -104.581124
GROUND ELEVATION (FT. AMSL): Not Measured
ABANDONMENT METHOD: Native Material

4725 Independence St.
 Wheat Ridge, CO 80033

Depth (feet)	Drill Tooling	% Rec. 25 50 75	Lithologic Description	USCS	PID (ppm)		Lab	Depth (feet)
					100	1000		
0			Brown silty sand, fine grain, poorly graded, loose, dry, no staining, no odor	SM				0
			Light brown sand, fine grain, poorly graded, loose, moist, no staining, no odor	SP				

Drilling / Sample Method:

- Macro-Core
- Hand Auger
- Expendable Well Tip
- HydroPunch Groundwater Sampler

Laboratory Sample Types:

- Geotechnical Lab
- Analytical Chemistry Lab
- Geotechnical & Analytical Chemistry Lab



CLIENT: Noble
LOGGED BY: Nelson Davis
PROJECT MANAGER: Allan Engelhardt
DRILLING CONTRACTOR: Tasman
DRILLING EQUIPMENT: Geoprobe
DRILL BIT SIZE (INCHES): 3.25
DATE STARTED - COMPLETED: 08/21/25-08/21/25
TOTAL WELL DEPTH (FT. BGS): 2
DEPTH TO WATER (FT. BGS): Not Encountered ▼

Uhrich 19-29, 1, 14-29
BORING ID: AST01R
LOCATION: W of FS01R
LATITUDE (NAD 83): 40.449973
LONGITUDE (NAD 83): -104.581188
GROUND ELEVATION (FT. AMSL): Not Measured
ABANDONMENT METHOD: Native Material

4725 Independence St.
 Wheat Ridge, CO 80033

Depth (feet)	Drill Tooling	% Rec. 25 50 75	Lithologic Description	USCS	PID (ppm)		Lab	Depth (feet)
					100	1000		
0			Brown silty sand, fine grain, poorly graded, dry, no staining, no odor	SM				0

Drilling / Sample Method:

- Macro-Core
- Hand Auger
- Expendable Well Tip
- HydroPunch Groundwater Sampler

Laboratory Sample Types:

- Geotechnical Lab
- Analytical Chemistry Lab
- Geotechnical & Analytical Chemistry Lab



CLIENT: Noble
LOGGED BY: Nelson Davis
PROJECT MANAGER: Allan Engelhardt
DRILLING CONTRACTOR: Tasman
DRILLING EQUIPMENT: Geoprobe
DRILL BIT SIZE (INCHES): 3.25
DATE STARTED - COMPLETED: 08/21/25-08/21/25
TOTAL WELL DEPTH (FT. BGS): 4
DEPTH TO WATER (FT. BGS): Not Encountered ▼

Uhrich 19-29, 1, 14-29
BORING ID: SEP01-DL-R
LOCATION: W of FL-SS-01-R
LATITUDE (NAD 83): 40.449936
LONGITUDE (NAD 83): -104.580877
GROUND ELEVATION (FT. AMSL): Not Measured
ABANDONMENT METHOD: Native Material

4725 Independence St.
Wheat Ridge, CO 80033

Depth (feet)	Drill Tooling	% Rec. 25 50 75	Lithologic Description	USCS	PID (ppm)		Lab	Depth (feet)
					100	1000		
0	Hand Auger		Brown silty sand, fine grain, poorly graded, loose, dry, no staining, no odor	SM				0
			Light brown sand, fine grain, poorly graded, loose, dry, no staining, no odor					SP

Drilling / Sample Method:

- Macro-Core
- Hand Auger
- Expendable Well Tip
- HydroPunch Groundwater Sampler

Laboratory Sample Types:

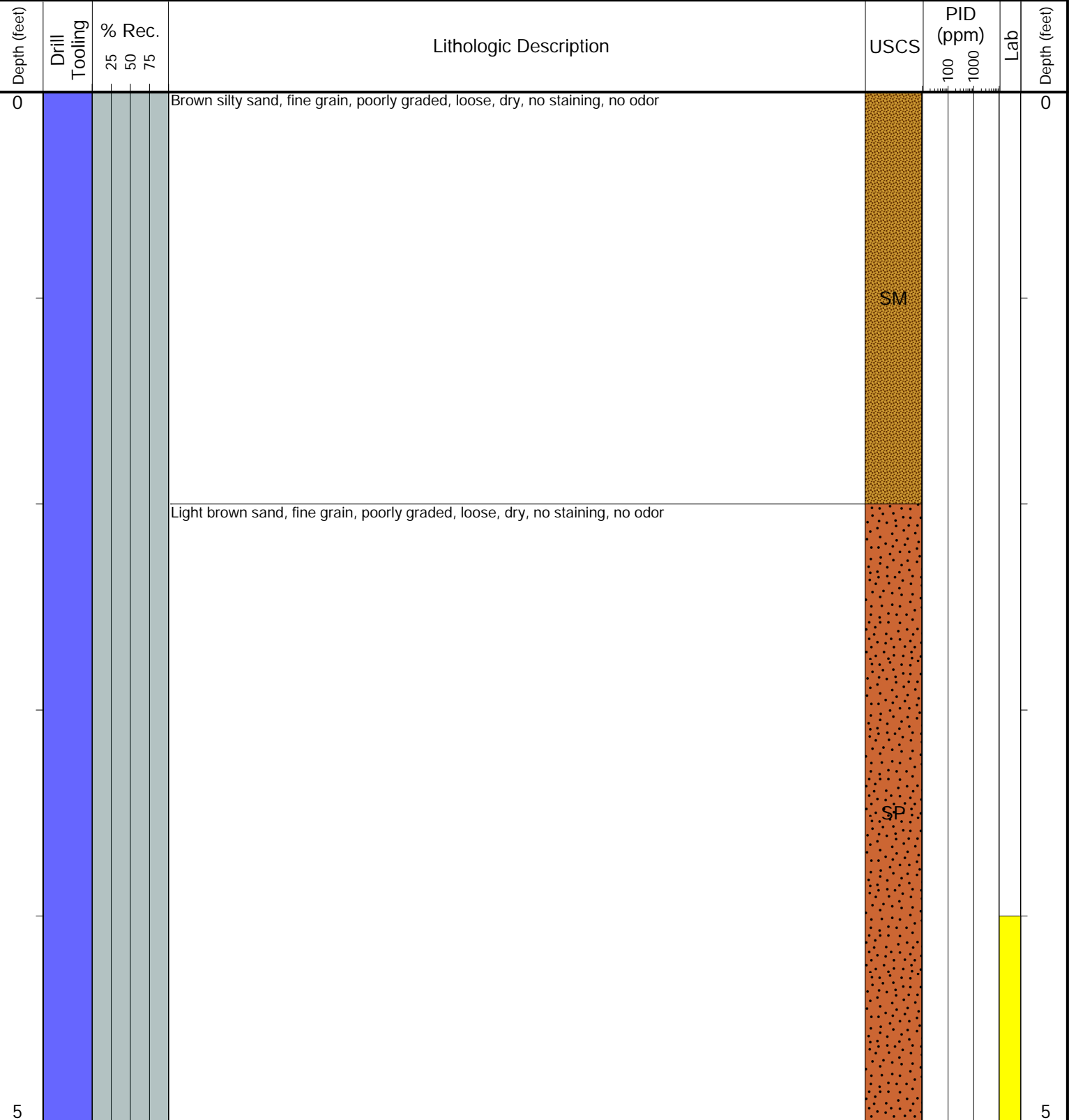
- Geotechnical Lab
- Analytical Chemistry Lab
- Geotechnical & Analytical Chemistry Lab



CLIENT: Noble
LOGGED BY: Nelson Davis
PROJECT MANAGER: Allan Engelhardt
DRILLING CONTRACTOR: Tasman
DRILLING EQUIPMENT: Geoprobe
DRILL BIT SIZE (INCHES): 3.25
DATE STARTED - COMPLETED: 08/21/25-08/21/25
TOTAL WELL DEPTH (FT. BGS): 5
DEPTH TO WATER (FT. BGS): Not Encountered ▼

Uhrich 19-29, 1, 14-29
BORING ID: SEP02-FL-R
LOCATION: N of FL-SS-01-R
LATITUDE (NAD 83): 40.449973
LONGITUDE (NAD 83): -104.580797
GROUND ELEVATION (FT. AMSL): Not Measured
ABANDONMENT METHOD: Native Material

4725 Independence St.
Wheat Ridge, CO 80033



Drilling / Sample Method:

- Macro-Core
- Hand Auger
- Expendable Well Tip
- HydroPunch Groundwater Sampler

Laboratory Sample Types:

- Geotechnical Lab
- Analytical Chemistry Lab
- Geotechnical & Analytical Chemistry Lab



CLIENT: Noble
LOGGED BY: Nelson Davis
PROJECT MANAGER: Allan Engelhardt
DRILLING CONTRACTOR: Tasman
DRILLING EQUIPMENT: Geoprobe
DRILL BIT SIZE (INCHES): 3.25
DATE STARTED - COMPLETED: 08/21/25-08/21/25
TOTAL WELL DEPTH (FT. BGS): 4
DEPTH TO WATER (FT. BGS): Not Encountered ▼

Uhrich 19-29, 1, 14-29
BORING ID: SEP02-DL-R
LOCATION: N of SEP01-DL-R
LATITUDE (NAD 83): 40.449975
LONGITUDE (NAD 83): -104.580869
GROUND ELEVATION (FT. AMSL): Not Measured
ABANDONMENT METHOD: Native Material

4725 Independence St.
 Wheat Ridge, CO 80033

Depth (feet)	Drill Tooling	% Rec. 25 50 75	Lithologic Description	USCS	PID (ppm)		Lab	Depth (feet)
					100	1000		
0			Brown silty sand, fine grain, 10% gravels, poorly graded, loose, dry, no staining, no odor	SM				0
			Light brown sand, fine grain, poorly graded, loose, dry, no staining, no odor	SP				

Drilling / Sample Method:

- Macro-Core
- Hand Auger
- Expendable Well Tip
- HydroPunch Groundwater Sampler

Laboratory Sample Types:

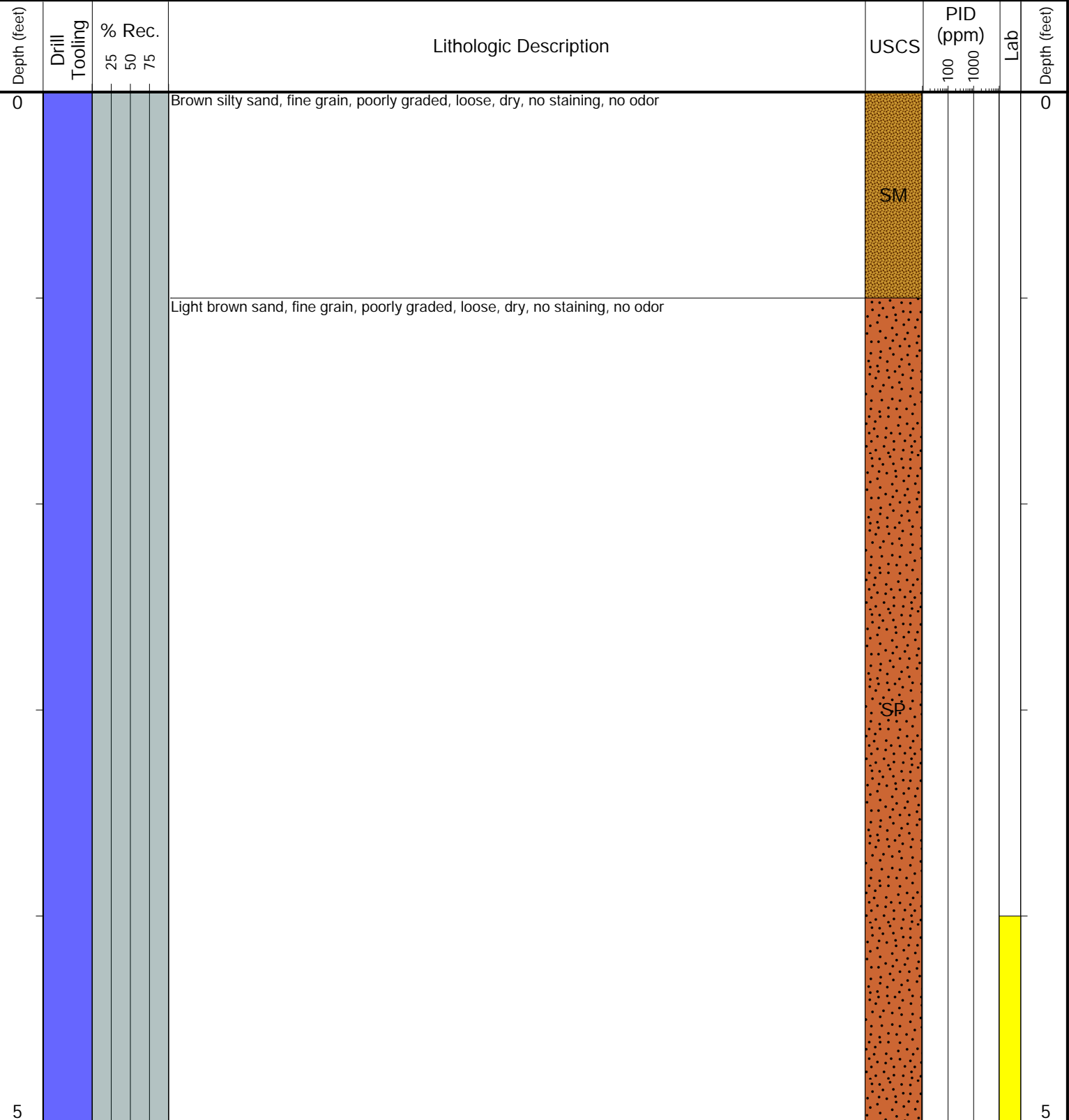
- Geotechnical Lab
- Analytical Chemistry Lab
- Geotechnical & Analytical Chemistry Lab



CLIENT: Noble
LOGGED BY: Nelson Davis
PROJECT MANAGER: Allan Engelhardt
DRILLING CONTRACTOR: Tasman
DRILLING EQUIPMENT: Geoprobe
DRILL BIT SIZE (INCHES): 3.25
DATE STARTED - COMPLETED: 08/21/25-08/21/25
TOTAL WELL DEPTH (FT. BGS): 5
DEPTH TO WATER (FT. BGS): Not Encountered ▼

Uhrich 19-29, 1, 14-29
BORING ID: FL-SS-01-R
LOCATION: E of SEP01-DL-R
LATITUDE (NAD 83): 40.449935
LONGITUDE (NAD 83): -104.580808
GROUND ELEVATION (FT. AMSL): Not Measured
ABANDONMENT METHOD: Native Material

4725 Independence St.
Wheat Ridge, CO 80033



Drilling / Sample Method:

- Macro-Core
- Hand Auger
- Expendable Well Tip
- HydroPunch Groundwater Sampler

Laboratory Sample Types:

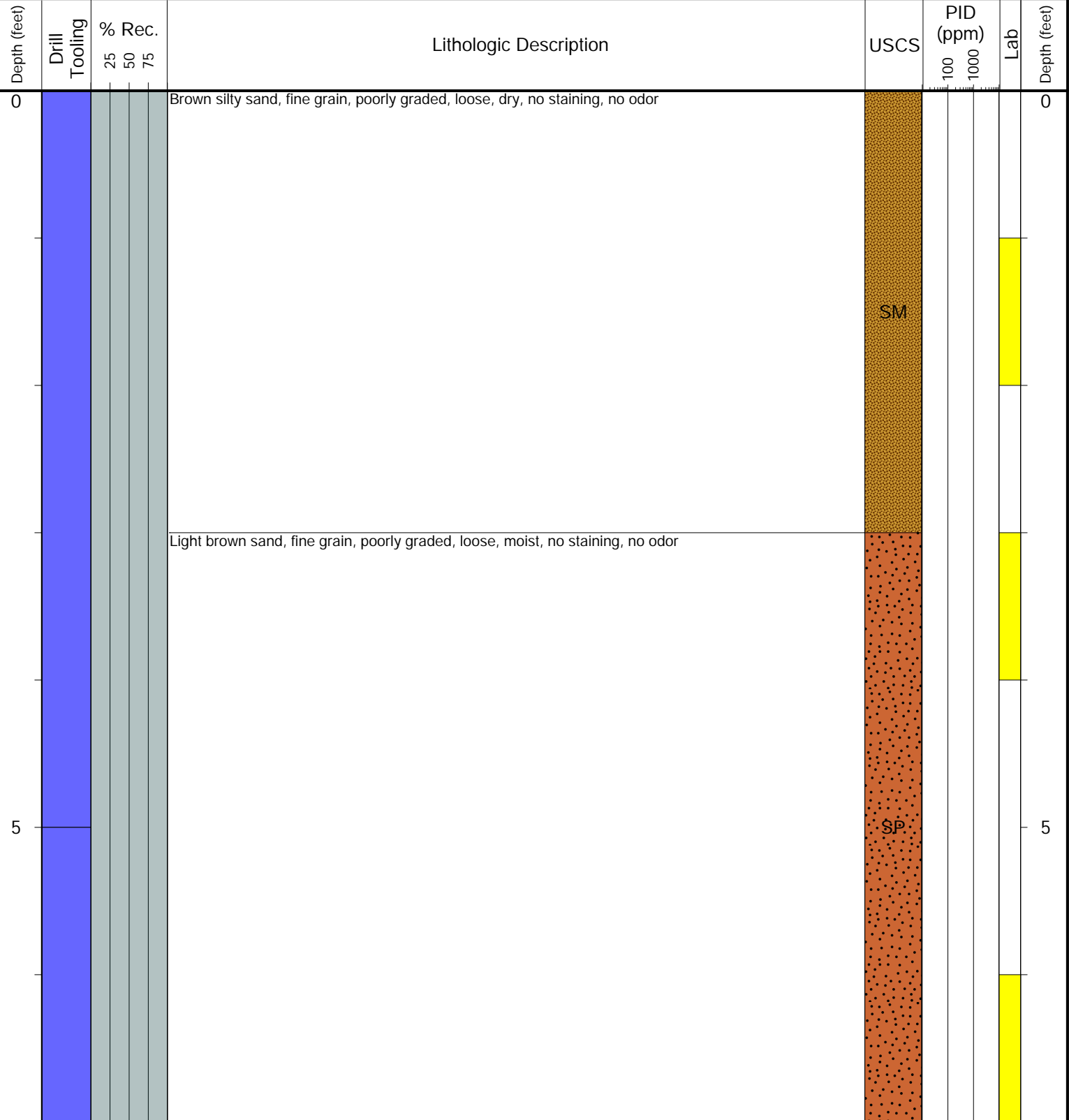
- Geotechnical Lab
- Analytical Chemistry Lab
- Geotechnical & Analytical Chemistry Lab



CLIENT: Noble
LOGGED BY: Nelson Davis
PROJECT MANAGER: Allan Engelhardt
DRILLING CONTRACTOR: Tasman
DRILLING EQUIPMENT: Geoprobe
DRILL BIT SIZE (INCHES): 3.25
DATE STARTED - COMPLETED: 08/21/25-08/21/25
TOTAL WELL DEPTH (FT. BGS): 7
DEPTH TO WATER (FT. BGS): Not Encountered ▼

Uhrich 19-29, 1, 14-29
BORING ID: BKG01
LOCATION: Northern most BKG
LATITUDE (NAD 83): 40.450418
LONGITUDE (NAD 83): -104.580376
GROUND ELEVATION (FT. AMSL): Not Measured
ABANDONMENT METHOD: Native Material

4725 Independence St.
 Wheat Ridge, CO 80033



Drilling / Sample Method:

- Macro-Core
- Hand Auger
- Expendable Well Tip
- HydroPunch Groundwater Sampler

Laboratory Sample Types:

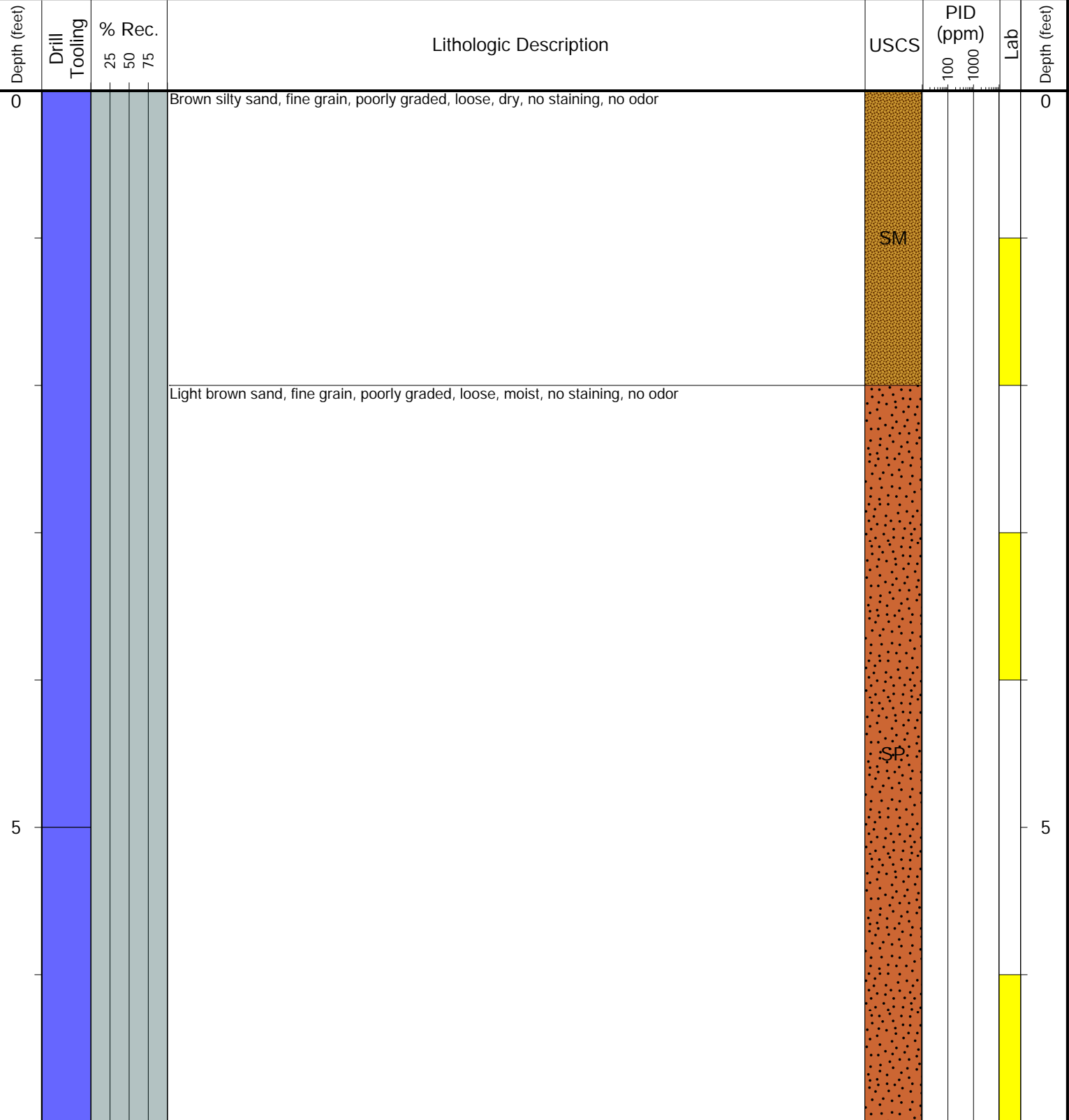
- Geotechnical Lab
- Analytical Chemistry Lab
- Geotechnical & Analytical Chemistry Lab



CLIENT: Noble
LOGGED BY: Nelson Davis
PROJECT MANAGER: Allan Engelhardt
DRILLING CONTRACTOR: Tasman
DRILLING EQUIPMENT: Geoprobe
DRILL BIT SIZE (INCHES): 3.25
DATE STARTED - COMPLETED: 08/21/25-08/21/25
TOTAL WELL DEPTH (FT. BGS): 7
DEPTH TO WATER (FT. BGS): Not Encountered ▼

Uhrich 19-29, 1, 14-29
BORING ID: BKG02
LOCATION: S of BKG01
LATITUDE (NAD 83): 40.450321
LONGITUDE (NAD 83): -104.580451
GROUND ELEVATION (FT. AMSL): Not Measured
ABANDONMENT METHOD: Native Material

4725 Independence St.
Wheat Ridge, CO 80033



Drilling / Sample Method:

- Macro-Core
- Hand Auger
- Expendable Well Tip
- HydroPunch Groundwater Sampler

Laboratory Sample Types:

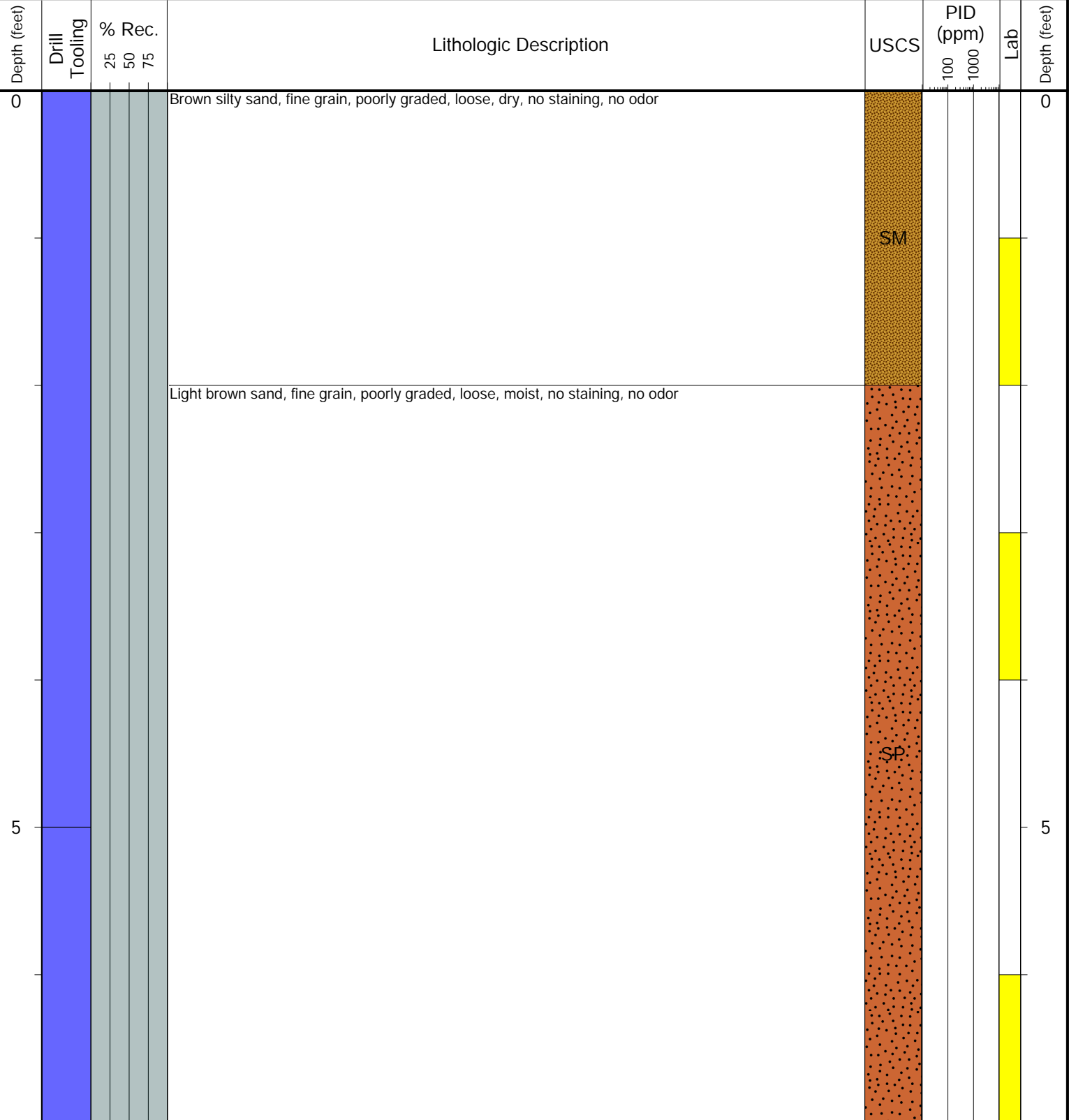
- Geotechnical Lab
- Analytical Chemistry Lab
- Geotechnical & Analytical Chemistry Lab



CLIENT: Noble
LOGGED BY: Nelson Davis
PROJECT MANAGER: Allan Engelhardt
DRILLING CONTRACTOR: Tasman
DRILLING EQUIPMENT: Geoprobe
DRILL BIT SIZE (INCHES): 3.25
DATE STARTED - COMPLETED: 08/21/25-08/21/25
TOTAL WELL DEPTH (FT. BGS): 7
DEPTH TO WATER (FT. BGS): Not Encountered ▼

Uhrich 19-29, 1, 14-29
BORING ID: BKG03
LOCATION: W of BKG02
LATITUDE (NAD 83): 40.450394
LONGITUDE (NAD 83): -104.580549
GROUND ELEVATION (FT. AMSL): Not Measured
ABANDONMENT METHOD: Native Material

4725 Independence St.
Wheat Ridge, CO 80033



Drilling / Sample Method:

- Macro-Core
- Hand Auger
- Expendable Well Tip
- HydroPunch Groundwater Sampler

Laboratory Sample Types:

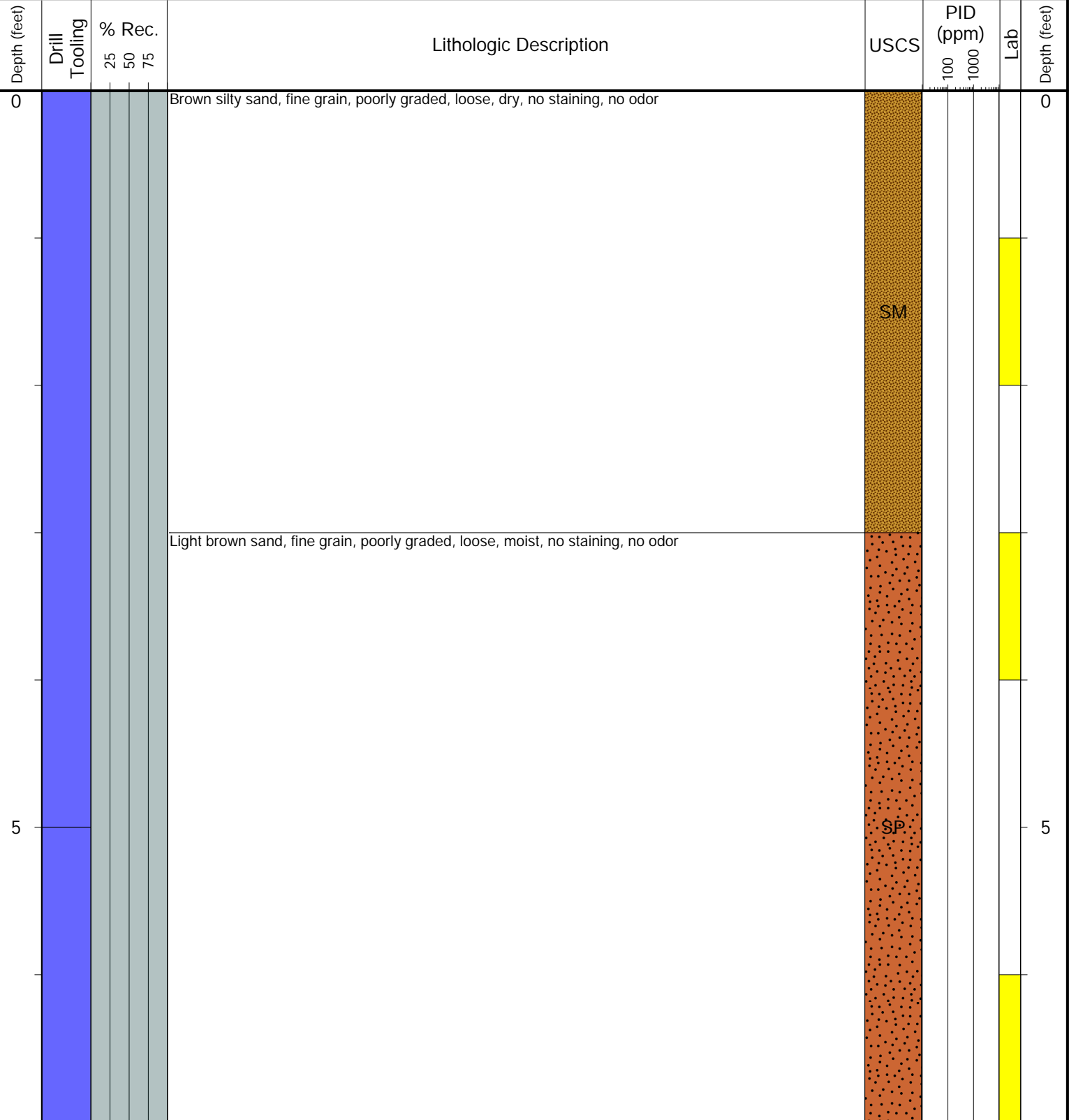
- Geotechnical Lab
- Analytical Chemistry Lab
- Geotechnical & Analytical Chemistry Lab



CLIENT: Noble
LOGGED BY: Nelson Davis
PROJECT MANAGER: Allan Engelhardt
DRILLING CONTRACTOR: Tasman
DRILLING EQUIPMENT: Geoprobe
DRILL BIT SIZE (INCHES): 3.25
DATE STARTED - COMPLETED: 08/21/25-08/21/25
TOTAL WELL DEPTH (FT. BGS): 7
DEPTH TO WATER (FT. BGS): Not Encountered ▼

Uhrich 19-29, 1, 14-29
BORING ID: BKG04
LOCATION: W of BKG03
LATITUDE (NAD 83): 40.450456
LONGITUDE (NAD 83): -104.580674
GROUND ELEVATION (FT. AMSL): Not Measured
ABANDONMENT METHOD: Native Material

4725 Independence St.
 Wheat Ridge, CO 80033



Drilling / Sample Method:

- Macro-Core
- Hand Auger
- Expendable Well Tip
- HydroPunch Groundwater Sampler

Laboratory Sample Types:

- Geotechnical Lab
- Analytical Chemistry Lab
- Geotechnical & Analytical Chemistry Lab