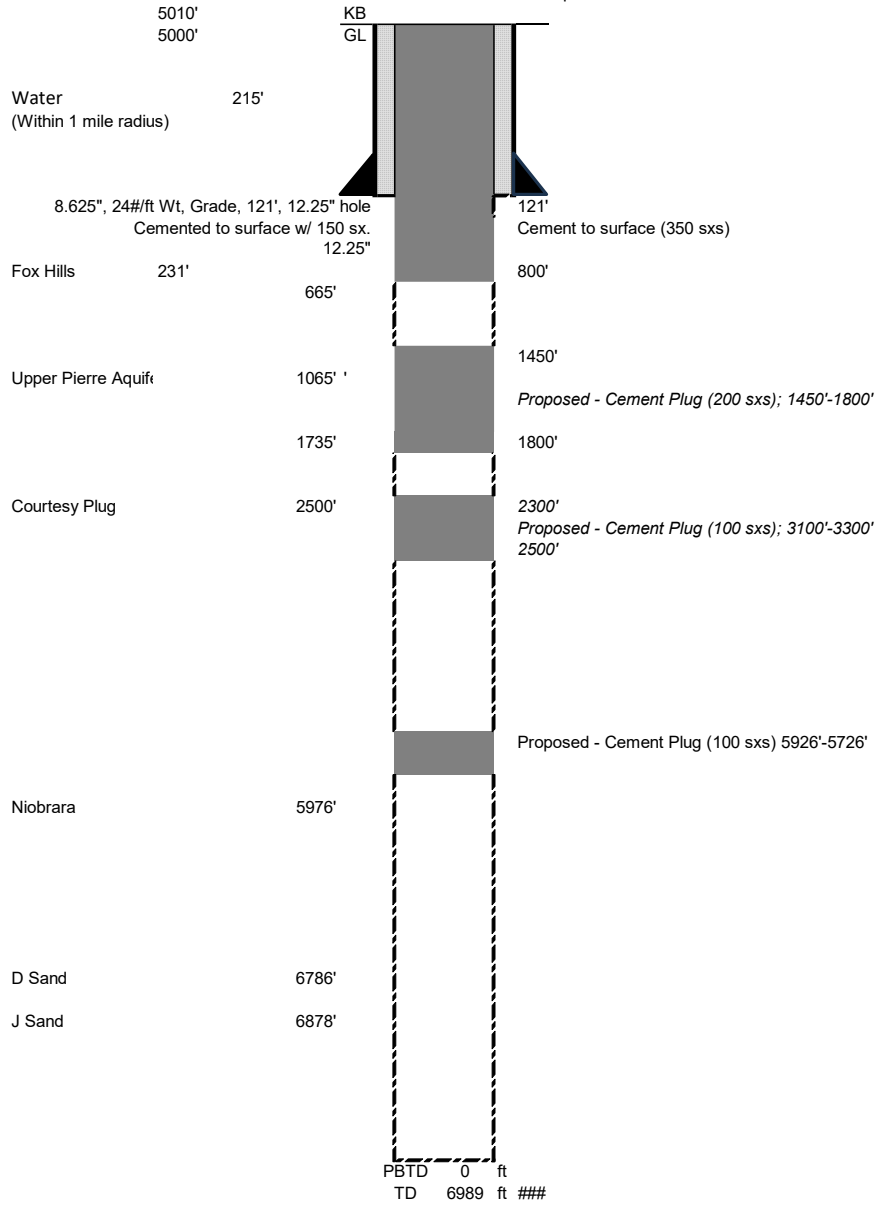


Nelson 1 PROPOSED WBD
660 FSL660 FEL SESE 26 10N 59W 6
Lat 40.803384 Long -103.938739 (from footages)
Weld County, Colorado
API #05-123-05747

Spud date 9/27/1959



Well Name		Nelson 1 PROPOSED WBD		
Legal	660	FSL	660	FEL
Lat/Long	40.803384	-103.938739		
SESE	26	10N	59W	6
API No.	05-123-05747			
Spud Date	9/27/1959			
KB	5010'			
GL	5000'			
Surface plug				
Fluid in hole	Heavy drilling mud			
Shoe plug				0'
Surface Csg	8.625"	24#/ft Wt	Grade	121'
Surface Cement	Cemented to surface w/ 150 sx.			
Surf Hole Size	12.25"			
Production Csg	NA			
Production Cement	NA			
Hole size	7.875			
PBTD	NA			
TD	6989		10/6/1959	
Water	215'	1 mile radius		
Formations:	As found in well:			
	Fox Hills		231'	
	Upper Pierre Aquifer		1065'	
	Niobrara		5976'	
	Fort Hays			
	Greenhorn			
	D Sand		6786'	
	J Sand		6878'	
Production Csg	0	0	0	0
Production Cement	0			
Hole size	0			
PBTD	0			
TD	0		1/0/1900	