

REMEDIAL EXCAVATION REPORT
SPOMER-65N66W 32SESE TANK BATTERY

ECMC SPILL TRACKING # 489218
ECMC REMEDIATION # 30722

Prepared for:

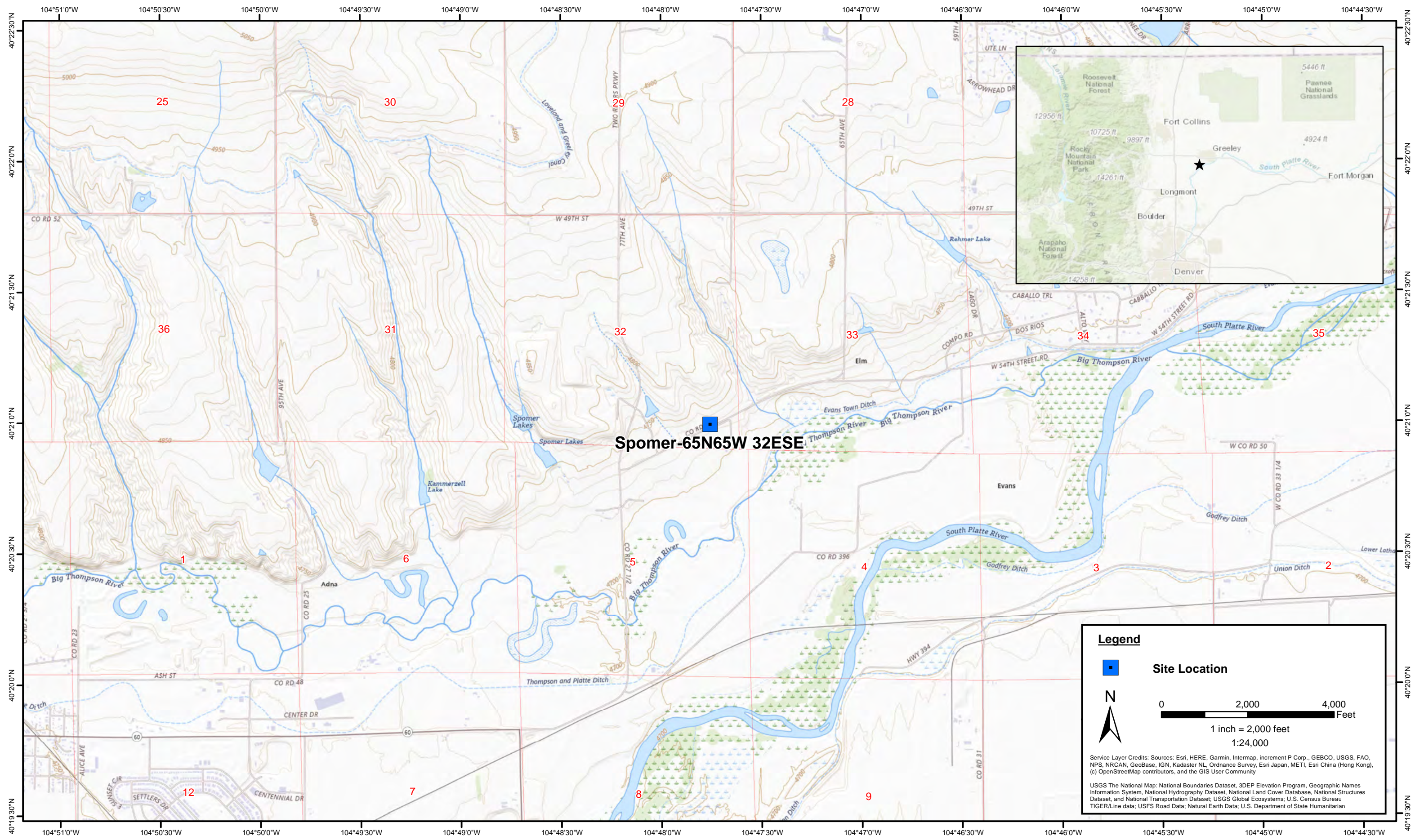


1099 18th Street
Suite 1500
Denver, CO 80202

Prepared by:



4725 Independence Street
Wheat Ridge, CO 80033



DATE: January 2025

DESIGNED BY: J. Whritenour

DRAWN BY: J. Woffinden

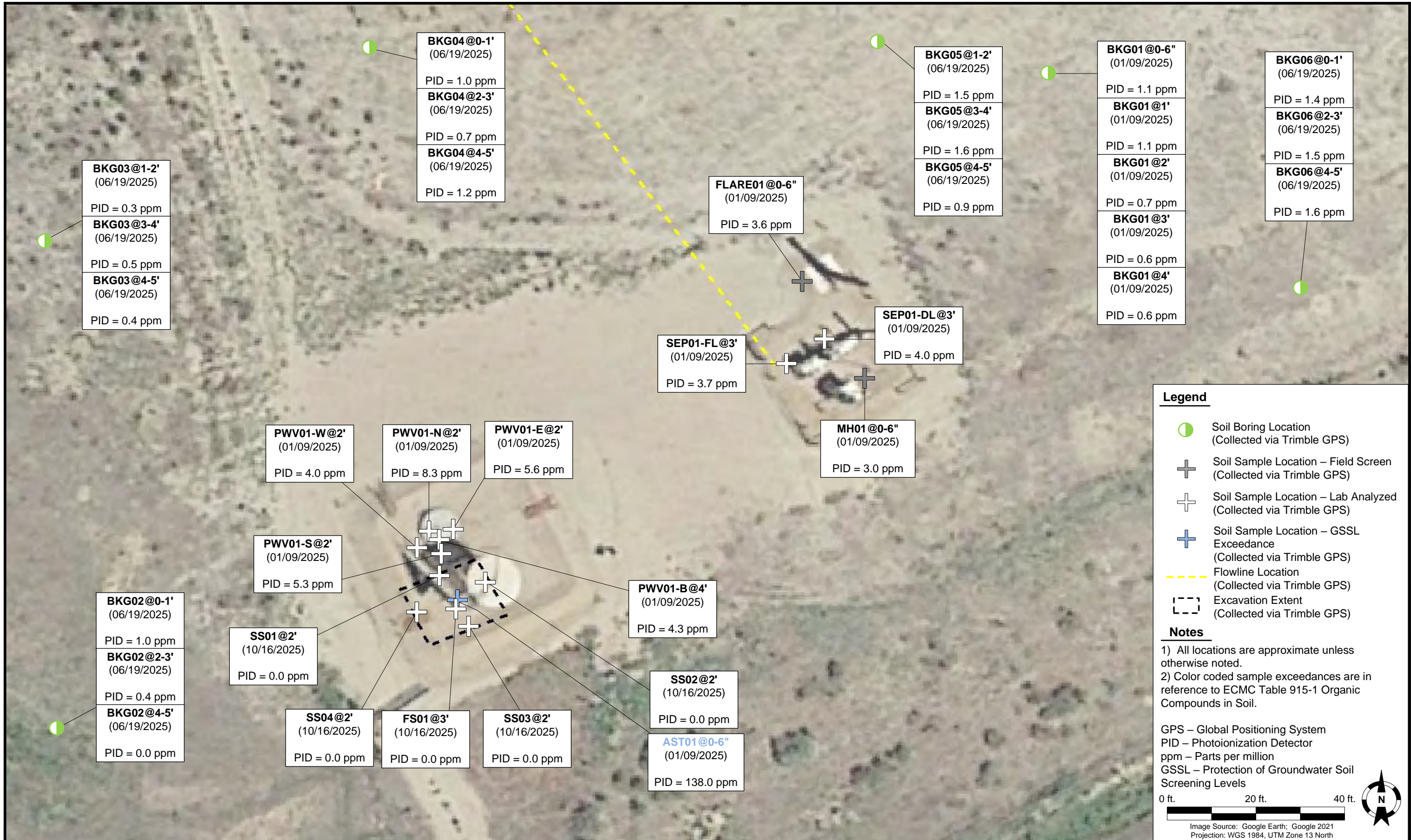


Tasman, Inc.
4725 Independence Street
Wheat Ridge, CO 80033

Noble Energy, Inc. – 100322 – DJ Basin
Spomer-65N66W 32ESE
SESE, Section 32, Township 5 North, Range 66 West
Weld County, Colorado

Site Location Map

Figure
1



DATE: November 11, 2025

DESIGNED BY: J. Whritenour

DRAWN BY: M. Such



Noble Energy, Inc. – 100322 – DJ Basin
Spomer-65N66W 32SESE
 SESE, Section 32, Township 5 North, Range 66 West
 Weld County, Colorado

SOIL SAMPLE LOCATION MAP
 (01/09/2025, 06/19/2025, & 10/16/2025)

FIGURE 2

TABLE 1
FIELD DATA SUMMARY TABLE
NOBLE ENERGY, INC. - 100322
SPOMER-65N66W 32SESE, WELD COUNTY, COLORADO
REM # 30722



Sample ID	Sample Date	Depth (ft. bgs)	GPS Data ¹ Latitude/Longitude		PDOP Value	VOC Concentration ² (ppm)
<i>Initial Tank Battery Decommissioning</i>						
MH01@0-6"	01/09/2025	0-0.5	40.350204	-104.795650	0.8	3.0
FLARE01@0-6"	01/09/2025	0-0.5	40.350267	-104.795698	0.9	3.6
AST01@0-6"	01/09/2025	0-0.5	40.350067	-104.795978	0.9	138.0
PWV01-B@4'	01/09/2025	4	40.350105	-104.795995	NC	4.3
PWV01-E@2'	01/09/2025	2	40.350112	-104.795984	NC	5.6
PWV01-N@2'	01/09/2025	2	40.350112	-104.796003	NC	8.3
PWV01-S@2'	01/09/2025	2	40.350097	-104.795993	NC	5.3
PWV01-W@2'	01/09/2025	2	40.350101	-104.796011	NC	4.0
SEP01-DL@3'	01/09/2025	3	40.350229	-104.795681	0.9	4.0
SEP01-FL@3'	01/09/2025	3	40.350213	-104.795713	0.8	3.7
BKG01@0-6"	01/09/2025	0-0.5	40.350392	-104.795504	0.8	1.1
BKG01@1'	01/09/2025	1	40.350392	-104.795504	0.8	1.1
BKG01@2'	01/09/2025	2	40.350392	-104.795504	0.8	0.7
BKG01@3'	01/09/2025	3	40.350392	-104.795504	0.8	0.6
BKG01@4'	01/09/2025	4	40.350392	-104.795504	0.8	0.6
<i>2Q25 Site Investigation</i>						
BKG02@0-1'	06/19/2025	0-1	40.349990	-104.796301	0.8	1.0
BKG02@2-3'	06/19/2025	2-3	40.349990	-104.796301	0.8	0.4
BKG02@4-5	06/19/2025	4-5	40.349990	-104.796301	0.8	0.0
BKG03@1-2'	06/19/2025	1-2	40.350292	-104.796312	0.8	0.3
BKG03@3-4'	06/19/2025	3-4	40.350292	-104.796312	0.8	0.5
BKG03@4-5'	06/19/2025	4-5	40.350292	-104.796312	0.8	0.4
BKG04@0-1'	06/19/2025	0-1	40.350410	-104.796053	0.8	1.0
BKG04@2-3'	06/19/2025	2-3	40.350410	-104.796053	0.8	0.7
BKG04@4-5'	06/19/2025	4-5	40.350410	-104.796053	0.8	1.2
BKG05@1-2'	06/19/2025	1-2	40.350412	-104.795634	0.8	1.5
BKG05@3-4'	06/19/2025	3-4	40.350412	-104.795634	0.8	1.6
BKG05@4-5'	06/19/2025	4-5	40.350412	-104.795634	0.8	0.9
BKG06@0-1'	06/19/2025	0-1	40.350262	-104.795297	0.8	1.4
BKG06@2-3'	06/19/2025	2-3	40.350262	-104.795297	0.8	1.5
BKG06@4-5'	06/19/2025	4-5	40.350262	-104.795297	0.8	1.6
<i>4Q25 Remedial Excavation (AST01)</i>						
FS01@3'	10/16/2025	3	40.350062	-104.795980	0.8	0.0
SS01@2'	10/16/2025	2	40.350083	-104.795994	0.9	0.0
SS02@2'	10/16/2025	2	40.350079	-104.795956	0.9	0.0
SS03@2'	10/16/2025	2	40.350052	-104.795970	0.9	0.0
SS04@2'	10/16/2025	2	40.350060	-104.796012	0.9	0.0

Notes:

1. Global Positioning System (GPS) data is provided in decimal degrees using North American Datum (NAD) 83 UTM Zone 13 North.

2. Volatile organic compound (VOC) concentrations are measured in the field using a photoionization detector (PID).

PDOP = Position Dilution of Precision

ppm = Parts per million

ft. = Feet

bgs = Below ground surface

NC = Not collected

Source material characterization sample, excavated and transported off site for disposal.

Material excavated and transported off site for disposal.

TABLE 2
SUMMARY OF VOLATILE ORGANIC SOIL CHEMISTRY DATA
NOBLE ENERGY, INC. - 100322
SPOMER-65N66W 32SESE, WELD COUNTY, COLORADO
REM # 30722



Sample ID	Sample Date	Depth (ft. bgs)	Benzene (mg/kg)	Toluene (mg/kg)	Ethyl-Benzene (mg/kg)	Xylenes (mg/kg)	1,2,4-Trimethyl-Benzene (mg/kg)	1,3,5-Trimethyl-Benzene (mg/kg)	Naphthalene (mg/kg)	TPH (mg/kg)	TPH GRO (mg/kg)	TPH DRO (mg/kg)	TPH ORO (mg/kg)
ECMC Table 915-1 Limits (Residential SSL)			1.2	490	5.8	58	30	27	2	500	500**		
ECMC Table 915-1 Limits (Protection of Groundwater SSL)			0.0026	0.69	0.78	9.9	0.0081	0.0087	0.0038	500	500**		
<i>Initial Tank Battery Decommissioning</i>													
AST01@0-6"	01/09/2025	0-0.5	<0.0020	0.0098	<0.0050	0.044	0.021	0.015	<0.0038	0.69	0.69	<50	<50
PWV01-B@4'	01/09/2025	4	<0.0020	<0.0050	<0.0050	<0.010	<0.0050	<0.0050	<0.0038	<50	<0.50	<50	<50
PWV01-E@2'	01/09/2025	2	<0.0020	<0.0050	<0.0050	<0.010	<0.0050	<0.0050	<0.0038	<50	<0.50	<50	<50
PWV01-N@2'	01/09/2025	2	<0.0020	<0.0050	<0.0050	<0.010	<0.0050	<0.0050	<0.0038	<50	<0.50	<50	<50
PWV01-S@2'	01/09/2025	2	<0.0020	<0.0050	<0.0050	<0.010	<0.0050	<0.0050	<0.0038	<50	<0.50	<50	<50
PWV01-W@2'	01/09/2025	2	<0.0020	<0.0050	<0.0050	<0.010	<0.0050	<0.0050	<0.0038	<50	<0.50	<50	<50
SEP01-DL@3'	01/09/2025	3	<0.0020	<0.0050	<0.0050	<0.010	<0.0050	<0.0050	<0.0038	<50	<0.50	<50	<50
SEP01-FL@3'	01/09/2025	3	<0.0020	<0.0050	<0.0050	<0.010	<0.0050	<0.0050	<0.0038	<50	<0.50	<50	<50
<i>4Q25 Remedial Excavation (AST01)</i>													
FS01@3'	10/16/2025	3	<0.0010	<0.0021	<0.0021	<0.0021	<0.0021	<0.0021	<0.0021	<6.5	<0.21	<4.3	<6.5
SS01@2'	10/16/2025	2	<0.0011	<0.0022	<0.0022	<0.0022	<0.0022	<0.0022	<0.0022	<6.7	<0.22	<4.5	<6.7
SS02@2'	10/16/2025	2	<0.0011	<0.0022	<0.0022	<0.0022	<0.0022	<0.0022	<0.0021	<6.6	<0.22	<4.4	<6.6
SS03@2'	10/16/2025	2	<0.0010	<0.0021	<0.0021	<0.0021	<0.0021	<0.0021	<0.0020	<6.6	<0.21	<4.4	<6.6
SS04@2'	10/16/2025	2	<0.0011	<0.0021	<0.0021	<0.0021	<0.0021	<0.0021	<0.0020	<6.5	<0.21	<4.3	<6.5

Notes:

- Bold** values exceed the ECMC Table 915-1 limit(s).
- Red & blue highlighted soil analytical values indicate an exceedance of the referenced soil screening level (SSL).
- ** Summation of GRO+DRO+ORO must be less than 500 mg/kg.

ECMC = Energy and Carbon Management Commission

(<) = Analytical result is less than the indicated laboratory reporting limit.

TPH-GRO = Total petroleum hydrocarbons - gasoline range organics

TPH-DRO = Total petroleum hydrocarbons - diesel range organics

TPH-ORO = Total petroleum hydrocarbons - oil range organics

mg/kg = Milligrams per kilogram

ft. = Feet

bgs = Below ground surface

Source material characterization sample, excavated and transported off site for disposal.

Material excavated and transported off site for disposal.

TABLE 3
SUMMARY OF POLYCYCLIC AROMATIC HYDROCARBON SOIL CHEMISTRY DATA
NOBLE ENERGY, INC. - 100322
SPOMER-65N66W 32SESE, WELD COUNTY, COLORADO
REM # 30722



Sample ID	Sample Date	Depth (ft. bgs)	Acenaphthene (mg/kg)	Anthracene (mg/kg)	Benzo (a) Anthracene (mg/kg)	Benzo (a) Pyrene (mg/kg)	Benzo (b) Fluoranthene (mg/kg)	Benzo (k) Fluoranthene (mg/kg)	Chrysene (mg/kg)	Dibenzo (a,h) Anthracene (mg/kg)	Fluoranthene (mg/kg)	Fluorene (mg/kg)	Indeno (1,2,3-cd) Pyrene (mg/kg)	Pyrene (mg/kg)	1-Methyl - Naphthalene (mg/kg)	2-Methyl - Naphthalene (mg/kg)	
ECMC Table 915-1 Limits (Residential SSL)			360	1800	1.1	0.11	1.1	11	110	0.11	240	240	1.1	180	18	24	
ECMC Table 915-1 Limits (Protection of Groundwater SSL)			0.55	5.8	0.011	0.24	0.3	2.9	9	0.096	8.9	0.54	0.98	1.3	0.006	0.019	
<i>Initial Tank Battery Decommissioning</i>																	
AST01@0-6"	01/09/2025	0-0.5	<0.00500	<0.00500	<0.00500	<0.00500	<0.00500	<0.00500	<0.00500	<0.00500	<0.00500	<0.00500	<0.00500	<0.00500	<0.00500	<0.00500	0.0124
PWV01-B@4'	01/09/2025	4	<0.00500	<0.00500	<0.00500	<0.00500	<0.00500	<0.00500	<0.00500	<0.00500	<0.00500	<0.00500	<0.00500	<0.00500	<0.00500	<0.00500	0.00912
PWV01-E@2'	01/09/2025	2	<0.00500	<0.00500	<0.00500	<0.00500	<0.00500	<0.00500	<0.00500	<0.00500	<0.00500	<0.00500	<0.00500	<0.00500	<0.00500	<0.00500	<0.00500
PWV01-N@2'	01/09/2025	2	<0.00500	<0.00500	<0.00500	<0.00500	<0.00500	<0.00500	<0.00500	<0.00500	<0.00500	<0.00500	<0.00500	<0.00500	<0.00500	<0.00500	<0.00500
PWV01-S@2'	01/09/2025	2	<0.00500	<0.00500	<0.00500	<0.00500	<0.00500	<0.00500	<0.00500	<0.00500	<0.00500	<0.00500	<0.00500	<0.00500	<0.00500	<0.00500	<0.00500
PWV01-W@2'	01/09/2025	2	<0.00500	<0.00500	<0.00500	<0.00500	<0.00500	<0.00500	<0.00500	<0.00500	<0.00500	<0.00500	<0.00500	<0.00500	<0.00500	<0.00500	0.00548
SEP01-DL@3'	01/09/2025	3	<0.00500	<0.00500	<0.00500	<0.00500	<0.00500	<0.00500	<0.00500	<0.00500	<0.00500	<0.00500	<0.00500	<0.00500	<0.00500	<0.00500	<0.00500
SEP01-FL@3'	01/09/2025	3	<0.00500	<0.00500	<0.00500	<0.00500	<0.00500	<0.00500	<0.00500	<0.00500	<0.00500	<0.00500	<0.00500	<0.00500	<0.00500	<0.00500	<0.00500
<i>4Q25 Remedial Excavation (AST01)</i>																	
FS01@3'	10/16/2025	3	<0.0042	<0.0042	<0.0052	<0.0042	<0.0042	<0.0042	<0.0042	<0.0042	<0.0042	<0.0042	<0.0042	<0.0042	<0.0042	<0.0042	<0.0042
SS01@2'	10/16/2025	2	<0.0043	<0.0043	<0.0054	<0.0043	<0.0043	<0.0043	<0.0043	<0.0043	<0.0043	<0.0043	<0.0043	<0.0043	<0.0043	<0.0043	<0.0043
SS02@2'	10/16/2025	2	<0.0042	<0.0042	<0.0052	<0.0042	<0.0042	<0.0042	<0.0042	<0.0042	<0.0042	<0.0042	<0.0042	<0.0042	<0.0042	<0.0042	<0.0042
SS03@2'	10/16/2025	2	<0.0041	<0.0041	<0.0051	<0.0041	<0.0041	<0.0041	<0.0041	<0.0041	<0.0041	<0.0041	<0.0041	<0.0041	<0.0041	<0.0041	<0.0041
SS04@2'	10/16/2025	2	<0.0041	<0.0041	<0.0051	<0.0041	<0.0041	<0.0041	<0.0041	<0.0041	<0.0041	<0.0041	<0.0041	<0.0041	<0.0041	<0.0041	<0.0041

Notes:

- 1. Bold** values exceed the ECMC Table 915-1 limit(s).
- Red & blue highlighted soil analytical values indicate an exceedance of the referenced soil screening level (SSL).
- * Indicates laboratory minimum detection limit in excess of SSL.

ECMC = Energy and Carbon Management Commission

(<) = Analytical result is less than the indicated laboratory reporting limit.

mg/kg = Milligrams per kilogram

ft. = Feet

bgs = Below ground surface

NA = Not analyzed

Source material characterization sample, excavated and transported off site for disposal.

Material excavated and transported off site for disposal.

TABLE 4
SUMMARY OF SOIL SUITABILITY FOR RECLAMATION
NOBLE ENERGY, INC. - 100322
SPOMER-65N66W 32SESE, WELD COUNTY, COLORADO
REM # 30722



Sample ID	Sample Date	Depth (ft. bgs)	pH (Standard Units)	EC (mmhos/cm)	SAR (Standard Units)	Boron (mg/L)
ECMC Table 915-1 Soil Suitability Limits			6 - 8.3	<4	<6	2
<i>Initial Tank Battery Decommissioning</i>						
AST01@0-6"	01/09/2025	0-0.5	8.22	0.276	0.0983	<2.00
PWV01-B@4'	01/09/2025	4	8.42	0.229	0.304	<2.00
PWV01-E@2'	01/09/2025	2	8.37	0.176	0.0443	<2.00
PWV01-N@2'	01/09/2025	2	8.38	0.208	0.119	<2.00
PWV01-S@2'	01/09/2025	2	8.46	0.159	0.0296	<2.00
PWV01-W@2'	01/09/2025	2	8.25	0.198	0.0520	<2.00
SEP01-DL@3'	01/09/2025	3	8.27	0.277	0.0851	<2.00
SEP01-FL@3'	01/09/2025	3	8.41	0.239	0.235	<2.00
<i>4Q25 Remedial Excavation (AST01)</i>						
FS01@3'	10/16/2025	3	8.07	0.33	0.259	<0.50
SS01@2'	10/16/2025	2	8.07	0.33	0.139	<0.50
SS02@2'	10/16/2025	2	8.11	0.21	0.0273	<0.50
SS03@2'	10/16/2025	2	8.10	0.20	0.0610	<0.50
SS04@2'	10/16/2025	2	8.12	0.35	0.129	<0.50
<i>Background Soil Sampling</i>						
BKG01@0-6"	01/09/2025	0-0.5	7.96	0.456	0.101	<2.00
BKG01@1'	01/09/2025	1	8.01	0.548	0.242	<2.00
BKG01@2'	01/09/2025	2	8.36	0.454	0.627	<2.00
BKG01@3'	01/09/2025	3	7.78	3.50	0.599	<2.00
BKG01@4'	01/09/2025	4	7.89	3.09	1.07	<2.00
BKG02@0-1'	06/19/2025	0-1	7.24	2.4	0.739	<0.50
BKG02@2-3'	06/19/2025	2-3	8.01	2.7	0.790	<0.50
BKG02@4-5'	06/19/2025	4-5	7.75	1.7	0.857	<0.50
BKG03@1-2'	06/19/2025	1-2	7.63	7.4	2.28	<0.50
BKG03@3-4'	06/19/2025	3-4	6.91	5.3	1.76	<0.50
BKG03@4-5'	06/19/2025	4-5	7.42	6.0	2.35	<0.50
BKG04@0-1'	06/19/2025	0-1	7.10	2.9	0.312	<0.50
BKG04@2-3'	06/19/2025	2-3	7.13	7.1	1.87	<0.50
BKG04@4-5'	06/19/2025	4-5	7.42	6.6	1.98	<0.50
BKG05@1-2'	06/19/2025	1-2	7.59	6.3	1.72	<0.50
BKG05@3-4'	06/19/2025	3-4	7.11	6.5	2.10	<0.50
BKG05@4-5'	06/19/2025	4-5	8.33	7.2	2.30	<0.50
BKG06@0-1'	06/19/2025	0-1	7.24	0.26	0.0894	<0.50
BKG06@2-3'	06/19/2025	2-3	7.52	0.42	0.461	<0.50
BKG06@4-5'	06/19/2025	4-5	7.31	0.64	1.37	<0.50

TABLE 4
SUMMARY OF SOIL SUITABILITY FOR RECLAMATION
NOBLE ENERGY, INC. - 100322
SPOMER-65N66W 32SESE, WELD COUNTY, COLORADO
REM # 30722



Sample ID	Sample Date	Depth (ft. bgs)	pH (Standard Units)	EC (mmhos/cm)	SAR (Standard Units)	Boron (mg/L)
ECMC Table 915-1 Soil Suitability Limits			6 - 8.3	<4	<6	2
Maximum Background Concentration			8.36	-	-	-

Notes:

1. **Bold** faced values exceed the ECMC Table 915-1 limit(s), but are within background concentrations.
2. **Bold** faced values exceed the ECMC Table 915-1 limit(s) and native background concentrations.
3. Brown highlighted soil analytical values indicate a regulatory exceedance.

ECMC = Energy and Carbon Management Commission

(<) = Analytical result is less than the indicated laboratory reporting limit.

mg/L = Milligrams per liter

ft. = Feet

bgs = Below ground surface

EC = Electrical conductivity

SAR = Sodium adsorption ratio

mmhos/cm = Millimhos per centimeter

Source material characterization sample, excavated and transported off site for disposal.

Material excavated and transported off site for disposal.

TABLE 5
SUMMARY OF METALS IN SOIL CHEMISTRY DATA
NOBLE ENERGY, INC. - 100322
SPOMER-65N66W 32SESE, WELD COUNTY, COLORADO
REM # 30722



Sample ID	Sample Date	Depth (ft. bgs)	Arsenic (mg/kg)	Barium (mg/kg)	Cadmium (mg/kg)	Chromium (VI) ⁶ (mg/kg)	Copper (mg/kg)	Lead (mg/kg)	Nickel (mg/kg)	Selenium (mg/kg)	Silver (mg/kg)	Zinc (mg/kg)
ECMC Table 915-1 Limits (Residential SSL)			0.68	15000	71	0.3	3100	400	1500	390	390	23000
ECMC Table 915-1 Limits (Protection of Groundwater SSL)			0.29	82	0.38	0.00067	46	14	26	0.26	0.8	370
<i>Initial Tank Battery Decommissioning</i>												
AST01@0-6'	01/09/2025	0-0.5	5.78	75.5	0.210	<0.30*	6.11	10.1	5.77	0.270	0.0987	26.0
PWV01-B@4'	01/09/2025	4	5.37	54.9	<0.200	<0.30*	4.93	7.80	5.37	0.425	0.109	21.8
PWV01-E@2'	01/09/2025	2	7.90	36.1	<0.200	<0.30*	5.37	10.7	6.43	0.306	0.111	28.5
PWV01-N@2'	01/09/2025	2	6.58	46.2	<0.200	<0.30*	5.14	8.96	5.64	<0.260	0.0997	24.9
PWV01-S@2'	01/09/2025	2	6.77	42.8	<0.200	<0.30*	5.24	9.43	5.90	0.268	0.104	26.0
PWV01-W@2'	01/09/2025	2	6.69	47.8	<0.200	<0.30*	5.55	9.36	6.45	<0.260	0.100	25.6
SEP01-DL@3'	01/09/2025	3	5.93	48.9	<0.200	<0.30*	5.17	9.30	5.76	0.267	0.110	25.7
SEP01-FL@3'	01/09/2025	3	6.90	49.1	0.278	<0.30*	5.69	10.7	6.04	0.283	0.116	27.8
<i>4Q25 Remedial Excavation (AST01)</i>												
FS01@3'	10/16/2025	3	8.6	40.2	0.098	<0.45*	9.7	12.6	10.6	0.33	<0.096	46.8
SS01@2'	10/16/2025	2	6.7	52.1	0.11	<0.45*	8.6	10.2	9.1	0.33	<0.10	38.3
SS02@2'	10/16/2025	2	8.6	48.7	0.11	<0.46*	10.2	12.8	10.9	0.39	<0.10	45.3
SS03@2'	10/16/2025	2	9.5	44.6	0.15	<0.45*	10.8	14.5	11.1	0.60	<0.093	49.4
SS04@2'	10/16/2025	2	8.7	66.1	0.13	<0.44*	10.3	14.5	10.8	0.44	<0.091	48.4
<i>Background Soil Sampling</i>												
BKG01@0-6'	01/09/2025	0-0.5	7.55	45.9	<0.200	<0.30*	6.23	10.6	6.22	<0.260	0.129	26.8
BKG01@1'	01/09/2025	1	8.58	34.4	<0.200	<0.30*	6.46	13.5	7.06	0.267	0.146	30.9
BKG01@2'	01/09/2025	2	22.6	33.4	0.328	<0.30*	8.01	20.1	8.31	0.335	0.204	42.5
BKG01@3'	01/09/2025	3	8.53	15.7	<0.200	<0.30*	5.48	11.6	6.27	<0.260	0.139	30.2
BKG01@4'	01/09/2025	4	10.4	15.1	<0.200	<0.30*	4.98	11.4	6.62	<0.260	0.128	31.4
BKG02@0-1'	06/19/2025	0-1	7.9	265	0.56	<0.62*	28.4	21.8	24.7	3.7	<0.75	115
BKG02@2-3'	06/19/2025	2-3	10.8	130	<0.30	<0.50*	15.8	17.0	16.6	3.3	<0.59	66.1
BKG02@4-5'	06/19/2025	4-5	9.5	81.3	<0.29	<0.50*	17.6	18.5	17.1	3.0	<0.59	74.6
BKG03@1-2'	06/19/2025	1-2	19.8	35.4	<0.31	<0.55*	18.8	25.3	18.7	3.4	<0.62	84.6
BKG03@3-4'	06/19/2025	3-4	6.3	17.8	<0.31	<0.50*	6.2	10.5	14.3	2.5	<0.62	44.5
BKG03@4-5'	06/19/2025	4-5	4.2	15.7	<0.12	<0.47*	6.9	8.4	8.6	1.4	<0.24	40.5
BKG04@0-1'	06/19/2025	0-1	11.6	47.2	<0.29	<0.47*	12.1	22.0	15.2	5.2	<0.58	75.9
BKG04@2-3'	06/19/2025	2-3	9.9	22.6	<0.12	<0.50*	12.5	19.1	14.2	<2.5*	<0.25	65.0
BKG04@4-5'	06/19/2025	4-5	11.1	31.3	<0.32	<0.50*	15.9	18.3	13.9	3.9	<0.65	74.1
BKG05@1-2'	06/19/2025	1-2	7.6	32.2	<0.29	<0.49*	12.1	15.9	15.3	2.4	<0.57	60.3

TABLE 5
SUMMARY OF METALS IN SOIL CHEMISTRY DATA
NOBLE ENERGY, INC. - 100322
SPOMER-65N66W 32SESE, WELD COUNTY, COLORADO
REM # 30722



Sample ID	Sample Date	Depth (ft. bgs)	Arsenic (mg/kg)	Barium (mg/kg)	Cadmium (mg/kg)	Chromium (VI) ⁶ (mg/kg)	Copper (mg/kg)	Lead (mg/kg)	Nickel (mg/kg)	Selenium (mg/kg)	Silver (mg/kg)	Zinc (mg/kg)
ECMC Table 915-1 Limits (Residential SSL)			0.68	15000	71	0.3	3100	400	1500	390	390	23000
ECMC Table 915-1 Limits (Protection of Groundwater SSL)			0.29	82	0.38	0.00067	46	14	26	0.26	0.8	370
BKG05@3-4'	06/19/2025	3-4	6.8	32.1	<0.12	<0.50*	9.2	14.2	11.5	<2.5*	<0.25	50.9
BKG05@4-5'	06/19/2025	4-5	9.8	26.0	<0.31	<0.51*	15.9	15.8	14.1	<3.1*	<0.63	66.6
BKG06@0-1'	06/19/2025	0-1	9.6	125	<0.37	<0.59*	13.3	15.5	16.0	<7.4*	<0.74	66.4
BKG06@2-3'	06/19/2025	2-3	6.5	53.2	<0.29	<0.48*	11.9	12.5	11.6	<2.9*	<0.57	52.9
BKG06@4-5'	06/19/2025	4-5	8.5	54.9	<0.30	<0.49*	11.3	13.7	12.6	3.0	<0.59	56.6
1.25x Maximum Background Concentration			28.3	-	-	-	-	31.6	-	6.5	-	-

Notes:

1. **Bold** faced values exceed the ECMC Table 915-1 limit(s), but are within 1.25x background concentrations.
2. **Red** faced values exceed the ECMC Table 915-1 limit(s) and native background concentrations.
3. Red & blue highlighted soil analytical values indicate an exceedance of the referenced soil screening level (SSL).
4. Reporting limit used for 1.25 multiplier when all background results for a specific metal are non-detect.
5. * Indicates laboratory minimum detection limit in excess of SSL.
6. Compound falls within the ECMC Table 915-1 footnote 9.

ECMC = Energy & Carbon Management Commission

(<) = Analytical result is less than the indicated laboratory reporting limit.

mg/kg = Milligrams per kilogram

ft. = Feet

bgs = Below ground surface

Source material characterization sample, excavated and transported off site for disposal.

Material excavated and transported off site for disposal.



TANK BATTERY DECOMMISSIONING FORM

CLIENT: Noble Energy		SITE NAME: Spomer-65N66W 32SESE					DATE: 10/16/2025	REM. PROJECT #: 30722	WEATHER: sunny 70s	
SITE DIRECTIONS: .3 miles east of 27.5 and 378, Take a left							JOB#: 8676			
LEGALS AND LAT/LONG: 40.350067, -104.795978							TASMAN PERSONNEL: Tim Barton			
SOIL TYPES: Poorly Graded Sand - SP							SURFACE GRADIENT: South			
SOIL SAMPLING							FACILITY INFRASTRUCTURE			
Date/Time	Soil Sample ID	PID (ppm)	Visual	Olfactory	Photo?	Screen or Lab Sample?	EQUIPMENT	Quantity		
							Above Ground Storage Tank (AST)			
10-16-2025 08:52	FS01@3'	0.0	No Staining	No Odor	Yes	Lab	Buried or Partially Buried Vessel			
10-16-2025 08:58	SS01@2'	0.0	No Staining	No Odor	Yes	Lab	Separator			
10-16-2025 09:07	SS02@2'	0.0	No Staining	No Odor	Yes	Lab	Emission Control Device (ECD)			
10-16-2025 09:09	SS03@2'	0.0	No Staining	No Odor	Yes	Lab	Dump Line			
10-16-2025 09:15	SS04@2'	0.0	No Staining	No Odor	Yes	Lab	Wellhead			
							Flowline			
							Other:			
							Soil Loads Removed			
							IMPACTED SOIL IDENTIFIED?			
							ESTIMATED VOLUME OF IMPACTS:			
							Date	Number	CY	
							10/16/2025	2	20	
							Total Removed	2	20	
							Disposal Facility: WM - Buffalo Ridge			
							Groundwater Recovery			
							DATE GW ENCOUNTERED:		DEPTH:	
							GROUNDWATER IN CONTACT WITH IMPACTED SOIL?			
							LNAPL OR SHEEN OBSERVED ON GW?			
GROUNDWATER SAMPLING							Date	BBLS		
Date/Time	Groundwater Sample ID	Depth Collected	Turbid?	Sheen?	Odor?	Photo?				
							Total Removed	0		
							Disposal Facility:			

Chevron Rockies Business Unit

Field Qualitative Criteria for ECMC Reporting Associated with the Discovery of Potentially Impacted Material

If answered **Yes** to any of the questions listed below, this may suggest the presence of potentially impacted materials as outlined in ECMC Rule 912. Out of an abundance of caution, a “Yes” response will be reported to the ECMC within 24 hours after discovery, regardless of laboratory results. **Immediately notify the RBU Remediation Team.** Include a copy of this Field Qualitative Spill Criteria Checklist in the field Report.

Please answer the following questions when on-site:

1. Is there visible petroleum hydrocarbon staining in the soil? No
2. Does the soil sample from the stained area have a petroleum odor? No
3. Is there a petroleum hydrocarbon sheen on the nearby surface water? No
4. Does there appear to be a sheen of the surface of accumulated groundwater or seeps within the excavation indicative of petroleum? No
5. Is stained soil in contact with groundwater? No

Please Include relevant photos of the site conditions for items 1-5.

Location name: Spomer-65N66W 32SESE

Please Circle Facility Type: Production Facility



Date: 10/16/2025

GENERAL OBSERVATION FORM

Site Area/AOC: Spomer-65N66W 32SESE Client: Noble Energy

Daily Forecast/Weather: sunny 70s Personnel: Tim Barton

Task/Location Description: Excavate failed sample location of AST 15x15x3

Time	Description
07:45	Arrived on site, gate was chained open, completed JSA
08:08	Marked extent of excavation. Excavation is within 10ft of a barbed wire fence, should not be an issue.
09:33	Sampled and marked points
10:15	Debriefed with the construction crew, departed site.
	20 CY of soil removed
	Soil sample ID's on 'Tank Battery Decommissioning Form' updated to reflect samples ID's that were submitted on the laboratory COC. Text updated on 'General Observation Form' for reading clarity.
	-L. Blanchard 11/17/2025

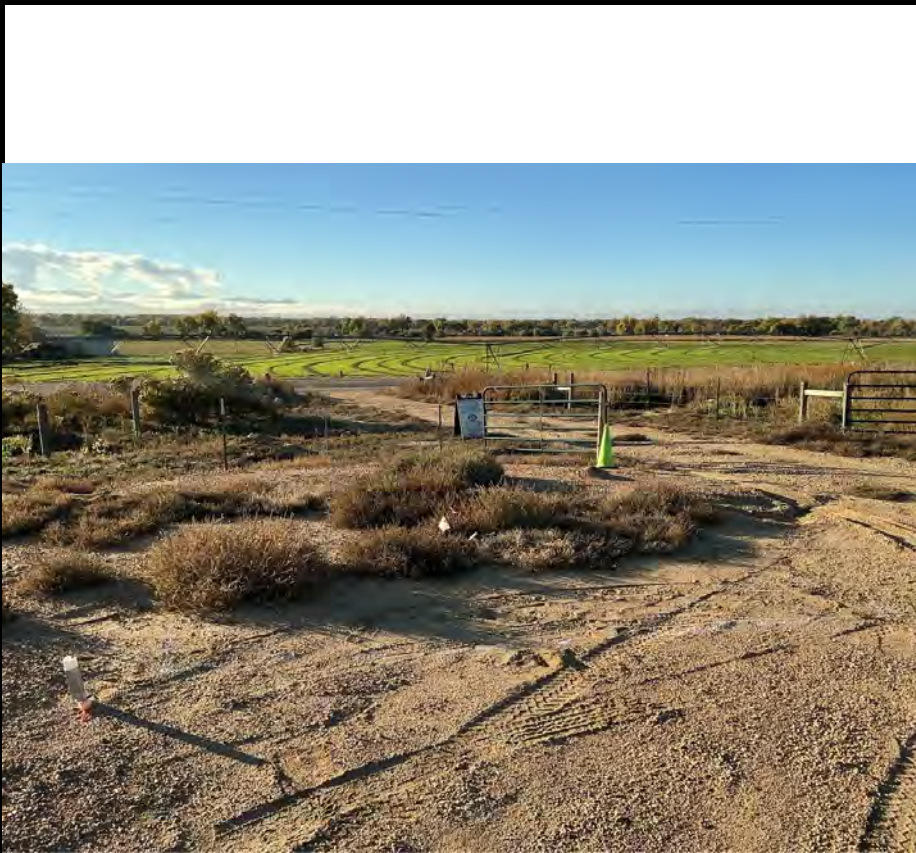
Need a photo log?



Need another General Observation Form?



Photographic Log



Equipment ID:		Equipment Type:	
Material:	Volume:	Contents:	
Notes/Conditions: Marked excavation extent Facing SW			

Equipment ID:		Equipment Type:	
Material:	Volume:	Contents:	
Notes/Conditions: Facing W Distance from extent to barber wire fence. About 8'			



Photographic Log



Equipment ID:		Equipment Type:	
Material:	Volume:	Contents:	
Notes/Conditions: Facing SW A. FS01@3' B. SS04@2' C. SS03@2'			

Equipment ID:		Equipment Type:	
Material:	Volume:	Contents:	
Notes/Conditions: Facing NE A. SS01@2' B. SS02@2'			



Photographic Log



Equipment ID:		Equipment Type:		Equipment ID:		Equipment Type:	
Material:	Volume:	Contents:		Material:	Volume:	Contents:	
Notes/Conditions: Facing E Lithology 0-3' Tan, Poorly graded sand with trace gravel, fine grain, dry, no O/S SP				Notes/Conditions:			