

# Form 19 Data Package

State 1D-16H & 1G-16H  
Remediation #: 41455



Prepared for:  
Crestone Peak Resources Operating LLC -  
10633

November 17, 2025

SENE Sec 16 T3N R68W

Facility ID: Not applicable

API #: 123-36853

# Tables

**Table 1**  
Soil Sample Locations  
Crestone Peak Resources Operating LLC - 10633  
State 1D-16H & 1G-16H  
Remediation Project #41455

Sample ID	Date	Depth	PID (ppm)	Latitude	Longitude	Accuracy Value (m)	Photo (Y/N)	Lab (Y/N)
1D-16HFL-B1@4	11/17/2025	4	20	40.228874	-105.000271	0.31	Yes	Yes
1D-16HWH-W1@4	11/17/2025	4	7	40.22888	-105.000256	0.41	Yes	No
1D-16HWH-S1@4	11/17/2025	4	59	40.228863	-105.000259	0.45	Yes	Yes
1D-16HWH-E1@4	11/17/2025	4	142	40.228876	-105.000253	0.39	Yes	Yes
1D-16HWH-N1@4	11/17/2025	4	3	40.228894	-105.000272	0.43	Yes	No
1D-16HWH-B1@5	11/17/2025	5	59	40.228891	-105.000264	0.61	Yes	Yes
1G-16HWH-B1@5	11/17/2025	5	12	40.228796	-105.000255	0.34	Yes	Yes
1G-16HWH-N1@4	11/17/2025	4	5	40.228812	-105.000252	0.35	Yes	No
1G-16HWH-E1@4	11/17/2025	4	3	40.228801	-105.000249	0.39	Yes	No
1G-16HWH-S1@4	11/17/2025	4	1	40.228791	-105.000259	0.33	Yes	No
1G-16HWH-W1@4	11/17/2025	4	1	40.228795	-105.00027	0.38	Yes	No
1G-16HFL-B1@4	11/17/2025	4	0	40.228801	-105.000268	0.28	Yes	Yes
SP-CS1@5	11/17/2025	5	1	40.228842	-105.000577	0.29	Yes	Yes

**Notes**

PID photoionization detector  
ppm parts per million

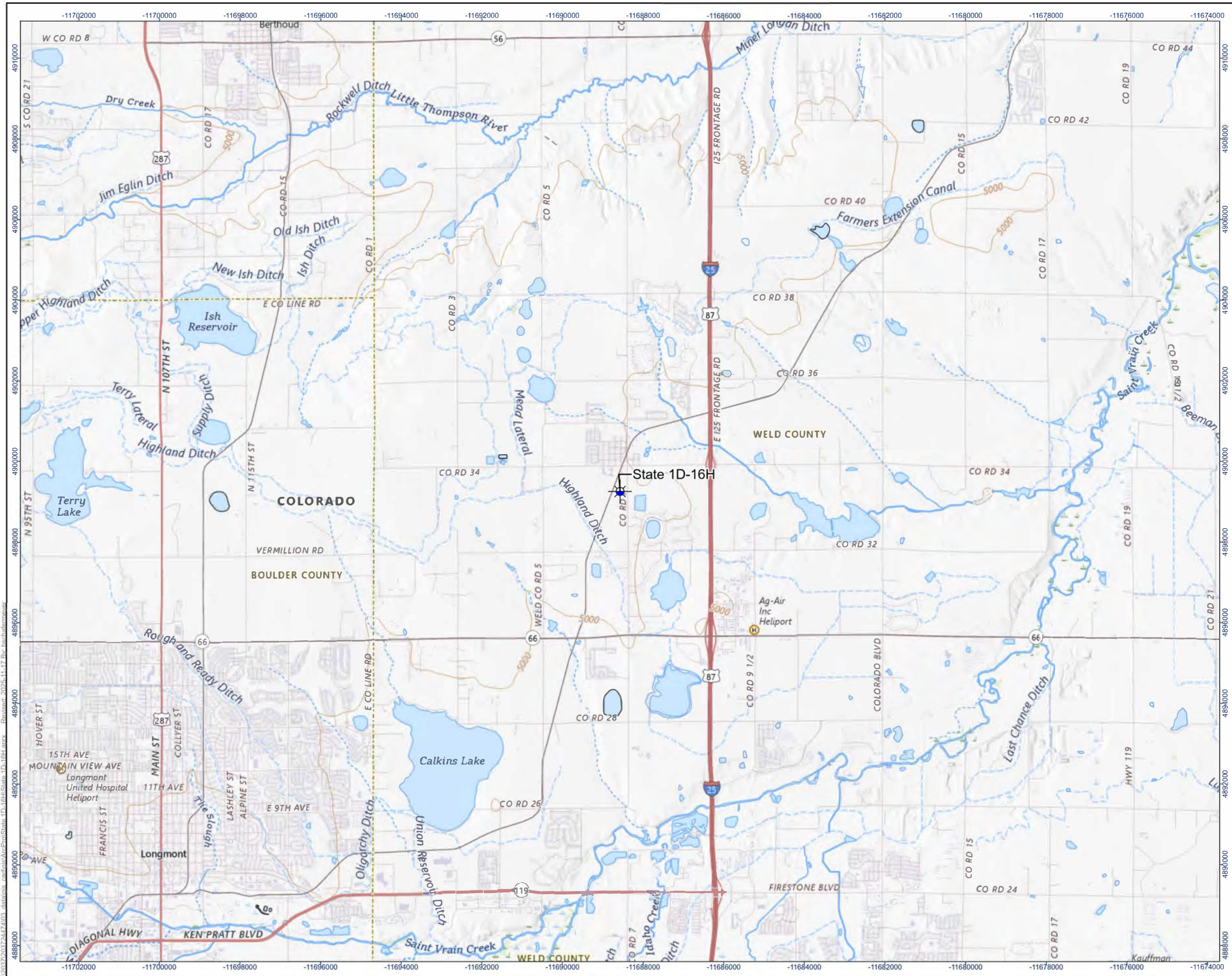
**Table 2**  
**Soil Sample Analytical Results**  
**Creastone Peak Resources Operating LLC - 10633**  
**State 1D-16H, 1G-16H**  
**Remediation Project # 41455**

Constituent of Concern	ECMC Table 915-1 RSSL's	ECMC Table 915-1 GWSSL's	Results						
			1D-16HWH-B1@5	1D-16HWH-E1@4	1D-16HWH-S1@4	1D-16HFL-B1@4	1G-16HWH-B1@5	1G-16HFL-B1@4	SP-CS1@5
Sample Name	--	--	1D-16HWH-B1@5	1D-16HWH-E1@4	1D-16HWH-S1@4	1D-16HFL-B1@4	1G-16HWH-B1@5	1G-16HFL-B1@4	SP-CS1@5
Date	--	--	11/17/2025	11/17/2025	11/17/2025	11/17/2025	11/17/2025	11/17/2025	11/17/2025
PID (ppm)	--	--	59	142	59	20	12	0	1
Depth (feet)	--	--	5	4	4	4	5	4	5
<b>TPH (mg/kg)</b>									
TPH - GRO	--	--	Pending	Pending	Pending	Pending	Pending	Pending	Pending
TPH - DRO	--	--	Pending	Pending	Pending	Pending	Pending	Pending	Pending
TPH - ORO	--	--	Pending	Pending	Pending	Pending	Pending	Pending	Pending
TPH - Total	500	--	Pending	Pending	Pending	Pending	Pending	Pending	Pending
<b>Soil Suitability for Reclamation</b>									
EC (mmhos/cm)	4	--	Pending	Pending	Pending	Pending	Pending	Pending	Pending
SAR (ratio)	6	--	Pending	Pending	Pending	Pending	Pending	Pending	Pending
pH (units)	6-8.3	--	Pending	Pending	Pending	Pending	Pending	Pending	Pending
boron (mg/L)	2	--	Pending	Pending	Pending	Pending	Pending	Pending	Pending
<b>Organic Compounds in Soils (mg/kg)</b>									
benzene	1.2	0.0026	Pending	Pending	Pending	Pending	Pending	Pending	Pending
toluene	490	0.69	Pending	Pending	Pending	Pending	Pending	Pending	Pending
ethylbenzene	5.8	0.78	Pending	Pending	Pending	Pending	Pending	Pending	Pending
total xylenes	58	9.9	Pending	Pending	Pending	Pending	Pending	Pending	Pending
1,2,4-trimethylbenzene	30	0.0081	Pending	Pending	Pending	Pending	Pending	Pending	Pending
1,3,5-trimethylbenzene	27	0.0087	Pending	Pending	Pending	Pending	Pending	Pending	Pending
naphthalene	2	0.0038	Pending	Pending	Pending	Pending	Pending	Pending	Pending
acenaphthene	360	0.55	Pending	Pending	Pending	Pending	Pending	Pending	Pending
anthracene	1800	5.8	Pending	Pending	Pending	Pending	Pending	Pending	Pending
benz(a)anthracene	1.1	0.011	Pending	Pending	Pending	Pending	Pending	Pending	Pending
benzo(a)pyrene	0.11	0.24	Pending	Pending	Pending	Pending	Pending	Pending	Pending
benzo(b)fluoranthene	1.1	0.3	Pending	Pending	Pending	Pending	Pending	Pending	Pending
benzo(k)fluoranthene	11	2.9	Pending	Pending	Pending	Pending	Pending	Pending	Pending
chrysene	110	9	Pending	Pending	Pending	Pending	Pending	Pending	Pending
dibenz(a,h)anthracene	0.11	0.096	Pending	Pending	Pending	Pending	Pending	Pending	Pending
fluoranthene	240	8.9	Pending	Pending	Pending	Pending	Pending	Pending	Pending
fluorene	240	0.54	Pending	Pending	Pending	Pending	Pending	Pending	Pending
indeno(1,2,3-cd)pyrene	1.1	0.98	Pending	Pending	Pending	Pending	Pending	Pending	Pending
pyrene	180	1.3	Pending	Pending	Pending	Pending	Pending	Pending	Pending
1-methylnaphthalene	18	0.006	Pending	Pending	Pending	Pending	Pending	Pending	Pending
2-methylnaphthalene	24	0.019	Pending	Pending	Pending	Pending	Pending	Pending	Pending
<b>Metals in Soils (mg/kg)</b>									
arsenic	0.68	0.29	Pending	Pending	Pending	Pending	Pending	Pending	Pending
barium	15000	82	Pending	Pending	Pending	Pending	Pending	Pending	Pending
cadmium	71	0.38	Pending	Pending	Pending	Pending	Pending	Pending	Pending
chromium (VI)	0.3	0.00067	Pending	Pending	Pending	Pending	Pending	Pending	Pending
copper	3100	46	Pending	Pending	Pending	Pending	Pending	Pending	Pending
lead	400	14	Pending	Pending	Pending	Pending	Pending	Pending	Pending
nickel	1500	26	Pending	Pending	Pending	Pending	Pending	Pending	Pending
selenium	390	0.26	Pending	Pending	Pending	Pending	Pending	Pending	Pending
silver	390	0.8	Pending	Pending	Pending	Pending	Pending	Pending	Pending
zinc	23000	370	Pending	Pending	Pending	Pending	Pending	Pending	Pending

**Notes**

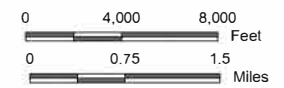
ECMC	Colorado Energy and Carbon Management Commission
RSSL	Residential Soil Screening Level
GWSSL	Protection of Groundwater Soil Screening Level
NA	not measured / not applicable
ppm	parts per million
TPH	total petroleum hydrocarbons
mg/kg	milligrams per kilogram
GRO	gasoline range organics
DRO	diesel range organics
ORO	oil range organics
EC	electrical conductivity
mmhos/cm	millimhos per centimeter
SAR	sodium adsorption ratio
mg/L	milligrams per liter
<	less than laboratory reporting limit
<b>bold</b>	result exceeds the applicable standard (after comparing to background, where applicable)
<b>bold</b>	result exceeds the applicable standard (after comparing to background, where applicable)
	reported detection limit is higher than standard

## Figures



Legend

★ Wellhead Location



(At original document size of 11x17) 1:96,000

- Notes**
1. Coordinate System: WGS 1984 Web Mercator Auxiliary Sphere
  2. Background: USGS 7.5 Minute Quadrangle



**Project Location**  
 NENE SEC 16 T3N R68W  
 WELD COUNTY, COLORADO

Drawn by BS on 11/17/2025  
 Reviewed by CR on 11/17/2025  
 203724474

**Client/Project**  
 CRESTONE PEAK RESOURCES OPERATING LLC (10633)  
 State 1D-16H & 1G-16H  
 (Remediation #41455)

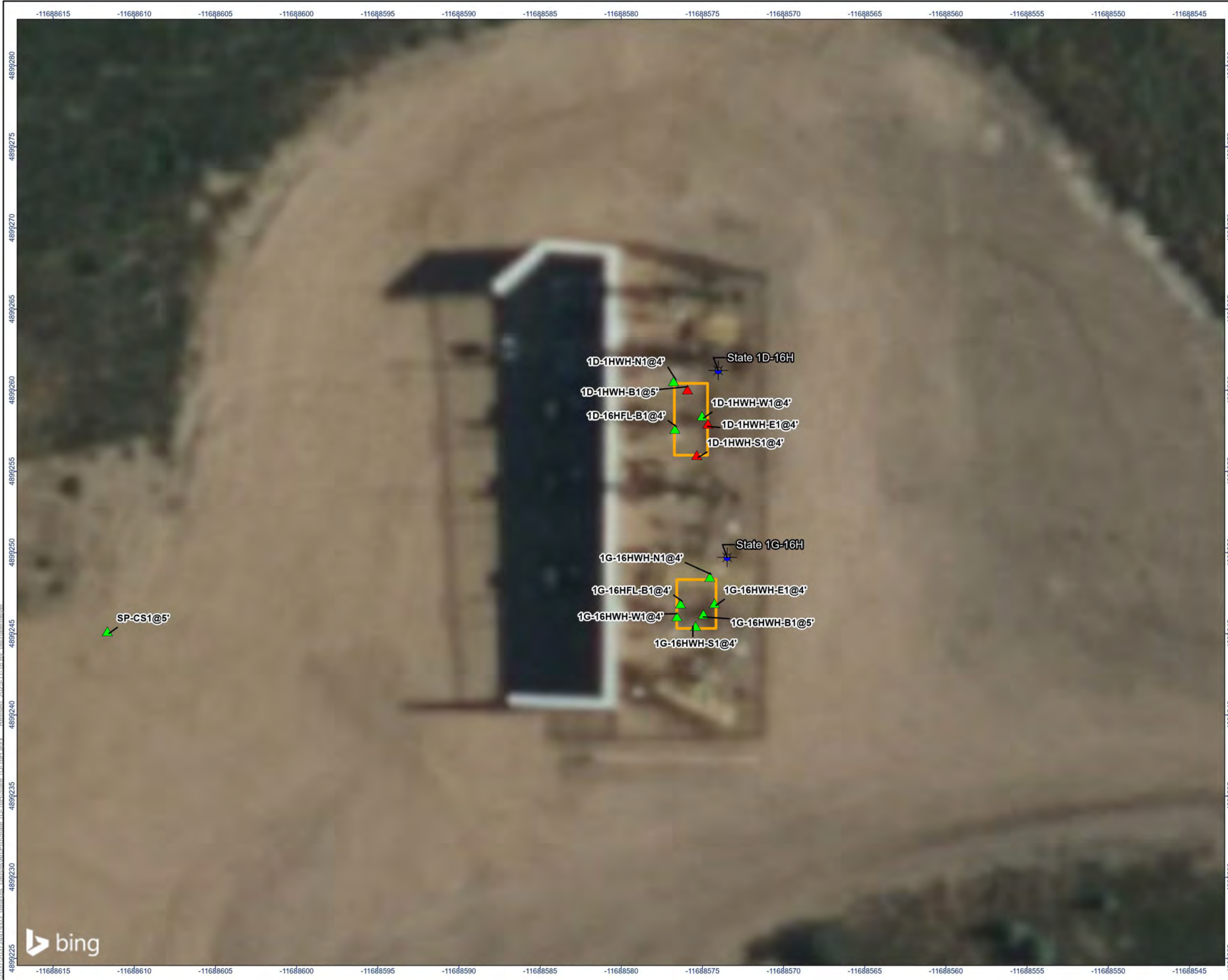
Figure No.

**1**

Title

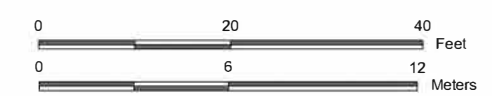
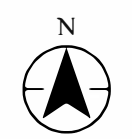
**SITE LOCATION MAP**

L:\2023\202324\2474\003\_data\gis\_data\arcpro\State\_1D-16H.mxd - Revised: 2025-11-17 8:17 AM - bschaffner



**Legend**

- Wellhead Location
- Approximate Excavation Extent
- Field Screening Location Without Observable Impacts
- Field Screening Location With Observable Impacts



(At original document size of 11x17) 1:240

- Notes**
1. Coordinate System: WGS 1984 Web Mercator Auxiliary Sphere
  2. Background: Bing Aerial Imagery



**Project Location**  
 NENE SEC 16 T3N R68W  
 WELD COUNTY, COLORADO

Drawn by BS on 11/18/2025  
 Reviewed by CR on 11/18/2025  
 203724474

**Client/Project**  
 CRESTONE PEAK RESOURCES OPERATING LLC (10633)  
 State 1D-16H & 1G-16H  
 (Remediation #41455)

**Figure No.**  
**2**

**Title**  
**SOIL SAMPLE LOCATIONS**



L:\2023\20230724\2023\_07\_24\_10\_03\_data\binis\_lead\binis\_lead\ArcInfo\State\_1D-16H\State\_1D-16H.mxd -Revised: 2025.11.18 Bv-bachalafarmeyer

# **Photographic Log**

Sample ID: **1D-16FL-B1@4**

Location:  
40.228874, -  
105.000271

Depth (ft): 4



Sample ID: **1D-16WH-W1@4**

Location:  
40.22888, -105.000256

Depth (ft): 4



Sample ID: **1D-16WH-S1@4**

Location:  
40.228863, -  
105.000259

Depth (ft): 4



Sample ID: **1D-16WH-E1@4**

Location:  
40.228876, -  
105.000253

Depth (ft): 4



Sample ID: **1D-16WH-N1@4**

Location:  
40.228894, -  
105.000272

Depth (ft): 4



Sample ID: **1G-16WH-B1@5**

Location:  
40.228891, -  
105.000264

Depth (ft): 5



Sample ID: **1D-16WH-B1@5**

Location:  
40.228796, -  
105.000255

Depth (ft): 5



Sample ID: **1G-16WH-N1@4**

Location:  
40.228812, -  
105.000252

Depth (ft): 4



Sample ID: **1G-16WH-E1@4**

Location:  
40.228801, -  
105.000249

Depth (ft): 4



Sample ID: **1G-16WH-S1@4**

Location:  
40.228791, -  
105.000259

Depth (ft): 4



Sample ID: **1G-16WH-W1@4**  
Location:  
40.228795, -105.00027  
Depth (ft): 4



Sample ID: **1G-16FL-B1@4**  
Location:  
40.228801, -  
105.000268  
Depth (ft): 4



Sample ID: **SP-CS1 @5**

Location:  
40.228842, -  
105.000577

Depth (ft):

