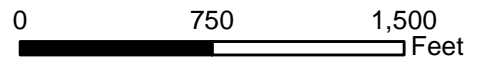
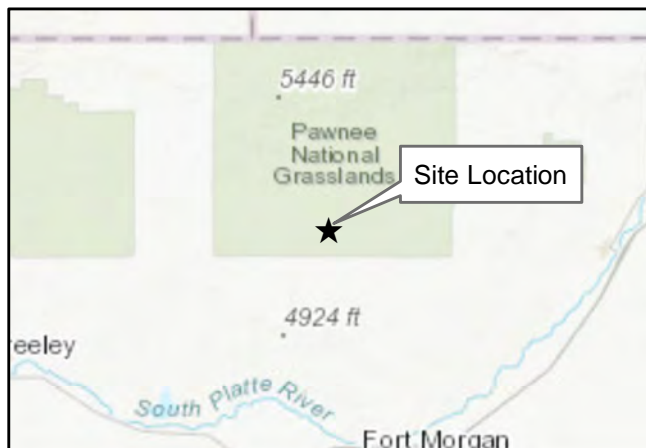


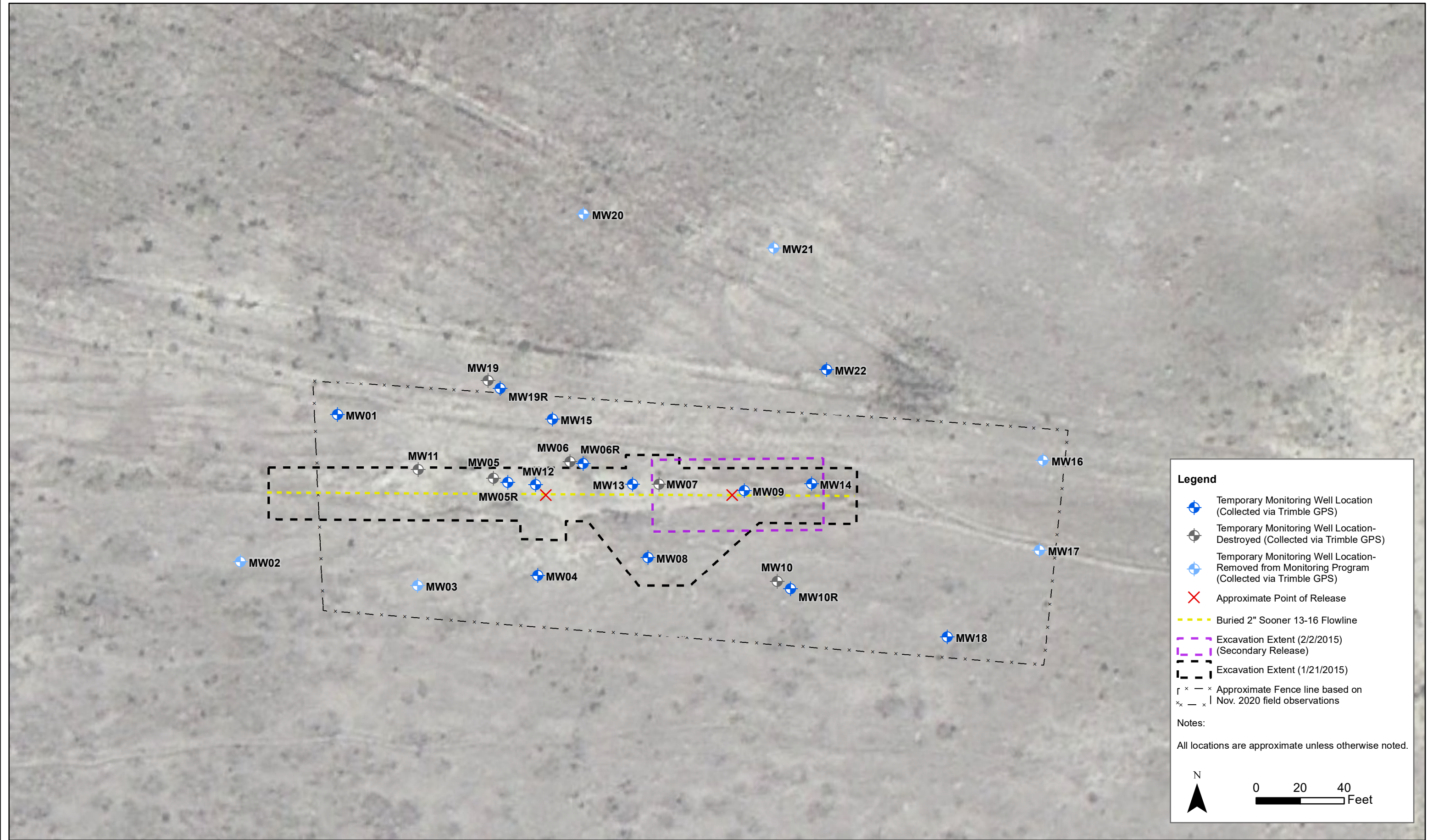
■ Release Location



### Figure 1

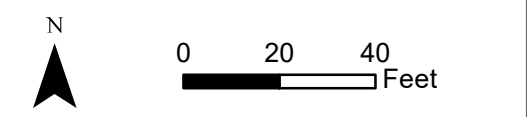
Site Location Map  
 Sooner 13-16  
 SESW Sec. 16-T8N-R58W  
 Weld County, Colorado





- Legend**
- Temporary Monitoring Well Location (Collected via Trimble GPS)
  - Temporary Monitoring Well Location-Destroyed (Collected via Trimble GPS)
  - Temporary Monitoring Well Location-Removed from Monitoring Program (Collected via Trimble GPS)
  - Approximate Point of Release
  - Buried 2" Sooner 13-16 Flowline
  - Excavation Extent (2/2/2015) (Secondary Release)
  - Excavation Extent (1/21/2015)
  - Approximate Fence line based on Nov. 2020 field observations

**Notes:**  
 All locations are approximate unless otherwise noted.



DATE: April 2024  
 DESIGNED BY: J. Watts  
 DRAWN BY: L. Reed

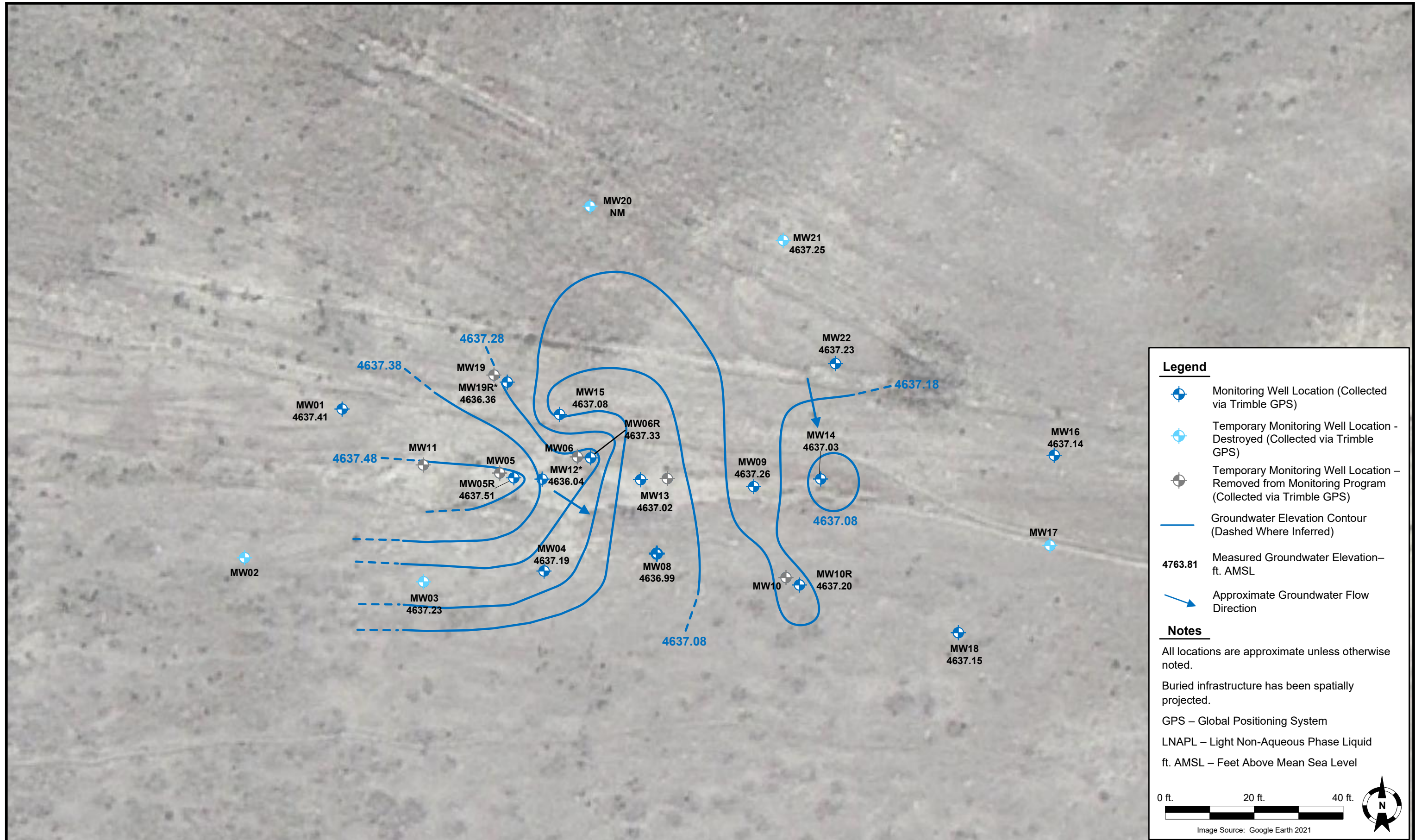


Tasman, Inc.  
 4725 Independence St.  
 Wheat Ridge, Colorado 80033

**Foundation Energy Inc.**  
**Sooner 13-16 Flowline Release**  
 SESW, Section 16, Township 8 North, Range 58 West  
 Weld County, Colorado

Site Map with Monitoring  
 Well Location

Figure  
 2



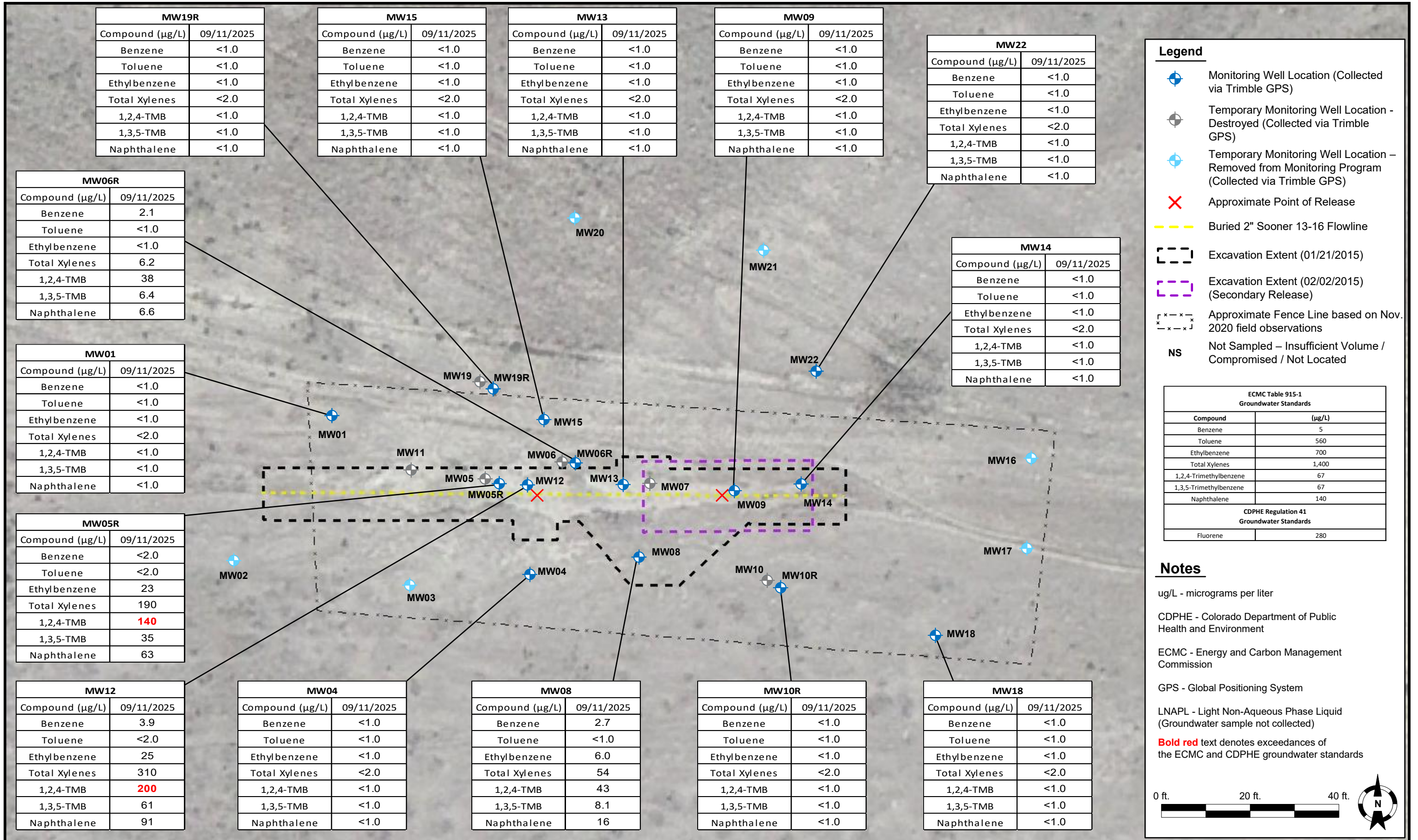
DATE:	November 12, 2025
DESIGNED BY:	J. Watts
DRAWN BY:	J. Clonts



**Foundation Energy Inc.**  
**Sooner 13-16 Flowline Release**  
 SESW, Section 16, Township 8 North, Range 58 West  
 Weld County, Colorado

Groundwater Potentiometric  
 Surface Contour Map  
 (09/11/2025)

FIGURE  
 3



DATE: November 11, 2025

DESIGNED BY: J. Watts

DRAWN BY: D. Moore



**Tasman, Inc.**  
4725 Independence St.  
Wheat Ridge, CO, 80033

**Foundation Energy Inc.**  
**Sooner 13-16 Flowline Release**  
SESW, Section 16, Township 8 North, Range 58 West  
Weld County, Colorado

Groundwater Analytical  
Map  
(September 11, 2025)

**FIGURE**  
4