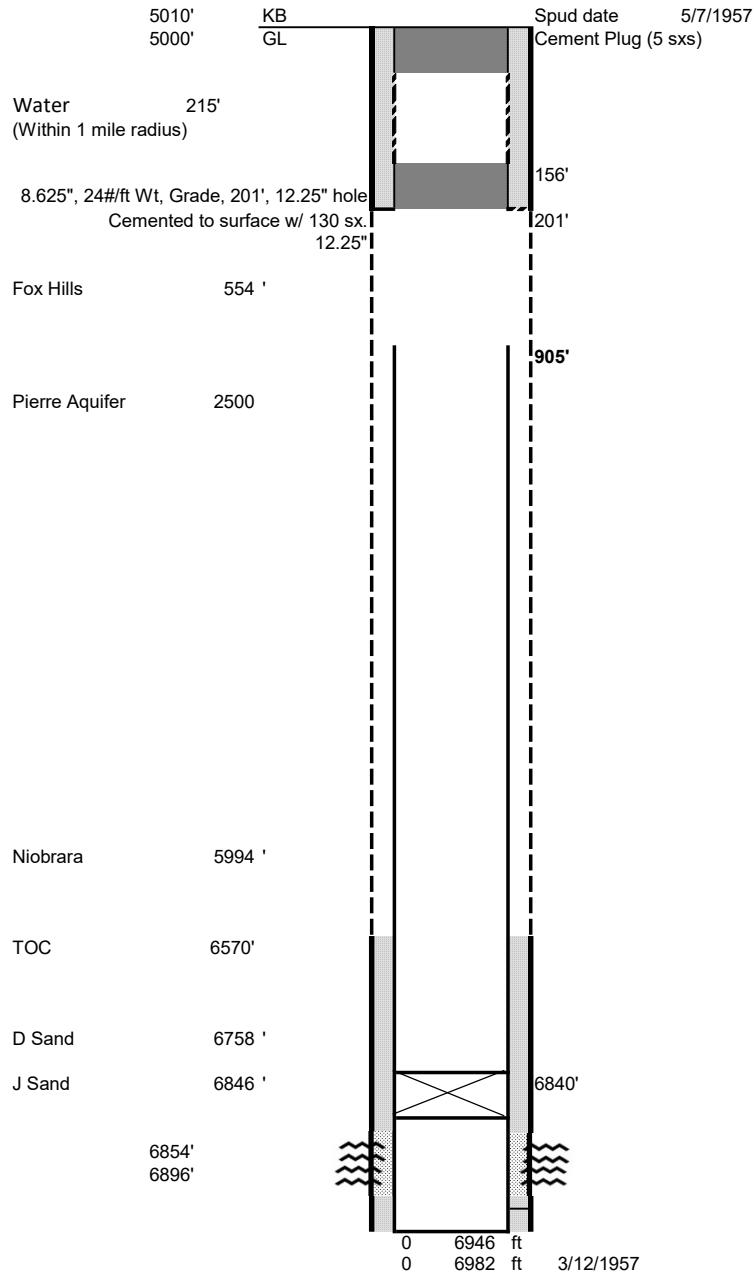


**PARRET 1 ACTUAL WBD**  
 660 FSL1992 FWL NENW 2 9N 59W 6  
 Lat 40.785254 Long -103.947989 (from footages)  
 Weld County, Colorado  
 API #05-123-05734



Well Name		PARRET 1 ACTUAL WBD		
Legal	660	FSL	1992	FWL
Lat/Long	40.785254	-103.947989		
NENW	2	9N	59W	6
API No.	05-123-05734			
Spud Date	5/7/1957			
KB	5010'			
GL	5000'			
Surface plug	15 sxs			
Fluid in hole	Heavy drilling mud			
Shoe Plug	15 sxs	201'-156'		
Surface Plug	5 sxs	15'-0'		
Surface Csg	8.625"	24#/ft Wt	Grade	201'
Surface Cement	Cemented to surface w/ 130 sx.			
Surf Hole Size	12.25"			
Production Csg	4-1/2" 11.6" & 9.5 I	905' - 6980'		
Production Cement	6570' (75 sxs)			
Hole size	7.875			
PBTD	6946			
TD	6982	3/12/1957		
Water	215'	1 mile radius		
Formations:	As found in well:			
	Fox Hills	554		
	Pierre Aquifer	2500		
	Niobrara	5994		
	Fort Hays	6234		
	Greenhorn	6391		
	D Sand	6758		
	J Sand	6846		