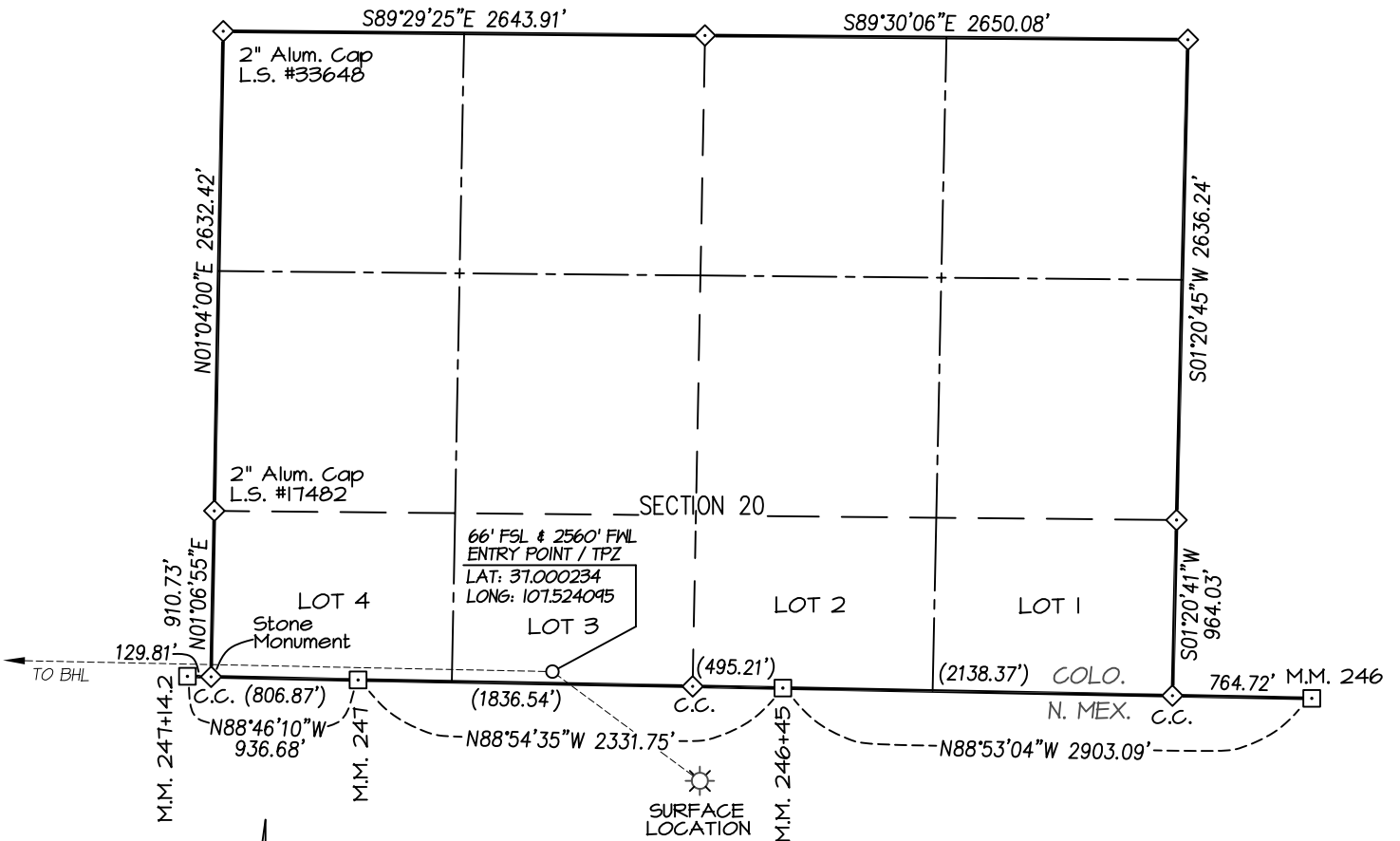
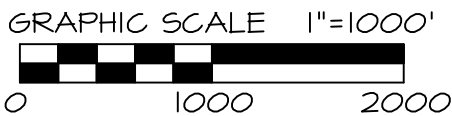


HILCORP ENERGY COMPANY: ALLISON UNIT #614H
SURFACE LOCATION: 518' FNL & 1560' FWL
SECTION 12, T-32-N, R-7-W, N.M.P.M., SAN JUAN COUNTY, NEW MEXICO. ELEVATION: 6352'
BOTTOM HOLE LOCATION: 67' FSL, 798' FEL
SECTION 23, T-32-N, R-7-W, N.M.P.M., LA PLATA COUNTY, COLORADO.



- denotes found 1925 Supreme Court Mile Marker Brass Tab
- ◇ denotes found 3-1/4" alum. cap L.S. #23894 unless otherwise noted.

SHEET 1 OF 5



NOTE:
 SEE SHEET 5 OF 5 FOR COORDINATE TABLE,
 SURVEY NOTES, AND SURVEYOR'S CERTIFICATE.

REVISED: 4/2/25
 DRAWN BY: K.R. SURVEYED: 7/19/23
 CHECKED BY: K.R. DRAWN: 10/19/23
 FILE NO.: HICAMPT JOB NO. HC004

PREPARED FOR:
HILCORP ENERGY COMPANY

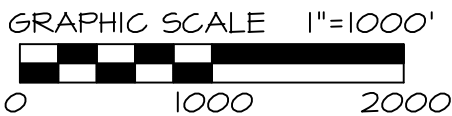
NORTHSTAR
SURVEYING & MAPPING, INC.

768 County Rd. 308
 DURANGO, CO. 81303
 (970) 385-0851

HILCORP ENERGY COMPANY: ALLISON UNIT #614H
SURFACE LOCATION: 518' FNL & 1560' FWL
SECTION 12, T-32-N, R-7-W, N.M.P.M., SAN JUAN COUNTY, NEW MEXICO. ELEVATION: 6352'
BOTTOM HOLE LOCATION: 67' FSL, 798' FEL
SECTION 23, T-32-N, R-7-W, N.M.P.M., LA PLATA COUNTY, COLORADO.



- denotes found 1925 Supreme Court Mile Marker Brass Tab
- ◇ denotes found 3-1/4" alum. cap L.S. #12027 unless otherwise noted.



NOTE:
 SEE SHEET 5 OF 5 FOR COORDINATE TABLE,
 SURVEY NOTES, AND SURVEYOR'S CERTIFICATE.

SHEET 2 OF 5

REVISED: 4/2/25 DRAWN BY: K.R. CHECKED BY: K.R. FILE NO.: HCAMP2 JOB NO. HC004	SURVEYED: 7/19/23 DRAWN: 10/19/23	PREPARED FOR: HILCORP ENERGY COMPANY
	NORTHSTAR SURVEYING & MAPPING, INC. 768 County Rd. 308 DURANGO, CO. 81303 (970) 385-0851	

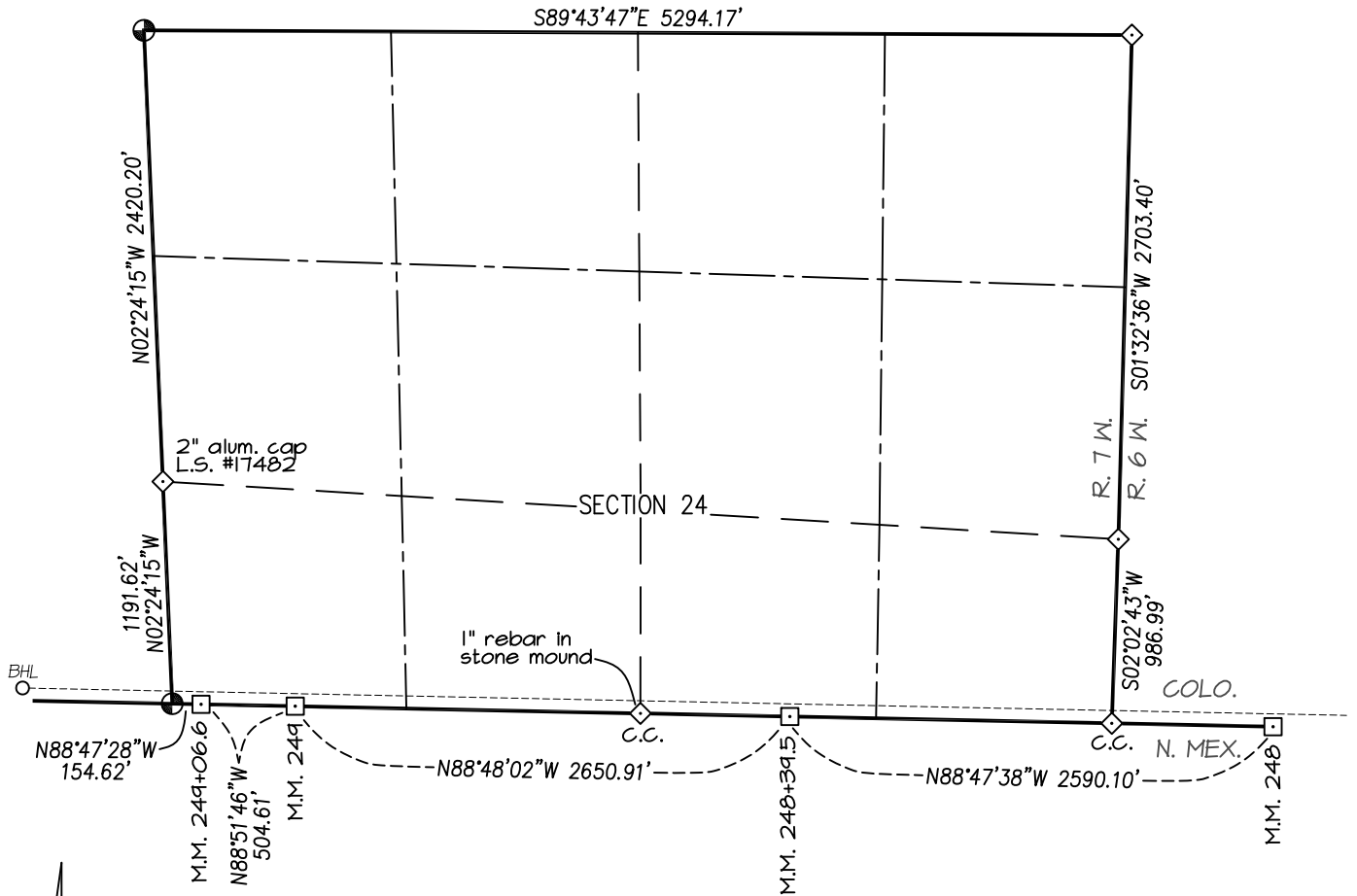
HILCORP ENERGY COMPANY: ALLISON UNIT #614H

SURFACE LOCATION: 518' FNL & 1560' FWL

SECTION 12, T-32-N, R-7-W, N.M.P.M., SAN JUAN COUNTY, NEW MEXICO. ELEVATION: 6352'

BOTTOM HOLE LOCATION: 67' FSL, 798' FEL

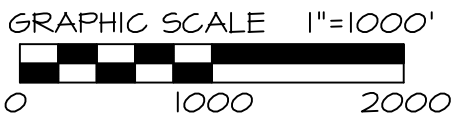
SECTION 12, T-32-N, R-7-W, N.M.P.M., SAN JUAN COUNTY, NEW MEXICO. ELEVATION: 6352'



⊙ and ⊗ denote found 3-1/4" S.U.I.R.
Alum. Cap unless otherwise noted.

□ denotes found 1925 Supreme Court
Mile Marker Brass Tab

◇ denotes found 3-1/4" alum. cap
L.S. #12027 unless otherwise noted.



NOTE:
SEE SHEET 5 OF 5 FOR COORDINATE TABLE,
SURVEY NOTES, AND SURVEYOR'S CERTIFICATE.

SHEET 3 OF 5

REVISED: 4/2/25
DRAWN BY: K.R. SURVEYED: 7/19/23
CHECKED BY: K.R. DRAWN: 10/19/23
FILE NO.: HC4MP3 JOB NO. HC004

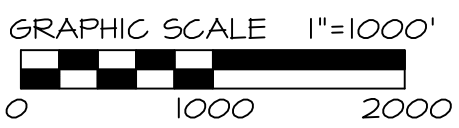
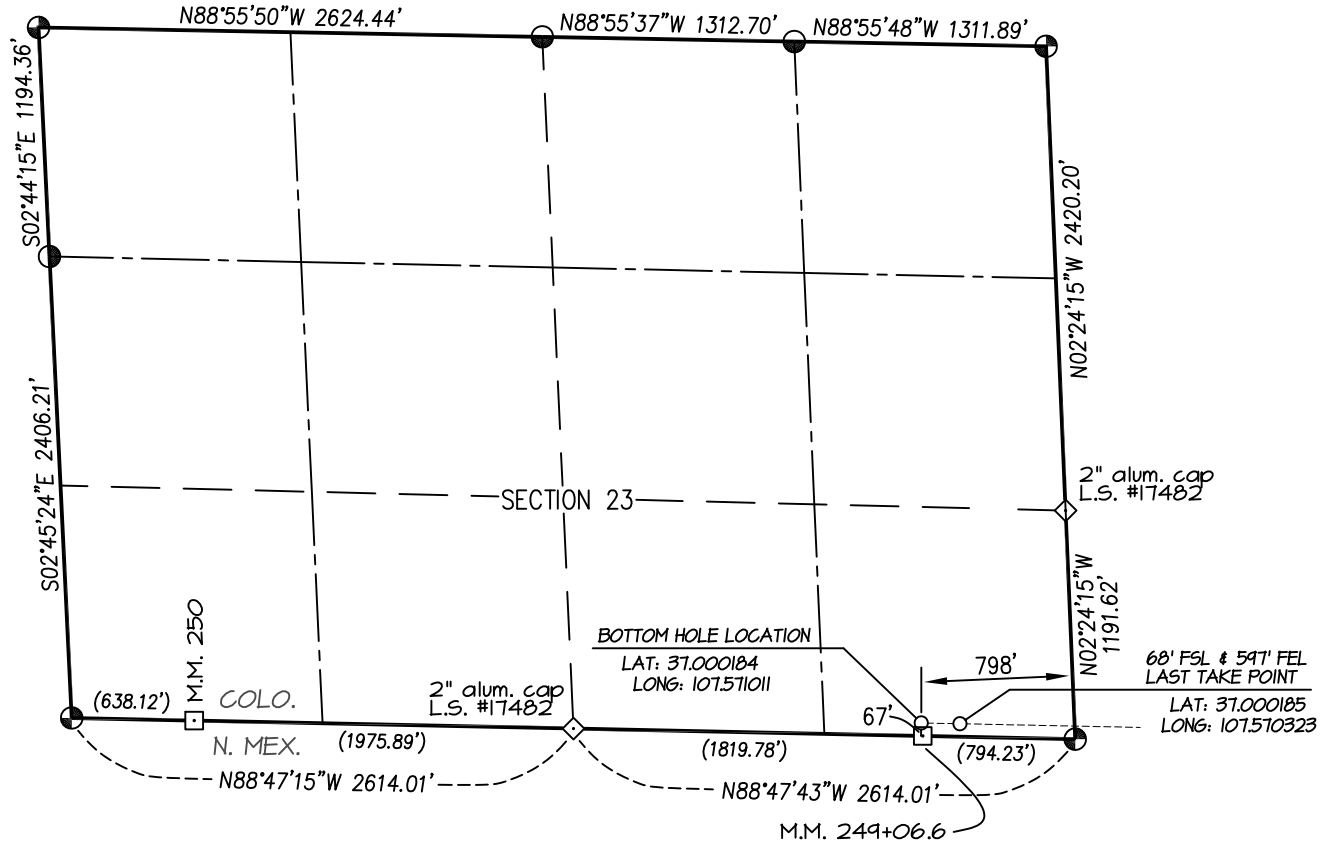
PREPARED FOR:

HILCORP ENERGY COMPANY

**NORTHSTAR
SURVEYING & MAPPING, INC.**

768 County Rd. 308
DURANGO, CO. 81303
(970) 385-0851

HILCORP ENERGY COMPANY: ALLISON UNIT #614H
SURFACE LOCATION: 518' FNL & 1560' FWL
SECTION 12, T-32-N, R-7-W, N.M.P.M., SAN JUAN COUNTY, NEW MEXICO. ELEVATION: 6352'
BOTTOM HOLE LOCATION: 67' FSL, 798' FEL
SECTION 23, T-32-N, R-7-W, N.M.P.M., LA PLATA COUNTY, COLORADO.



NOTE:
 SEE SHEET 5 OF 5 FOR COORDINATE TABLE,
 SURVEY NOTES, AND SURVEYOR'S CERTIFICATE.

- ⊕ and ⊙ denote found 3-1/4" S.U.I.R. Alum. Cap unless otherwise noted.
- denotes found 1925 Supreme Court Mile Marker Brass Tab
- ◇ denotes found 3-1/4" alum. cap L.S. #12027 unless otherwise noted.

SHEET 4 OF 5

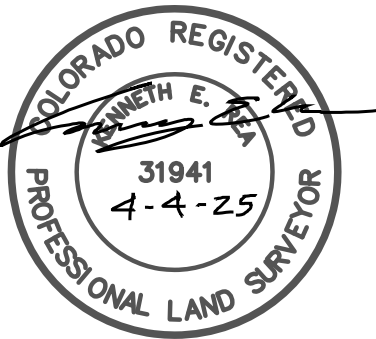
REVISED: 4/2/25 DRAWN BY: K.R. CHECKED BY: K.R. FILE NO.: HCAMP4	SURVEYED: 7/19/23 DRAWN: 10/19/23 JOB NO. HC004	PREPARED FOR: HILCORP ENERGY COMPANY
	NORTHSTAR SURVEYING & MAPPING, INC. 768 County Rd. 308 DURANGO, CO. 81303 (970) 385-0851	

HILCORP ENERGY COMPANY: ALLISON UNIT #614H
SURFACE LOCATION: 518' FNL & 1560' FWL
SECTION 12, T-32-N, R-7-W, N.M.P.M., SAN JUAN COUNTY, NEW MEXICO. ELEVATION: 6352'
BOTTOM HOLE LOCATION: 67' FSL, 798' FEL
SECTION 23, T-32-N, R-7-W, N.M.P.M., LA PLATA COUNTY, COLORADO.

ALLISON UNIT #614H	CSZ NAD '83	NAD '83	TIES	SEC/TWP/RNG
SURFACE HOLE LOCATION	N (Y) = 1,127,265.18' E (X) = 2,409,725.80'	LAT: 36.998637°N LONG: 107.521281°W	518' FNL 1560' FWL	SECTION 12 (N. MEX.) T-32-N, R-7-W
ENTRY POINT / TPZ	N (Y) = 1,127,864.50' E (X) = 2,408,916.92'	LAT: 37.000234°N LONG: 107.524095°W	66' FSL 2560' FWL	SECTION 20 (COLO.) T-32-N, R-6-W
LAST TAKE POINT	N (Y) = 1,128,142.53' E (X) = 2,395,418.96'	LAT: 37.000185°N LONG: 107.570323°W	68' FSL 597' FEL	SECTION 23 (COLO.) T-32-N, R-7-W
BOTTOM HOLE LOCATION	N (Y) = 1,128,146.46' E (X) = 2,395,217.89'	LAT: 37.000184°N LONG: 107.571011°W	67' FSL 798' FEL	SECTION 23 (COLO.) T-32-N, R-7-W

NOTES:

1. WELL LOCATION FOOTAGE CALLS MEASURED PERPENDICULAR TO SECTION LINES.
2. WELL GPS OBSERVATION PERFORMED BY JASON EDWARDS ON 7/19/23 - PDOP VALUE = 1.7
3. BEARINGS & DISTANCE SHOWN ARE FIELD MEASURED UNLESS OTHERWISE NOTED.
4. ALL MEASURED DISTANCES SHOWN ARE GRID DISTANCE WITH NO SCALE FACTOR APPLIED.
5. BEARINGS ARE BASED ON THE NORTH AMERICAN DATUM OF 1983, COLORADO SOUTH STATE PLANE COORDINATE SYSTEM, ZONE 0503.
6. ELEVATION IS BASED ON THE NORTH AMERICAN VERTICAL DATUM OF 1988 (GEOID18).



I, KENNETH E. REA, A REGISTERED PROFESSIONAL LAND SURVEYOR IN THE STATE OF COLORADO, DO HEREBY CERTIFY THAT THE WELL LOCATION SHOWN ON THIS PLAT IS ACCURATELY PLOTTED FROM FIELD NOTES OF ACTUAL SURVEYS MADE UNDER MY DIRECT SUPERVISION, AND THAT THIS PLAT IS NOT A LAND SURVEY PLAT OR IMPROVEMENT SURVEY PLAT, AND THAT IT IS NOT TO BE RELIED UPON FOR THE ESTABLISHMENT OF FENCE, BUILDING, OR OTHER FUTURE IMPROVEMENT LINES.

SHEET 5 OF 5

REVISED: 4/2/25	DRAWN BY: K.R.	CHECKED BY: K.R.	FILE NO.: HC4MP5	JOB NO. HC004	PREPARED FOR: HILCORP ENERGY COMPANY
SURVEYED: 7/19/23	DRAWN: 10/19/23				NORTHSTAR SURVEYING & MAPPING, INC.
					768 County Rd. 308 DURANGO, CO. 81303 (970) 385-0851

~ FEE SURFACE OWNERS ~

**Bryce Sean Washburn &
Sean and Dawnette Washburn**

GRAPHIC SCALE 1"=100'



3647.5' TOTAL LENGTH OF ACCESS

31.6' SAN JUAN COUNTY (CR #4020)
3570.6' SEAN & DAWNETTE WASHBURN
45.3' BRYCE SEAN WASHBURN

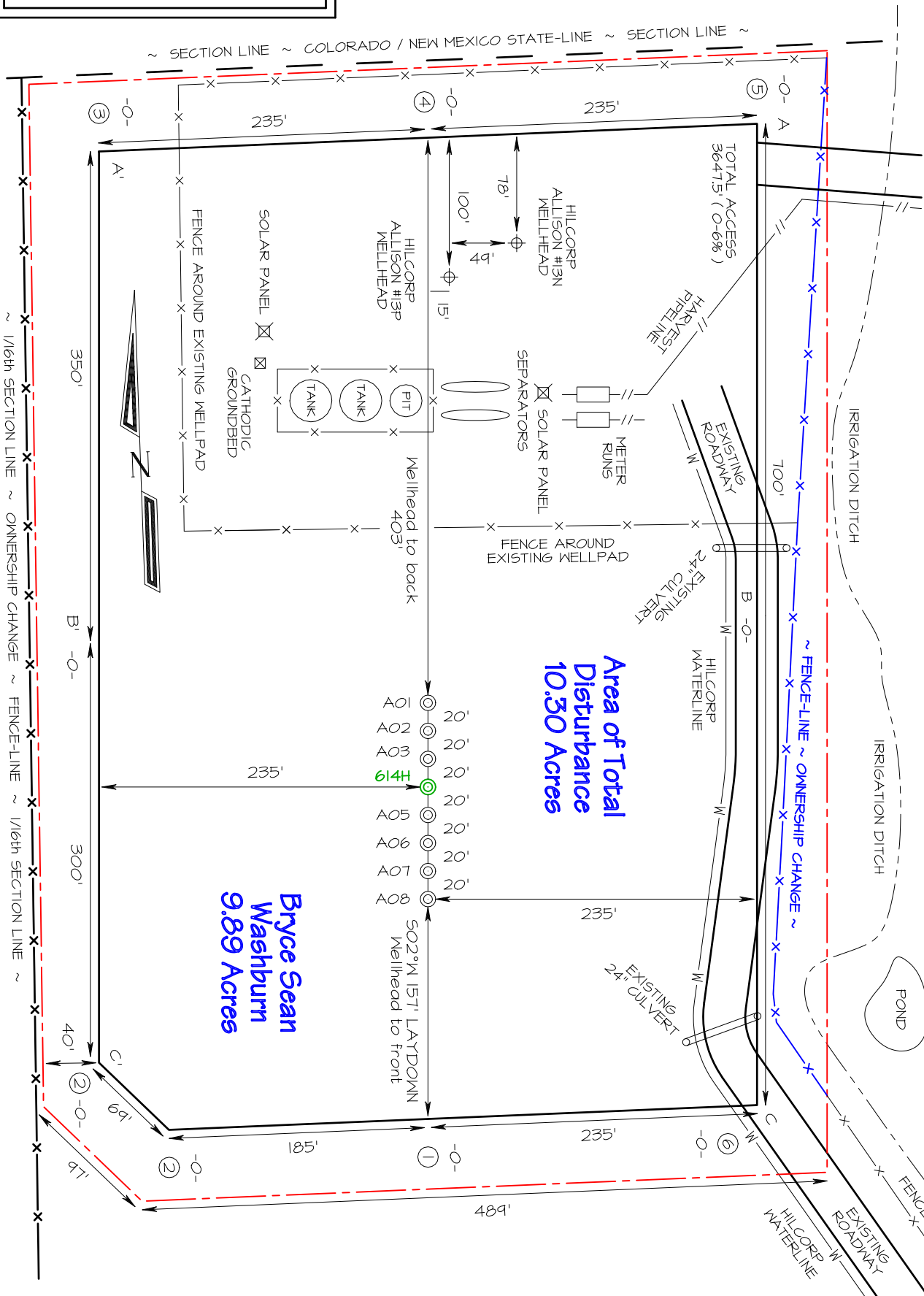
HILCORP ENERGY COMPANY ALLISON UNIT #614H
518' FNL & 1560' FWL, SECTION 12, T32N, R7W, NMPM
SAN JUAN COUNTY, NEW MEXICO ELEVATION: 6352'
LAT 36.998637°N LONG -107.521281°W DATUM: NAD1983

**Sean & Dawnette
Washburn**
0.41 Acres

**Bryce Sean
Washburn**
9.89 Acres

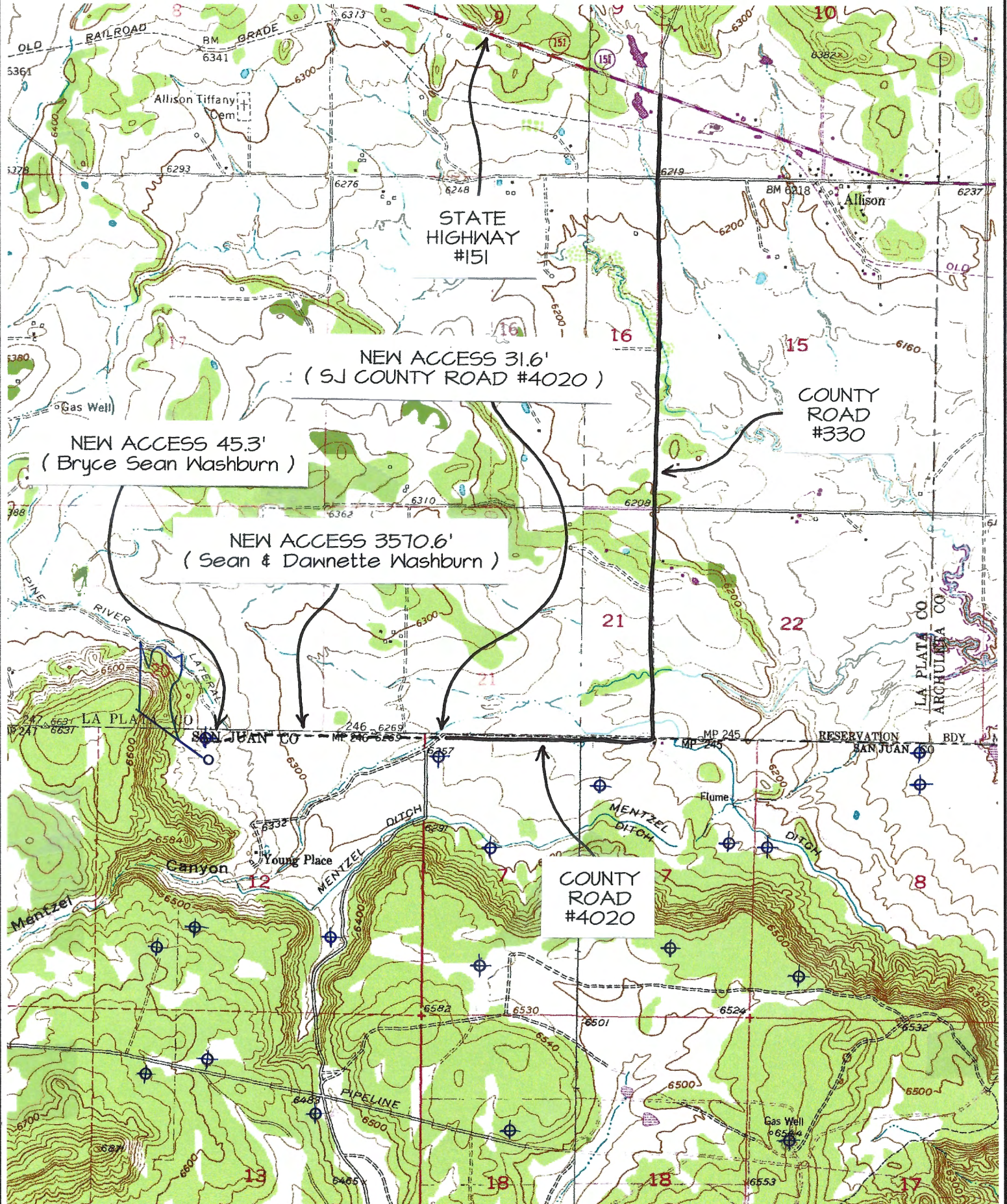
**Area of Total
Disturbance**
10.30 Acres

Steel T-Posts have been set to define Edge of Disturbance which is 50' wide, unless otherwise noted.



HILCORP ENERGY COMPANY ALLISON UNIT #614H

518' FSL & 1560' FWL, SECTION 12, T32N, R7W, N.M.P.M.
SAN JUAN COUNTY, NEW MEXICO



TOPO NAME : BURNT MESA

⊕ PRODUCING WELL

⊗ PLUGGED & ABANDONED WELL

Directions from Intersection of State Hwy 172 & State Hwy 151 in Ignacio, CO

to Hilcorp Energy Company Allison Unit #614H

518' FNL & 1560' FWL, Section 12, T32N, R7W, N.M.P.M., San Juan County, NM

Latitude 36.998637°N Longitude -107.521281°W Datum: NAD1983

From the intersection of State Hwy 172 & State Hwy 151 in Ignacio, CO, travel Easterly on State Hwy 151 for 12.0 miles to County Road #330:

Go Right (Southerly) on County Road #330 for 1.9 miles to County Road #4020;

Go Right (Westerly) on County Road #4020 for 0.6 miles to new access on right-hand side which continues for 3647.5' to Hilcorp Allison Unit #614H existing wellpad.