

Inspection/Audit Photos

Location: QB ENERGY OPERATING LLC ELU J14/FED-496 PAD

Location ID: 467272

Date: 11/6/2025

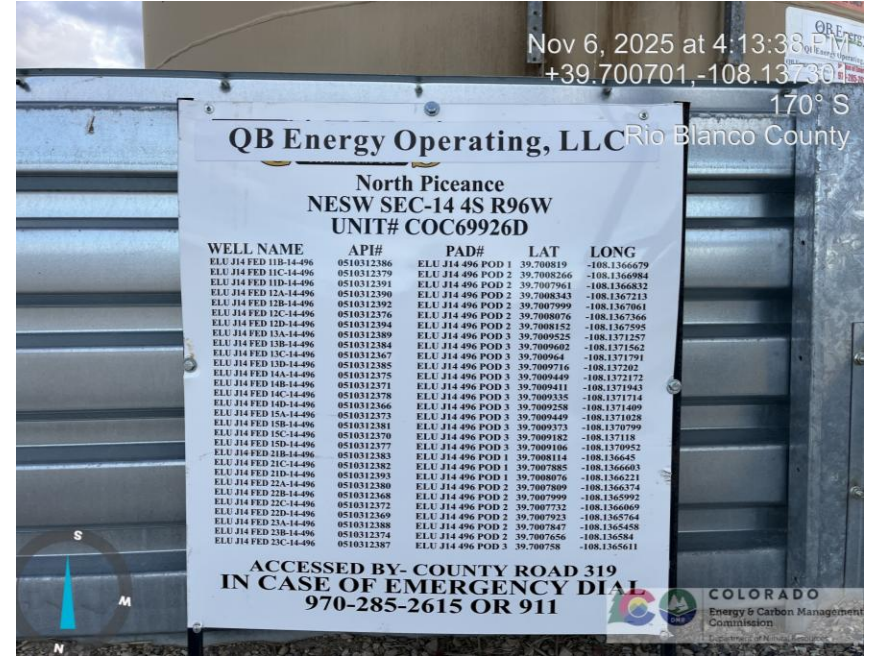


Photo # 3832 Entrance to location

Photo # 3879 Location

Inspection/Audit Photos

Location: QB ENERGY OPERATING LLC ELU J14/FED-496 PAD

Location ID: 467272

Date: 11/6/2025



Photo # 3833 Location



Photo # 3834 Location

Inspection/Audit Photos

Location: QB ENERGY OPERATING LLC ELU J14/FED-496 PAD

Location ID: 467272

Date: 11/6/2025



Photo # 3835 Location



Photo # 3868 Location

Inspection/Audit Photos

Location: QB ENERGY OPERATING LLC ELU J14/FED-496 PAD

Location ID: 467272

Date: 11/6/2025



Photo # 3869 Location



Photo # 3870 Location

Inspection/Audit Photos

Location: QB ENERGY OPERATING LLC ELU J14/FED-496 PAD

Location ID: 467272

Date: 11/6/2025



Photo # 3871 Location

Photo # 3874 Location

Inspection/Audit Photos

Location: QB ENERGY OPERATING LLC ELU J14/FED-496 PAD

Location ID: 467272

Date: 11/6/2025



Photo # 3876 Location



Photo #3901 NW corner of location

Inspection/Audit Photos

Location: QB ENERGY OPERATING LLC ELU J14/FED-496 PAD

Location ID: 467272

Date: 11/6/2025



Photo # 3902 SW corner of location



Photo # 3903 SE corner of location

Inspection/Audit Photos

Location: QB ENERGY OPERATING LLC ELU J14/FED-496 PAD

Location ID: 467272

Date: 11/6/2025



Nov 6, 2025 at 4:57:31 PM
+39.701071, -108.136068
239° SW
Rio Blanco County



Nov 6, 2025 at 4:16:38 PM
+39.700754, -108.137334
174° S
Rio Blanco County

QB Energy Operating, LLC
NORTH Piceance
TANK # 1/2/3
NWSE SEC-34 6S R93W
UNIT # COC69926D

WELL NAME	API#	PAD#	LAT	LONG
ELU J14 FED 118-14-496	051812386	ELU J14 496 POD 1	39.708819	-108.1366679
ELU J14 FED 119-14-496	051812379	ELU J14 496 POD 2	39.7085266	-108.1364894
ELU J14 FED 120-14-496	051812391	ELU J14 496 POD 2	39.7087961	-108.1366827
ELU J14 FED 121-14-496	051812390	ELU J14 496 POD 2	39.7088343	-108.1367231
ELU J14 FED 122-14-496	051812392	ELU J14 496 POD 2	39.7087999	-108.1367061
ELU J14 FED 123-14-496	051812376	ELU J14 496 POD 2	39.7088876	-108.1367566
ELU J14 FED 124-14-496	051812384	ELU J14 496 POD 2	39.7088152	-108.1367595
ELU J14 FED 125-14-496	051812389	ELU J14 496 POD 3	39.7089252	-108.1371257
ELU J14 FED 126-14-496	051812384	ELU J14 496 POD 3	39.7089602	-108.1371562
ELU J14 FED 127-14-496	051812384	ELU J14 496 POD 3	39.7089664	-108.1371797
ELU J14 FED 128-14-496	051812385	ELU J14 496 POD 3	39.7089716	-108.1372027
ELU J14 FED 129-14-496	051812375	ELU J14 496 POD 3	39.7089449	-108.1372172
ELU J14 FED 14A-14-496	051812373	ELU J14 496 POD 3	39.7088411	-108.1371943
ELU J14 FED 14B-14-496	051812378	ELU J14 496 POD 3	39.7089335	-108.1371714
ELU J14 FED 14C-14-496	051812366	ELU J14 496 POD 3	39.7089258	-108.1371600
ELU J14 FED 14D-14-496	051812373	ELU J14 496 POD 3	39.7089449	-108.1371828
ELU J14 FED 14E-14-496	051812381	ELU J14 496 POD 3	39.7089373	-108.1370799
ELU J14 FED 14F-14-496	051812379	ELU J14 496 POD 3	39.7089182	-108.1371188
ELU J14 FED 14G-14-496	051812377	ELU J14 496 POD 3	39.7089196	-108.1370922
ELU J14 FED 14H-14-496	051812383	ELU J14 496 POD 1	39.7088114	-108.1366645
ELU J14 FED 14I-14-496	051812382	ELU J14 496 POD 1	39.7087885	-108.1366603
ELU J14 FED 14J-14-496	051812393	ELU J14 496 POD 1	39.7088076	-108.1366221
ELU J14 FED 21C-14-496	70312380	ELU J14 496 POD 2	39.7087889	-108.1366374
ELU J14 FED 21D-14-496	051812368	ELU J14 496 POD 2	39.7087999	-108.1368992
ELU J14 FED 22C-14-496	051812372	ELU J14 496 POD 2	39.7087732	-108.1366609
ELU J14 FED 22D-14-496	051812369	ELU J14 496 POD 2	39.7087923	-108.1366564
ELU J14 FED 23A-14-496	051812388	ELU J14 496 POD 2	39.7087847	-108.1365458
ELU J14 FED 23B-14-496	051812374	ELU J14 496 POD 2	39.7087656	-108.1365884
ELU J14 FED 23C-14-496	051812387	ELU J14 496 POD 3	39.708758	-108.1365611

ACCESSED BY-DIVIDE ROAD
IN CASE OF EMERGENCY DIAL
970-285-2615 OR 911

Photo # 3904 NE corner of location

Photo # 3881 Damaged sign contains inaccurate information

Inspection/Audit Photos

Location: QB ENERGY OPERATING LLC ELU J14/FED-496 PAD

Location ID: 467272

Date: 11/6/2025

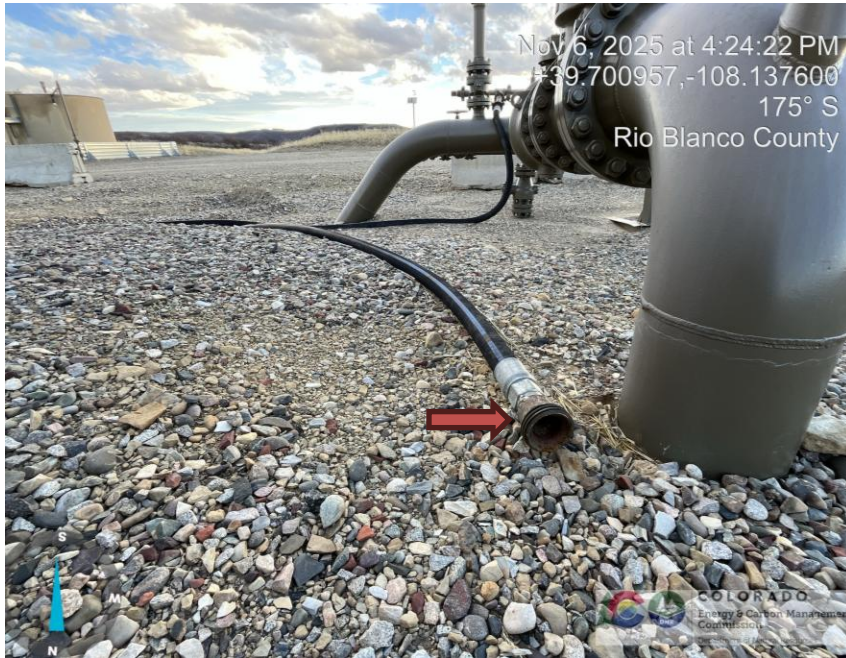


Photo # 3889 Open ended pressure hose/wildlife hazard/available for entry by wildlife

Photo # 3890 Unused flowline lacks lockout tagout (OOSLAT)

Inspection/Audit Photos

Location: QB ENERGY OPERATING LLC ELU J14/FED-496 PAD

Location ID: 467272

Date: 11/6/2025

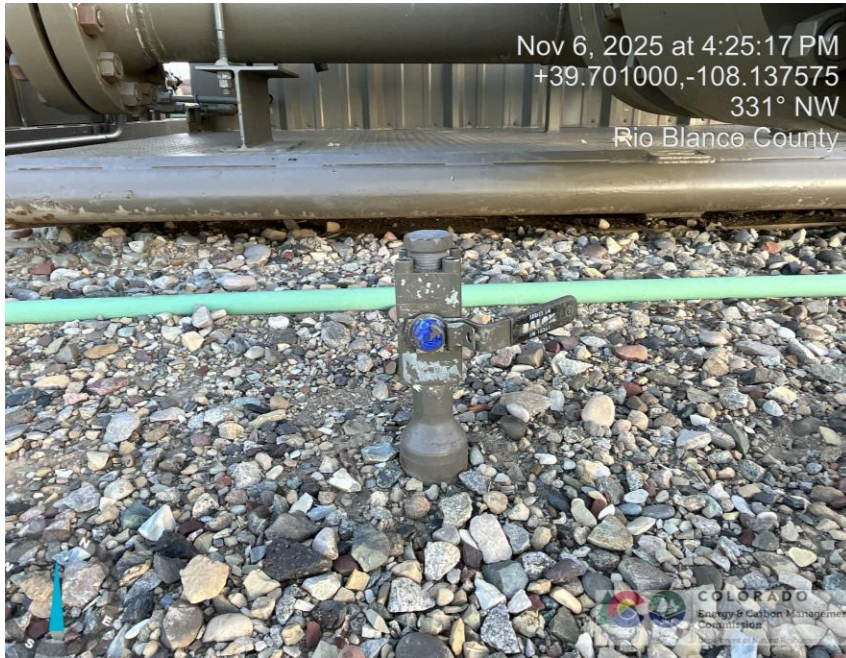


Photo # 3891 Unused flowline lacks lockout tagout (OOSLAT)



Photo # 3893 Unused flowline lacks lockout tagout (OOSLAT)

Inspection/Audit Photos

Location: QB ENERGY OPERATING LLC ELU J14/FED-496 PAD

Location ID: 467272

Date: 11/6/2025



Photo # 3897 Debris

Photo # 3898 Debris

Inspection/Audit Photos

Location: QB ENERGY OPERATING LLC ELU J14/FED-496 PAD

Location ID: 467272

Date: 11/6/2025



Photo # 3899 Debris



Photo # 3900 Debris