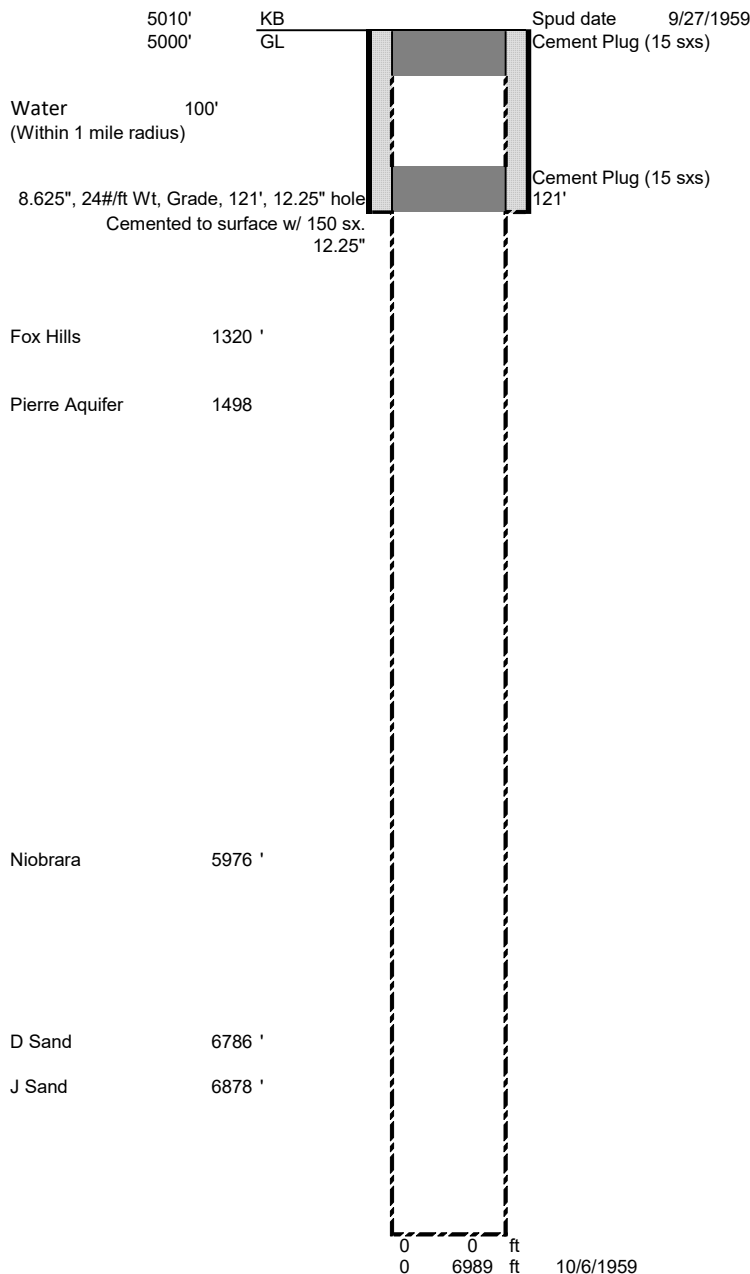


**Nelson 1 ACTUAL WBD**  
**660 FSL660 FEL SESE 26 10N 59W 6**  
**Lat 40.803384 Long -103.938739 (from footages)**  
**Weld County, Colorado**  
**API #05-123-05747**



0 0 ft  
0 6989 ft 10/6/1959

**Nelson 1 ACTUAL WBD**

Well Name	660	FSL	660	FEL
Legal	40.803384	-103.938739		
Lat/Long	26	10N	59W	6
SESE	05-123-05747			
API No.	9/27/1959			
Spud Date	5010'			
KB	5000'			
GL				
Surface plug				
Fluid in hole	Heavy drilling mud			
Shoe plug				
Surface Csg	8.625"	24#/ft Wt	Grade	121'
Surface Cement	Cemented to surface w/ 150 sx.			
Surf Hole Size	12.25"			
Production Csg	NA			
Production Cement	NA			
Hole size	7.875			
PBTD	NA			
TD	6989	10/6/1959		
Water	100'	1 mile radius		
Formations:	As found in well:			
	Fox Hills	1320		
	Pierre Aquifer	1498		
	Niobrara	5976		
	Fort Hays			
	Greenhorn			
	D Sand	6786		
	J Sand	6878		