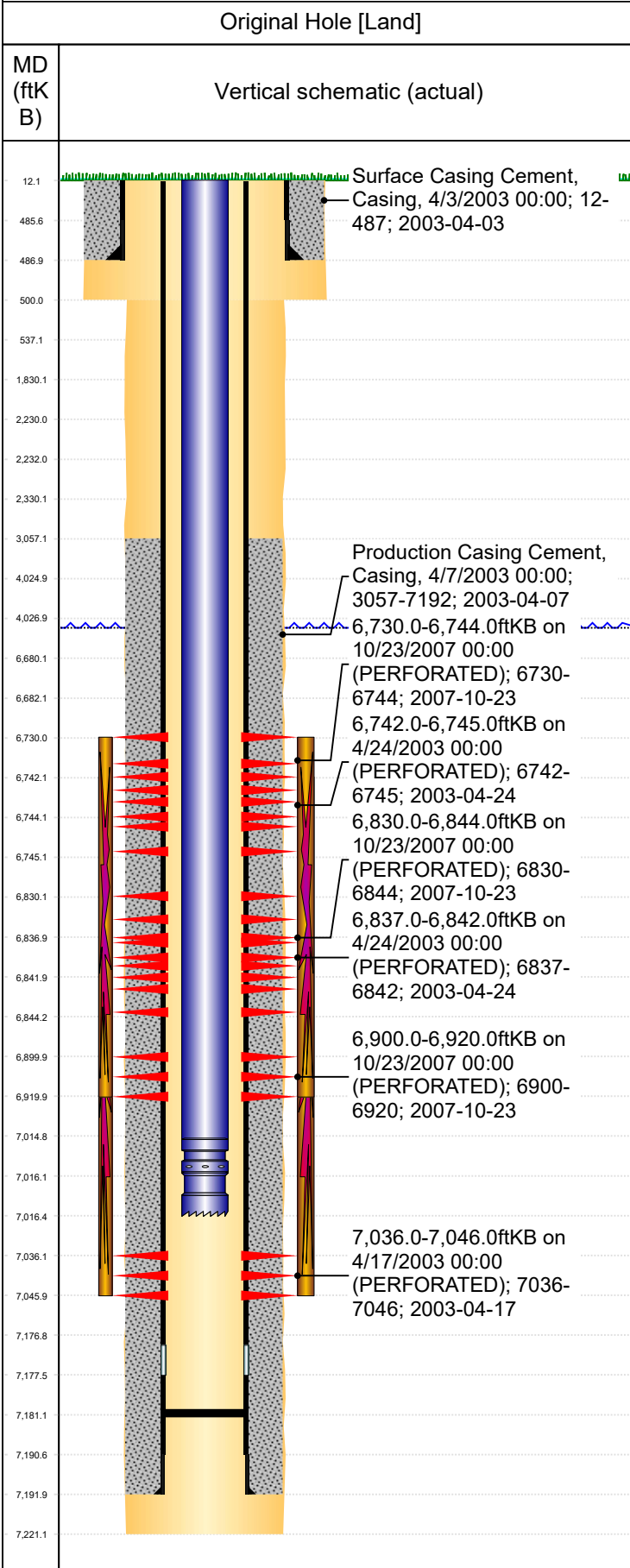




PA Wellbore For State - Vertical

Well Name: BOHOA 1-14



Well Header				
Surface UWI	Business Unit	Gov Auth Dist	Prod Tree Loc	
0512321396	Rockies		Land	
Orig. KB to Gnd (ft)	Original Spud Date	Abandon Date	Well Sub-Status	High...
12.00	4/3/2003		PR	N
Comment				
LIMITED ENTRY. STATE SHOWS SI SINCE NOV 2016. NO RECENT TAG GIVEN.				

Geologic Horizons	
Formation Name	Final Top MD (ftKB)
FT HAYS	
Formation Name	Final Top MD (ftKB)
CODELL	7,034.0
Formation Name	Final Top MD (ftKB)
NIOBRARA	6,730.0
Formation Name	Final Top MD (ftKB)
SUSSEX	
Formation Name	Final Top MD (ftKB)
FOX HILLS BASE EST	372.0
Formation Name	Final Top MD (ftKB)
NIOBRARA A	6,746.0
Formation Name	Final Top MD (ftKB)
NIOBRARA C	6,930.0
Formation Name	Final Top MD (ftKB)
FORT HAYS	7,010.0
Formation Name	Final Top MD (ftKB)
GREENHORN	7,095.0
Formation Name	Final Top MD (ftKB)
NIOBRARA B	6,846.0
Formation Name	Final Top MD (ftKB)
A SAND-TOP PROD	2,350.3
Formation Name	Final Top MD (ftKB)
NIO A MARL	6,745.8
Formation Name	Final Top MD (ftKB)
NIO C CHALK	6,898.2
Formation Name	Final Top MD (ftKB)
CARLILE	7,051.8
Formation Name	Final Top MD (ftKB)
NIO B CHALK	6,812.8
Formation Name	Final Top MD (ftKB)
FOXHILLS-BASE PROD	350.3
Formation Name	Final Top MD (ftKB)
NIO C MARL	6,930.5
Formation Name	Final Top MD (ftKB)
SUSSEX-TOP PROD	4,075.2
Formation Name	Final Top MD (ftKB)
NIO D CHALK	6,977.1
Formation Name	Final Top MD (ftKB)
SUSSEX-BASE PROD	4,419.3
Formation Name	Final Top MD (ftKB)
NIO B MARL	6,846.1
Formation Name	Final Top MD (ftKB)
NIO FT HAYS	7,010.0
Formation Name	Final Top MD (ftKB)
UPPER PIERRE AQUIFER-BASE PROD	1,424.9
Formation Name	Final Top MD (ftKB)
SHANNON-BASE PROD	5,047.4
Formation Name	Final Top MD (ftKB)
SHANNON-TOP PROD	4,886.5
Formation Name	Final Top MD (ftKB)
UPPER PIERRE AQUIFER-TOP PROD	502.9
Formation Name	Final Top MD (ftKB)
NIOBRARA-TOP PROD	6,771.9
Formation Name	Final Top MD (ftKB)
A SAND-BASE PROD	2,894.4
Formation Name	Final Top MD (ftKB)
NIO A CHALK	6,730.0

Surface Location (Congressional)								
Qtr 3	Qtr 4	Section	Twnshp	Twnsh...	Range	Rng E/...	Latitude (°)	Longitude (°)
NE	NE	14	4	N	65	W	40.3167097	-104.6255031

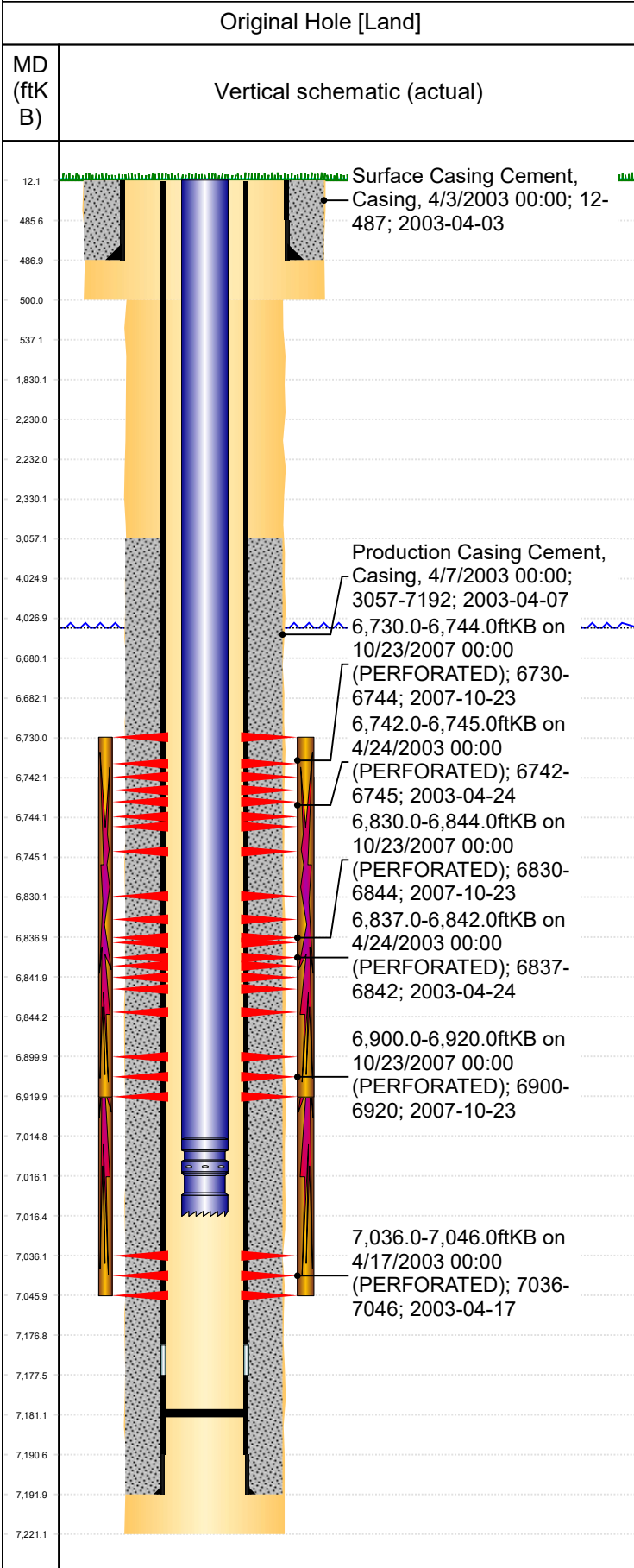
Wellbore Sections			
Section Des	Hole Size (in)	Top Depth (ftKB)	Btm Depth (ftKB)
SURFACE	12 1/4	12.0	500.0
PRODUCTION	7 7/8	500.0	7,221.0

Casing Strings						
Csg Des	Run Date	OD (in)	Wt/Len (lb/ft)	Grade	Top Depth (MD) (ftKB)	Set Depth (MD) (ftKB)
Surface	4/3/2003	8 5/8	24.00		12	487



PA Wellbore For State - Vertical

Well Name: BOHOA 1-14



Casing Strings							
Csg Des	Run Date	OD (in)	Wt/Len (lb/ft)	Grade	Top Depth (MD) (ftKB)	Set Depth (MD) (ftKB)	
Production Casing	4/7/2003	4 1/2	11.60	I-80	12	7192	
Cement							
Des		Start Date	Top (ftKB)	Btn (ftKB)			
SURFACE CASING CEMENT		4/3/2003	12.0	487.0			
PRODUCTION CASING CEMENT		4/7/2003	3,057.0	7,192.0			
Stim/Frac Summary							
Min Top Depth (ftKB)				Max Btm Depth (ftKB)			
6,742.0				7,046.0			
Min Top Depth (ftKB)				Max Btm Depth (ftKB)			
6,730.0				6,920.0			
Perforations							
Linked Zone	Date	Top Depth (ftKB)	Bottom Depth (ftKB)				
NIOBRARA, Original Hole	10/23/2007 00:00	6,730.0	6,744.0				
NIOBRARA, Original Hole	4/24/2003 00:00	6,742.0	6,745.0				
NIOBRARA, Original Hole	10/23/2007 00:00	6,830.0	6,844.0				
NIOBRARA, Original Hole	4/24/2003 00:00	6,837.0	6,842.0				
NIOBRARA, Original Hole	10/23/2007 00:00	6,900.0	6,920.0				
CODELL, Original Hole	4/17/2003 00:00	7,036.0	7,046.0				
Other In Hole							
Run Date	Des	Make	OD (in)	Top (ftKB)	Btn (ftKB)		
Logs							
Date	Type	Depth Top (MD) (ftKB)	Btn (ftKB)				
4/7/2003	COMPENSATED DENSITY	4,200	7,171.0				
4/7/2003	INDUCTION	488	7,191.0				
4/17/2003	CEMENT BOND	2,912	7,175.0				
Wellbore Plug Back Total Depths							
Date	Type	Com	PBTD (ftKB)				
4/7/2003	FLOAT COLLAR	TOP OF FLOAT COLLAR	7,178				
4/17/2003	FILL	DEPTH LOGGER ON CBL	7,181				