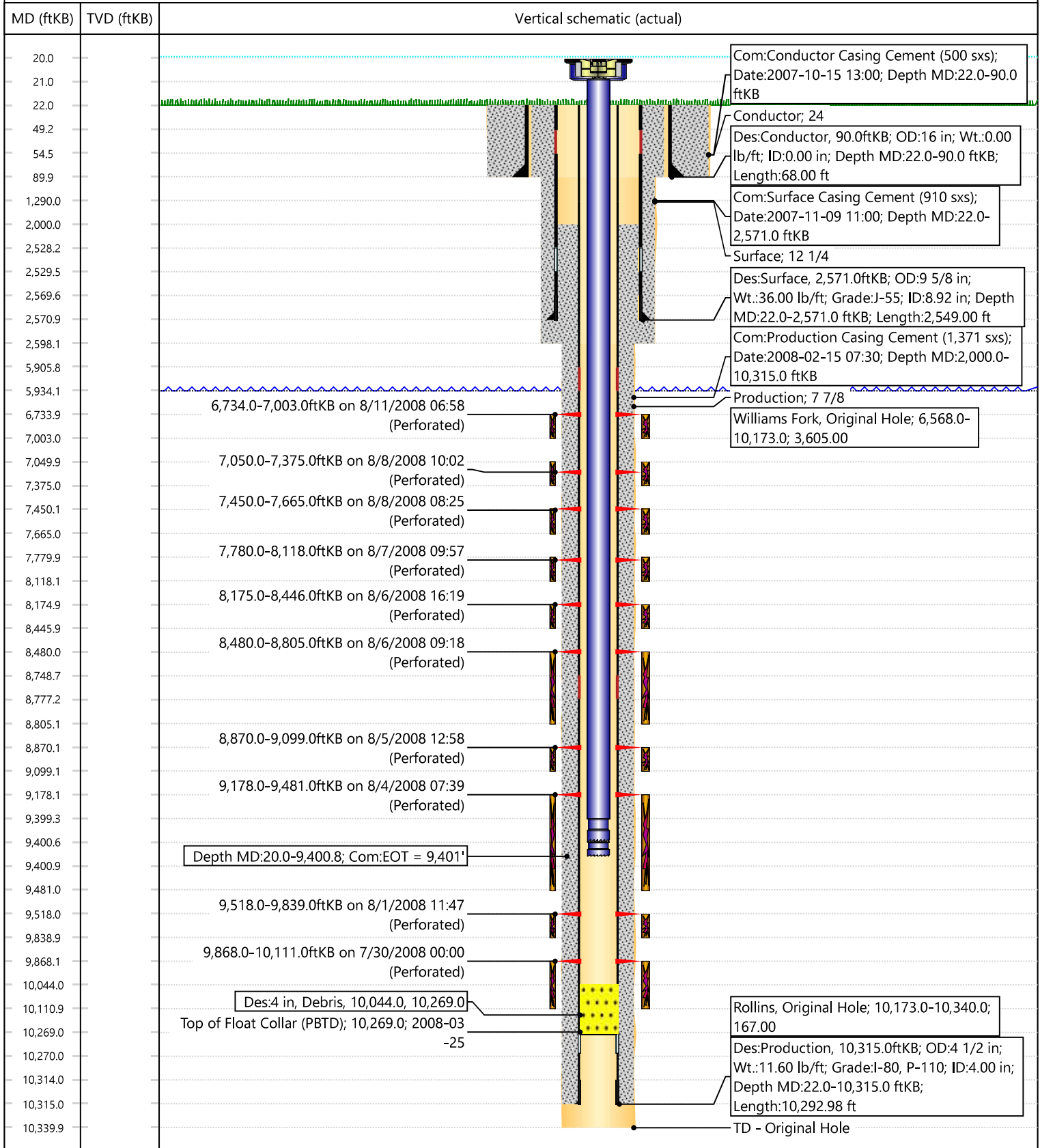


API/UWI 05045146610000	Related POD D31 595	State CO	County Garfield	Surface Legal Location NWNW S31 T5S R95W
Original Spud Date 11/5/2007 15:30	Total Depth (ftKB) 10,340.0	PBTD (All) Original Hole - 10,269.0	Original KB Elevation (ft) 5,949.00	Ground Elevation (ft) 5,927.00

Original Hole [Directional]



Com:Conductor Casing Cement (500 sxs);
Date:2007-10-15 13:00; Depth MD:22.0-90.0 ftKB

Conductor; 24
Des:Conductor, 90.0ftKB; OD:16 in; Wt.:0.00 lb/ft; ID:0.00 in; Depth MD:22.0-90.0 ftKB; Length:68.00 ft

Com:Surface Casing Cement (910 sxs);
Date:2007-11-09 11:00; Depth MD:22.0-2,571.0 ftKB
Surface; 12 1/4

Des:Surface, 2,571.0ftKB; OD:9 5/8 in; Wt.:36.00 lb/ft; Grade:J-55; ID:8.92 in; Depth MD:22.0-2,571.0 ftKB; Length:2,549.00 ft

Com:Production Casing Cement (1,371 sxs);
Date:2008-02-15 07:30; Depth MD:2,000.0-10,315.0 ftKB

Production; 7 7/8
Williams Fork, Original Hole; 6,568.0-10,173.0; 3,605.00

Rollins, Original Hole; 10,173.0-10,340.0; 167.00

Des:Production, 10,315.0ftKB; OD:4 1/2 in; Wt.:11.60 lb/ft; Grade:I-80, P-110; ID:4.00 in; Depth MD:22.0-10,315.0 ftKB; Length:10,292.98 ft

TD - Original Hole