



**RADIAL BOND LOG  
GAMMA RAY  
CCL / VDL / MAP**

Company **CHEVRON**  
Well **LOWER LATHAM PC G01-32D**  
Field **WATTENBERG 90750**  
County **WELD**  
State **CO.** Country **U.S.A.**

Location: **APL # : 05-123-33909**  
**SHL: 1919' FNL & 599' FEL NENE**  
**BHL: 2506' FSL & 41' FEL NESE**  
**SEC 2 TWP 4N RGE 65W**  
Permanent Datum **GL** Elevation **4692'**  
Log Measured From **KB 13'**  
Drilling Measured From **KB**

Company **CHEVRON**  
Well **LOWER LATHAM PC G01-32D**  
Field **WATTENBERG 90750**  
County **WELD**  
State **CO.** Country **U.S.A.**

Date **SEPTEMBER 17th, 2025**  
Run Number **1**  
Depth Driller **7342'**  
Depth Logger **3000'**  
Bottom Logged Interval **2995'**  
Top Log Interval **SURFACE**  
Open Hole Size **7-7-8"**  
Type Fluid **WATER**  
Density / Viscosity **8.3#**  
Max. Recorded Temp. **N/A**  
Estimated Cement Top **N/A**  
Time Well Ready **N/A**  
Time Logger on Bottom **N/A**  
Equipment Number **DSS HSR-10 001**  
Location **MILLIKEN, CO**  
Recorded By **T. VAN NEST**  
Witnessed By **MR. ERIC PETERSON**

Borehole Record				Tubing Record			
Run Number	Bit	From	To	Size	Weight	From	To


Casing Record	Size	Wgt/Ft	Top	Bottom
Surface String	8-5/8"	24# J55	SURFACE	741'
Production String	4-1/2"	11.6# M80	SURFACE	7332'
Prot. String				
Liner				

<<< Fold Here >>>

All interpretations are opinions based on inferences from electrical or other measurements and we cannot and do not guarantee the accuracy or correctness of any interpretation, and we shall not, except in the case of gross or willful negligence on our part, be liable or responsible for any loss, costs, damages, or expenses incurred or sustained by anyone resulting from any interpretation made by any of our officers, agents or employees. These interpretations are also subject to our general terms and conditions set out in our current Price Schedule.

**Comments**

**NO CORRELATION LOG AVAILBLE**

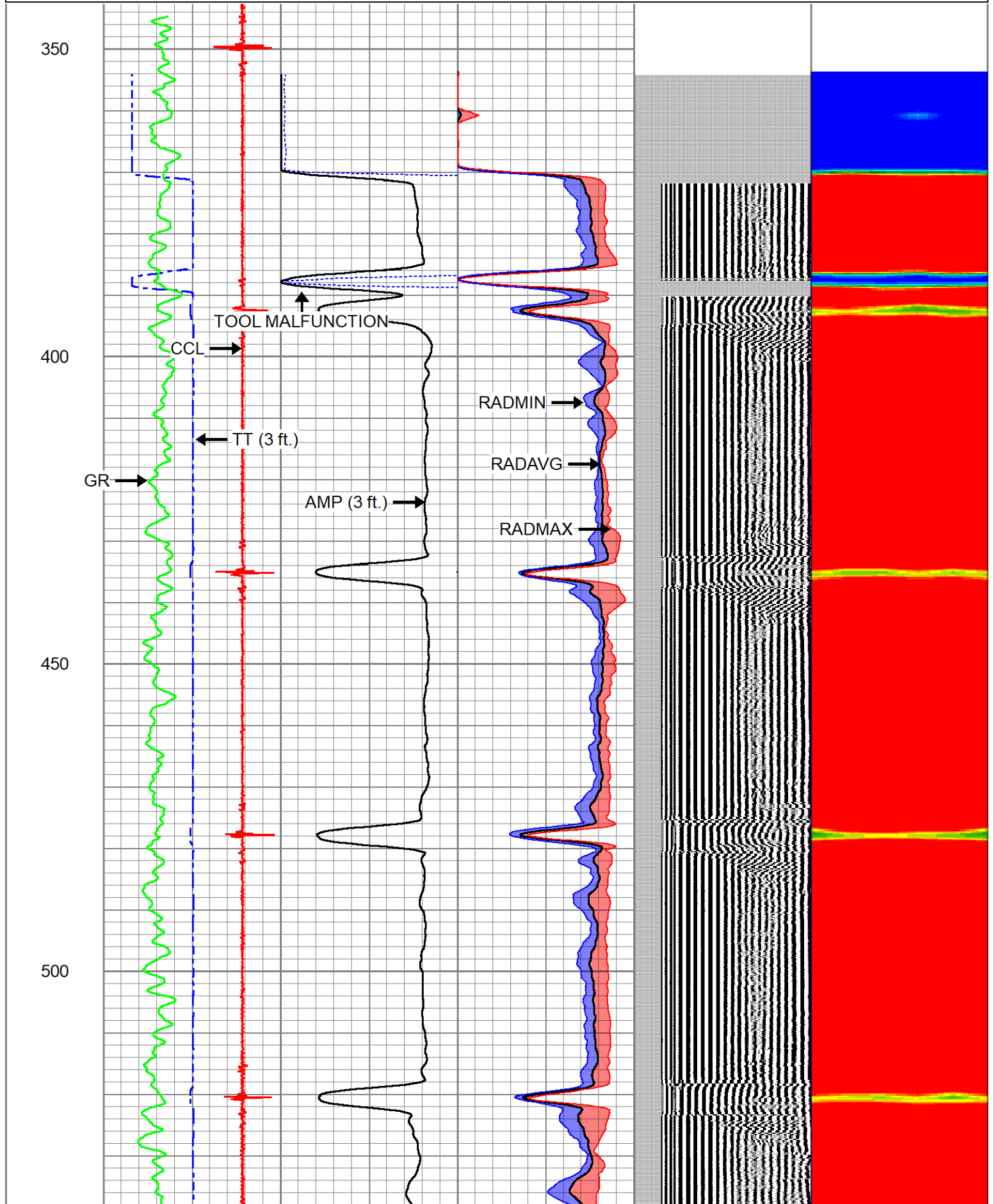
Sensor	Offset (ft)	Schematic	Description	Length (ft)	O.D. (in)	Weight (lb)
			Cable_Head-1_7/16 Titan 1 7/16" Cable Head	1.02	1.44	3.31

			PROBE-1.688_bow Bowspring centralizer for 1 11/16" Probe CBL	3.17	1.69	10.00
CCL	0.00					
GR	0.97					
			DSS_HSR_ELE-DSS_HSR_10_ELE (HSR10 0000) DSS 1 11/16" HSR Bond tool - Electronics Module	5.99	1.69	27.50
ROTV	5.24					
TCF	5.24					
THV	5.24					
INTEMP	5.24		CENT-DSS-RAC11-MID (RAC11MID-0000) DSS 1 11/16" MID Roller Arm Centralizer	2.61	1.69	16.00
PNEG	5.24					
PPOS	5.24					
GRHV	5.24					
WVFS6	9.77					
WVFS5	9.77					
WVFS4	9.77					
WVFS2	9.77					
WVFS1	9.77					
WVFCAL	10.27		DSS_HSR_SND-DSS_HSR_10_SND (HSR10 0000) DSS 1 11/16" HSR Bond tool - Sonde Module	8.26	1.69	41.50
WVF3FT	10.27					
WVF5FT	11.27					
TEMP	15.77					
WVFSYNC	16.11					
			PROBE-1.688_bow Bowspring centralizer for 1 11/16" Probe CBL	3.17	1.69	10.00

Dataset: eusd lower latham pc g01-32d.db: WATTENBERG/LOWER\_LATHAM\_PC\_G01-32D/DSS\_HSR-10\_RBL/RBL\_MAIN  
 Total length: 24.21 ft  
 Total weight: 108.31 lb  
 D.: 1.69 in

Database File eusd lower latham pc g01-32d.db  
 Dataset Pathname WATTENBERG/LOWER\_LATHAM\_PC\_G01-32D/DSS\_HSR-10\_RBL/RBL\_MAIN.3  
 Presentation Format ranger\_dss\_radial  
 Dataset Creation Wed Sep 17 17:12:03 2025  
 Charted by Depth in Foot scaled 1:240

TT (3 ft.)		AMP (3 ft.)		0	RADAVG	100	VDL (5 ft.)		1	RADIAL MAP	5
350	(usec)	120	0	(mV)	100	0	RADMAX	100	200	(usec)	1200
-20000 CCL 20000		3' Amplitude x5		0		RADMIN		0		100	
0	GR (GAPI)	150	0	(mV)	20						



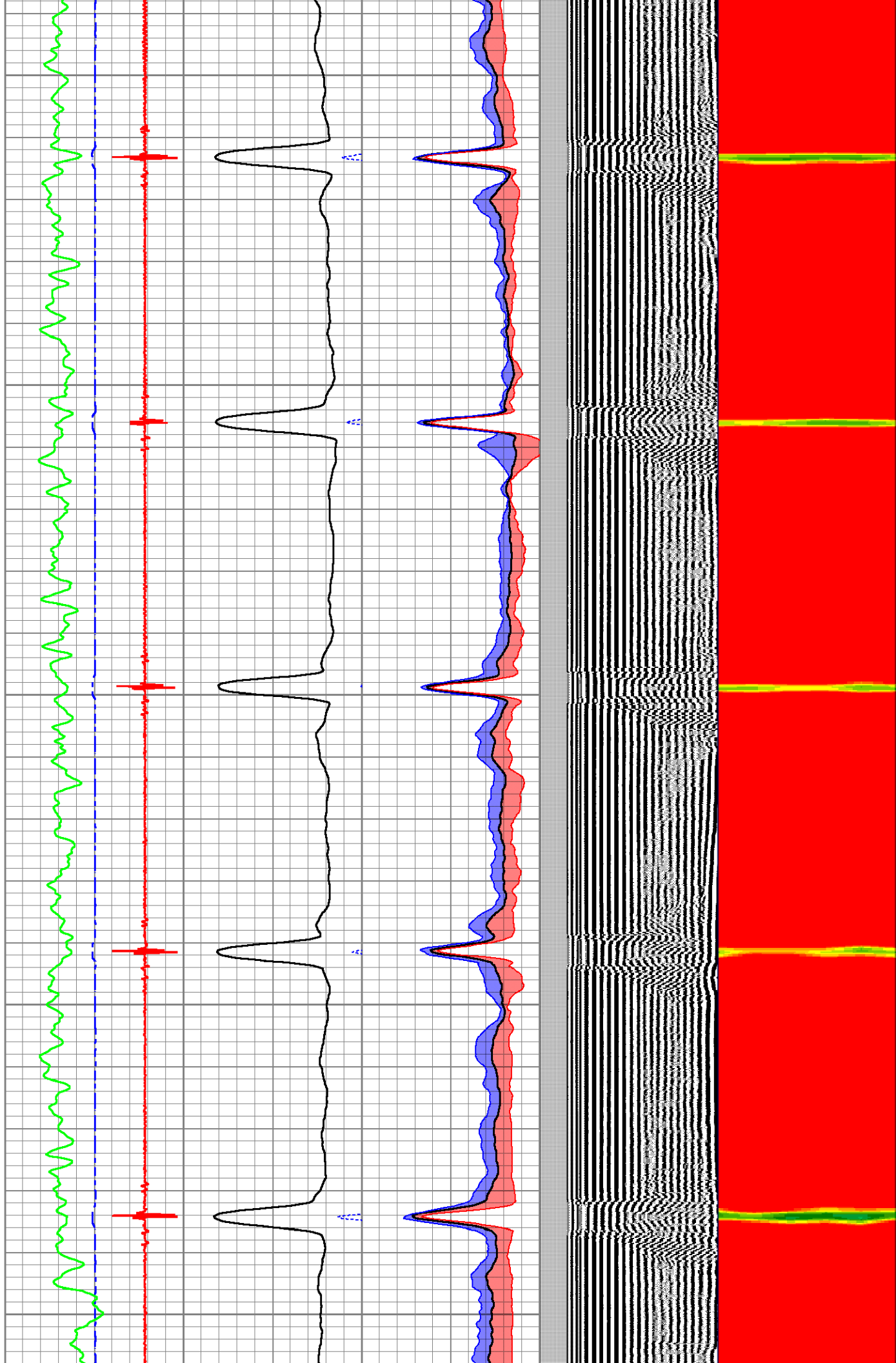
550

600

650

700

750

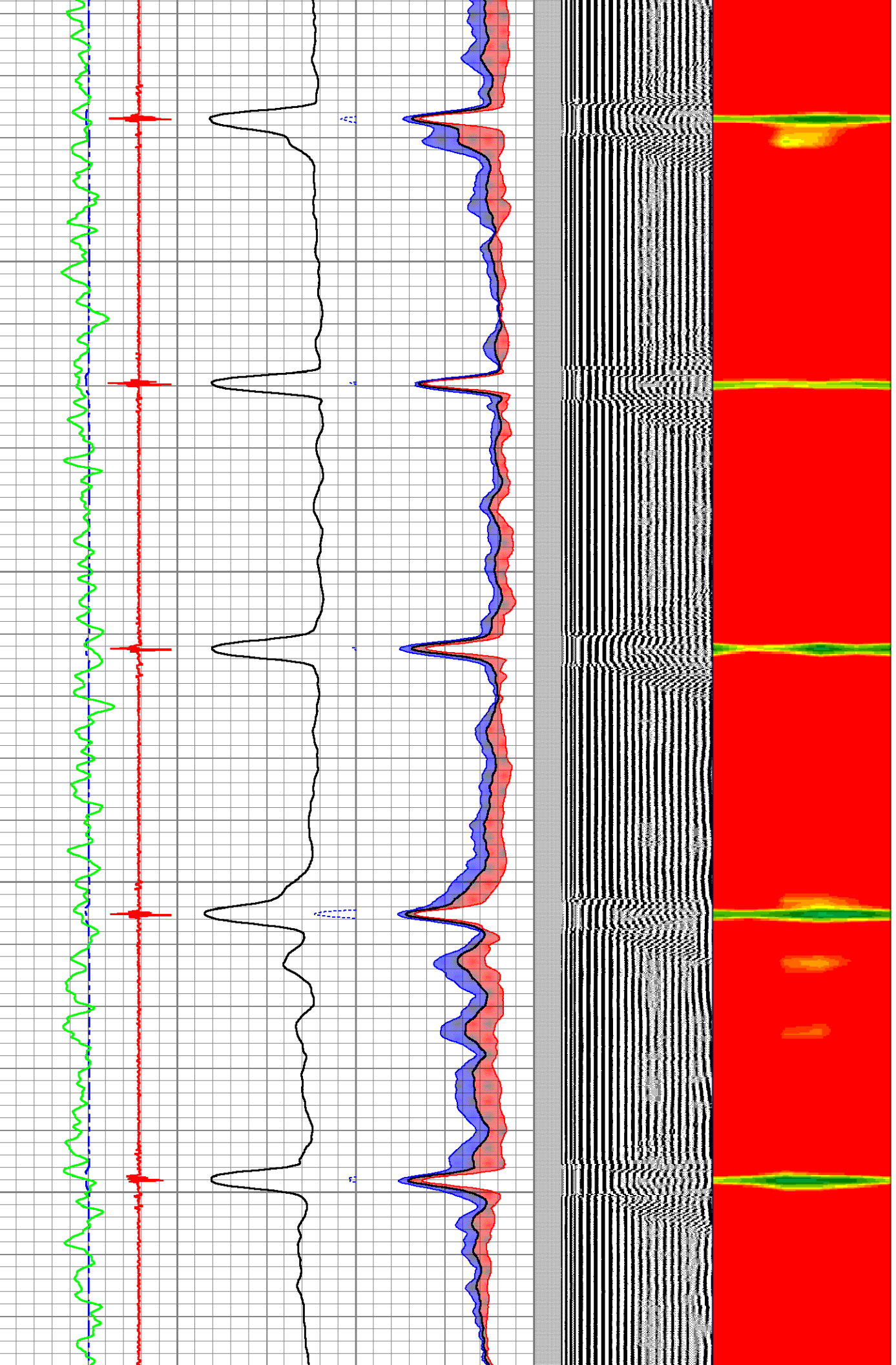


800

850

900

950

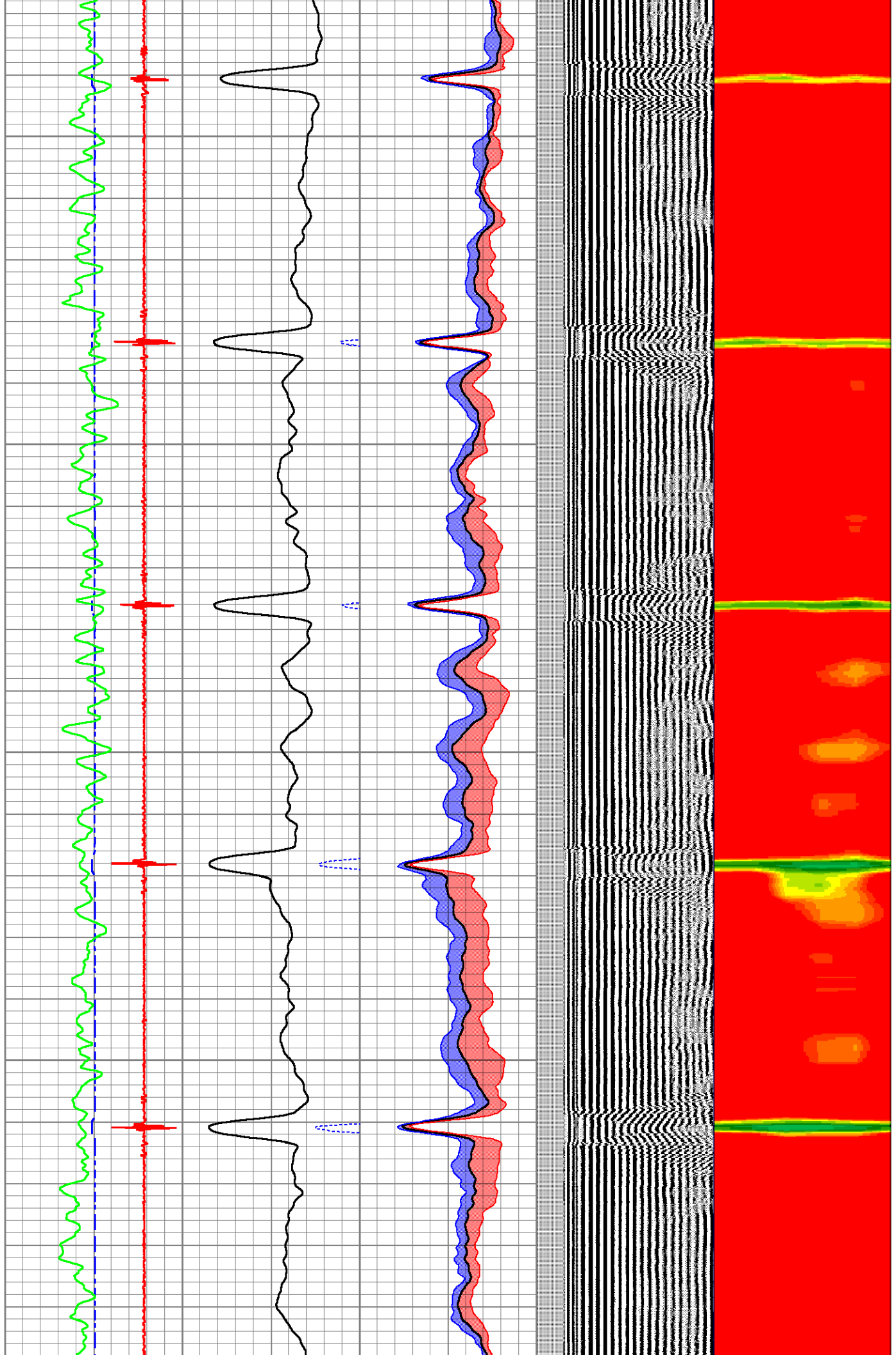


1000

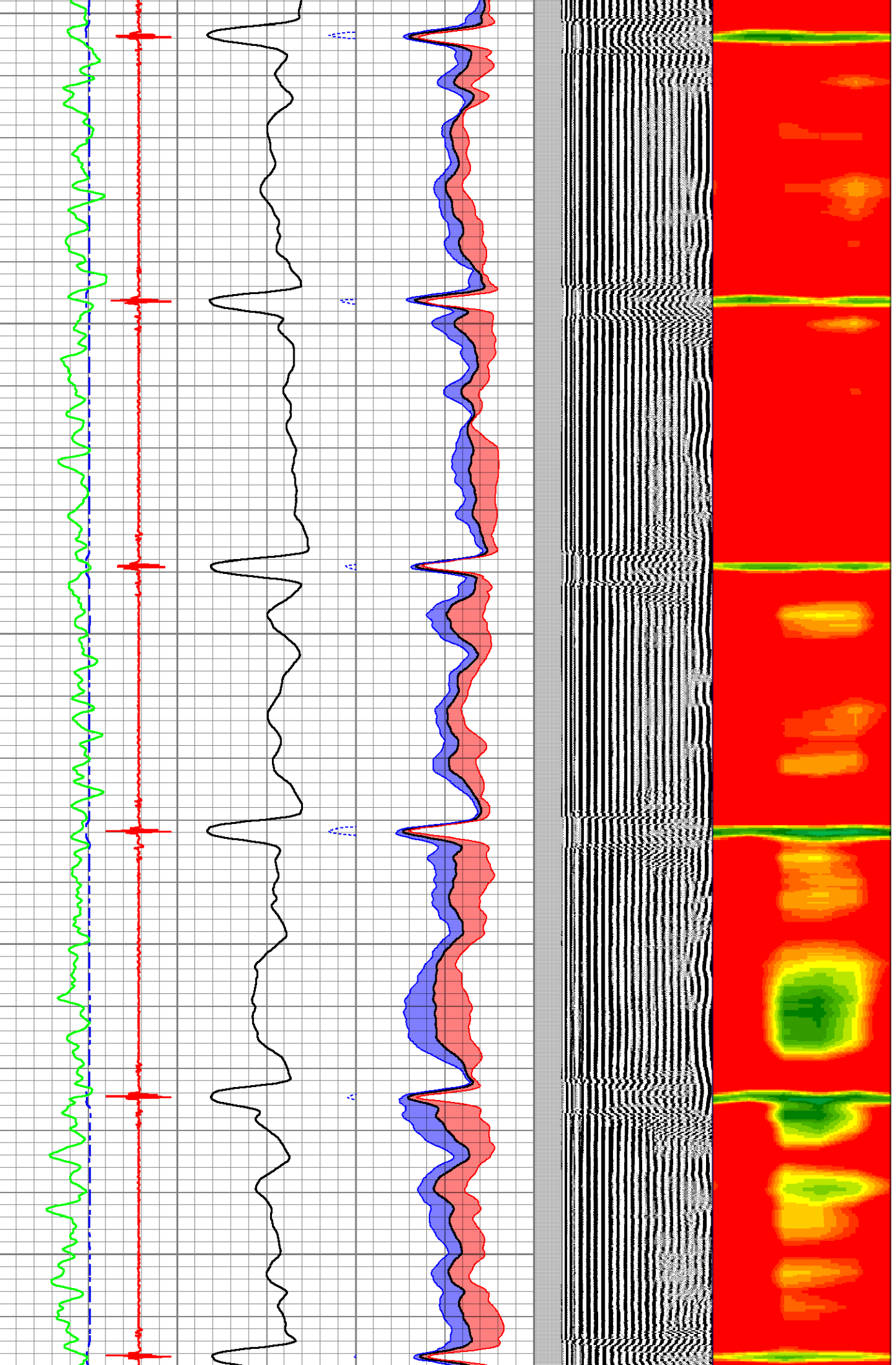
1050

1100

1150



1200  
1250  
1300  
1350  
1400

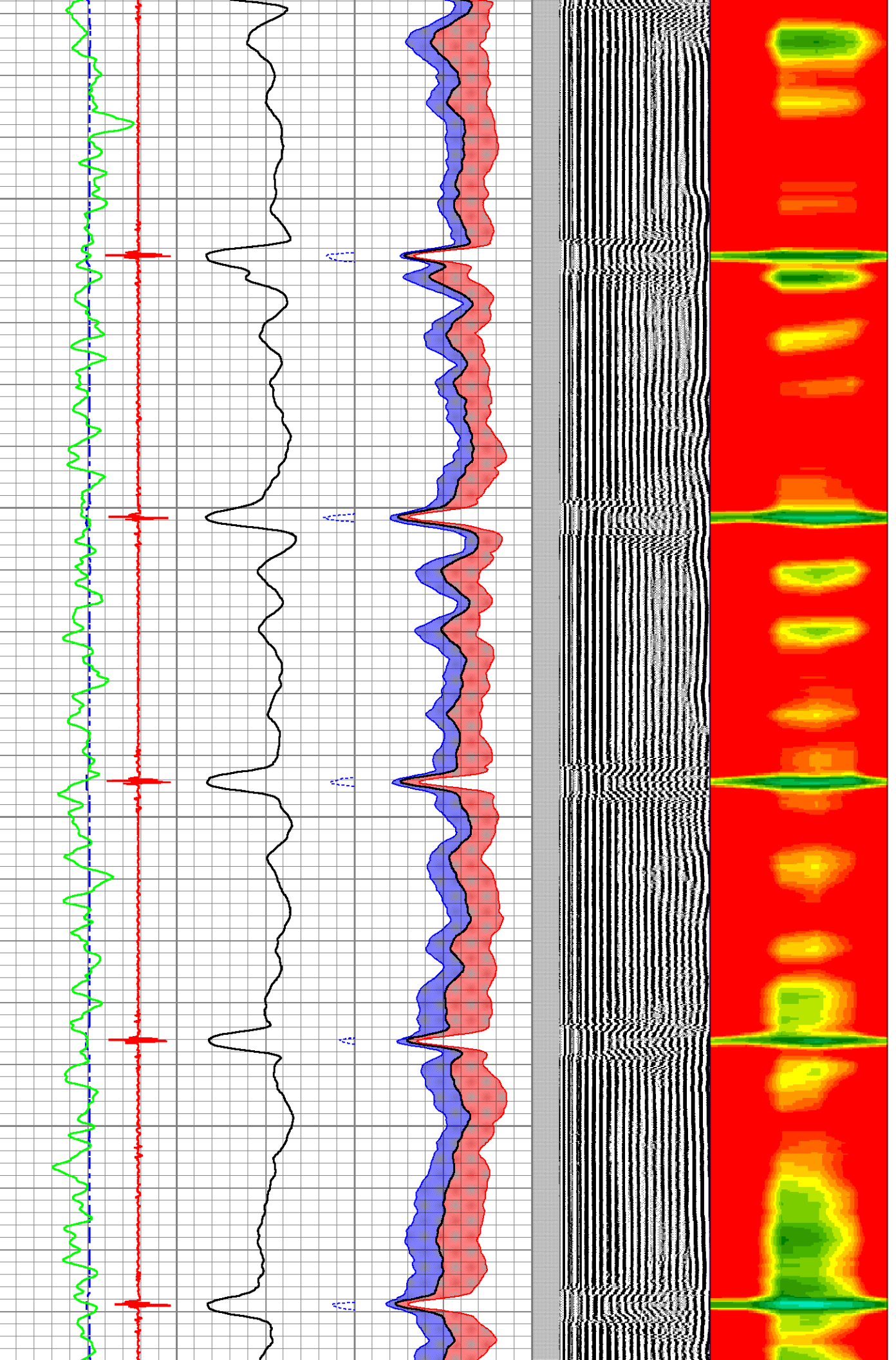


1450

1500

1550

1600



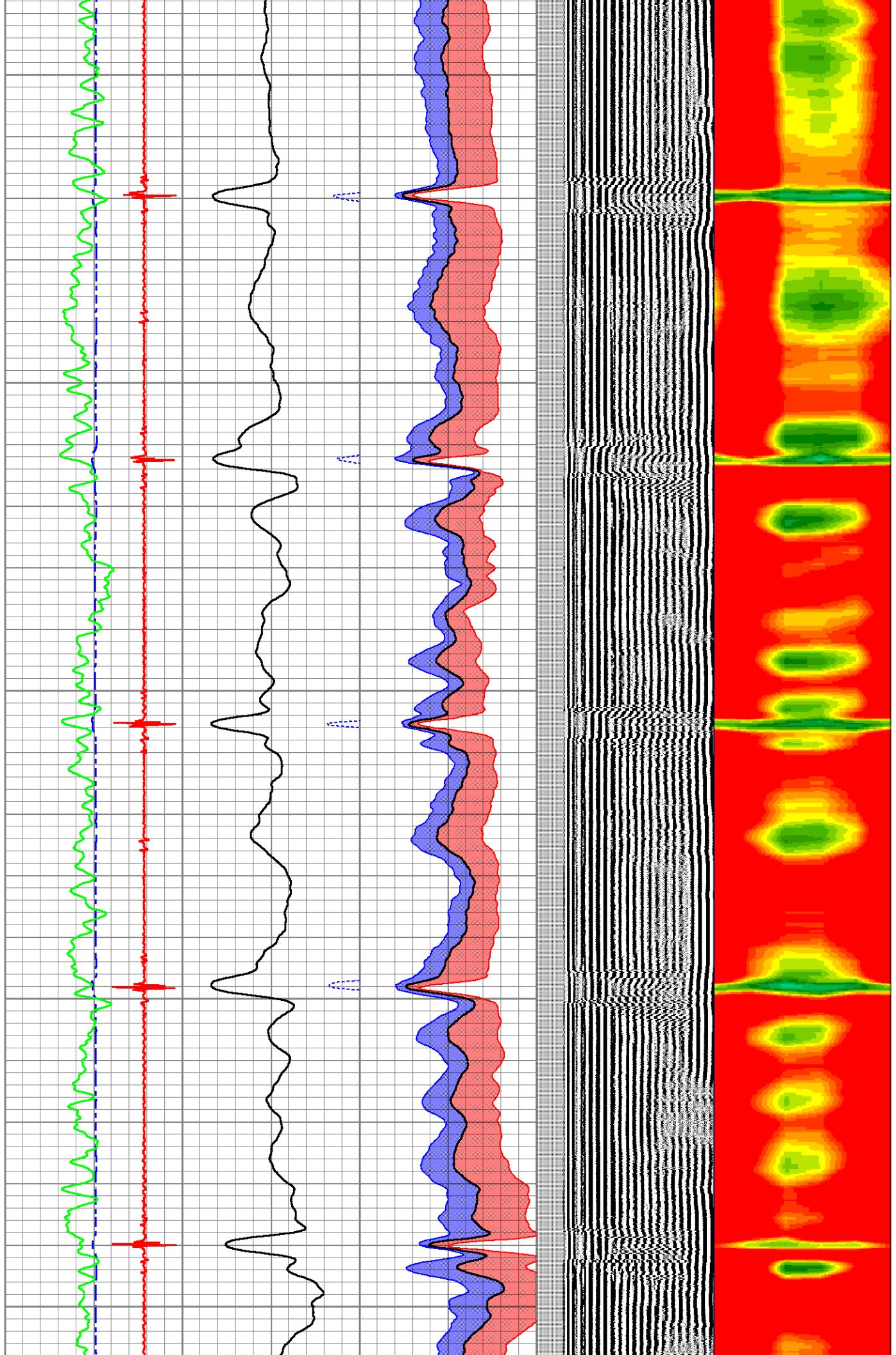
1650

1700

1750

1800

1850

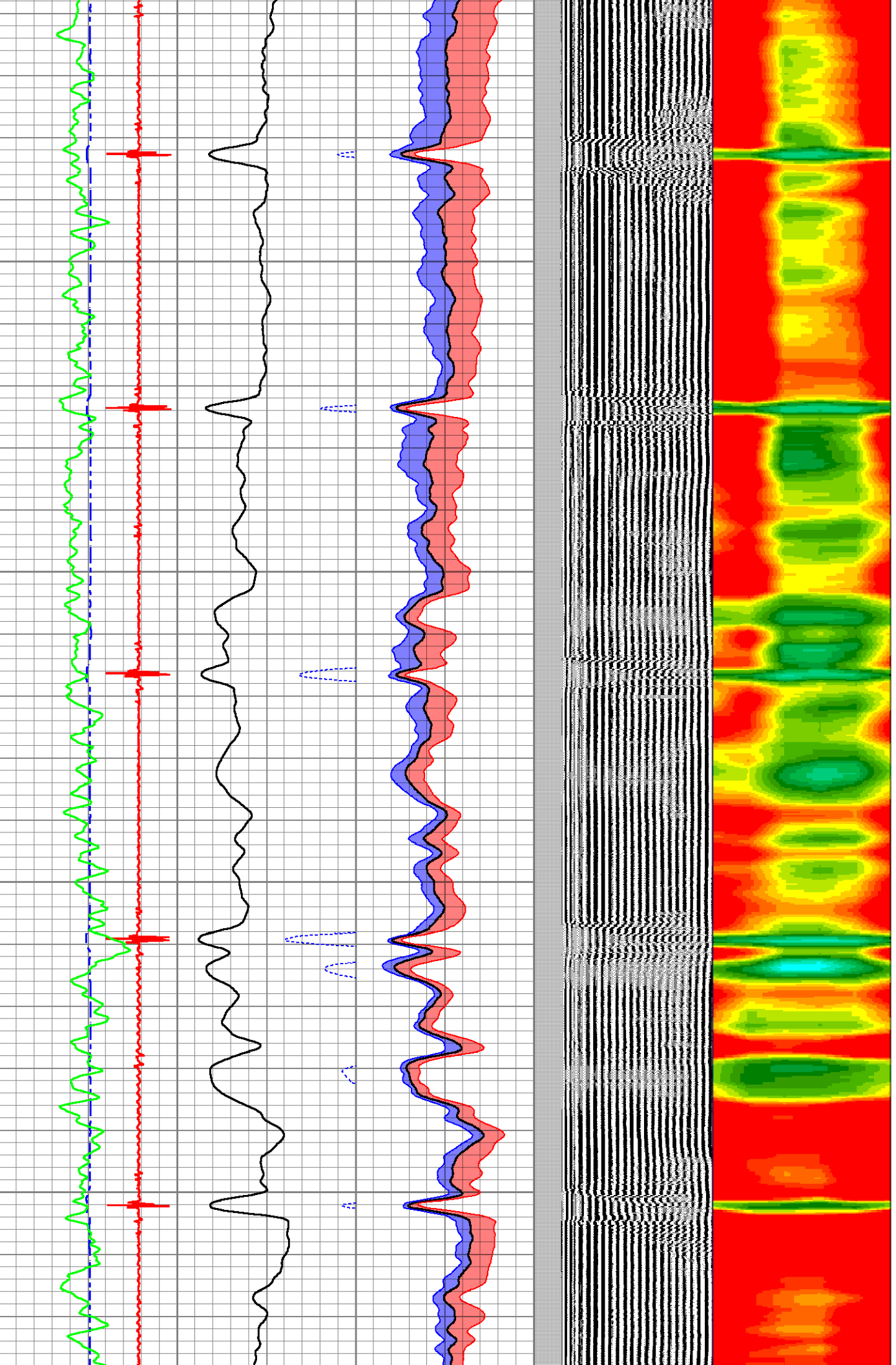


1900

1950

2000

2050

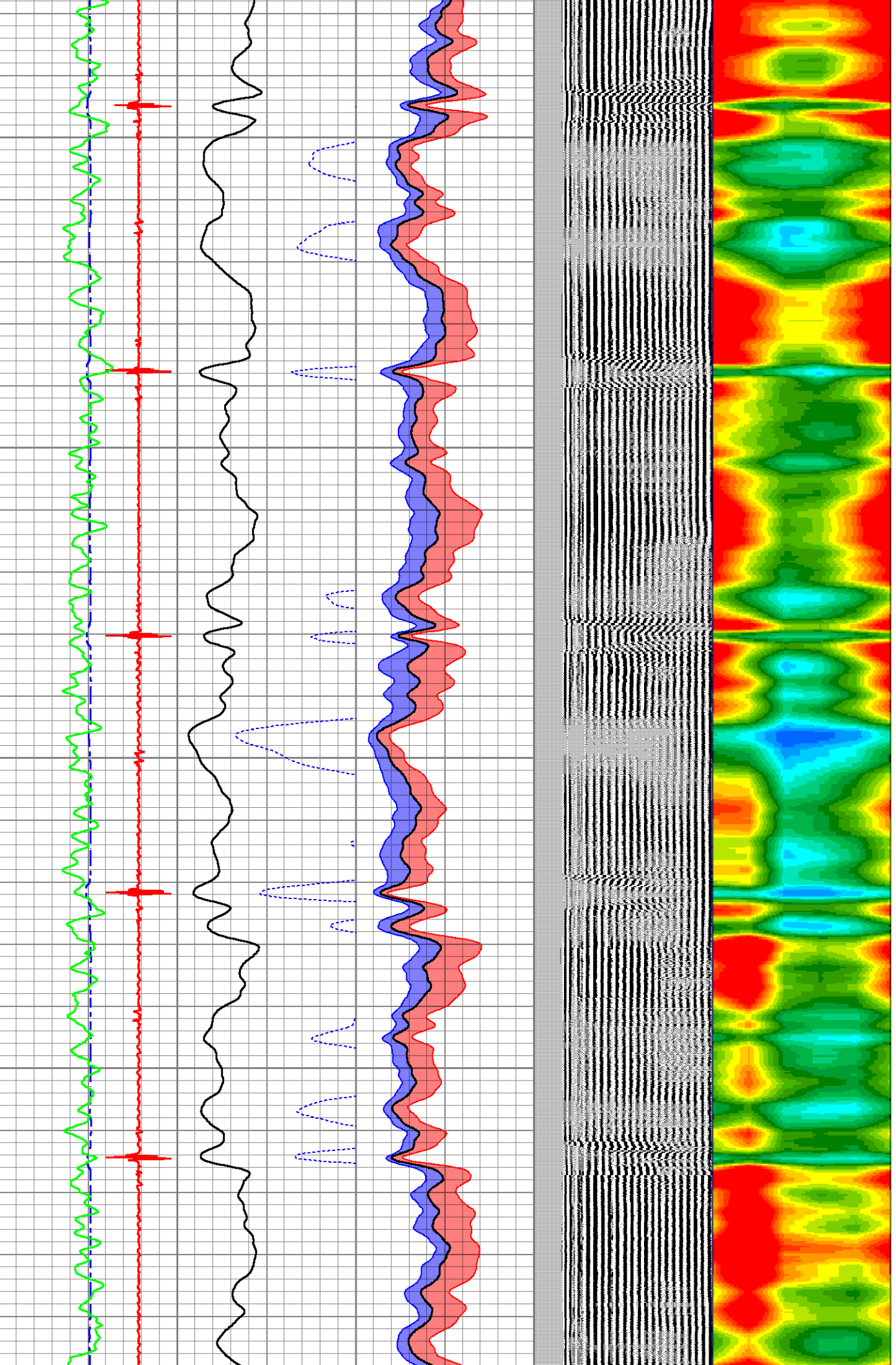


2100

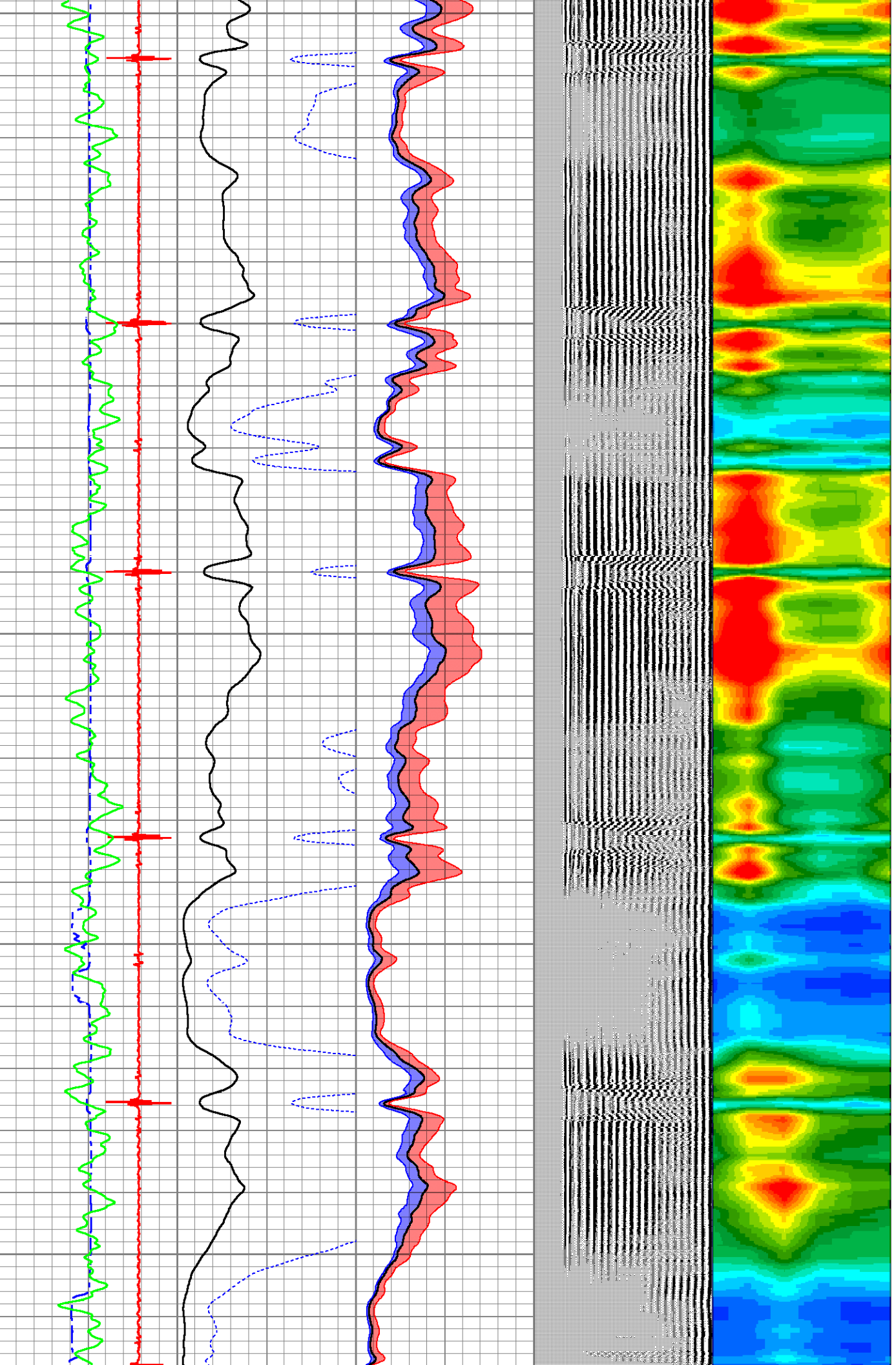
2150

2200

2250



2300  
2350  
2400  
2450  
2500

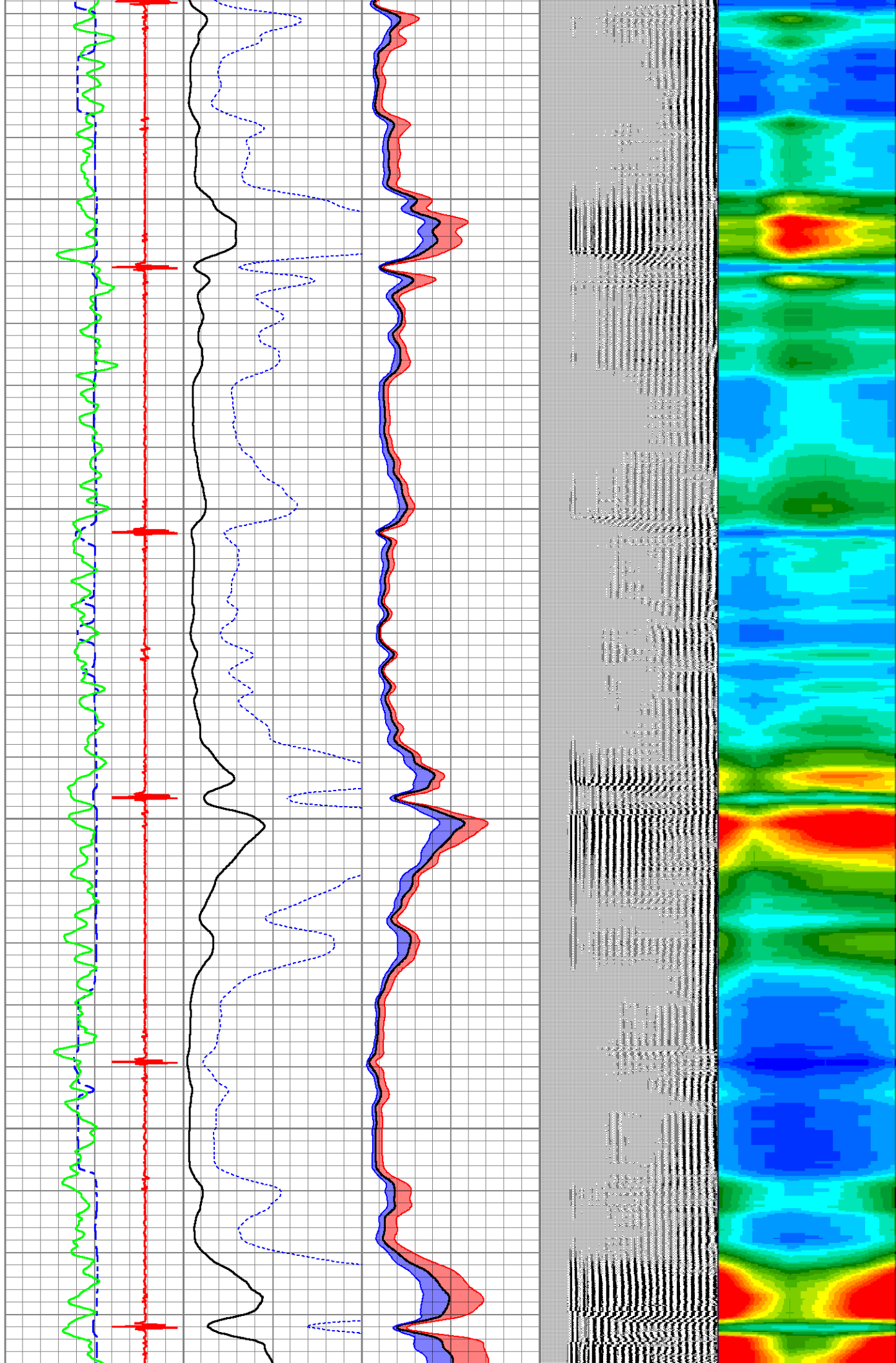


2550

2600

2650

2700



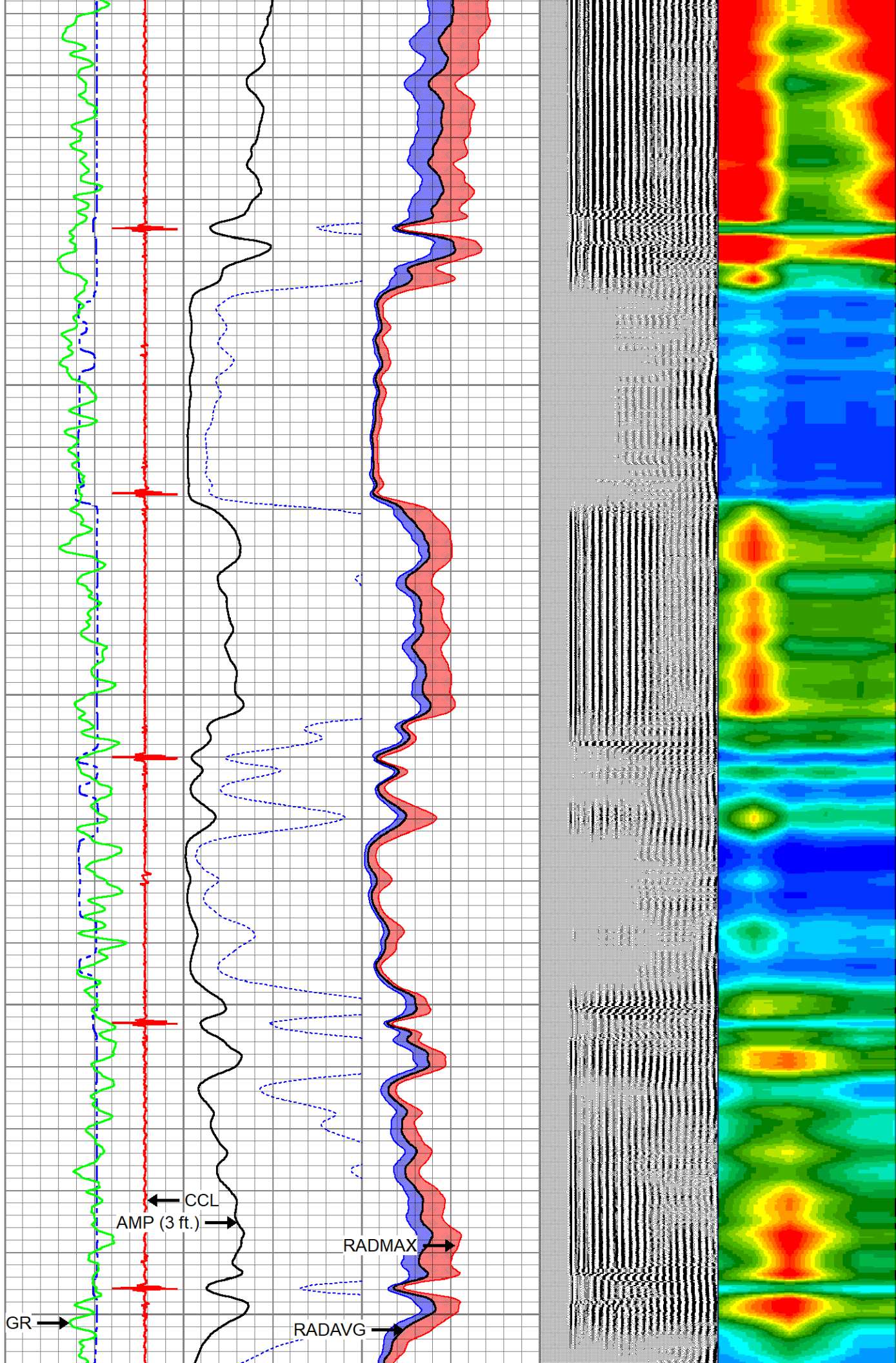
2750

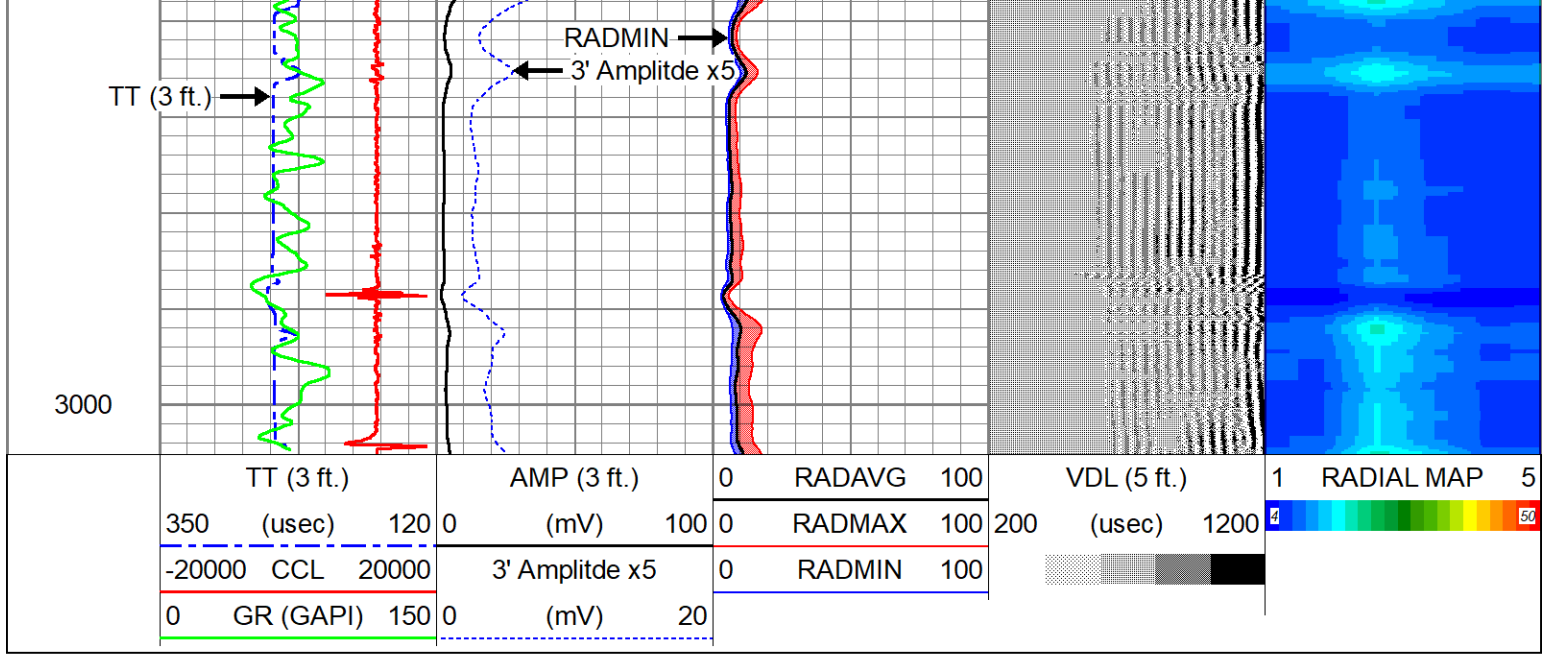
2800

2850

2900

2950





<b>Company</b>	CHEVRON	
<b>Well</b>	LOWER LATHAM PC G01-32D	
<b>Field</b>	WATTENBERG 90750	
<b>County</b>	WELD	
<b>State</b>	CO.	<b>Country</b> U.S.A.