

I hereby certify that the accompanying plat is an accurate representation of a correct survey showing the location of a proposed well. This location may be described as a point 660 feet north of the south line and 1980 feet east of the west line of Section 24, T10N, R45W of the 6th P.M., all in Sedgwick County, Colorado.

The surface elevation at this point is 3811 feet above mean sea level.

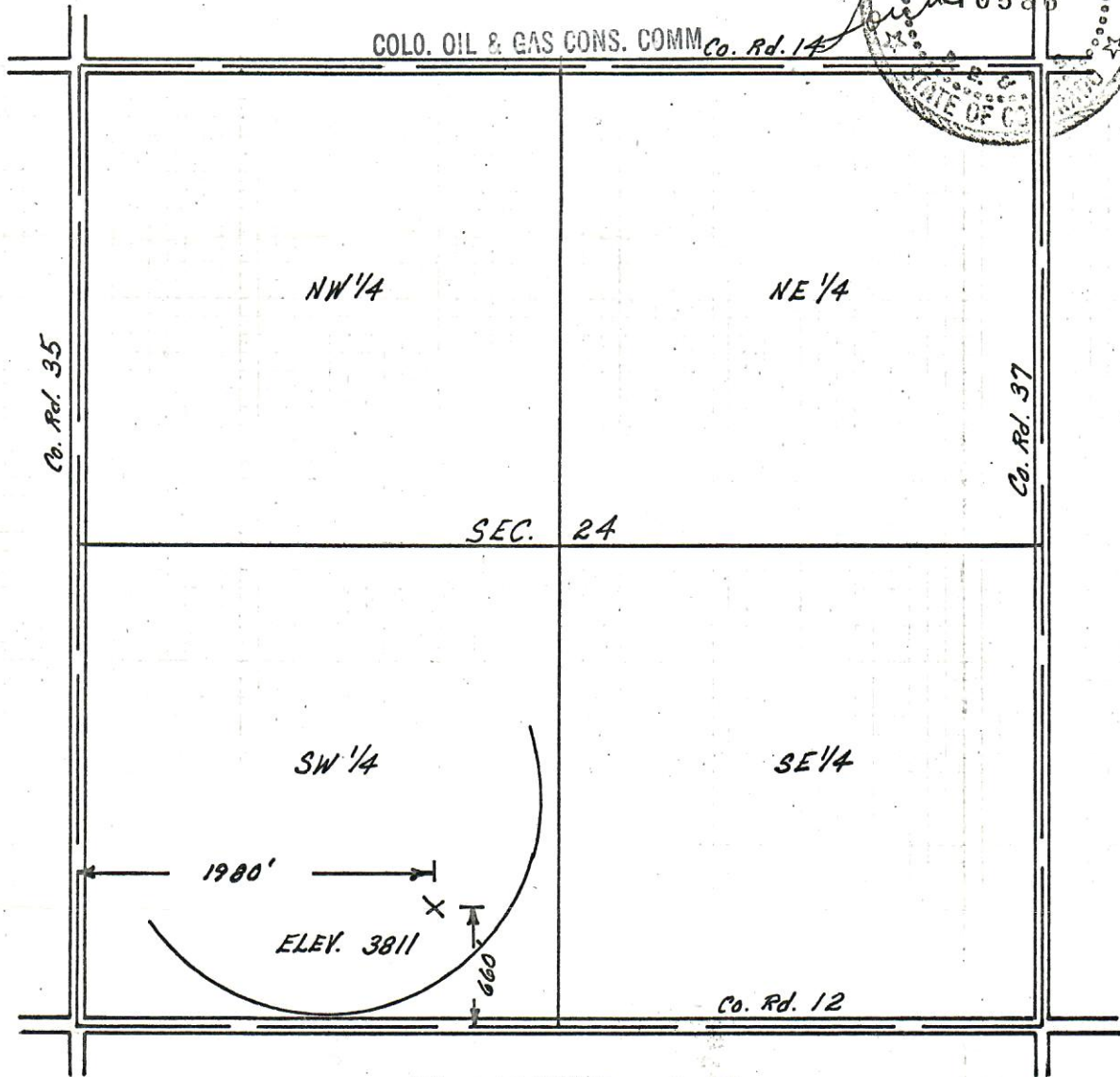
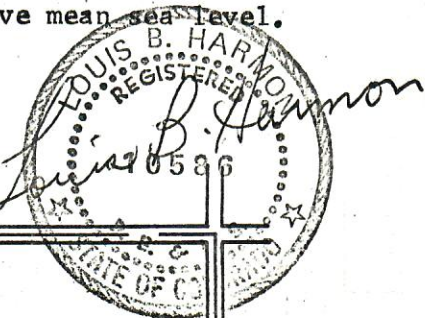


00273449

RECEIVED

DEC 4 1979

COLO. OIL & GAS CONS. COMM. Co. Rd. 14



X SURVEYED POINT

HARMON
ENGINEERING
SERVICES

RENQUIST 1-24 SW 1/4 SEC. 24,
T10N, R45W

ANDERSON PETROLEUM 27 NOVEMBER 1979

RS SEDGWICK COUNTY, COLORADO