

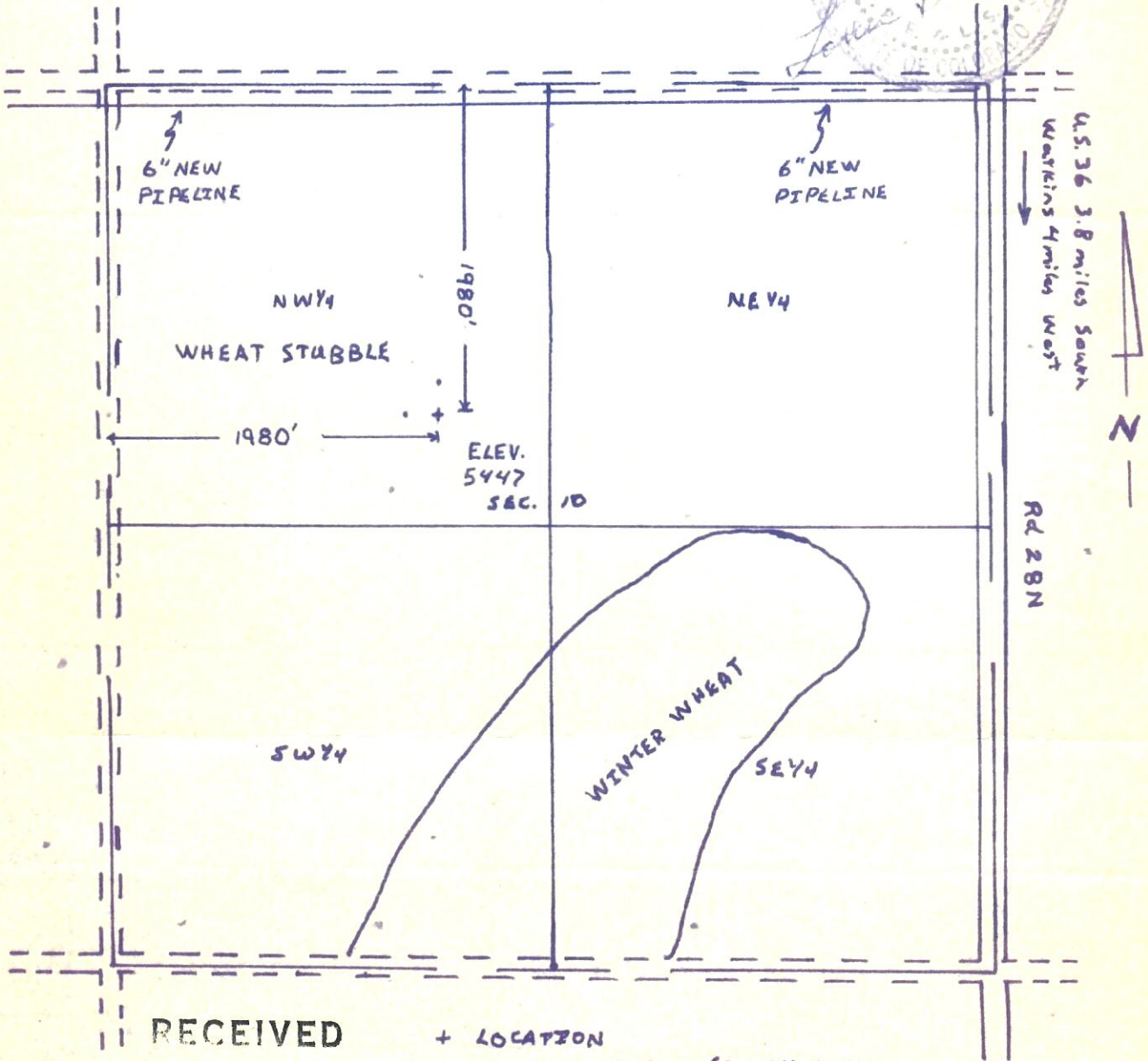


00417415

82-456 R

I hereby certify that the accompanying plat is an accurate representation of a correct survey showing the location of a proposed well. This location may be described as a point 1980 feet south of the north line and 1980 feet east of the west line of Section 10, T3S, R64W of the 6th PM, Adams County, Colorado.

The surface elevation at this point is 5447 feet above sea level.



RECEIVED

APR 21 1982

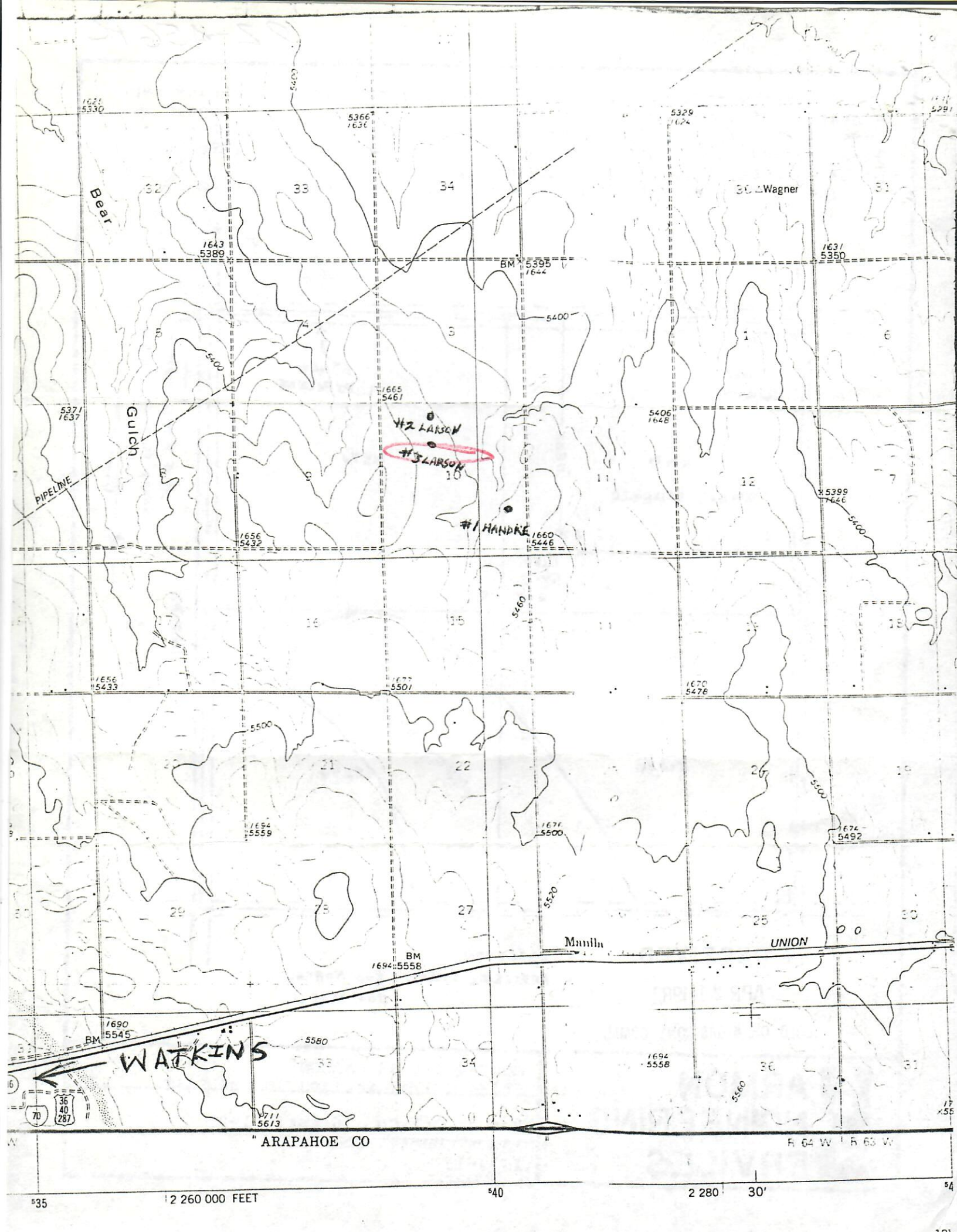
COLO. OIL & GAS CONS. COMM.

- + LOCATION
- REFERENCE STAKES (200' NORTH, 200' WEST)

HARMON
ENGINEERING
SERVICES

MORGAN OIL #3 LARSON
SE1/4 NW1/4, Section 10 T3S R64W

Morgan Oil Co. 16 April 1982
Adams County, Colorado
1057-10



Bear

Guich

Wagner

PIPELINE

Mantle

UNION

WATKINS

ARAPAHOE CO

R 64 W R 63 W

35

2 260 000 FEET

40

2 280

30'

54