

QB is requesting to abandon-in-place portions of several lines:

24903 - 34-44 WATER LINE, and 24759 - YCF 34-44-1 4" GAS LINE TO GATHERING
--

24758 - 2-22-1 GAS LINE TO GATHERING, and 24898 - 4" PWDD LINE FROM YCF 2-22-2
--

These lines are a part of the following systems:

- Water - YCF Water System (482203)
- Gas - North Parachute Gas System (470610)

The lines will be mostly abandoned in place, with on-location portions being removed. The pipeline to be AIP will be pressure tested, integrity verified, evacuated and abandoned in place. This pipeline is located on BLM surface.

Any lines abandoned in place will be evacuated, valves and risers removed, and the ends capped in accordance with the 1105 rules.



Image 1: Lines at YCF 2-22-1 requested for abandonment in place.

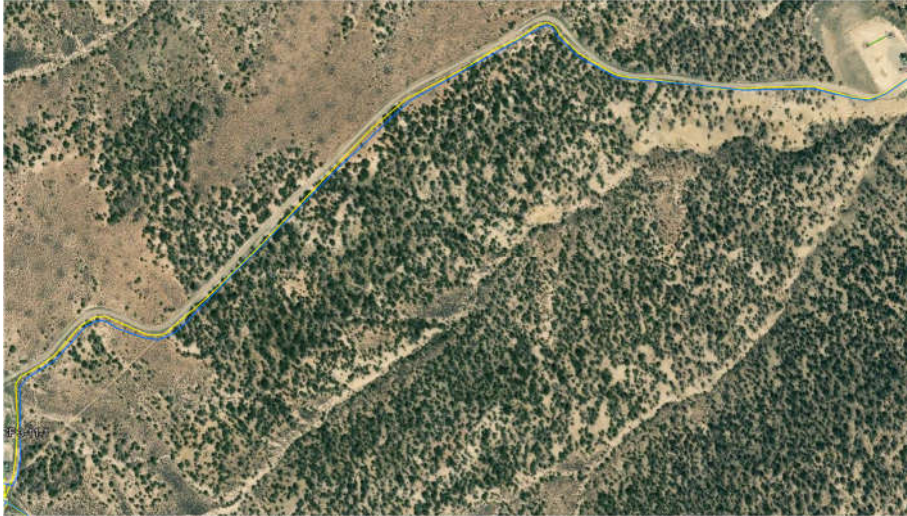


Image 2: Lines at YCF 34-44-1 requested for abandonment in place.

The request is based on the following reasons set forth in 1105.d.2.

B. The line is subject to the jurisdiction of the Federal Government and the relevant agency directs abandonment in place.

D. Removal of the flowline or crude oil transfer line would cause significant damage to natural resources, including wildlife resources, topsoil, or vegetation;

- A. The Right-of-way is already partially reclaimed from seeding after line install. Removal of the line segment will cause significant impacts to already revegetated areas and further damage to top soil and established wildlife.

E. The flowline or crude oil transfer line is in a restricted surface occupancy area or sensitive wildlife habitat;

- A. The entirety of the line requested for AIP is within designated High Priority Habitat, per ECMC GIS online.

F. The flowline or crude oil transfer line or a segment of the line crosses or is within 30 feet of a public road, railroad, bike path, public right of way, utility corridor, or active utility or pipeline crossing;

A. For safety reasons, it is best to abandon in place. The lines run parallel to a roadway and end at an active pad location.

Image 3: The areas to be assessed are clearly in a designated High Priority Habitat, as shown in this map image from the COGCC GIS Online Map Web Viewer.

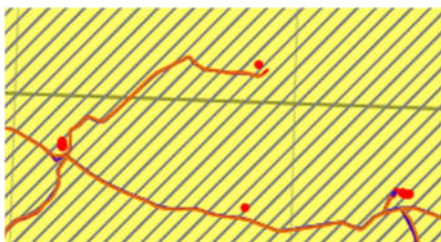


Image 4: Pipelines in question located on Federal surface, as shown in this map image from the COGCC GIS Online Map Web Viewer.

