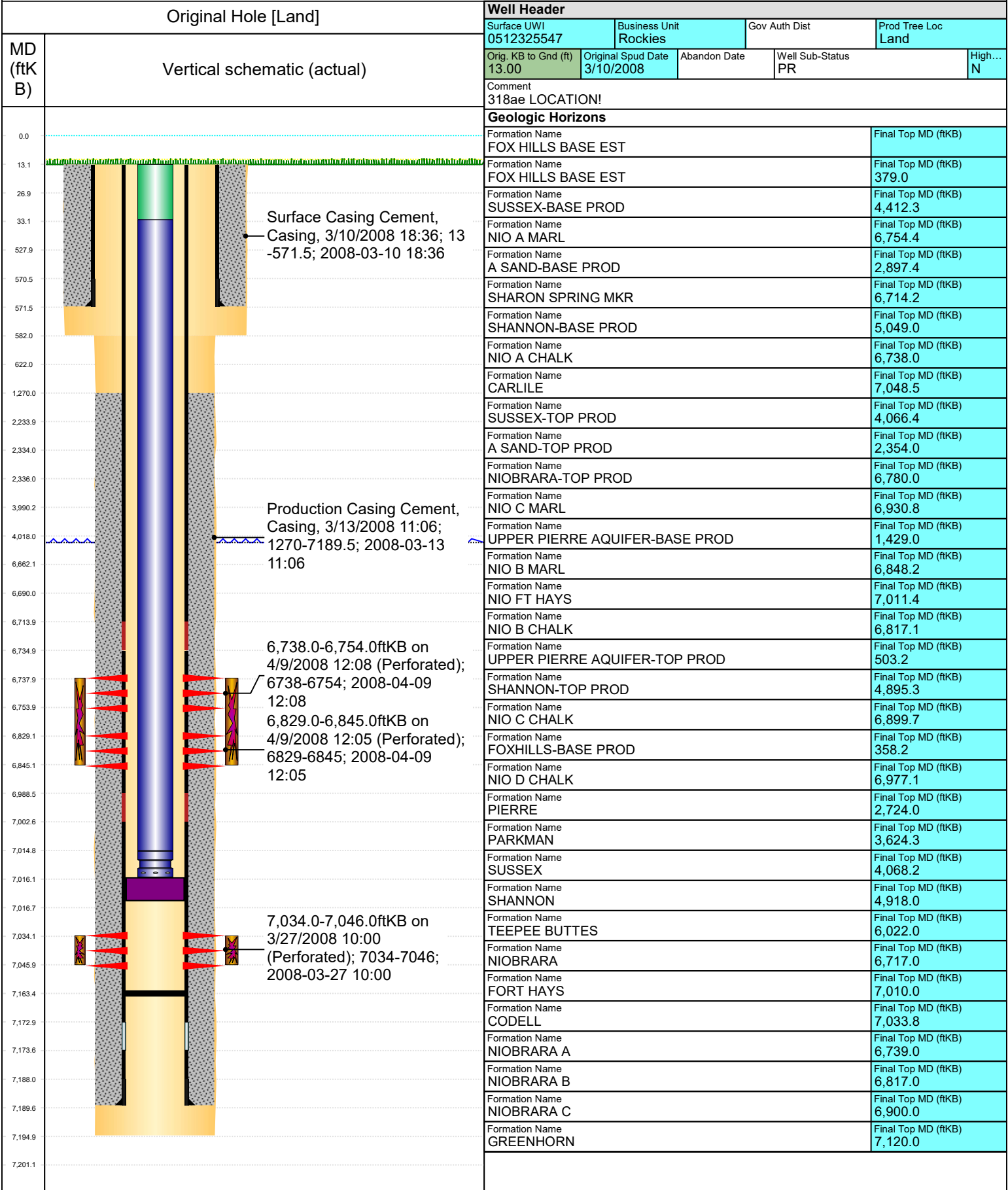




# PA Wellbore For State - Vertical

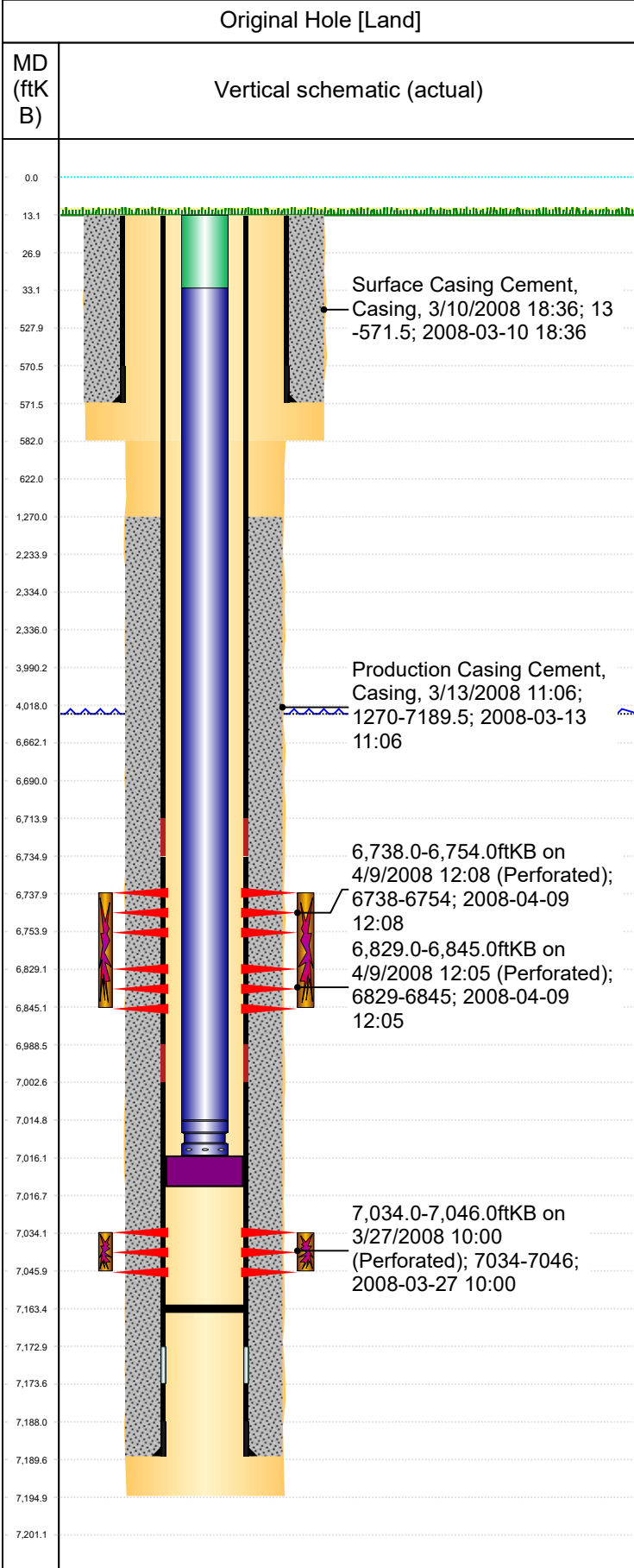
Well Name: SHELTON G23-28





# PA Wellbore For State - Vertical

Well Name: SHELTON G23-28



Surface Location (Congressional)									
Qtr 3 NW	Qtr 4 NE	Section 23	Twnshp 4	Twnsh... N	Range 65	Rng E/W	Latitude (°) 40.304730894	Longitude (°) -104.630119525	
Wellbore Sections									
Section Des		Hole Size (in)		Top Depth (ftKB)		Btm Depth (ftKB)			
SURFACE		12 1/4		13.0		582.0			
PRODUCTION		7 7/8		582.0		7,195.0			
Casing Strings									
Csg Des	Run Date	OD (in)	Wt/Len (lb/ft)	Grade	Top Depth (MD) (ftKB)	Set Depth (MD) (ftKB)			
Surface	3/10/2008	8 5/8	24.00	J-55	13	571.5			
Production Casing	3/13/2008	4 1/2	11.60	M-80	0	7189.5			
Cement									
Des		Start Date	Top (ftKB)	Btm (ftKB)					
SURFACE CASING CEMENT		3/10/2008	13.0	571.5					
PRODUCTION CASING CEMENT		3/13/2008	1,270.0	7,189.5					
Stim/Frac Summary									
Min Top Depth (ftKB) 6,738.0					Max Btm Depth (ftKB) 7,046.0				
Perforations									
Linked Zone	Date	Top Depth (ftKB)	Bottom Depth (ftKB)						
NIOBRARA, Original Hole	4/9/2008 12:08	6,738.0	6,754.0						
NIOBRARA, Original Hole	4/9/2008 12:05	6,829.0	6,845.0						
CODELL, Original Hole	3/27/2008 10:00	7,034.0	7,046.0						
Other In Hole									
Run Date	Des	Make	OD (in)	Top (ftKB)	Btm (ftKB)				
Logs									
Date	Type	Depth Top (MD) (ftKB)	Btm (ftKB)						
2/13/2008	Caliper/Comp. Density/Neutron/GR/SP/ML	2,640	7,177.0						
2/13/2008	DIL/GR/SP/Caliper	572	7,197.0						
3/24/2008	CBL/CCL/GR	1,180	7,144.0						
Wellbore Plug Back Total Depths									
Date	Type	Com	PBTD (ftKB)						
3/13/2008	FLOAT COLLAR	TOP PLUG	7,173						
7/23/2008	PLUG	REMAINDER OF CAST IRON FLOW THRU PLUG.	7,163						