



PA Wellbore For State - Vertical

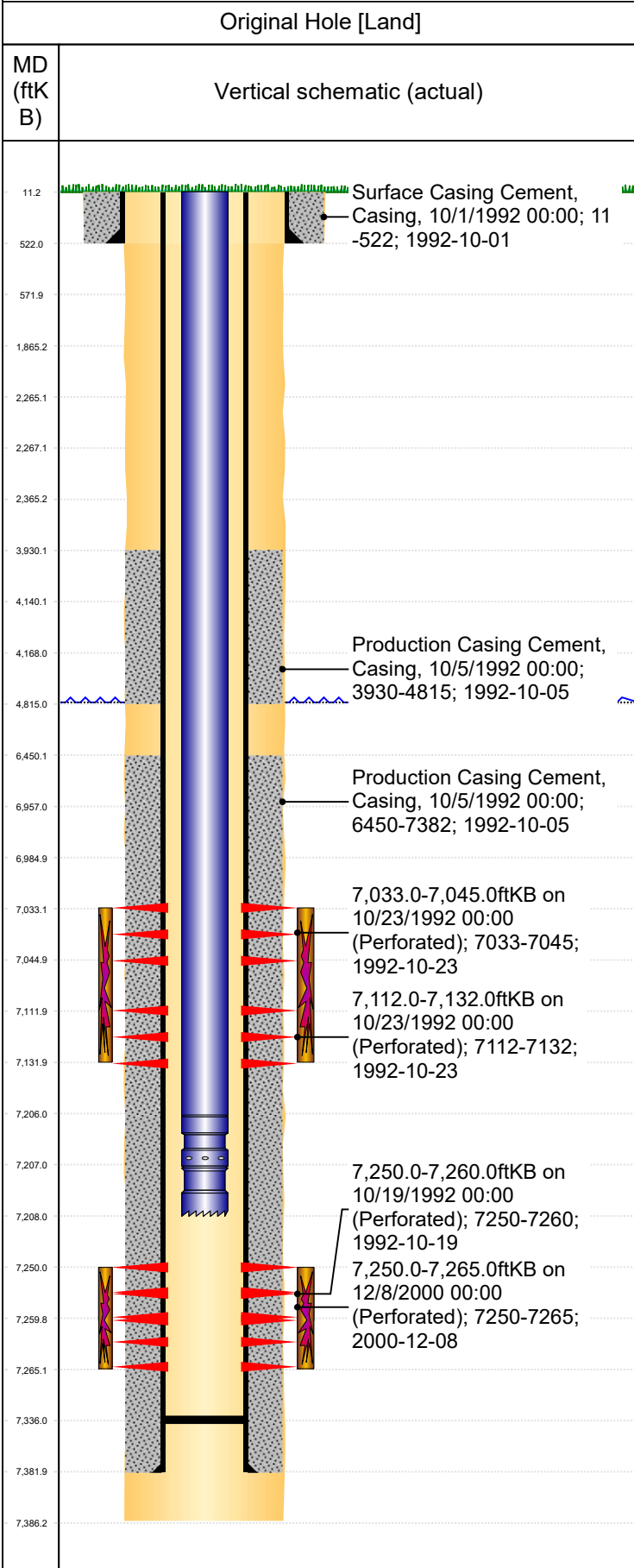
Well Name: SCHMIDT 25-10F

Original Hole [Land]		Well Header	
MD (ftK B)	Vertical schematic (actual)	Surface UWI 0512316243	Business Unit Rockies
		Gov Auth Dist	Prod Tree Loc Land
		Orig. KB to Gnd (ft) 11.00	Original Spud Date 10/1/1992
		Abandon Date	Well Sub-Status PR
		High... N	
		Comment	
		Geologic Horizons	
11.2	Surface Casing Cement, Casing, 10/1/1992 00:00; 11-522; 1992-10-01	Formation Name FOX HILLS BASE EST	Final Top MD (ftKB)
522.0		Formation Name FOX HILLS BASE EST	Final Top MD (ftKB)
571.9		Formation Name FOX HILLS BASE EST	Final Top MD (ftKB) 435.0
1,865.2		Formation Name A SAND-BASE PROD	Final Top MD (ftKB) 2,922.8
2,265.1		Formation Name FOXHILLS-BASE PROD	Final Top MD (ftKB) 390.5
2,267.1		Formation Name NIO B CHALK	Final Top MD (ftKB) 7,020.3
2,365.2		Formation Name A SAND-TOP PROD	Final Top MD (ftKB) 2,385.1
3,930.1		Formation Name NIO C MARL	Final Top MD (ftKB) 7,142.3
4,140.1		Formation Name SHANNON-TOP PROD	Final Top MD (ftKB) 4,885.3
4,168.0	Production Casing Cement, Casing, 10/5/1992 00:00; 3930-4815; 1992-10-05	Formation Name NIO D CHALK	Final Top MD (ftKB) 7,189.0
4,815.0		Formation Name INTRA SHARON SPGS MK	Final Top MD (ftKB) 6,947.8
6,450.1		Formation Name CARLILE	Final Top MD (ftKB) 7,266.2
6,957.0	Production Casing Cement, Casing, 10/5/1992 00:00; 6450-7382; 1992-10-05	Formation Name SUSSEX-BASE PROD	Final Top MD (ftKB) 4,507.5
6,984.9		Formation Name NIO C CHALK	Final Top MD (ftKB) 7,107.7
7,033.1		Formation Name NIO B MARL	Final Top MD (ftKB) 7,045.7
7,044.9	7,033.0-7,045.0ftKB on 10/23/1992 00:00 (Perforated); 7033-7045; 1992-10-23	Formation Name NIO A MARL	Final Top MD (ftKB) 6,961.9
7,111.9		Formation Name SUSSEX-TOP PROD	Final Top MD (ftKB) 4,215.6
7,131.9	7,112.0-7,132.0ftKB on 10/23/1992 00:00 (Perforated); 7112-7132; 1992-10-23	Formation Name UPPER PIERRE AQUIFER-BASE PROD	Final Top MD (ftKB) 1,431.9
7,206.0		Formation Name NIO FT HAYS	Final Top MD (ftKB) 7,225.7
7,207.0		Formation Name UPPER PIERRE AQUIFER-TOP PROD	Final Top MD (ftKB) 529.8
7,208.0		Formation Name SHANNON-BASE PROD	Final Top MD (ftKB) 5,051.9
7,250.0	7,250.0-7,260.0ftKB on 10/19/1992 00:00 (Perforated); 7250-7260; 1992-10-19	Formation Name NIOBRARA-TOP PROD	Final Top MD (ftKB) 6,951.3
7,250.0	7,250.0-7,265.0ftKB on 12/8/2000 00:00 (Perforated); 7250-7265; 2000-12-08	Formation Name CODELL	Final Top MD (ftKB) 7,249.2
7,259.8		Formation Name NIOBRARA	Final Top MD (ftKB) 6,943.0
7,265.1		Formation Name MOWRY	Final Top MD (ftKB) 7,708.0
7,336.0		Formation Name PARKMAN	Final Top MD (ftKB) 3,722.0
7,381.9		Formation Name SUSSEX	Final Top MD (ftKB) 4,251.0
7,386.2		Formation Name SHANNON	Final Top MD (ftKB) 4,985.0
		Formation Name NIOBRARA A	Final Top MD (ftKB) 7,020.0
		Formation Name NIOBRARA B	Final Top MD (ftKB) 7,108.0
		Formation Name NIOBRARA C	Final Top MD (ftKB) 7,226.0
		Formation Name FORT HAYS	Final Top MD (ftKB) 7,249.0
		Formation Name GREENHORN	Final Top MD (ftKB) 7,333.0
		Surface Location (Congressional)	
		Qtr 3 NW	Qtr 4 SE
		Section 25	Twntshp 4
		Twntshp... N	Range 66
		Rng E./... W	Latitude (°) 40.28140631
			Longitude (°) -104.722898493



PA Wellbore For State - Vertical

Well Name: SCHMIDT 25-10F



Wellbore Sections						
Section Des	Hole Size (in)	Top Depth (ftKB)	Btm Depth (ftKB)			
Surface	12 1/4	11.0	522.0			
Production	7 7/8	522.0	7,386.0			
Casing Strings						
Csg Des	Run Date	OD (in)	Wt/Len (lb/ft)	Grade	Top Depth (MD) (ftKB)	Set Depth (MD) (ftKB)
Surface	10/1/1992	8 5/8	23.00	WC50	11	522
Production Casing	10/5/1992	4 1/2	11.60	M-75	11	7382
Cement						
Des	Start Date	Top (ftKB)	Btm (ftKB)			
SURFACE CASING CEMENT	10/1/1992	11.0	522.0			
PRODUCTION CASING CEMENT	10/5/1992	3,930.0	4,815.0			
PRODUCTION CASING CEMENT	10/5/1992	6,450.0	7,382.0			
Stim/Frac Summary						
Min Top Depth (ftKB)			Max Btm Depth (ftKB)			
7,033.0			7,132.0			
Min Top Depth (ftKB)			Max Btm Depth (ftKB)			
7,250.0			7,260.0			
Min Top Depth (ftKB)			Max Btm Depth (ftKB)			
7,250.0			7,265.0			
Perforations						
Linked Zone	Date	Top Depth (ftKB)	Bottom Depth (ftKB)			
NIOBRARA, Original Hole	10/23/1992 00:00	7,033.0	7,045.0			
Linked Zone	Date	Top Depth (ftKB)	Bottom Depth (ftKB)			
NIOBRARA, Original Hole	10/23/1992 00:00	7,112.0	7,132.0			
Linked Zone	Date	Top Depth (ftKB)	Bottom Depth (ftKB)			
CODELL, Original Hole	12/8/2000 00:00	7,250.0	7,265.0			
Linked Zone	Date	Top Depth (ftKB)	Bottom Depth (ftKB)			
CODELL, Original Hole	10/19/1992 00:00	7,250.0	7,260.0			
Other In Hole						
Run Date	Des	Make	OD (in)	Top (ftKB)	Btm (ftKB)	
Logs						
Date	Type	Depth Top (MD) (ftKB)	Btm (ftKB)			
10/5/1992	Compensated Density	3,650	7,348.0			
10/5/1992	Induction	522	7,384.0			
10/9/1992	Cement Bond	3,580	7,321.0			
3/16/2012	GYRO	10	7,200.0			
Wellbore Plug Back Total Depths						
Date	Type	Com	PBDT (ftKB)			
10/5/1992	Guide Shoe		7,336			