

# PA 11-12 Wellbore Diagram

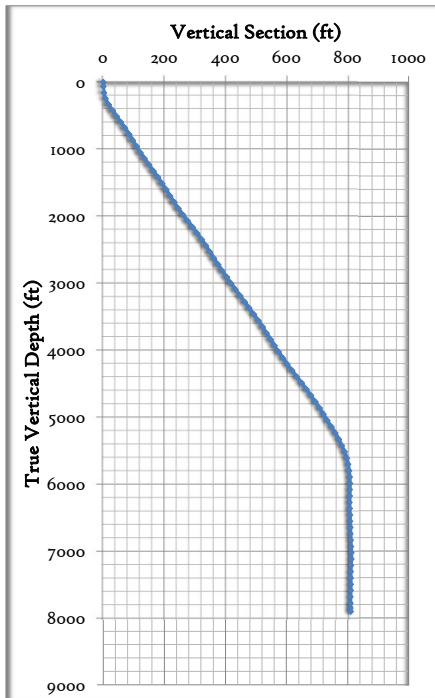
Last Updated: 11/6/2025



Well	County	API		
PA 11-12	Garfield	05-045-15989		
Location	Spud Date	PBTD	TD	Surf TOC
NWNW 12 7S95W	12/27/2008	7,758	7,963	0
Mineral/Surface	Lease #	Top Perf	Bot Perf	Prod TOC
FEE		5,818	7,700	3,550

Wellbore details				
CASING DETAIL	Depth	Size	Weight	Grade
Conductor Csg	45	18	48.0	
Cement	25 sks			
Hole size	24	Notes:		
	Depth	Size	Weight	Grade
Surface Csg	1,134	9 5/8	32.3	J-55
Cement	315 sks			
Hole size	13 1/2	Notes:		
	Depth	Size	Weight	Grade
Prod Csg	7,943	4 1/2	11.6	I-80
Cement	1040 sks			
Hole size	7 7/8	Notes:		
KB	24			
TUBING DETAIL	7,422	2 3/8	4.70	J-55
Current EOT	85%	Notes:		

Formation Top	Depth (ft)
Wasatch G	2,248
MesaVerde	4,495
Cameo	6,884
Rollins	7,832



Stages and Perf intervals	Formation Tops	Wellbore Details
		Cond Csg: 18" 48# set @ 45'
		Hole Size: 24"
		Cement: 25 sks
		Surf TOC: 0 VISU
		Surf Csg: 9-5/8" 32.3# J-55 set @ 1134'
		Hole Size: 13-1/2"
		Cement: 315 sks
		Prod TOC: 3,550 CBL
		Tubing: 2-3/8" 4.7# J-55 set @ 7422'
		Prod Csg: 4-1/2" 11.6# I-80 set @ 7943'
		Hole Size: 7-7/8"
		Cement: 1040 sks
5,818 6,037 MV 3		
6,155 6,322 MV 2		
6,481 6,761 MV 1		
6,830 6,832 Cameo		
6,963 7,198 Cameo		
7,425 7,700 Lower Cameo		
PBTD: 7,758	TD: 7,963	