



ERM

1200 17th Street
Floor 10
Denver, CO, 80202

T +1 303 741-5050
erm.com

22 October 2025

Sater USX CC 19-10

Remediation #26903

Operator NOBLE #100322

This Supplemental Site Investigation Report has been prepared by Environmental Resources Management, Inc. (ERM), on behalf of Noble Energy, Inc. (Noble), for Sater USX CC 19-10, Remediation #26903.

BACKGROUND

Pursuant to ECMC Rule 911, a site investigation was conducted pertaining to the Sater USX CC 19-10 wellhead and flowline decommissioning. The wellhead was cut and capped per Colorado Energy and Carbon Management Commission (ECMC) rules. The flowline was removed on 4/26/2023, and the ECMC was notified on Form 44 Document # 403537200.

Confirmatory sampling conducted in April 2023 as part of initial wellhead closure activities did not reveal exceedances of ECMC Table 915-1 regulatory standards for soil quality. Wellhead closure activities are documented in the Site Investigation and Remediation Work Plan (Supplemental Form 27), submitted to the ECMC on 21 March 2024, Document # 403728009.

SITE INVESTIGATION ACTIVITIES

SOIL SAMPLING

On 19 May 2025, ERM conducted confirmation soil sampling using a hand auger at the former wellhead and along the flowline as shown in Figure 2.

ERM advanced one confirmation soil boring located at the former wellhead (WH-01) with samples collected at 6- ft bgs and four confirmation soil borings along the flowline (FL-01, FL-02, FL-03, FL-04) with samples collected at 4- ft bgs.

ERM advanced three soil borings (BG-01 through BG-03) to serve as nearby, non-impacted, sampling locations to evaluate background concentrations for the respective target analytes. Locations were sampled at 4- ft bgs.

A total of 8 soil samples, comprising 5 confirmation samples and 3 background samples, were submitted to Pace Analytical, an accredited facility located in Mt. Juliet, Tennessee for complete Table 915-1 analytical suite analysis except for background samples which were analyzed for Soil Suitability for Reclamation (SSR) and metals.

RESULTS

Analytical results from the May 2025 supplemental site investigation are detailed in Tables 1-5 and Figures 3-5. The complete encrypted analytical reports from Pace Analytical are included as attachments with the respective Form 27 submittal of this report.

Upon receipt of laboratory analytical results, data were reviewed for general quality control and quality assurance measures. The following key observations and data qualifiers were noted:

- The temperature of soil samples at the time of laboratory receipt was 1.5 degrees Celsius (°C), which is within the acceptable range of 0°C to 6°C.

The Following lab qualifier codes were received:

- J5 The sample matrix interfered with the ability to make any accurate determination; spike value is high.
- V The sample concentration is too high to evaluate accurate spike recoveries
- Chromium (VI) minimum detection limit exceeded ECMC GSSL of 0.00067 mg/kg with values ranging between 0.195 – 0.198 mg/kg.

BACKGROUND SAMPLES

As shown in Tables 1-5 and Figures 3-5, the following background samples exceed ECMC Table 915-1 for:

- Arsenic Residential Soil Screening Level (RSSL) standard of 0.68 milligrams per kilograms (mg/kg) for all background samples, with results ranging from 1.53 to 1.77 mg/kg.

WELLHEAD WH-02 CONFIRMATION AND DELINEATION SAMPLES

As shown in Tables 1-5 and Figures 3-5, the following WH-01 confirmation and delineation samples exceed ECMC Table 915-1 for:

- pH standard range of 6 to 8.3 SUs for 26903-WH-01-SO-6-20250519, with a result of 8.55 SUs.
- Arsenic RSSL standard of 0.29 mg/kg for 26903-WH-01-SO-6-20250519, with a result of 1.15 mg/kg. When compared to 125% the maximum arsenic value of nearby background samples (2.21 mg/kg), 26903-WH-01-SO-6-20250519 is found to be at or below the calculated background maximum value.

FLOWLINE FL- CONFIRMATION SAMPLES

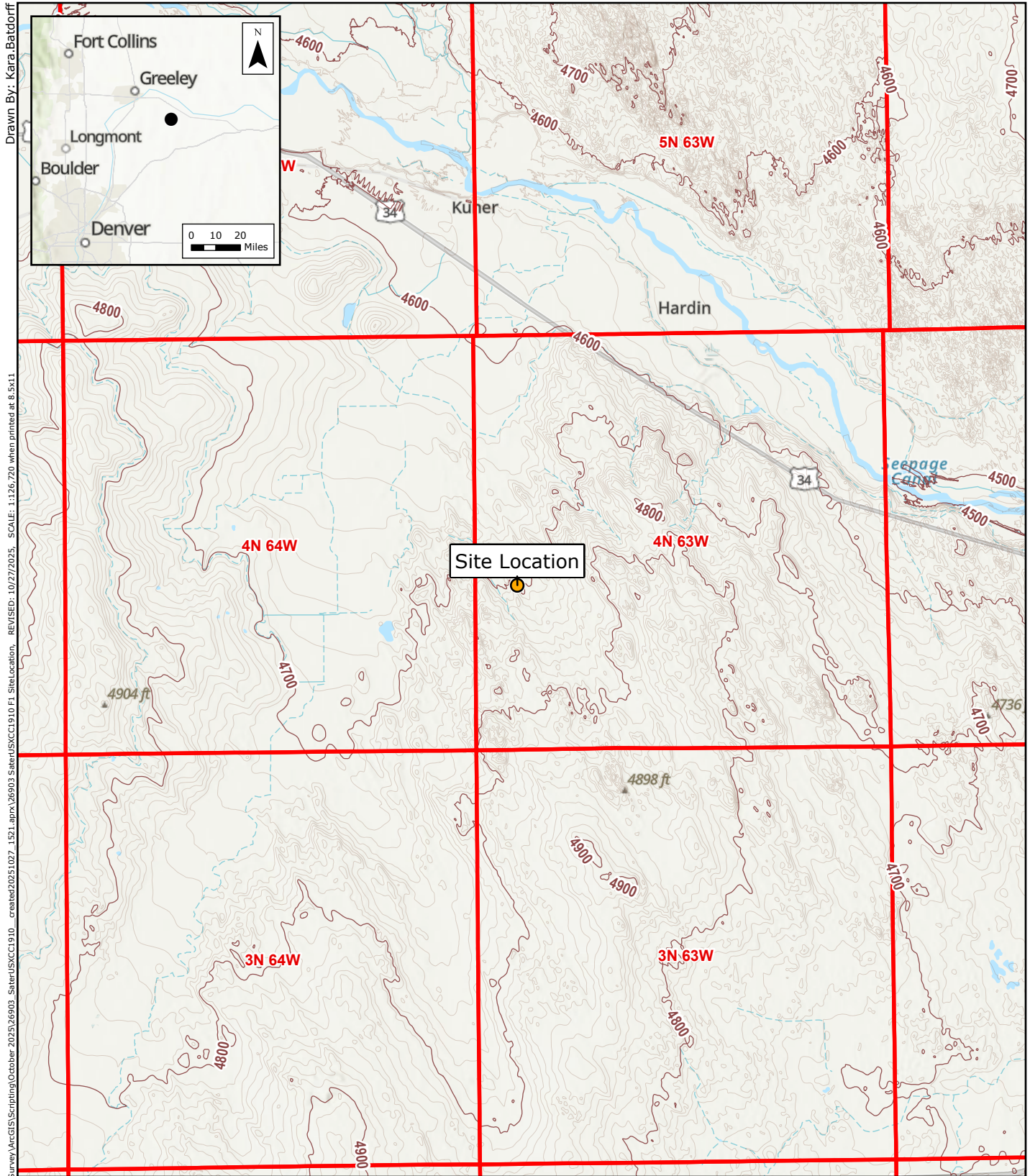
As shown in Tables 1-5 and Figure 3-5, the following FL- confirmation samples exceed ECMC Table 915-1 for:

- pH standard range of 6 to 8.3 SUs for 26903-FL-01-SO-4-20250519, 26903-FL-02-SO-4-20250519, 26903-FL-03-SO-4-20250519, and 26903-FL-04-SO-4-20250519, with results ranging between 8.34 - 8.95 SUs.

- Arsenic RSSL standard of 0.29 mg/kg for 26903-FL-01-SO-4-20250519, 26903-FL-02-SO-4-20250519, 26903-FL-03-SO-4-20250519, and 26903-FL-04-SO-4-20250519, with results ranging between 0.859 - 1.21 mg/kg. When compared to 125% the maximum arsenic value of nearby background samples (2.21 mg/kg all samples are found to be at or below the calculated background maximum value.
- Barium GSSL standard of 82 mg/kg for 26903-FL-04-SO-4-20250519 samples, with a result of 85.3 mg/kg.

NEXT STEPS

ERM is currently evaluating next steps for further assessment of pH, arsenic, and barium against background samples for applicability to Soil Reclamation Criteria.

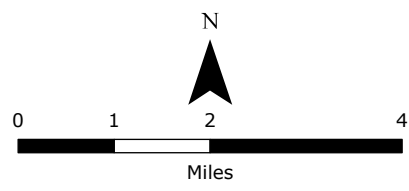


M:\US\Projects\A-C\Chevron\BBU Remediation Field Survey\ArcGIS\Scripting\October 2025\26903_Sater\USXCC1910... created 20251027 152.L.aprx\26903_Sater\USXCC1910.FI_SiteLocation_REVISED_10/27/2025_SCALE: 1:126,720 when printed at 8.5x11

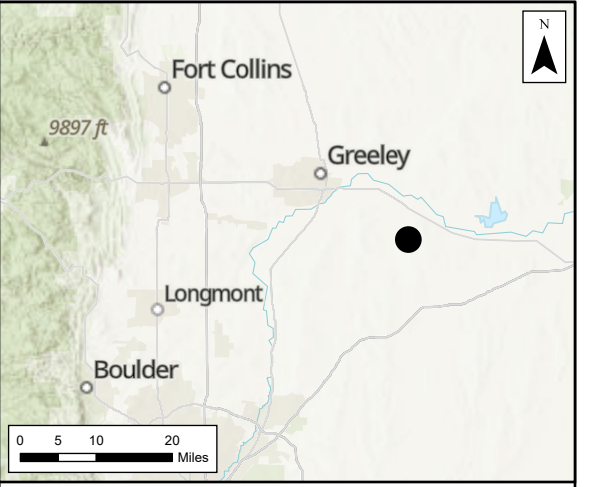
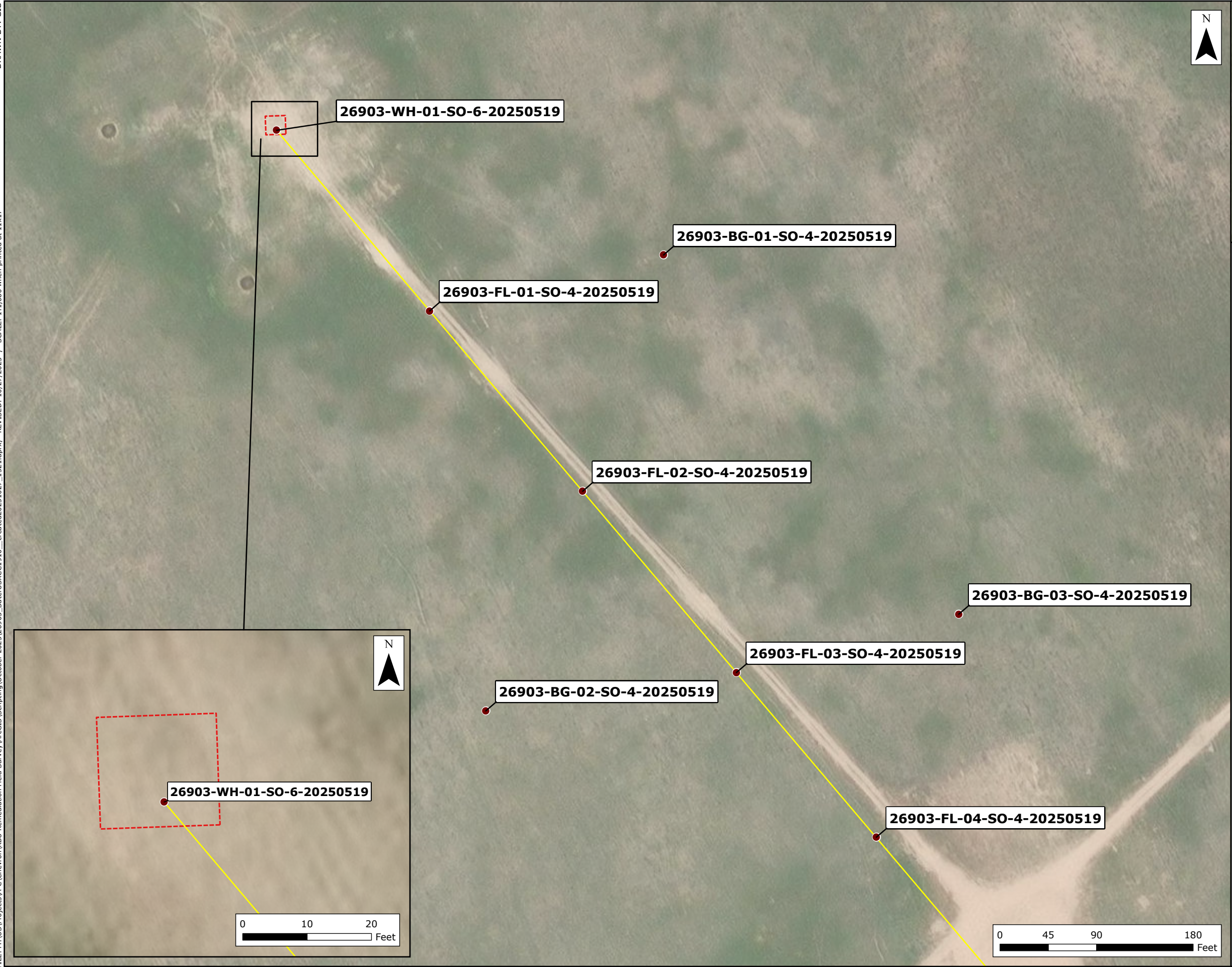
Drawn By: Kara Batdorff

Figure 1
Topographic Site Location
Sater USX CC 19-10
REM# 26903
Operator: 100322
 RBU Remediation Field Survey
 Chevron
 Weld County, CO
 104.47813°W 40.29617°N
 NWSE Sec19 T4N R63W PM6
 API# 123-24128

N = North
 E = East
 S = South
 W = West
 Sec = Section
 T = Township
 R = Range
 PM = Principal Meridian



Source: Esri - World Topographic Map; NAD 1983 2011 StatePlane Colorado North FIPS 0501 Ft US



Legend

- Soil Sample Location
- ▭ Initial Assessment Boundary
- Approximate Flowline

Notes:

- BG = Background
- FL = Flowline
- WH = Wellhead
- N = North
- E = East
- S = South
- W = West
- Sec = Section
- T = Township
- R = Range
- PM = Principal Meridian

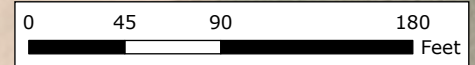
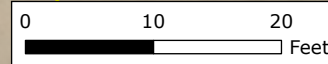
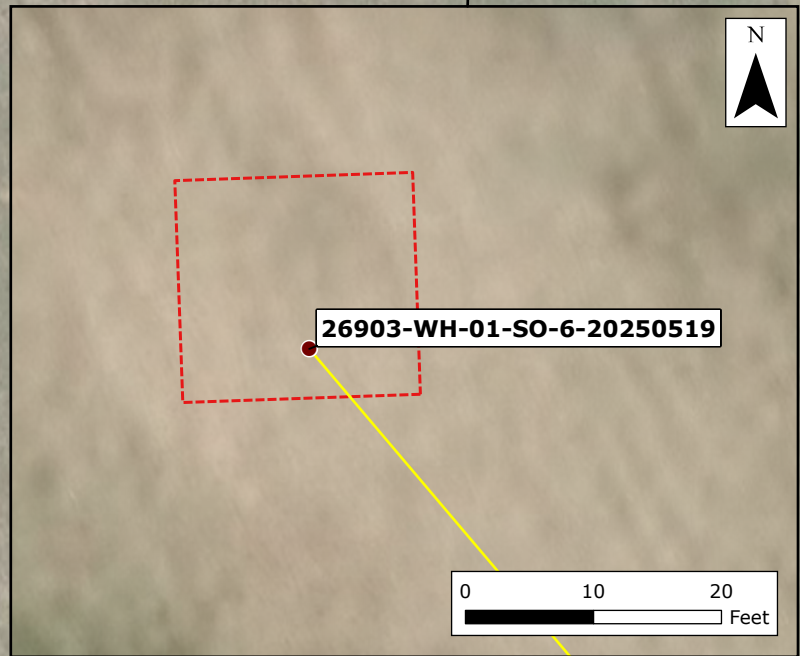
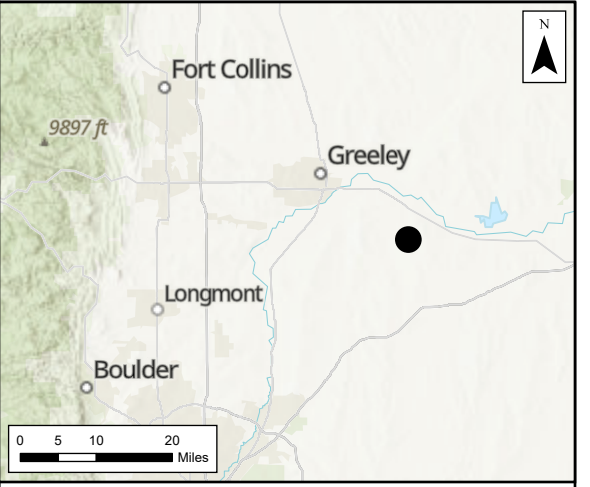


Figure 2
Soil Sample Locations
 Sater USX CC 19-10
 REM# 26903
 Operator: 100322
 RBURemediationFieldSurvey
 Chevron
 Weld County, CO
 104.47813°W 40.29617°N
 NWSE Sec19 T4N R63W PM6
 API# 123-24128





Legend

- Soil Sample Location
- ▭ Initial Assessment Boundary
- Approximate Flowline

Notes:

No samples during the sampling event had values above ECMC Table 915-1 Clean-Up Concentrations (Organics Exceedance).

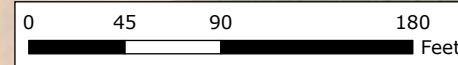
Analytical results below laboratory detection limits, or within compliance of ECMC Table 915-1 not shown.

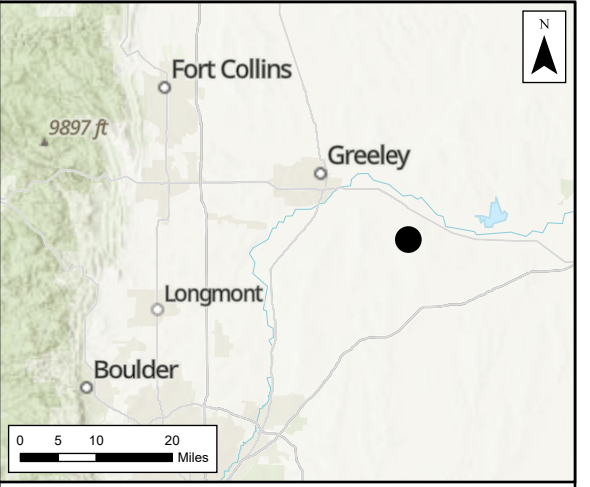
ECMC = Energy and Carbon Management Commission
 ft bgs = feet below ground surface
 BG = Background
 FL = Flowline
 WH = Wellhead
 GSSL = Groundwater Soil Screening Levels

**Figure 3
 Exceedance Values
 in Soil Samples - Organics**

Sater USX CC 19-10
 REM# 26903
 Operator: 100322
 RBURemediationFieldSurvey
 Chevron
 Weld County, CO
 104.47813°W 40.29617°N
 NWSE Sec19 T4N R63W PM6
 API# 123-24128

N = North
 E = East
 S = South
 W = West
 Sec = Section
 T = Township
 R = Range
 PM = Principal Meridian





Legend

- Soil Sample Location
- ▭ Initial Assessment Boundary
- Approximate Flowline

Notes:

Green faced values exceed the ECMC Table 915-1 limit(s), but are within 1x maximum background concentrations.
Red values are above ECMC Table 915-1 limit(s) and 1x maximum background concentrations.

Analytical results below laboratory detection limits, or within compliance of ECMC Table 915-1 not shown.

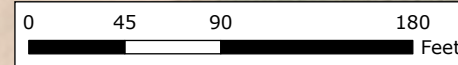
ECMC Table 915-1 Soil Suitability for Reclamation
 pH = 8.30 pH units

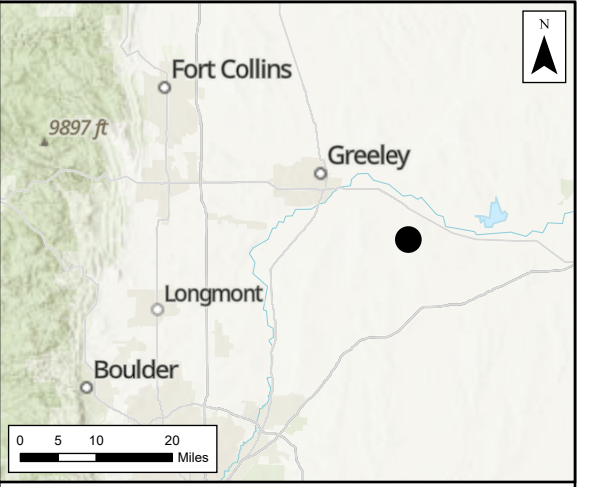
ECMC = Energy and Carbon Management Commission
 ft bgs = feet below ground surface
 BG = Background
 FL = Flowline
 WH = Wellhead
 SSR = Soil Suitability for Reclamation

Figure 4
Exceedance Values
in Soil Samples - SSR

Sater USX CC 19-10
 REM# 26903
 Operator: 100322
 RBURemediationFieldSurvey
 Chevron
 Weld County, CO
 104.47813°W 40.29617°N

NWSE Sec19 T4N R63W PM6
 API# 123-24128
 N = North
 E = East
 S = South
 W = West
 Sec = Section
 T = Township
 R = Range
 PM = Principal Meridian





Legend

- Soil Sample Location
- ▭ Initial Assessment Boundary
- Approximate Flowline

Notes:
 Results in milligrams per kilogram (mg/kg) unless otherwise noted.
Green faced values exceed the ECMC Table 915-1 limit(s), but are within 1.25x maximum background concentrations.
Red values are above ECMC Table 915-1 limit(s) and 1.25x maximum background concentrations.

Analytical results below laboratory detection limits, or within compliance of ECMC Table 915-1 not shown.

ECMC Table 915-1 GSSLs Listed in mg/kg
 Arsenic = 0.290 (max. BG = 1.77) (1.25x max. BG = 2.21)
 Barium = 82.0

ECMC = Energy and Carbon Management Commission
 ft bgs = feet below ground surface
 BG = Background
 FL = Flowline
 WH = Wellhead

Figure 5
Exceedance Values
in Soil Samples - Metals
 Sater USX CC 19-10
 REM# 26903
 Operator: 100322
 RBUR Remediation Field Survey
 Chevron
 Weld County, CO
 104.47813°W 40.29617°N
 NWSE Sec19 T4N R63W PM6
 API# 123-24128

N = North
 E = East
 S = South
 W = West
 Sec = Section
 T = Township
 R = Range
 PM = Principal Meridian

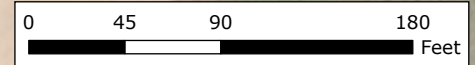


TABLE 1
 FIELD DATA SUMMARY TABLE
 OPERATOR 100322
 SATER USX CC 19-10, WELD COUNTY, COLORADO
 REM # 26903

Sample ID	Sample Date	Depth (ft bgs)	GPS Data Latitude	GPS Data Longitude	PDOP Value	VOC Concentration (ppm)
26903-BG-01-SO-4-20250519	05/19/2025	4	40.29582	-104.47686		11.4
26903-BG-02-SO-4-20250519	05/19/2025	4	40.29466	-104.47747		3.5
26903-BG-03-SO-4-20250519	05/19/2025	4	40.29489	-104.47589		6.6
26903-FL-01-SO-4-20250519	05/19/2025	4	40.29569	-104.47764		11.4
26903-FL-02-SO-4-20250519	05/19/2025	4	40.29522	-104.47714		7.3
26903-FL-03-SO-4-20250519	05/19/2025	4	40.29475	-104.47663		7.7
26903-FL-04-SO-4-20250519	05/19/2025	4	40.29433	-104.47617		7.2
26903-WH-01-SO-6-20250519	05/19/2025	6	40.29615	-104.47815		8.3

Notes:

1. Global Positioning System (GPS) data is provided in decimal degrees using North American Datum (NAD) 83 UTM Zone 13 North.
 2. Volatile organic compound (VOC) concentrations are measured in the field using a photoionization detector (PID).
- ECMC = Energy and Carbon Management Commission
 PDOP = Position Dilution of Precision
 ppm = Parts per million
 ft bgs = Feet below ground surface

TABLE 2
SUMMARY OF VOLATILE ORGANIC SOIL CHEMISTRY DATA
OPERATOR 100322
SATER USX CC 19-10, WELD COUNTY, COLORADO
REM # 26903

Sample ID	Sample Date	Depth (ft bgs)	Benzene (mg/kg)	Toluene (mg/kg)	Ethyl-benzene (mg/kg)	Xylenes (mg/kg)	1,2,4-Trimethyl-Benzene (mg/kg)	1,3,5-Trimethyl-Benzene (mg/kg)	Naphthalene (mg/kg)	TPH (mg/kg)	TPH GRO (mg/kg)	TPH DRO (mg/kg)	TPH ORO (mg/kg)
ECMC Table 915-1 Limits (Residential SSL)			1.2	490	5.8	58	30	27	2	500	500**		
ECMC Table 915-1 Limits (Protection of Groundwater SSL)			0.0026	0.69	0.78	9.9	0.0081	0.0087	0.0038	500	500**		
26903-FL-01-SO-4-20250519	05/19/2025	4	< 0.00200	< 0.0100	< 0.0100	< 0.100	< 0.00500	< 0.00500	< 0.00300	< 4.00	< 0.100	< 4.00	< 4.00
26903-FL-02-SO-4-20250519	05/19/2025	4	< 0.00200	< 0.0100	< 0.0100	< 0.100	< 0.00500	< 0.00500	< 0.00300	< 4.00	< 0.100	< 4.00	< 4.00
26903-FL-03-SO-4-20250519	05/19/2025	4	< 0.00200	< 0.0100	< 0.0100	< 0.100	< 0.00500	< 0.00500	< 0.00300	14.7	< 0.100	< 4.00	14.7
26903-FL-04-SO-4-20250519	05/19/2025	4	< 0.00200	< 0.0100	< 0.0100	< 0.100	< 0.00500	< 0.00500	< 0.00300	5.70	< 0.100	< 4.00	5.70
26903-WH-01-SO-6-20250519	05/19/2025	6	< 0.00200	< 0.0100	< 0.0100	< 0.100	< 0.00500	< 0.00500	< 0.00300	5.28	< 0.100	< 4.00	5.28
Notes:													
1. Bold values exceed the ECMC Table 915-1 limit(s)													
2. Red & blue highlighted soil analytical values indicate an exceedance of the referenced soil screening level (SSL)													
3. * Indicates laboratory minimum detection limit in excess of SSL													
4. ** Summation of GRO+DRO+ORO must be less than 500 mg/kg													
ECMC = Energy and Carbon Management Commission													
(<) = Analytical result is less than the indicated laboratory reporting limit.													
TPH-GRO = Total petroleum hydrocarbons - gasoline range organics													
TPH-DRO = Total petroleum hydrocarbons - diesel range organics													
TPH-ORO = Total petroleum hydrocarbons - oil range organics													
mg/kg = Milligrams per kilogram													
ft bgs = Feet below ground surface													
NA - Not analyzed													
Assume wet weight on all historical data unless the lab data specifies wet vs. dry.													

TABLE 3
SUMMARY OF POLYCYCLIC AROMATIC HYDROCARBON SOIL CHEMISTRY DATA
OPERATOR 100322
SATER USX CC 19-10, WELD COUNTY, COLORADO
REM # 26903

Sample ID	Sample Date	Depth (ft bgs)	Acenaphthene (mg/kg)	Anthracene (mg/kg)	Benzo(a)anthracene (mg/kg)	Benzo(a)pyrene (mg/kg)	Benzo(b)fluoranthene (mg/kg)	Benzo(k)fluoranthene (mg/kg)	Chrysene (mg/kg)	Dibenzo(a,h)anthracene (mg/kg)	Fluoranthene (mg/kg)	Fluorene (mg/kg)	Indeno(1,2,3-cd)pyrene (mg/kg)	Pyrene (mg/kg)	1-Methyl-Naphthalene (mg/kg)	2-Methyl-Naphthalene (mg/kg)
ECMC Table 915-1 Limits (Residential SSL)			360	1800	1.1	0.11	1.1	11	110	0.11	240	240	1.1	180	18	24
ECMC Table 915-1 Limits (Protection of Groundwater SSL)			0.55	5.8	0.011	0.24	0.3	2.9	9	0.096	8.9	0.54	0.98	1.3	0.006	0.019
26903-FL-01-SO-4-20250519	05/19/2025	4	< 0.0330	< 0.0330	< 0.00600	< 0.0330	< 0.0330	< 0.0330	< 0.0330	< 0.0330	< 0.0330	< 0.0330	< 0.0330	< 0.0330	< 0.00300	< 0.0120
26903-FL-02-SO-4-20250519	05/19/2025	4	< 0.0330	< 0.0330	< 0.00600	< 0.0330	< 0.0330	< 0.0330	< 0.0330	< 0.0330	< 0.0330	< 0.0330	< 0.0330	< 0.0330	< 0.00300	< 0.0120
26903-FL-03-SO-4-20250519	05/19/2025	4	< 0.0330	< 0.0330	< 0.00600	< 0.0330	< 0.0330	< 0.0330	< 0.0330	< 0.0330	< 0.0330	< 0.0330	< 0.0330	< 0.0330	< 0.00300	< 0.0120
26903-FL-04-SO-4-20250519	05/19/2025	4	< 0.0330	< 0.0330	< 0.00600	< 0.0330	< 0.0330	< 0.0330	< 0.0330	< 0.0330	< 0.0330	< 0.0330	< 0.0330	< 0.0330	< 0.00300	< 0.0120
26903-WH-01-SO-6-20250519	05/19/2025	6	< 0.0330	< 0.0330	< 0.00600	< 0.0330	< 0.0330	< 0.0330	< 0.0330	< 0.0330	< 0.0330	< 0.0330	< 0.0330	< 0.0330	< 0.00300	< 0.0120

Notes:

1. Bold values exceed the ECMC Table 915-1 limit(s)
2. Red & blue highlighted soil analytical values indicate an exceedance of the referenced soil screening level (SSL)
3. * Indicates laboratory minimum detection limit in excess of SSL

ECMC = Energy and Carbon Management Commission
mg/kg = Milligrams per kilogram
ft bgs = Feet below ground surface
NA - Not analyzed

Assume wet weight on all historical data unless the lab data specifies wet vs. dry.

TABLE 4
SUMMARY OF SOIL SUITABILITY FOR RECLAMATION
OPERATOR 100322
SATER USX CC 19-10, WELD COUNTY, COLORADO
REM # 26903

Sample ID	Sample Date	Depth (ft bgs)	pH (Standard Units)	EC (mmhos/cm)	SAR (Standard Units)	Boron (mg/L)
ECMC Table 915-1 Soil Suitability Limits			6-8.3	4	6	2
26903-BG-01-SO-4-20250519	05/19/2025	4	8.12	0.128	0.148	< 0.200
26903-BG-02-SO-4-20250519	05/19/2025	4	7.59	0.124	0.0880	< 0.200
26903-BG-03-SO-4-20250519	05/19/2025	4	7.47	0.0638	0.162	< 0.200
26903-FL-01-SO-4-20250519	05/19/2025	4	8.53	0.157	0.168	< 0.200
26903-FL-02-SO-4-20250519	05/19/2025	4	8.95	0.0933	0.0900	< 0.200
26903-FL-03-SO-4-20250519	05/19/2025	4	8.34	0.191	0.110	< 0.200
26903-FL-04-SO-4-20250519	05/19/2025	4	8.65	0.135	0.159	< 0.200
26903-WH-01-SO-6-20250519	05/19/2025	6	8.55	0.178	0.187	< 0.200
Maximum Background Concentration			8.12	NA	NA	NA
Notes:						
1. Bold faced values exceed the ECMC Table 915-1 limit(s), but are within background concentrations.						
2. Bold faced values exceed the ECMC Table 915-1 limit(s) and native background concentrations.						
3. Brown highlighted soil analytical values indicate an exceedance of Table 915-1.						
ECMC = Energy and Carbon Management Commission						
NA - Not analyzed						
ft bgs = Feet below ground surface						
mg/L = milligrams per liter						
Assume wet weight on all historical data unless the lab data specifies wet vs. dry.						

TABLE 5
SUMMARY OF METALS IN SOIL CHEMISTRY DATA
OPERATOR 100322
SATER USX CC 19-10, WELD COUNTY, COLORADO
REM # 26903

Sample ID	Sample Date	Depth (ft bgs)	Arsenic (mg/kg)	Barium (mg/kg)	Cadmium (mg/kg)	Chromium (VI) (mg/kg)	Copper (mg/kg)	Lead (mg/kg)	Nickel (mg/kg)	Selenium (mg/kg)	Silver (mg/kg)	Zinc (mg/kg)
ECMC Table 915-1 Limits (Residential SSL)			0.68	15000	71	0.3	3100	400	1500	390	390	23000
ECMC Table 915-1 Limits (Protection of Groundwater SSL)			0.29	82	0.38	0.00067	46	14	26	0.26	0.8	370
26903-BG-01-SO-4-20250519	05/19/2025	4	1.53	42.5	< 0.100	< 0.195*	< 10.0	< 10.0	< 10.0	0.172	< 0.500	< 50.0
26903-BG-02-SO-4-20250519	05/19/2025	4	1.75	46.6	< 0.100	< 0.196*	< 10.0	< 10.0	< 10.0	0.179	< 0.500	< 50.0
26903-BG-03-SO-4-20250519	05/19/2025	4	1.77	39.2	< 0.100	< 0.196*	< 10.0	< 10.0	< 10.0	0.145	< 0.500	< 50.0
26903-FL-01-SO-4-20250519	05/19/2025	4	0.955	80.0	< 0.100	< 0.195*	< 10.0	< 10.0	< 10.0	< 0.100	< 0.500	< 50.0
26903-FL-02-SO-4-20250519	05/19/2025	4	0.859	54.1	< 0.100	< 0.198*	< 10.0	< 10.0	< 10.0	< 0.100	< 0.500	< 50.0
26903-FL-03-SO-4-20250519	05/19/2025	4	1.21	69.4	< 0.100	< 0.195*	< 10.0	< 10.0	< 10.0	< 0.100	< 0.500	< 50.0
26903-FL-04-SO-4-20250519	05/19/2025	4	1.16	85.3	< 0.100	< 0.198*	< 10.0	< 10.0	< 10.0	0.122	< 0.500	< 50.0
26903-WH-01-SO-6-20250519	05/19/2025	6	1.15	51.8	< 0.100	< 0.195*	< 10.0	< 10.0	< 10.0	< 0.100	< 0.500	< 50.0
1.25x Maximum Background Concentration			2.21	58.3	NA	NA	NA	NA	NA	NA	NA	NA

Notes:

1. Bold faced values exceed the ECMC Table 915-1 limit(s), but are within 1.25x background concentrations.
2. Bold faced values exceed the ECMC Table 915-1 limit(s) and native background concentrations.
3. Red & blue highlighted soil analytical values indicate an exceedance of the referenced soil screening level (SSL).
4. Non-detect background results accounted for in the highest background concentration by using the reporting limit.

ECMC = Energy and Carbon Management Commission

(<) = Analytical result is less than the indicated laboratory reporting limit.

ft bgs = Feet below ground surface

mg/kg = Milligrams per kilogram

* Indicates laboratory minimum detection limit in excess of SSL

NA - Not analyzed

Assume wet weight on all historical data unless the lab data specifies wet vs. dry.