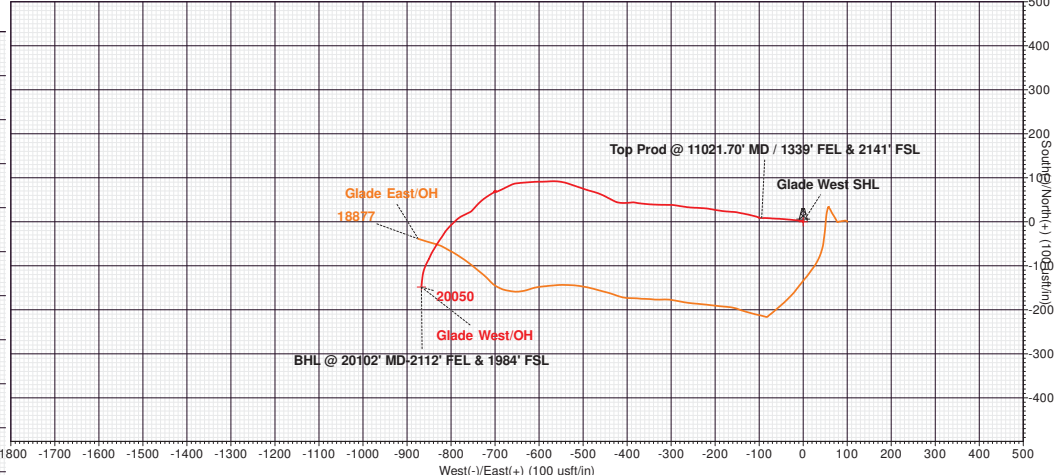
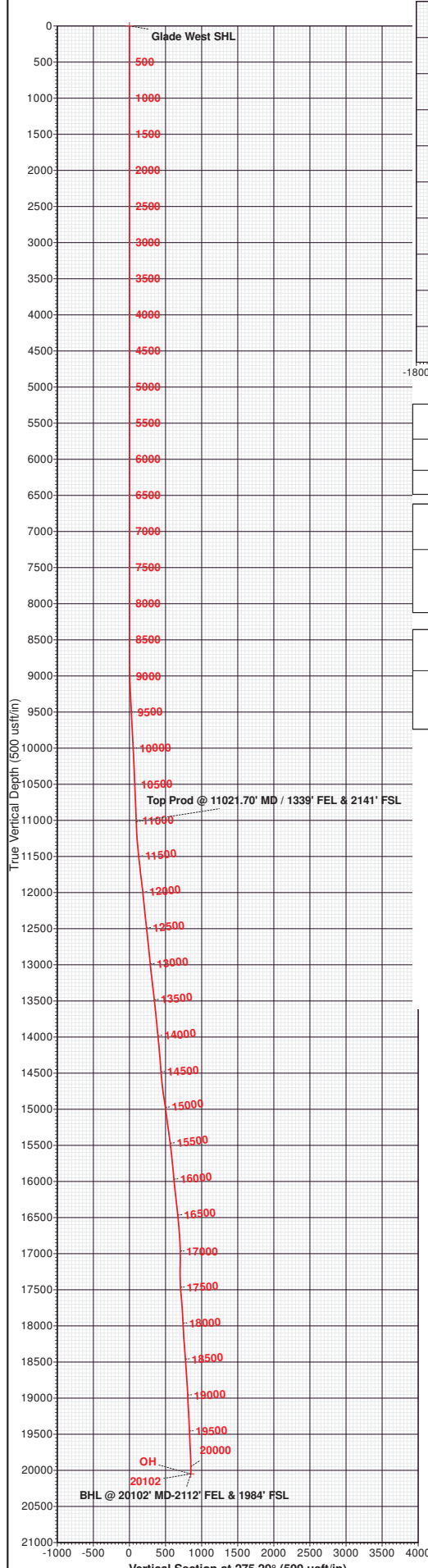




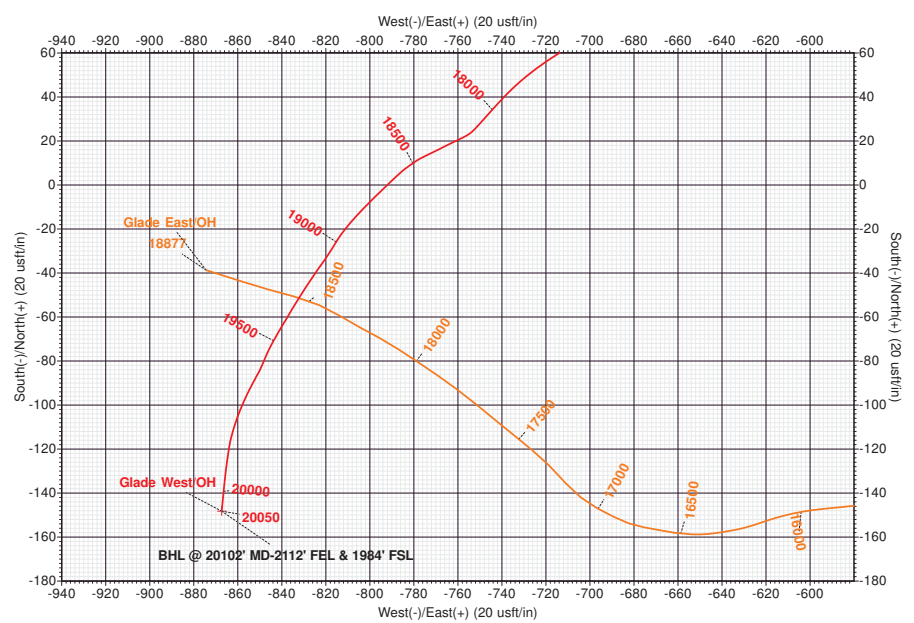
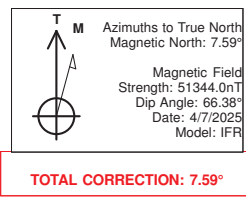
County: WELD-NAD83-UTMFT13N  
 Site: Glade 3N-66W-02 Pad  
 Well: Glade West  
 Depth Reference: 4900+28 @ 4928.00usft (Precision 580)  
 Rig: Precision 580  
 Plan: OH  
 Job #: 20468



SHL: 2132.76' FSL & 1244.38' FEL - Sec 2, T3N, R66W  
 Top Prod: 2141.24' FSL & 1338.60' FEL - Sec 2, T3N, R66W  
 BHL: 1984.13' FSL & 2111.97' FEL - Sec 2, T3N, R66W

ANNOTATIONS								
MD	Inc	Azi	TVD	+N/-S	+E/-W	VSect	Departure	Annotation
11021.70	2.28	271.21	11019.63	8.52	-94.23	94.62	102.13	Top Prod @ 11021.70' MD / 1339' FEL & 2141' FSL
20102.00	10.39	185.47	20049.58	-148.22	-867.29	849.93	1019.22	BHL @ 20102' MD-2112' FEL & 1984' FSL

DESIGN TARGETS DETAILS							
Name	TVD	+N/-S	+E/-W	Northing	Easting	Latitude	Longitude
Glade West SHL	0.00	0.00	0.00	14618806.56	1713149.34	40.252551	-104.739325
Glade West BHL	20049.58	-148.22	-867.29	14618655.79	1712282.49	40.252144	-104.742433



# **Occidental Petroleum\_Rockies**

**WELD-NAD83-UTMFT13N**

**Glade 3N-66W-02 Pad**

**Glade West**

**OH**

**Design: OH**

## **Standard Survey Report**

**19 August, 2025**

# SDT Survey Report

<b>Company:</b> Occidental Petroleum_Rockies	<b>Local Co-ordinate Reference:</b> Well Glade West
<b>Project:</b> WELD-NAD83-UTMFT13N	<b>TVD Reference:</b> 4900+28 @ 4928.00usft (Precision 580)
<b>Site:</b> Glade 3N-66W-02 Pad	<b>MD Reference:</b> 4900+28 @ 4928.00usft (Precision 580)
<b>Well:</b> Glade West	<b>North Reference:</b> True
<b>Wellbore:</b> OH	<b>Survey Calculation Method:</b> Minimum Curvature
<b>Design:</b> OH	<b>Database:</b> EDM 5000 Multi User Db

<b>Project</b> WELD-NAD83-UTMFT13N	
<b>Map System:</b> Universal Transverse Mercator (US Survey Feet)	<b>System Datum:</b> Mean Sea Level
<b>Geo Datum:</b> North American Datum 1983	
<b>Map Zone:</b> Zone 13N (108 W to 102 W)	

<b>Site</b> Glade 3N-66W-02 Pad		
<b>Site Position:</b>	<b>Northing:</b> 14,618,806.85 usft	<b>Latitude:</b> 40.252551
<b>From:</b> Map	<b>Easting:</b> 1,713,249.34 usft	<b>Longitude:</b> -104.738967
<b>Position Uncertainty:</b> 0.00 usft	<b>Slot Radius:</b> 13-3/16 "	

<b>Well</b> Glade West			
<b>Well Position</b>	<b>+N/-S</b> 0.00 usft	<b>Northing:</b> 14,618,806.56 usft	<b>Latitude:</b> 40.252551
	<b>+E/-W</b> 0.00 usft	<b>Easting:</b> 1,713,149.34 usft	<b>Longitude:</b> -104.739325
<b>Position Uncertainty</b>	3.28 usft	<b>Wellhead Elevation:</b> usft	<b>Ground Level:</b> 4,900.00 usft
<b>Grid Convergence:</b>	0.17 °		

<b>Wellbore</b> OH					
<b>Magnetics</b>	<b>Model Name</b>	<b>Sample Date</b>	<b>Declination</b>	<b>Dip Angle</b>	<b>Field Strength</b>
			(°)	(°)	(nT)
	IFR	4/7/2025	7.59	66.38	51,344.00000000

<b>Design</b> OH					
<b>Audit Notes:</b>					
<b>Version:</b> 1.0	<b>Phase:</b> ACTUAL	<b>Tie On Depth:</b> 0.00			
<b>Vertical Section:</b>	<b>Depth From (TVD)</b>	<b>+N/-S</b>	<b>+E/-W</b>	<b>Direction</b>	
	(usft)	(usft)	(usft)	(°)	
	0.00	0.00	0.00	275.29	

<b>Survey Program</b>		<b>Date</b> 8/19/2025
<b>From</b>	<b>To</b>	<b>Survey (Wellbore)</b>
(usft)	(usft)	
15.00	19,951.00	Survey #5 (OH)
20,042.00	20,042.00	Survey #6 (OH)
20,102.00	20,102.00	Survey #7 (OH)
	<b>Tool Name</b>	<b>Description</b>
	Standard Keeper 105	Standard Wireline Keeper ver 1.0.5
	A008Mc_MWD+IFR1+MS_R	MWD+IFR1+MSA
	A026Ua_BLIND	OWSG BLIND

<b>Survey</b>										
<b>Measured</b>	<b>Inclination</b>	<b>Azimuth</b>	<b>Vertical</b>	<b>+N/-S</b>	<b>+E/-W</b>	<b>Vertical</b>	<b>Dogleg</b>	<b>Build</b>	<b>Turn</b>	
<b>Depth</b>	(°)	(°)	<b>Depth</b>	<b>(usft)</b>	<b>(usft)</b>	<b>Section</b>	<b>Rate</b>	<b>Rate</b>	<b>Rate</b>	
(usft)			(usft)	(usft)	(usft)	(usft)	(°/100usft)	(°/100usft)	(°/100usft)	
0.00	0.00	0.00	0.00	0.00	0.00	0.00	0.00	0.00	0.00	0.00
15.00	0.03	51.24	15.00	0.00	0.00	0.00	0.20	0.20	0.00	0.00
30.00	0.06	51.24	30.00	0.01	0.01	-0.01	0.20	0.20	0.00	0.00
45.00	0.09	51.24	45.00	0.02	0.03	-0.03	0.20	0.20	0.00	0.00
60.00	0.15	60.46	60.00	0.04	0.05	-0.05	0.42	0.40	61.47	61.47
75.00	0.11	56.67	75.00	0.06	0.08	-0.08	0.27	-0.27	-25.27	-25.27
90.00	0.12	57.02	90.00	0.07	0.11	-0.10	0.07	0.07	2.33	2.33
105.00	0.12	77.60	105.00	0.09	0.14	-0.13	0.29	0.00	137.20	137.20

**SDT**  
Survey Report

<b>Company:</b>	Occidental Petroleum_Rockies	<b>Local Co-ordinate Reference:</b>	Well Glade West
<b>Project:</b>	WELD-NAD83-UTMFT13N	<b>TVD Reference:</b>	4900+28 @ 4928.00usft (Precision 580)
<b>Site:</b>	Glade 3N-66W-02 Pad	<b>MD Reference:</b>	4900+28 @ 4928.00usft (Precision 580)
<b>Well:</b>	Glade West	<b>North Reference:</b>	True
<b>Wellbore:</b>	OH	<b>Survey Calculation Method:</b>	Minimum Curvature
<b>Design:</b>	OH	<b>Database:</b>	EDM 5000 Multi User Db

Survey										
Measured Depth (usft)	Inclination (°)	Azimuth (°)	Vertical Depth (usft)	+N/-S (usft)	+E/-W (usft)	Vertical Section (usft)	Dogleg Rate (°/100usft)	Build Rate (°/100usft)	Turn Rate (°/100usft)	
120.00	0.11	72.45	120.00	0.09	0.17	-0.16	0.10	-0.07	-34.33	
135.00	0.04	31.45	135.00	0.10	0.18	-0.17	0.56	-0.47	-273.33	
150.00	0.04	35.80	150.00	0.11	0.19	-0.18	0.02	0.00	29.00	
165.00	0.02	283.80	165.00	0.12	0.19	-0.18	0.34	-0.13	-746.67	
180.00	0.04	13.16	180.00	0.12	0.19	-0.18	0.30	0.13	595.73	
195.00	0.06	319.45	195.00	0.13	0.18	-0.17	0.32	0.13	-358.07	
210.00	0.12	5.46	210.00	0.15	0.18	-0.16	0.60	0.40	306.73	
225.00	0.02	44.17	225.00	0.17	0.18	-0.17	0.70	-0.67	258.07	
240.00	0.02	267.23	240.00	0.17	0.18	-0.17	0.25	0.00	-912.93	
255.00	0.12	23.37	255.00	0.19	0.19	-0.17	0.87	0.67	774.27	
270.00	0.06	211.07	270.00	0.19	0.19	-0.17	1.20	-0.40	-1,148.67	
285.00	0.04	143.73	285.00	0.18	0.19	-0.17	0.39	-0.13	-448.93	
300.00	0.14	12.72	300.00	0.20	0.19	-0.18	1.13	0.67	-873.40	
315.00	0.02	122.45	315.00	0.21	0.20	-0.18	0.99	-0.80	731.53	
330.00	0.08	221.55	330.00	0.20	0.20	-0.18	0.57	0.40	660.67	
345.00	0.01	188.14	345.00	0.20	0.19	-0.17	0.48	-0.47	-222.73	
360.00	0.01	140.77	360.00	0.19	0.19	-0.17	0.05	0.00	-315.80	
375.00	0.06	162.85	375.00	0.18	0.19	-0.17	0.34	0.33	147.20	
390.00	0.05	143.93	390.00	0.17	0.20	-0.18	0.14	-0.07	-126.13	
405.00	0.04	112.30	405.00	0.16	0.21	-0.19	0.18	-0.07	-210.87	
420.00	0.02	146.62	420.00	0.16	0.21	-0.20	0.17	-0.13	228.80	
435.00	0.05	116.26	435.00	0.16	0.22	-0.21	0.23	0.20	-202.40	
450.00	0.02	137.51	450.00	0.15	0.23	-0.21	0.21	-0.20	141.67	
465.00	0.04	183.76	465.00	0.14	0.23	-0.22	0.20	0.13	308.33	
480.00	0.02	206.68	480.00	0.14	0.23	-0.21	0.15	-0.13	152.80	
495.00	0.07	246.00	495.00	0.13	0.22	-0.21	0.37	0.33	262.13	
510.00	0.02	344.21	510.00	0.13	0.21	-0.20	0.50	-0.33	654.73	
525.00	0.06	213.20	525.00	0.12	0.20	-0.19	0.50	0.27	-873.40	
540.00	0.02	339.12	540.00	0.12	0.20	-0.19	0.49	-0.27	839.47	
555.00	0.04	224.83	555.00	0.12	0.19	-0.18	0.34	0.13	-761.93	
570.00	0.01	156.91	570.00	0.11	0.19	-0.18	0.25	-0.20	-452.80	
585.00	0.08	213.04	585.00	0.10	0.19	-0.18	0.50	0.47	374.20	
600.00	0.03	194.03	600.00	0.09	0.18	-0.17	0.35	-0.33	-126.73	
615.00	0.03	359.19	615.00	0.09	0.18	-0.17	0.40	0.00	1,101.07	
630.00	0.03	291.60	630.00	0.10	0.18	-0.17	0.22	0.00	-450.60	
645.00	0.03	287.54	645.00	0.10	0.17	-0.16	0.01	0.00	-27.07	
660.00	0.03	185.53	660.00	0.10	0.16	-0.15	0.31	0.00	-680.07	
675.00	0.02	241.65	675.00	0.09	0.16	-0.15	0.17	-0.07	374.13	
690.00	0.02	237.30	690.00	0.09	0.16	-0.15	0.01	0.00	-29.00	
705.00	0.04	0.56	705.00	0.09	0.15	-0.14	0.36	0.13	821.73	
720.00	0.05	136.07	720.00	0.09	0.16	-0.15	0.56	0.07	903.40	
735.00	0.01	49.37	735.00	0.09	0.16	-0.16	0.34	-0.27	-578.00	
750.00	0.01	97.73	750.00	0.09	0.17	-0.16	0.05	0.00	322.40	

**SDT**  
Survey Report

<b>Company:</b>	Occidental Petroleum_Rockies	<b>Local Co-ordinate Reference:</b>	Well Glade West
<b>Project:</b>	WELD-NAD83-UTMFT13N	<b>TVD Reference:</b>	4900+28 @ 4928.00usft (Precision 580)
<b>Site:</b>	Glade 3N-66W-02 Pad	<b>MD Reference:</b>	4900+28 @ 4928.00usft (Precision 580)
<b>Well:</b>	Glade West	<b>North Reference:</b>	True
<b>Wellbore:</b>	OH	<b>Survey Calculation Method:</b>	Minimum Curvature
<b>Design:</b>	OH	<b>Database:</b>	EDM 5000 Multi User Db

Survey										
Measured Depth (usft)	Inclination (°)	Azimuth (°)	Vertical Depth (usft)	+N/-S (usft)	+E/-W (usft)	Vertical Section (usft)	Dogleg Rate (°/100usft)	Build Rate (°/100usft)	Turn Rate (°/100usft)	
765.00	0.02	28.62	765.00	0.09	0.17	-0.16	0.13	0.07	-460.73	
780.00	0.04	193.02	780.00	0.09	0.17	-0.16	0.40	0.13	1,096.00	
795.00	0.04	220.49	795.00	0.08	0.16	-0.16	0.13	0.00	183.13	
810.00	0.02	331.13	810.00	0.08	0.16	-0.15	0.34	-0.13	737.60	
825.00	0.02	192.66	825.00	0.08	0.16	-0.15	0.25	0.00	-923.13	
840.00	0.06	345.47	840.00	0.08	0.16	-0.15	0.52	0.27	1,018.73	
855.00	0.01	9.80	855.00	0.09	0.15	-0.14	0.34	-0.33	162.20	
870.00	0.04	163.52	870.00	0.09	0.16	-0.15	0.33	0.20	1,024.80	
885.00	0.05	308.26	885.00	0.09	0.15	-0.14	0.57	0.07	964.93	
900.00	0.01	300.10	900.00	0.09	0.15	-0.14	0.27	-0.27	-54.40	
915.00	0.05	164.10	915.00	0.09	0.15	-0.14	0.38	0.27	-906.67	
930.00	0.01	167.12	930.00	0.08	0.15	-0.14	0.27	-0.27	20.13	
945.00	0.03	169.54	945.00	0.07	0.15	-0.14	0.13	0.13	16.13	
960.00	0.05	334.91	960.00	0.08	0.15	-0.14	0.53	0.13	1,102.47	
975.00	0.03	296.83	975.00	0.08	0.14	-0.13	0.21	-0.13	-253.87	
990.00	0.02	200.88	990.00	0.08	0.14	-0.13	0.25	-0.07	-639.67	
1,005.00	0.03	150.98	1,005.00	0.08	0.14	-0.13	0.15	0.07	-332.67	
1,020.00	0.01	18.93	1,020.00	0.08	0.14	-0.13	0.25	-0.13	-880.33	
1,035.00	0.02	336.30	1,035.00	0.08	0.14	-0.13	0.10	0.07	-284.20	
1,050.00	0.01	356.82	1,050.00	0.08	0.14	-0.13	0.07	-0.07	136.80	
1,065.00	0.01	299.10	1,065.00	0.08	0.14	-0.13	0.06	0.00	-384.80	
1,080.00	0.01	310.43	1,080.00	0.09	0.13	-0.13	0.01	0.00	75.53	
1,095.00	0.07	137.39	1,095.00	0.08	0.14	-0.13	0.53	0.40	-1,153.60	
1,110.00	0.01	170.46	1,110.00	0.07	0.15	-0.14	0.41	-0.40	220.47	
1,125.00	0.05	137.11	1,125.00	0.07	0.15	-0.14	0.28	0.27	-222.33	
1,140.00	0.03	221.40	1,140.00	0.06	0.15	-0.15	0.37	-0.13	561.93	
1,155.00	0.04	295.98	1,155.00	0.06	0.15	-0.14	0.29	0.07	497.20	
1,170.00	0.04	83.93	1,170.00	0.06	0.15	-0.14	0.51	0.00	986.33	
1,185.00	0.04	109.24	1,185.00	0.06	0.16	-0.15	0.12	0.00	168.73	
1,200.00	0.03	281.20	1,200.00	0.06	0.16	-0.15	0.47	-0.07	1,146.40	
1,215.00	0.06	222.82	1,215.00	0.05	0.15	-0.14	0.34	0.20	-389.20	
1,230.00	0.02	146.99	1,230.00	0.05	0.14	-0.14	0.39	-0.27	-505.53	
1,245.00	0.02	343.07	1,245.00	0.05	0.14	-0.14	0.26	0.00	-1,092.80	
1,260.00	0.05	30.90	1,260.00	0.05	0.15	-0.14	0.26	0.20	318.87	
1,275.00	0.06	79.09	1,275.00	0.06	0.16	-0.15	0.31	0.07	321.27	
1,290.00	0.00	123.87	1,290.00	0.06	0.17	-0.16	0.40	-0.40	0.00	
1,305.00	0.06	175.91	1,305.00	0.05	0.17	-0.16	0.40	0.40	0.00	
1,320.00	0.06	148.31	1,320.00	0.04	0.17	-0.17	0.19	0.00	-184.00	
1,335.00	0.10	120.05	1,335.00	0.03	0.19	-0.18	0.37	0.27	-188.40	
1,350.00	0.04	174.39	1,350.00	0.02	0.20	-0.20	0.56	-0.40	362.27	
1,365.00	0.07	130.73	1,365.00	0.00	0.21	-0.21	0.33	0.20	-291.07	
1,380.00	0.04	163.31	1,380.00	-0.01	0.21	-0.21	0.28	-0.20	217.20	
1,395.00	0.04	120.45	1,395.00	-0.01	0.22	-0.22	0.19	0.00	-285.73	
1,410.00	0.08	52.95	1,410.00	-0.01	0.23	-0.23	0.50	0.27	-450.00	

# SDT Survey Report

<b>Company:</b>	Occidental Petroleum_Rockies	<b>Local Co-ordinate Reference:</b>	Well Glade West
<b>Project:</b>	WELD-NAD83-UTMFT13N	<b>TVD Reference:</b>	4900+28 @ 4928.00usft (Precision 580)
<b>Site:</b>	Glade 3N-66W-02 Pad	<b>MD Reference:</b>	4900+28 @ 4928.00usft (Precision 580)
<b>Well:</b>	Glade West	<b>North Reference:</b>	True
<b>Wellbore:</b>	OH	<b>Survey Calculation Method:</b>	Minimum Curvature
<b>Design:</b>	OH	<b>Database:</b>	EDM 5000 Multi User Db

Survey										
Measured Depth (usft)	Inclination (°)	Azimuth (°)	Vertical Depth (usft)	+N/-S (usft)	+E/-W (usft)	Vertical Section (usft)	Dogleg Rate (°/100usft)	Build Rate (°/100usft)	Turn Rate (°/100usft)	
1,425.00	0.05	45.32	1,425.00	0.00	0.25	-0.25	0.21	-0.20	-50.87	
1,440.00	0.11	19.36	1,440.00	0.02	0.26	-0.25	0.46	0.40	-173.07	
1,455.00	0.06	9.76	1,455.00	0.04	0.26	-0.26	0.35	-0.33	-64.00	
1,470.00	0.07	2.00	1,470.00	0.06	0.26	-0.26	0.09	0.07	-51.73	
1,485.00	0.06	331.61	1,485.00	0.07	0.26	-0.25	0.24	-0.07	-202.60	
1,500.00	0.06	10.36	1,500.00	0.09	0.26	-0.25	0.27	0.00	258.33	
1,515.00	0.05	16.58	1,515.00	0.10	0.26	-0.25	0.08	-0.07	41.47	
1,530.00	0.02	352.11	1,530.00	0.11	0.26	-0.25	0.22	-0.20	-163.13	
1,545.00	0.04	135.33	1,545.00	0.11	0.27	-0.26	0.38	0.13	954.80	
1,560.00	0.04	96.96	1,560.00	0.10	0.28	-0.26	0.18	0.00	-255.80	
1,575.00	0.04	164.86	1,575.00	0.10	0.28	-0.27	0.30	0.00	452.67	
1,590.00	0.03	166.01	1,590.00	0.09	0.28	-0.27	0.07	-0.07	7.67	
1,605.00	0.01	246.81	1,605.00	0.09	0.28	-0.27	0.20	-0.13	538.67	
1,620.00	0.01	204.09	1,620.00	0.08	0.28	-0.27	0.05	0.00	-284.80	
1,635.00	0.03	72.86	1,635.00	0.08	0.29	-0.28	0.25	0.13	-874.87	
1,650.00	0.07	119.21	1,650.00	0.08	0.30	-0.29	0.36	0.27	309.00	
1,665.00	0.04	175.77	1,665.00	0.07	0.31	-0.30	0.39	-0.20	377.07	
1,680.00	0.02	93.70	1,680.00	0.07	0.31	-0.30	0.28	-0.13	-547.13	
1,695.00	0.02	223.43	1,695.00	0.06	0.31	-0.30	0.24	0.00	864.87	
1,710.00	0.03	191.48	1,710.00	0.06	0.31	-0.30	0.11	0.07	-213.00	
1,725.00	0.03	343.04	1,725.00	0.06	0.30	-0.30	0.39	0.00	1,010.40	
1,740.00	0.05	34.50	1,740.00	0.07	0.31	-0.30	0.26	0.13	343.07	
1,755.00	0.04	294.77	1,755.00	0.07	0.31	-0.30	0.46	-0.07	-664.87	
1,770.00	0.03	242.97	1,770.00	0.07	0.30	-0.29	0.21	-0.07	-345.33	
1,785.00	0.03	331.21	1,785.00	0.08	0.29	-0.28	0.28	0.00	588.27	
1,800.00	0.03	228.62	1,800.00	0.08	0.29	-0.28	0.31	0.00	-683.93	
1,815.00	0.08	244.78	1,815.00	0.07	0.28	-0.27	0.35	0.33	107.73	
1,830.00	0.05	310.25	1,830.00	0.07	0.26	-0.25	0.50	-0.20	436.47	
1,845.00	0.04	293.50	1,845.00	0.08	0.25	-0.24	0.11	-0.07	-111.67	
1,860.00	0.06	274.94	1,860.00	0.08	0.24	-0.23	0.17	0.13	-123.73	
1,875.00	0.06	254.34	1,875.00	0.08	0.22	-0.21	0.14	0.00	-137.33	
1,890.00	0.08	282.09	1,890.00	0.08	0.21	-0.20	0.26	0.13	185.00	
1,905.00	0.02	287.05	1,905.00	0.08	0.19	-0.18	0.40	-0.40	33.07	
1,920.00	0.07	283.49	1,920.00	0.08	0.18	-0.17	0.33	0.33	-23.73	
1,935.00	0.05	316.36	1,935.00	0.09	0.17	-0.16	0.26	-0.13	219.13	
1,950.00	0.08	337.64	1,950.00	0.10	0.16	-0.15	0.25	0.20	141.87	
1,965.00	0.03	301.53	1,965.00	0.12	0.15	-0.14	0.39	-0.33	-240.73	
1,980.00	0.04	19.85	1,980.00	0.12	0.15	-0.14	0.30	0.07	522.13	
1,995.00	0.05	350.78	1,995.00	0.13	0.15	-0.14	0.16	0.07	-193.80	
2,010.00	0.04	352.26	2,010.00	0.15	0.15	-0.14	0.07	-0.07	9.87	
2,025.00	0.04	15.02	2,025.00	0.16	0.15	-0.13	0.11	0.00	151.73	
2,040.00	0.02	308.78	2,040.00	0.16	0.15	-0.13	0.25	-0.13	-441.60	
2,055.00	0.08	9.74	2,055.00	0.18	0.15	-0.13	0.48	0.40	406.40	

**SDT**  
Survey Report

<b>Company:</b>	Occidental Petroleum_Rockies	<b>Local Co-ordinate Reference:</b>	Well Glade West
<b>Project:</b>	WELD-NAD83-UTMFT13N	<b>TVD Reference:</b>	4900+28 @ 4928.00usft (Precision 580)
<b>Site:</b>	Glade 3N-66W-02 Pad	<b>MD Reference:</b>	4900+28 @ 4928.00usft (Precision 580)
<b>Well:</b>	Glade West	<b>North Reference:</b>	True
<b>Wellbore:</b>	OH	<b>Survey Calculation Method:</b>	Minimum Curvature
<b>Design:</b>	OH	<b>Database:</b>	EDM 5000 Multi User Db

Survey										
Measured Depth (usft)	Inclination (°)	Azimuth (°)	Vertical Depth (usft)	+N/-S (usft)	+E/-W (usft)	Vertical Section (usft)	Dogleg Rate (°/100usft)	Build Rate (°/100usft)	Turn Rate (°/100usft)	
2,070.00	0.10	354.57	2,070.00	0.20	0.15	-0.13	0.21	0.13	-101.13	
2,085.00	0.05	309.13	2,085.00	0.22	0.14	-0.12	0.49	-0.33	-302.93	
2,100.00	0.03	349.95	2,100.00	0.22	0.14	-0.12	0.22	-0.13	272.13	
2,115.00	0.05	351.74	2,115.00	0.23	0.14	-0.11	0.13	0.13	11.93	
2,130.00	0.08	337.89	2,130.00	0.25	0.13	-0.11	0.22	0.20	-92.33	
2,145.00	0.06	77.91	2,145.00	0.26	0.13	-0.11	0.72	-0.13	666.80	
2,160.00	0.12	175.26	2,160.00	0.25	0.14	-0.12	0.94	0.40	649.00	
2,175.00	0.09	29.71	2,175.00	0.24	0.15	-0.13	1.34	-0.20	-970.33	
2,190.00	0.04	209.07	2,190.00	0.25	0.15	-0.13	0.87	-0.33	1,195.73	
2,205.00	0.09	30.50	2,205.00	0.25	0.16	-0.13	0.87	0.33	-1,190.47	
2,220.00	0.07	78.58	2,220.00	0.27	0.17	-0.15	0.45	-0.13	320.53	
2,235.00	0.09	71.67	2,235.00	0.27	0.19	-0.17	0.15	0.13	-46.07	
2,250.00	0.11	63.53	2,250.00	0.28	0.22	-0.19	0.16	0.13	-54.27	
2,265.00	0.11	64.20	2,265.00	0.29	0.24	-0.21	0.01	0.00	4.47	
2,280.00	0.09	47.69	2,280.00	0.31	0.26	-0.23	0.23	-0.13	-110.07	
2,295.00	0.12	44.22	2,295.00	0.33	0.28	-0.25	0.20	0.20	-23.13	
2,310.00	0.15	41.32	2,310.00	0.35	0.31	-0.27	0.21	0.20	-19.33	
2,325.00	0.10	54.24	2,325.00	0.38	0.33	-0.30	0.38	-0.33	86.13	
2,340.00	0.03	4.34	2,340.00	0.39	0.34	-0.31	0.56	-0.47	-332.67	
2,355.00	0.12	314.43	2,355.00	0.40	0.33	-0.29	0.69	0.60	-332.73	
2,370.00	0.17	304.47	2,370.00	0.43	0.30	-0.26	0.37	0.33	-66.40	
2,385.00	0.18	298.07	2,385.00	0.45	0.26	-0.22	0.15	0.07	-42.67	
2,400.00	0.21	305.06	2,400.00	0.48	0.22	-0.17	0.25	0.20	46.60	
2,415.00	0.24	311.45	2,415.00	0.51	0.17	-0.13	0.26	0.20	42.60	
2,430.00	0.22	310.63	2,430.00	0.55	0.13	-0.08	0.14	-0.13	-5.47	
2,445.00	0.20	316.47	2,445.00	0.59	0.09	-0.03	0.20	-0.13	38.93	
2,460.00	0.25	305.78	2,460.00	0.63	0.04	0.01	0.43	0.33	-71.27	
2,475.00	0.28	317.24	2,475.00	0.67	-0.01	0.07	0.41	0.20	76.40	
2,490.00	0.22	316.91	2,490.00	0.72	-0.05	0.12	0.40	-0.40	-2.20	
2,505.00	0.18	313.71	2,505.00	0.76	-0.09	0.16	0.28	-0.27	-21.33	
2,520.00	0.22	314.02	2,520.00	0.80	-0.13	0.20	0.27	0.27	2.07	
2,535.00	0.15	332.66	2,535.00	0.83	-0.16	0.23	0.61	-0.47	124.27	
2,550.00	0.09	324.50	2,550.00	0.86	-0.17	0.25	0.41	-0.40	-54.40	
2,565.00	0.02	358.15	2,565.00	0.87	-0.18	0.26	0.49	-0.47	224.33	
2,580.00	0.03	296.06	2,580.00	0.88	-0.18	0.26	0.18	0.07	-413.93	
2,595.00	0.03	329.13	2,595.00	0.88	-0.19	0.27	0.11	0.00	220.47	
2,610.00	0.01	42.83	2,610.00	0.89	-0.19	0.27	0.19	-0.13	491.33	
2,625.00	0.00	153.23	2,625.00	0.89	-0.19	0.27	0.07	-0.07	0.00	
2,640.00	0.04	161.26	2,640.00	0.88	-0.19	0.27	0.27	0.27	0.00	
2,655.00	0.04	333.10	2,655.00	0.88	-0.19	0.27	0.53	0.00	1,145.60	
2,670.00	0.02	313.75	2,670.00	0.89	-0.19	0.27	0.15	-0.13	-129.00	
2,685.00	0.03	28.35	2,685.00	0.89	-0.19	0.27	0.21	0.07	497.33	
2,700.00	0.03	37.64	2,700.00	0.90	-0.19	0.27	0.03	0.00	61.93	

**SDT**  
Survey Report

<b>Company:</b>	Occidental Petroleum_Rockies	<b>Local Co-ordinate Reference:</b>	Well Glade West
<b>Project:</b>	WELD-NAD83-UTMFT13N	<b>TVD Reference:</b>	4900+28 @ 4928.00usft (Precision 580)
<b>Site:</b>	Glade 3N-66W-02 Pad	<b>MD Reference:</b>	4900+28 @ 4928.00usft (Precision 580)
<b>Well:</b>	Glade West	<b>North Reference:</b>	True
<b>Wellbore:</b>	OH	<b>Survey Calculation Method:</b>	Minimum Curvature
<b>Design:</b>	OH	<b>Database:</b>	EDM 5000 Multi User Db

Survey										
Measured Depth (usft)	Inclination (°)	Azimuth (°)	Vertical Depth (usft)	+N/-S (usft)	+E/-W (usft)	Vertical Section (usft)	Dogleg Rate (°/100usft)	Build Rate (°/100usft)	Turn Rate (°/100usft)	
2,715.00	0.03	29.37	2,715.00	0.91	-0.18	0.27	0.03	0.00	-55.13	
2,730.00	0.04	76.52	2,730.00	0.91	-0.18	0.26	0.20	0.07	314.33	
2,745.00	0.01	299.42	2,745.00	0.91	-0.17	0.26	0.32	-0.20	-914.00	
2,760.00	0.02	295.40	2,760.00	0.92	-0.18	0.26	0.07	0.07	-26.80	
2,775.00	0.04	5.32	2,775.00	0.92	-0.18	0.26	0.25	0.13	466.13	
2,790.00	0.02	94.03	2,790.00	0.93	-0.17	0.26	0.30	-0.13	591.40	
2,805.00	0.03	226.50	2,805.00	0.92	-0.18	0.26	0.31	0.07	883.13	
2,820.00	0.01	17.03	2,820.00	0.92	-0.18	0.26	0.26	-0.13	1,003.53	
2,835.00	0.07	11.07	2,835.00	0.93	-0.18	0.26	0.40	0.40	-39.73	
2,850.00	0.06	18.61	2,850.00	0.95	-0.17	0.26	0.09	-0.07	50.27	
2,865.00	0.02	36.93	2,865.00	0.96	-0.17	0.25	0.28	-0.27	122.13	
2,880.00	0.02	30.99	2,880.00	0.96	-0.16	0.25	0.01	0.00	-39.60	
2,895.00	0.04	162.65	2,895.00	0.96	-0.16	0.25	0.37	0.13	877.73	
2,910.00	0.03	19.21	2,910.00	0.96	-0.16	0.25	0.44	-0.07	-956.27	
2,925.00	0.01	46.62	2,925.00	0.96	-0.16	0.24	0.14	-0.13	182.73	
2,940.00	0.03	353.58	2,940.00	0.97	-0.16	0.24	0.17	0.13	-353.60	
2,955.00	0.02	359.11	2,955.00	0.97	-0.16	0.25	0.07	-0.07	36.87	
2,970.00	0.04	56.32	2,970.00	0.98	-0.15	0.24	0.22	0.13	381.40	
2,985.00	0.02	52.37	2,985.00	0.98	-0.15	0.24	0.13	-0.13	-26.33	
3,000.00	0.05	346.87	3,000.00	0.99	-0.14	0.24	0.30	0.20	-436.67	
3,015.00	0.09	351.92	3,015.00	1.01	-0.15	0.24	0.27	0.27	33.67	
3,030.00	0.06	12.13	3,030.00	1.03	-0.15	0.24	0.26	-0.20	134.73	
3,045.00	0.01	357.54	3,045.00	1.04	-0.15	0.24	0.34	-0.33	-97.27	
3,060.00	0.06	34.38	3,060.00	1.05	-0.14	0.24	0.35	0.33	245.60	
3,075.00	0.04	6.18	3,075.00	1.06	-0.14	0.23	0.21	-0.13	-188.00	
3,090.00	0.03	357.95	3,090.00	1.07	-0.14	0.23	0.07	-0.07	-54.87	
3,105.00	0.06	338.27	3,105.00	1.08	-0.14	0.24	0.22	0.20	-131.20	
3,120.00	0.04	329.36	3,120.00	1.09	-0.15	0.25	0.14	-0.13	-59.40	
3,135.00	0.02	109.09	3,135.00	1.09	-0.15	0.25	0.38	-0.13	931.53	
3,150.00	0.05	337.43	3,150.00	1.10	-0.15	0.25	0.43	0.20	-877.73	
3,165.00	0.05	10.79	3,165.00	1.11	-0.15	0.25	0.19	0.00	222.40	
3,180.00	0.05	23.37	3,180.00	1.12	-0.14	0.25	0.07	0.00	83.87	
3,195.00	0.10	356.76	3,195.00	1.14	-0.14	0.25	0.40	0.33	-177.40	
3,210.00	0.02	271.21	3,210.00	1.16	-0.14	0.25	0.67	-0.53	-570.33	
3,225.00	0.06	294.65	3,225.00	1.16	-0.15	0.26	0.28	0.27	156.27	
3,240.00	0.06	315.44	3,240.00	1.17	-0.17	0.27	0.14	0.00	138.60	
3,255.00	0.03	351.25	3,255.00	1.18	-0.17	0.28	0.27	-0.20	238.73	
3,270.00	0.01	20.61	3,270.00	1.18	-0.17	0.28	0.15	-0.13	195.73	
3,285.00	0.08	348.52	3,285.00	1.19	-0.17	0.28	0.48	0.47	-213.93	
3,300.00	0.01	355.11	3,300.00	1.21	-0.18	0.29	0.47	-0.47	43.93	
3,315.00	0.04	322.59	3,315.00	1.21	-0.18	0.29	0.21	0.20	-216.80	
3,330.00	0.08	280.26	3,330.00	1.22	-0.19	0.31	0.38	0.27	-282.20	
3,345.00	0.08	346.79	3,345.00	1.23	-0.21	0.32	0.59	0.00	443.53	
3,360.00	0.03	40.51	3,360.00	1.24	-0.21	0.32	0.45	-0.33	358.13	

# SDT Survey Report

<b>Company:</b>	Occidental Petroleum_Rockies	<b>Local Co-ordinate Reference:</b>	Well Glade West
<b>Project:</b>	WELD-NAD83-UTMFT13N	<b>TVD Reference:</b>	4900+28 @ 4928.00usft (Precision 580)
<b>Site:</b>	Glade 3N-66W-02 Pad	<b>MD Reference:</b>	4900+28 @ 4928.00usft (Precision 580)
<b>Well:</b>	Glade West	<b>North Reference:</b>	True
<b>Wellbore:</b>	OH	<b>Survey Calculation Method:</b>	Minimum Curvature
<b>Design:</b>	OH	<b>Database:</b>	EDM 5000 Multi User Db

Survey										
Measured Depth (usft)	Inclination (°)	Azimuth (°)	Vertical Depth (usft)	+N/-S (usft)	+E/-W (usft)	Vertical Section (usft)	Dogleg Rate (°/100usft)	Build Rate (°/100usft)	Turn Rate (°/100usft)	
3,375.00	0.03	330.45	3,375.00	1.25	-0.21	0.32	0.23	0.00	-467.07	
3,390.00	0.08	307.01	3,390.00	1.26	-0.22	0.33	0.36	0.33	-156.27	
3,405.00	0.06	314.03	3,405.00	1.27	-0.23	0.35	0.14	-0.13	46.80	
3,420.00	0.03	12.13	3,420.00	1.28	-0.23	0.35	0.34	-0.20	387.33	
3,435.00	0.09	327.59	3,435.00	1.29	-0.24	0.36	0.48	0.40	-296.93	
3,450.00	0.07	332.68	3,450.00	1.31	-0.25	0.37	0.14	-0.13	33.93	
3,465.00	0.03	310.79	3,465.00	1.32	-0.26	0.38	0.29	-0.27	-145.93	
3,480.00	0.01	285.12	3,480.00	1.33	-0.26	0.38	0.14	-0.13	-171.13	
3,495.00	0.05	353.52	3,495.00	1.33	-0.26	0.39	0.31	0.27	456.00	
3,510.00	0.04	301.63	3,510.00	1.34	-0.27	0.39	0.27	-0.07	-345.93	
3,525.00	0.06	294.26	3,525.00	1.35	-0.28	0.40	0.14	0.13	-49.13	
3,540.00	0.06	295.77	3,540.00	1.35	-0.30	0.42	0.01	0.00	10.07	
3,555.00	0.05	328.96	3,555.00	1.36	-0.31	0.43	0.22	-0.07	221.27	
3,570.00	0.04	295.27	3,570.00	1.37	-0.31	0.44	0.19	-0.07	-224.60	
3,585.00	0.04	356.13	3,585.00	1.38	-0.32	0.44	0.27	0.00	405.73	
3,600.00	0.07	299.17	3,600.00	1.39	-0.33	0.45	0.39	0.20	-379.73	
3,615.00	0.06	332.86	3,615.00	1.40	-0.34	0.47	0.26	-0.07	224.60	
3,630.00	0.05	280.93	3,630.00	1.41	-0.35	0.48	0.33	-0.07	-346.20	
3,645.00	0.01	244.32	3,645.00	1.41	-0.36	0.48	0.28	-0.27	-244.07	
3,660.00	0.05	278.96	3,660.00	1.41	-0.36	0.49	0.28	0.27	230.93	
3,675.00	0.06	296.01	3,675.00	1.41	-0.38	0.51	0.13	0.07	113.67	
3,690.00	0.06	341.53	3,690.00	1.42	-0.39	0.52	0.31	0.00	303.47	
3,705.00	0.06	327.01	3,705.00	1.44	-0.39	0.52	0.10	0.00	-96.80	
3,720.00	0.01	269.90	3,720.00	1.45	-0.40	0.53	0.37	-0.33	-380.73	
3,735.00	0.01	353.51	3,735.00	1.45	-0.40	0.53	0.09	0.00	557.40	
3,750.00	0.03	209.17	3,750.00	1.44	-0.40	0.53	0.26	0.13	-962.27	
3,765.00	0.03	327.13	3,765.00	1.44	-0.41	0.54	0.34	0.00	786.40	
3,780.00	0.04	308.77	3,780.00	1.45	-0.41	0.55	0.10	0.07	-122.40	
3,795.00	0.02	342.19	3,795.00	1.46	-0.42	0.55	0.17	-0.13	222.80	
3,810.00	0.04	301.74	3,810.00	1.46	-0.42	0.56	0.19	0.13	-269.67	
3,825.00	0.04	2.38	3,825.00	1.47	-0.43	0.56	0.27	0.00	404.27	
3,840.00	0.03	23.12	3,840.00	1.48	-0.43	0.56	0.11	-0.07	138.27	
3,855.00	0.06	296.65	3,855.00	1.49	-0.43	0.57	0.44	0.20	-576.47	
3,870.00	0.07	292.96	3,870.00	1.49	-0.45	0.58	0.07	0.07	-24.60	
3,885.00	0.03	222.01	3,885.00	1.49	-0.46	0.59	0.44	-0.27	-473.00	
3,900.00	0.03	266.30	3,900.00	1.49	-0.46	0.60	0.15	0.00	295.27	
3,915.00	0.05	190.57	3,915.00	1.48	-0.47	0.60	0.34	0.13	-504.87	
3,930.00	0.05	310.78	3,930.00	1.48	-0.48	0.61	0.58	0.00	801.40	
3,945.00	0.06	288.96	3,945.00	1.49	-0.49	0.62	0.15	0.07	-145.47	
3,960.00	0.03	198.32	3,960.00	1.49	-0.50	0.63	0.45	-0.20	-604.27	
3,975.00	0.06	264.56	3,975.00	1.48	-0.51	0.64	0.37	0.20	441.60	
3,990.00	0.04	295.13	3,990.00	1.48	-0.52	0.65	0.22	-0.13	203.80	
4,005.00	0.02	329.10	4,005.00	1.49	-0.52	0.66	0.17	-0.13	226.47	

**SDT**  
Survey Report

<b>Company:</b>	Occidental Petroleum_Rockies	<b>Local Co-ordinate Reference:</b>	Well Glade West
<b>Project:</b>	WELD-NAD83-UTMFT13N	<b>TVD Reference:</b>	4900+28 @ 4928.00usft (Precision 580)
<b>Site:</b>	Glade 3N-66W-02 Pad	<b>MD Reference:</b>	4900+28 @ 4928.00usft (Precision 580)
<b>Well:</b>	Glade West	<b>North Reference:</b>	True
<b>Wellbore:</b>	OH	<b>Survey Calculation Method:</b>	Minimum Curvature
<b>Design:</b>	OH	<b>Database:</b>	EDM 5000 Multi User Db

Survey										
Measured Depth (usft)	Inclination (°)	Azimuth (°)	Vertical Depth (usft)	+N/-S (usft)	+E/-W (usft)	Vertical Section (usft)	Dogleg Rate (°/100usft)	Build Rate (°/100usft)	Turn Rate (°/100usft)	
4,020.00	0.04	299.23	4,020.00	1.49	-0.53	0.67	0.16	0.13	-199.13	
4,035.00	0.02	319.48	4,035.00	1.50	-0.54	0.67	0.15	-0.13	135.00	
4,050.00	0.02	330.64	4,050.00	1.50	-0.54	0.68	0.03	0.00	74.40	
4,065.00	0.04	256.11	4,065.00	1.50	-0.55	0.68	0.26	0.13	-496.87	
4,080.00	0.03	211.69	4,080.00	1.50	-0.55	0.69	0.19	-0.07	-296.13	
4,095.00	0.03	266.11	4,095.00	1.50	-0.56	0.69	0.18	0.00	362.80	
4,110.00	0.06	281.41	4,110.00	1.50	-0.57	0.71	0.21	0.20	102.00	
4,125.00	0.07	303.56	4,125.00	1.50	-0.59	0.72	0.18	0.07	147.67	
4,140.00	0.07	331.68	4,140.00	1.52	-0.60	0.74	0.23	0.00	187.47	
4,155.00	0.09	275.90	4,155.00	1.53	-0.61	0.75	0.51	0.13	-371.87	
4,170.00	0.14	307.04	4,170.00	1.54	-0.64	0.78	0.52	0.33	207.60	
4,185.00	0.11	325.58	4,185.00	1.56	-0.66	0.80	0.33	-0.20	123.60	
4,200.00	0.08	313.05	4,200.00	1.58	-0.68	0.82	0.24	-0.20	-83.53	
4,215.00	0.18	337.21	4,215.00	1.61	-0.70	0.84	0.75	0.67	161.07	
4,230.00	0.12	354.19	4,230.00	1.65	-0.71	0.86	0.49	-0.40	113.20	
4,245.00	0.14	357.33	4,245.00	1.68	-0.71	0.86	0.14	0.13	20.93	
4,260.00	0.17	308.39	4,260.00	1.71	-0.73	0.88	0.88	0.20	-326.27	
4,275.00	0.18	309.27	4,275.00	1.74	-0.76	0.92	0.07	0.07	5.87	
4,290.00	0.21	304.39	4,290.00	1.77	-0.80	0.96	0.23	0.20	-32.53	
4,305.00	0.20	297.66	4,305.00	1.80	-0.85	1.01	0.17	-0.07	-44.87	
4,320.00	0.12	336.10	4,320.00	1.83	-0.88	1.04	0.86	-0.53	256.27	
4,335.00	0.13	325.05	4,335.00	1.85	-0.90	1.06	0.17	0.07	-73.67	
4,350.00	0.12	333.31	4,350.00	1.88	-0.91	1.08	0.14	-0.07	55.07	
4,365.00	0.05	312.83	4,365.00	1.90	-0.92	1.10	0.50	-0.47	-136.53	
4,380.00	0.04	333.34	4,380.00	1.91	-0.93	1.10	0.13	-0.07	136.73	
4,395.00	0.04	290.79	4,395.00	1.92	-0.94	1.11	0.19	0.00	-283.67	
4,410.00	0.04	244.35	4,410.00	1.92	-0.95	1.12	0.21	0.00	-309.60	
4,425.00	0.04	228.84	4,425.00	1.91	-0.96	1.13	0.07	0.00	-103.40	
4,440.00	0.05	275.49	4,440.00	1.91	-0.97	1.14	0.25	0.07	311.00	
4,455.00	0.04	335.36	4,455.00	1.91	-0.98	1.15	0.30	-0.07	399.13	
4,470.00	0.05	75.57	4,470.00	1.92	-0.97	1.14	0.46	0.07	668.07	
4,485.00	0.02	212.21	4,485.00	1.92	-0.97	1.14	0.44	-0.20	910.93	
4,500.00	0.11	262.43	4,500.00	1.91	-0.98	1.15	0.66	0.60	334.80	
4,515.00	0.01	152.82	4,515.00	1.91	-1.00	1.17	0.76	-0.67	-730.73	
4,530.00	0.03	228.45	4,530.00	1.91	-1.00	1.17	0.19	0.13	504.20	
4,545.00	0.03	206.57	4,545.00	1.90	-1.00	1.17	0.08	0.00	-145.87	
4,560.00	0.02	21.06	4,560.00	1.90	-1.00	1.17	0.33	-0.07	1,163.27	
4,575.00	0.02	313.27	4,575.00	1.90	-1.00	1.18	0.15	0.00	-451.93	
4,590.00	0.06	254.39	4,590.00	1.90	-1.01	1.19	0.35	0.27	-392.53	
4,605.00	0.03	304.77	4,605.00	1.90	-1.03	1.20	0.31	-0.20	335.87	
4,620.00	0.04	199.68	4,620.00	1.90	-1.03	1.20	0.37	0.07	-700.60	
4,635.00	0.04	152.10	4,635.00	1.89	-1.03	1.20	0.22	0.00	-317.20	
4,650.00	0.06	225.83	4,650.00	1.88	-1.03	1.20	0.41	0.13	491.53	

# SDT Survey Report

<b>Company:</b>	Occidental Petroleum_Rockies	<b>Local Co-ordinate Reference:</b>	Well Glade West
<b>Project:</b>	WELD-NAD83-UTMFT13N	<b>TVD Reference:</b>	4900+28 @ 4928.00usft (Precision 580)
<b>Site:</b>	Glade 3N-66W-02 Pad	<b>MD Reference:</b>	4900+28 @ 4928.00usft (Precision 580)
<b>Well:</b>	Glade West	<b>North Reference:</b>	True
<b>Wellbore:</b>	OH	<b>Survey Calculation Method:</b>	Minimum Curvature
<b>Design:</b>	OH	<b>Database:</b>	EDM 5000 Multi User Db

Survey										
Measured Depth (usft)	Inclination (°)	Azimuth (°)	Vertical Depth (usft)	+N/-S (usft)	+E/-W (usft)	Vertical Section (usft)	Dogleg Rate (°/100usft)	Build Rate (°/100usft)	Turn Rate (°/100usft)	
4,665.00	0.02	338.30	4,665.00	1.88	-1.04	1.21	0.47	-0.27	749.80	
4,680.00	0.02	266.00	4,680.00	1.88	-1.04	1.21	0.16	0.00	-482.00	
4,695.00	0.03	296.56	4,695.00	1.88	-1.05	1.22	0.11	0.07	203.73	
4,710.00	0.00	271.24	4,710.00	1.88	-1.05	1.22	0.20	-0.20	0.00	
4,725.00	0.03	307.98	4,725.00	1.89	-1.06	1.23	0.20	0.20	0.00	
4,740.00	0.02	166.95	4,740.00	1.89	-1.06	1.23	0.32	-0.07	-940.20	
4,755.00	0.05	219.64	4,755.00	1.88	-1.06	1.23	0.27	0.20	351.27	
4,770.00	0.04	253.06	4,770.00	1.87	-1.07	1.24	0.18	-0.07	222.80	
4,785.00	0.01	214.81	4,785.00	1.87	-1.08	1.24	0.22	-0.20	-255.00	
4,800.00	0.04	43.09	4,800.00	1.87	-1.07	1.24	0.33	0.20	-1,144.80	
4,815.00	0.07	177.39	4,815.00	1.87	-1.07	1.24	0.68	0.20	895.33	
4,830.00	0.04	236.94	4,830.00	1.86	-1.07	1.24	0.40	-0.20	397.00	
4,845.00	0.02	159.79	4,845.00	1.85	-1.08	1.24	0.27	-0.13	-514.33	
4,860.00	0.04	257.02	4,860.00	1.85	-1.08	1.25	0.31	0.13	648.20	
4,875.00	0.00	333.90	4,875.00	1.84	-1.09	1.25	0.27	-0.27	0.00	
4,890.00	0.05	358.34	4,890.00	1.85	-1.09	1.25	0.33	0.33	0.00	
4,905.00	0.02	267.41	4,905.00	1.86	-1.09	1.26	0.36	-0.20	-606.20	
4,920.00	0.02	136.39	4,920.00	1.86	-1.09	1.26	0.24	0.00	-873.47	
4,935.00	0.03	25.49	4,935.00	1.86	-1.09	1.25	0.28	0.07	-739.33	
4,950.00	0.02	114.02	4,950.00	1.86	-1.08	1.25	0.24	-0.07	590.20	
4,965.00	0.03	242.32	4,965.00	1.86	-1.08	1.25	0.30	0.07	855.33	
4,980.00	0.02	272.76	4,980.00	1.86	-1.09	1.26	0.11	-0.07	202.93	
4,995.00	0.01	168.64	4,995.00	1.85	-1.09	1.26	0.16	-0.07	-694.13	
5,010.00	0.06	154.66	5,010.00	1.85	-1.09	1.25	0.34	0.33	-93.20	
5,025.00	0.04	157.70	5,025.00	1.83	-1.08	1.25	0.13	-0.13	20.27	
5,040.00	0.03	301.18	5,040.00	1.83	-1.08	1.25	0.44	-0.07	956.53	
5,055.00	0.02	341.76	5,055.00	1.84	-1.09	1.25	0.13	-0.07	270.53	
5,070.00	0.08	233.45	5,070.00	1.83	-1.10	1.26	0.59	0.40	-722.07	
5,085.00	0.03	145.64	5,085.00	1.82	-1.10	1.27	0.56	-0.33	-585.40	
5,100.00	0.02	233.24	5,100.00	1.82	-1.10	1.27	0.24	-0.07	584.00	
5,115.00	0.02	164.39	5,115.00	1.81	-1.11	1.27	0.15	0.00	-459.00	
5,130.00	0.04	208.47	5,130.00	1.81	-1.11	1.27	0.19	0.13	293.87	
5,145.00	0.02	84.95	5,145.00	1.80	-1.11	1.27	0.36	-0.13	-823.47	
5,160.00	0.02	180.29	5,160.00	1.80	-1.10	1.27	0.20	0.00	635.60	
5,175.00	0.01	73.70	5,175.00	1.80	-1.10	1.26	0.17	-0.07	-710.60	
5,190.00	0.02	35.61	5,190.00	1.80	-1.10	1.26	0.09	0.07	-253.93	
5,205.00	0.01	165.21	5,205.00	1.80	-1.10	1.26	0.18	-0.07	864.00	
5,220.00	0.03	132.68	5,220.00	1.80	-1.10	1.26	0.15	0.13	-216.87	
5,235.00	0.03	147.09	5,235.00	1.79	-1.09	1.25	0.05	0.00	96.07	
5,250.00	0.02	150.94	5,250.00	1.79	-1.09	1.25	0.07	-0.07	25.67	
5,265.00	0.05	306.89	5,265.00	1.79	-1.09	1.25	0.46	0.20	1,039.67	
5,280.00	0.06	232.25	5,280.00	1.79	-1.10	1.26	0.45	0.07	-497.60	
5,295.00	0.03	157.76	5,295.00	1.78	-1.11	1.27	0.40	-0.20	-496.60	
5,310.00	0.05	25.54	5,310.00	1.78	-1.10	1.26	0.49	0.13	-881.47	

# SDT Survey Report

<b>Company:</b>	Occidental Petroleum_Rockies	<b>Local Co-ordinate Reference:</b>	Well Glade West
<b>Project:</b>	WELD-NAD83-UTMFT13N	<b>TVD Reference:</b>	4900+28 @ 4928.00usft (Precision 580)
<b>Site:</b>	Glade 3N-66W-02 Pad	<b>MD Reference:</b>	4900+28 @ 4928.00usft (Precision 580)
<b>Well:</b>	Glade West	<b>North Reference:</b>	True
<b>Wellbore:</b>	OH	<b>Survey Calculation Method:</b>	Minimum Curvature
<b>Design:</b>	OH	<b>Database:</b>	EDM 5000 Multi User Db

Survey										
Measured Depth (usft)	Inclination (°)	Azimuth (°)	Vertical Depth (usft)	+N/-S (usft)	+E/-W (usft)	Vertical Section (usft)	Dogleg Rate (°/100usft)	Build Rate (°/100usft)	Turn Rate (°/100usft)	
5,325.00	0.04	128.98	5,325.00	1.78	-1.10	1.26	0.47	-0.07	689.60	
5,340.00	0.04	177.55	5,340.00	1.77	-1.09	1.25	0.22	0.00	323.80	
5,355.00	0.06	167.40	5,355.00	1.76	-1.09	1.25	0.15	0.13	-67.67	
5,370.00	0.01	62.50	5,370.00	1.75	-1.09	1.24	0.42	-0.33	-699.33	
5,385.00	0.05	77.44	5,385.00	1.76	-1.08	1.24	0.27	0.27	99.60	
5,400.00	0.04	210.69	5,400.00	1.75	-1.08	1.23	0.55	-0.07	888.33	
5,415.00	0.03	197.75	5,415.00	1.74	-1.08	1.24	0.08	-0.07	-86.27	
5,430.00	0.01	130.22	5,430.00	1.74	-1.08	1.24	0.19	-0.13	-450.20	
5,445.00	0.02	10.36	5,445.00	1.74	-1.08	1.23	0.18	0.07	-799.07	
5,460.00	0.04	256.89	5,460.00	1.74	-1.08	1.24	0.34	0.13	-756.47	
5,475.00	0.05	283.40	5,475.00	1.74	-1.09	1.25	0.15	0.07	176.73	
5,490.00	0.03	124.77	5,490.00	1.74	-1.10	1.25	0.52	-0.13	-1,057.53	
5,505.00	0.02	67.03	5,505.00	1.74	-1.09	1.25	0.17	-0.07	-384.93	
5,520.00	0.03	90.54	5,520.00	1.74	-1.09	1.24	0.09	0.07	156.73	
5,535.00	0.02	157.70	5,535.00	1.74	-1.08	1.24	0.19	-0.07	447.73	
5,550.00	0.04	159.77	5,550.00	1.73	-1.08	1.23	0.13	0.13	13.80	
5,565.00	0.06	220.57	5,565.00	1.72	-1.08	1.24	0.36	0.13	405.33	
5,580.00	0.01	139.97	5,580.00	1.71	-1.09	1.24	0.39	-0.33	-537.33	
5,595.00	0.04	324.86	5,595.00	1.72	-1.09	1.24	0.33	0.20	-1,167.40	
5,610.00	0.07	154.32	5,610.00	1.71	-1.09	1.24	0.73	0.20	-1,136.93	
5,625.00	0.03	258.05	5,625.00	1.71	-1.09	1.24	0.55	-0.27	691.53	
5,640.00	0.04	35.88	5,640.00	1.71	-1.09	1.24	0.44	0.07	918.87	
5,655.00	0.02	21.29	5,655.00	1.72	-1.08	1.24	0.14	-0.13	-97.27	
5,670.00	0.04	245.34	5,670.00	1.72	-1.09	1.24	0.37	0.13	-906.33	
5,685.00	0.07	148.25	5,685.00	1.71	-1.09	1.24	0.57	0.20	-647.27	
5,700.00	0.02	185.24	5,700.00	1.70	-1.08	1.23	0.37	-0.33	246.60	
5,715.00	0.02	40.53	5,715.00	1.69	-1.08	1.23	0.25	0.00	-964.73	
5,730.00	0.03	62.43	5,730.00	1.70	-1.08	1.23	0.09	0.07	146.00	
5,745.00	0.03	334.24	5,745.00	1.70	-1.07	1.23	0.28	0.00	-587.93	
5,760.00	0.03	183.49	5,760.00	1.70	-1.08	1.23	0.39	0.00	-1,005.00	
5,775.00	0.05	269.03	5,775.00	1.70	-1.08	1.23	0.38	0.13	570.27	
5,790.00	0.01	20.32	5,790.00	1.70	-1.09	1.24	0.36	-0.27	741.93	
5,805.00	0.04	88.12	5,805.00	1.70	-1.08	1.24	0.25	0.20	452.00	
5,820.00	0.01	240.64	5,820.00	1.70	-1.08	1.23	0.33	-0.20	1,016.80	
5,835.00	0.05	157.46	5,835.00	1.69	-1.08	1.23	0.33	0.27	-554.53	
5,850.00	0.04	113.25	5,850.00	1.69	-1.07	1.22	0.23	-0.07	-294.73	
5,865.00	0.04	162.93	5,865.00	1.68	-1.06	1.21	0.22	0.00	331.20	
5,880.00	0.02	58.41	5,880.00	1.68	-1.06	1.21	0.33	-0.13	-696.80	
5,895.00	0.06	34.17	5,895.00	1.68	-1.05	1.20	0.28	0.27	-161.60	
5,910.00	0.02	84.33	5,910.00	1.69	-1.05	1.20	0.33	-0.27	334.40	
5,925.00	0.01	302.42	5,925.00	1.69	-1.05	1.20	0.19	-0.07	-946.07	
5,940.00	0.02	98.84	5,940.00	1.69	-1.04	1.20	0.20	0.07	1,042.80	
5,955.00	0.08	28.30	5,955.00	1.70	-1.04	1.19	0.50	0.40	-470.27	

# SDT Survey Report

<b>Company:</b>	Occidental Petroleum_Rockies	<b>Local Co-ordinate Reference:</b>	Well Glade West
<b>Project:</b>	WELD-NAD83-UTMFT13N	<b>TVD Reference:</b>	4900+28 @ 4928.00usft (Precision 580)
<b>Site:</b>	Glade 3N-66W-02 Pad	<b>MD Reference:</b>	4900+28 @ 4928.00usft (Precision 580)
<b>Well:</b>	Glade West	<b>North Reference:</b>	True
<b>Wellbore:</b>	OH	<b>Survey Calculation Method:</b>	Minimum Curvature
<b>Design:</b>	OH	<b>Database:</b>	EDM 5000 Multi User Db

Survey										
Measured Depth (usft)	Inclination (°)	Azimuth (°)	Vertical Depth (usft)	+N/-S (usft)	+E/-W (usft)	Vertical Section (usft)	Dogleg Rate (°/100usft)	Build Rate (°/100usft)	Turn Rate (°/100usft)	
5,970.00	0.00	211.85	5,970.00	1.71	-1.03	1.18	0.53	-0.53	0.00	
5,985.00	0.01	246.23	5,985.00	1.71	-1.03	1.19	0.07	0.07	0.00	
6,000.00	0.04	72.29	6,000.00	1.71	-1.03	1.18	0.33	0.20	-1,159.60	
6,015.00	0.03	295.68	6,015.00	1.71	-1.03	1.18	0.43	-0.07	-910.73	
6,030.00	0.02	206.83	6,030.00	1.71	-1.03	1.19	0.24	-0.07	-592.33	
6,045.00	0.05	89.43	6,045.00	1.71	-1.03	1.18	0.41	0.20	-782.67	
6,060.00	0.04	143.78	6,060.00	1.71	-1.02	1.17	0.28	-0.07	362.33	
6,075.00	0.02	263.73	6,075.00	1.70	-1.02	1.17	0.35	-0.13	799.67	
6,090.00	0.03	21.72	6,090.00	1.71	-1.02	1.17	0.29	0.07	786.60	
6,105.00	0.04	90.12	6,105.00	1.71	-1.01	1.16	0.27	0.07	456.00	
6,120.00	0.04	152.77	6,120.00	1.70	-1.00	1.16	0.28	0.00	417.67	
6,135.00	0.04	270.41	6,135.00	1.70	-1.01	1.16	0.46	0.00	784.27	
6,150.00	0.07	71.59	6,150.00	1.70	-1.00	1.16	0.72	0.20	1,074.53	
6,165.00	0.04	107.70	6,165.00	1.70	-0.99	1.14	0.30	-0.20	240.73	
6,180.00	0.01	174.48	6,180.00	1.70	-0.98	1.14	0.25	-0.20	445.20	
6,195.00	0.01	34.17	6,195.00	1.70	-0.98	1.14	0.13	0.00	-935.40	
6,210.00	0.04	336.70	6,210.00	1.71	-0.98	1.14	0.24	0.20	-383.13	
6,225.00	0.01	176.29	6,225.00	1.71	-0.99	1.14	0.33	-0.20	-1,069.40	
6,240.00	0.03	203.52	6,240.00	1.71	-0.99	1.14	0.14	0.13	181.53	
6,255.00	0.06	288.15	6,255.00	1.70	-1.00	1.15	0.43	0.20	564.20	
6,270.00	0.02	249.74	6,270.00	1.71	-1.01	1.16	0.31	-0.27	-256.07	
6,285.00	0.02	116.84	6,285.00	1.70	-1.01	1.16	0.24	0.00	-886.00	
6,300.00	0.03	97.00	6,300.00	1.70	-1.00	1.15	0.09	0.07	-132.27	
6,315.00	0.14	256.92	6,315.00	1.70	-1.01	1.17	1.12	0.73	1,066.13	
6,330.00	0.03	240.45	6,330.00	1.69	-1.04	1.19	0.74	-0.73	-109.80	
6,345.00	0.02	215.85	6,345.00	1.69	-1.04	1.19	0.10	-0.07	-164.00	
6,360.00	0.03	1.48	6,360.00	1.69	-1.04	1.19	0.32	0.07	970.87	
6,375.00	0.04	76.19	6,375.00	1.69	-1.04	1.19	0.29	0.07	498.07	
6,390.00	0.02	261.28	6,390.00	1.70	-1.03	1.19	0.40	-0.13	-1,166.07	
6,405.00	0.08	288.29	6,405.00	1.70	-1.05	1.20	0.42	0.40	180.07	
6,420.00	0.05	21.82	6,420.00	1.71	-1.05	1.21	0.65	-0.20	623.53	
6,435.00	0.04	39.03	6,435.00	1.72	-1.05	1.20	0.11	-0.07	114.73	
6,450.00	0.05	326.09	6,450.00	1.73	-1.05	1.20	0.36	0.07	-486.27	
6,465.00	0.05	217.80	6,465.00	1.73	-1.06	1.21	0.54	0.00	-721.93	
6,480.00	0.02	261.97	6,480.00	1.72	-1.06	1.22	0.26	-0.20	294.47	
6,495.00	0.08	67.32	6,495.00	1.73	-1.06	1.21	0.66	0.40	1,102.33	
6,510.00	0.05	34.37	6,510.00	1.73	-1.04	1.20	0.31	-0.20	-219.67	
6,525.00	0.03	169.01	6,525.00	1.74	-1.04	1.19	0.49	-0.13	897.60	
6,540.00	0.05	165.15	6,540.00	1.73	-1.04	1.19	0.13	0.13	-25.73	
6,555.00	0.04	169.61	6,555.00	1.71	-1.03	1.19	0.07	-0.07	29.73	
6,570.00	0.05	139.30	6,570.00	1.70	-1.03	1.18	0.17	0.07	-202.07	
6,585.00	0.07	180.03	6,585.00	1.69	-1.02	1.18	0.31	0.13	271.53	
6,600.00	0.09	200.49	6,600.00	1.67	-1.03	1.18	0.23	0.13	136.40	

**SDT**  
Survey Report

<b>Company:</b>	Occidental Petroleum_Rockies	<b>Local Co-ordinate Reference:</b>	Well Glade West
<b>Project:</b>	WELD-NAD83-UTMFT13N	<b>TVD Reference:</b>	4900+28 @ 4928.00usft (Precision 580)
<b>Site:</b>	Glade 3N-66W-02 Pad	<b>MD Reference:</b>	4900+28 @ 4928.00usft (Precision 580)
<b>Well:</b>	Glade West	<b>North Reference:</b>	True
<b>Wellbore:</b>	OH	<b>Survey Calculation Method:</b>	Minimum Curvature
<b>Design:</b>	OH	<b>Database:</b>	EDM 5000 Multi User Db

Survey										
Measured Depth (usft)	Inclination (°)	Azimuth (°)	Vertical Depth (usft)	+N/-S (usft)	+E/-W (usft)	Vertical Section (usft)	Dogleg Rate (°/100usft)	Build Rate (°/100usft)	Turn Rate (°/100usft)	
6,615.00	0.05	120.62	6,615.00	1.66	-1.03	1.17	0.63	-0.27	-532.47	
6,630.00	0.05	193.22	6,630.00	1.65	-1.02	1.17	0.39	0.00	484.00	
6,645.00	0.05	287.12	6,645.00	1.64	-1.03	1.18	0.49	0.00	626.00	
6,660.00	0.03	278.83	6,660.00	1.64	-1.04	1.19	0.14	-0.13	-55.27	
6,675.00	0.07	227.94	6,675.00	1.64	-1.05	1.20	0.37	0.27	-339.27	
6,690.00	0.07	110.77	6,690.00	1.63	-1.05	1.19	0.80	0.00	-781.13	
6,705.00	0.08	158.95	6,705.00	1.62	-1.04	1.18	0.41	0.07	321.20	
6,720.00	0.09	176.01	6,720.00	1.59	-1.03	1.17	0.18	0.07	113.73	
6,735.00	0.02	226.83	6,735.00	1.58	-1.03	1.17	0.53	-0.47	338.80	
6,750.00	0.03	199.04	6,750.00	1.58	-1.04	1.18	0.10	0.07	-185.27	
6,765.00	0.03	208.68	6,765.00	1.57	-1.04	1.18	0.03	0.00	64.27	
6,780.00	0.09	121.95	6,780.00	1.56	-1.03	1.17	0.62	0.40	-578.20	
6,795.00	0.08	109.97	6,795.00	1.55	-1.01	1.15	0.14	-0.07	-79.87	
6,810.00	0.02	155.56	6,810.00	1.54	-1.00	1.14	0.45	-0.40	303.93	
6,825.00	0.06	208.41	6,825.00	1.53	-1.00	1.14	0.34	0.27	352.33	
6,840.00	0.08	213.01	6,840.00	1.52	-1.01	1.15	0.14	0.13	30.67	
6,855.00	0.03	234.38	6,855.00	1.51	-1.02	1.16	0.35	-0.33	142.47	
6,870.00	0.01	285.46	6,870.00	1.51	-1.03	1.16	0.17	-0.13	340.53	
6,885.00	0.10	144.58	6,885.00	1.49	-1.02	1.15	0.72	0.60	-939.20	
6,900.00	0.08	162.64	6,900.00	1.47	-1.01	1.14	0.23	-0.13	120.40	
6,915.00	0.03	185.56	6,915.00	1.46	-1.01	1.14	0.36	-0.33	152.80	
6,930.00	0.04	34.04	6,930.00	1.46	-1.00	1.13	0.45	0.07	-1,010.13	
6,945.00	0.05	197.27	6,945.00	1.46	-1.00	1.13	0.59	0.07	1,088.20	
6,960.00	0.09	280.97	6,960.00	1.45	-1.02	1.15	0.65	0.27	558.00	
6,975.00	0.06	203.24	6,975.00	1.45	-1.03	1.16	0.65	-0.20	-518.20	
6,990.00	0.05	91.46	6,990.00	1.44	-1.03	1.16	0.61	-0.07	-745.20	
7,005.00	0.07	179.09	7,005.00	1.43	-1.02	1.15	0.56	0.13	584.20	
7,020.00	0.04	23.37	7,020.00	1.43	-1.02	1.15	0.72	-0.20	-1,038.13	
7,035.00	0.05	162.56	7,035.00	1.43	-1.01	1.14	0.56	0.07	927.93	
7,050.00	0.05	236.38	7,050.00	1.42	-1.02	1.14	0.40	0.00	492.13	
7,065.00	0.03	322.52	7,065.00	1.42	-1.03	1.15	0.38	-0.13	574.27	
7,080.00	0.06	142.56	7,080.00	1.41	-1.02	1.15	0.60	0.20	-1,199.73	
7,095.00	0.04	92.29	7,095.00	1.41	-1.01	1.14	0.31	-0.13	-335.13	
7,110.00	0.01	345.19	7,110.00	1.41	-1.01	1.13	0.29	-0.20	-714.00	
7,125.00	0.02	109.10	7,125.00	1.41	-1.01	1.13	0.18	0.07	826.07	
7,140.00	0.08	141.56	7,140.00	1.40	-1.00	1.12	0.43	0.40	216.40	
7,155.00	0.05	124.30	7,155.00	1.39	-0.99	1.11	0.24	-0.20	-115.07	
7,170.00	0.02	336.10	7,170.00	1.39	-0.98	1.11	0.45	-0.20	-988.00	
7,185.00	0.03	112.40	7,185.00	1.39	-0.98	1.10	0.31	0.07	908.67	
7,200.00	0.02	147.69	7,200.00	1.38	-0.97	1.10	0.12	-0.07	235.27	
7,215.00	0.04	186.89	7,215.00	1.38	-0.97	1.10	0.18	0.13	261.33	
7,230.00	0.04	229.45	7,230.00	1.37	-0.98	1.10	0.19	0.00	283.73	
7,245.00	0.02	10.71	7,245.00	1.37	-0.98	1.10	0.38	-0.13	941.73	
7,260.00	0.04	356.95	7,260.00	1.37	-0.98	1.10	0.14	0.13	-91.73	

# SDT Survey Report

<b>Company:</b>	Occidental Petroleum_Rockies	<b>Local Co-ordinate Reference:</b>	Well Glade West
<b>Project:</b>	WELD-NAD83-UTMFT13N	<b>TVD Reference:</b>	4900+28 @ 4928.00usft (Precision 580)
<b>Site:</b>	Glade 3N-66W-02 Pad	<b>MD Reference:</b>	4900+28 @ 4928.00usft (Precision 580)
<b>Well:</b>	Glade West	<b>North Reference:</b>	True
<b>Wellbore:</b>	OH	<b>Survey Calculation Method:</b>	Minimum Curvature
<b>Design:</b>	OH	<b>Database:</b>	EDM 5000 Multi User Db

Survey										
Measured Depth (usft)	Inclination (°)	Azimuth (°)	Vertical Depth (usft)	+N/-S (usft)	+E/-W (usft)	Vertical Section (usft)	Dogleg Rate (°/100usft)	Build Rate (°/100usft)	Turn Rate (°/100usft)	
7,275.00	0.04	32.07	7,275.00	1.38	-0.98	1.10	0.16	0.00	234.13	
7,290.00	0.04	143.17	7,290.00	1.38	-0.97	1.10	0.44	0.00	740.67	
7,305.00	0.08	149.67	7,305.00	1.37	-0.96	1.09	0.27	0.27	43.33	
7,320.00	0.04	190.61	7,320.00	1.36	-0.96	1.08	0.38	-0.27	272.93	
7,335.00	0.03	47.81	7,335.00	1.35	-0.96	1.08	0.44	-0.07	-952.00	
7,350.00	0.02	356.80	7,350.00	1.36	-0.96	1.08	0.16	-0.07	-340.07	
7,365.00	0.03	333.00	7,365.00	1.37	-0.96	1.08	0.09	0.07	-158.67	
7,380.00	0.02	47.41	7,380.00	1.37	-0.96	1.08	0.21	-0.07	496.07	
7,395.00	0.09	49.71	7,395.00	1.38	-0.95	1.07	0.47	0.47	15.33	
7,410.00	0.02	64.65	7,410.00	1.39	-0.93	1.06	0.47	-0.47	99.60	
7,425.00	0.03	320.23	7,425.00	1.39	-0.93	1.06	0.27	0.07	-696.13	
7,440.00	0.06	76.37	7,440.00	1.40	-0.93	1.05	0.52	0.20	774.27	
7,455.00	0.02	102.55	7,455.00	1.40	-0.92	1.04	0.29	-0.27	174.53	
7,470.00	0.08	310.55	7,470.00	1.41	-0.92	1.05	0.65	0.40	-1,013.33	
7,485.00	0.02	185.42	7,485.00	1.41	-0.93	1.06	0.62	-0.40	-834.20	
7,500.00	0.03	234.77	7,500.00	1.41	-0.94	1.06	0.15	0.07	329.00	
7,515.00	0.01	307.36	7,515.00	1.40	-0.94	1.07	0.19	-0.13	483.93	
7,530.00	0.03	334.68	7,530.00	1.41	-0.94	1.07	0.14	0.13	182.13	
7,545.00	0.03	263.59	7,545.00	1.41	-0.95	1.08	0.23	0.00	-473.93	
7,560.00	0.04	126.60	7,560.00	1.41	-0.95	1.07	0.43	0.07	-913.27	
7,575.00	0.02	126.34	7,575.00	1.40	-0.94	1.07	0.13	-0.13	-1.73	
7,590.00	0.04	336.79	7,590.00	1.41	-0.94	1.07	0.39	0.13	-997.00	
7,605.00	0.03	311.34	7,605.00	1.41	-0.95	1.07	0.12	-0.07	-169.67	
7,620.00	0.02	301.61	7,620.00	1.42	-0.95	1.08	0.07	-0.07	-64.87	
7,635.00	0.08	285.91	7,635.00	1.42	-0.96	1.09	0.41	0.40	-104.67	
7,650.00	0.05	328.44	7,650.00	1.43	-0.98	1.11	0.37	-0.20	283.53	
7,665.00	0.04	319.82	7,665.00	1.44	-0.99	1.11	0.08	-0.07	-57.47	
7,680.00	0.05	65.62	7,680.00	1.45	-0.98	1.11	0.48	0.07	705.33	
7,695.00	0.07	50.90	7,695.00	1.46	-0.97	1.10	0.17	0.13	-98.13	
7,710.00	0.03	156.33	7,710.00	1.46	-0.96	1.09	0.55	-0.27	702.87	
7,725.00	0.03	244.93	7,725.00	1.45	-0.96	1.09	0.28	0.00	590.67	
7,740.00	0.05	190.68	7,740.00	1.44	-0.97	1.10	0.27	0.13	-361.67	
7,755.00	0.03	323.13	7,755.00	1.44	-0.97	1.10	0.49	-0.13	883.00	
7,770.00	0.06	334.96	7,770.00	1.45	-0.98	1.11	0.21	0.20	78.87	
7,785.00	0.02	266.22	7,785.00	1.46	-0.98	1.11	0.37	-0.27	-458.27	
7,800.00	0.08	325.35	7,800.00	1.47	-0.99	1.12	0.48	0.40	394.20	
7,815.00	0.07	319.27	7,815.00	1.48	-1.00	1.14	0.09	-0.07	-40.53	
7,830.00	0.07	340.69	7,830.00	1.50	-1.01	1.15	0.17	0.00	142.80	
7,845.00	0.01	99.25	7,845.00	1.51	-1.01	1.15	0.50	-0.40	790.40	
7,860.00	0.06	350.74	7,860.00	1.51	-1.01	1.15	0.43	0.33	-723.40	
7,875.00	0.04	317.21	7,875.00	1.53	-1.02	1.16	0.23	-0.13	-223.53	
7,890.00	0.04	109.37	7,890.00	1.53	-1.02	1.15	0.52	0.00	1,014.40	
7,905.00	0.05	206.46	7,905.00	1.52	-1.02	1.15	0.45	0.07	647.27	

# SDT Survey Report

<b>Company:</b>	Occidental Petroleum_Rockies	<b>Local Co-ordinate Reference:</b>	Well Glade West
<b>Project:</b>	WELD-NAD83-UTMFT13N	<b>TVD Reference:</b>	4900+28 @ 4928.00usft (Precision 580)
<b>Site:</b>	Glade 3N-66W-02 Pad	<b>MD Reference:</b>	4900+28 @ 4928.00usft (Precision 580)
<b>Well:</b>	Glade West	<b>North Reference:</b>	True
<b>Wellbore:</b>	OH	<b>Survey Calculation Method:</b>	Minimum Curvature
<b>Design:</b>	OH	<b>Database:</b>	EDM 5000 Multi User Db

Survey										
Measured Depth (usft)	Inclination (°)	Azimuth (°)	Vertical Depth (usft)	+N/-S (usft)	+E/-W (usft)	Vertical Section (usft)	Dogleg Rate (°/100usft)	Build Rate (°/100usft)	Turn Rate (°/100usft)	
7,920.00	0.02	268.29	7,920.00	1.51	-1.02	1.16	0.29	-0.20	412.20	
7,935.00	0.04	331.36	7,935.00	1.52	-1.03	1.16	0.24	0.13	420.47	
7,950.00	0.07	35.99	7,950.00	1.53	-1.02	1.16	0.43	0.20	430.87	
7,965.00	0.06	344.61	7,965.00	1.55	-1.02	1.16	0.38	-0.07	-342.53	
7,980.00	0.06	288.40	7,980.00	1.56	-1.03	1.17	0.38	0.00	-374.73	
7,995.00	0.09	244.66	7,995.00	1.55	-1.05	1.19	0.42	0.20	-291.60	
8,010.00	0.04	281.26	8,010.00	1.55	-1.06	1.20	0.42	-0.33	244.00	
8,025.00	0.06	305.87	8,025.00	1.55	-1.07	1.21	0.19	0.13	164.07	
8,040.00	0.03	283.93	8,040.00	1.56	-1.08	1.22	0.23	-0.20	-146.27	
8,055.00	0.04	356.88	8,055.00	1.57	-1.09	1.23	0.28	0.07	486.33	
8,070.00	0.03	46.89	8,070.00	1.57	-1.09	1.23	0.21	-0.07	333.40	
8,085.00	0.05	14.32	8,085.00	1.58	-1.08	1.22	0.20	0.13	-217.13	
8,100.00	0.02	194.74	8,100.00	1.59	-1.08	1.22	0.47	-0.20	-1,197.20	
8,115.00	0.04	121.72	8,115.00	1.58	-1.08	1.22	0.26	0.13	-486.80	
8,130.00	0.07	159.13	8,130.00	1.57	-1.07	1.21	0.30	0.20	249.40	
8,145.00	0.08	217.63	8,145.00	1.55	-1.07	1.21	0.49	0.07	390.00	
8,160.00	0.12	230.57	8,160.00	1.54	-1.09	1.23	0.30	0.27	86.27	
8,175.00	0.04	234.46	8,175.00	1.52	-1.11	1.24	0.53	-0.53	25.93	
8,190.00	0.09	140.28	8,190.00	1.51	-1.10	1.24	0.67	0.33	-627.87	
8,205.00	0.13	177.52	8,205.00	1.48	-1.10	1.23	0.53	0.27	248.27	
8,220.00	0.06	180.99	8,220.00	1.46	-1.10	1.23	0.47	-0.47	23.13	
8,235.00	0.06	181.83	8,235.00	1.44	-1.10	1.22	0.01	0.00	5.60	
8,250.00	0.04	183.75	8,250.00	1.43	-1.10	1.22	0.13	-0.13	12.80	
8,265.00	0.07	207.65	8,265.00	1.42	-1.10	1.23	0.25	0.20	159.33	
8,280.00	0.16	132.15	8,280.00	1.39	-1.09	1.21	1.05	0.60	-503.33	
8,295.00	0.16	167.21	8,295.00	1.36	-1.07	1.19	0.64	0.00	233.73	
8,310.00	0.11	183.61	8,310.00	1.33	-1.07	1.18	0.42	-0.33	109.33	
8,325.00	0.13	178.22	8,325.00	1.29	-1.07	1.18	0.15	0.13	-35.93	
8,340.00	0.14	187.28	8,340.00	1.26	-1.07	1.18	0.16	0.07	60.40	
8,355.00	0.17	186.19	8,355.00	1.22	-1.07	1.18	0.20	0.20	-7.27	
8,370.00	0.14	210.29	8,370.00	1.18	-1.08	1.19	0.47	-0.20	160.67	
8,385.00	0.18	183.80	8,385.00	1.14	-1.10	1.20	0.55	0.27	-176.60	
8,400.00	0.19	177.38	8,400.00	1.09	-1.10	1.19	0.15	0.07	-42.80	
8,415.00	0.19	166.25	8,415.00	1.04	-1.09	1.18	0.25	0.00	-74.20	
8,430.00	0.14	172.51	8,430.00	1.00	-1.08	1.17	0.35	-0.33	41.73	
8,445.00	0.18	180.62	8,445.00	0.96	-1.08	1.16	0.31	0.27	54.07	
8,460.00	0.09	203.61	8,460.00	0.93	-1.08	1.16	0.69	-0.60	153.27	
8,475.00	0.05	181.06	8,475.00	0.91	-1.09	1.17	0.32	-0.27	-150.33	
8,490.00	0.10	185.01	8,490.00	0.89	-1.09	1.17	0.33	0.33	26.33	
8,505.00	0.11	149.51	8,505.00	0.86	-1.08	1.16	0.43	0.07	-236.67	
8,520.00	0.08	151.70	8,520.00	0.84	-1.07	1.14	0.20	-0.20	14.60	
8,535.00	0.04	113.91	8,535.00	0.83	-1.06	1.13	0.36	-0.27	-251.93	
8,550.00	0.16	102.36	8,549.99	0.82	-1.04	1.11	0.81	0.80	-77.00	

**SDT**  
Survey Report

<b>Company:</b>	Occidental Petroleum_Rockies	<b>Local Co-ordinate Reference:</b>	Well Glade West
<b>Project:</b>	WELD-NAD83-UTMFT13N	<b>TVD Reference:</b>	4900+28 @ 4928.00usft (Precision 580)
<b>Site:</b>	Glade 3N-66W-02 Pad	<b>MD Reference:</b>	4900+28 @ 4928.00usft (Precision 580)
<b>Well:</b>	Glade West	<b>North Reference:</b>	True
<b>Wellbore:</b>	OH	<b>Survey Calculation Method:</b>	Minimum Curvature
<b>Design:</b>	OH	<b>Database:</b>	EDM 5000 Multi User Db

Survey										
Measured Depth (usft)	Inclination (°)	Azimuth (°)	Vertical Depth (usft)	+N/-S (usft)	+E/-W (usft)	Vertical Section (usft)	Dogleg Rate (°/100usft)	Build Rate (°/100usft)	Turn Rate (°/100usft)	
8,565.00	0.08	113.19	8,564.99	0.81	-1.01	1.08	0.55	-0.53	72.20	
8,580.00	0.06	99.19	8,579.99	0.81	-0.99	1.06	0.17	-0.13	-93.33	
8,595.00	0.11	54.36	8,594.99	0.82	-0.97	1.04	0.53	0.33	-298.87	
8,610.00	0.12	112.70	8,609.99	0.82	-0.94	1.01	0.75	0.07	388.93	
8,625.00	0.07	73.96	8,624.99	0.82	-0.92	0.99	0.52	-0.33	-258.27	
8,640.00	0.11	59.35	8,639.99	0.83	-0.90	0.97	0.31	0.27	-97.40	
8,655.00	0.13	93.82	8,654.99	0.83	-0.87	0.94	0.49	0.13	229.80	
8,670.00	0.20	77.98	8,669.99	0.84	-0.83	0.90	0.55	0.47	-105.60	
8,685.00	0.17	69.75	8,684.99	0.85	-0.78	0.85	0.27	-0.20	-54.87	
8,700.00	0.11	68.99	8,699.99	0.86	-0.75	0.82	0.40	-0.40	-5.07	
8,715.00	0.10	330.65	8,714.99	0.88	-0.74	0.82	1.06	-0.07	-655.60	
8,730.00	0.16	295.70	8,729.99	0.90	-0.76	0.84	0.65	0.40	-233.00	
8,745.00	0.24	284.41	8,744.99	0.92	-0.81	0.89	0.59	0.53	-75.27	
8,760.00	0.33	287.67	8,759.99	0.94	-0.88	0.97	0.61	0.60	21.73	
8,775.00	0.45	291.90	8,774.99	0.97	-0.98	1.07	0.82	0.80	28.20	
8,790.00	0.52	288.58	8,789.99	1.02	-1.10	1.19	0.50	0.47	-22.13	
8,805.00	0.64	293.23	8,804.99	1.07	-1.24	1.33	0.86	0.80	31.00	
8,820.00	0.66	296.33	8,819.99	1.14	-1.40	1.49	0.27	0.13	20.67	
8,835.00	0.73	294.02	8,834.99	1.22	-1.56	1.67	0.50	0.47	-15.40	
8,850.00	0.87	292.03	8,849.99	1.30	-1.75	1.87	0.95	0.93	-13.27	
8,865.00	0.87	291.19	8,864.99	1.38	-1.96	2.08	0.09	0.00	-5.60	
8,880.00	1.01	287.41	8,879.99	1.47	-2.20	2.32	1.02	0.93	-25.20	
8,895.00	1.18	283.75	8,894.98	1.54	-2.47	2.60	1.22	1.13	-24.40	
8,910.00	1.25	281.72	8,909.98	1.61	-2.78	2.92	0.55	0.47	-13.53	
8,925.00	1.36	278.15	8,924.98	1.67	-3.12	3.26	0.91	0.73	-23.80	
8,940.00	1.39	278.04	8,939.97	1.72	-3.48	3.62	0.20	0.20	-0.73	
8,955.00	1.39	279.74	8,954.97	1.78	-3.84	3.98	0.27	0.00	11.33	
8,970.00	1.44	277.90	8,969.96	1.83	-4.20	4.35	0.45	0.33	-12.27	
8,985.00	1.51	277.22	8,984.96	1.88	-4.58	4.74	0.48	0.47	-4.53	
9,000.00	1.53	279.80	8,999.95	1.94	-4.98	5.14	0.48	0.13	17.20	
9,015.00	1.56	281.29	9,014.95	2.02	-5.38	5.54	0.33	0.20	9.93	
9,030.00	1.61	278.95	9,029.94	2.09	-5.78	5.95	0.55	0.33	-15.60	
9,045.00	1.65	279.16	9,044.93	2.16	-6.21	6.38	0.27	0.27	1.40	
9,060.00	1.58	278.59	9,059.93	2.22	-6.62	6.80	0.48	-0.47	-3.80	
9,075.00	1.70	277.25	9,074.92	2.28	-7.05	7.23	0.84	0.80	-8.93	
9,090.00	1.82	278.73	9,089.92	2.35	-7.50	7.69	0.86	0.80	9.87	
9,105.00	1.87	280.99	9,104.91	2.43	-7.98	8.17	0.59	0.33	15.07	
9,120.00	2.00	278.99	9,119.90	2.52	-8.48	8.67	0.98	0.87	-13.33	
9,135.00	2.03	279.25	9,134.89	2.60	-9.00	9.20	0.21	0.20	1.73	
9,150.00	2.11	278.50	9,149.88	2.68	-9.53	9.74	0.56	0.53	-5.00	
9,165.00	2.18	278.76	9,164.87	2.77	-10.09	10.30	0.47	0.47	1.73	
9,180.00	2.39	276.70	9,179.86	2.85	-10.68	10.90	1.50	1.40	-13.73	
9,195.00	2.58	276.52	9,194.84	2.92	-11.33	11.55	1.27	1.27	-1.20	
9,210.00	2.64	276.85	9,209.83	3.00	-12.01	12.23	0.41	0.40	2.20	

# SDT Survey Report

<b>Company:</b>	Occidental Petroleum_Rockies	<b>Local Co-ordinate Reference:</b>	Well Glade West
<b>Project:</b>	WELD-NAD83-UTMFT13N	<b>TVD Reference:</b>	4900+28 @ 4928.00usft (Precision 580)
<b>Site:</b>	Glade 3N-66W-02 Pad	<b>MD Reference:</b>	4900+28 @ 4928.00usft (Precision 580)
<b>Well:</b>	Glade West	<b>North Reference:</b>	True
<b>Wellbore:</b>	OH	<b>Survey Calculation Method:</b>	Minimum Curvature
<b>Design:</b>	OH	<b>Database:</b>	EDM 5000 Multi User Db

Survey										
Measured Depth (usft)	Inclination (°)	Azimuth (°)	Vertical Depth (usft)	+N/-S (usft)	+E/-W (usft)	Vertical Section (usft)	Dogleg Rate (°/100usft)	Build Rate (°/100usft)	Turn Rate (°/100usft)	
9,225.00	2.74	275.36	9,224.81	3.08	-12.71	12.94	0.81	0.67	-9.93	
9,240.00	2.76	275.72	9,239.79	3.15	-13.42	13.66	0.18	0.13	2.40	
9,255.00	2.78	276.22	9,254.78	3.22	-14.14	14.38	0.21	0.13	3.33	
9,270.00	2.84	275.62	9,269.76	3.30	-14.88	15.12	0.45	0.40	-4.00	
9,285.00	2.87	276.51	9,284.74	3.38	-15.62	15.86	0.36	0.20	5.93	
9,300.00	2.83	275.97	9,299.72	3.46	-16.36	16.61	0.32	-0.27	-3.60	
9,315.00	2.90	276.91	9,314.70	3.54	-17.10	17.36	0.56	0.47	6.27	
9,330.00	2.87	274.98	9,329.68	3.62	-17.86	18.11	0.68	-0.20	-12.87	
9,345.00	2.86	275.83	9,344.66	3.69	-18.60	18.86	0.29	-0.07	5.67	
9,360.00	2.80	276.46	9,359.65	3.77	-19.34	19.60	0.45	-0.40	4.20	
9,375.00	2.91	274.60	9,374.63	3.84	-20.08	20.35	0.96	0.73	-12.40	
9,390.00	2.84	275.79	9,389.61	3.91	-20.83	21.10	0.61	-0.47	7.93	
9,405.00	2.80	275.95	9,404.59	3.98	-21.57	21.84	0.27	-0.27	1.07	
9,420.00	2.78	275.76	9,419.57	4.06	-22.29	22.57	0.15	-0.13	-1.27	
9,435.00	2.72	276.73	9,434.56	4.14	-23.01	23.29	0.51	-0.40	6.47	
9,450.00	2.71	276.47	9,449.54	4.22	-23.71	24.00	0.11	-0.07	-1.73	
9,465.00	2.73	276.23	9,464.52	4.30	-24.42	24.71	0.15	0.13	-1.60	
9,480.00	2.67	276.69	9,479.51	4.38	-25.12	25.42	0.43	-0.40	3.07	
9,495.00	2.71	275.67	9,494.49	4.45	-25.82	26.12	0.42	0.27	-6.80	
9,510.00	2.77	274.81	9,509.47	4.52	-26.54	26.84	0.48	0.40	-5.73	
9,525.00	2.70	275.91	9,524.45	4.58	-27.25	27.56	0.58	-0.47	7.33	
9,540.00	2.77	275.22	9,539.44	4.65	-27.96	28.27	0.52	0.47	-4.60	
9,555.00	2.85	275.06	9,554.42	4.72	-28.69	29.01	0.54	0.53	-1.07	
9,570.00	2.75	273.94	9,569.40	4.78	-29.42	29.74	0.76	-0.67	-7.47	
9,585.00	2.78	275.85	9,584.38	4.84	-30.14	30.46	0.65	0.20	12.73	
9,600.00	2.70	276.86	9,599.37	4.92	-30.86	31.18	0.62	-0.53	6.73	
9,615.00	2.71	274.20	9,614.35	4.99	-31.56	31.89	0.84	0.07	-17.73	
9,630.00	2.87	275.56	9,629.33	5.05	-32.29	32.62	1.15	1.07	9.07	
9,645.00	2.96	275.00	9,644.31	5.12	-33.05	33.38	0.63	0.60	-3.73	
9,660.00	3.00	274.02	9,659.29	5.18	-33.83	34.16	0.43	0.27	-6.53	
9,675.00	2.92	274.22	9,674.27	5.24	-34.60	34.93	0.54	-0.53	1.33	
9,690.00	2.92	273.31	9,689.25	5.29	-35.36	35.70	0.31	0.00	-6.07	
9,705.00	2.92	273.68	9,704.23	5.33	-36.12	36.46	0.13	0.00	2.47	
9,720.00	2.93	275.17	9,719.21	5.39	-36.89	37.23	0.51	0.07	9.93	
9,735.00	2.95	274.05	9,734.19	5.45	-37.65	38.00	0.41	0.13	-7.47	
9,750.00	2.97	275.13	9,749.17	5.52	-38.43	38.77	0.39	0.13	7.20	
9,765.00	2.91	276.99	9,764.15	5.60	-39.19	39.54	0.75	-0.40	12.40	
9,780.00	2.89	276.87	9,779.14	5.69	-39.94	40.30	0.14	-0.13	-0.80	
9,795.00	2.91	275.27	9,794.12	5.77	-40.70	41.06	0.56	0.13	-10.67	
9,810.00	2.99	274.25	9,809.10	5.83	-41.47	41.83	0.64	0.53	-6.80	
9,825.00	3.02	274.98	9,824.08	5.90	-42.25	42.62	0.32	0.20	4.87	
9,840.00	2.98	274.95	9,839.06	5.96	-43.03	43.40	0.27	-0.27	-0.20	
9,855.00	2.89	275.07	9,854.04	6.03	-43.80	44.17	0.60	-0.60	0.80	

**SDT**  
Survey Report

<b>Company:</b>	Occidental Petroleum_Rockies	<b>Local Co-ordinate Reference:</b>	Well Glade West
<b>Project:</b>	WELD-NAD83-UTMFT13N	<b>TVD Reference:</b>	4900+28 @ 4928.00usft (Precision 580)
<b>Site:</b>	Glade 3N-66W-02 Pad	<b>MD Reference:</b>	4900+28 @ 4928.00usft (Precision 580)
<b>Well:</b>	Glade West	<b>North Reference:</b>	True
<b>Wellbore:</b>	OH	<b>Survey Calculation Method:</b>	Minimum Curvature
<b>Design:</b>	OH	<b>Database:</b>	EDM 5000 Multi User Db

Survey										
Measured Depth (usft)	Inclination (°)	Azimuth (°)	Vertical Depth (usft)	+N/-S (usft)	+E/-W (usft)	Vertical Section (usft)	Dogleg Rate (°/100usft)	Build Rate (°/100usft)	Turn Rate (°/100usft)	
9,870.00	2.95	275.53	9,869.02	6.10	-44.56	44.93	0.43	0.40	3.07	
9,885.00	3.02	273.73	9,884.00	6.16	-45.34	45.71	0.78	0.47	-12.00	
9,900.00	2.95	274.80	9,898.98	6.22	-46.12	46.49	0.60	-0.47	7.13	
9,915.00	2.95	274.36	9,913.96	6.28	-46.89	47.27	0.15	0.00	-2.93	
9,930.00	2.99	274.53	9,928.94	6.34	-47.66	48.04	0.27	0.27	1.13	
9,945.00	2.99	272.78	9,943.92	6.39	-48.44	48.83	0.61	0.00	-11.67	
9,960.00	2.96	273.65	9,958.89	6.44	-49.22	49.60	0.36	-0.20	5.80	
9,975.00	2.87	275.37	9,973.88	6.50	-49.98	50.37	0.84	-0.60	11.47	
9,990.00	2.81	275.69	9,988.86	6.57	-50.72	51.11	0.41	-0.40	2.13	
10,005.00	2.86	274.55	10,003.84	6.64	-51.46	51.85	0.50	0.33	-7.60	
10,020.00	2.96	273.17	10,018.82	6.69	-52.22	52.61	0.81	0.67	-9.20	
10,035.00	2.90	275.30	10,033.80	6.74	-52.98	53.38	0.83	-0.40	14.20	
10,050.00	2.89	274.19	10,048.78	6.81	-53.74	54.14	0.38	-0.07	-7.40	
10,065.00	2.82	274.32	10,063.76	6.86	-54.48	54.88	0.47	-0.47	0.87	
10,080.00	2.84	273.20	10,078.74	6.91	-55.22	55.62	0.39	0.13	-7.47	
10,095.00	2.89	272.16	10,093.72	6.94	-55.97	56.37	0.48	0.33	-6.93	
10,110.00	2.87	271.10	10,108.71	6.97	-56.72	57.12	0.38	-0.13	-7.07	
10,125.00	2.78	270.69	10,123.69	6.98	-57.46	57.86	0.61	-0.60	-2.73	
10,140.00	2.83	271.30	10,138.67	6.99	-58.20	58.59	0.39	0.33	4.07	
10,155.00	2.73	271.35	10,153.65	7.01	-58.92	59.32	0.67	-0.67	0.33	
10,170.00	2.73	271.85	10,168.64	7.03	-59.64	60.03	0.16	0.00	3.33	
10,185.00	2.67	272.64	10,183.62	7.06	-60.34	60.74	0.47	-0.40	5.27	
10,200.00	2.59	272.22	10,198.60	7.08	-61.03	61.43	0.55	-0.53	-2.80	
10,215.00	2.66	272.12	10,213.59	7.11	-61.72	62.11	0.47	0.47	-0.67	
10,230.00	2.55	273.79	10,228.57	7.15	-62.40	62.79	0.89	-0.73	11.13	
10,245.00	2.49	273.35	10,243.56	7.19	-63.06	63.45	0.42	-0.40	-2.93	
10,260.00	2.48	271.60	10,258.54	7.21	-63.71	64.10	0.51	-0.07	-11.67	
10,275.00	2.52	271.20	10,273.53	7.23	-64.36	64.75	0.29	0.27	-2.67	
10,290.00	2.54	272.46	10,288.51	7.25	-65.02	65.42	0.39	0.13	8.40	
10,305.00	2.51	273.28	10,303.50	7.28	-65.68	66.08	0.31	-0.20	5.47	
10,320.00	2.42	273.26	10,318.49	7.32	-66.33	66.72	0.60	-0.60	-0.13	
10,335.00	2.34	274.15	10,333.47	7.36	-66.95	67.34	0.59	-0.53	5.93	
10,350.00	2.35	273.64	10,348.46	7.40	-67.56	67.96	0.15	0.07	-3.40	
10,365.00	2.22	271.30	10,363.45	7.43	-68.16	68.55	1.07	-0.87	-15.60	
10,380.00	2.25	272.44	10,378.44	7.45	-68.74	69.14	0.36	0.20	7.60	
10,395.00	2.23	274.97	10,393.43	7.49	-69.33	69.72	0.67	-0.13	16.87	
10,410.00	2.20	276.02	10,408.41	7.54	-69.91	70.30	0.34	-0.20	7.00	
10,425.00	2.22	274.53	10,423.40	7.59	-70.48	70.88	0.41	0.13	-9.93	
10,440.00	2.26	274.21	10,438.39	7.64	-71.07	71.47	0.28	0.27	-2.13	
10,455.00	2.27	272.92	10,453.38	7.68	-71.66	72.06	0.35	0.07	-8.60	
10,470.00	2.23	273.90	10,468.37	7.71	-72.25	72.65	0.37	-0.27	6.53	
10,485.00	2.20	275.52	10,483.36	7.76	-72.82	73.23	0.46	-0.20	10.80	
10,500.00	2.13	275.49	10,498.35	7.81	-73.39	73.80	0.47	-0.47	-0.20	

**SDT**  
Survey Report

<b>Company:</b>	Occidental Petroleum_Rockies	<b>Local Co-ordinate Reference:</b>	Well Glade West
<b>Project:</b>	WELD-NAD83-UTMFT13N	<b>TVD Reference:</b>	4900+28 @ 4928.00usft (Precision 580)
<b>Site:</b>	Glade 3N-66W-02 Pad	<b>MD Reference:</b>	4900+28 @ 4928.00usft (Precision 580)
<b>Well:</b>	Glade West	<b>North Reference:</b>	True
<b>Wellbore:</b>	OH	<b>Survey Calculation Method:</b>	Minimum Curvature
<b>Design:</b>	OH	<b>Database:</b>	EDM 5000 Multi User Db

Survey										
Measured Depth (usft)	Inclination (°)	Azimuth (°)	Vertical Depth (usft)	+N/-S (usft)	+E/-W (usft)	Vertical Section (usft)	Dogleg Rate (°/100usft)	Build Rate (°/100usft)	Turn Rate (°/100usft)	
10,515.00	2.20	274.29	10,513.34	7.86	-73.95	74.36	0.56	0.47	-8.00	
10,530.00	2.25	273.91	10,528.32	7.90	-74.53	74.94	0.35	0.33	-2.53	
10,545.00	2.23	275.73	10,543.31	7.95	-75.12	75.53	0.49	-0.13	12.13	
10,560.00	2.24	274.37	10,558.30	8.00	-75.70	76.12	0.36	0.07	-9.07	
10,575.00	2.30	274.14	10,573.29	8.05	-76.29	76.71	0.40	0.40	-1.53	
10,590.00	2.31	273.92	10,588.28	8.09	-76.89	77.31	0.09	0.07	-1.47	
10,605.00	2.18	274.01	10,603.27	8.13	-77.48	77.90	0.87	-0.87	0.60	
10,620.00	2.14	273.43	10,618.26	8.17	-78.04	78.46	0.30	-0.27	-3.87	
10,635.00	2.13	273.52	10,633.24	8.20	-78.60	79.02	0.07	-0.07	0.60	
10,650.00	2.27	273.82	10,648.23	8.24	-79.18	79.60	0.94	0.93	2.00	
10,665.00	2.36	273.16	10,663.22	8.28	-79.78	80.20	0.63	0.60	-4.40	
10,680.00	2.35	273.02	10,678.21	8.31	-80.40	80.82	0.08	-0.07	-0.93	
10,695.00	2.25	273.13	10,693.20	8.34	-81.00	81.42	0.67	-0.67	0.73	
10,710.00	2.17	273.49	10,708.19	8.37	-81.58	82.00	0.54	-0.53	2.40	
10,725.00	2.26	272.67	10,723.17	8.41	-82.15	82.58	0.64	0.60	-5.47	
10,740.00	2.39	271.65	10,738.16	8.43	-82.76	83.19	0.91	0.87	-6.80	
10,755.00	2.31	271.32	10,753.15	8.44	-83.38	83.80	0.54	-0.53	-2.20	
10,770.00	2.42	271.15	10,768.14	8.46	-84.00	84.42	0.73	0.73	-1.13	
10,785.00	2.56	272.13	10,783.12	8.48	-84.65	85.07	0.98	0.93	6.53	
10,800.00	2.51	272.16	10,798.11	8.50	-85.31	85.73	0.33	-0.33	0.20	
10,815.00	2.40	272.83	10,813.09	8.53	-85.95	86.37	0.76	-0.73	4.47	
10,830.00	2.36	272.65	10,828.08	8.56	-86.57	86.99	0.27	-0.27	-1.20	
10,845.00	2.36	271.00	10,843.07	8.58	-87.19	87.61	0.45	0.00	-11.00	
10,860.00	2.36	268.62	10,858.06	8.58	-87.81	88.23	0.65	0.00	-15.87	
10,875.00	2.27	269.74	10,873.04	8.57	-88.42	88.83	0.67	-0.60	7.47	
10,890.00	2.24	269.58	10,888.03	8.56	-89.01	89.42	0.20	-0.20	-1.07	
10,905.00	2.37	266.02	10,903.02	8.54	-89.61	90.01	1.29	0.87	-23.73	
10,920.00	2.28	267.17	10,918.01	8.50	-90.22	90.62	0.68	-0.60	7.67	
10,935.00	2.23	269.91	10,933.00	8.49	-90.81	91.20	0.79	-0.33	18.27	
10,950.00	2.18	271.08	10,947.98	8.49	-91.38	91.78	0.45	-0.33	7.80	
10,965.00	2.31	270.25	10,962.97	8.50	-91.97	92.36	0.89	0.87	-5.53	
10,980.00	2.36	269.91	10,977.96	8.50	-92.58	92.97	0.35	0.33	-2.27	
10,995.00	2.27	269.85	10,992.95	8.50	-93.19	93.57	0.60	-0.60	-0.40	
11,010.00	2.21	271.75	11,007.94	8.51	-93.77	94.16	0.64	-0.40	12.67	
11,021.70	2.28	271.22	11,019.63	8.52	-94.23	94.62	0.63	0.60	-4.57	
<b>Top Prod @ 11021.70' MD / 1339' FEL &amp; 2141' FSL</b>										
11,025.00	2.30	271.07	11,022.93	8.52	-94.36	94.75	0.63	0.60	-4.39	
11,040.00	2.23	270.60	11,037.91	8.53	-94.96	95.34	0.48	-0.47	-3.13	
11,055.00	2.19	271.51	11,052.90	8.54	-95.53	95.91	0.35	-0.27	6.07	
11,070.00	2.30	271.32	11,067.89	8.56	-96.12	96.50	0.74	0.73	-1.27	
11,085.00	2.23	273.60	11,082.88	8.58	-96.71	97.09	0.76	-0.47	15.20	
11,100.00	2.11	281.84	11,097.87	8.66	-97.28	97.66	2.23	-0.80	54.93	
11,115.00	2.17	280.06	11,112.86	8.76	-97.82	98.22	0.60	0.40	-11.87	
11,130.00	2.11	283.66	11,127.85	8.88	-98.37	98.77	0.98	-0.40	24.00	

**SDT**  
Survey Report

<b>Company:</b>	Occidental Petroleum_Rockies	<b>Local Co-ordinate Reference:</b>	Well Glade West
<b>Project:</b>	WELD-NAD83-UTMFT13N	<b>TVD Reference:</b>	4900+28 @ 4928.00usft (Precision 580)
<b>Site:</b>	Glade 3N-66W-02 Pad	<b>MD Reference:</b>	4900+28 @ 4928.00usft (Precision 580)
<b>Well:</b>	Glade West	<b>North Reference:</b>	True
<b>Wellbore:</b>	OH	<b>Survey Calculation Method:</b>	Minimum Curvature
<b>Design:</b>	OH	<b>Database:</b>	EDM 5000 Multi User Db

Survey										
Measured Depth (usft)	Inclination (°)	Azimuth (°)	Vertical Depth (usft)	+N/-S (usft)	+E/-W (usft)	Vertical Section (usft)	Dogleg Rate (°/100usft)	Build Rate (°/100usft)	Turn Rate (°/100usft)	
11,145.00	2.19	286.05	11,142.84	9.02	-98.92	99.33	0.80	0.53	15.93	
11,160.00	2.15	284.81	11,157.83	9.17	-99.46	99.89	0.41	-0.27	-8.27	
11,175.00	2.48	288.40	11,172.81	9.35	-100.04	100.48	2.40	2.20	23.93	
11,190.00	3.26	291.75	11,187.80	9.61	-100.75	101.20	5.32	5.20	22.33	
11,205.00	3.95	291.98	11,202.77	9.96	-101.62	102.11	4.60	4.60	1.53	
11,220.00	4.06	291.16	11,217.73	10.34	-102.60	103.11	0.83	0.73	-5.47	
11,235.00	4.05	291.60	11,232.69	10.73	-103.59	104.13	0.22	-0.07	2.93	
11,250.00	4.13	292.00	11,247.65	11.13	-104.58	105.16	0.57	0.53	2.67	
11,265.00	4.33	289.39	11,262.61	11.52	-105.61	106.23	1.85	1.33	-17.40	
11,280.00	4.78	286.84	11,277.56	11.89	-106.75	107.39	3.29	3.00	-17.00	
11,295.00	5.28	284.69	11,292.51	12.24	-108.01	108.68	3.56	3.33	-14.33	
11,310.00	5.30	283.57	11,307.44	12.58	-109.35	110.05	0.70	0.13	-7.47	
11,325.00	5.30	284.44	11,322.38	12.92	-110.70	111.42	0.54	0.00	5.80	
11,340.00	5.33	283.70	11,337.31	13.25	-112.04	112.79	0.50	0.20	-4.93	
11,355.00	5.28	284.18	11,352.25	13.59	-113.39	114.16	0.45	-0.33	3.20	
11,370.00	5.40	283.50	11,367.18	13.92	-114.75	115.54	0.90	0.80	-4.53	
11,385.00	5.35	284.15	11,382.12	14.26	-116.11	116.93	0.53	-0.33	4.33	
11,400.00	5.32	284.71	11,397.05	14.61	-117.46	118.31	0.40	-0.20	3.73	
11,415.00	5.34	283.87	11,411.99	14.95	-118.81	119.68	0.54	0.13	-5.60	
11,430.00	5.42	283.53	11,426.92	15.28	-120.18	121.08	0.57	0.53	-2.27	
11,445.00	5.42	284.42	11,441.86	15.62	-121.55	122.48	0.56	0.00	5.93	
11,460.00	5.44	283.19	11,456.79	15.96	-122.93	123.88	0.79	0.13	-8.20	
11,475.00	5.75	282.93	11,471.72	16.29	-124.36	125.33	2.07	2.07	-1.73	
11,490.00	6.22	281.40	11,486.64	16.62	-125.88	126.88	3.31	3.13	-10.20	
11,505.00	6.25	281.35	11,501.55	16.94	-127.48	128.50	0.20	0.20	-0.33	
11,520.00	6.35	281.12	11,516.46	17.26	-129.10	130.14	0.69	0.67	-1.53	
11,535.00	6.30	281.37	11,531.36	17.59	-130.72	131.78	0.38	-0.33	1.67	
11,550.00	6.31	281.27	11,546.27	17.91	-132.33	133.42	0.10	0.07	-0.67	
11,565.00	6.37	280.60	11,561.18	18.22	-133.96	135.07	0.64	0.40	-4.47	
11,580.00	6.34	280.77	11,576.09	18.53	-135.59	136.72	0.24	-0.20	1.13	
11,595.00	6.38	281.27	11,591.00	18.85	-137.22	138.37	0.46	0.27	3.33	
11,610.00	6.34	280.34	11,605.91	19.16	-138.85	140.03	0.74	-0.27	-6.20	
11,625.00	6.27	281.33	11,620.81	19.47	-140.47	141.67	0.86	-0.47	6.60	
11,640.00	6.24	281.73	11,635.73	19.80	-142.07	143.29	0.35	-0.20	2.67	
11,655.00	6.16	281.96	11,650.64	20.13	-143.66	144.90	0.56	-0.53	1.53	
11,670.00	6.16	281.73	11,665.55	20.46	-145.23	146.50	0.16	0.00	-1.53	
11,685.00	6.19	281.37	11,680.46	20.78	-146.81	148.11	0.33	0.20	-2.40	
11,700.00	6.21	281.05	11,695.38	21.10	-148.40	149.72	0.27	0.13	-2.13	
11,715.00	6.22	281.24	11,710.29	21.41	-150.00	151.33	0.15	0.07	1.27	
11,730.00	6.24	281.13	11,725.20	21.73	-151.59	152.95	0.16	0.13	-0.73	
11,745.00	6.56	277.69	11,740.11	22.00	-153.24	154.62	3.33	2.13	-22.93	
11,760.00	6.96	274.61	11,755.00	22.19	-155.00	156.38	3.60	2.67	-20.53	
11,775.00	7.11	273.57	11,769.89	22.32	-156.83	158.22	1.31	1.00	-6.93	

**SDT**  
Survey Report

<b>Company:</b>	Occidental Petroleum_Rockies	<b>Local Co-ordinate Reference:</b>	Well Glade West
<b>Project:</b>	WELD-NAD83-UTMFT13N	<b>TVD Reference:</b>	4900+28 @ 4928.00usft (Precision 580)
<b>Site:</b>	Glade 3N-66W-02 Pad	<b>MD Reference:</b>	4900+28 @ 4928.00usft (Precision 580)
<b>Well:</b>	Glade West	<b>North Reference:</b>	True
<b>Wellbore:</b>	OH	<b>Survey Calculation Method:</b>	Minimum Curvature
<b>Design:</b>	OH	<b>Database:</b>	EDM 5000 Multi User Db

Survey										
Measured Depth (usft)	Inclination (°)	Azimuth (°)	Vertical Depth (usft)	+N/S (usft)	+E/W (usft)	Vertical Section (usft)	Dogleg Rate (°/100usft)	Build Rate (°/100usft)	Turn Rate (°/100usft)	
11,790.00	7.11	274.07	11,784.77	22.44	-158.68	160.08	0.41	0.00	3.33	
11,805.00	7.10	274.05	11,799.66	22.57	-160.53	161.93	0.07	-0.07	-0.13	
11,820.00	7.11	273.65	11,814.54	22.70	-162.38	163.79	0.34	0.07	-2.67	
11,835.00	7.05	274.18	11,829.43	22.82	-164.23	165.63	0.59	-0.40	3.53	
11,850.00	7.11	273.63	11,844.31	22.95	-166.07	167.48	0.60	0.40	-3.67	
11,865.00	7.15	273.33	11,859.20	23.06	-167.93	169.34	0.36	0.27	-2.00	
11,880.00	6.93	274.41	11,874.09	23.19	-169.77	171.18	1.71	-1.47	7.20	
11,895.00	6.85	274.24	11,888.98	23.32	-171.56	172.98	0.55	-0.53	-1.13	
11,910.00	6.78	274.16	11,903.87	23.45	-173.34	174.76	0.47	-0.47	-0.53	
11,925.00	6.52	274.87	11,918.77	23.59	-175.07	176.50	1.82	-1.73	4.73	
11,940.00	6.51	275.15	11,933.67	23.74	-176.76	178.20	0.22	-0.07	1.87	
11,955.00	6.35	275.56	11,948.58	23.90	-178.43	179.88	1.11	-1.07	2.73	
11,970.00	6.20	276.50	11,963.49	24.07	-180.07	181.52	1.21	-1.00	6.27	
11,985.00	6.12	276.48	11,978.40	24.25	-181.66	183.13	0.53	-0.53	-0.13	
12,000.00	6.02	277.53	11,993.32	24.44	-183.24	184.71	1.00	-0.67	7.00	
12,015.00	5.96	278.02	12,008.24	24.65	-184.79	186.28	0.53	-0.40	3.27	
12,030.00	5.91	278.66	12,023.16	24.88	-186.32	187.82	0.55	-0.33	4.27	
12,045.00	5.96	278.55	12,038.08	25.11	-187.86	189.37	0.34	0.33	-0.73	
12,060.00	5.97	278.43	12,052.99	25.34	-189.40	190.93	0.11	0.07	-0.80	
12,075.00	5.94	278.36	12,067.91	25.57	-190.94	192.48	0.21	-0.20	-0.47	
12,090.00	5.87	278.74	12,082.83	25.80	-192.47	194.02	0.53	-0.47	2.53	
12,105.00	5.85	278.48	12,097.76	26.03	-193.98	195.55	0.22	-0.13	-1.73	
12,120.00	5.77	278.67	12,112.68	26.25	-195.48	197.07	0.55	-0.53	1.27	
12,135.00	5.78	279.44	12,127.60	26.49	-196.97	198.57	0.52	0.07	5.13	
12,150.00	5.80	279.74	12,142.53	26.74	-198.46	200.08	0.24	0.13	2.00	
12,165.00	5.81	280.23	12,157.45	27.01	-199.96	201.60	0.34	0.07	3.27	
12,180.00	5.82	280.44	12,172.37	27.28	-201.45	203.11	0.16	0.07	1.40	
12,195.00	5.85	280.63	12,187.29	27.56	-202.95	204.63	0.24	0.20	1.27	
12,210.00	5.92	279.80	12,202.22	27.83	-204.47	206.16	0.73	0.47	-5.53	
12,225.00	5.85	280.02	12,217.14	28.10	-205.98	207.69	0.49	-0.47	1.47	
12,240.00	5.79	280.10	12,232.06	28.36	-207.48	209.21	0.40	-0.40	0.53	
12,255.00	5.76	280.23	12,246.98	28.63	-208.96	210.71	0.22	-0.20	0.87	
12,270.00	5.79	280.24	12,261.91	28.90	-210.45	212.22	0.20	0.20	0.07	
12,285.00	5.82	280.32	12,276.83	29.17	-211.94	213.73	0.21	0.20	0.53	
12,300.00	5.84	280.32	12,291.75	29.44	-213.44	215.25	0.13	0.13	0.00	
12,315.00	5.84	280.17	12,306.67	29.71	-214.94	216.77	0.10	0.00	-1.00	
12,330.00	5.96	278.83	12,321.59	29.96	-216.46	218.30	1.22	0.80	-8.93	
12,345.00	6.14	275.62	12,336.51	30.16	-218.03	219.88	2.55	1.20	-21.40	
12,360.00	6.23	274.62	12,351.42	30.31	-219.64	221.50	0.94	0.60	-6.67	
12,375.00	6.27	274.55	12,366.33	30.44	-221.27	223.13	0.27	0.27	-0.47	
12,390.00	6.26	274.78	12,381.25	30.57	-222.90	224.77	0.18	-0.07	1.53	
12,405.00	6.27	274.48	12,396.16	30.70	-224.53	226.41	0.23	0.07	-2.00	
12,420.00	6.32	274.00	12,411.07	30.82	-226.17	228.05	0.48	0.33	-3.20	

# SDT Survey Report

<b>Company:</b>	Occidental Petroleum_Rockies	<b>Local Co-ordinate Reference:</b>	Well Glade West
<b>Project:</b>	WELD-NAD83-UTMFT13N	<b>TVD Reference:</b>	4900+28 @ 4928.00usft (Precision 580)
<b>Site:</b>	Glade 3N-66W-02 Pad	<b>MD Reference:</b>	4900+28 @ 4928.00usft (Precision 580)
<b>Well:</b>	Glade West	<b>North Reference:</b>	True
<b>Wellbore:</b>	OH	<b>Survey Calculation Method:</b>	Minimum Curvature
<b>Design:</b>	OH	<b>Database:</b>	EDM 5000 Multi User Db

Survey										
Measured Depth (usft)	Inclination (°)	Azimuth (°)	Vertical Depth (usft)	+N/-S (usft)	+E/-W (usft)	Vertical Section (usft)	Dogleg Rate (°/100usft)	Build Rate (°/100usft)	Turn Rate (°/100usft)	
12,435.00	6.23	274.45	12,425.98	30.95	-227.81	229.69	0.68	-0.60	3.00	
12,450.00	6.17	274.31	12,440.89	31.07	-229.42	231.31	0.41	-0.40	-0.93	
12,465.00	6.16	274.01	12,455.80	31.19	-231.03	232.92	0.22	-0.07	-2.00	
12,480.00	6.10	273.57	12,470.71	31.29	-232.63	234.52	0.51	-0.40	-2.93	
12,495.00	6.16	273.45	12,485.63	31.39	-234.23	236.12	0.41	0.40	-0.80	
12,510.00	6.16	273.49	12,500.54	31.49	-235.83	237.73	0.03	0.00	0.27	
12,525.00	6.14	273.35	12,515.46	31.58	-237.44	239.34	0.17	-0.13	-0.93	
12,540.00	6.14	273.53	12,530.37	31.68	-239.04	240.94	0.13	0.00	1.20	
12,555.00	6.20	272.19	12,545.28	31.76	-240.65	242.55	1.04	0.40	-8.93	
12,570.00	6.14	271.91	12,560.20	31.82	-242.26	244.16	0.45	-0.40	-1.87	
12,585.00	6.18	271.80	12,575.11	31.87	-243.87	245.77	0.28	0.27	-0.73	
12,600.00	6.12	272.32	12,590.02	31.93	-245.47	247.37	0.55	-0.40	3.47	
12,615.00	6.13	272.62	12,604.94	32.00	-247.07	248.97	0.22	0.07	2.00	
12,630.00	6.11	272.26	12,619.85	32.06	-248.67	250.57	0.29	-0.13	-2.40	
12,645.00	6.07	272.94	12,634.77	32.14	-250.26	252.16	0.55	-0.27	4.53	
12,660.00	6.06	273.39	12,649.68	32.22	-251.84	253.74	0.32	-0.07	3.00	
12,675.00	6.02	273.41	12,664.60	32.32	-253.42	255.32	0.27	-0.27	0.13	
12,690.00	5.98	274.67	12,679.52	32.43	-254.98	256.89	0.92	-0.27	8.40	
12,705.00	6.07	275.03	12,694.44	32.56	-256.55	258.46	0.65	0.60	2.40	
12,720.00	6.07	275.72	12,709.35	32.71	-258.13	260.05	0.49	0.00	4.60	
12,735.00	5.97	275.60	12,724.27	32.86	-259.70	261.62	0.67	-0.67	-0.80	
12,750.00	5.92	275.99	12,739.19	33.02	-261.24	263.17	0.43	-0.33	2.60	
12,765.00	5.82	276.54	12,754.11	33.19	-262.77	264.71	0.76	-0.67	3.67	
12,780.00	5.67	279.01	12,769.03	33.39	-264.25	266.21	1.93	-1.00	16.47	
12,795.00	5.71	278.11	12,783.96	33.61	-265.72	267.69	0.65	0.27	-6.00	
12,810.00	5.66	278.48	12,798.89	33.83	-267.19	269.18	0.41	-0.33	2.47	
12,825.00	5.67	278.23	12,813.81	34.04	-268.66	270.65	0.18	0.07	-1.67	
12,840.00	5.72	278.73	12,828.74	34.26	-270.13	272.14	0.47	0.33	3.33	
12,855.00	5.78	278.56	12,843.66	34.49	-271.62	273.64	0.42	0.40	-1.13	
12,870.00	5.85	277.63	12,858.59	34.70	-273.12	275.16	0.78	0.47	-6.20	
12,885.00	5.80	277.60	12,873.51	34.90	-274.63	276.68	0.33	-0.33	-0.20	
12,900.00	5.76	278.60	12,888.43	35.12	-276.13	278.19	0.72	-0.27	6.67	
12,915.00	5.77	278.51	12,903.36	35.34	-277.62	279.69	0.09	0.07	-0.60	
12,930.00	5.82	278.31	12,918.28	35.56	-279.11	281.20	0.36	0.33	-1.33	
12,945.00	5.74	279.10	12,933.20	35.79	-280.61	282.71	0.75	-0.53	5.27	
12,960.00	5.77	279.24	12,948.13	36.03	-282.09	284.21	0.22	0.20	0.93	
12,975.00	5.76	279.36	12,963.05	36.27	-283.58	285.72	0.10	-0.07	0.80	
12,990.00	5.75	279.18	12,977.98	36.52	-285.06	287.22	0.14	-0.07	-1.20	
13,005.00	5.79	279.36	12,992.90	36.76	-286.55	288.72	0.29	0.27	1.20	
13,020.00	5.81	279.83	13,007.82	37.01	-288.05	290.23	0.34	0.13	3.13	
13,035.00	5.83	279.97	13,022.75	37.27	-289.55	291.75	0.16	0.13	0.93	
13,050.00	5.90	279.41	13,037.67	37.53	-291.06	293.28	0.60	0.47	-3.73	
13,065.00	5.94	278.22	13,052.59	37.77	-292.59	294.82	0.86	0.27	-7.93	
13,080.00	5.85	278.35	13,067.51	37.99	-294.11	296.36	0.61	-0.60	0.87	

# SDT Survey Report

<b>Company:</b>	Occidental Petroleum_Rockies	<b>Local Co-ordinate Reference:</b>	Well Glade West
<b>Project:</b>	WELD-NAD83-UTMFT13N	<b>TVD Reference:</b>	4900+28 @ 4928.00usft (Precision 580)
<b>Site:</b>	Glade 3N-66W-02 Pad	<b>MD Reference:</b>	4900+28 @ 4928.00usft (Precision 580)
<b>Well:</b>	Glade West	<b>North Reference:</b>	True
<b>Wellbore:</b>	OH	<b>Survey Calculation Method:</b>	Minimum Curvature
<b>Design:</b>	OH	<b>Database:</b>	EDM 5000 Multi User Db

Survey										
Measured Depth (usft)	Inclination (°)	Azimuth (°)	Vertical Depth (usft)	+N/-S (usft)	+E/-W (usft)	Vertical Section (usft)	Dogleg Rate (°/100usft)	Build Rate (°/100usft)	Turn Rate (°/100usft)	
13,095.00	6.07	276.39	13,082.43	38.19	-295.65	297.92	2.00	1.47	-13.07	
13,110.00	6.45	272.11	13,097.34	38.31	-297.28	299.55	4.01	2.53	-28.53	
13,125.00	6.62	271.07	13,112.24	38.36	-298.99	301.25	1.38	1.13	-6.93	
13,140.00	6.66	270.00	13,127.14	38.37	-300.73	302.98	0.87	0.27	-7.13	
13,155.00	6.59	271.02	13,142.04	38.39	-302.46	304.71	0.91	-0.47	6.80	
13,170.00	6.63	271.06	13,156.94	38.42	-304.18	306.43	0.27	0.27	0.27	
13,185.00	6.70	270.27	13,171.84	38.44	-305.92	308.16	0.77	0.47	-5.27	
13,200.00	6.61	270.65	13,186.74	38.45	-307.66	309.90	0.67	-0.60	2.53	
13,215.00	6.60	270.87	13,201.64	38.48	-309.39	311.62	0.18	-0.07	1.47	
13,230.00	6.72	270.57	13,216.54	38.50	-311.13	313.35	0.83	0.80	-2.00	
13,245.00	6.60	270.63	13,231.44	38.52	-312.87	315.08	0.80	-0.80	0.40	
13,260.00	6.63	270.35	13,246.34	38.53	-314.59	316.81	0.29	0.20	-1.87	
13,275.00	6.64	270.20	13,261.24	38.54	-316.33	318.53	0.13	0.07	-1.00	
13,290.00	6.59	271.57	13,276.14	38.57	-318.05	320.25	1.10	-0.33	9.13	
13,305.00	6.64	271.13	13,291.04	38.61	-319.78	321.98	0.47	0.33	-2.93	
13,320.00	6.66	271.19	13,305.94	38.64	-321.52	323.71	0.14	0.13	0.40	
13,335.00	6.68	270.96	13,320.83	38.67	-323.26	325.45	0.22	0.13	-1.53	
13,350.00	6.61	271.31	13,335.73	38.71	-325.00	327.18	0.54	-0.47	2.33	
13,365.00	6.63	271.18	13,350.63	38.75	-326.72	328.90	0.17	0.13	-0.87	
13,380.00	6.60	270.92	13,365.53	38.78	-328.45	330.63	0.28	-0.20	-1.73	
13,395.00	6.51	271.66	13,380.43	38.82	-330.16	332.34	0.82	-0.60	4.93	
13,410.00	6.59	272.14	13,395.34	38.87	-331.87	334.04	0.65	0.53	3.20	
13,425.00	6.60	272.19	13,410.24	38.94	-333.60	335.76	0.08	0.07	0.33	
13,440.00	6.62	272.06	13,425.14	39.00	-335.32	337.49	0.17	0.13	-0.87	
13,455.00	6.50	272.03	13,440.04	39.06	-337.03	339.20	0.80	-0.80	-0.20	
13,470.00	6.49	272.77	13,454.94	39.13	-338.73	340.89	0.56	-0.07	4.93	
13,485.00	6.57	272.59	13,469.85	39.21	-340.43	342.60	0.55	0.53	-1.20	
13,500.00	6.51	272.28	13,484.75	39.29	-342.14	344.30	0.46	-0.40	-2.07	
13,515.00	6.26	276.32	13,499.66	39.41	-343.80	345.97	3.43	-1.67	26.93	
13,530.00	6.54	271.43	13,514.56	39.52	-345.47	347.64	4.08	1.87	-32.60	
13,545.00	6.35	273.43	13,529.47	39.59	-347.15	349.32	1.96	-1.27	13.33	
13,560.00	6.24	274.31	13,544.38	39.70	-348.79	350.97	0.98	-0.73	5.87	
13,575.00	6.10	275.29	13,559.29	39.84	-350.40	352.58	1.17	-0.93	6.53	
13,590.00	6.08	275.67	13,574.21	39.99	-351.98	354.17	0.30	-0.13	2.53	
13,605.00	6.12	274.80	13,589.12	40.14	-353.57	355.76	0.67	0.27	-5.80	
13,620.00	6.05	274.61	13,604.04	40.27	-355.15	357.35	0.49	-0.47	-1.27	
13,635.00	5.91	274.89	13,618.95	40.40	-356.71	358.92	0.95	-0.93	1.87	
13,650.00	5.91	275.38	13,633.87	40.53	-358.25	360.46	0.34	0.00	3.27	
13,665.00	5.90	275.67	13,648.80	40.68	-359.79	362.00	0.21	-0.07	1.93	
13,680.00	5.70	276.72	13,663.72	40.85	-361.29	363.52	1.51	-1.33	7.00	
13,695.00	5.73	276.28	13,678.64	41.01	-362.78	365.01	0.35	0.20	-2.93	
13,710.00	5.73	275.80	13,693.57	41.17	-364.27	366.51	0.32	0.00	-3.20	
13,725.00	5.66	276.22	13,708.49	41.33	-365.75	368.00	0.54	-0.47	2.80	

**SDT**  
Survey Report

<b>Company:</b>	Occidental Petroleum_Rockies	<b>Local Co-ordinate Reference:</b>	Well Glade West
<b>Project:</b>	WELD-NAD83-UTMFT13N	<b>TVD Reference:</b>	4900+28 @ 4928.00usft (Precision 580)
<b>Site:</b>	Glade 3N-66W-02 Pad	<b>MD Reference:</b>	4900+28 @ 4928.00usft (Precision 580)
<b>Well:</b>	Glade West	<b>North Reference:</b>	True
<b>Wellbore:</b>	OH	<b>Survey Calculation Method:</b>	Minimum Curvature
<b>Design:</b>	OH	<b>Database:</b>	EDM 5000 Multi User Db

Survey										
Measured Depth (usft)	Inclination (°)	Azimuth (°)	Vertical Depth (usft)	+N/-S (usft)	+E/-W (usft)	Vertical Section (usft)	Dogleg Rate (°/100usft)	Build Rate (°/100usft)	Turn Rate (°/100usft)	
13,740.00	5.64	276.08	13,723.42	41.49	-367.21	369.48	0.16	-0.13	-0.93	
13,755.00	5.63	276.04	13,738.35	41.64	-368.68	370.95	0.07	-0.07	-0.27	
13,770.00	5.55	276.53	13,753.28	41.80	-370.13	372.41	0.62	-0.53	3.27	
13,785.00	5.62	276.57	13,768.21	41.97	-371.58	373.87	0.47	0.47	0.27	
13,800.00	5.52	277.48	13,783.14	42.15	-373.03	375.32	0.89	-0.67	6.07	
13,815.00	5.48	278.10	13,798.07	42.34	-374.45	376.76	0.48	-0.27	4.13	
13,830.00	5.36	279.07	13,813.00	42.55	-375.85	378.17	1.01	-0.80	6.47	
13,845.00	5.35	278.89	13,827.93	42.77	-377.24	379.57	0.13	-0.07	-1.20	
13,860.00	5.27	280.75	13,842.87	43.01	-378.60	380.96	1.27	-0.53	12.40	
13,875.00	5.24	280.84	13,857.81	43.26	-379.95	382.32	0.21	-0.20	0.60	
13,890.00	5.20	281.19	13,872.74	43.53	-381.29	383.68	0.34	-0.27	2.33	
13,905.00	5.22	280.30	13,887.68	43.78	-382.63	385.04	0.56	0.13	-5.93	
13,920.00	5.18	280.39	13,902.62	44.02	-383.97	386.39	0.27	-0.27	0.60	
13,935.00	5.12	276.23	13,917.56	44.22	-385.30	387.73	2.52	-0.40	-27.73	
13,950.00	5.61	267.20	13,932.50	44.25	-386.70	389.13	6.50	3.27	-60.20	
13,965.00	5.92	263.56	13,947.42	44.13	-388.20	390.61	3.19	2.07	-24.27	
13,980.00	5.91	264.12	13,962.34	43.97	-389.73	392.13	0.39	-0.07	3.73	
13,995.00	5.95	263.44	13,977.26	43.80	-391.28	393.65	0.54	0.27	-4.53	
14,010.00	6.07	263.52	13,992.18	43.62	-392.84	395.18	0.80	0.80	0.53	
14,025.00	5.85	264.31	14,007.10	43.45	-394.38	396.71	1.57	-1.47	5.27	
14,040.00	5.86	264.26	14,022.02	43.30	-395.91	398.21	0.07	0.07	-0.33	
14,055.00	5.82	265.09	14,036.94	43.16	-397.43	399.71	0.62	-0.27	5.53	
14,070.00	5.70	266.83	14,051.86	43.05	-398.93	401.20	1.41	-0.80	11.60	
14,085.00	5.72	266.33	14,066.79	42.97	-400.42	402.67	0.36	0.13	-3.33	
14,100.00	5.66	267.58	14,081.72	42.89	-401.90	404.14	0.92	-0.40	8.33	
14,115.00	5.60	267.77	14,096.64	42.83	-403.37	405.60	0.42	-0.40	1.27	
14,130.00	5.50	268.19	14,111.57	42.78	-404.82	407.04	0.72	-0.67	2.80	
14,145.00	5.41	270.19	14,126.50	42.76	-406.25	408.46	1.40	-0.60	13.33	
14,160.00	5.39	269.69	14,141.44	42.75	-407.66	409.87	0.34	-0.13	-3.33	
14,175.00	5.46	270.15	14,156.37	42.75	-409.08	411.28	0.55	0.47	3.07	
14,190.00	5.24	271.45	14,171.31	42.77	-410.48	412.67	1.67	-1.47	8.67	
14,205.00	5.19	272.42	14,186.24	42.82	-411.84	414.03	0.68	-0.33	6.47	
14,220.00	5.06	274.36	14,201.18	42.90	-413.18	415.37	1.44	-0.87	12.93	
14,235.00	4.99	276.63	14,216.13	43.02	-414.48	416.69	1.41	-0.47	15.13	
14,250.00	4.98	276.69	14,231.07	43.17	-415.78	417.99	0.08	-0.07	0.40	
14,265.00	4.95	277.17	14,246.01	43.33	-417.07	419.29	0.34	-0.20	3.20	
14,280.00	4.75	280.01	14,260.96	43.52	-418.32	420.55	2.08	-1.33	18.93	
14,295.00	4.79	279.88	14,275.91	43.73	-419.55	421.79	0.28	0.27	-0.87	
14,310.00	4.78	280.54	14,290.86	43.96	-420.78	423.04	0.37	-0.07	4.40	
14,325.00	4.63	283.01	14,305.80	44.21	-421.99	424.26	1.68	-1.00	16.47	
14,340.00	4.29	287.69	14,320.76	44.51	-423.11	425.41	3.32	-2.27	31.20	
14,355.00	4.24	290.03	14,335.72	44.87	-424.17	426.50	1.21	-0.33	15.60	
14,370.00	4.11	291.88	14,350.68	45.26	-425.18	427.55	1.25	-0.87	12.33	

**SDT**  
Survey Report

<b>Company:</b>	Occidental Petroleum_Rockies	<b>Local Co-ordinate Reference:</b>	Well Glade West
<b>Project:</b>	WELD-NAD83-UTMFT13N	<b>TVD Reference:</b>	4900+28 @ 4928.00usft (Precision 580)
<b>Site:</b>	Glade 3N-66W-02 Pad	<b>MD Reference:</b>	4900+28 @ 4928.00usft (Precision 580)
<b>Well:</b>	Glade West	<b>North Reference:</b>	True
<b>Wellbore:</b>	OH	<b>Survey Calculation Method:</b>	Minimum Curvature
<b>Design:</b>	OH	<b>Database:</b>	EDM 5000 Multi User Db

Survey										
Measured Depth (usft)	Inclination (°)	Azimuth (°)	Vertical Depth (usft)	+N/-S (usft)	+E/-W (usft)	Vertical Section (usft)	Dogleg Rate (°/100usft)	Build Rate (°/100usft)	Turn Rate (°/100usft)	
14,385.00	4.19	293.23	14,365.64	45.68	-426.19	428.58	0.84	0.53	9.00	
14,400.00	4.14	293.08	14,380.60	46.11	-427.19	429.62	0.34	-0.33	-1.00	
14,415.00	4.25	295.91	14,395.56	46.56	-428.19	430.66	1.56	0.73	18.87	
14,430.00	4.42	296.85	14,410.52	47.07	-429.20	431.71	1.23	1.13	6.27	
14,445.00	4.56	296.38	14,425.47	47.59	-430.25	432.81	0.97	0.93	-3.13	
14,460.00	4.65	297.03	14,440.42	48.13	-431.33	433.93	0.69	0.60	4.33	
14,475.00	4.64	297.37	14,455.37	48.69	-432.41	435.06	0.20	-0.07	2.27	
14,490.00	4.68	297.95	14,470.32	49.26	-433.49	436.18	0.41	0.27	3.87	
14,505.00	4.73	297.98	14,485.27	49.83	-434.57	437.32	0.33	0.33	0.20	
14,520.00	5.02	298.05	14,500.22	50.43	-435.70	438.49	1.93	1.93	0.47	
14,535.00	5.77	297.42	14,515.15	51.09	-436.95	439.80	5.02	5.00	-4.20	
14,550.00	6.00	297.20	14,530.07	51.79	-438.32	441.22	1.54	1.53	-1.47	
14,565.00	6.02	297.30	14,544.99	52.51	-439.71	442.68	0.15	0.13	0.67	
14,580.00	6.13	296.61	14,559.91	53.23	-441.13	444.16	0.88	0.73	-4.60	
14,595.00	6.13	296.62	14,574.82	53.95	-442.56	445.65	0.01	0.00	0.07	
14,610.00	6.09	297.13	14,589.73	54.67	-443.98	447.13	0.45	-0.27	3.40	
14,625.00	6.07	298.10	14,604.65	55.41	-445.39	448.60	0.70	-0.13	6.47	
14,640.00	6.06	298.64	14,619.57	56.16	-446.78	450.06	0.39	-0.07	3.60	
14,655.00	6.09	298.99	14,634.48	56.92	-448.18	451.52	0.32	0.20	2.33	
14,670.00	6.18	298.39	14,649.40	57.69	-449.58	452.99	0.74	0.60	-4.00	
14,685.00	6.30	297.08	14,664.31	58.45	-451.03	454.49	1.24	0.80	-8.73	
14,700.00	6.66	294.99	14,679.21	59.20	-452.55	456.08	2.87	2.40	-13.93	
14,715.00	7.09	293.70	14,694.10	59.93	-454.18	457.77	3.05	2.87	-8.60	
14,730.00	7.21	293.81	14,708.99	60.69	-455.89	459.54	0.81	0.80	0.73	
14,745.00	7.43	293.16	14,723.86	61.45	-457.64	461.36	1.57	1.47	-4.33	
14,760.00	7.51	293.04	14,738.74	62.21	-459.44	463.22	0.54	0.53	-0.80	
14,775.00	7.54	293.58	14,753.61	62.99	-461.24	465.08	0.51	0.20	3.60	
14,790.00	7.72	292.62	14,768.48	63.77	-463.07	466.98	1.47	1.20	-6.40	
14,805.00	8.22	290.58	14,783.33	64.54	-465.01	468.98	3.83	3.33	-13.60	
14,820.00	8.60	288.57	14,798.17	65.27	-467.07	471.10	3.20	2.53	-13.40	
14,835.00	8.78	288.01	14,813.00	65.98	-469.23	473.31	1.33	1.20	-3.73	
14,850.00	8.88	287.46	14,827.82	66.68	-471.42	475.56	0.87	0.67	-3.67	
14,865.00	8.91	287.11	14,842.64	67.37	-473.63	477.83	0.41	0.20	-2.33	
14,880.00	8.88	286.83	14,857.46	68.05	-475.85	480.10	0.35	-0.20	-1.87	
14,895.00	8.78	285.32	14,872.28	68.69	-478.06	482.36	1.68	-0.67	-10.07	
14,910.00	8.78	284.74	14,887.10	69.28	-480.28	484.62	0.59	0.00	-3.87	
14,925.00	8.74	285.62	14,901.93	69.88	-482.48	486.87	0.93	-0.27	5.87	
14,940.00	8.77	285.39	14,916.75	70.49	-484.68	489.12	0.31	0.20	-1.53	
14,955.00	8.84	285.02	14,931.58	71.09	-486.90	491.38	0.60	0.47	-2.47	
14,970.00	8.74	286.10	14,946.40	71.71	-489.10	493.63	1.29	-0.67	7.20	
14,985.00	8.51	287.43	14,961.23	72.35	-491.26	495.84	2.03	-1.53	8.87	
15,000.00	8.27	288.37	14,976.07	73.03	-493.34	497.97	1.84	-1.60	6.27	
15,015.00	8.23	289.02	14,990.92	73.72	-495.38	500.07	0.68	-0.27	4.33	
15,030.00	8.15	288.65	15,005.76	74.41	-497.40	502.14	0.64	-0.53	-2.47	

# SDT Survey Report

<b>Company:</b>	Occidental Petroleum_Rockies	<b>Local Co-ordinate Reference:</b>	Well Glade West
<b>Project:</b>	WELD-NAD83-UTMFT13N	<b>TVD Reference:</b>	4900+28 @ 4928.00usft (Precision 580)
<b>Site:</b>	Glade 3N-66W-02 Pad	<b>MD Reference:</b>	4900+28 @ 4928.00usft (Precision 580)
<b>Well:</b>	Glade West	<b>North Reference:</b>	True
<b>Wellbore:</b>	OH	<b>Survey Calculation Method:</b>	Minimum Curvature
<b>Design:</b>	OH	<b>Database:</b>	EDM 5000 Multi User Db

Survey										
Measured Depth (usft)	Inclination (°)	Azimuth (°)	Vertical Depth (usft)	+N/-S (usft)	+E/-W (usft)	Vertical Section (usft)	Dogleg Rate (°/100usft)	Build Rate (°/100usft)	Turn Rate (°/100usft)	
15,045.00	8.09	289.52	15,020.61	75.10	-499.40	504.20	0.91	-0.40	5.80	
15,060.00	8.03	289.58	15,035.47	75.80	-501.39	506.24	0.40	-0.40	0.40	
15,075.00	7.89	289.60	15,050.32	76.50	-503.34	508.25	0.93	-0.93	0.13	
15,090.00	7.72	288.97	15,065.18	77.17	-505.27	510.23	1.27	-1.13	-4.20	
15,105.00	7.55	288.64	15,080.05	77.81	-507.15	512.17	1.17	-1.13	-2.20	
15,120.00	7.56	288.51	15,094.92	78.44	-509.02	514.09	0.13	0.07	-0.87	
15,135.00	7.56	288.33	15,109.79	79.07	-510.89	516.01	0.16	0.00	-1.20	
15,150.00	7.56	288.58	15,124.66	79.69	-512.77	517.93	0.22	0.00	1.67	
15,165.00	7.62	289.06	15,139.53	80.33	-514.64	519.86	0.58	0.40	3.20	
15,180.00	7.69	288.12	15,154.39	80.97	-516.54	521.80	0.96	0.47	-6.27	
15,195.00	7.67	288.68	15,169.26	81.60	-518.44	523.75	0.52	-0.13	3.73	
15,210.00	7.66	288.81	15,184.12	82.24	-520.33	525.70	0.13	-0.07	0.87	
15,225.00	7.74	288.37	15,198.99	82.88	-522.24	527.65	0.66	0.53	-2.93	
15,240.00	7.73	288.66	15,213.85	83.52	-524.15	529.62	0.27	-0.07	1.93	
15,255.00	7.78	288.85	15,228.72	84.18	-526.07	531.59	0.37	0.33	1.27	
15,270.00	7.82	288.91	15,243.58	84.83	-527.99	533.57	0.27	0.27	0.40	
15,285.00	7.87	289.02	15,258.44	85.50	-529.93	535.56	0.35	0.33	0.73	
15,300.00	7.93	288.21	15,273.29	86.16	-531.88	537.56	0.84	0.40	-5.40	
15,315.00	7.92	288.43	15,288.15	86.81	-533.85	539.58	0.21	-0.07	1.47	
15,330.00	7.92	287.90	15,303.01	87.45	-535.81	541.59	0.49	0.00	-3.53	
15,345.00	7.93	287.51	15,317.86	88.08	-537.78	543.61	0.36	0.07	-2.60	
15,360.00	7.91	285.42	15,332.72	88.67	-539.76	545.64	1.92	-0.13	-13.93	
15,375.00	7.89	282.64	15,347.58	89.17	-541.76	547.68	2.55	-0.13	-18.53	
15,390.00	7.89	280.74	15,362.44	89.58	-543.78	549.72	1.74	0.00	-12.67	
15,405.00	7.94	280.63	15,377.29	89.97	-545.81	551.78	0.35	0.33	-0.73	
15,420.00	7.92	280.99	15,392.15	90.35	-547.84	553.84	0.36	-0.13	2.40	
15,435.00	8.05	280.06	15,407.00	90.74	-549.89	555.91	1.22	0.87	-6.20	
15,450.00	7.96	280.01	15,421.86	91.10	-551.95	558.00	0.60	-0.60	-0.33	
15,465.00	7.79	277.99	15,436.72	91.42	-553.98	560.05	2.17	-1.13	-13.47	
15,480.00	7.55	275.25	15,451.58	91.65	-555.96	562.05	2.92	-1.60	-18.27	
15,495.00	7.47	274.49	15,466.45	91.82	-557.92	564.01	0.85	-0.53	-5.07	
15,510.00	7.45	273.81	15,481.33	91.96	-559.86	565.95	0.60	-0.13	-4.53	
15,525.00	7.47	273.49	15,496.20	92.08	-561.80	567.90	0.31	0.13	-2.13	
15,540.00	7.34	273.06	15,511.08	92.19	-563.73	569.83	0.94	-0.87	-2.87	
15,555.00	6.97	271.49	15,525.96	92.27	-565.60	571.70	2.79	-2.47	-10.47	
15,570.00	6.53	269.06	15,540.85	92.28	-567.36	573.45	3.50	-2.93	-16.20	
15,585.00	6.32	267.88	15,555.76	92.23	-569.04	575.12	1.65	-1.40	-7.87	
15,600.00	6.25	267.07	15,570.67	92.16	-570.68	576.75	0.75	-0.47	-5.40	
15,615.00	6.16	267.34	15,585.58	92.08	-572.30	578.35	0.63	-0.60	1.80	
15,630.00	6.15	266.98	15,600.50	92.00	-573.91	579.95	0.27	-0.07	-2.40	
15,645.00	6.14	266.69	15,615.41	91.91	-575.51	581.53	0.22	-0.07	-1.93	
15,660.00	5.99	267.59	15,630.33	91.84	-577.09	583.10	1.18	-1.00	6.00	
15,675.00	6.04	267.09	15,645.24	91.76	-578.66	584.66	0.48	0.33	-3.33	

**SDT**  
Survey Report

<b>Company:</b>	Occidental Petroleum_Rockies	<b>Local Co-ordinate Reference:</b>	Well Glade West
<b>Project:</b>	WELD-NAD83-UTMFT13N	<b>TVD Reference:</b>	4900+28 @ 4928.00usft (Precision 580)
<b>Site:</b>	Glade 3N-66W-02 Pad	<b>MD Reference:</b>	4900+28 @ 4928.00usft (Precision 580)
<b>Well:</b>	Glade West	<b>North Reference:</b>	True
<b>Wellbore:</b>	OH	<b>Survey Calculation Method:</b>	Minimum Curvature
<b>Design:</b>	OH	<b>Database:</b>	EDM 5000 Multi User Db

Survey										
Measured Depth (usft)	Inclination (°)	Azimuth (°)	Vertical Depth (usft)	+N/-S (usft)	+E/-W (usft)	Vertical Section (usft)	Dogleg Rate (°/100usft)	Build Rate (°/100usft)	Turn Rate (°/100usft)	
15,690.00	6.08	266.47	15,660.16	91.67	-580.24	586.23	0.51	0.27	-4.13	
15,705.00	5.98	266.95	15,675.08	91.58	-581.82	587.78	0.75	-0.67	3.20	
15,720.00	6.03	266.35	15,689.99	91.49	-583.38	589.33	0.53	0.33	-4.00	
15,735.00	6.03	266.73	15,704.91	91.40	-584.96	590.89	0.27	0.00	2.53	
15,750.00	5.83	268.15	15,719.83	91.33	-586.51	592.43	1.65	-1.33	9.47	
15,765.00	5.85	268.29	15,734.75	91.28	-588.03	593.94	0.16	0.13	0.93	
15,780.00	5.89	267.72	15,749.67	91.23	-589.56	595.46	0.47	0.27	-3.80	
15,795.00	5.85	268.28	15,764.60	91.17	-591.10	596.98	0.47	-0.27	3.73	
15,810.00	5.82	268.79	15,779.52	91.13	-592.62	598.50	0.40	-0.20	3.40	
15,825.00	5.77	269.47	15,794.44	91.11	-594.14	600.01	0.57	-0.33	4.53	
15,840.00	5.76	269.63	15,809.37	91.10	-595.64	601.50	0.13	-0.07	1.07	
15,855.00	5.64	270.60	15,824.29	91.10	-597.13	602.99	1.03	-0.80	6.47	
15,870.00	5.67	269.19	15,839.22	91.10	-598.61	604.46	0.95	0.20	-9.40	
15,885.00	5.61	269.57	15,854.15	91.08	-600.08	605.93	0.47	-0.40	2.53	
15,900.00	5.40	269.83	15,869.08	91.07	-601.52	607.36	1.41	-1.40	1.73	
15,915.00	5.26	269.01	15,884.01	91.06	-602.92	608.74	1.06	-0.93	-5.47	
15,930.00	5.18	267.88	15,898.95	91.02	-604.28	610.10	0.87	-0.53	-7.53	
15,945.00	5.11	267.83	15,913.89	90.97	-605.62	611.43	0.47	-0.47	-0.33	
15,960.00	5.13	267.68	15,928.83	90.92	-606.96	612.76	0.16	0.13	-1.00	
15,975.00	5.12	267.90	15,943.77	90.87	-608.30	614.09	0.15	-0.07	1.47	
15,990.00	5.24	267.57	15,958.71	90.82	-609.65	615.43	0.82	0.80	-2.20	
16,005.00	5.30	266.64	15,973.64	90.75	-611.03	616.79	0.70	0.40	-6.20	
16,020.00	5.36	266.90	15,988.58	90.67	-612.42	618.17	0.43	0.40	1.73	
16,035.00	5.47	266.16	16,003.51	90.58	-613.83	619.57	0.87	0.73	-4.93	
16,050.00	5.61	265.76	16,018.44	90.48	-615.28	621.00	0.97	0.93	-2.67	
16,065.00	5.69	265.84	16,033.37	90.37	-616.75	622.46	0.54	0.53	0.53	
16,080.00	5.72	266.33	16,048.30	90.27	-618.24	623.93	0.38	0.20	3.27	
16,095.00	5.90	265.94	16,063.22	90.17	-619.75	625.43	1.23	1.20	-2.60	
16,110.00	6.04	265.30	16,078.14	90.05	-621.31	626.97	1.03	0.93	-4.27	
16,125.00	6.13	265.25	16,093.05	89.92	-622.89	628.53	0.60	0.60	-0.33	
16,140.00	6.22	265.58	16,107.97	89.79	-624.50	630.12	0.64	0.60	2.20	
16,155.00	6.18	266.07	16,122.88	89.67	-626.12	631.72	0.44	-0.27	3.27	
16,170.00	6.27	265.52	16,137.79	89.55	-627.74	633.32	0.72	0.60	-3.67	
16,185.00	6.32	265.10	16,152.70	89.42	-629.38	634.94	0.45	0.33	-2.80	
16,200.00	6.26	266.08	16,167.61	89.29	-631.02	636.56	0.82	-0.40	6.53	
16,215.00	6.26	265.45	16,182.52	89.17	-632.65	638.18	0.46	0.00	-4.20	
16,230.00	6.39	264.98	16,197.43	89.03	-634.30	639.80	0.93	0.87	-3.13	
16,245.00	6.34	265.71	16,212.34	88.90	-635.95	641.44	0.63	-0.33	4.87	
16,260.00	6.35	265.68	16,227.24	88.77	-637.61	643.08	0.07	0.07	-0.20	
16,275.00	6.39	265.82	16,242.15	88.65	-639.27	644.72	0.29	0.27	0.93	
16,290.00	6.58	264.40	16,257.05	88.50	-640.95	646.38	1.66	1.27	-9.47	
16,305.00	6.64	264.13	16,271.96	88.33	-642.67	648.08	0.45	0.40	-1.80	
16,320.00	6.61	263.94	16,286.85	88.15	-644.39	649.78	0.25	-0.20	-1.27	

# SDT Survey Report

<b>Company:</b>	Occidental Petroleum_Rockies	<b>Local Co-ordinate Reference:</b>	Well Glade West
<b>Project:</b>	WELD-NAD83-UTMFT13N	<b>TVD Reference:</b>	4900+28 @ 4928.00usft (Precision 580)
<b>Site:</b>	Glade 3N-66W-02 Pad	<b>MD Reference:</b>	4900+28 @ 4928.00usft (Precision 580)
<b>Well:</b>	Glade West	<b>North Reference:</b>	True
<b>Wellbore:</b>	OH	<b>Survey Calculation Method:</b>	Minimum Curvature
<b>Design:</b>	OH	<b>Database:</b>	EDM 5000 Multi User Db

Survey										
Measured Depth (usft)	Inclination (°)	Azimuth (°)	Vertical Depth (usft)	+N/-S (usft)	+E/-W (usft)	Vertical Section (usft)	Dogleg Rate (°/100usft)	Build Rate (°/100usft)	Turn Rate (°/100usft)	
16,335.00	6.59	263.77	16,301.76	87.97	-646.11	651.47	0.19	-0.13	-1.13	
16,350.00	6.68	263.75	16,316.66	87.78	-647.83	653.16	0.60	0.60	-0.13	
16,365.00	6.71	263.26	16,331.55	87.58	-649.57	654.88	0.43	0.20	-3.27	
16,380.00	6.73	263.03	16,346.45	87.37	-651.31	656.59	0.22	0.13	-1.53	
16,395.00	6.54	262.02	16,361.35	87.15	-653.03	658.28	1.49	-1.27	-6.73	
16,410.00	6.58	259.65	16,376.25	86.87	-654.72	659.94	1.82	0.27	-15.80	
16,425.00	6.63	254.89	16,391.15	86.49	-656.40	661.58	3.66	0.33	-31.73	
16,440.00	6.44	251.39	16,406.05	86.00	-658.03	663.16	2.94	-1.27	-23.33	
16,455.00	6.51	249.53	16,420.96	85.43	-659.63	664.70	1.47	0.47	-12.40	
16,470.00	6.62	247.67	16,435.86	84.81	-661.23	666.23	1.60	0.73	-12.40	
16,485.00	6.69	245.61	16,450.76	84.12	-662.82	667.75	1.66	0.47	-13.73	
16,500.00	6.70	245.30	16,465.66	83.39	-664.41	669.27	0.25	0.07	-2.07	
16,515.00	6.77	244.52	16,480.55	82.65	-666.00	670.79	0.77	0.47	-5.20	
16,530.00	6.63	244.04	16,495.45	81.89	-667.58	672.29	1.01	-0.93	-3.20	
16,545.00	6.48	243.88	16,510.35	81.13	-669.12	673.75	1.01	-1.00	-1.07	
16,560.00	6.44	243.41	16,525.26	80.38	-670.63	675.19	0.44	-0.27	-3.13	
16,575.00	6.25	243.34	16,540.17	79.64	-672.11	676.59	1.27	-1.27	-0.47	
16,590.00	6.14	243.49	16,555.08	78.92	-673.56	677.97	0.74	-0.73	1.00	
16,605.00	6.03	243.57	16,569.99	78.21	-674.98	679.32	0.74	-0.73	0.53	
16,620.00	5.96	243.31	16,584.91	77.51	-676.39	680.65	0.50	-0.47	-1.73	
16,635.00	6.01	243.57	16,599.83	76.81	-677.79	681.98	0.38	0.33	1.73	
16,650.00	5.74	243.89	16,614.75	76.13	-679.16	683.29	1.81	-1.80	2.13	
16,665.00	5.61	243.98	16,629.68	75.48	-680.49	684.55	0.87	-0.87	0.60	
16,680.00	5.53	244.21	16,644.61	74.84	-681.80	685.80	0.55	-0.53	1.53	
16,695.00	5.35	244.04	16,659.54	74.22	-683.08	687.02	1.20	-1.20	-1.13	
16,710.00	5.27	244.43	16,674.47	73.62	-684.33	688.21	0.59	-0.53	2.60	
16,725.00	5.13	244.95	16,689.41	73.04	-685.56	689.38	0.98	-0.93	3.47	
16,740.00	4.93	245.31	16,704.36	72.48	-686.76	690.51	1.35	-1.33	2.40	
16,755.00	5.02	244.87	16,719.30	71.94	-687.94	691.64	0.65	0.60	-2.93	
16,770.00	4.99	245.45	16,734.24	71.39	-689.12	692.77	0.39	-0.20	3.87	
16,785.00	4.72	246.44	16,749.19	70.87	-690.28	693.88	1.88	-1.80	6.60	
16,800.00	4.82	245.42	16,764.14	70.36	-691.42	694.96	0.87	0.67	-6.80	
16,815.00	4.56	245.52	16,779.09	69.85	-692.54	696.03	1.73	-1.73	0.67	
16,830.00	4.47	244.30	16,794.04	69.35	-693.61	697.05	0.88	-0.60	-8.13	
16,845.00	3.74	248.14	16,809.00	68.91	-694.59	697.98	5.20	-4.87	25.60	
16,860.00	3.73	248.22	16,823.97	68.55	-695.49	698.85	0.08	-0.07	0.53	
16,875.00	3.45	250.95	16,838.94	68.22	-696.37	699.70	2.19	-1.87	18.20	
16,890.00	3.29	253.23	16,853.91	67.95	-697.21	700.51	1.39	-1.07	15.20	
16,905.00	2.75	258.69	16,868.89	67.76	-697.98	701.25	4.07	-3.60	36.40	
16,920.00	1.80	270.94	16,883.88	67.69	-698.57	701.83	7.08	-6.33	81.67	
16,935.00	2.39	269.94	16,898.87	67.69	-699.11	702.38	3.94	3.93	-6.67	
16,950.00	1.84	287.50	16,913.86	67.76	-699.66	702.92	5.63	-3.67	117.07	
16,965.00	1.55	304.11	16,928.85	67.95	-700.05	703.34	3.78	-1.93	110.73	
16,980.00	1.55	307.20	16,943.85	68.19	-700.38	703.69	0.56	0.00	20.60	

**SDT**  
Survey Report

<b>Company:</b>	Occidental Petroleum_Rockies	<b>Local Co-ordinate Reference:</b>	Well Glade West
<b>Project:</b>	WELD-NAD83-UTMFT13N	<b>TVD Reference:</b>	4900+28 @ 4928.00usft (Precision 580)
<b>Site:</b>	Glade 3N-66W-02 Pad	<b>MD Reference:</b>	4900+28 @ 4928.00usft (Precision 580)
<b>Well:</b>	Glade West	<b>North Reference:</b>	True
<b>Wellbore:</b>	OH	<b>Survey Calculation Method:</b>	Minimum Curvature
<b>Design:</b>	OH	<b>Database:</b>	EDM 5000 Multi User Db

Survey										
Measured Depth (usft)	Inclination (°)	Azimuth (°)	Vertical Depth (usft)	+N/-S (usft)	+E/-W (usft)	Vertical Section (usft)	Dogleg Rate (°/100usft)	Build Rate (°/100usft)	Turn Rate (°/100usft)	
16,995.00	1.50	307.50	16,958.84	68.43	-700.70	704.03	0.34	-0.33	2.00	
17,010.00	1.39	311.21	16,973.84	68.67	-700.99	704.34	0.96	-0.73	24.73	
17,025.00	1.02	319.84	16,988.83	68.89	-701.22	704.58	2.74	-2.47	57.53	
17,040.00	0.77	315.83	17,003.83	69.07	-701.37	704.75	1.72	-1.67	-26.73	
17,055.00	0.56	326.55	17,018.83	69.20	-701.48	704.88	1.62	-1.40	71.47	
17,070.00	0.47	337.30	17,033.83	69.32	-701.55	704.95	0.88	-0.60	71.67	
17,085.00	0.36	342.85	17,048.83	69.42	-701.59	705.00	0.78	-0.73	37.00	
17,100.00	0.72	50.69	17,063.83	69.52	-701.53	704.95	4.48	2.40	452.27	
17,115.00	0.91	61.56	17,078.83	69.64	-701.35	704.78	1.63	1.27	72.47	
17,130.00	1.33	64.81	17,093.83	69.77	-701.09	704.53	2.83	2.80	21.67	
17,145.00	1.33	66.24	17,108.82	69.91	-700.77	704.23	0.22	0.00	9.53	
17,160.00	1.34	65.12	17,123.82	70.06	-700.45	703.93	0.19	0.07	-7.47	
17,175.00	1.39	65.21	17,138.81	70.21	-700.13	703.62	0.33	0.33	0.60	
17,190.00	1.27	69.22	17,153.81	70.34	-699.81	703.31	1.01	-0.80	26.73	
17,205.00	1.17	74.01	17,168.81	70.44	-699.50	703.02	0.95	-0.67	31.93	
17,220.00	1.39	77.69	17,183.80	70.53	-699.18	702.70	1.56	1.47	24.53	
17,235.00	1.62	89.82	17,198.80	70.57	-698.79	702.32	2.61	1.53	80.87	
17,250.00	1.42	101.51	17,213.79	70.53	-698.39	701.92	2.45	-1.33	77.93	
17,265.00	1.00	126.91	17,228.79	70.41	-698.11	701.63	4.48	-2.80	169.33	
17,280.00	0.80	160.27	17,243.79	70.24	-697.97	701.47	3.67	-1.33	222.40	
17,295.00	0.94	194.07	17,258.79	70.02	-697.96	701.45	3.49	0.93	225.33	
17,310.00	0.94	200.66	17,273.78	69.78	-698.04	701.50	0.72	0.00	43.93	
17,325.00	0.98	204.28	17,288.78	69.55	-698.13	701.57	0.48	0.27	24.13	
17,340.00	1.27	216.53	17,303.78	69.30	-698.28	701.70	2.50	1.93	81.67	
17,355.00	1.88	233.37	17,318.77	69.02	-698.58	701.97	5.06	4.07	112.27	
17,370.00	2.22	240.64	17,333.76	68.73	-699.03	702.39	2.85	2.27	48.47	
17,385.00	2.38	241.10	17,348.75	68.44	-699.56	702.89	1.07	1.07	3.07	
17,400.00	2.32	241.48	17,363.74	68.14	-700.10	703.40	0.41	-0.40	2.53	
17,415.00	2.50	239.99	17,378.73	67.83	-700.65	703.92	1.27	1.20	-9.93	
17,430.00	2.45	240.59	17,393.71	67.51	-701.21	704.45	0.38	-0.33	4.00	
17,445.00	2.38	239.81	17,408.70	67.20	-701.76	704.96	0.52	-0.47	-5.20	
17,460.00	3.19	241.14	17,423.68	66.84	-702.39	705.56	5.42	5.40	8.87	
17,475.00	3.38	240.56	17,438.66	66.42	-703.14	706.27	1.29	1.27	-3.87	
17,490.00	3.38	240.14	17,453.63	65.98	-703.91	707.00	0.17	0.00	-2.80	
17,505.00	3.86	241.10	17,468.60	65.52	-704.74	707.78	3.23	3.20	6.40	
17,520.00	3.71	239.85	17,483.57	65.03	-705.60	708.59	1.14	-1.00	-8.33	
17,535.00	4.37	239.69	17,498.53	64.50	-706.51	709.45	4.40	4.40	-1.07	
17,550.00	5.72	238.85	17,513.47	63.83	-707.64	710.51	9.01	9.00	-5.60	
17,565.00	6.30	238.45	17,528.39	63.01	-708.99	711.77	3.88	3.87	-2.67	
17,580.00	6.65	238.14	17,543.29	62.12	-710.42	713.13	2.34	2.33	-2.07	
17,595.00	6.64	238.56	17,558.19	61.21	-711.90	714.51	0.33	-0.07	2.80	
17,610.00	6.61	238.28	17,573.09	60.30	-713.38	715.90	0.29	-0.20	-1.87	
17,625.00	6.96	238.16	17,587.99	59.37	-714.88	717.31	2.34	2.33	-0.80	

**SDT**  
Survey Report

<b>Company:</b>	Occidental Petroleum_Rockies	<b>Local Co-ordinate Reference:</b>	Well Glade West
<b>Project:</b>	WELD-NAD83-UTMFT13N	<b>TVD Reference:</b>	4900+28 @ 4928.00usft (Precision 580)
<b>Site:</b>	Glade 3N-66W-02 Pad	<b>MD Reference:</b>	4900+28 @ 4928.00usft (Precision 580)
<b>Well:</b>	Glade West	<b>North Reference:</b>	True
<b>Wellbore:</b>	OH	<b>Survey Calculation Method:</b>	Minimum Curvature
<b>Design:</b>	OH	<b>Database:</b>	EDM 5000 Multi User Db

Survey										
Measured Depth (usft)	Inclination (°)	Azimuth (°)	Vertical Depth (usft)	+N/-S (usft)	+E/-W (usft)	Vertical Section (usft)	Dogleg Rate (°/100usft)	Build Rate (°/100usft)	Turn Rate (°/100usft)	
17,640.00	6.77	237.25	17,602.88	58.41	-716.40	718.73	1.46	-1.27	-6.07	
17,655.00	6.63	236.56	17,617.78	57.46	-717.86	720.10	1.08	-0.93	-4.60	
17,670.00	6.47	236.10	17,632.68	56.51	-719.29	721.43	1.12	-1.07	-3.07	
17,685.00	6.18	234.38	17,647.59	55.57	-720.65	722.70	2.31	-1.93	-11.47	
17,700.00	5.94	234.49	17,662.50	54.64	-721.93	723.90	1.60	-1.60	0.73	
17,715.00	5.85	234.73	17,677.42	53.75	-723.19	725.07	0.62	-0.60	1.60	
17,730.00	5.53	233.49	17,692.35	52.88	-724.40	726.19	2.29	-2.13	-8.27	
17,745.00	5.45	232.67	17,707.28	52.02	-725.54	727.25	0.75	-0.53	-5.47	
17,760.00	5.44	232.17	17,722.21	51.15	-726.67	728.29	0.32	-0.07	-3.33	
17,775.00	5.33	231.27	17,737.15	50.28	-727.78	729.31	0.92	-0.73	-6.00	
17,790.00	5.27	230.79	17,752.08	49.41	-728.85	730.30	0.50	-0.40	-3.20	
17,805.00	5.29	230.14	17,767.02	48.53	-729.92	731.28	0.42	0.13	-4.33	
17,820.00	5.10	229.15	17,781.96	47.65	-730.95	732.23	1.40	-1.27	-6.60	
17,835.00	5.10	228.10	17,796.90	46.77	-731.95	733.15	0.62	0.00	-7.00	
17,850.00	4.97	228.46	17,811.84	45.89	-732.94	734.05	0.89	-0.87	2.40	
17,865.00	4.78	227.41	17,826.79	45.04	-733.88	734.91	1.40	-1.27	-7.00	
17,880.00	4.77	226.98	17,841.73	44.19	-734.80	735.74	0.25	-0.07	-2.87	
17,895.00	4.68	225.65	17,856.68	43.34	-735.69	736.55	0.95	-0.60	-8.87	
17,910.00	4.70	225.95	17,871.63	42.48	-736.57	737.35	0.21	0.13	2.00	
17,925.00	4.88	226.15	17,886.58	41.61	-737.47	738.17	1.21	1.20	1.33	
17,940.00	4.84	223.00	17,901.53	40.71	-738.36	738.97	1.80	-0.27	-21.00	
17,955.00	5.00	222.76	17,916.47	39.76	-739.24	739.76	1.08	1.07	-1.60	
17,970.00	5.19	223.15	17,931.41	38.79	-740.15	740.57	1.29	1.27	2.60	
17,985.00	5.22	223.05	17,946.35	37.80	-741.08	741.41	0.21	0.20	-0.67	
18,000.00	5.16	222.60	17,961.29	36.80	-742.00	742.23	0.48	-0.40	-3.00	
18,015.00	5.28	222.45	17,976.23	35.80	-742.92	743.06	0.81	0.80	-1.00	
18,030.00	5.13	221.74	17,991.17	34.79	-743.83	743.87	1.09	-1.00	-4.73	
18,045.00	5.28	222.52	18,006.10	33.78	-744.75	744.69	1.11	1.00	5.20	
18,060.00	5.28	222.52	18,021.04	32.76	-745.68	745.53	0.00	0.00	0.00	
18,075.00	5.18	221.77	18,035.98	31.75	-746.60	746.35	0.81	-0.67	-5.00	
18,090.00	5.17	221.72	18,050.92	30.74	-747.50	747.15	0.07	-0.07	-0.33	
18,105.00	5.03	221.43	18,065.86	29.74	-748.38	747.94	0.95	-0.93	-1.93	
18,120.00	4.96	221.73	18,080.80	28.76	-749.25	748.71	0.50	-0.47	2.00	
18,135.00	5.00	222.32	18,095.74	27.79	-750.12	749.49	0.43	0.27	3.93	
18,150.00	4.94	222.79	18,110.69	26.84	-751.00	750.28	0.48	-0.40	3.13	
18,165.00	4.89	222.89	18,125.63	25.89	-751.88	751.06	0.34	-0.33	0.67	
18,180.00	4.97	224.93	18,140.58	24.97	-752.77	751.86	1.28	0.53	13.60	
18,195.00	4.95	227.84	18,155.52	24.07	-753.71	752.72	1.68	-0.13	19.40	
18,210.00	5.07	235.68	18,170.46	23.26	-754.73	753.67	4.63	0.80	52.27	
18,225.00	5.45	241.16	18,185.40	22.55	-755.91	754.77	4.20	2.53	36.53	
18,240.00	5.32	243.40	18,200.33	21.89	-757.15	755.95	1.65	-0.87	14.93	
18,255.00	5.32	243.24	18,215.27	21.27	-758.39	757.13	0.10	0.00	-1.07	
18,270.00	5.49	243.84	18,230.20	20.64	-759.66	758.33	1.19	1.13	4.00	

**SDT**  
Survey Report

<b>Company:</b>	Occidental Petroleum_Rockies	<b>Local Co-ordinate Reference:</b>	Well Glade West
<b>Project:</b>	WELD-NAD83-UTMFT13N	<b>TVD Reference:</b>	4900+28 @ 4928.00usft (Precision 580)
<b>Site:</b>	Glade 3N-66W-02 Pad	<b>MD Reference:</b>	4900+28 @ 4928.00usft (Precision 580)
<b>Well:</b>	Glade West	<b>North Reference:</b>	True
<b>Wellbore:</b>	OH	<b>Survey Calculation Method:</b>	Minimum Curvature
<b>Design:</b>	OH	<b>Database:</b>	EDM 5000 Multi User Db

Survey										
Measured Depth (usft)	Inclination (°)	Azimuth (°)	Vertical Depth (usft)	+N/-S (usft)	+E/-W (usft)	Vertical Section (usft)	Dogleg Rate (°/100usft)	Build Rate (°/100usft)	Turn Rate (°/100usft)	
18,285.00	5.27	243.98	18,245.14	20.02	-760.92	759.53	1.47	-1.47	0.93	
18,300.00	5.27	244.42	18,260.07	19.42	-762.16	760.71	0.27	0.00	2.93	
18,315.00	5.15	243.75	18,275.01	18.82	-763.39	761.87	0.90	-0.80	-4.47	
18,330.00	4.93	243.68	18,289.95	18.24	-764.57	763.00	1.47	-1.47	-0.47	
18,345.00	5.14	244.05	18,304.89	17.66	-765.75	764.12	1.42	1.40	2.47	
18,360.00	5.00	242.95	18,319.84	17.07	-766.94	765.25	1.14	-0.93	-7.33	
18,375.00	4.86	242.83	18,334.78	16.48	-768.09	766.33	0.94	-0.93	-0.80	
18,390.00	4.98	243.78	18,349.73	15.90	-769.23	767.42	0.97	0.80	6.33	
18,405.00	4.82	244.03	18,364.67	15.34	-770.39	768.52	1.08	-1.07	1.67	
18,420.00	4.93	243.70	18,379.62	14.78	-771.53	769.61	0.76	0.73	-2.20	
18,435.00	5.09	244.44	18,394.56	14.21	-772.71	770.73	1.15	1.07	4.93	
18,450.00	4.81	243.43	18,409.50	13.64	-773.87	771.83	1.95	-1.87	-6.73	
18,465.00	4.78	243.58	18,424.45	13.08	-774.99	772.90	0.22	-0.20	1.00	
18,480.00	4.72	243.83	18,439.40	12.53	-776.11	773.96	0.42	-0.40	1.67	
18,495.00	4.72	241.53	18,454.35	11.96	-777.20	775.00	1.26	0.00	-15.33	
18,510.00	4.86	238.12	18,469.30	11.33	-778.28	776.01	2.11	0.93	-22.73	
18,525.00	5.01	236.49	18,484.24	10.64	-779.37	777.03	1.37	1.00	-10.87	
18,540.00	5.06	234.96	18,499.18	9.89	-780.46	778.05	0.96	0.33	-10.20	
18,555.00	5.10	234.47	18,514.12	9.13	-781.54	779.06	0.39	0.27	-3.27	
18,570.00	5.07	234.62	18,529.06	8.36	-782.63	780.06	0.22	-0.20	1.00	
18,585.00	5.07	233.62	18,544.01	7.58	-783.70	781.06	0.59	0.00	-6.67	
18,600.00	5.51	229.97	18,558.94	6.72	-784.78	782.06	3.69	2.93	-24.33	
18,615.00	5.70	228.75	18,573.87	5.77	-785.90	783.08	1.50	1.27	-8.13	
18,630.00	5.88	227.30	18,588.79	4.76	-787.02	784.11	1.55	1.20	-9.67	
18,645.00	5.92	226.94	18,603.71	3.71	-788.15	785.14	0.36	0.27	-2.40	
18,660.00	5.82	227.27	18,618.64	2.66	-789.27	786.16	0.70	-0.67	2.20	
18,675.00	5.90	226.73	18,633.56	1.62	-790.39	787.18	0.65	0.53	-3.60	
18,690.00	5.97	225.59	18,648.48	0.54	-791.51	788.19	0.91	0.47	-7.60	
18,705.00	6.00	226.31	18,663.39	-0.54	-792.64	789.21	0.54	0.20	4.80	
18,720.00	5.92	225.77	18,678.31	-1.63	-793.76	790.23	0.65	-0.53	-3.60	
18,735.00	5.99	226.37	18,693.23	-2.70	-794.88	791.24	0.62	0.47	4.00	
18,750.00	5.91	226.06	18,708.15	-3.78	-796.00	792.26	0.57	-0.53	-2.07	
18,765.00	6.08	225.52	18,723.07	-4.87	-797.12	793.28	1.19	1.13	-3.60	
18,780.00	6.12	224.65	18,737.99	-6.00	-798.25	794.30	0.67	0.27	-5.80	
18,795.00	6.13	225.04	18,752.90	-7.13	-799.38	795.32	0.29	0.07	2.60	
18,810.00	6.16	224.91	18,767.81	-8.27	-800.52	796.34	0.22	0.20	-0.87	
18,825.00	6.15	225.05	18,782.73	-9.41	-801.65	797.37	0.12	-0.07	0.93	
18,840.00	5.90	223.88	18,797.64	-10.53	-802.76	798.37	1.86	-1.67	-7.80	
18,855.00	5.94	223.15	18,812.56	-11.65	-803.82	799.32	0.57	0.27	-4.87	
18,870.00	5.90	223.15	18,827.48	-12.78	-804.88	800.27	0.27	-0.27	0.00	
18,885.00	5.76	222.38	18,842.41	-13.90	-805.91	801.20	1.07	-0.93	-5.13	
18,900.00	5.83	221.95	18,857.33	-15.02	-806.93	802.11	0.55	0.47	-2.87	
18,915.00	5.72	222.28	18,872.25	-16.14	-807.94	803.01	0.77	-0.73	2.20	
18,930.00	5.63	220.34	18,887.18	-17.26	-808.92	803.89	1.41	-0.60	-12.93	

# SDT Survey Report

<b>Company:</b>	Occidental Petroleum_Rockies	<b>Local Co-ordinate Reference:</b>	Well Glade West
<b>Project:</b>	WELD-NAD83-UTMFT13N	<b>TVD Reference:</b>	4900+28 @ 4928.00usft (Precision 580)
<b>Site:</b>	Glade 3N-66W-02 Pad	<b>MD Reference:</b>	4900+28 @ 4928.00usft (Precision 580)
<b>Well:</b>	Glade West	<b>North Reference:</b>	True
<b>Wellbore:</b>	OH	<b>Survey Calculation Method:</b>	Minimum Curvature
<b>Design:</b>	OH	<b>Database:</b>	EDM 5000 Multi User Db

Survey										
Measured Depth (usft)	Inclination (°)	Azimuth (°)	Vertical Depth (usft)	+N/-S (usft)	+E/-W (usft)	Vertical Section (usft)	Dogleg Rate (°/100usft)	Build Rate (°/100usft)	Turn Rate (°/100usft)	
18,945.00	5.60	219.49	18,902.11	-18.38	-809.86	804.72	0.59	-0.20	-5.67	
18,960.00	5.54	218.83	18,917.04	-19.51	-810.78	805.53	0.59	-0.40	-4.40	
18,975.00	5.50	217.66	18,931.97	-20.64	-811.68	806.32	0.80	-0.27	-7.80	
18,990.00	5.53	216.77	18,946.90	-21.79	-812.55	807.08	0.60	0.20	-5.93	
19,005.00	5.29	214.96	18,961.83	-22.94	-813.38	807.80	1.96	-1.60	-12.07	
19,020.00	5.19	212.83	18,976.77	-24.07	-814.14	808.45	1.46	-0.67	-14.20	
19,035.00	5.16	212.79	18,991.71	-25.21	-814.87	809.08	0.20	-0.20	-0.27	
19,050.00	5.13	212.21	19,006.65	-26.35	-815.60	809.69	0.40	-0.20	-3.87	
19,065.00	5.17	210.76	19,021.59	-27.49	-816.30	810.29	0.91	0.27	-9.67	
19,080.00	5.38	211.96	19,036.52	-28.67	-817.02	810.90	1.58	1.40	8.00	
19,095.00	5.53	212.73	19,051.46	-29.88	-817.78	811.54	1.11	1.00	5.13	
19,110.00	5.77	213.01	19,066.38	-31.12	-818.58	812.23	1.61	1.60	1.87	
19,125.00	5.97	214.00	19,081.30	-32.39	-819.43	812.95	1.49	1.33	6.60	
19,140.00	6.24	214.18	19,096.22	-33.72	-820.32	813.72	1.80	1.80	1.20	
19,155.00	6.45	215.25	19,111.13	-35.08	-821.27	814.54	1.61	1.40	7.13	
19,170.00	6.47	216.20	19,126.03	-36.45	-822.25	815.39	0.72	0.13	6.33	
19,185.00	6.47	215.34	19,140.94	-37.82	-823.24	816.25	0.65	0.00	-5.73	
19,200.00	6.45	214.37	19,155.84	-39.20	-824.21	817.08	0.74	-0.13	-6.47	
19,215.00	6.42	214.40	19,170.75	-40.59	-825.16	817.90	0.20	-0.20	0.20	
19,230.00	6.35	213.48	19,185.65	-41.98	-826.09	818.70	0.83	-0.47	-6.13	
19,245.00	6.41	214.06	19,200.56	-43.36	-827.01	819.49	0.59	0.40	3.87	
19,260.00	6.45	213.95	19,215.47	-44.75	-827.95	820.30	0.28	0.27	-0.73	
19,275.00	6.32	213.18	19,230.37	-46.14	-828.88	821.09	1.04	-0.87	-5.13	
19,290.00	6.28	212.79	19,245.28	-47.52	-829.77	821.86	0.39	-0.27	-2.60	
19,305.00	6.18	211.42	19,260.19	-48.90	-830.64	822.59	1.19	-0.67	-9.13	
19,320.00	6.31	212.55	19,275.10	-50.29	-831.50	823.32	1.19	0.87	7.53	
19,335.00	6.26	212.38	19,290.01	-51.67	-832.38	824.07	0.36	-0.33	-1.13	
19,350.00	6.21	211.75	19,304.93	-53.05	-833.25	824.81	0.56	-0.33	-4.20	
19,365.00	6.25	211.95	19,319.84	-54.44	-834.11	825.53	0.30	0.27	1.33	
19,380.00	6.07	211.40	19,334.75	-55.81	-834.95	826.25	1.26	-1.20	-3.67	
19,395.00	5.93	209.54	19,349.67	-57.16	-835.75	826.92	1.60	-0.93	-12.40	
19,410.00	6.03	210.29	19,364.59	-58.51	-836.53	827.57	0.85	0.67	5.00	
19,425.00	6.06	211.14	19,379.50	-59.87	-837.33	828.25	0.63	0.20	5.67	
19,440.00	6.07	210.72	19,394.42	-61.23	-838.15	828.93	0.30	0.07	-2.80	
19,455.00	5.99	211.45	19,409.34	-62.58	-838.96	829.62	0.74	-0.53	4.87	
19,470.00	5.84	211.14	19,424.26	-63.90	-839.76	830.30	1.02	-1.00	-2.07	
19,485.00	5.88	210.39	19,439.18	-65.21	-840.55	830.95	0.58	0.27	-5.00	
19,500.00	5.97	210.76	19,454.10	-66.55	-841.34	831.62	0.65	0.60	2.47	
19,515.00	5.98	209.10	19,469.02	-67.90	-842.11	832.27	1.15	0.07	-11.07	
19,530.00	5.99	209.57	19,483.93	-69.26	-842.88	832.90	0.33	0.07	3.13	
19,545.00	5.92	209.34	19,498.85	-70.62	-843.65	833.54	0.49	-0.47	-1.53	
19,560.00	5.85	207.85	19,513.77	-71.97	-844.38	834.15	1.12	-0.47	-9.93	
19,575.00	5.90	206.86	19,528.70	-73.33	-845.09	834.73	0.75	0.33	-6.60	

**SDT**  
Survey Report

<b>Company:</b>	Occidental Petroleum_Rockies	<b>Local Co-ordinate Reference:</b>	Well Glade West
<b>Project:</b>	WELD-NAD83-UTMFT13N	<b>TVD Reference:</b>	4900+28 @ 4928.00usft (Precision 580)
<b>Site:</b>	Glade 3N-66W-02 Pad	<b>MD Reference:</b>	4900+28 @ 4928.00usft (Precision 580)
<b>Well:</b>	Glade West	<b>North Reference:</b>	True
<b>Wellbore:</b>	OH	<b>Survey Calculation Method:</b>	Minimum Curvature
<b>Design:</b>	OH	<b>Database:</b>	EDM 5000 Multi User Db

Survey										
Measured Depth (usft)	Inclination (°)	Azimuth (°)	Vertical Depth (usft)	+N/-S (usft)	+E/-W (usft)	Vertical Section (usft)	Dogleg Rate (°/100usft)	Build Rate (°/100usft)	Turn Rate (°/100usft)	
19,590.00	5.97	206.51	19,543.62	-74.72	-845.78	835.29	0.53	0.47	-2.33	
19,605.00	5.96	204.92	19,558.53	-76.12	-846.46	835.84	1.10	-0.07	-10.60	
19,620.00	6.09	204.32	19,573.45	-77.55	-847.12	836.36	0.96	0.87	-4.00	
19,635.00	6.11	202.68	19,588.37	-79.02	-847.75	836.86	1.17	0.13	-10.93	
19,650.00	6.28	202.17	19,603.28	-80.51	-848.37	837.33	1.19	1.13	-3.40	
19,665.00	6.55	203.88	19,618.19	-82.05	-849.02	837.84	2.20	1.80	11.40	
19,680.00	7.03	205.07	19,633.08	-83.67	-849.76	838.43	3.33	3.20	7.93	
19,695.00	8.08	209.37	19,647.95	-85.42	-850.67	839.17	7.95	7.00	28.67	
19,710.00	8.05	208.55	19,662.80	-87.26	-851.68	840.01	0.79	-0.20	-5.47	
19,725.00	8.28	207.79	19,677.65	-89.14	-852.69	840.84	1.69	1.53	-5.07	
19,740.00	8.41	207.88	19,692.49	-91.06	-853.71	841.68	0.87	0.87	0.60	
19,755.00	8.47	206.94	19,707.33	-93.02	-854.72	842.50	1.00	0.40	-6.27	
19,770.00	8.52	205.11	19,722.16	-95.01	-855.69	843.29	1.83	0.33	-12.20	
19,785.00	8.48	204.88	19,737.00	-97.02	-856.63	844.04	0.35	-0.27	-1.53	
19,800.00	8.65	203.90	19,751.83	-99.05	-857.55	844.77	1.49	1.13	-6.53	
19,815.00	8.83	202.57	19,766.66	-101.15	-858.45	845.47	1.80	1.20	-8.87	
19,830.00	8.76	201.92	19,781.48	-103.27	-859.32	846.14	0.81	-0.47	-4.33	
19,845.00	8.81	199.53	19,796.30	-105.41	-860.13	846.75	2.46	0.33	-15.93	
19,860.00	8.98	198.10	19,811.12	-107.61	-860.88	847.29	1.86	1.13	-9.53	
19,875.00	9.13	197.93	19,825.94	-109.85	-861.61	847.81	1.02	1.00	-1.13	
19,890.00	9.11	195.57	19,840.75	-112.13	-862.29	848.28	2.50	-0.13	-15.73	
19,905.00	9.32	194.91	19,855.55	-114.45	-862.92	848.70	1.57	1.40	-4.40	
19,920.00	9.36	191.47	19,870.36	-116.81	-863.48	849.03	3.73	0.27	-22.93	
19,935.00	9.51	189.29	19,885.15	-119.23	-863.92	849.25	2.58	1.00	-14.53	
19,950.00	9.52	188.72	19,899.95	-121.68	-864.31	849.41	0.63	0.07	-3.80	
19,951.00	9.52	188.71	19,900.93	-121.85	-864.33	849.42	0.17	0.00	-1.00	
20,042.00	10.39	185.47	19,990.56	-137.45	-866.26	849.89	1.14	0.96	-3.56	
20,102.00	10.39	185.47	20,049.58	-148.22	-867.29	849.93	0.00	0.00	0.00	
<b>BHL @ 20102' MD-2112' FEL &amp; 1984' FSL</b>										

Design Targets									
Target Name	Dip Angle (°)	Dip Dir. (°)	TVD (usft)	+N/-S (usft)	+E/-W (usft)	Northing (usft)	Easting (usft)	Latitude	Longitude
Glade West SHL - hit/miss target - Shape	0.00	0.00	0.00	0.00	0.00	14,618,806.56	1,713,149.34	40.252551	-104.739325
- actual wellpath hits target center - Point									
Glade West BHL - actual wellpath hits target center - Point	0.00	0.00	20,049.58	-148.22	-867.29	14,618,655.78	1,712,282.49	40.252144	-104.742434

# SDT

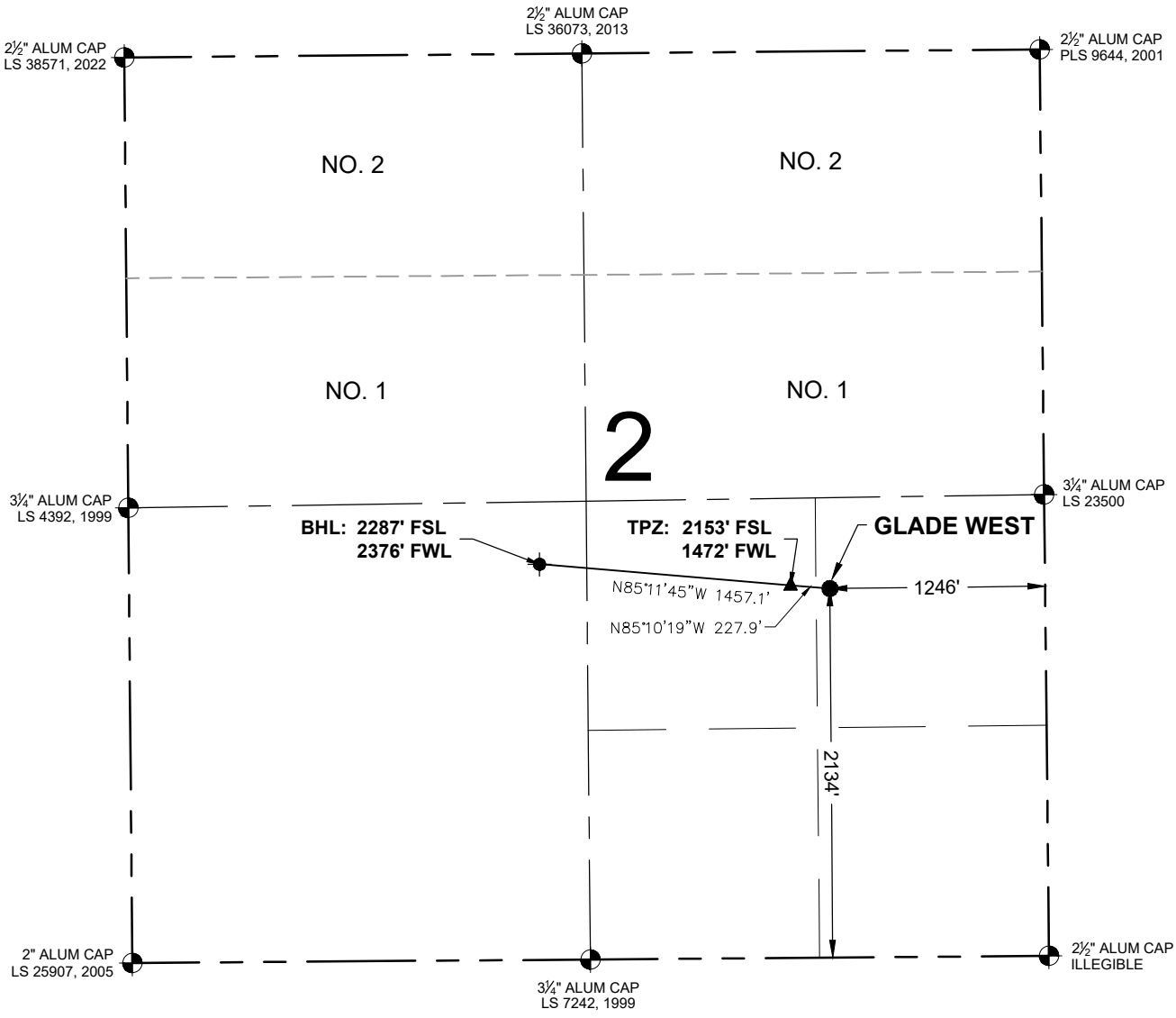
## Survey Report

<b>Company:</b>	Occidental Petroleum_Rockies	<b>Local Co-ordinate Reference:</b>	Well Glade West
<b>Project:</b>	WELD-NAD83-UTMFT13N	<b>TVD Reference:</b>	4900+28 @ 4928.00usft (Precision 580)
<b>Site:</b>	Glade 3N-66W-02 Pad	<b>MD Reference:</b>	4900+28 @ 4928.00usft (Precision 580)
<b>Well:</b>	Glade West	<b>North Reference:</b>	True
<b>Wellbore:</b>	OH	<b>Survey Calculation Method:</b>	Minimum Curvature
<b>Design:</b>	OH	<b>Database:</b>	EDM 5000 Multi User Db

Design Annotations					
Measured Depth (usft)	Vertical Depth (usft)	Local Coordinates		Comment	
		+N/-S (usft)	+E/-W (usft)		
11,021.70	11,019.63	8.52	-94.23	Top Prod @ 11021.70' MD / 1339' FEL & 2141' FSL	
20,102.00	20,049.58	-148.22	-867.29	BHL @ 20102' MD-2112' FEL & 1984' FSL	

Checked By: \_\_\_\_\_ Approved By: \_\_\_\_\_ Date: \_\_\_\_\_

# GLADE WEST WELL LOCATION EXHIBIT



**WELL GLADE WEST TO BE  
LOCATED 2134' FSL & 1246' FEL**

**WELL BORE COORDINATES  
(NAD83)**

**SURFACE LOCATION:**  
GROUND ELEVATION=4900'  
LATITUDE:40.252551°N  
LONGITUDE:104.739325°W

**TOP PRODUCTION ZONE:**  
LATITUDE:40.252609°N  
LONGITUDE:104.740138°W

**BOTTOM HOLE:**  
LATITUDE:40.252978°N  
LONGITUDE:104.745336°W

**WELL NOTES:**  
LAND SURFACE USE - DRY LAND CROP  
SEE LOCATION DRAWING FOR ADDITIONAL IMPROVEMENTS  
WITHIN 500'

PDOP=1.3  
GPS OPERATOR: JOSHUA MCCRACKEN

**NOTES:**

1. THIS FIELD SURVEY CONFORMS TO THE MINIMUM STANDARDS SET BY THE ECMC, RULE NO. 216.
2. ALL BEARINGS ARE GRID BEARINGS OF THE COLORADO STATE PLANE COORDINATE SYSTEM, NORTH ZONE, NORTH AMERICAN DATUM 1983/2011. THE LINEAL DIMENSIONS AS SHOWN HEREIN ARE GRID DISTANCES BASED UPON THE "U.S. SURVEY FOOT." TO DERIVE GROUND DISTANCES MULTIPLY SHOWN DISTANCE BY 1.00027482.
3. FIELD VERIFICATION OF MONUMENTS COMPLETED WITHIN 2 YEARS OF SIGNATURE DATE, UNLESS OTHERWISE NOTED.

**LEGEND**

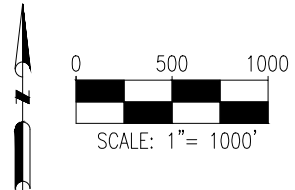
- = EXISTING MONUMENT
- = PROPOSED WELL
- = TOP PRODUCTION ZONE
- = BOTTOM HOLE
- BHL = BOTTOM HOLE

I, KEVIN J. MARTIN, A LICENSED PROFESSIONAL LAND SURVEYOR IN THE STATE OF COLORADO, DO HEREBY STATE TO **OCcidental PETROLEUM** THAT THE WELL LOCATION EXHIBIT SHOWN HEREON WAS PREPARED BY ME OR UNDER MY DIRECT SUPERVISION AND THE DRAWING SHOWN HEREON ACCURATELY DEPICTS THE PROPOSED LOCATION OF THE WELL. THIS EXHIBIT MEETS THE REQUIREMENTS OF A GIS LAND POSITION AS DEFINED BY SECTION 38-51-109.3 C.R.S. AND AS SUCH PER SECTION 38-51-109.3 C.R.S. CANNOT BE RELIED UPON TO DETERMINE OWNERSHIP.



KEVIN J. MARTIN, PLS 38580  
COLORADO LICENSED PROFESSIONAL LAND SURVEYOR  
FOR AND ON BEHALF OF P.F.S., LLC  
d.b.a. ASCENT GEOMATICS SOLUTIONS

NOTICE: ACCORDING TO COLORADO LAW YOU MUST COMMENCE ANY LEGAL ACTION BASED UPON ANY DEFECT IN THIS SURVEY WITHIN THREE YEARS AFTER YOU FIRST DISCOVER SUCH DEFECT. IN NO EVENT MAY ANY ACTION BASED UPON ANY DEFECT IN THIS SURVEY BE COMMENCED MORE THAN TEN YEARS FROM THIS SAID DATE OF THIS CERTIFICATION SHOWN HEREON.



8620 Wellff Court  
Westminster, CO 80031  
(303) 928-7128  
www.ascentgeomatics.com

FIELD DATE: 12-03-24	
DRAWING DATE: 01-20-25	
BY: NJH	CHECKED: HJL

WELL NAME: GLADE WEST
SURFACE LOCATION: NE1/4 SE1/4 SEC. 2, T3N, R66W, 6TH P.M. WELD COUNTY, COLORADO

PREPARED FOR:	
---------------	--