



CDH Consulting, LLC
Thornton, Colorado
720.431.7468
www.CDHConsult.com

Wellhead Closure Investigation and Environmental Summary

WELLS RANCH USX AA13-07 Wellhead

ECMC Remediation Project #40521

Weld County, Colorado

Attachments:

Field Form

Figure 1 – Site Location Map

Figure 2 – Soil Sample and Field Screening Locations Map Map

Table 1 – Field Data Summary Table

Table 2 – Summary of Volatile Organic Soil Chemistry Data

Table 3 – Summary of Polycyclic Aromatic Hydrocarbon Soil Chemistry Data

Table 4 – Summary of Soil Suitability for Reclamation

Table 5 – Summary of Metals in Soil Chemistry Data

Photographic Log

Wellhead Closure Checklist



CDH Consulting, LLC
Thornton, Colorado
720.431.7468
www.CDHConsult.com

FIELD FORM



CDH Consulting, LLC
Thornton, Colorado
720.431.7468
www.CDHConsult.com

FIGURES

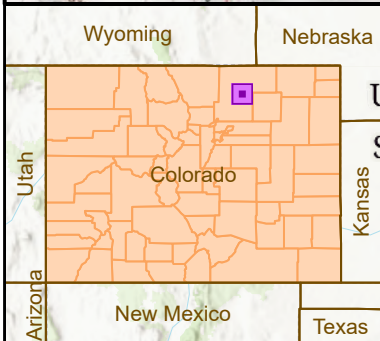
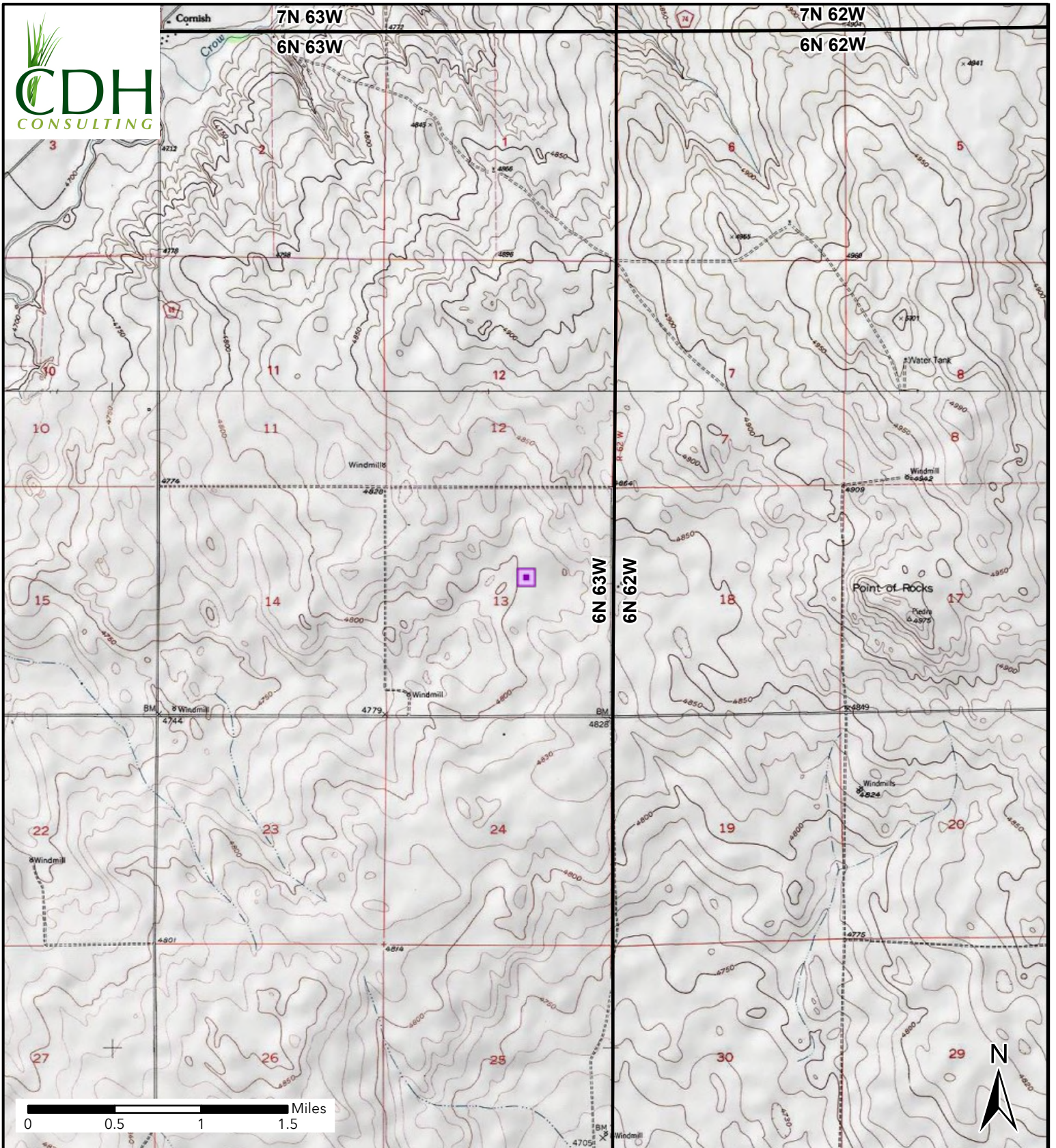

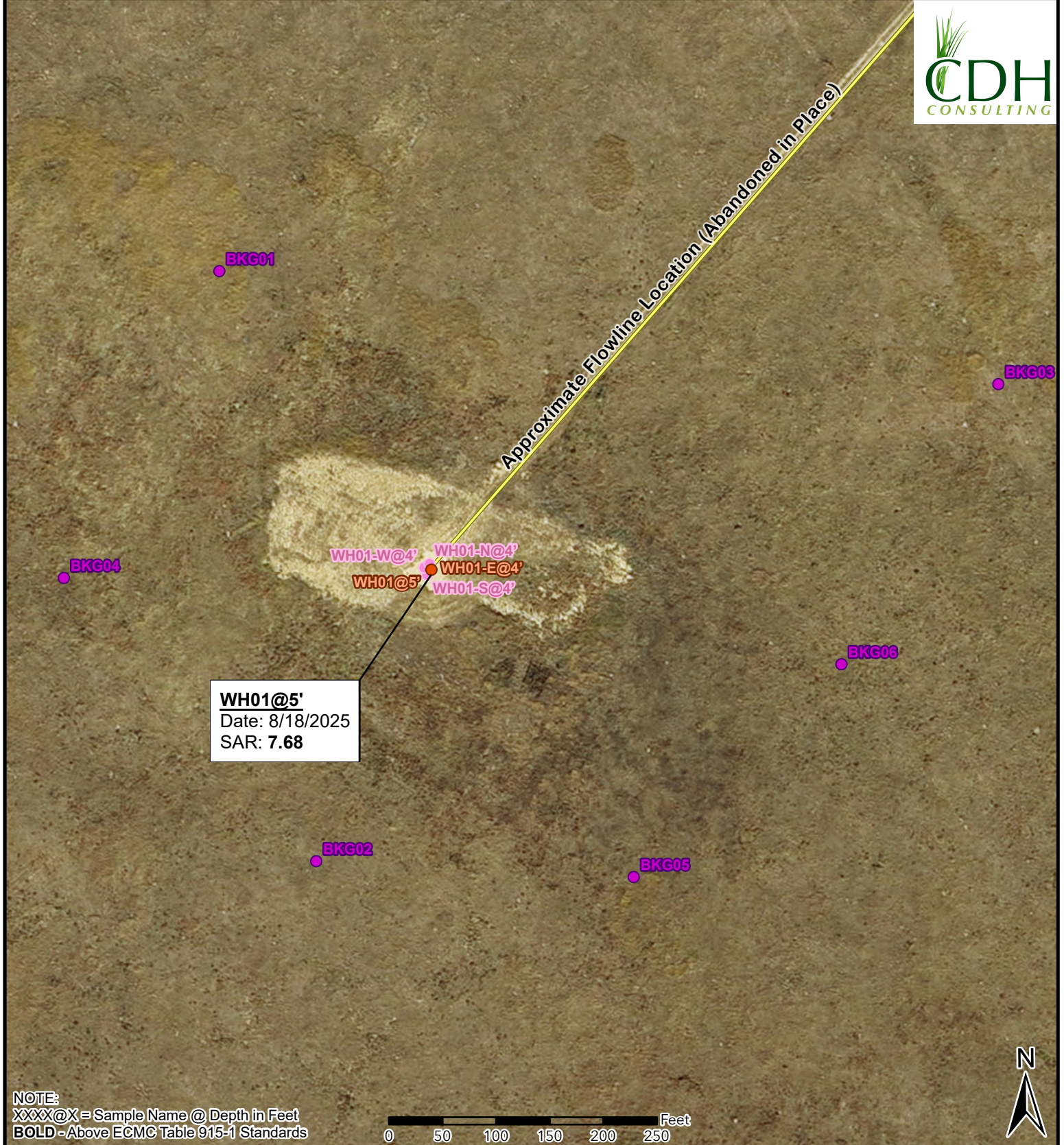


Figure 1
Site Location
WELLS RANCH USX AA13-07
SWNE SEC 13-T6N-R63W
Weld County, Colorado
Noble Energy Inc

 Site Location



WH01@5'
Date: 8/18/2025
SAR: 7.68

NOTE:
XXXX@X = Sample Name @ Depth in Feet
BOLD - Above ECMC Table 915-1 Standards

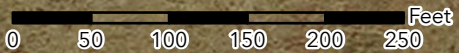


Figure 2
Soil Sample and Field Screening Locations
WELLS RANCH USX AA13-07
SWNE-SEC 13-T6N-R63W
Weld County, Colorado
PDC Energy Inc

- Soil Sample
- Background Sample
- Screening Point
- Flowline Abandoned In Place



CDH Consulting, LLC
Thornton, Colorado
720.431.7468
www.CDHConsult.com

TABLES

TABLE 1
FIELD DATA SUMMARY TABLE
NOBLE 100322
WELLS RANCH USX AA13-07, WELD COUNTY, COLORADO
REM # 40521

Sample ID	Sample Date	Depth (ft)	GPS Data Latitude/Longitude		PDOP Value	VOC Concentration (ppm)
WH01@5'	8/18/2025	5	40.488190	-104.382524	1.800000	3.0
WH01-N@4'	8/18/2025	4	40.488204	-104.382517	1.300000	0.9
WH01-E@4'	8/18/2025	4	40.488189	-104.382512	1.700000	1.9
WH01-S@4'	8/18/2025	4	40.488176	-104.382526	1.100000	1.6
WH01-W@4'	8/18/2025	4	40.488195	-104.382536	1.500000	1.1
BKG01@4.5'	8/18/2025	4.5	40.488967	-104.383220	1.100000	0.6
BKG02@4.5'	8/18/2025	4.5	40.487453	-104.382920	0.900000	0.3
BKG03@4.5'	8/18/2025	4.5	40.488653	-104.380612	1.000000	0.6

1. Global Positioning System (GPS) data is provided in decimal degrees using North American Datum (NAD) 83 UTMZone 13 North.

2. Volatile organic compound (VOC) concentrations are measured in the field using a photoionization detector (PID).

PDOP = Position Dilution of Precision

ppm = Parts per million

ft = Feet

TABLE 2
SUMMARY OF VOLATILE ORGANIC SOIL CHEMISTRY DATA
NOBLE 100322
WELLS RANCH USX AA13-07, WELD COUNTY, COLORADO
REM # 40521

Sample ID	Sample Date	Depth (ft)	Benzene (mg/kg)	Toluene (mg/kg)	Ethyl-Benzene (mg/kg)	Xylenes (mg/kg)	1,2,4-Trimethyl-Benzene (mg/kg)	1,3,5-Trimethyl-Benzene (mg/kg)	Naphthalene (mg/kg)	TPH (mg/kg)	TPH GRO (mg/kg)	TPH DRO (mg/kg)	TPH ORO (mg/kg)
ECMC Table 915-1 Limits (Residential SSL)			1.2	490	5.8	58	30	27	2	500	500**		
ECMC Table 915-1 Limits (Protection of Groundwater SSL)			0.0026	0.69	0.78	9.9	0.0081	0.0087	0.0038	500	500**		
WH01@5'	8/18/2025	5	<0.002	<0.002	<0.002	<0.002	<0.002	<0.002	<0.002	<136.5	<0.219	<27.3	<109
WH01-E@4'	8/18/2025	4	<0.002	<0.002	<0.002	<0.002	<0.002	<0.002	<0.002	<135.2	<0.216	<27.0	<108

1. Bold values exceed the ECMC Table 915-1 limit(s)
 2. Red & blue highlighted soil analytical values indicate an exceedance of the referenced soil screening level (SSL)
 3. * Indicates laboratory minimum detection limit in excess of SSL
 4. ** Summation of GRO+DRO+ORO must be less than 500 mg/kg
- (<) = Analytical result is less than the indicated laboratory reporting limit
TPH-GRO = Total petroleum hydrocarbons - gasoline range organics
TPH-DRO = Total petroleum hydrocarbons - diesel range organics
TPH-ORO = Total petroleum hydrocarbons - oil range organics
mg/kg = Milligrams per kilogram
ft = Feet

TABLE 3
SUMMARY OF POLYCYCLIC AROMATIC HYDROCARBON SOIL CHEMISTRY DATA
NOBLE 100322
WELLS RANCH USX AA13-07, WELD COUNTY, COLORADO
REM # 40521

Sample ID	Sample Date	Depth (ft)	Acenaphthene (mg/kg)	Anthracene (mg/kg)	Benzo (a) Anthracene (mg/kg)	Benzo (a) Pyrene (mg/kg)	Benzo (b) Fluoranthene (mg/kg)	Benzo (k) Fluoranthene (mg/kg)	Chrysene (mg/kg)	Dibenzo (a,h) Anthracene (mg/kg)	Fluoranthene (mg/kg)	Fluorene (mg/kg)	Indeno (1,2,3- cd) Pyrene (mg/kg)	Pyrene (mg/kg)	1-Methyl - Naphthalene (mg/kg)	2-Methyl- Naphthalene (mg/kg)
ECMC Table 915-1 Limits (Residential SSL)			360	1800	1.1	0.11	1.1	11	110	0.11	240	240	1.1	180	18	24
ECMC Table 915-1 Limits (Protection of Groundwater SSL)			0.55	5.8	0.011	0.24	0.3	2.9	9	0.096	8.9	0.54	0.98	1.3	0.006	0.019
WH01@5'	8/18/2025	5	<0.022	<0.022	<0.005	<0.022	<0.022	<0.022	<0.022	<0.022	<0.022	<0.022	<0.022	<0.022	<0.002	<0.002
WH01-E@4'	8/18/2025	4	<0.022	<0.022	<0.005	<0.022	<0.022	<0.022	<0.022	<0.022	<0.022	<0.022	<0.022	<0.022	<0.002	<0.002

1. Bold values exceed the ECMC Table 915-1 limit(s)

2. Red & blue highlighted soil analytical values indicate an exceedance of the referenced soil screening level (SSL)

3. * Indicates laboratory minimum detection limit in excess of SSL

(<) = Analytical result is less than the indicated laboratory reporting limit

mg/kg = Milligrams per kilogram

ft = Feet

TABLE 4
SUMMARY OF SOIL SUITABILITY FOR RECLAMATION
NOBLE 100322
WELLS RANCH USX AA13-07, WELD COUNTY, COLORADO
REM # 40521

Sample ID	Sample Date	Depth (ft)	pH (Standard Units)	EC (mmhos/cm)	SAR (Standard Units)	Boron (mg/L)
ECMC Table 915-1 Soil Suitability Limits			6 - 8.3	<4	<6	2
WH01@5'	8/18/2025	5	8.31	1.18	7.68	0.795
WH01-E@4'	8/18/2025	4	7.83	0.850	0.602	0.350
BKG01@4.5'	8/18/2025	4.5	7.55	0.0687	0.150	0.161
BKG02@4.5'	8/18/2025	4.5	7.34	0.0386	0.109	0.123
BKG03@4.5'	8/18/2025	4.5	8.33	0.122	0.113	0.203
Maximum Background Concentration			8.33	0.122	0.150	0.203

1. **Bold** faced values exceed the ECMC Table 915-1 limit(s), but are within background concentrations.

2. **Bold** faced values exceed the ECMC Table 915-1 limit(s) and native background concentrations.

3. Brown highlighted soil analytical values indicate a regulatory exceedance.

ft = Feet

EC = Electrical Conductivity

SAR = Sodium adsorption ratio

mmhos/cm = millimhos per centimeter

mg/L = milligrams per liter

(<) = Analytical result is less than the indicated laboratory reporting limit

TABLE 5
SUMMARY OF METALS IN SOIL CHEMISTRY DATA
NOBLE 100322
WELLS RANCH USX AA13-07, WELD COUNTY, COLORADO
REM # 40521

Sample ID	Sample Date	Depth (ft)	Arsenic (mg/kg)	Barium (mg/kg)	Cadmium (mg/kg)	Chromium (VI) (mg/kg)	Copper (mg/kg)	Lead (mg/kg)	Nickel (mg/kg)	Selenium (mg/kg)	Silver (mg/kg)	Zinc (mg/kg)
ECMC Table 915-1 Limits (Residential SSL)			0.68	15000	71	0.3	3100	400	1500	390	390	23000
ECMC Table 915-1 Limits (Protection of Groundwater SSL)			0.29	82	0.38	0.00067	46	14	26	0.26	0.8	370
WH01@5'	8/18/2025	5	3.52	72.7	<0.310	<0.25*	<37.5	<11.4	<21.2	<0.201	<0.653	<302
WH01-E@4'	8/18/2025	4	2.80	<58.6	<0.273	<0.22*	<33.0	<10.1	<18.7	<0.177	<0.575	<266
BKG01@4.5'	8/18/2025	4.5	2.93	55.6	<0.248	<0.25*	<30.0	<9.14	<17.0	<0.161	<0.523	<242
BKG02@4.5'	8/18/2025	4.5	4.70	<57.4	<0.267	<0.26*	<32.4	<9.85	<18.3	<0.173	<0.563	<260
BKG03@4.5'	8/18/2025	4.5	2.66	149	<0.250	<0.22*	<30.2	13.1	<17.1	<0.162	<0.526	<243
1.25x Maximum Background Concentration			5.88	186	NA	NA	NA	16.4	NA	NA	NA	NA

- Bold** faced values exceed the ECMC Table 915-1 limit(s), but are within 1.25x background concentrations.
 - Red** faced values exceed the ECMC Table 915-1 limit(s) and native background concentrations.
 - Red & blue highlighted soil analytical values indicate an exceedance of the referenced soil screening level (SSL).
 - Non-detect background results accounted for in the highest background concentration by using the reporting limit.
- (<) = Analytical result is less than the indicated laboratory reporting limit
mg/kg = Milligrams per kilogram
ft = Feet
* Indicates laboratory minimum detection limit in excess of SSL
NA = Not analyzed



CDH Consulting, LLC
Thornton, Colorado
720.431.7468
www.CDHConsult.com

PHOTOGRAPHIC LOG

Photographic Log

WELLS RANCH USX AA13-07 - REM #40521

Noble Energy, Inc.

08/18/2025



Photo 1: View of excavation extent, facing northeast

Photographic Log

WELLS RANCH USX AA13-07 - REM #40521

Noble Energy, Inc.

08/18/2025



Photo 2: View of excavation extent, facing south

Photographic Log

WELLS RANCH USX AA13-07 - REM #40521

Noble Energy, Inc.

08/18/2025

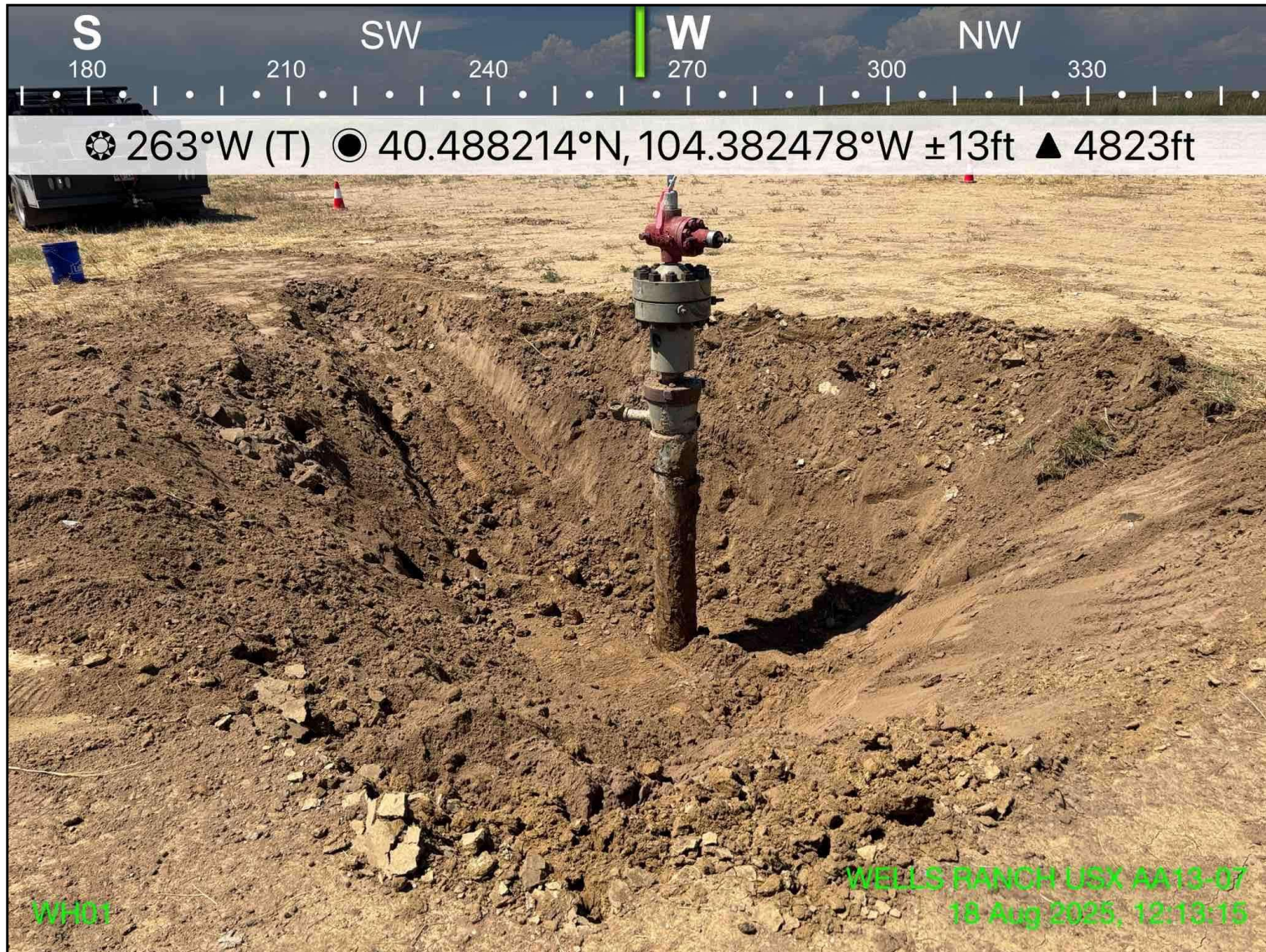


Photo 3: View of excavation extent, facing west

Photographic Log

WELLS RANCH USX AA13-07 - REM #40521

Noble Energy, Inc.

08/18/2025



Photo 4: View of excavation extent, facing north

Photographic Log

WELLS RANCH USX AA13-07 - REM #40521

Noble Energy, Inc.

08/18/2025



Photo 5: View of BKG01 sample location, facing east

Photographic Log

WELLS RANCH USX AA13-07 - REM #40521

Noble Energy, Inc.

08/18/2025

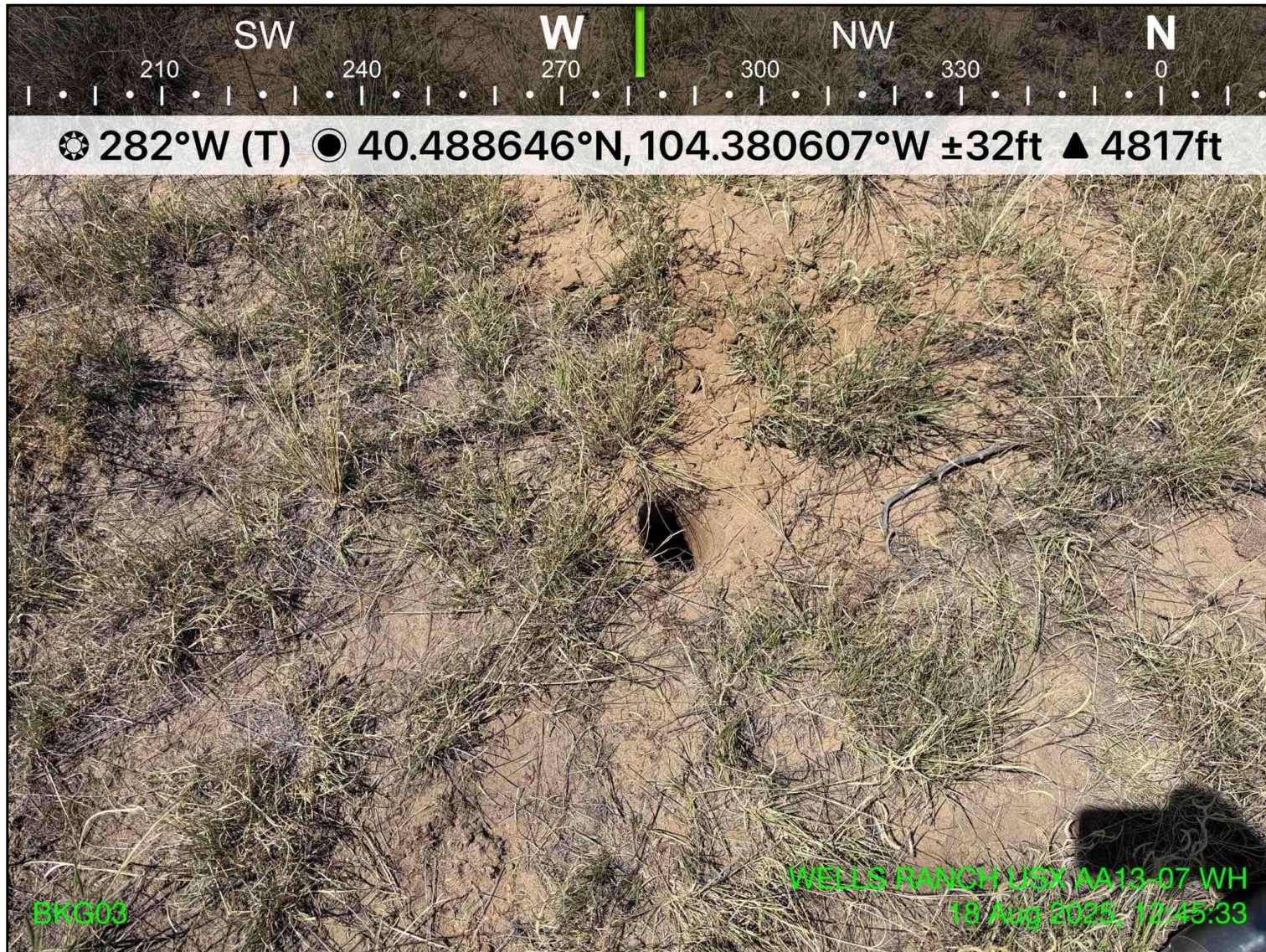


Photo 6: View of BKG02 sample location, facing west

Photographic Log

WELLS RANCH USX AA13-07 - REM #40521

Noble Energy, Inc.

08/18/2025

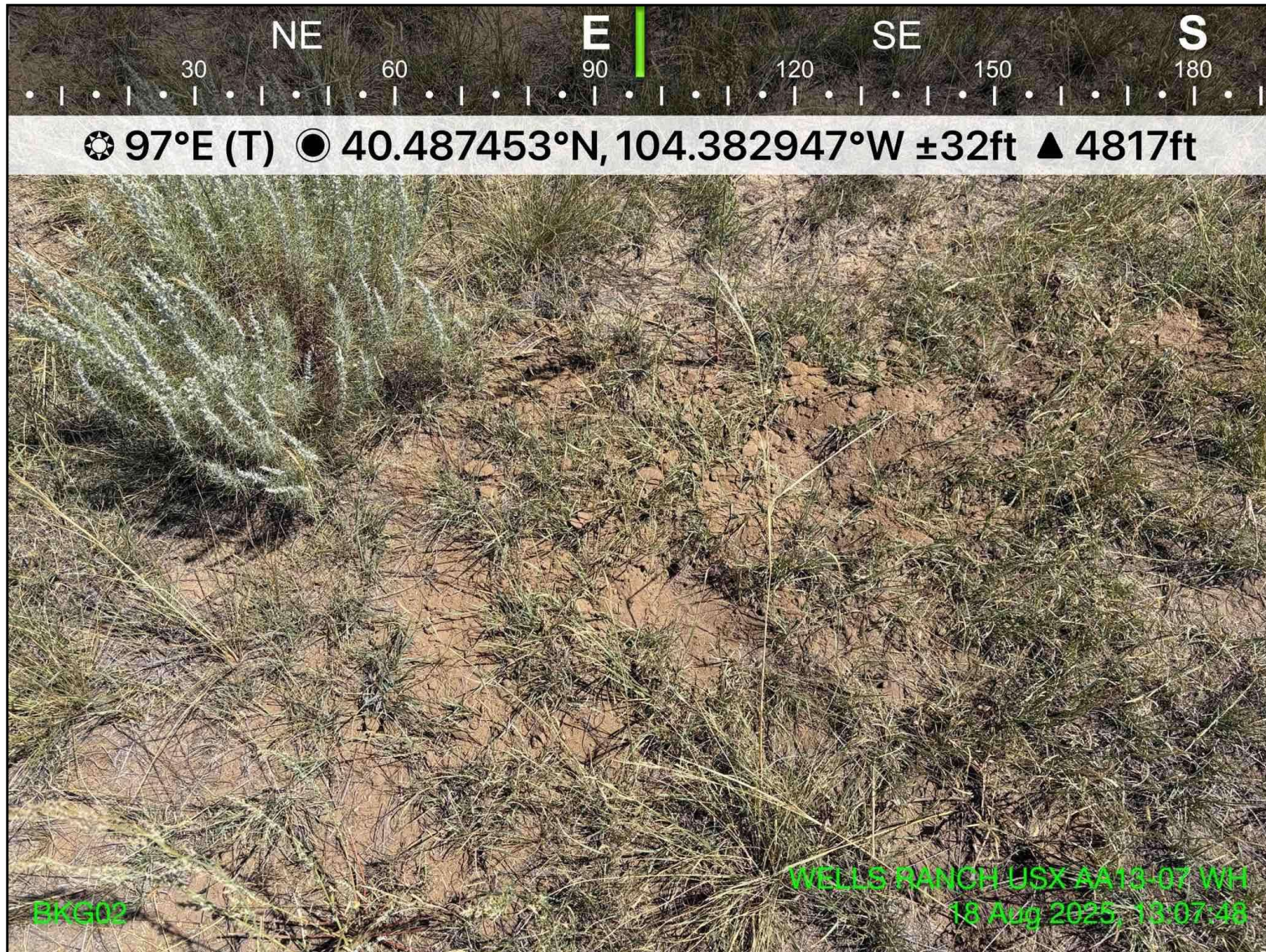


Photo 7: View of BKG03 sample location, facing east



CDH Consulting, LLC
Thornton, Colorado
720.431.7468
www.CDHConsult.com

WELLHEAD CLOSURE CHECKLIST

Wellhead Closure Checklist

COGCC Rule 911.a.(4) Environmental Site Closure Assessment Field Form

Additional attachments (optional):		Pit Closure		Tank Battery Closure		Flowline Closure		Partially Buried Vault Closure
------------------------------------	--	-------------	--	----------------------	--	------------------	--	--------------------------------

Site Name & ECMC Facility Number: <i>WELLS RANCH USX AA13-07 / # 299075</i>	Date: <i>8/18/2025</i>	Remediation Project #: <i>40521</i>
Associated Wells: <i>WELLS RANCH USX AA13-07</i>	Age of Site: <i>5/9/2009 (Spud Date)</i>	Number of Photos Attached: <i>7</i>
Location: <i>40.488192, -104.382519</i>		Estimated Facility Size: <i>0.1 acre</i>

General Condition of Site: Good

USCS Soil Type: Poorly-graded Sands (SP) Estimated Depth to Groundwater: Groundwater not encountered

Hydrocarbon Impacted Soils / Spills: Not encountered

Salt Crusted Soils or Impacted Vegetation: Not encountered

Wellhead(s)

Well API	05-123-29242					
Age	5/9/2009 (Spud Date)					
Condition of surface	Good					
PID Readings	0.3-3.0 ppm					
Condition of subsurface	Good					
PID Readings	0.3-3.0 ppm					
Sample taken? Location/Sample ID#	See attached					
Photo Number(s)	See attached					

Other observations regarding wellheads: None

Summary

<i>Was impacted soil identified?</i>	
No Yes - less than 10 cubic yards Yes - more than 10 cubic yards	
Total number of samples field screened: <i>5</i>	Total number of samples collected: <i>2</i>
Highest PID Reading: <i>3.0 ppm</i>	Total number of samples submitted to lab for analysis: <i>2</i>
<i>If more than 10 cubic yards of impacted soil were observed:</i>	
Vertical extent:	Estimated spill volume:
Lateral extent:	Volume of soil removed:
<i>Is additional investigation required?</i>	
<i>Was groundwater encountered during the investigation?</i>	
No Yes - not impacted or in contact with impacted soils Yes - groundwater impacted and/or in contact with impacted soils	
Measured depth to groundwater:	Was remedial groundwater removal conducted? Yes No
Date Groundwater was encountered:	Commencement date of removal:
Sheen on groundwater? Yes No	Volume of groundwater removed prior to sampling:
Free product observed? Yes No	Volume of groundwater removed post sampling:
Total number of samples collected:	Total Volume of groundwater removed:
Total number of samples submitted to lab for analysis:	