

**INITIAL DECOMMISSIONING REPORT
SESE 36-7N-64W STATE THOLEN TB
LOC TANK BATTERY**

ECMC REMEDIATION # 40315

Prepared for:

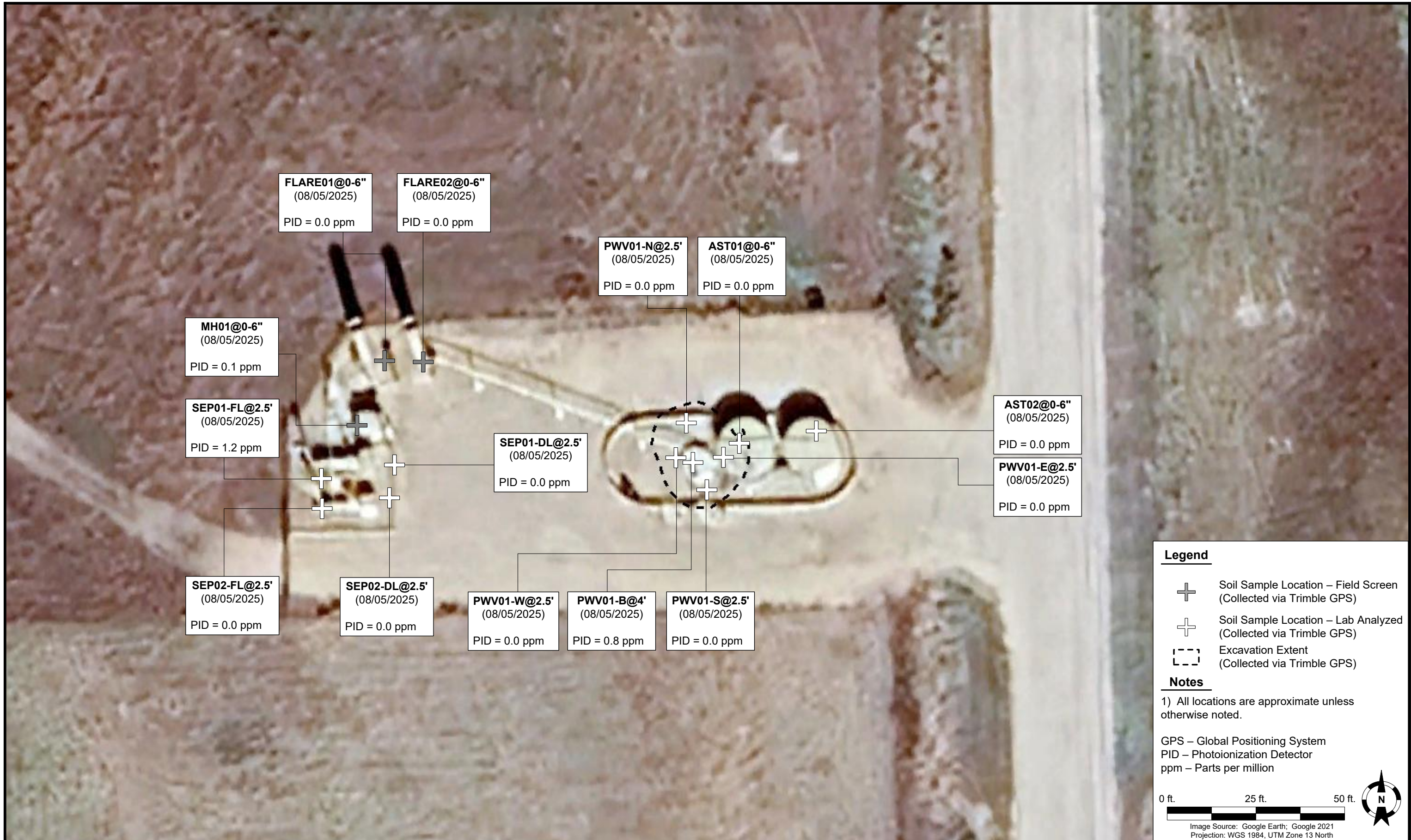


1099 18th Street
Suite 1500
Denver, CO 80202

Prepared by:



4725 Independence Street
Wheat Ridge, CO 80033



DATE: October 10, 2025

DESIGNED BY: J. Whritenour

DRAWN BY: D. Brokaw





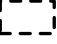
Noble Energy, Inc – 100322 – DJ Basin
SESE 36-7N-64W State Tholen TB Loc
 SESE, Section 36, Township 7 North, Range 64 West
 Weld County, Colorado

SOIL SAMPLE LOCATION MAP (TANK BATTERY)

FIGURE 1



Legend

-  Soil Sample Location – Field Screen (Collected via Trimble GPS)
-  Soil Sample Location – Lab Analyzed (Collected via Trimble GPS)
-  Excavation Extent (Collected via Trimble GPS)

Notes

1) All locations are approximate unless otherwise noted.

GPS – Global Positioning System
 PID – Photoionization Detector
 ppm – Parts per million


0 ft. 25 ft. 50 ft. 

Image Source: Google Earth; Google 2021
 Projection: WGS 1984, UTM Zone 13 North

DATE: October 10, 2025

DESIGNED BY: J. Whritenour

DRAWN BY: D. Brokaw



Tasman, Inc.
 4725 Independence Street
 Wheat Ridge, CO 80033

Noble Energy, Inc – 100322 – DJ Basin
SESE 36-7N-64W State Tholen TB Loc
 SESE, Section 36, Township 7 North, Range 64 West
 Weld County, Colorado

SOIL SAMPLE LOCATION MAP (TANK BATTERY)

FIGURE 2

TABLE 1
FIELD DATA SUMMARY TABLE
NOBLE ENERGY, INC. - 100322
SESE 36-7N-64W STATE THOLEN TB LOC, WELD COUNTY, COLORADO
REM # 40315



Sample ID	Sample Date	Depth (ft. bgs)	GPS Data ¹		PDOP Value	VOC Concentration ² (ppm)
			Latitude/Longitude			
FS01@4'	08/04/2025	4	40.524463	-104.490349	0.8	0.0
SS01@3'	08/04/2025	3	40.524456	-104.490344	0.9	2.2
SS02@3'	08/04/2025	3	40.524456	-104.490351	0.8	0.1
SS03@3'	08/04/2025	3	40.524463	-104.490351	0.8	0.0
SS04@3'	08/04/2025	3	40.524464	-104.490339	0.8	0.0
AST01@0-6"	08/05/2025	0-0.5	40.524113	-104.489148	0.7	0.0
AST02@0-6"	08/05/2025	0-0.5	40.524123	-104.489070	0.7	0.0
SEP01-FL@2.5'	08/05/2025	2.5	40.524088	-104.489573	0.9	1.2
SEP01-DL@2.5'	08/05/2025	2.5	40.524099	-104.489498	0.8	0.0
SEP02-FL@2.5'	08/05/2025	2.5	40.524065	-104.489572	0.8	0.0
SEP02-DL@2.5'	08/05/2025	2.5	40.524073	-104.489504	0.8	0.0
PWV01-B@4'	08/05/2025	4	40.524099	-104.489195	0.8	0.8
PWV01-N@2.5'	08/05/2025	2.5	40.524129	-104.489203	0.8	0.0
PWV01-E@2.5'	08/05/2025	2.5	40.524102	-104.489164	0.8	0.0
PWV01-S@2.5'	08/05/2025	2.5	40.524077	-104.489182	0.8	0.0
PWV01-W@2.5'	08/05/2025	2.5	40.524103	-104.489212	0.8	0.0
FLARE01@0-6"	08/05/2025	0-0.5	40.524179	-104.489508	0.8	0.0
FLARE02@0-6"	08/05/2025	0-0.5	40.524177	-104.489468	0.8	0.0
MH01@0-6"	08/05/2025	0-0.5	40.524128	-104.489536	0.8	0.1

1. Global Positioning System (GPS) data is provided in decimal degrees using North American Datum (NAD) 83 UTM Zone 13 North.

2. Volatile organic compound (VOC) concentrations are measured in the field using a photoionization detector (PID).

PDOP = Position Dilution of Precision

ppm = Parts per million

ft. = Feet

bgs = Below ground surface

Source material characterization sample, excavated and transported off site for disposal.

Material excavated and transported off site for disposal.

TABLE 2
SUMMARY OF VOLATILE ORGANIC SOIL CHEMISTRY DATA
NOBLE ENERGY, INC. - 100322
SESE 36-7N-64W STATE THOLEN TB LOC, WELD COUNTY, COLORADO
REM # 40315



Sample ID	Sample Date	Depth (ft. bgs)	Benzene (mg/kg)	Toluene (mg/kg)	Ethyl-Benzene (mg/kg)	Xylenes (mg/kg)	1,2,4-Trimethyl-Benzene (mg/kg)	1,3,5-Trimethyl-Benzene (mg/kg)	Naphthalene (mg/kg)	TPH (mg/kg)	TPH GRO (mg/kg)	TPH DRO (mg/kg)	TPH ORO (mg/kg)
ECMC Table 915-1 Limits (Residential SSL)			1.2	490	5.8	58	30	27	2	500	500**		
ECMC Table 915-1 Limits (Protection of Groundwater SSL)			0.0026	0.69	0.78	9.9	0.0081	0.0087	0.0038	500	500**		
FS01@4'	08/04/2025	4	<0.0011	<0.0023	<0.0023	<0.0023	<0.0023	<0.0023	<0.0023	<6.6	<0.23	<4.4	<6.6
SS01@3'	08/04/2025	3	<0.0011	<0.0022	<0.0022	<0.0022	<0.0022	<0.0022	<0.0023	<6.8	<0.22	<4.5	<6.8
SS02@3'	08/04/2025	3	<0.0011	<0.0022	<0.0022	<0.0022	<0.0022	<0.0022	<0.0023	<6.7	<0.22	<4.5	<6.7
SS03@3'	08/04/2025	3	<0.0011	<0.0022	<0.0022	<0.0022	<0.0022	<0.0022	<0.0022	<6.7	<0.22	<4.5	<6.7
SS04@3'	08/04/2025	3	<0.0011	<0.0023	<0.0023	<0.0023	<0.0023	<0.0023	<0.0023	<6.6	<0.23	<4.4	<6.6
AST01@0-6"	08/05/2025	0.5	<0.0011	<0.0022	<0.0022	<0.0022	<0.0022	<0.0022	<0.012	<6.2	<0.22	<4.1	<6.2
AST02@0-6"	08/05/2025	0.5	<0.0011	<0.0021	<0.0021	<0.0021	<0.0021	<0.0021	<0.0022	<6.6	<0.21	<4.4	<6.6
SEP01-FL@2.5'	08/05/2025	2.5	<0.0011	<0.0022	<0.0022	<0.0022	<0.0022	<0.0022	<0.0022	<6.1	<0.22	<4.1	<6.1
SEP01-DL@2.5'	08/05/2025	2.5	<0.0010	<0.0021	<0.0021	<0.0021	<0.0021	<0.0021	<0.0021	<6.4	<0.21	<4.3	<6.4
SEP02-FL@2.5'	08/05/2025	2.5	<0.0012	<0.0023	<0.0023	<0.0023	<0.0023	<0.0023	<0.0024	<7.2	<0.23	<4.8	<7.2
SEP02-DL@2.5'	08/05/2025	2.5	<0.0011	<0.0023	<0.0023	<0.0023	<0.0023	<0.0023	<0.0023	<6.8	<0.23	<4.6	<6.8
PWV01-B@4'	08/05/2025	4.0	<0.0012	<0.0023	<0.0023	<0.0023	<0.0023	<0.0023	<0.0024	38.0	<0.23	19.4	18.6
PWV01-N@2.5'	08/05/2025	2.5	<0.0012	<0.0023	<0.0023	<0.0023	<0.0023	<0.0023	<0.0024	10.3	<0.23	<4.7	10.3
PWV01-E@2.5'	08/05/2025	2.5	<0.0011	<0.0022	<0.0022	<0.0022	<0.0022	<0.0022	<0.0024	<7.0	<0.22	<4.7	<7.0
PWV01-S@2.5'	08/05/2025	2.5	<0.0011	<0.0022	<0.0022	<0.0022	<0.0022	<0.0022	<0.0023	<7.1	<0.22	<4.7	<7.1
PWV01-W@2.5'	08/05/2025	2.5	<0.0011	<0.0022	<0.0022	<0.0022	<0.0022	<0.0022	<0.0022	83.3	<0.22	43.4	39.9

- 1. Bold values exceed the ECMC Table 915-1 limit(s).**
- 2. Red & blue highlighted soil analytical values indicate an exceedance of the referenced soil screening level (SSL).**
- 3. ** Summation of GRO+DRO+ORO must be less than 500 mg/kg.**

ECMC = Energy and Carbon Management Commission

(<) = Analytical result is less than the indicated laboratory reporting limit.

TPH-GRO = Total petroleum hydrocarbons - gasoline range organics

TPH-DRO = Total petroleum hydrocarbons - diesel range organics

TPH-ORO = Total petroleum hydrocarbons - oil range organics

mg/kg = Milligrams per kilogram

ft. = Feet

bgs = Below ground surface

NA = Not analyzed

Source material characterization sample, excavated and transported off site for disposal.

Material excavated and transported off site for disposal.

TABLE 3
SUMMARY OF POLYCYCLIC AROMATIC HYDROCARBON SOIL CHEMISTRY DATA
NOBLE ENERGY, INC. - 100322
SESE 36-7N-64W STATE THOLEN TB LOC, WELD COUNTY, COLORADO
REM # 40315



Sample ID	Sample Date	Depth (ft. bgs)	Acenaphthene (mg/kg)	Anthracene (mg/kg)	Benzo (a) Anthracene (mg/kg)	Benzo (a) Pyrene (mg/kg)	Benzo (b) Fluoranthene (mg/kg)	Benzo (k) Fluoranthene (mg/kg)	Chrysene (mg/kg)	Dibenzo (a,h) Anthracene (mg/kg)	Fluoranthene (mg/kg)	Fluorene (mg/kg)	Indeno (1,2,3-cd) Pyrene (mg/kg)	Pyrene (mg/kg)	1-Methyl-Naphthalene (mg/kg)	2-Methyl-Naphthalene (mg/kg)
ECMC Table 915-1 Limits (Residential SSL)			360	1800	1.1	0.11	1.1	11	110	0.11	240	240	1.1	180	18	24
ECMC Table 915-1 Limits (Protection of Groundwater SSL)			0.55	5.8	0.011	0.24	0.3	2.9	9	0.096	8.9	0.54	0.98	1.3	0.006	0.019
FS01@4'	08/04/2025	4	<0.0046	<0.0046	<0.0057	<0.0046	<0.0046	<0.0046	<0.0046	<0.0046	<0.0046	<0.0046	<0.0046	<0.0046	<0.0046	<0.0046
SS01@3'	08/04/2025	3	<0.0046	<0.0046	<0.0057	<0.0046	<0.0046	<0.0046	<0.0046	<0.0046	<0.0046	<0.0046	<0.0046	<0.0046	<0.0046	<0.0046
SS02@3'	08/04/2025	3	<0.0045	<0.0045	<0.0056	<0.0045	<0.0045	<0.0045	<0.0045	<0.0045	<0.0045	<0.0045	<0.0045	<0.0045	<0.0045	<0.0045
SS03@3'	08/04/2025	3	<0.0044	<0.0044	<0.0056	<0.0044	<0.0044	<0.0044	<0.0044	<0.0044	<0.0044	<0.0044	<0.0044	<0.0044	<0.0044	<0.0044
SS04@3'	08/04/2025	3	<0.0046	<0.0046	<0.0057	<0.0046	<0.0046	<0.0046	<0.0046	<0.0046	<0.0046	<0.0046	<0.0046	<0.0046	<0.0046	<0.0046
AST01@0-6"	08/05/2025	0.5	<0.024	<0.024	<0.030	<0.024	<0.024	<0.024	<0.024	<0.024	<0.024	<0.024	<0.024	<0.024	<0.024	<0.024
AST02@0-6"	08/05/2025	0.5	<0.0045	<0.0045	<0.0056	<0.0045	<0.0045	<0.0045	<0.0045	<0.0045	<0.0045	<0.0045	<0.0045	<0.0045	<0.0045	<0.0045
SEP01-FL@2.5'	08/05/2025	2.5	<0.0044	<0.0044	<0.0055	<0.0044	<0.0044	<0.0044	<0.0044	<0.0044	<0.0044	<0.0044	<0.0044	<0.0044	<0.0044	<0.0044
SEP01-DL@2.5'	08/05/2025	2.5	<0.0042	<0.0042	<0.0053	<0.0042	<0.0042	<0.0042	<0.0042	<0.0042	<0.0042	<0.0042	<0.0042	<0.0042	<0.0042	<0.0042
SEP02-FL@2.5'	08/05/2025	2.5	<0.0048	<0.0048	<0.0060	<0.0048	<0.0048	<0.0048	<0.0048	<0.0048	<0.0048	<0.0048	<0.0048	<0.0048	<0.0048	<0.0048
SEP02-DL@2.5'	08/05/2025	2.5	<0.0046	<0.0046	<0.0057	<0.0046	<0.0046	<0.0046	<0.0046	<0.0046	<0.0046	<0.0046	<0.0046	<0.0046	<0.0046	<0.0046
PWV01-B@4'	08/05/2025	4.0	<0.0048	<0.0048	<0.0059	<0.0048	<0.0048	<0.0048	<0.0048	<0.0048	<0.0048	<0.0048	<0.0048	<0.0048	0.0059	<0.0048
PWV01-N@2.5'	08/05/2025	2.5	<0.0047	<0.0047	<0.0059	<0.0047	<0.0047	<0.0047	<0.0047	<0.0047	<0.0047	<0.0047	<0.0047	<0.0047	<0.0047	<0.0047
PWV01-E@2.5'	08/05/2025	2.5	<0.0047	<0.0047	<0.0059	<0.0047	<0.0047	<0.0047	<0.0047	<0.0047	<0.0047	<0.0047	<0.0047	<0.0047	<0.0047	<0.0047
PWV01-S@2.5'	08/05/2025	2.5	<0.0045	<0.0045	<0.0057	<0.0045	<0.0045	<0.0045	<0.0045	<0.0045	<0.0045	<0.0045	<0.0045	<0.0045	<0.0045	<0.0045
PWV01-W@2.5'	08/05/2025	2.5	<0.0044	<0.0044	<0.0055	<0.0044	<0.0044	<0.0044	<0.0044	<0.0044	0.0047	0.0045	<0.0044	0.0045	0.0058	<0.0044

1. Bold values exceed the ECMC Table 915-1 limit(s).
2. Red & blue highlighted soil analytical values indicate an exceedance of the referenced soil screening level (SSL).
3. * Indicates laboratory minimum detection limit in excess of SSL.

ECMC = Energy and Carbon Management Commission
(<) = Analytical result is less than the indicated laboratory reporting limit.
mg/kg = Milligrams per kilogram
ft. = Feet

bgs = Below ground surface
NA = Not analyzed

Source material characterization sample, excavated and transported off site for disposal.
Material excavated and transported off site for disposal.

TABLE 4
SUMMARY OF SOIL SUITABILITY FOR RECLAMATION
NOBLE ENERGY, INC. - 100322
SESE 36-7N-64W STATE THOLEN TB LOC, WELD COUNTY, COLORADO
REM # 40315



Sample ID	Sample Date	Depth (ft. bgs)	pH (Standard Units)	EC (mmhos/cm)	SAR (Standard Units)	Boron (mg/L)
ECMC Table 915-1 Soil Suitability Limits			6 - 8.3	<4	<6	2
FS01@4'	08/04/2025	4	7.08	0.15	0.173	<0.50
SS01@3'	08/04/2025	3	6.93	0.59	1.02	<0.50
SS02@3'	08/04/2025	3	6.83	0.25	0.202	<0.50
SS03@3'	08/04/2025	3	7.15	0.27	0.126	<0.50
SS04@3'	08/04/2025	3	7.32	0.27	0.227	<0.50
AST01@0-6"	08/05/2025	0.5	7.83	0.24	0.0696	<0.50
AST02@0-6"	08/05/2025	0.5	7.89	0.87	0.731	<0.50
SEP01-FL@2.5'	08/05/2025	2.5	7.90	0.33	0.132	<0.50
SEP01-DL@2.5'	08/05/2025	2.5	8.14	0.29	0.273	<0.50
SEP02-FL@2.5'	08/05/2025	2.5	8.12	0.30	0.404	<0.50
SEP02-DL@2.5'	08/05/2025	2.5	7.92	0.45	0.881	<0.50
PWV01-B@4'	08/05/2025	4.0	8.12	0.32	1.17	<0.50
PWV01-N@2.5'	08/05/2025	2.5	7.86	0.37	0.740	<0.50
PWV01-E@2.5'	08/05/2025	2.5	7.85	0.27	0.631	<0.50
PWV01-S@2.5'	08/05/2025	2.5	7.94	1.4	4.52	<0.50
PWV01-W@2.5'	08/05/2025	2.5	7.87	0.48	0.991	<0.50
Maximum Background Concentration			-	-	-	-

1. **Bold** faced values exceed the ECMC Table 915-1 limit(s), but are within background concentrations.
2. **Red** faced values exceed the ECMC Table 915-1 limit(s) and native background concentrations.
3. Brown highlighted soil analytical values indicate a regulatory exceedance.

ECMC = Energy and Carbon Management Commission

(<) = Analytical result is less than the indicated laboratory reporting limit.

mg/L = Milligrams per liter

ft. = Feet

bgs = Below ground surface

NA = Not analyzed

EC = Electrical conductivity

SAR = Sodium adsorption ratio

mmhos/cm = Millimohs per centimeter

Source material characterization sample, excavated and transported off site for disposal.

Material excavated and transported off site for disposal.

TABLE 5
SUMMARY OF METALS IN SOIL CHEMISTRY DATA
NOBLE ENERGY, INC. - 100322
SESE 36-7N-64W STATE THOLEN TB LOC, WELD COUNTY, COLORADO
REM # 40315



Sample ID	Sample Date	Depth (ft. bgs)	Arsenic (mg/kg)	Barium (mg/kg)	Cadmium (mg/kg)	Chromium (VI) ⁶ (mg/kg)	Copper (mg/kg)	Lead (mg/kg)	Nickel (mg/kg)	Selenium (mg/kg)	Silver (mg/kg)	Zinc (mg/kg)
ECMC Table 915-1 Limits (Residential SSL)			0.68	15000	71	0.3	3100	400	1500	390	390	23000
ECMC Table 915-1 Limits (Protection of Groundwater SSL)			0.29	82	0.38	0.00067	46	14	26	0.26	0.8	370
FS01@4'	08/04/2025	4	<5.9	62.8	<0.30	<0.46	9.1	7.5	7.8	<0.59	<0.59	35.0
SS01@3'	08/04/2025	3	<5.6	47.3	<0.28	<0.46	<5.6	5.7	<5.6	<5.6	<0.56	26.6
SS02@3'	08/04/2025	3	<5.3	42.2	<0.27	<0.44	5.3	5.4	6.0	<5.3	<0.53	25.4
SS03@3'	08/04/2025	3	<5.3	51.2	<0.26	<0.45	6.9	6.4	7.2	<5.3	<0.53	31.7
SS04@3'	08/04/2025	3	<5.3	53.8	<0.26	<0.48	7.4	6.3	7.2	<5.3	<0.53	29.2
AST01@0-6"	08/05/2025	0.5	3.2	62.5	0.18	0.56	5.4	6.4	5.2	<0.23	<0.059	23.9
AST02@0-6"	08/05/2025	0.5	2.1	37.0	0.095	<0.43	3.8	4.9	3.3	<0.22	<0.055	15.9
SEP01-FL@2.5'	08/05/2025	2.5	3.0	53.7	0.21	<0.45	4.2	5.0	4.2	<0.22	<0.055	16.8
SEP01-DL@2.5'	08/05/2025	2.5	3.0	52.4	0.10	<0.45	3.8	4.4	3.7	<0.21	<0.053	73.2
SEP02-FL@2.5'	08/05/2025	2.5	2.6	71.3	0.093	<0.48	4.1	5.7	4.8	<0.24	<0.059	20.5
SEP02-DL@2.5'	08/05/2025	2.5	2.5	58.5	0.12	<0.46	3.9	4.9	4.2	<0.22	<0.056	15.8
PWV01-B@4'	08/05/2025	4	3.1	83.9	0.15	<0.47	4.7	5.5	4.5	<0.22	<0.056	17.1
PWV01-N@2.5'	08/05/2025	2.5	2.4	42.0	0.11	<0.46	5.7	4.9	4.1	<0.23	<0.057	21.7
PWV01-E@2.5'	08/05/2025	2.5	2.2	46.7	0.089	<0.49	4.7	5.8	5.6	<0.22	<0.055	19.0
PWV01-S@2.5'	08/05/2025	2.5	2.8	31.0	0.071	<0.48	4.0	4.9	4.0	<0.24	<0.059	15.2
PWV01-W@2.5'	08/05/2025	2.5	2.6	38.2	0.076	<0.47	4.2	4.1	3.9	<0.22	<0.055	20.4
1.25x Maximum Background Concentration			-	-	-	-	-	-	-	-	-	-

- Bold** faced values exceed the ECMC Table 915-1 limit(s), but are within 1.25x background concentrations.
- Red** faced values exceed the ECMC Table 915-1 limit(s) and native background concentrations.
- Red & blue highlighted soil analytical values indicate an exceedance of the referenced soil screening level (SSL).
- Reporting limit used for 1.25 multiplier when all background results for a specific metal are non-detect.
- * Indicates laboratory minimum detection limit in excess of SSL.
- Compound falls within the ECMC Table 915-1 footnote 9.

ECMC = Energy & Carbon Management Commission

(<) = Analytical result is less than the indicated laboratory reporting limit.

mg/kg = Milligrams per kilogram

ft. = Feet

bgs = Below ground surface

Source material characterization sample, excavated and transported off site for disposal.

Material excavated and transported off site for disposal.



TANK BATTERY DECOMMISSIONING FORM

CLIENT: Noble Energy		SITE NAME: SESE 36-7N-64W State Tholen TB Loc					DATE: 8/5/2025	REM. PROJECT #: 40315	WEATHER: Sunny, 85°	
SITE DIRECTIONS: CR74 & CR61, 0.1 N, W into							JOB#: 10668			
LEGALS AND LAT/LONG: 40.5241, -104.489512							TASMAN PERSONNEL: E. Card			
SOIL TYPES: Well Graded Sand - SW							SURFACE GRADIENT: Southwest			
SOIL SAMPLING							FACILITY INFRASTRUCTURE			
Date/Time	Soil Sample ID	PID (ppm)	Visual	Olfactory	Photo?	Grab or Lab Sample?	EQUIPMENT	Quantity		
08-05-2025 11:15	AST01@0-6"	0.0	No Staining	No Odor	Yes	Lab	Above Ground Storage Tank (AST)	2	✓	
08-05-2025 11:18	AST02@0-6"	0.0	No Staining	No Odor	Yes	Lab	Buried or Partially Buried Vessel	1	✓	
08-05-2025 11:18	AST02@0-6"	0.0	No Staining	No Odor	Yes	Lab	Separator	2	✓	
08-05-2025 12:45	SEP01-FL@2.5'	1.2	No Staining	No Odor	Yes	Lab	Emission Control Device (ECD)	2	✓	
08-05-2025 12:48	SEP01-DL@2.5'	0.0	No Staining	No Odor	Yes	Lab	Dump Line			
08-05-2025 12:53	SEP02-FL@2.5'	0.0	No Staining	No Odor	Yes	Lab	Wellhead			
08-05-2025 12:56	SEP02-DL@2.5'	0.0	No Staining	No Odor	Yes	Lab	Flowline			
08-05-2025 13:10	PWV01-B@4'	0.8	No Staining	No Odor	Yes	Lab	Other: Meterhouse	1	✓	
08-05-2025 13:12	PWV01-N@2.5'	0.0	No Staining	No Odor	Yes	Lab	Soil Loads Removed			
08-05-2025 13:15	PWV01-E@2.5'	0.0	No Staining	No Odor	Yes	Lab	IMPACTED SOIL IDENTIFIED?			
08-05-2025 13:18	PWV01-S@2.5'	0.0	No Staining	No Odor	Yes	Lab	ESTIMATED VOLUME OF IMPACTS:			
08-05-2025 13:21	PWV01-W@2.5'	0.0	No Staining	No Odor	Yes	Lab	Date	Number	CY	
08-05-2025 11:00	FLARE01@0-6"	0.0	No Staining	No Odor	Yes	Grab				
08-05-2025 11:04	FLARE02@0-6"	0.0	No Staining	No Odor	Yes	Grab				
08-05-2025 10:56	MH01@0-6"	0.1	No Staining	No Odor	Yes	Grab				
							Total Removed	0	0	
							Disposal Facility:			
							Groundwater Recovery			
							DATE GW ENCOUNTERED:		DEPTH:	
							GROUNDWATER IN CONTACT WITH IMPACTED SOIL?			
							LNAPL OR SHEEN OBSERVED ON GW?			
GROUNDWATER SAMPLING							Date	BBLs		
Date/Time	Groundwater Sample ID	Depth Collected	Turbid?	Sheen?	Odor?	Photo?				
							Total Removed	0		
							Disposal Facility:			

Chevron Rockies Business Unit

Field Qualitative Criteria for ECMC Reporting Associated with the Discovery of Potentially Impacted Material

If answered **Yes** to any of the questions listed below, this may suggest the presence of potentially impacted materials as outlined in ECMC Rule 912. Out of an abundance of caution, a “Yes” response will be reported to the ECMC within 24 hours after discovery, regardless of laboratory results. **Immediately notify the RBU Remediation Team.** Include a copy of this Field Qualitative Spill Criteria Checklist in the field Report.

Please answer the following questions when on-site:

1. Is there visible petroleum hydrocarbon staining in the soil? No
2. Does the soil sample from the stained area have a petroleum odor? No
3. Is there a petroleum hydrocarbon sheen on the nearby surface water? No
4. Does there appear to be a sheen of the surface of accumulated groundwater or seeps within the excavation indicative of petroleum? No
5. Is stained soil in contact with groundwater? No

Please Include relevant photos of the site conditions for items 1-5.

Location name: SESE 36-7N-64W State Tholen TB Loc

Please Circle Facility Type: Production Facility



Date: 8/5/2025

GENERAL OBSERVATION FORM

Site Area/AOC: SESE 36-7N-64W State Tholen TB Loc Client: Noble Energy

Daily Forecast/Weather: Sunny, 85° Personnel: E. Card

Task/Location Description: Tank Battery Decommissioning

Time	Description
10:00	Arrived on site, completed JSA
	SOW is removal of 1 PWV, 2 AST's, 2 Separators, 2 flares, and one Meterhouse
	At base of PWV excavation, observed small amount of water at 4' which is interpreted to be
	saturated soils or top of groundwater. Not enough volume for sample
	North separator was connected to State Tholen 36-44 Rem #: 40317
	Unsure of well connected to Southern separator
	No deviations from initial form approved sampling plan
	No backgrounds were collected today and will need to be collected in the future
15:30	Completed COC and left site
	Site access note - access gate on west side of facility is narrow, needed to access flowline
	E.Hossink 10/29/25 - edited field notes.Changed PWV01-N, E, S,W samples from "On-Hold" to "Lab" status as the PWV
	sidewall samples were all submitted for Table 915-1 analysis.

Need a photo log?



Need another General Observation Form?



Photographic Log





Equipment ID:		Equipment Type:	
Material:	Volume:	Contents:	
Notes/Conditions:			

Equipment ID:		Equipment Type:	
Material:	Volume:	Contents:	
Notes/Conditions:			

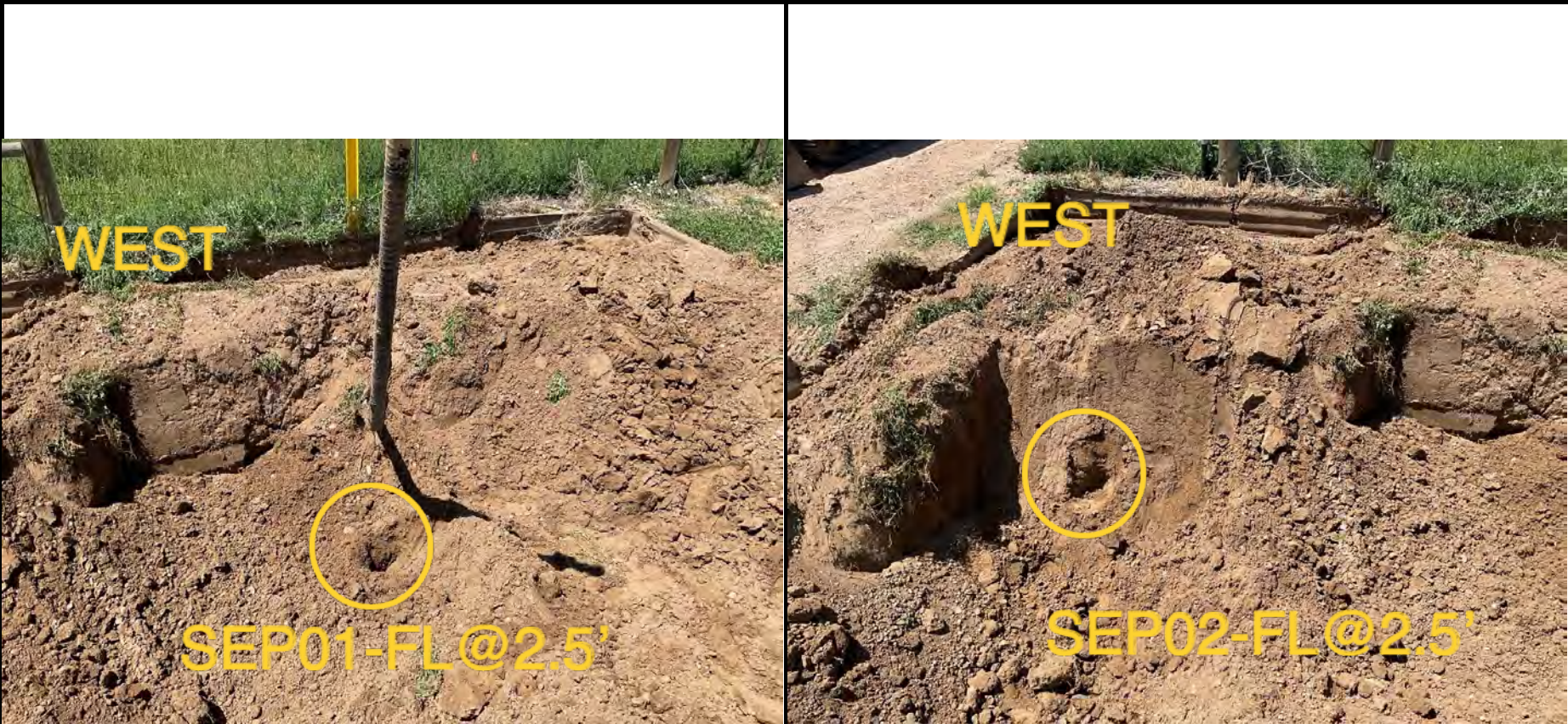


Photographic Log

					
Equipment ID:		Equipment Type:	Equipment ID:		Equipment Type:
Material:	Volume:	Contents:	Material:	Volume:	Contents:
Notes/Conditions:			Notes/Conditions:		



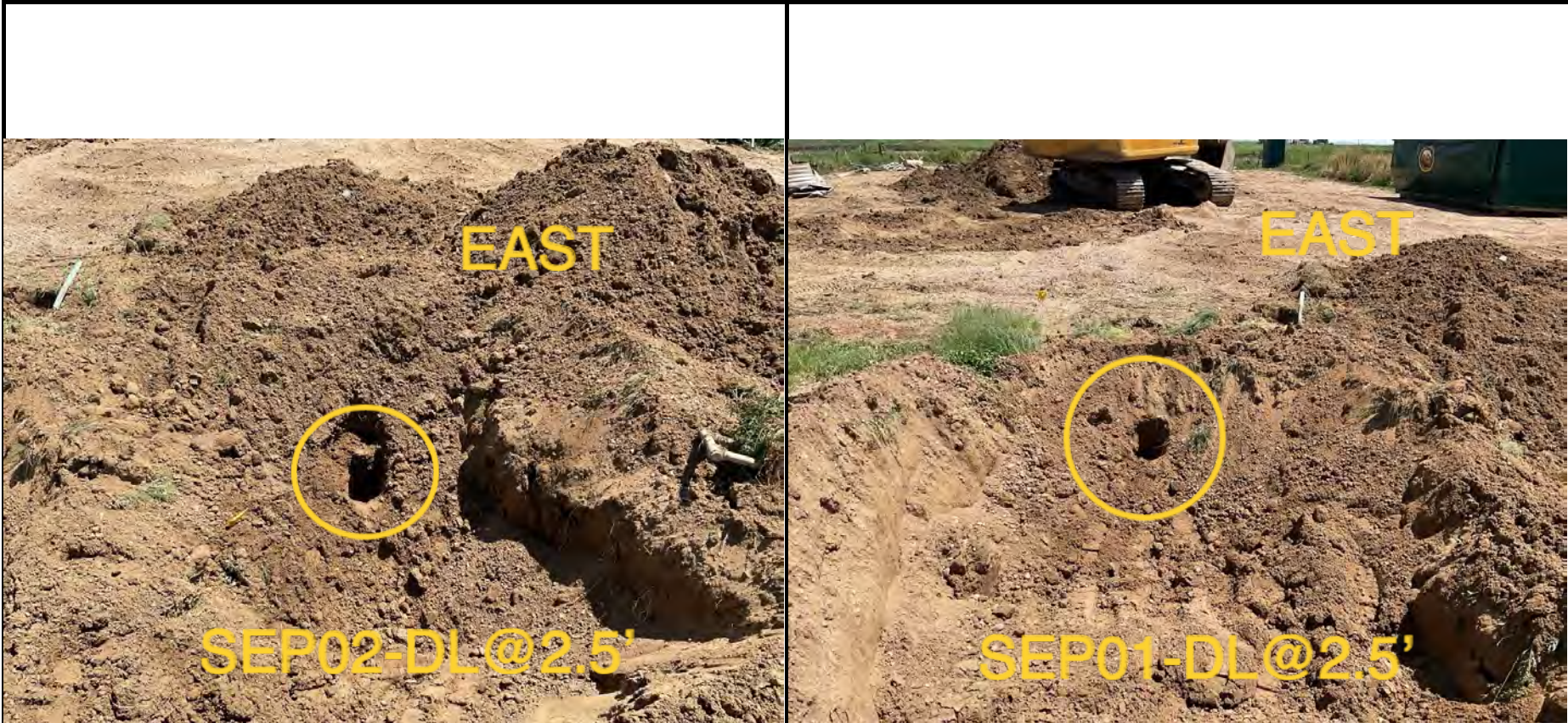
Photographic Log



Equipment ID:		Equipment Type:		Equipment ID:		Equipment Type:	
Material:	Volume:	Contents:		Material:	Volume:	Contents:	
Notes/Conditions:				Notes/Conditions:			



Photographic Log



--	--	--	--	--	--

Equipment ID:		Equipment Type:		Equipment ID:		Equipment Type:	
Material:	Volume:	Contents:		Material:	Volume:	Contents:	
Notes/Conditions:				Notes/Conditions:			



Photographic Log



--	--

Equipment ID:		Equipment Type:		Equipment ID:		Equipment Type:	
Material:	Volume:	Contents:		Material:	Volume:	Contents:	
Notes/Conditions:				Notes/Conditions:			



CLIENT: Noble Energy		SITE NAME: SESE 36-7N-64W State Tholen TB Loc					DATE: 8/4/2025	REM. PROJECT #: 40315	WEATHER: 80s, sunny	
SITE DIRECTIONS: WC RD 64/ WC RD 71 N 400 ft, E into							JOB#: 10668			
LEGALS AND LAT/LONG: 40.52412, -104.489305							TASMAN PERSONNEL: EG			
SOIL TYPES: Well Graded Sand - SW							SURFACE GRADIENT: South			
SOIL SAMPLING							FACILITY INFRASTRUCTURE			
Date/Time	Soil Sample ID	PID (ppm)	Visual	Olfactory	Photo?	Grab or Lab Sample?	EQUIPMENT		Quantity	
							Above Ground Storage Tank (AST)			
08-04-2025 11:45	FS01@4'	0.0	No Staining	No Odor	Yes	Lab	Buried or Partially Buried Vessel		1	
08-04-2025 11:50	SS01@3'	2.2	No Staining	No Odor	Yes	Lab	Separator			
08-04-2025 11:55	SS02@3'	0.1	No Staining	No Odor	Yes	Lab	Emission Control Device (ECD)			
08-04-2025 12:00	SS03@3'	0.0	No Staining	No Odor	Yes	Lab	Dump Line			
08-04-2025 12:05	SS04@3'	0.0	No Staining	No Odor	Yes	Lab	Wellhead			
							Flowline			
							Other:			
							Soil Loads Removed			
							IMPACTED SOIL IDENTIFIED? No			
							ESTIMATED VOLUME OF IMPACTS:			
							Date	Number	CY	
							Total Removed		0 0	
							Disposal Facility:			
							Groundwater Recovery			
							DATE GW ENCOUNTERED:		DEPTH:	
							GROUNDWATER IN CONTACT WITH IMPACTED SOIL?			
							LNAPL OR SHEEN OBSERVED ON GW?			
GROUNDWATER SAMPLING							Date	BBLs		
Date/Time	Groundwater Sample ID	Depth Collected	Turbid?	Sheen?	Odor?	Photo?				
							Total Removed		0	
							Disposal Facility:			

Chevron Rockies Business Unit

Field Qualitative Criteria for ECMC Reporting Associated with the Discovery of Potentially Impacted Material

If answered **Yes** to any of the questions listed below, this may suggest the presence of potentially impacted materials as outlined in ECMC Rule 912. Out of an abundance of caution, a “Yes” response will be reported to the ECMC within 24 hours after discovery, regardless of laboratory results. **Immediately notify the RBU Remediation Team.** Include a copy of this Field Qualitative Spill Criteria Checklist in the field Report.

Please answer the following questions when on-site:

1. Is there visible petroleum hydrocarbon staining in the soil? No_____
2. Does the soil sample from the stained area have a petroleum odor? No_____
3. Is there a petroleum hydrocarbon sheen on the nearby surface water? No_____
4. Does there appear to be a sheen of the surface of accumulated groundwater or seeps within the excavation indicative of petroleum? No_____
5. Is stained soil in contact with groundwater? No_____

Please Include relevant photos of the site conditions for items 1-5.

Location name: SESE 36-7N-64W State Tholen TB Loc

Please Circle Facility Type: Other_____



Photographic Log



Equipment ID: FS01 @4'		Equipment Type:		Equipment ID: SS01 @3'		Equipment Type:	
Material:	Volume:	Contents:		Material:	Volume:	Contents:	
Notes/Conditions: Base sample				Notes/Conditions: South sidewall sample			



Photographic Log



Equipment ID: SS02@3'		Equipment Type:	
Material:	Volume:	Contents:	
Notes/Conditions: East sidewall sample			

Equipment ID: SS03@3'		Equipment Type:	
Material:	Volume:	Contents:	
Notes/Conditions: North sidewall sample			



Photographic Log



Equipment ID: SS04@3'		Equipment Type:		Equipment ID:		Equipment Type:	
Material:		Volume:		Material:		Volume:	
Contents:				Contents:			
Notes/Conditions: West sidewall sample				Notes/Conditions:			