


WELL NAME: APACHE CANYON 26-01, API #: 071-06134, INSP. # 7163016




OGRIS
OPERATING, LLC

719-497-0446

WDID 1912154 or 911
PERMIT 74004

APACHE CANYON 26-01
NE/NE 26-34S-68W
NAD 83
Lat. 37.061086
Long. 104.958102

Network: Nov 4, 2025 at 1:33:38 PM MST
Local: Nov 4, 2025 at 1:33:38 PM MST
+37.061223,-104.958096
Las Animas County
Altitude:2381.7meter
Speed:0.3km/h

PHOTO 1: WELL SIGN/ API # NEEDS TO BE POSTED PER RULE 605.



Network: Nov 4, 2025 at 1:33:09 PM MST
Local: Nov 4, 2025 at 1:33:09 PM MST
+37.061022,-104.958397
Las Animas County
Altitude:2382.0meters
Speed:0.0km/h

PHOTO 2: LOCATION.



PHOTO 3: TRASH OFF THE NORTH END OF LOCATION. REMOVE ALL TRASH FROM LOCATION PER RULE 606. CA DATE 11-14-2025.



Network: Nov 4, 2025 at 1:35:50 PM MST
Local: Nov 4, 2025 at 1:35:50 PM MST
+37.061287,-104.957987
Las Animas County
Altitude:2380.3meters
Speed:0.0km/h

PHOTO 4: MORE TRASH.



Network: Nov 4, 2025 at 1:36:11 PM MST
Local: Nov 4, 2025 at 1:36:11 PM MST
+37.061287,-104.957987
Las Animas County
Altitude:2380.6meters
Speed:2.5km/h

PHOTO 5: MORE TRASH.

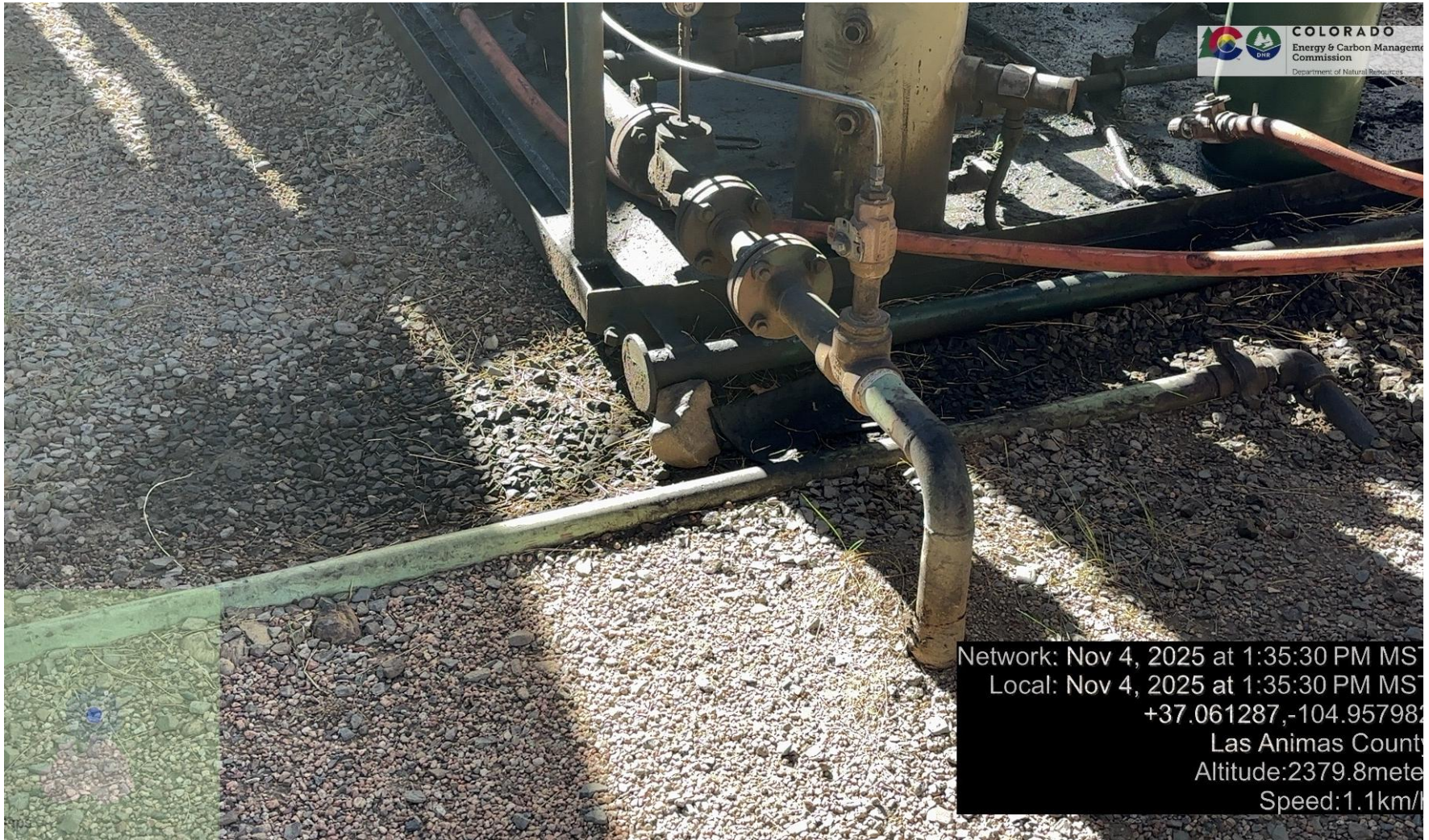


PHOTO 6: AREA OF IMPACTED SOIL ON NORTH AND EAST SIDE OF COMPRESSOR. Conduct maintenance on equipment, cleanup stained material and review self inspection processes. COMPLY WITH RULE 1002,(2).D. CA DATE 11-14-2025.



PHOTO 7: MORE IMPACTED SOIL ON SOUTH SIDE OF COMPRESSOR.