

# Final Reclamation Inspection

August 12th, 2025

Operator: Kerr McGee Oil & Gas Onshore - 47120

Location ID: 329455

Inspection Document #: 714002688

Weld County, CO

Corey Mcdonough  
Reclamation Specialist, ECMC



**COLORADO**

**Energy & Carbon Management  
Commission**

Department of Natural Resources

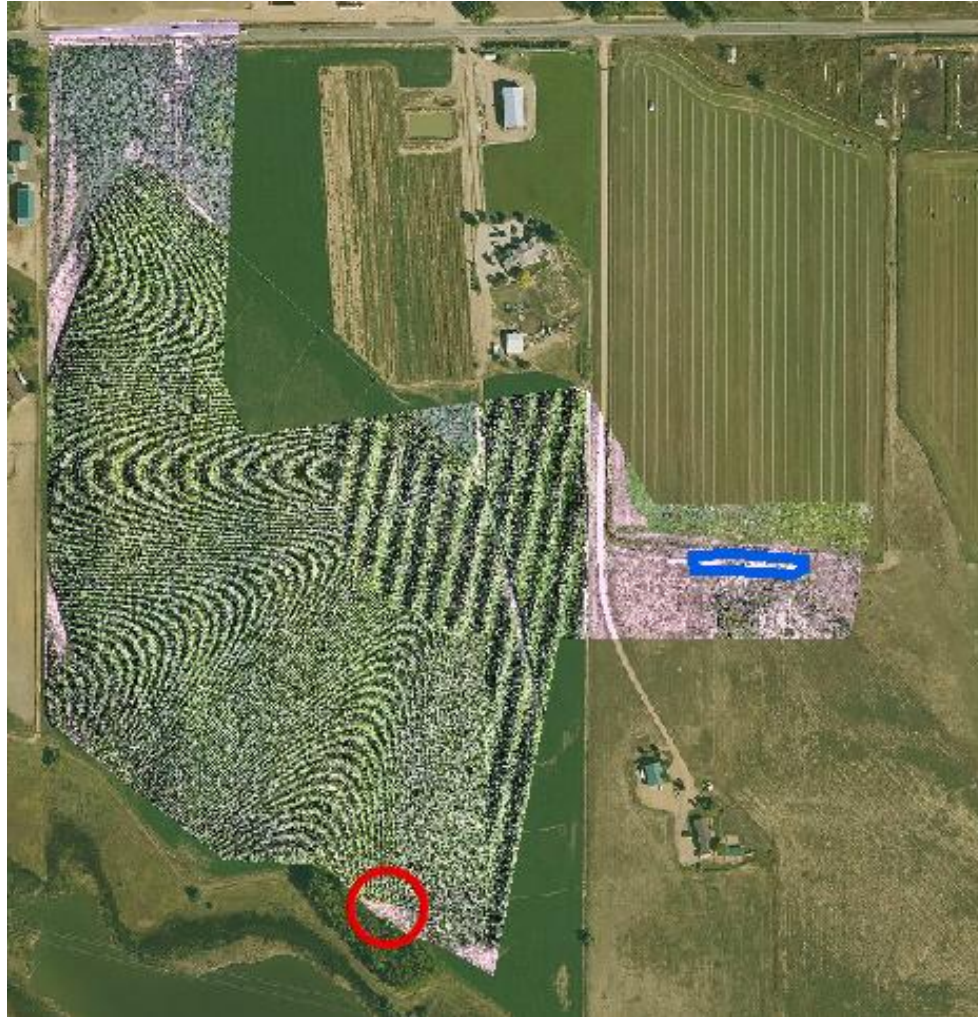
Inspection Photos  
Location Name: LDS T 13-5  
Location ID: 329455



**Photo 1.** NAIP aerial imagery (2019) illustrating the well location (red circle), associated tank battery location (blue polygon), and well and tank battery access roads (black lines). The tank battery is associated with the Temple 22-13 well API #123-18380 under location ID #330089.



Inspection Photos  
Location Name: LDS T 13-5  
Location ID: 329455



**Photo 2.** Orthomosaic (drone) imagery taken 8/12/2025 and NAIP aerial imagery (2023) illustrating the well location (red circle) and associated tank battery (blue polygon).





**Photo 3.** Drone aerial imagery taken at the well location, looking downward (displaying the well). No photo south of the well looking north was taken due to trees blocking the line of sight.

Inspection Photos  
Location Name: LDS T 13-5  
Location ID: 329455



**Photo 4.** Drone aerial imagery taken west of well location, facing east (displaying the well).



Inspection Photos  
Location Name: LDS T 13-5  
Location ID: 329455



**Photo 5.** Drone aerial imagery taken north of well location, facing south (displaying the well and access road).



Inspection Photos  
Location Name: LDS T 13-5  
Location ID: 329455



**Photo 6.** Drone aerial imagery taken east of well location, facing west (displaying the well).





**Photo 7.** Drone aerial imagery east of the well and access road facing west (displaying the well access road and well).



**Photo 8.** Drone aerial imagery south of the access road facing north (displaying the well access road).

Inspection Photos  
Location Name: LDS T 13-5  
Location ID: 329455



**Photo 9.** Drone aerial imagery mid access road facing north (displaying the well access road).  
Note: Crop vegetation at the well pad and access road appears consistent with adjacent reference areas.

