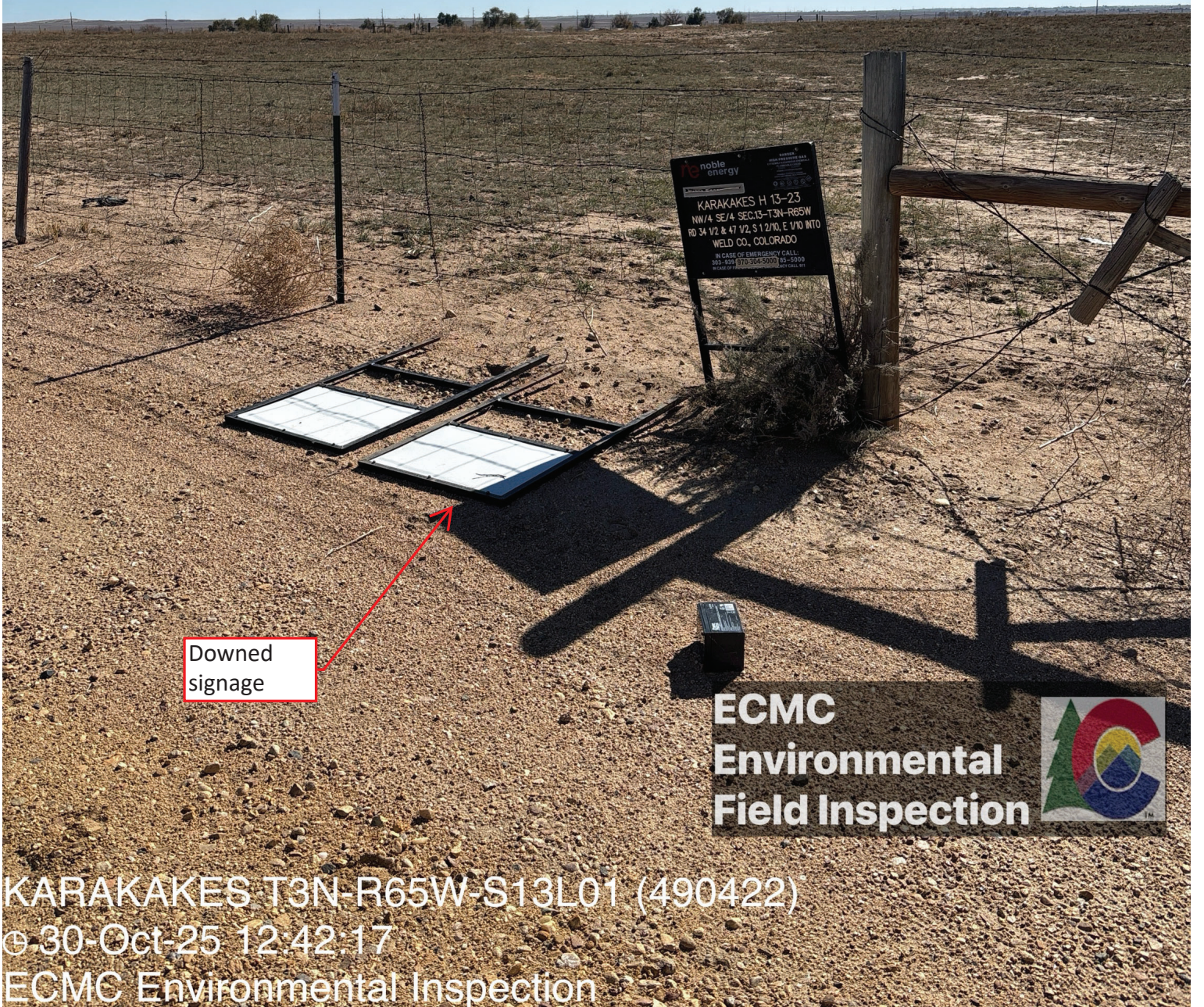


WGS84 $\pm 39\text{ft}$ 40.22300, -104.60877 $\pm 4\text{m}$ 1476 ± 10 S168



Downed signage

ECMC
Environmental
Field Inspection



KARAKAKES T3N-R65W-S13L01 (490422)

© 30-Oct-25 12:42:17

ECMC Environmental Inspection

WGS84
±11ft

40.22285, -104.60859

m
±3m

1477

±10

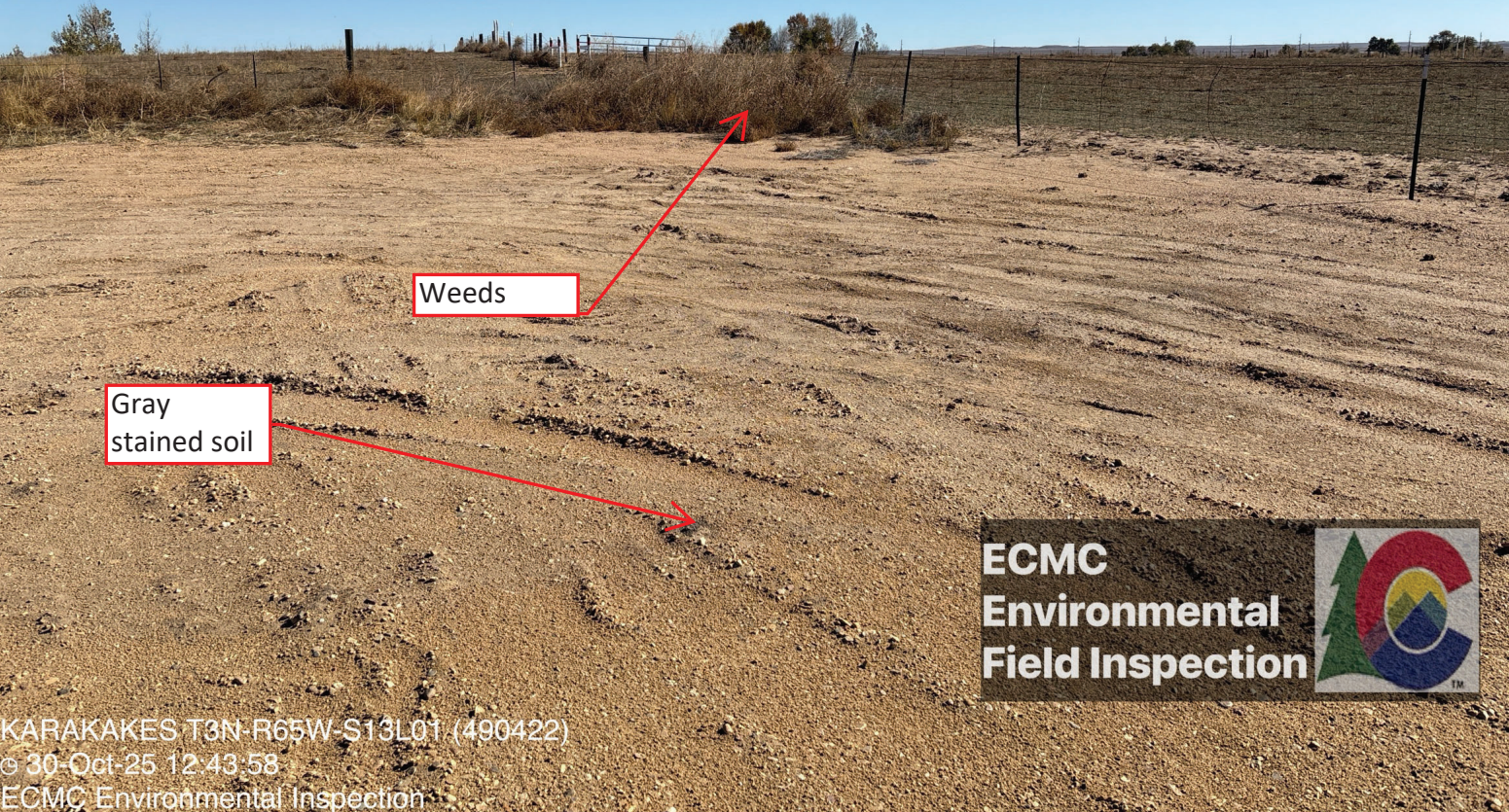
NW333

Gray
stained soil

ECMC
Environmental
Field Inspection



KARAKAKES T3N-R65W-S13L01 (490422)
© 30-Oct-25 12:43:42
ECMC Environmental Inspection



Weeds

Gray
stained soil

**ECMC
Environmental
Field Inspection**



KARAKAKES T3N-R65W-S13L01 (490422)
© 30-Oct-25 12:43:58
ECMC Environmental Inspection

WGS84
±8ft

40.22294, -104.60841

m
±3m

1477

°T
±10

NW295

Stained soil

**ECMC
Environmental
Field Inspection**



KARAKAKES T3N-R65W-S13L01 (490422)
© 30-Oct-25 12:44:49
ECMC Environmental Inspection

WGS84 40.22285, -104.60855 Δ m 1477 ∇ T \pm 15ft \pm 3m \pm 10 NW313

Gray
stained soil

ECMC
Environmental
Field Inspection



KARAKAKES T3N-R65W-S13L01 (490422)

© 30-Oct-25 12:46:47

ECMC Environmental Inspection

WGS84 40.22284, -104.60856 m 1477 SW242
±25ft ±5m ±10

Gray
stained soil

ECMC
Environmental
Field Inspection



KARAKAKES T3N-R65W-S13L01 (490422)

© 30-Oct-25 12:47:01

ECMC Environmental Inspection

WGS84
±26ft

40.22283, -104.60859

m
±6m

1478

°T
±10

NE39



Weeds



Weeds



Gray
stained soil



**ECMC
Environmental
Field Inspection**



KARAKAKES T3N-R65W-S13L01 (490422)
© 30-Oct-25 12:47:14
ECMC Environmental Inspection

WGS84
±12ft

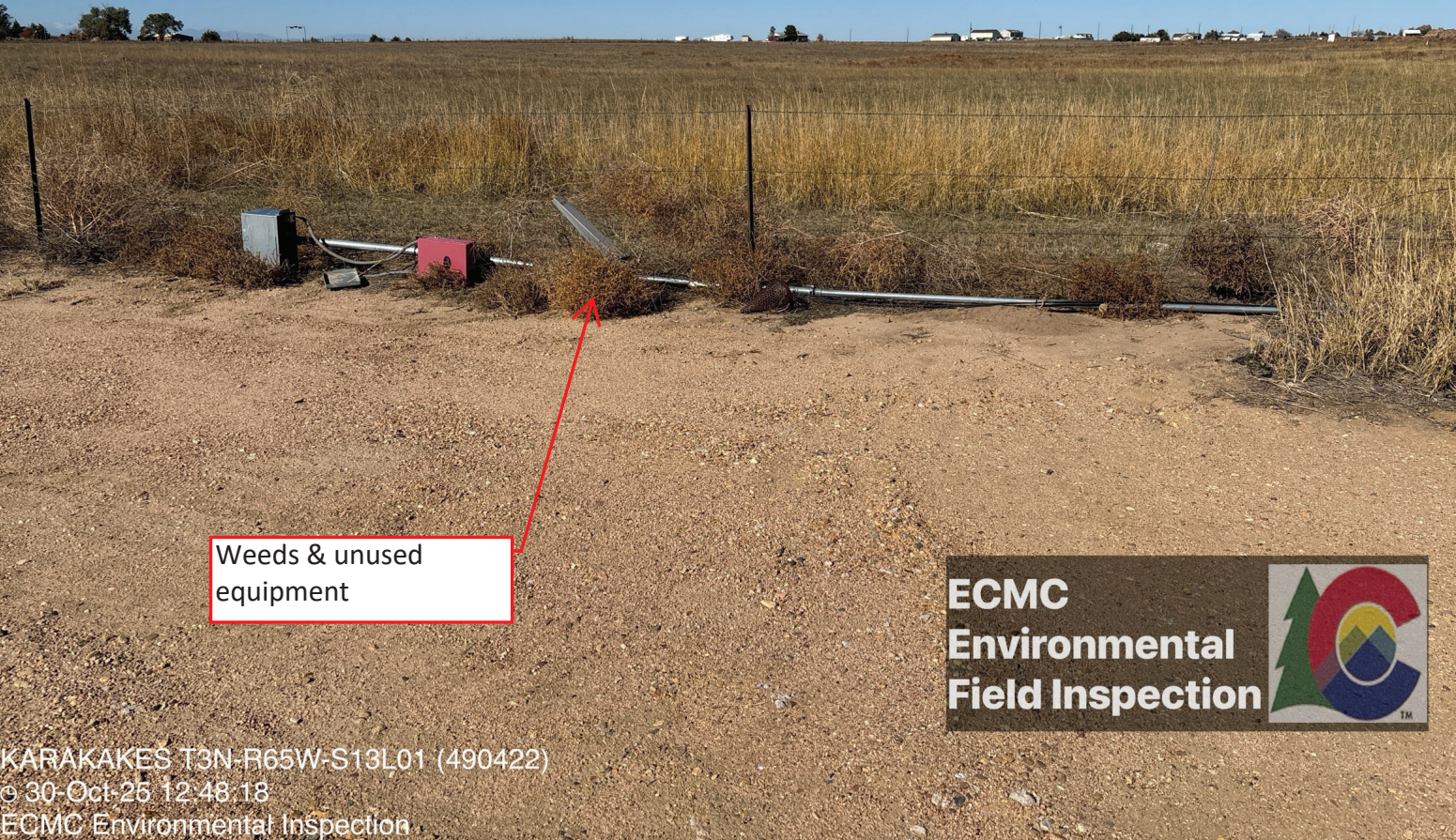
40.22301, -104.60883

m
±3m

1480

°T
±12

NW337



Weeds & unused
equipment

ECMC
Environmental
Field Inspection



KARAKAKES T3N-R65W-S13L01 (490422)
© 30-Oct-25 12:48:18
ECMC Environmental Inspection