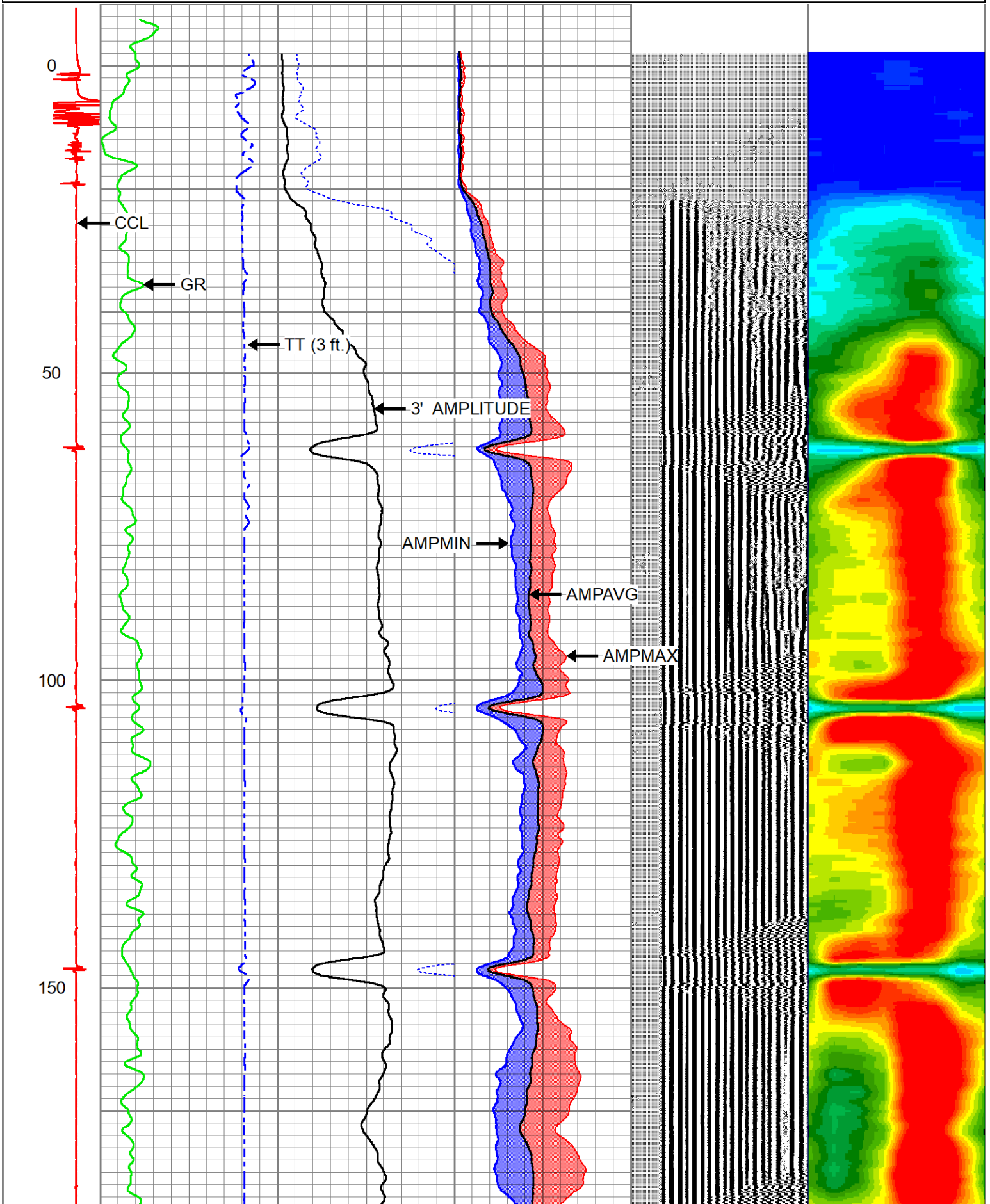


			Centralizers-Sondex PRC 2.75" Roller Centralizers Tekco 2 3/4" Adjustable Centralizer	3.00	2.75	25.00
CCL	0.00					
TCF	0.00					
GRHV	0.94					
GR	0.94					
			DSS_HSR_ELE-DSS_HSR_20_ELE (HSR20 0000) DSS 2 3/4" HSR Bond tool - Electronics Module	4.81	2.75	61.00
ROTV	4.10					
THV	4.10					
INTEMP	4.10					
PNEG	4.10					
PPOS	4.10					
WVFS8	6.09					
WVFS7	6.09					
WVFS6	6.09					
WVFS5	6.09					
WVFS4	6.09					
WVFS3	6.09		DSS_HSR_SND-DSS_HSR_20_SND (HSR20 0000) DSS 2 3/4" HSR Bond tool - Sonde Module	7.70	2.75	86.00
WVFS1	6.09					
WVFCAL	6.59					
WVF3FT	6.59					
WVF5FT	7.59					
TEMP	11.67					
WVFSYNC	11.80					
			Centralizers-Sondex PRC 2.75" Roller Centralizers Tekco 2 3/4" Adjustable Centralizer	3.00	2.75	25.00

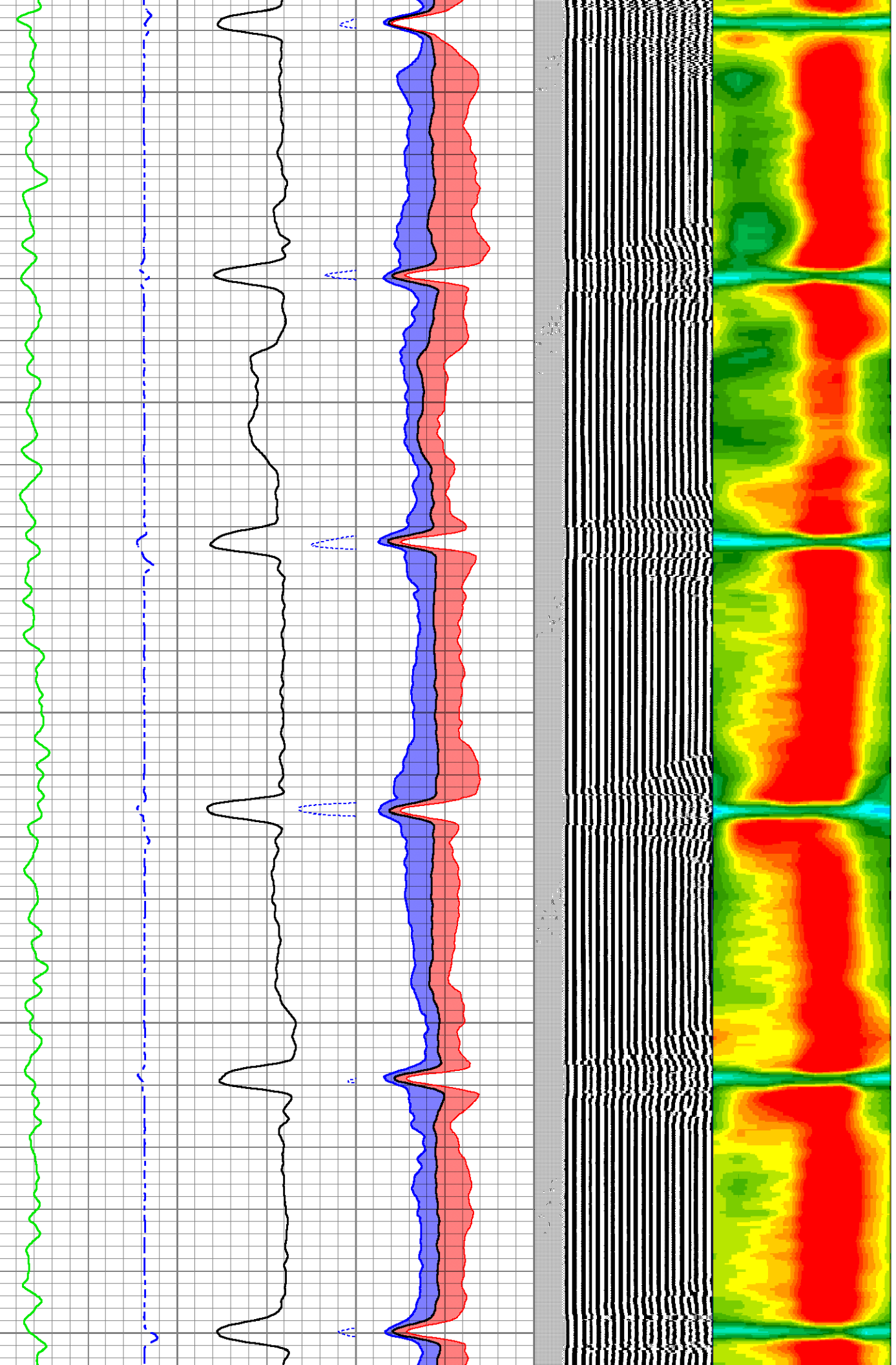
Dataset: cvx-resolute e 25-63-hc.db: WATTENBERG-90750/RESOLUTE_E_25-63-HC/DSSHSR20-003/RBL.2
 Total length: 19.52 ft
 Total weight: 200.31 lb
 O.D.: 2.75 in

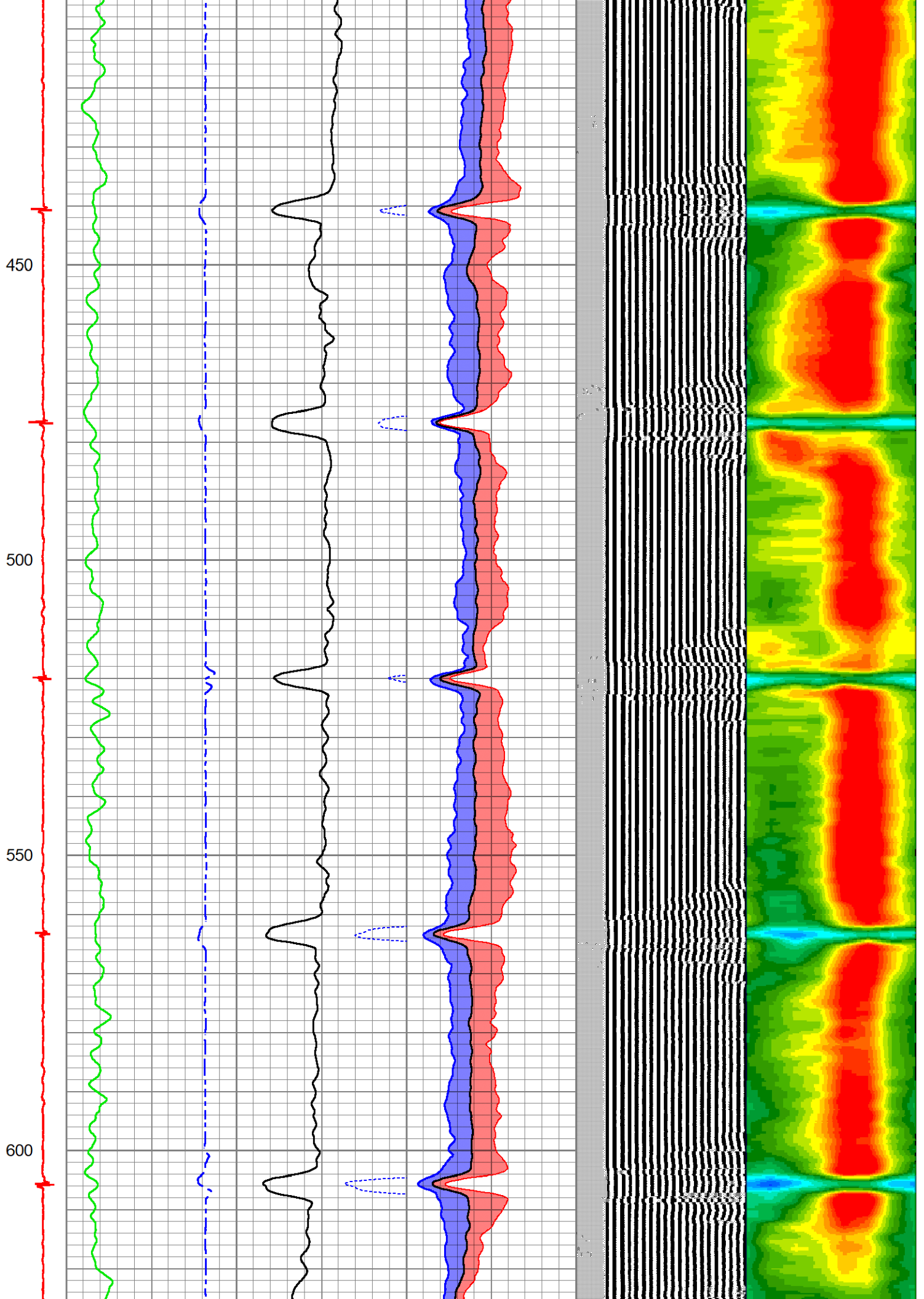
Database File cvx-resolute e 25-63-hc.db
 Dataset Pathname WATTENBERG-90750/RESOLUTE_E_25-63-HC/DSSHSR20-003/RBL.2
 Presentation Format ranger_dss_radial
 Dataset Creation Thu Sep 11 14:14:42 2025
 Charted by Depth in Foot scaled 1:240

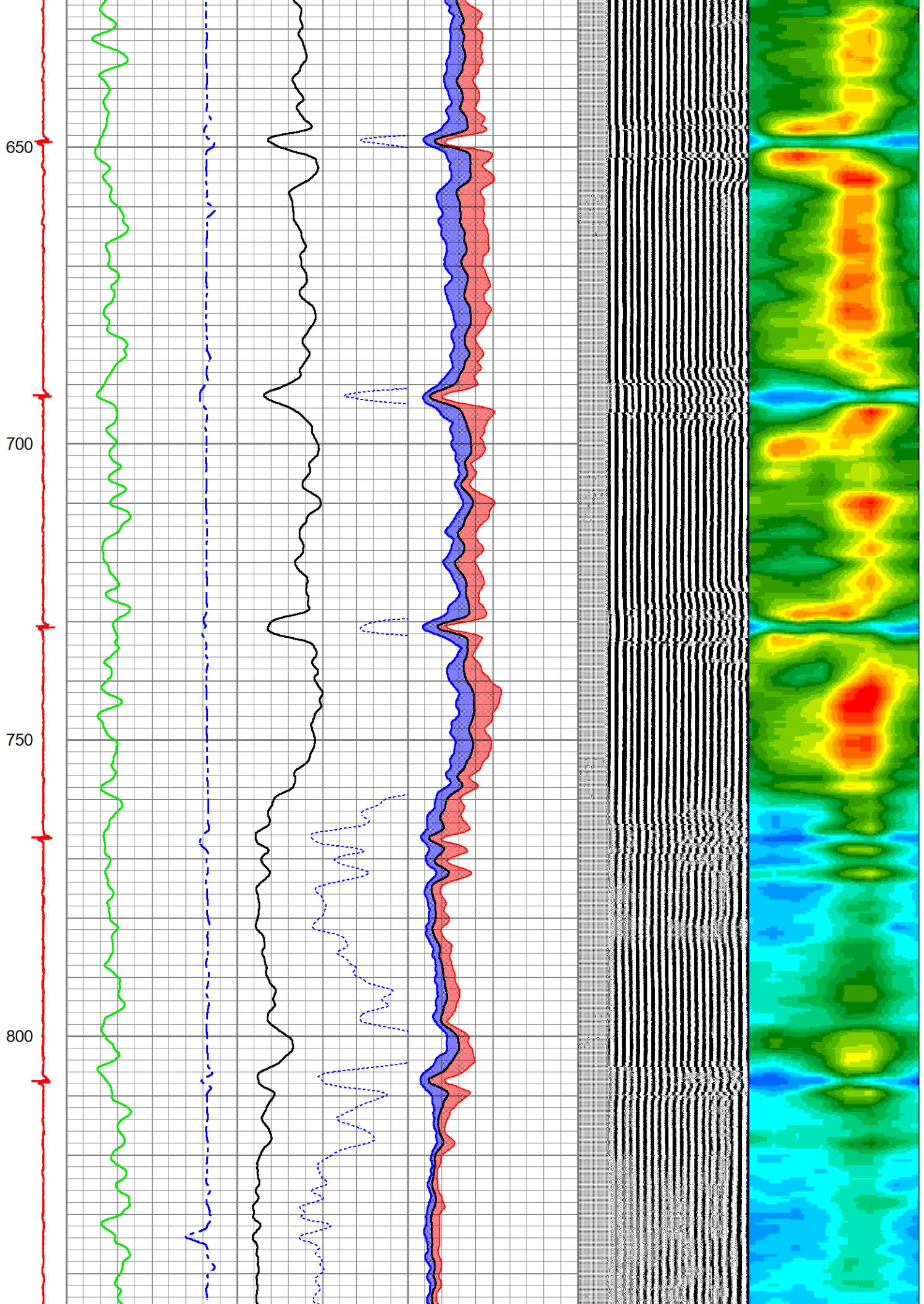
CCL	TT (3 ft.)		3' AMPLITUDE		0	AMPMIN	100	VDL (5 ft.)		1	RADIAL MAP	7
-120019000	380	(usec) 225	0	(mV) 100	0	AMPAVG	100	200	(usec) 1200	4		50
	0	GR (GAPI) 150	3' Amplitude x5		0	AMPMAX	100					
			0	(mV) 25								



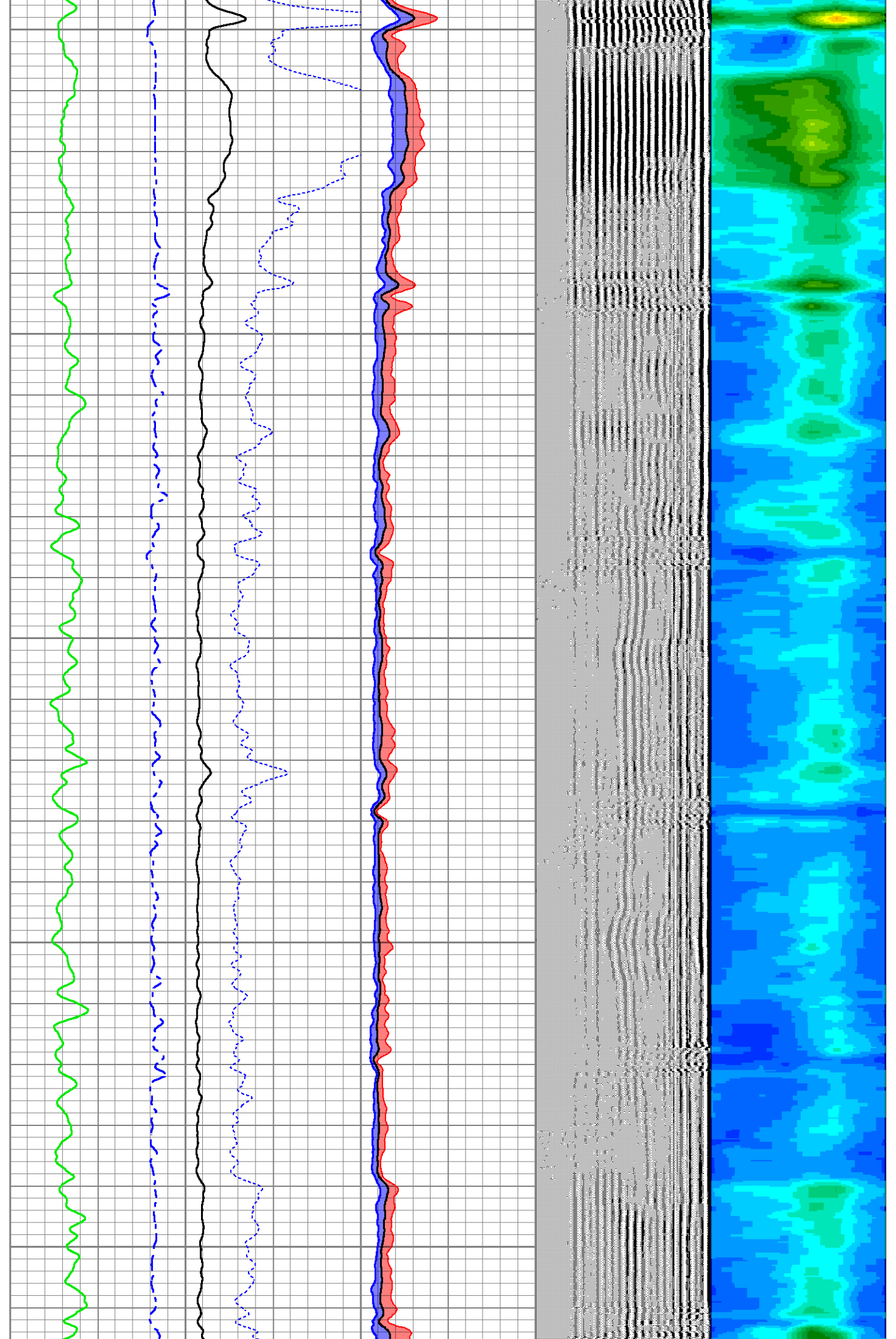
200
250
300
350
400







850
900
950
1000
1050

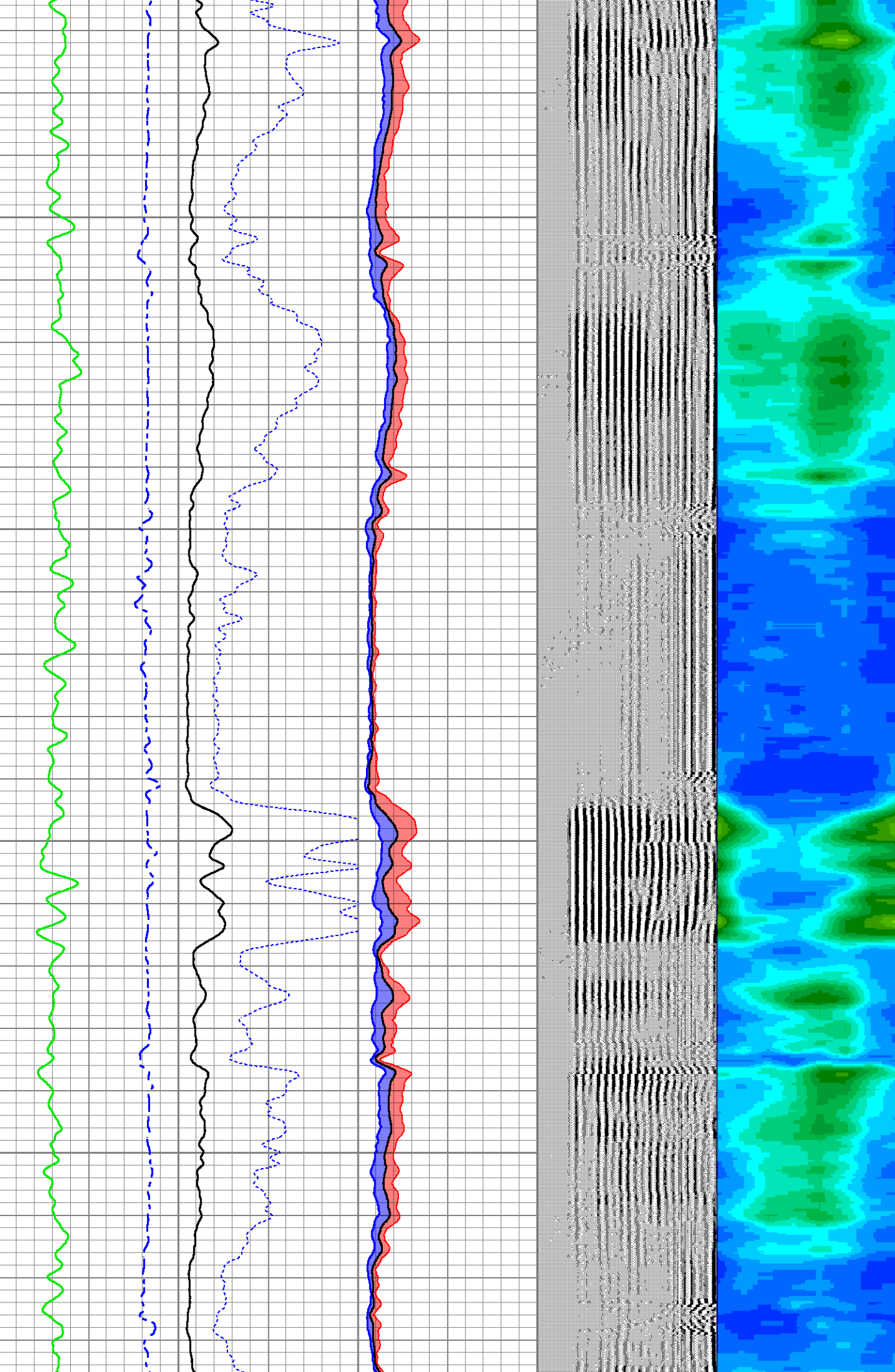


1100

1150

1200

1250



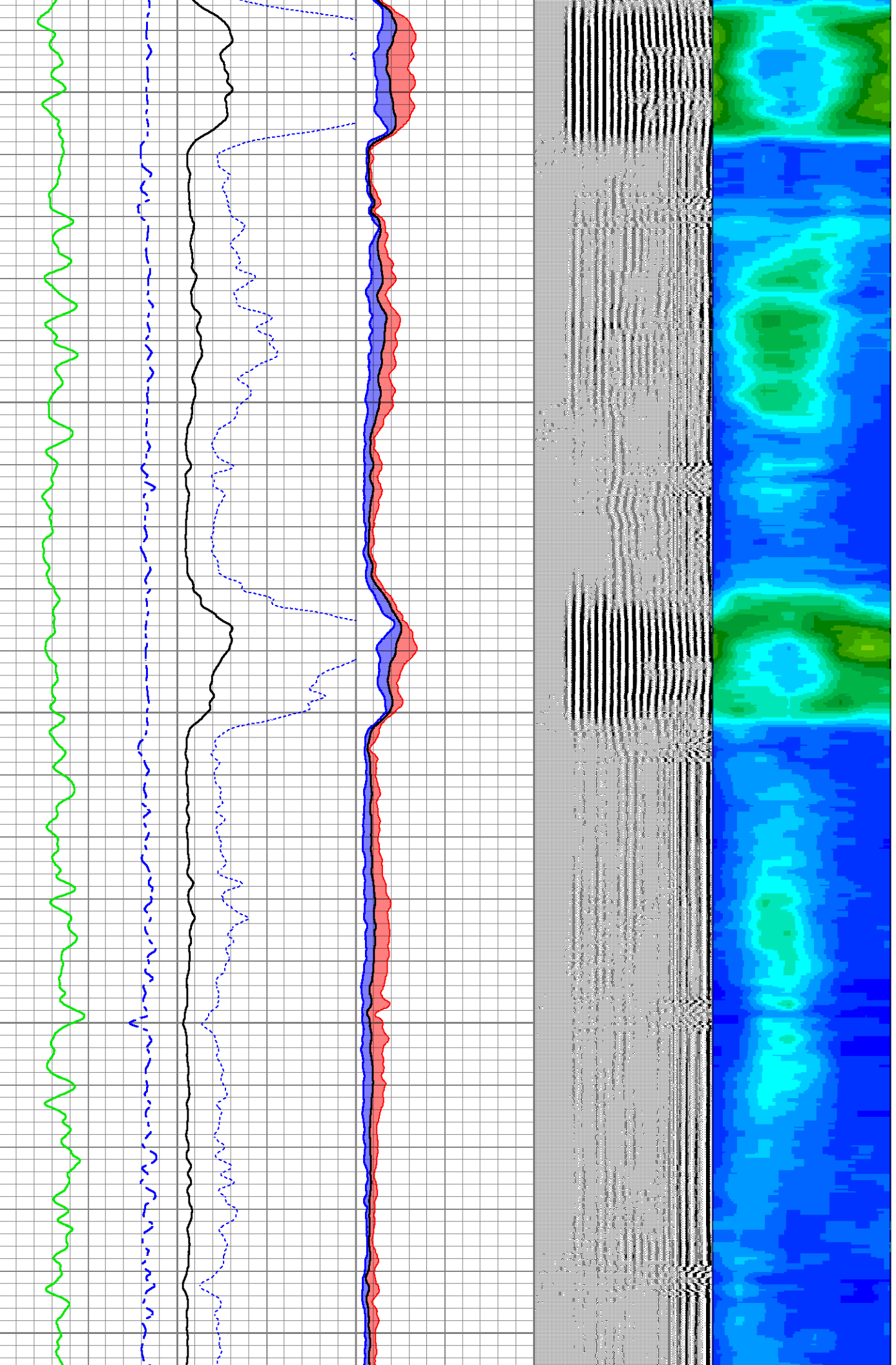
1300

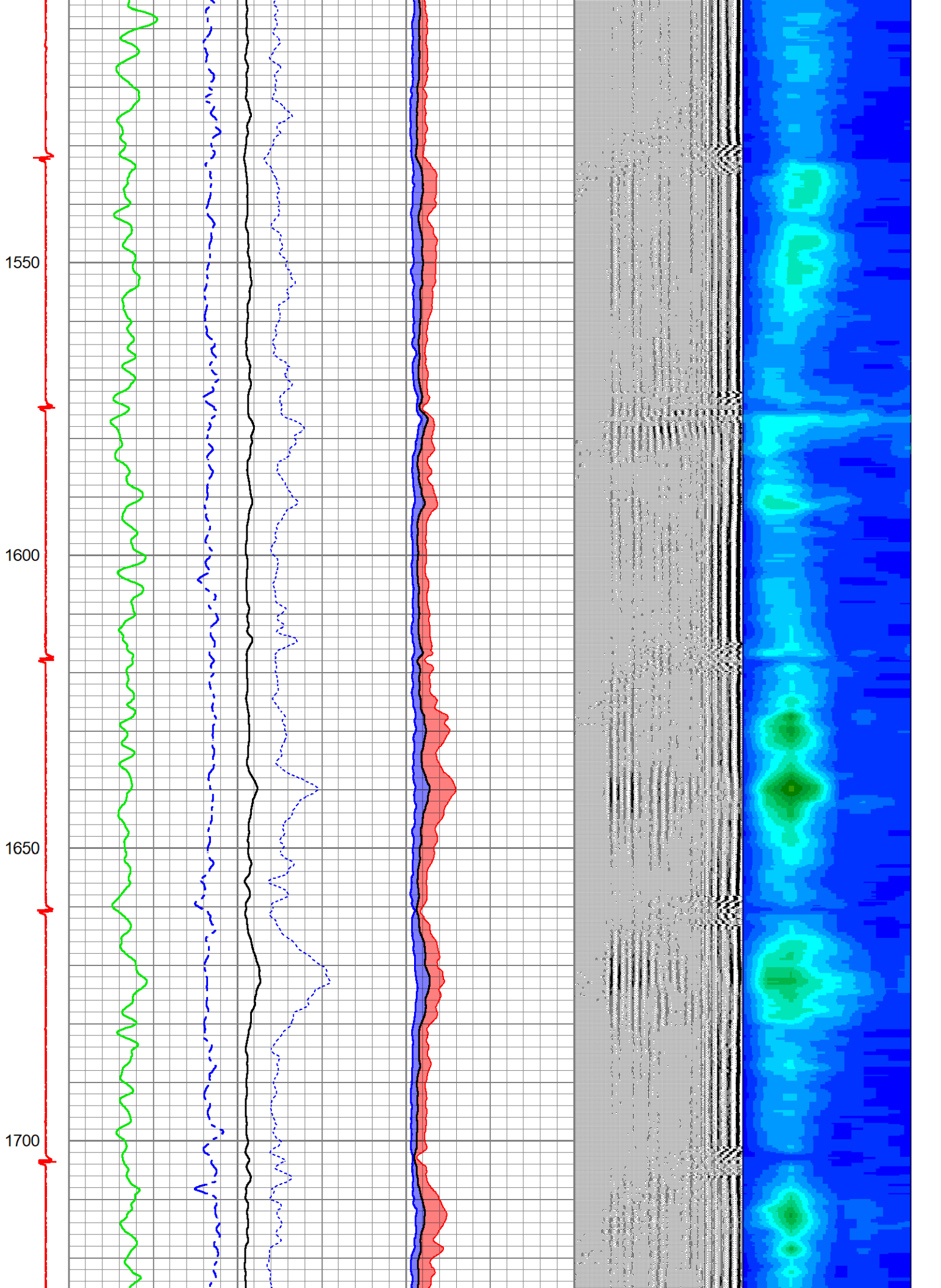
1350

1400

1450

1500



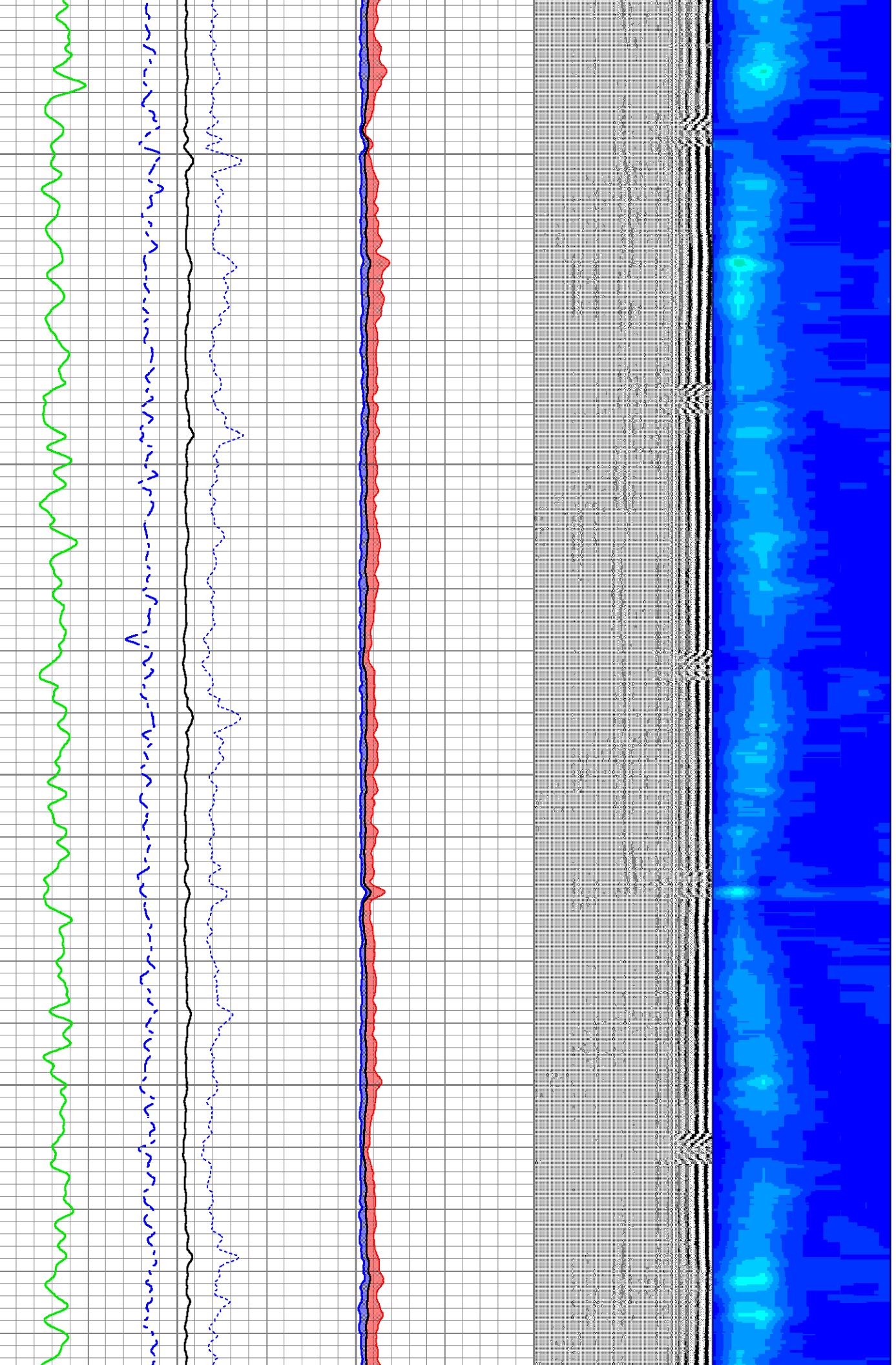


1750

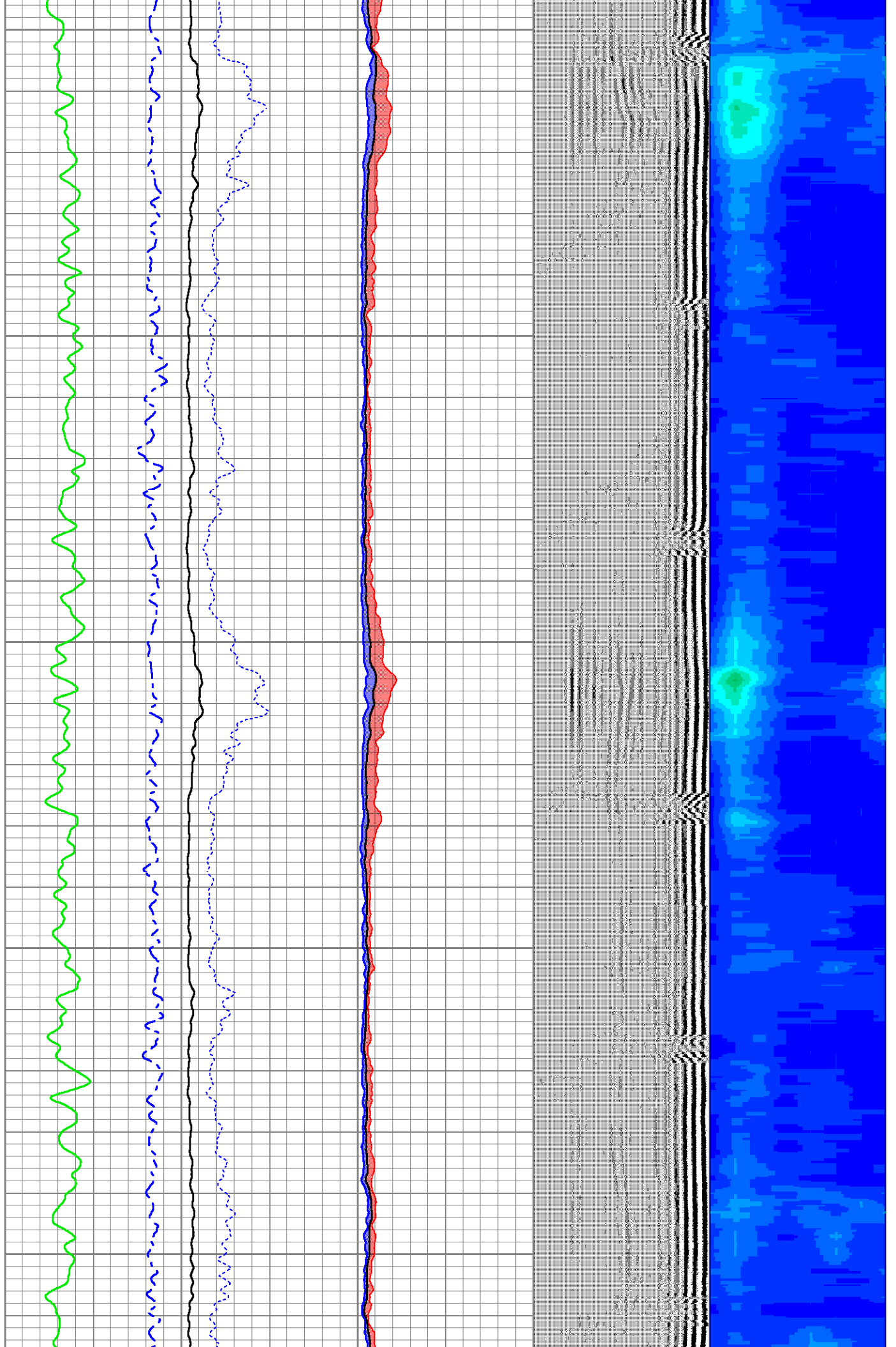
1800

1850

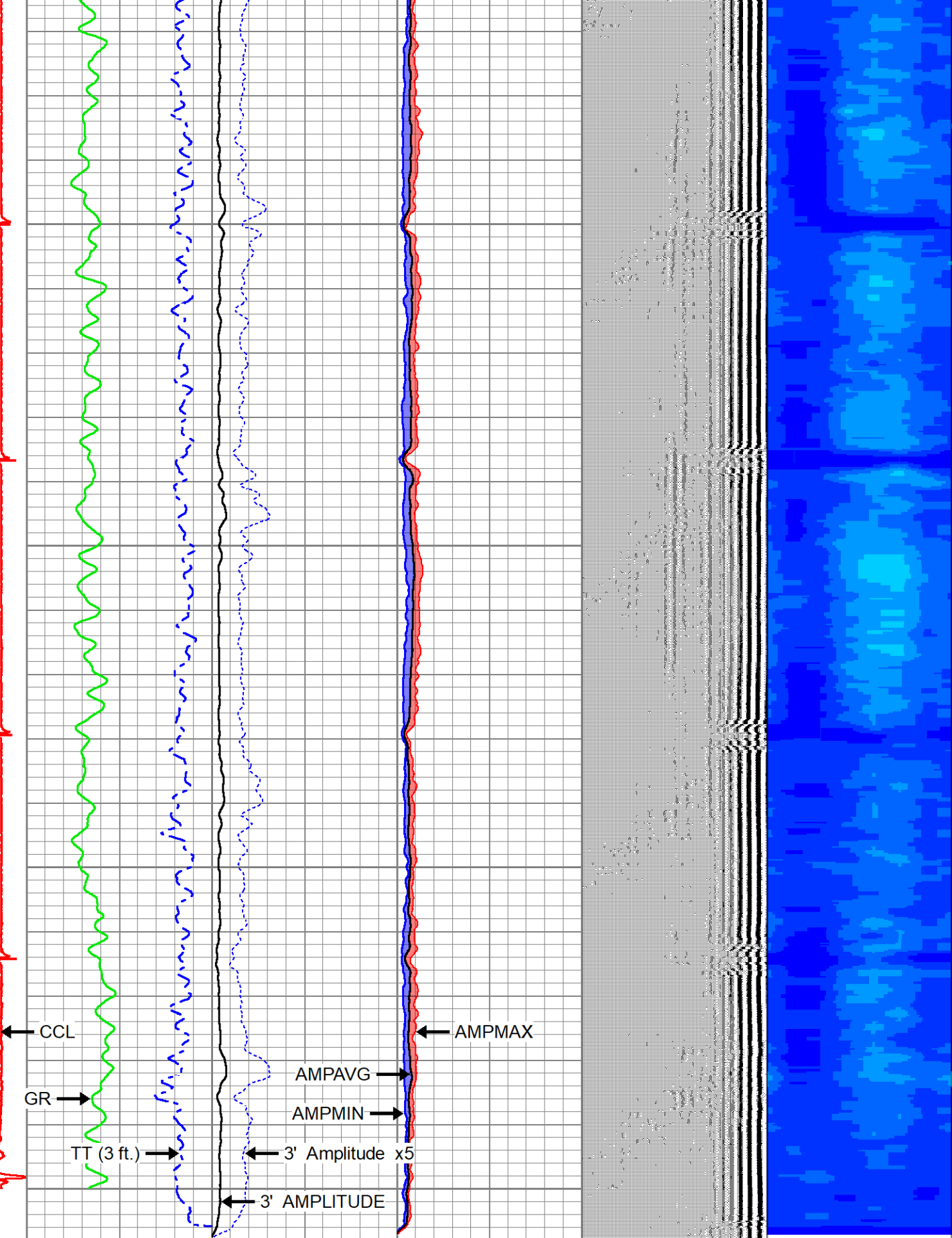
1900



1950
2000
2050
2100
2150



2200
2250
2300
2350



← CCL
GR →
TT (3 ft.) →
← AMPMAX
AMPVAVG →
AMPMIN →
← 3' Amplitude x5
← 3' AMPLITUDE

CCL	TT (3 ft.)	3' AMPLITUDE	0	AMPMIN	100	VDL (5 ft.)	1	RADIAL MAP	7
-120019000	380 (usec)	225 0 (mV) 100	0	AMPVAVG	100	200 (usec) 1200	4		50
	0 GR (GAPI) 150	3' Amplitude x5	0	AMPMAX	100				
		0 (mV) 25							



Company	CHEVRON	
Well	RESOLUTE E 25-63HC	
Field	WATTENBERG - 90750	
County	WELD	
State	COLORADO	Country U.S.A.