



CONSERVATION COMMISSION  
OF NATURAL RESOURCES  
STATE OF COLORADO

File in triplicate for Patented and Federal lands.  
File in quadruplicate for State lands.

RECEIVED  
SEP 22 1976

5. LEASE DESIGNATION AND SERIAL NO.  
COLO. OIL & GAS CONS. COMM.

6. IF INDIAN, ALLOTTEE OR TRIBE NAME

7. UNIT AGREEMENT NAME

8. FARM OR LEASE NAME

Geesen

9. WELL NO.

3

10. FIELD AND POOL, OR WILDCAT

Sunup

11. SEC., T., R., M., OR BLOCK AND SURVEY OR AREA

21-T3S-R52W

12. COUNTY

Washington

13. STATE

Colorado

WELL COMPLETION OR RECOMPLETION REPORT AND LOG

1a. TYPE OF WELL: OIL WELL  GAS WELL  DRY  Other \_\_\_\_\_

b. TYPE OF COMPLETION: NEW WELL  WORK OVER  DEEP-EN  PLUG BACK  DIFF. RESVR.  Other \_\_\_\_\_

2. NAME OF OPERATOR  
Bobcat Oil Company and Sulpetro International, Ltd.

3. ADDRESS OF OPERATOR  
450 Denver Club Building, Denver, Colorado 80202

4. LOCATION OF WELL (Report location clearly and in accordance with any State requirements)  
At surface 600' FNL & 810' FEL (NE NE) Section 21.  
At top prod. interval reported below Same  
At total depth Same

14. PERMIT NO. 76-829 DATE ISSUED 9/1/76

15. DATE SPUDDED 9/7/76 16. DATE T.D. REACHED 9/10/76 17. DATE COMPL. (Ready to prod. or Plug & Abd.) 9/11/76 18. ELEVATIONS (DF, RKB, RT, GR, ETC.) 4818' GL - 4826' KB 19. ELEV. CASINGHEAD -

20. TOTAL DEPTH, MD & TVD 4440' KB 21. PLUG, BACK T.D., MD & TVD - 22. IF MULTIPLE COMPL., HOW MANY - 23. INTERVALS DRILLED BY - ROTARY TOOLS 0 - 4440' CABLE TOOLS -

24. PRODUCING INTERVAL(S), OF THIS COMPLETION—TOP, BOTTOM, NAME (MD AND TVD) D&A 25. WAS DIRECTIONAL SURVEY MADE No

26. TYPE ELECTRIC AND OTHER LOGS RUN Schlumberger IES & FDC 27. WAS WELL CORED YES  NO  (Submit analysis) DRILL STEM TEST YES  NO  (See reverse side)

28. CASING RECORD (Report all strings set in well)

CASING SIZE	WEIGHT, LB./FT.	DEPTH SET (MD)	HOLE SIZE	CEMENTING RECORD	AMOUNT PULLED
8-5/8" OD	24#	136' KB	12 1/4"	100 sx, circ. to surf.	None

29. LINER RECORD

SIZE	TOP (MD)	BOTTOM (MD)	SACKS CEMENT	SCREEN (MD)
		D&A		

30. TUBING RECORD

SIZE	DEPTH SET (MD)	BACKER SET (MD)
	D&A	

31. PERFORATION RECORD (Interval, size and number) D&A

32. ACID, SHOT, FRACTURE, CEMENT SQUEEZE, ETC.

DEPTH INTERVAL (MD)	AMOUNT AND KIND OF MATERIAL USED
D&A	

33. PRODUCTION

DATE FIRST PRODUCTION	PRODUCTION METHOD (Flowing, gas lift, pumping—size and type of pump)	WELL STATUS (Producing or shut-in)
D&A	D&A	D&A

DATE OF TEST	HOURS TESTED	CHOKE SIZE	PROD'N. FOR TEST PERIOD	OIL—BBL.	GAS—MCF.	WATER—BBL.	GAS-OIL RATIO

FLOW. TUBING PRESS.	CASING PRESSURE	CALCULATED 24-HOUR RATE	OIL—BBL.	GAS—MCF.	WATER—BBL.	OIL GRAVITY-API (CORR.)

34. DISPOSITION OF GAS (Sold, used for fuel, vented, etc.) TEST WITNESSED BY

35. LIST OF ATTACHMENTS  
Electric Logs, DST Report & Geological Well Report

36. I hereby certify that the foregoing and attached information is complete and correct as determined from all available records  
SIGNED [Signature] TITLE Agent DATE 9/20/76

DVR ✓  
FJP ✓  
JHM ✓  
JJD ✓  
GCH ✓  
CGM ✓

**37. SUMMARY OF POROUS ZONES:**  
 SHOW ALL IMPORTANT ZONES OF POROSITY AND CONTENTS THEREOF; CORED INTERVALS; AND ALL DRILL-STEM TESTS, INCLUDING DEPTH INTERVAL TESTED, CUSHION USED, TIME TOOL OPEN, FLOWING AND SHUT-IN PRESSURES, AND RECOVERIES.

FORMATION	TOP	BOTTOM	DESCRIPTION, CONTENTS, ETC.
See electric logs, DST report and Geological Well Report attached.			

**38. GEOLOGIC MARKERS**

NAME	TOP	
	MEAS. DEPTH	TRUE VERT. DEPTH



**CAT OIL COMPANY**  
450 DENVER CLUB BUILDING  
518 SEVENTEENTH STREET  
DENVER, COLORADO 80202

RECEIVED  
SEP 22 1976  
COLO. OIL & GAS CONS. COMM.

PHONE (303) 222-9484

WELL REPORT

GEESEN #3  
NE NE Sec. 21-T3S-R52W  
Washington County, Colorado

By:

Claus Axelsen, Geologist



TABLE OF CONTENTS

DISCUSSION	1
DAILY DRILLING CHRONOLOGY	2
DEVIATION SURVEYS	2
MUD INFORMATION	2
FORMATION TOPS	2
LOG ANALYSIS	3
DRILL STEM TEST	3
PLUGGING RECORD	3
STRIP LOG AND SAMPLE DESCRIPTION	4



## DISCUSSION

Bobcat Oil Company, et al, Geesen #3 was drilled in the Northeast of the Northeast of Section 21, Township 3 South, Range 52 West in Washington County, Colorado. The prime objective of the development well was the "J" Sand of Lower Cretaceous age.

The "D" Sand was topped at a depth of 4280' (+546 subsea). The "D" zone consisted of several benches of sand 6' to 18' thick. The sand was fine to medium grained argillaceous sandstone with fair to good porosity. No shows were seen in the samples.

The "J" Sand was topped at a depth of 4390' (+486 subsea). The sand was 50' thick and good sample shows were seen in the upper part of the sand zone. Log analysis indicated marginal oil saturation from 4346-4360', however, a drill stem test from 4346-4351' recovered 1160' of water.

The Geesen #3 was plugged on the basis of log calculations and drill stem test results.



SUMMARY

OPERATOR: Bobcat Oil Company  
WELL: Geesen #3  
LOCATION: NE NE Sec. 21-3S-52W  
COUNTY: Washington  
STATE: Colorado  
ELEVATIONS: 4818' GL - 4826' KB  
CASING: 8-5/8" OD 24# csg @ 136' KB  
HOLE SIZE: 7-7/8"  
TOTAL DEPTH 4446' (Log) - 4440' (Driller)  
TOTAL DEPTH FORMATION: "J" Sand  
SPUD: 9/ 7/76  
COMPLETED: 9/11/76  
CORES: None  
DRILL STEM TESTS: DST #1 (4346'-4351' KB)  
LOGS: IES and FDC/GR, Schlumberger  
CONTRACTOR: J. W. Gibson Well Service, Inc.  
PRODUCTION: D&A



DAILY DRILLING CHRONOLOGY

<u>DATE</u>	<u>FEET</u>	<u>ACTIVITY</u>	<u>FEET MADE</u>
9/ 7/76	136'	Spud @ 4:00 PM 9/7/76.	136'
9/ 8/76	216'	Drilling.	80'
9/ 9/76	3180'	Drilling.	2964'
9/10/76	4155'	Drilling.	975'
9/11/76	4440'	Logging.	285'

DEVIATION SURVEYS

<u>SURVEY</u>	<u>DEPTH</u>
1/2°	1139'
1/4°	3570'

MUD INFORMATION

<u>DATE</u>	<u>DEPTH</u>	<u>WEIGHT</u>	<u>VISCOSITY</u>
9/10/76	4155'	9.5	34

FORMATION TOPS

<u>FORMATION</u>	<u>LOG DEPTH</u>	<u>DATUM</u>
Niobrara	3360'	+1466
Bentonite	4195'	+ 631
"D" Sand	4280'	+ 546
"J" Sand	4340'	+ 486
Total Depth	4446'	



LOG ANALYSIS

Schlumberger

<u>DEPTH</u>	<u>RW</u>	<u>RT</u>	<u>POR</u>	<u>SW</u>	<u>REMARKS</u>
4340-4346'	.5	8	18	100	Tight
4346-4350'	.5	14	25	66	Show
4350-4360'	.5	13	25	68	Show
4360-4370'	.5	11.5	21	91	Wet
4370-4380'	.5	13	23	80	Wet

DRILL STEM TEST

Lynes Inc.

DST #1 (4346-4351'): Tool opened with strong blow off bottom of bucket, decreased slightly to good blow at end of flow period. Open 60, SI 30.  
 Recovery: 1160' Total Fluid - 500' muddy water;  
 660' water

Pressures: IH 2355  
 FH 2285  
 IF 512  
 ISIP 512

PLUGGING RECORD

Permission and instructions to abandon and plug the well were received from the Colorado Oil and Gas Conservation Commission. Plugs were set 9/11/76 as follows:

- 15 sx cement in bottom of surface casing
- 10 sx cement in bottom of surface casing

HOWS  
 = Dead  
 = Scat.  
 OIL  
 80-100%  
 40-80%  
 15-40%  
 5-15%

LITHOLOGY

DEPTH-ACCESSORY-  
 COMPLETION DATA

POROSITY  
 5-13%  
 13-18%  
 18-23%  
 23%+

DST'S

CORES

DRILLING TIME  
 MIN/FT

GAS LOG

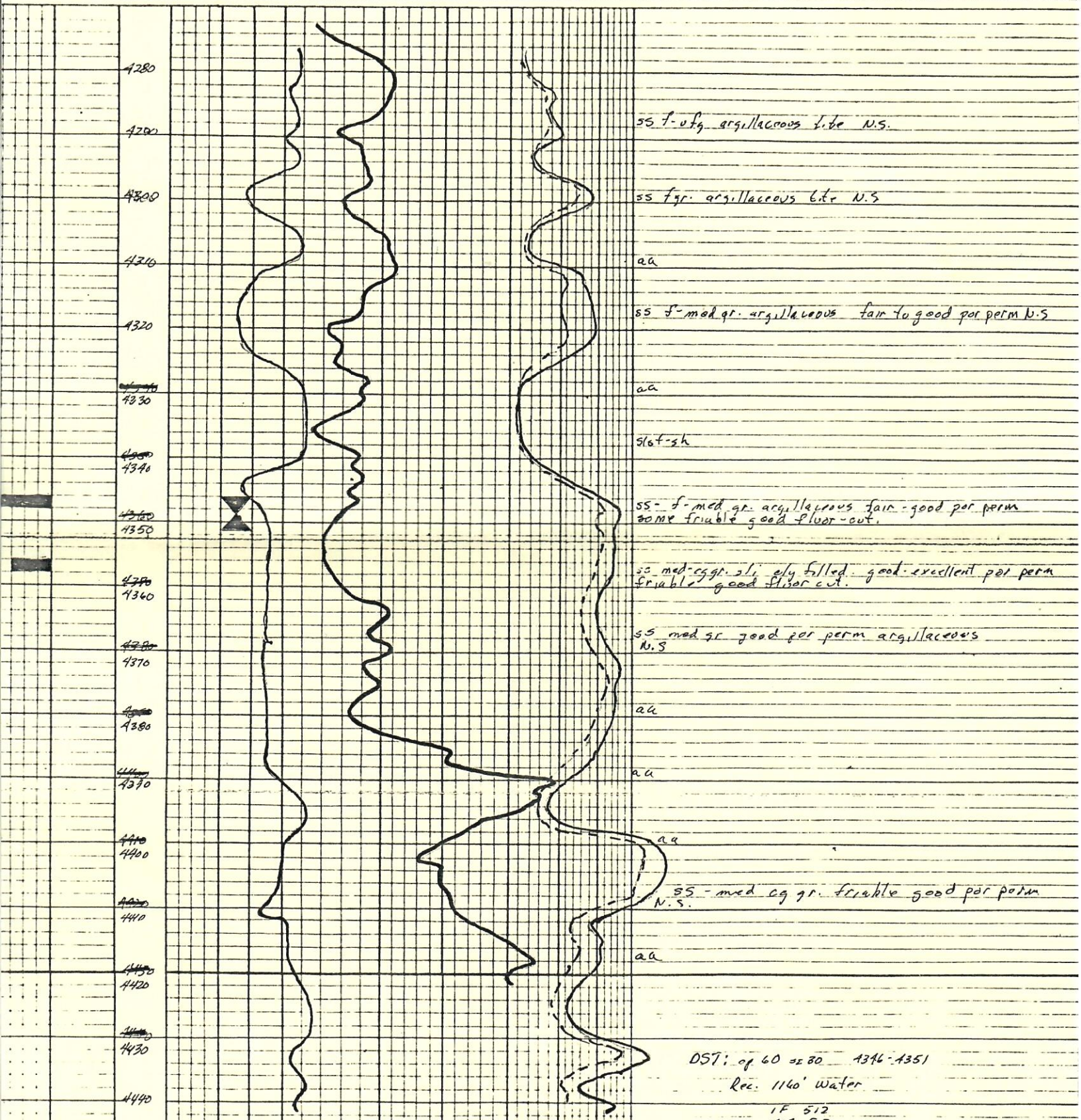
GEOLOGIST  
 CIRCULATION  
 BIT RECORD  
 DEVIATION

SCALE

5 10 15 20 25 30



GIC DESCRIPTION





Contractor Gibson Well Service  
 Rig No. 42  
 Spot NE-NE  
 Sec. 21  
 Twp. 3 S  
 Rng. 52 W  
 Field Sunup  
 County Washington  
 State Colorado  
 Elevation 4820' "Ground"  
 Formation "J" Sand

Top Choke 1"  
 Bottom Choke 9/16"  
 Size Hole 7 7/8"  
 Size Rat Hole --  
 Size & Wt. D. P. 4" 14.00  
 Size Wt. Pipe --  
 I. D. of D. C. 2 1/4"  
 Length of D. C. 264'  
 Total Depth 4446'  
 Interval Tested 4346-4351'  
 Type of Test Conventional Straddle

Flow No. 1 60 Min.  
 Shut-in No. 1 30 Min.  
 Flow No. 2 -- Min.  
 Shut-in No. 2 -- Min.  
 Flow No. 3 -- Min.  
 Shut-in No. 3 -- Min.

Bottom Hole Temp. --  
 Mud Weight 10.2  
 Gravity --  
 Viscosity 80

Tool opened @ 2:04 PM.

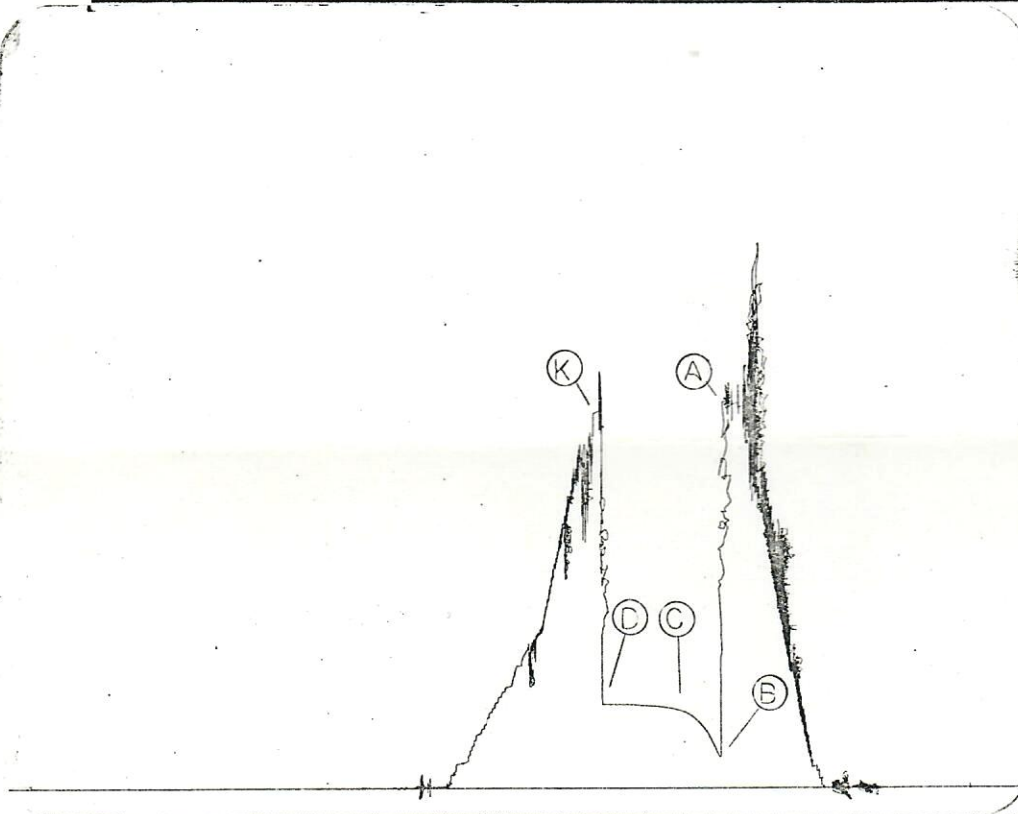
**Inside Recorder**

PRD Make Kuster AK-1  
 No. 3148 Cap. 4600 @ 4333'

	Press	Corrected
Initial Hydrostatic	A	2350
Final Hydrostatic	K	2279
Initial Flow	B	191
Final Initial Flow	C	510
Initial Shut-in	D	515
Second Initial Flow	E	--
Second Final Flow	F	--
Second Shut-in	G	--
Third Initial Flow	H	--
Third Final Flow	I	--
Third Shut-in	J	--

Our Tester: Fred Webb

Witnessed By: Claus Axelson



Did Well Flow - Gas No Oil No Water No

RECOVERY IN PIPE: 1160' Total Fluid  
500' Muddy water = 5.40 Bbl.  
660' Water = 5.48 Bbl.

-----  
 1st Flow - Tool opened with strong blow to bottom of bucket in 1 minute, decreased to good blow at end of flow period.  
 -----

REMARKS: Recovery: Top - R.W. 2.0 @ 94°F = 2200 ppm. chl.  
 Middle - R.W. 3.2 @ 90°F = 1360 ppm. chl.  
 Bottom - R.W. 3.2 @ 90°F = 1360 ppm. chl.

-----  
 Rig water - R.W. 3.0 @ 72°F = 1850 ppm. chl.  
 -----

Pit - R.W. 1.8 @ 85°F = 2650 ppm. chl.  
 -----

*file*

Operator Bobcat Oil Co. & Sulpetro International, Ltd.  
 Address See Distribution  
 Well Name and No. Geesen #3  
 Ticket No. 2953  
 Date 9-11-76  
 DST No. 1  
 No. Final Copies 5

*file*  
 RECEIVED  
 SEP 22 1976  
 COLORADO OIL & GAS COMPANY

# LYNES UNITED SERVICES

LYNES, INC.

RECEIVED

SEP 22 1976

COLO. OIL & GAS CONS. COMM.

Operator Bobcat Oil & Sulpetro Int., Lease & No. Geesen #3 DST No. 1

Recorder #3148 @ 4333'

## FIRST SHUT IN PRESSURE:

TIME(MIN)	(T"PHI)	PSIG
PHI	/PHI	
0.0	0.0000	510
3.0	21.0000	513
6.0	11.0000	514
9.0	7.6667	515
12.0	6.0000	515
15.0	5.0000	515
18.0	4.3333	515
21.0	3.8571	515
24.0	3.5000	515
27.0	3.2222	515
30.0	3.0000	515

EXTRAPLN OF FIRST SHUT IN : 515.1 M : 0.1

Extrapolations of reservoir pressures should be used as indicators only.





**UNITED SERVICES**

DIVISION OF LYNES, INC.

RECEIVED

SEP 22 1976

COLO. OIL & GAS CONS. COMM.



**DISTRIBUTION OF FINAL DST REPORTS**

Operator Bobcat Oil Co. Lease Geesen Well No. 3

Original & 2 copies: Bobcat Oil Co., 450 Denver Club Bldg., Denver, Colorado, 80202

1 copy: Oxoco Texas, Inc., 537 Houston Gas Bldg., Houston, Texas, 77002

1 copy: Sulpetro, 1100 One Energy Square, Dallas, Texas, 75206

Multiple horizontal lines for additional distribution information.