



00362532

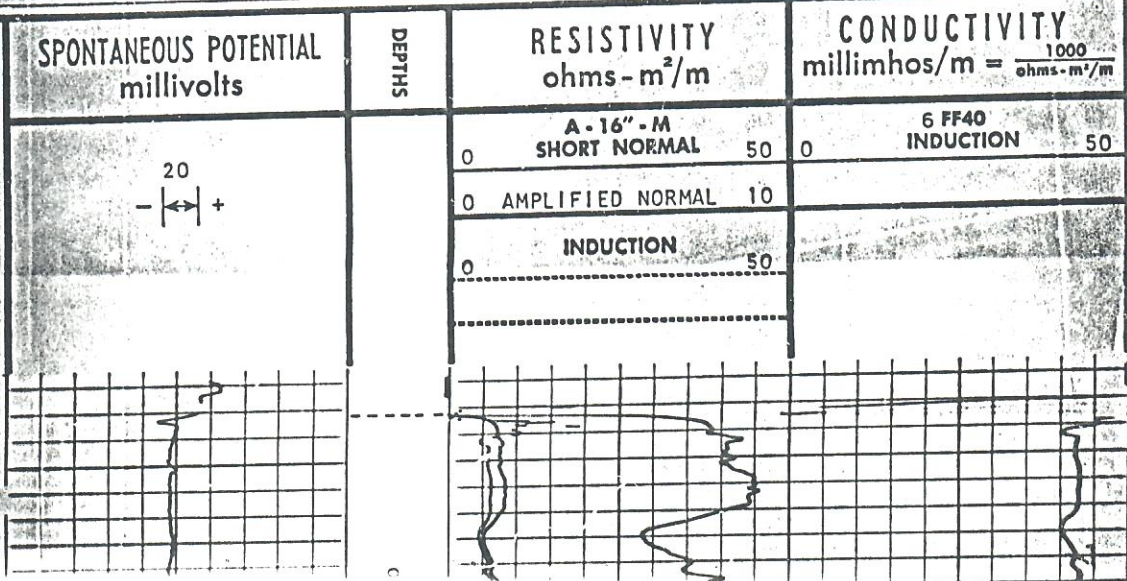
COUNTY WASHINGTON
 FIELD or LOCATION WILDCAT SEC. 20-3S-50W
 WELL #1 FRIEND
 COMPANY APEX OIL COMPANY
 COMPANY APEX OIL COMPANY
 WELL #1 FRIEND
 FIELD WILDCAT DISC DRAPD
 COUNTY WASHINGTON STATE COLORADO
 LOCATION C SW NE 7
 Sec. 20 Twp. 3S Rge. 50W
 Other Services: SGR/C
 Moment Datum: GL Elev.: 4551.5
 Measured from: KB Elev.: K.B. 4558.5
 Jiling Measured from: IR Elev.: D.F. 4551.5
 Elev.: G.L. 4551.5
 Date: AUG 14 1964
 OIL & GAS
 CONVENTION COMMISSION @

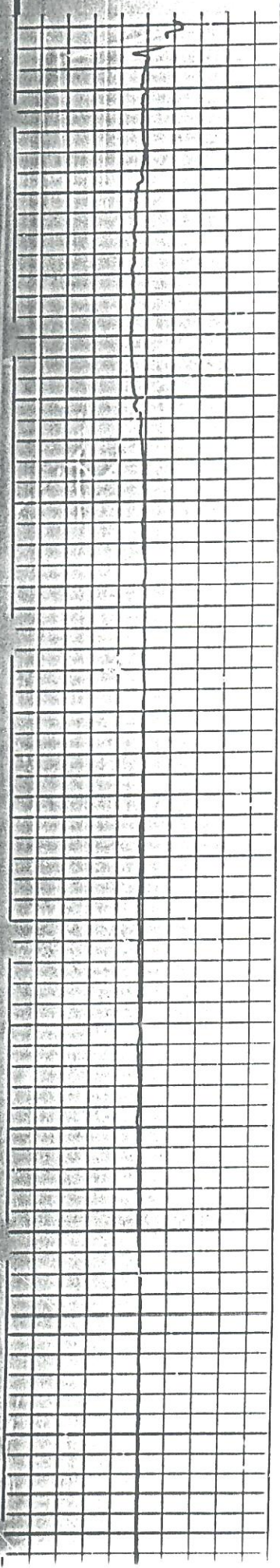
in No.	7-15-64	ONE
path-Driller	4031	
path-Logger	4032	
m. Log Interval	4031	
Log Interval	232	
Casing-Driller	8 5/8 @ 232	
Casing-Logger	232	
Bit Size	7 7/8	
Type Fluid in Hole	GEL	
Dens.	9.7	115
Visc.	9.5	4.8 ml
PH	2.15 @ 85 °F	
Source of Sample	2.15 @ 85 °F	
Flow Line	1.52 @ 86 °F	
R _m @ Meas. Temp.	1.40 @ 118 °F	
R _{nl} @ Meas. Temp.	1.40 @ 118 °F	
R _{nr} @ Meas. Temp.	1.45 @ 118 °F	
Time Since Circ.	2 HRS.	
Max. Rec. Temp.	118 °F	
Equip. Location	4539 FM	
Recorded By	RUSEN	
Witnessed By	ALLEN	

SCHLUMBERGER
 INDUCTION ELECTRICAL LOG
 SCHLUMBERGER WELL SURVEYING CORPORATION
 Houston, Texas

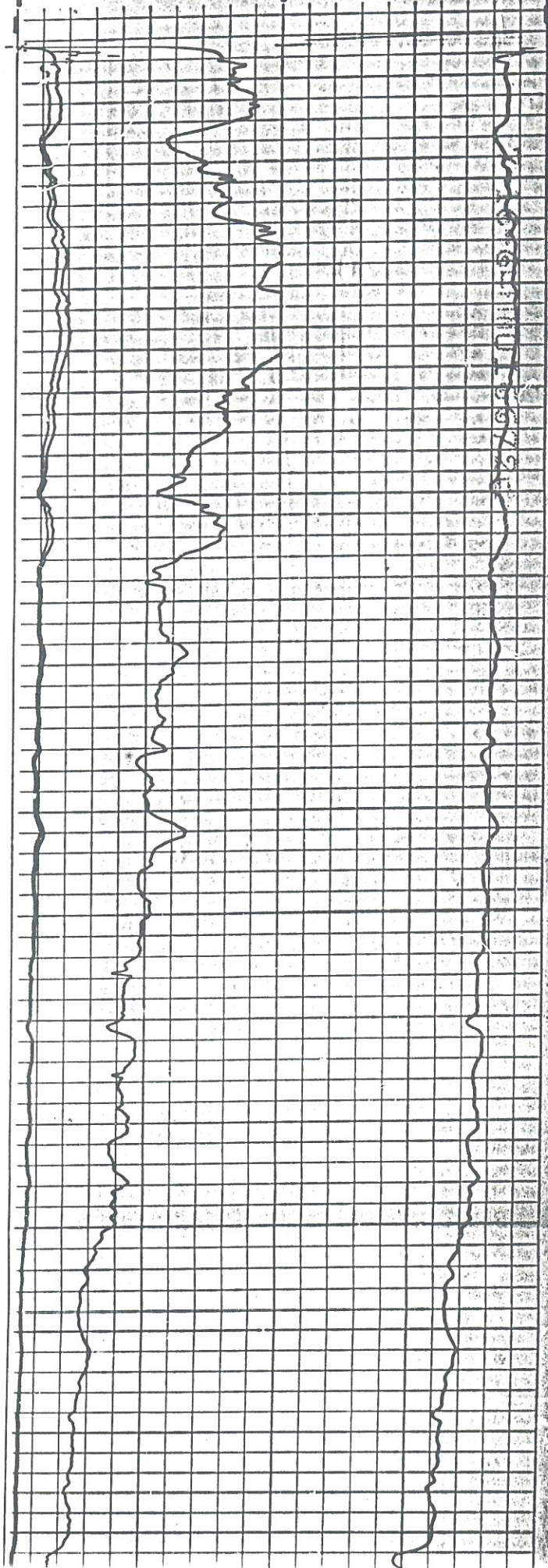
FOLD HERE

REMARKS		Scale Changes			
Date	Sample No.	Type Log	Depth	Scale Up Hole	Scale Down Hole
Changes in Mud Type or Additional Samples					
Type Fluid in Hole					
Dens. Visc.					
ph Fluid Loss ml					
Source of Sample					
R _m @ Meas. Temp. °F					
R _{nl} @ Meas. Temp. °F					
R _{nr} @ Meas. Temp. °F					
Source: R _{nr} R _{nr}					
R _m @ BHT °F					
R _{nl} @ BHT °F					
R _{nr} @ BHT °F					
Run No.: ONE					
C.D.: USED					
S.O.: 1 1/2					
Equip. Used: CART. No.: 487 G					
PANEL No.: 114 F					
SONDE No.: 263 K					
S.B.R.: 2					





0300
0400
0500
0600
0700
0800
0900



0300
0400
0500
0600
0700
0800
0900

	QTR	QTR	SEC	TWNS	RANGE	PM	NAME	DEPTH	TPERF	BPERF
A	NE	SW	15	030S	0500W	S	YOUNG J A			
B	NE	SW	15	030S	0500W	S	COLO.STATE BOARD LAND COMM.	260		
C	NE	NE	18	030S	0500W	S	WILLIS O			
D	NE	NE	18	030S	0500W	S	WILLIS OLA	256		
E	CN	E	19	030S	0500W	S	FRIEND			
F	C	NE	19	030S	0500W	S	FRIEND ARNOLD	226		
G	NW	SW	19	030S	0500W	S	FRIEND ARNOLD E.			
H	CS	E	20	030S	0500W	S	FRIEND			
I	SE	NW	20	030S	0500W	S	FRIEND MARTIN	195	155	195
J	C	SE	20	030S	0500W	S	FRIEND ARNOLD	2460		
K	NW	SW	20	030S	0500W	S	KRAUSE WILLIAM	244		
L	NW	SE	21	030S	0500W	S	MILLER LESTER	190		
M	NW	SW	22	030S	0500W	S	HOGAN GEORGE	270		
N	SE	SE	23	030S	0500W	S	DONALD A M	130		
O	C	SE	24	030S	0500W	S	HILL DEAN E.			
P	NE	NE	25	030S	0500W	S	DONALD A M	150		
Q	SE	SE	25	030S	0500W	S	KING MASON A & LINDA	230		
R	NE	SW	25	030S	0500W	S	PAGE RICHARD I.	223		
S	SE	SW	25	030S	0500W	S	PAGE EZRA B	230		
T			26	030S	0500W	S	LIGHTFOOT RICHARD	200		

Letter=Choice | F10=Mark 1 | PgUp/PgDn=±20 | UpAr/DnAr =±1 | Esc=Quit

	QTR	QTR	SEC	TWNS	RANGE	PM	NAME	DEPTH	TPERF	BPERF
A			26	030S	0500W	S	LIGHTFOOT RICHARD	200		
B	CS	E	28	030S	0500W	S	MILLER			
C	SW	SE	28	030S	0500W	S	MILLER LESTER E.	246		
D	SW	SW	28	030S	0500W	S	MILLER			
E	SW	SW	28	030S	0500W	S	MILLER L			
F	SW	SW	28	030S	0500W	S	MILLER LESTER E.	227		
G	SW	NE	29	030S	0500W	S	FRANK PAUL			
H	NW	NW	29	030S	0500W	S	KRAUSE GLENWORTH			
I	C	NW	30	030S	0500W	S	FRIEND ARNOLD E.			
J	SW	NW	30	030S	0500W	S	FRIEND ARNOLD	215		
K	SE	SE	31	030S	0500W	S	BARTLETT R			
L	SE	SE	31	030S	0500W	S	BARTLETT ROBERT	142		
M		SE	32	030S	0500W	S	LAYBOURN DOUG /SCHAAL DRLG			
N	SE	SE	32	030S	0500W	S	LAYBOURN DOUG	130	100	130
O	SW	NW	33	030S	0500W	S	COLPITTS F K	234	194	234
P	SW	NW	33	030S	0500W	S	COLPITTS F K	234		
Q	NW	NE	34	030S	0500W	S	PAGE RICHARD I.			
R	NW	NE	34	030S	0500W	S	PAGE RICHARD I.			
S	SW	NW	34	030S	0500W	S	PAGE RICHARD	122		
T	SW	NW	34	030S	0500W	S	PAGE RICHARD I. & JUNE I.	120		

Letter=Choice | F10=Mark 1 | PgUp/PgDn=±20 | UpAr/DnAr =±1 | Esc=Quit