



CCL / VDL
GAMMA RAY
CEMENT BOND LOG

Company CHEVRON
Well ROMERO G03-29D
Field WATTENBERG
County WELD State COLORADO

Location: API #: 05-123-30855
LAT: 40.346924114
LONG: -104.656712645
Other Services: N/A

Company CHEVRON
Well ROMERO G03-29D
Field WATTENBERG
County WELD
State COLORADO

Date 22-OCT-2025
Run Number ONE
Depth Driller 7321'
Depth Logger 2325'
Bottom Logged Interval 2320'
Top Log Interval SURFACE
Open Hole Size 12-1/4"
Type Fluid WATER
Density / Viscosity ---
Max. Recorded Temp. ---
Estimated Cement Top SEE LOG
Time Well Ready ROA
Time Logger on Bottom 8:30
Equipment Number 473
Location GREELEY
Recorded By JOSH KRAL
Witnessed By BRANDON TRACY

| Borehole Record | | | | Tubing Record | | | |
|-----------------|-----|------|----|---------------|--------|------|----|
| Run Number | Bit | From | To | Size | Weight | From | To |
| | | | | | | | |
| | | | | | | | |
| | | | | | | | |
| | | | | | | | |

Casing Record
Surface String 8-5/8" 32 # Mg/ft SURFACE 552'
Prot. String
Production String 4-1/2" 11.60 # SURFACE 7309.4'
Liner

<<< Fold Here >>>

All interpretations are opinions based on inferences from electrical or other measurements and we cannot and do not guarantee the accuracy or correctness of any interpretation, and we shall not, except in the case of gross or willful negligence on our part, be liable or responsible for any loss, costs, damages, or expenses incurred or sustained by anyone resulting from any interpretation made by any of our officers, agents or employees. These interpretations are also subject to our general terms and conditions set out in our current Price Schedule.

Comments

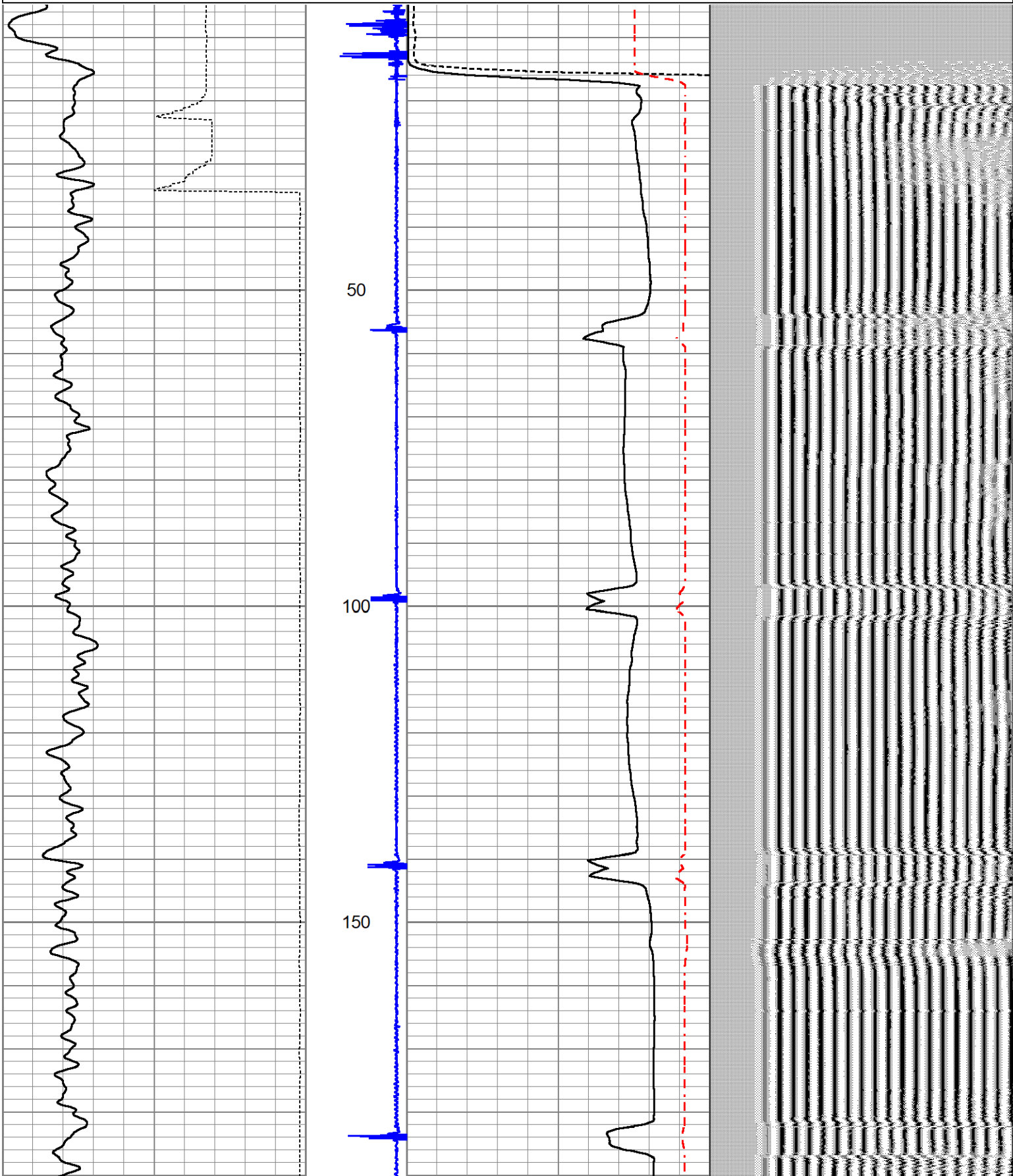
LOG RAN PER CUSTOMER REQUEST
FREE PIPE = 81.198 mV
THANK YOU FOR CHOOSING JMR SERVICES

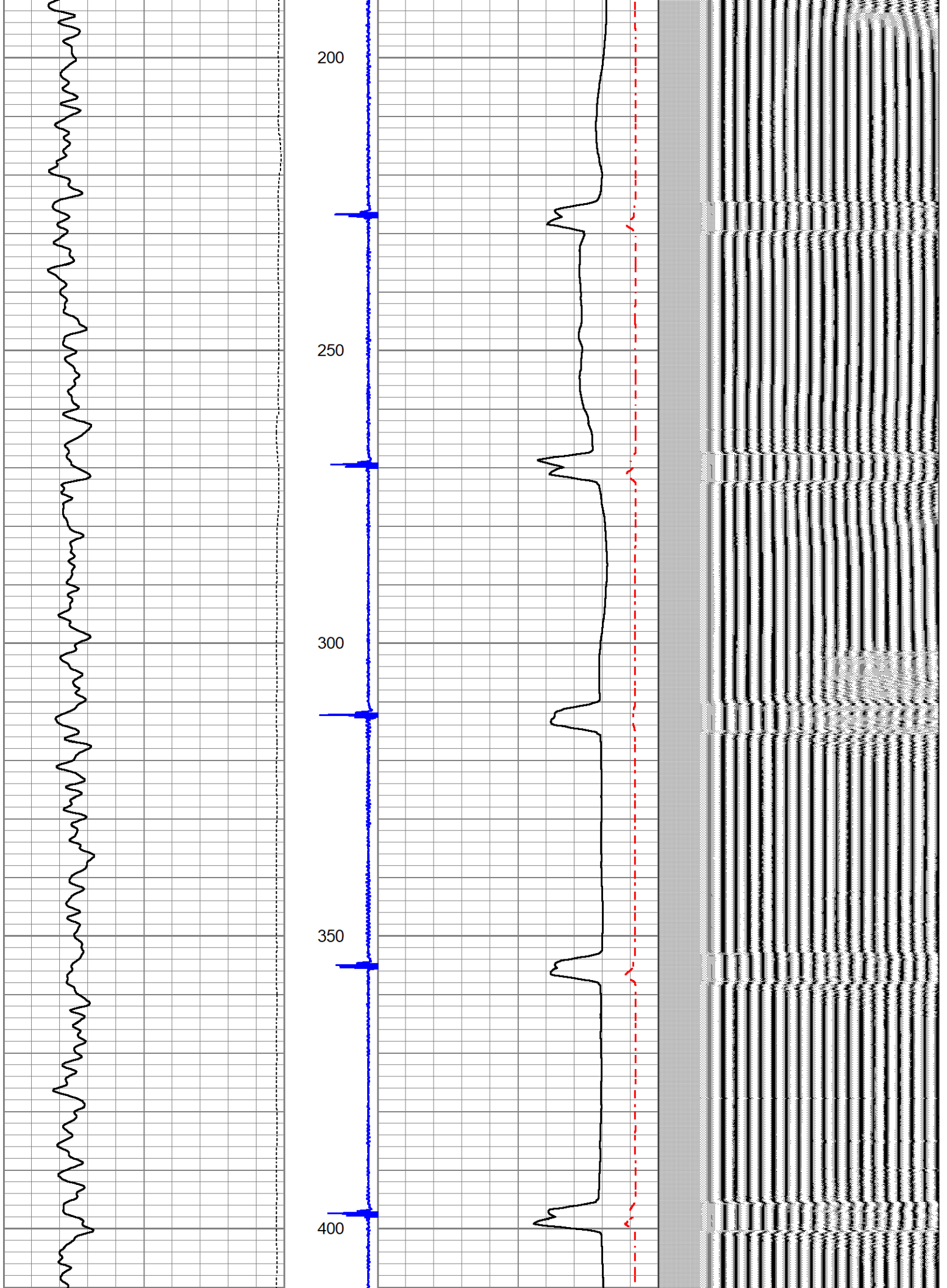


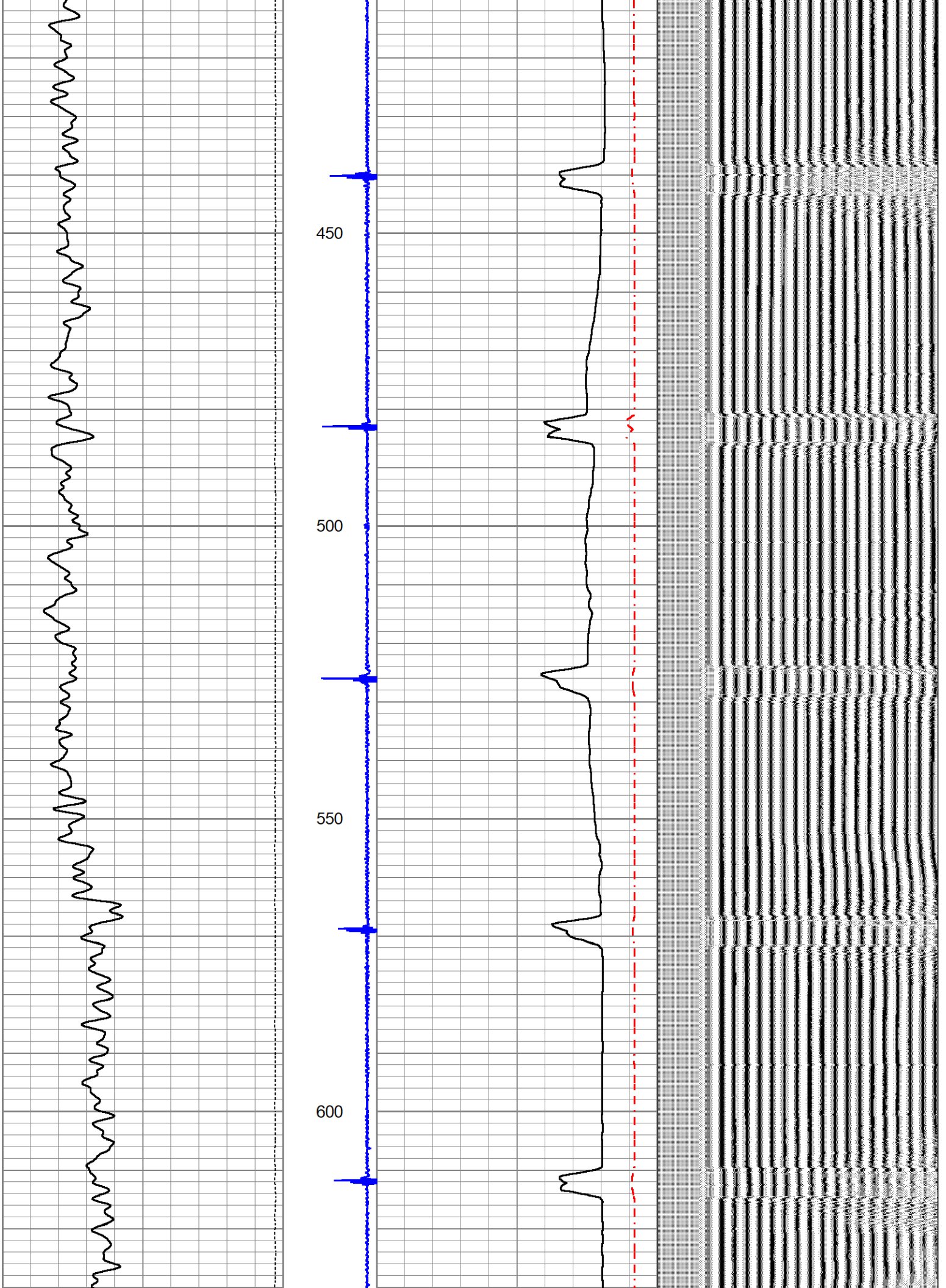
MAIN PASS

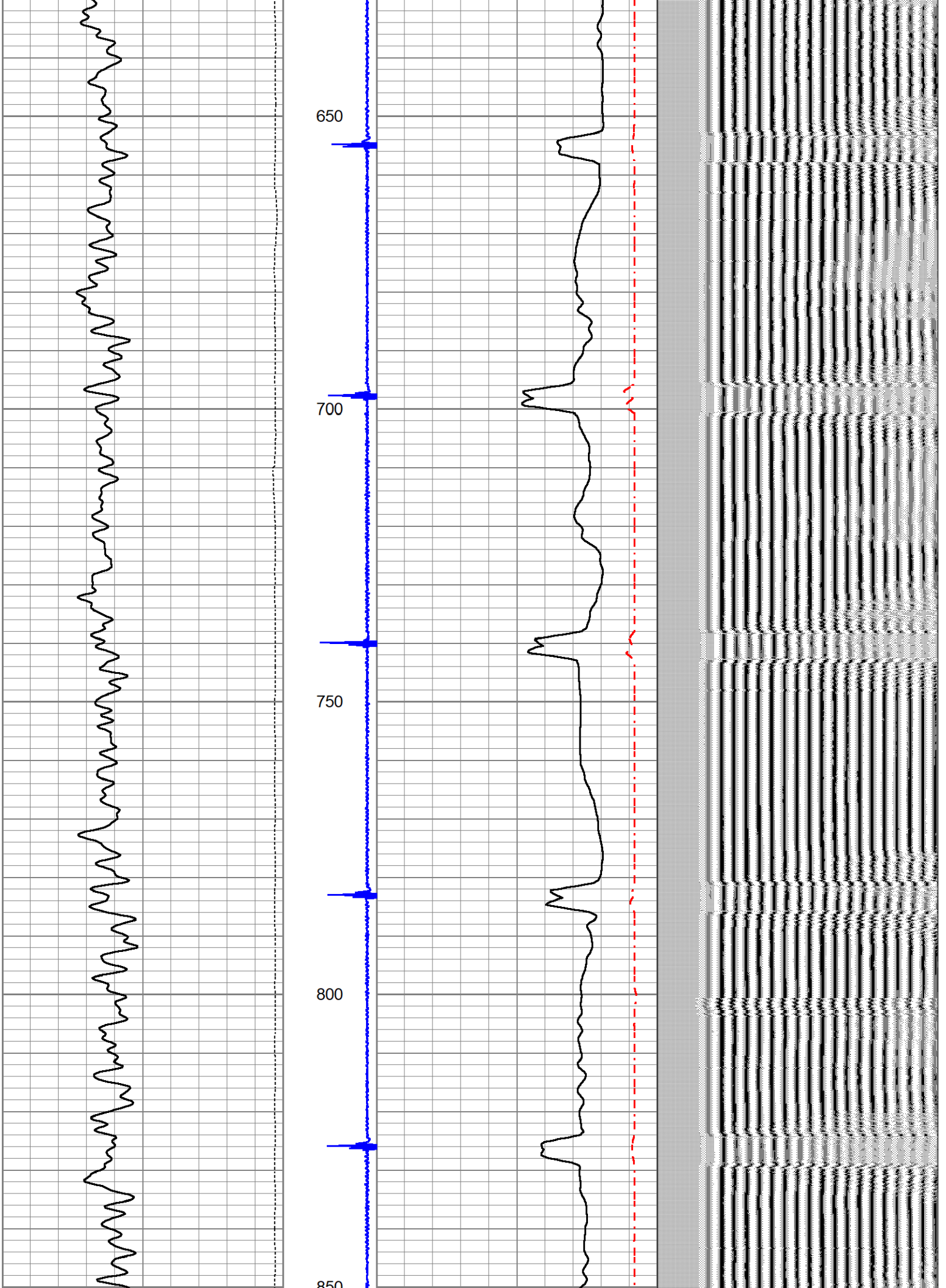
Database File chevron_romero_g03-29d_cbl.db
 Dataset Pathname Rig_12-473/Romero_G03-29D/run1/pass4
 Presentation Format cbl_dr
 Dataset Creation Wed Oct 22 08:30:17 2025
 Charted by Depth in Feet scaled 1:240

| | | | | | | | | | |
|-----|---------------------|------|-----------------|---|--------------------------|----------------|-----|------------|------|
| 0 | Gamma Ray (GAPI) | 250 | Collar Location | 0 | Amplified Amplitude (mV) | 20 | 200 | VDL (usec) | 1200 |
| 100 | Line Speed (ft/min) | -100 | -9 | 1 | 0 | Amplitude (mV) | 100 | | |
| | | | | | 1200 | TT3FT (usec) | 200 | | |











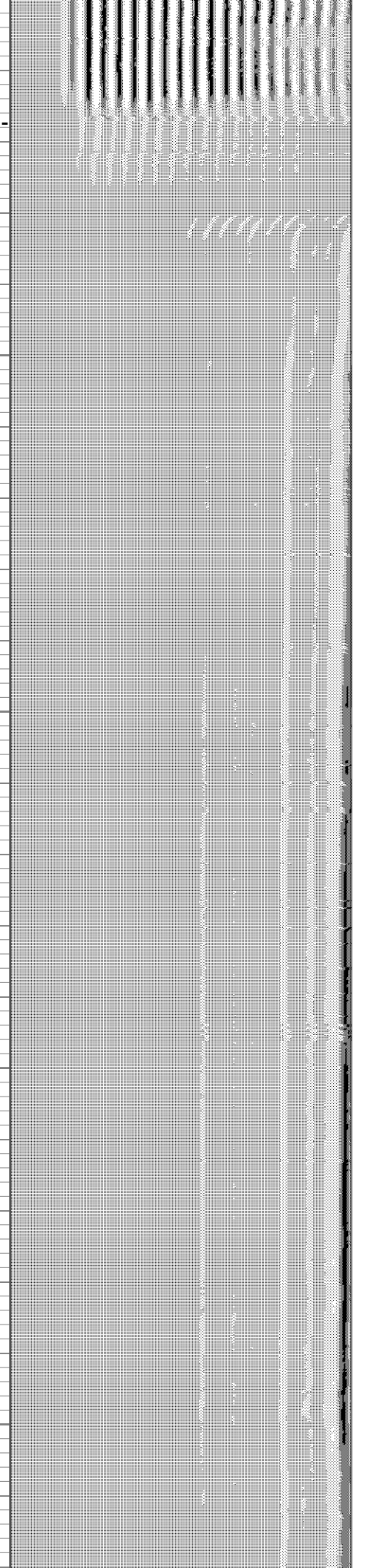
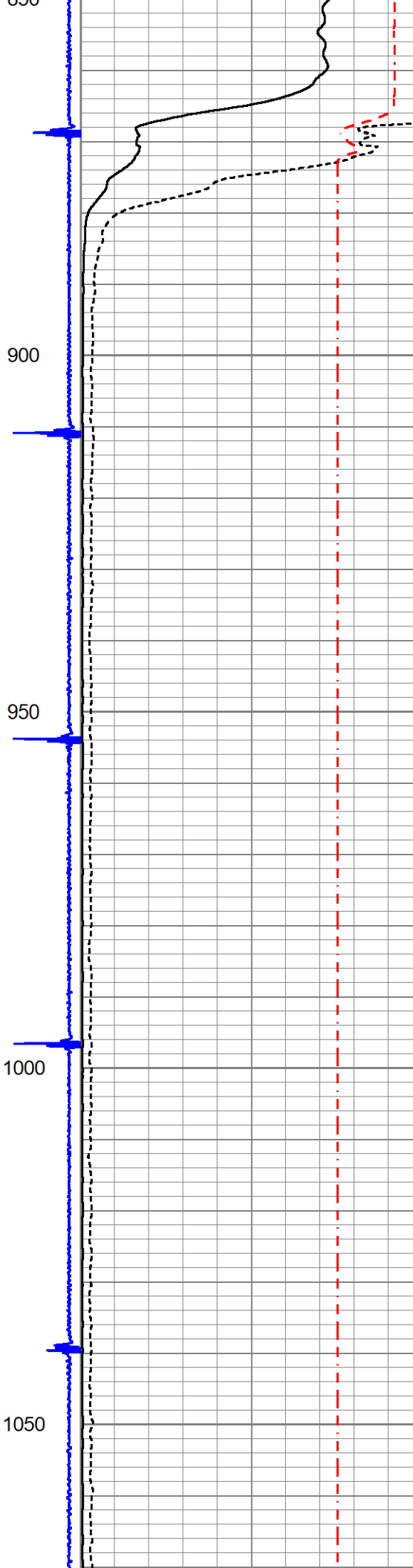
850

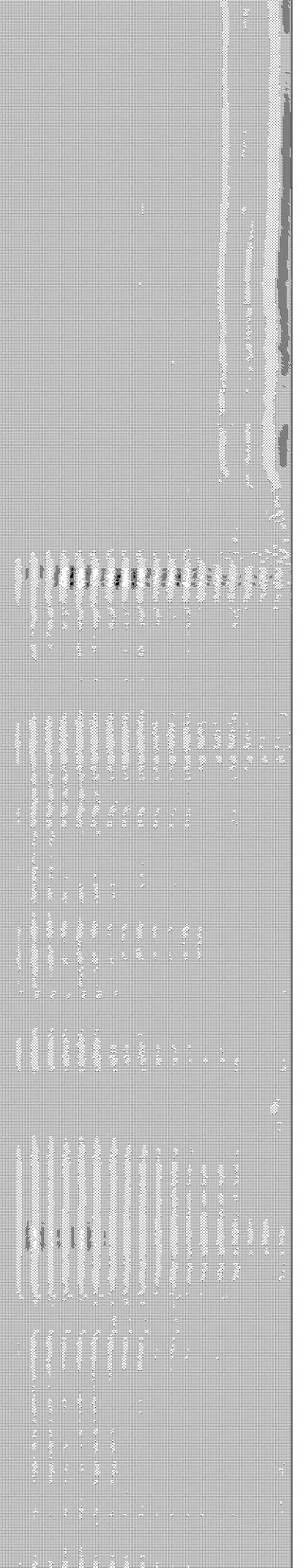
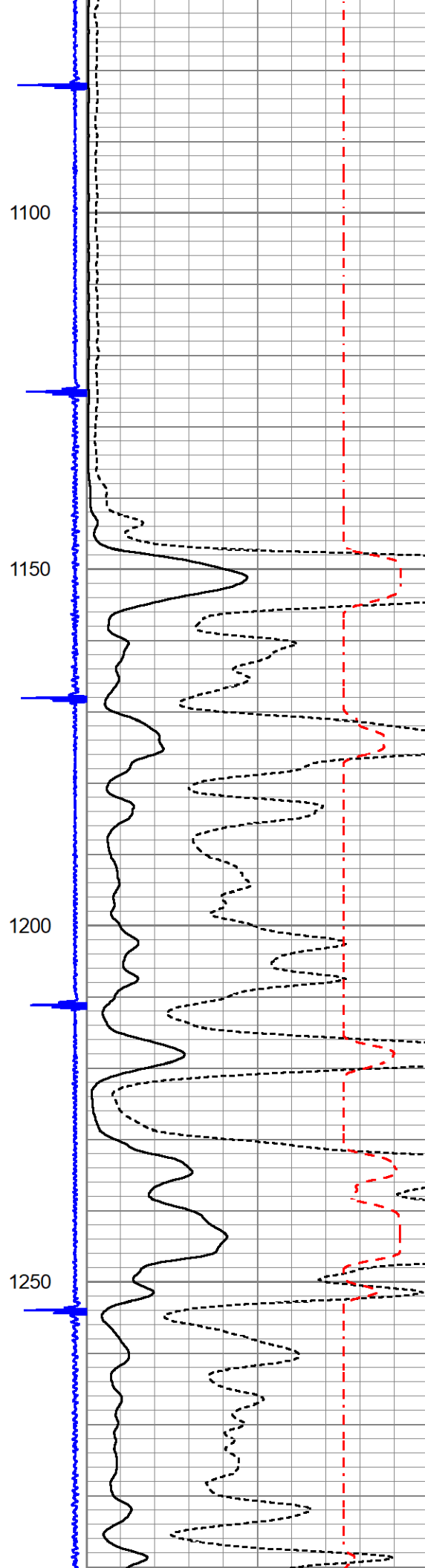
900

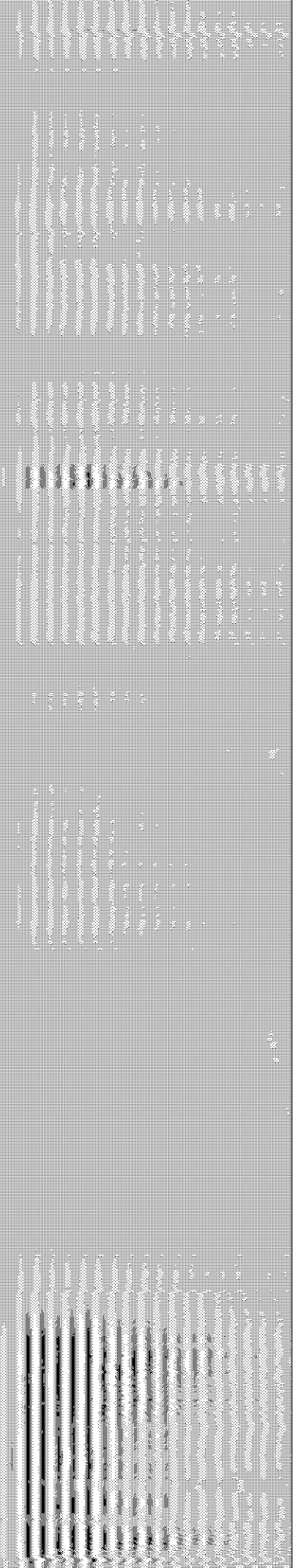
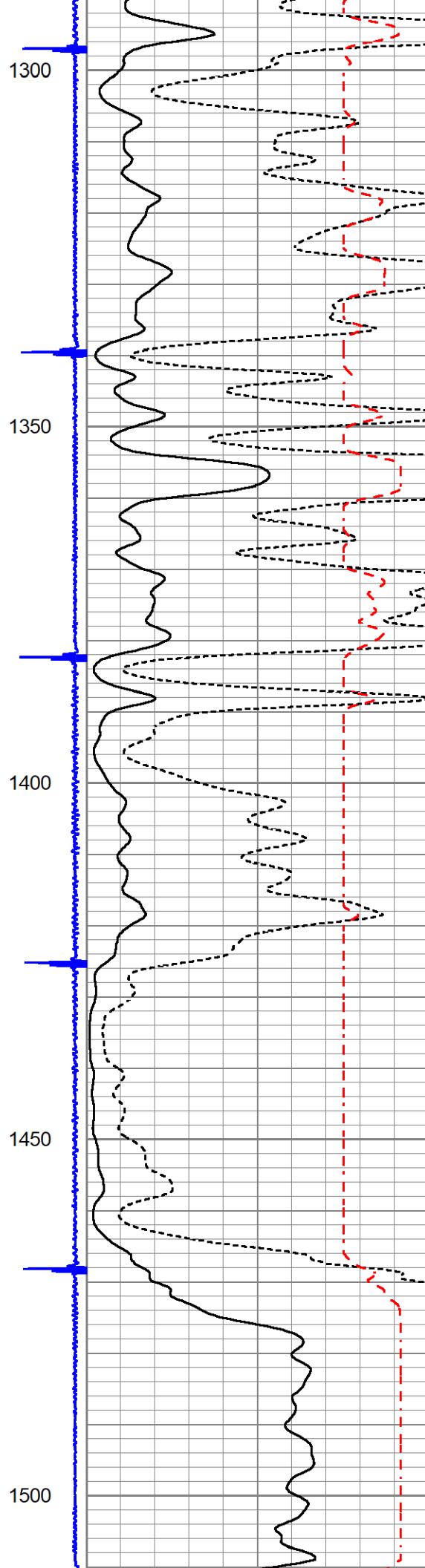
950

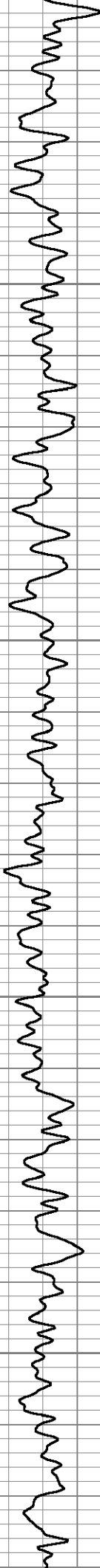
1000

1050







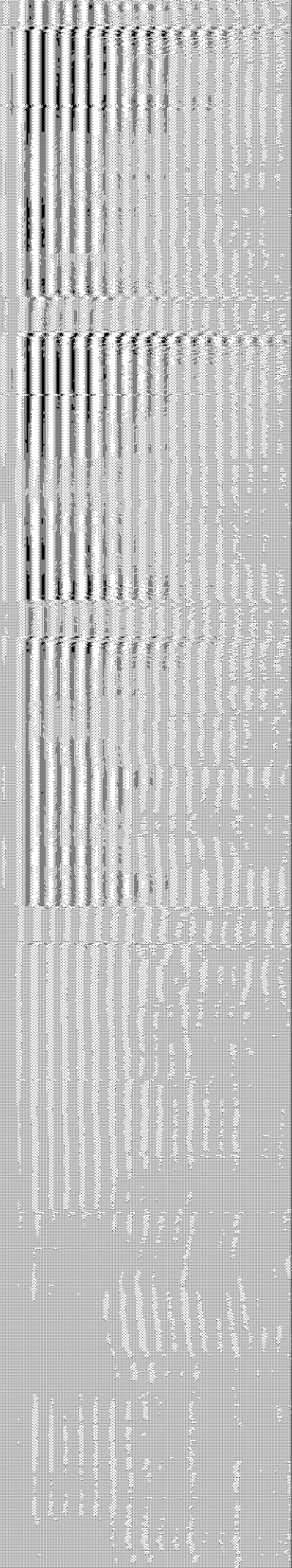
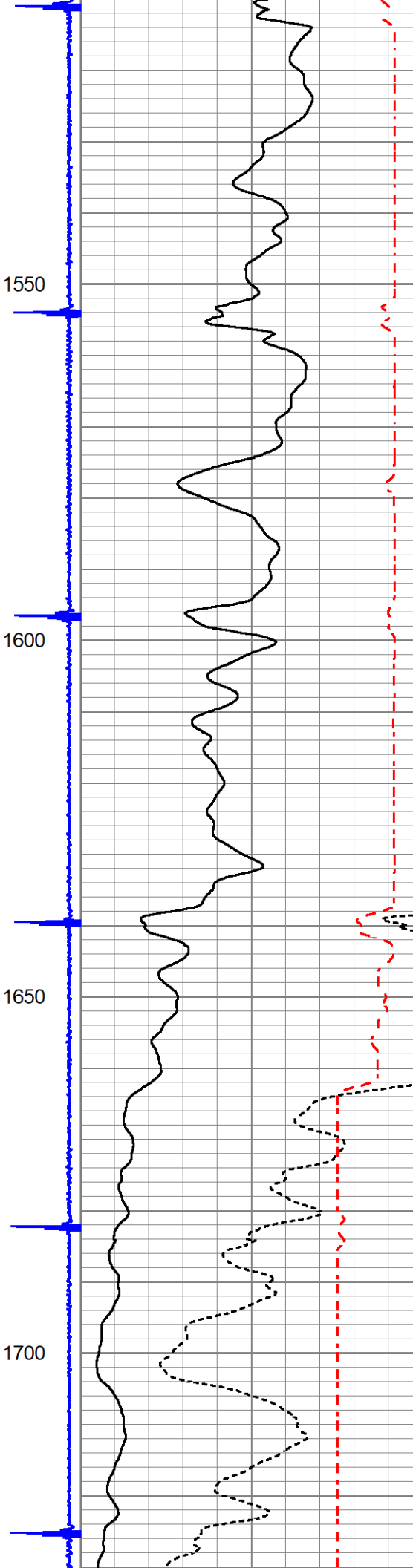


1550

1600

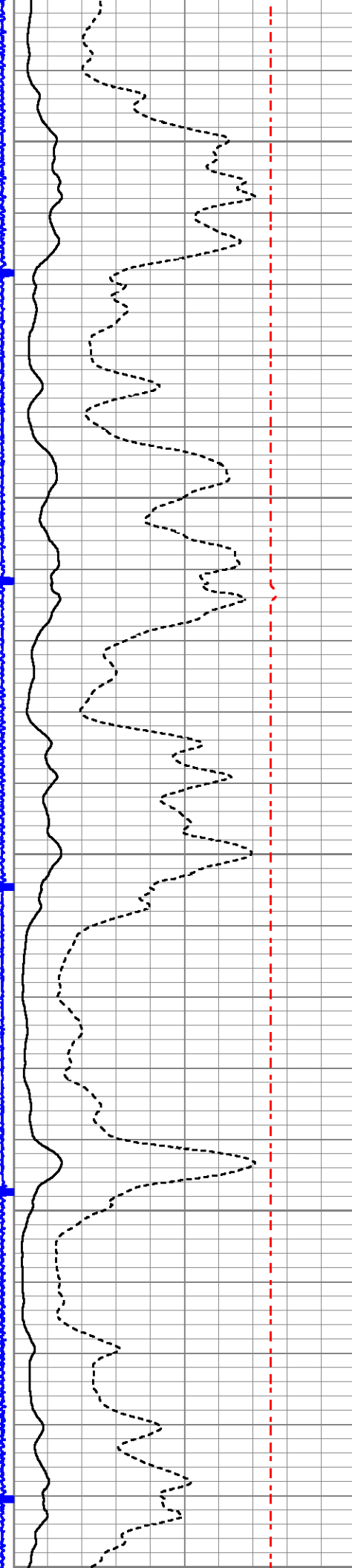
1650

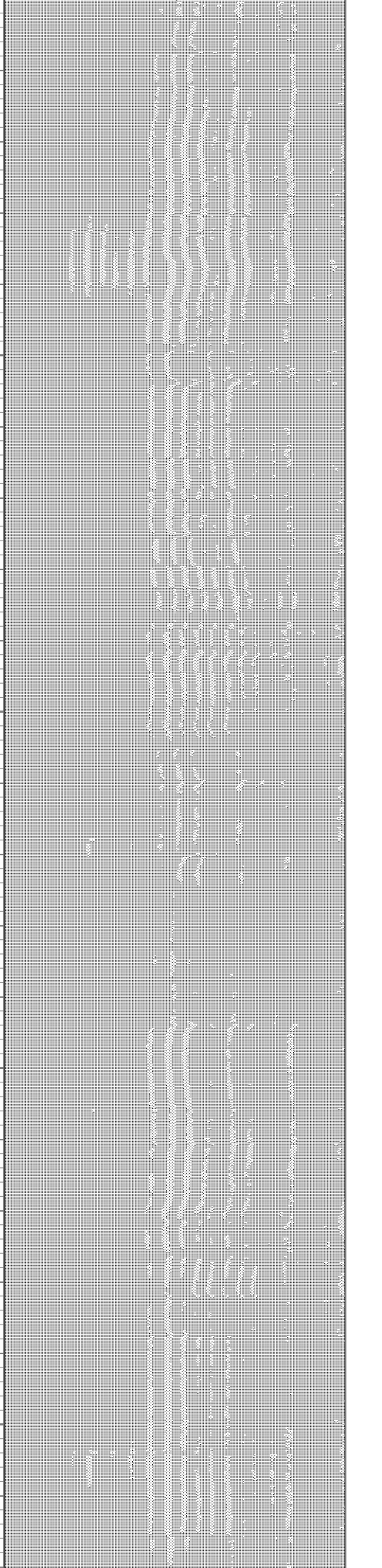
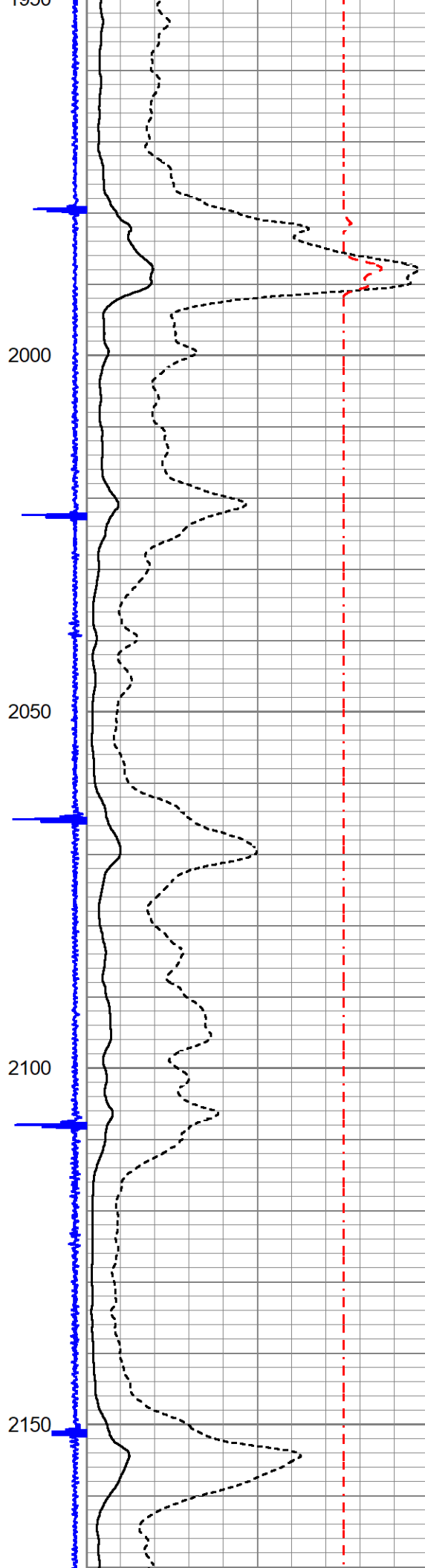
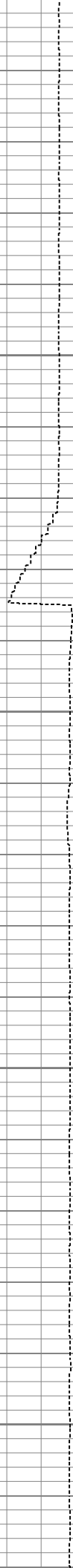
1700

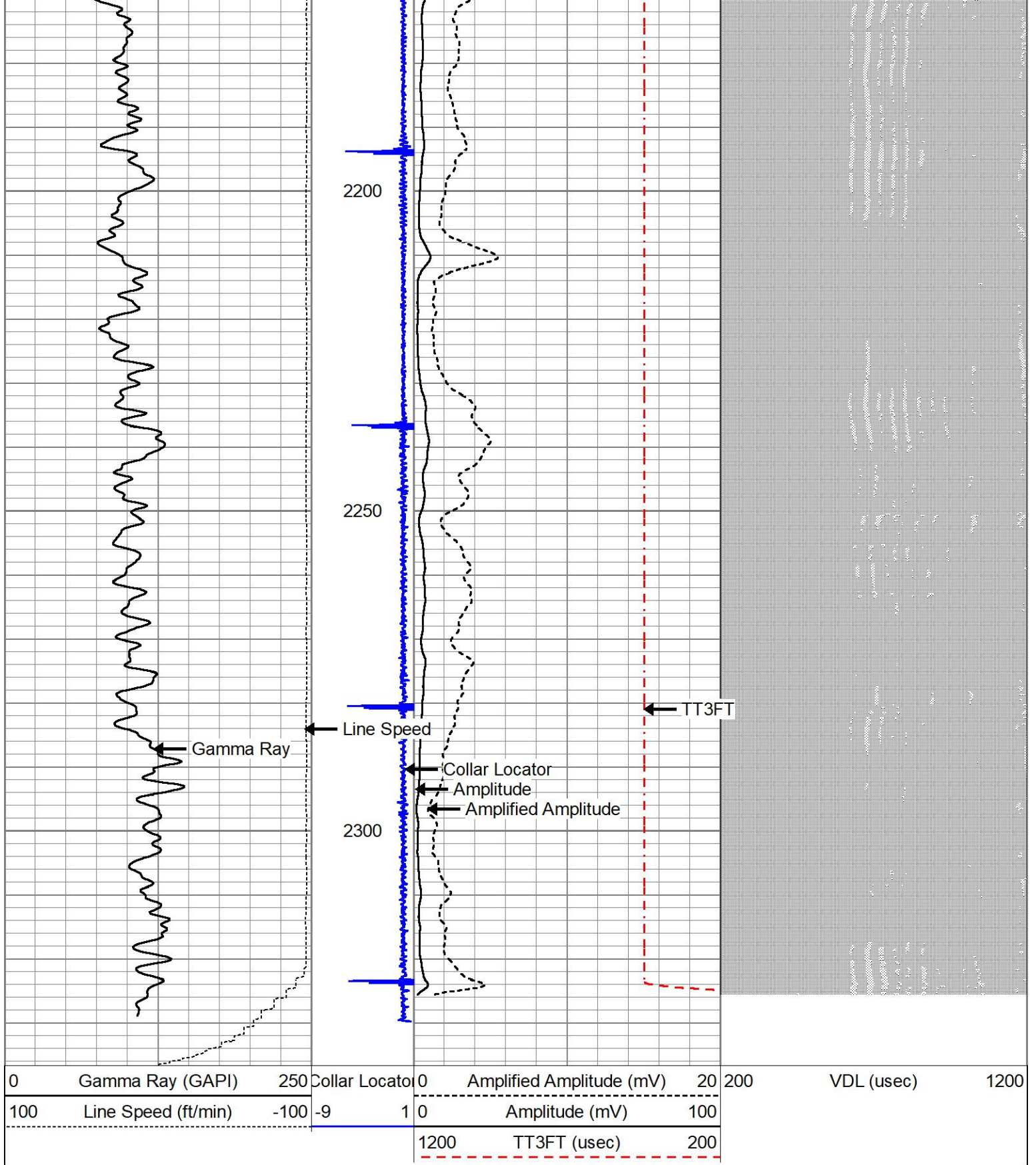




1750
1800
1850
1900
1950



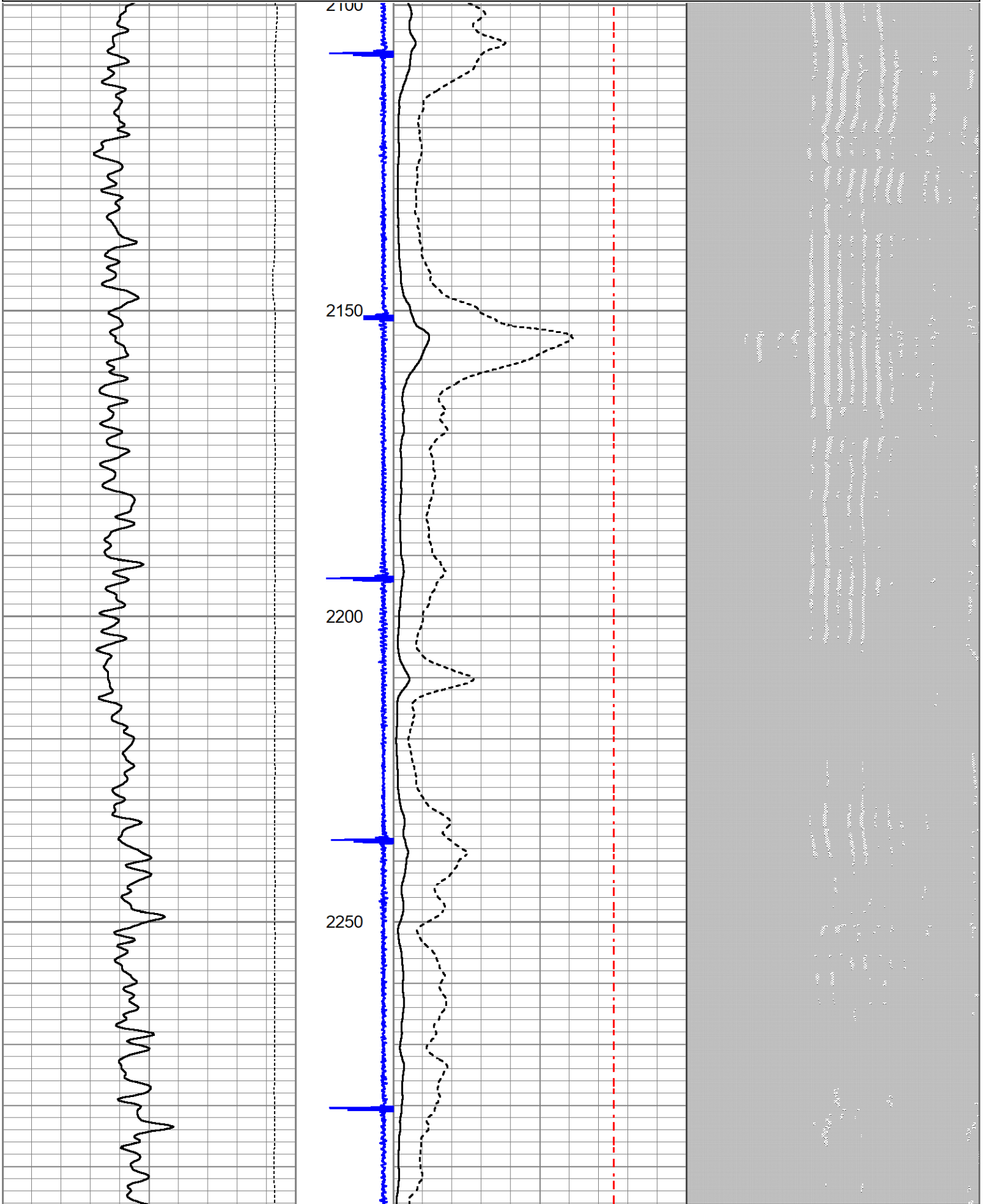


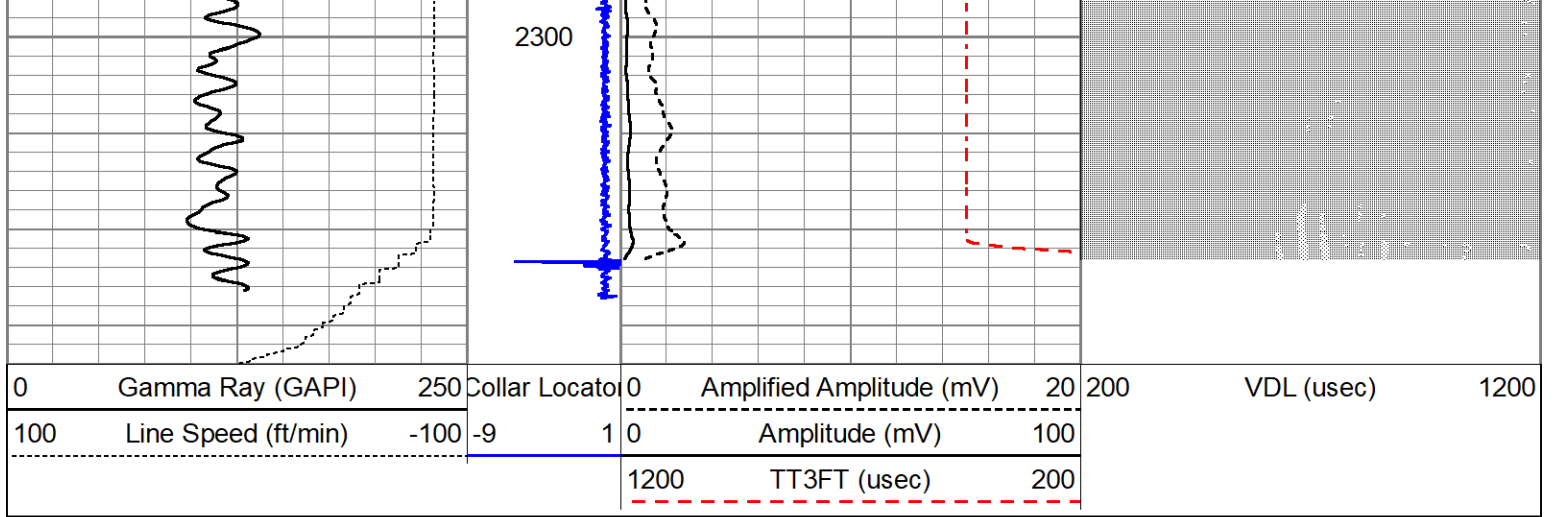


REPEAT PASS

Database File chevron_romero_g03-29d_cbl.db
 Dataset Pathname Rig_12-473/Romero_G03-29D/run1/pass3
 Presentation Format cbl_dr
 Dataset Creation Wed Oct 23 08:25:54 2025

| | | | | | | | | | |
|-----|---------------------|------|-----------------|---|--------------------------|----------------|-----|------------|------|
| 0 | Gamma Ray (GAPI) | 250 | Collar Location | 0 | Amplified Amplitude (mV) | 20 | 200 | VDL (usec) | 1200 |
| 100 | Line Speed (ft/min) | -100 | -9 | 1 | 0 | Amplitude (mV) | 100 | | |
| | | | | | 1200 | TT3FT (usec) | 200 | | |





Log Variables

DatabaseC:\ProgramData\Warrior\Data\chevron_romero_g03-29d_cbl.db
 Dataset Rig_12-473/Romero_G03-29D/run1/pass4/_vars_

Top - Bottom

| | | | | | | | |
|-----------------------|------------------------|----------------------|---------------------|---------------------------|--------------------|--------------------|-------------------------|
| BOREID in 7.875 | BOTTEMP degF 100 | CASEOD in 4.5 | CASETHCK in 0 | CASEWGHT lb/ft 11.6 | MAXAMPL mV 0 | MINAMPL mV 1 | MINATTN db/ft 0.8 |
| PERFS No | PPT uSec 0 | SRFTEMP degF 0 | TDEPTH ft 0 | | | | |

Variable Description

| | | |
|-----------------------------------|-------------------------------|-------------------------------|
| BOREID : Borehole I.D. | CASEWGHT : Casing Weight | PERFS : Perforation Flag |
| BOTTEMP : Bottom Hole Temperature | MAXAMPL : Maximum Amplitude | PPT : Predicted Pipe Time |
| CASEOD : Casing O.D. | MINAMPL : Minimum Amplitude | SRFTEMP : Surface Temperature |
| CASETHCK : Casing Thickness | MINATTN : Minimum Attenuation | TDEPTH : Total Depth |

Calibration Report

Database File chevron_romero_g03-29d_cbl.db
 Dataset Pathname Rig_12-473/Romero_G03-29D/run1/pass4
 Dataset Creation Wed Oct 22 08:30:17 2025

Gamma Ray Calibration Report

Type / Serial: Probe275dig / pr051003

SHOP CALIBRATION

Thu Oct 27 14:35:18 2005

| | | | | | |
|------------|-------------|--------|--------|-----|----------|
| | Counts/Sec. | Gain | Offset | Jig | Units |
| Background | 41.0 | | | | cps |
| Calibrator | 340.3 | | | | cps |
| | | 0.8720 | | | GAPI/cps |

PRIMARY VERIFICATION

00:00:00

| | | | | | |
|------------|-------|--|--|-------|------|
| Background | 33.2 | | | | cps |
| Calibrator | 288.5 | | | | cps |
| Difference | | | | 255.3 | GAPI |

BEFORE SURVEY VERIFICATION

00:00:00

| | | | | | |
|------------|-------|--|--|-------|------|
| Background | 34.4 | | | | cps |
| Calibrator | 292.8 | | | | cps |
| Difference | | | | 258.4 | GAPI |

| | | | |
|------------|-------|-------|------|
| Background | 33.6 | | cps |
| Calibrator | 289.8 | | cps |
| Difference | | 256.2 | GAPI |

Segmented Cement Bond Log Calibration Report

| | | | |
|------------------------------|---------|----|--|
| Serial Number: | 275 | | |
| Tool Model: | Probe | | |
| Calibration Casing Diameter: | 4.500 | in | |
| Calibration Depth: | 612.193 | ft | |

Master Calibration, performed Wed Oct 22 08:17:01 2025:


| | Raw (v) | | Calibrated (mv) | | Results | |
|-----|---------|-------|-----------------|--------|---------|--------|
| | Zero | Cal | Zero | Cal | Gain | Offset |
| 3' | 0.002 | 1.412 | 1.000 | 81.196 | 56.860 | 0.883 |
| CAL | | | | | | |
| 5' | 0.002 | 1.339 | 1.000 | 81.196 | 59.967 | 0.905 |
| SUM | | | | | | |
| S1 | | | | | | |
| S2 | | | | | | |
| S3 | | | | | | |
| S4 | | | | | | |
| S5 | | | | | | |
| S6 | | | | | | |
| S7 | | | | | | |
| S8 | | | | | | |

Internal Reference Calibration, performed (Not Performed):

| | Raw (v) | | Calibrated (v) | | Results | |
|-----|---------|-----|----------------|-----|---------|--------|
| | Zero | Cal | Zero | Cal | Gain | Offset |
| CAL | | | | | | |

Air Zero Calibration, performed Thu May 28 09:57:00 2020:

| | Raw (v) | | Calibrated (v) | | Results | |
|-----|---------|--|----------------|--|---------|--|
| | Zero | | Zero | | Offset | |
| 3' | 0.000 | | 0.000 | | 0.000 | |
| 5' | 0.000 | | 0.000 | | 0.000 | |
| SUM | | | | | | |
| S1 | | | | | | |
| S2 | | | | | | |
| S3 | | | | | | |
| S4 | | | | | | |
| S5 | | | | | | |
| S6 | | | | | | |
| S7 | | | | | | |
| S8 | | | | | | |

| Sensor | Offset (ft) | Schematic | Description | Length (ft) | O.D. (in) | Weight (lb) |
|--------|-------------|---|-------------|-------------|-----------|-------------|
| | |  | | | | |

| | | | | | | | |
|---------------------|-------|--|--|--|------|------|-------|
| | | | | CENT-BC275-0000 Probe 2.75" Bowspring Centralizer | 2.83 | 2.75 | 24.00 |
| WVF3FT | 11.77 | | | CBL-Probe (275) Probe 2.75" Dual Receiver Bond | 8.75 | 2.75 | 60.00 |
| WVF5FT | 10.77 | | | | | | |
| WVFSYNC HEADVOLT | 7.58 | | | | | | |
| CCL | 6.75 | | | | | | |
| GR | 5.38 | | | GR-Probe275dig (pr051003) Probe Digital Gamma CCL | 4.75 | 2.75 | 57.00 |
| | | | | CENT-BC275-0000 Probe 2.75" Bowspring Centralizer | 2.83 | 2.75 | 24.00 |

Dataset: chevron_romero_g03-29d_cbl.db: Rig_12-473/Romero_G03-29D/run1/pass4
 Total length: 19.17 ft
 Total weight: 165.00 lb
 O.D.: 2.75 in