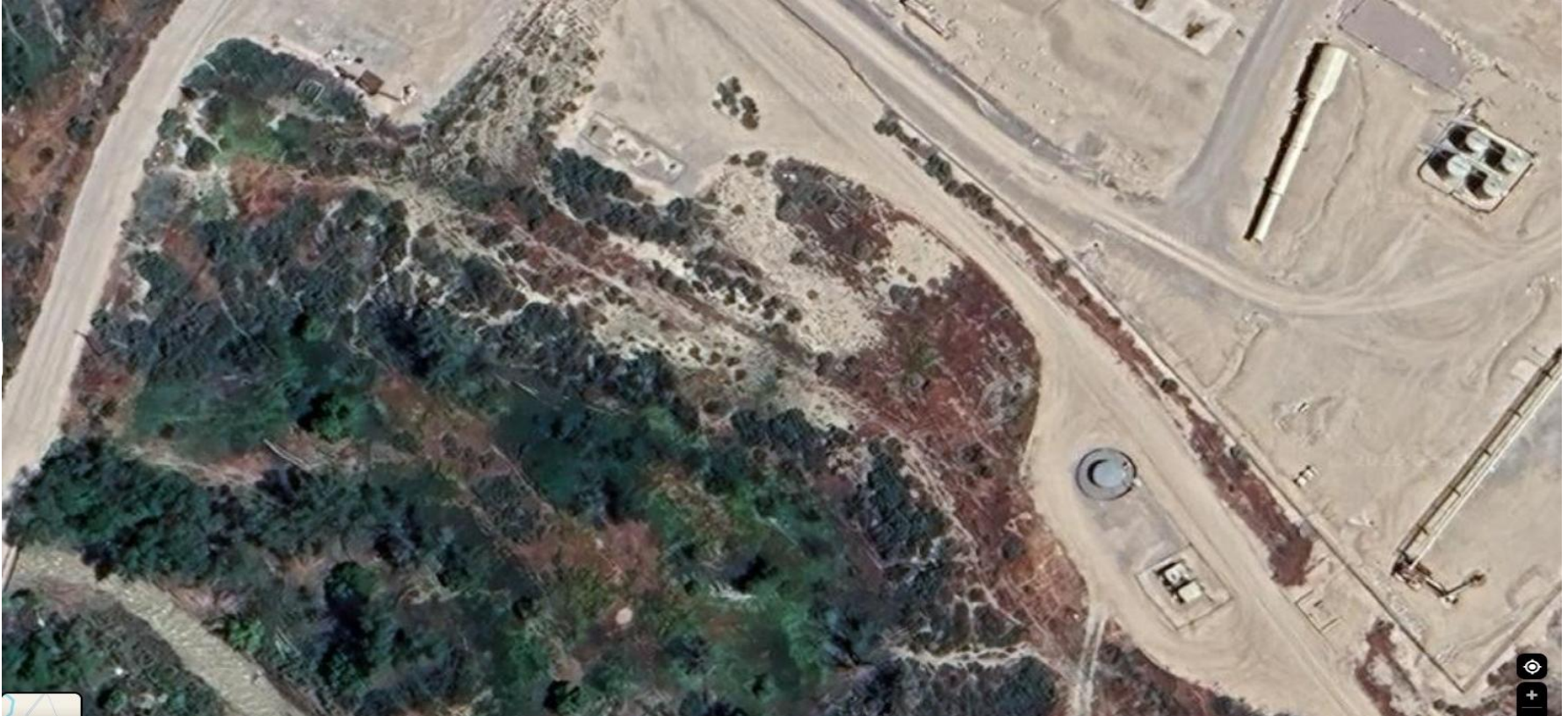


**Storm Water Management and Erosion control**  
**Location Name: TEP ROCKY MOUNTAIN LLC UNOCAL GM 31-33 Pad**  
**Location ID: 335364**



**Location Overview: Location is within High  
Priority/Density/NSO/Black Bear Habitat areas. Location is  
approximately 116 yards from Parachute Creek.  
Section/Township/Range: 33 6S96W**

**Storm water Management and Erosion control**  
**Location Name: TEP ROCKY MOUNTAIN LLC UNOCAL GM 31-33 Pad**  
**Location ID: 335364**

68° E  
Garfield County



**North West corner of location.**

169° S  
Garfield County



**North East corner of location.**

Garfield County



**South West corner of location.**

Garfield County



**South East corner of location.**