

Legend

Site Location

N

0 2,000 4,000 Feet

1 inch = 2,000 feet
1:24,000

Service Layer Credits: Sources: Esri, HERE, Garmin, Intermap, increment P Corp., GEBCO, USGS, FAO, NPS, NRCAN, GeoBase, IGN, Kadaster NL, Ordnance Survey, Esri Japan, METI, Esri China (Hong Kong), (c) OpenStreetMap contributors, and the GIS User Community

USGS The National Map: National Boundaries Dataset, 3DEP Elevation Program, Geographic Names Information System, National Hydrography Dataset, National Land Cover Database, National Structures Dataset, and National Transportation Dataset; USGS Global Ecosystems; U.S. Census Bureau TIGER/Line data; USFS Road Data; Natural Earth Data; U.S. Department of State Humanitarian

DATE:	July, 2023
DESIGNED BY:	J. Watts
DRAWN BY:	M. Kaczmarek



Tasman, Inc.
4725 Independence St.
Wheat Ridge, CO 80033




DCP Operating Co, LP - DJ Basin
Mewbourn Gas Plant
 NESE Sec. 36 - T4N-R66W
 Weld County, Colorado

Site Location Map

Figure
1




Legend

-  Monitoring Well (Collected via Trimble GPS)
-  Surface Water Sample Location
-  Injection Tank Location

Notes

All locations are approximate unless otherwise noted.

GPS - Global Positioning System

0 ft. 100 ft. 200 ft. 

DATE: July 14, 2025

DESIGNED BY: J. Watts

DRAWN BY: K. MacDonald

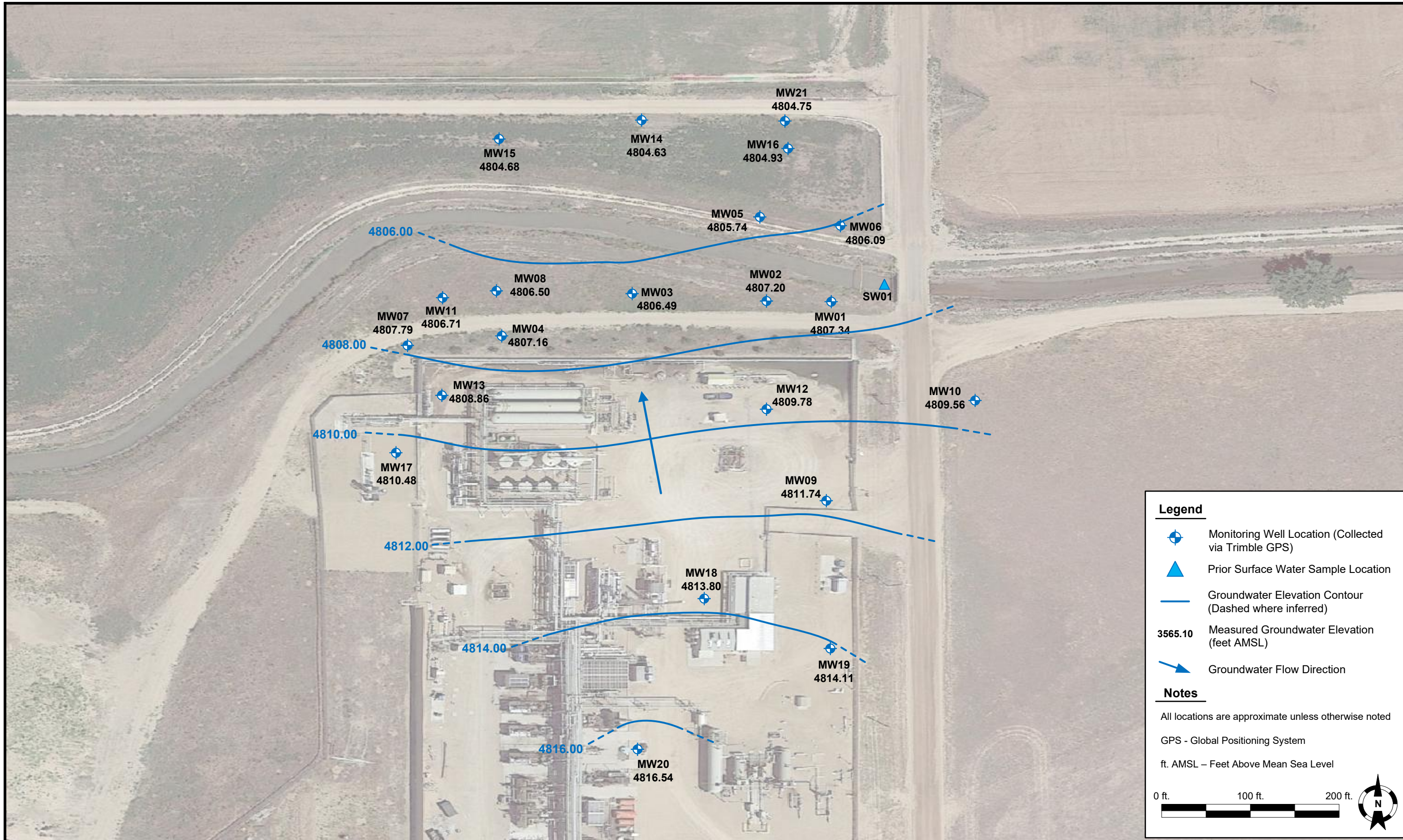


Tasman, Inc.
 4725 Independence St.
 Wheat Ridge, Colorado, 80033

**DCP Operating Co, LP – DJ Basin
 Mewbourn CND**
 NESE, Section 35, Township 4 North, Range 66 West
 Weld County, Colorado

Site Overview Map

FIGURE
 2



Legend

- Monitoring Well Location (Collected via Trimble GPS)
- Prior Surface Water Sample Location
- Groundwater Elevation Contour (Dashed where inferred)
- 3565.10** Measured Groundwater Elevation (feet AMSL)
- Groundwater Flow Direction

Notes

All locations are approximate unless otherwise noted

GPS - Global Positioning System

ft. AMSL – Feet Above Mean Sea Level

0 ft. 100 ft. 200 ft.

DATE: October 07, 2025

DESIGNED BY: B. Humphrey

DRAWN BY: J. Woffinden

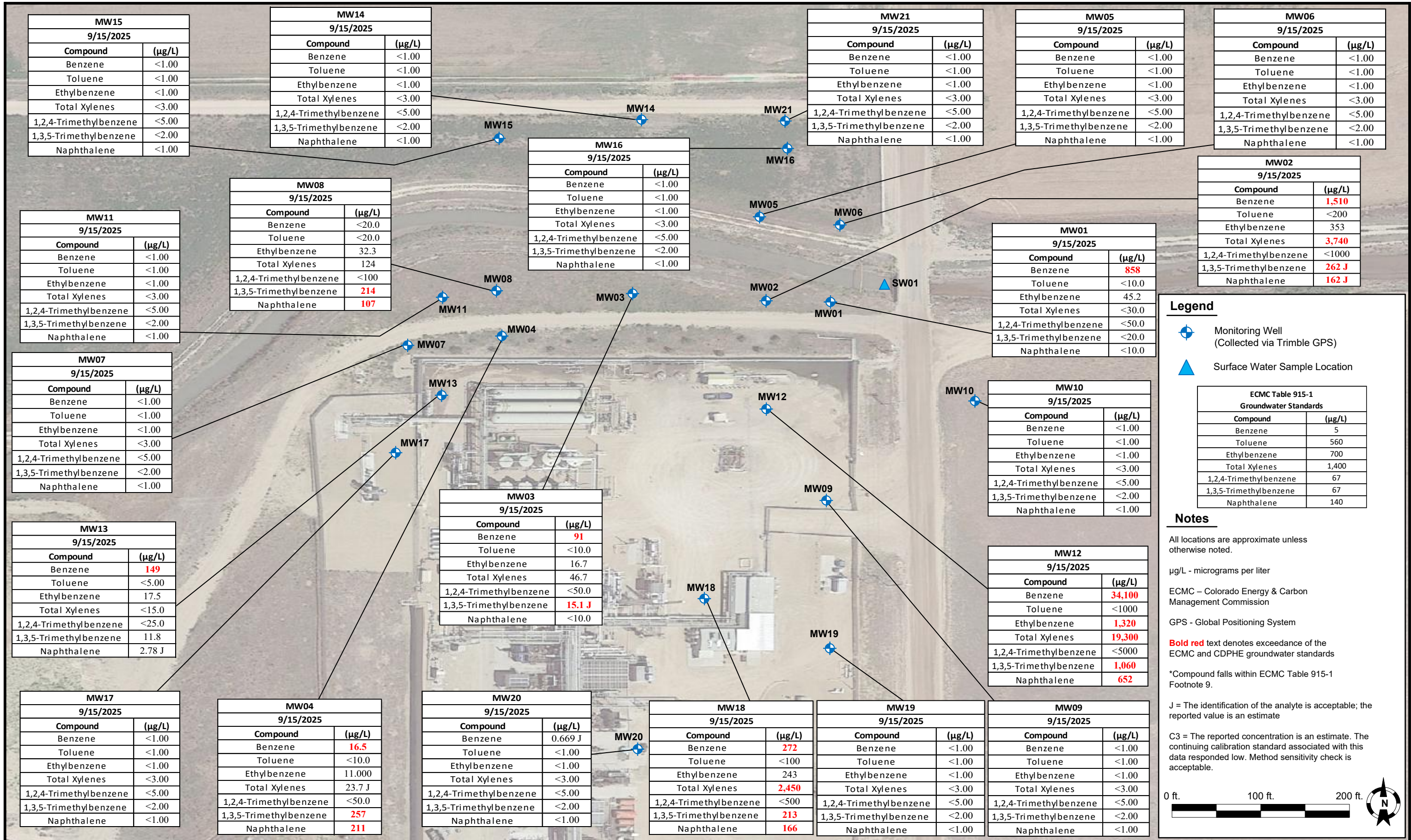


Tasman, Inc.
4725 Independence St.
Wheat Ridge, Colorado, 80033

DCP Operating Co, LP – DJ Basin
Mewbourn CND
NESE, Section 35, Township 4 North, Range 66 West
Weld County, Colorado

Groundwater Elevation Contour
Map
(09/15/2025)

FIGURE
3



Legend

- Monitoring Well (Collected via Trimble GPS)
- Surface Water Sample Location

Notes

All locations are approximate unless otherwise noted.

µg/L - micrograms per liter

ECMC – Colorado Energy & Carbon Management Commission

GPS - Global Positioning System

Bold red text denotes exceedance of the ECMC and CDPHE groundwater standards

*Compound falls within ECMC Table 915-1 Footnote 9.

J = The identification of the analyte is acceptable; the reported value is an estimate

C3 = The reported concentration is an estimate. The continuing calibration standard associated with this data responded low. Method sensitivity check is acceptable.

0 ft. 100 ft. 200 ft.

DATE: October 07, 2025

DESIGNED BY: J. Watts

DRAWN BY: J. Woffinden



Tasman, Inc.
4725 Independence St.
Wheat Ridge, Colorado, 80033

DCP Operating Co, LP – DJ Basin
Mewbourn CND
NESE, Section 35, Township 4 North, Range 66 West
Weld County, Colorado

Groundwater Analytical
Map
(09/15/2025)

FIGURE
4