

Figure 1

Site Location Map
 Tampa Compressor Station
 SWSW S31 T3N R63W
 Weld County, Colorado





DATE: November 2018
 DESIGNED BY: B. Humphrey
 DRAWN BY: D. Arnold



Tasman, Inc.
 4725 Independence St.
 Wheat Ridge, CO 80033

DCP Operating Company , LP
Tampa Compressor Station
 SWSW Section 31, Township 3 North, Range 63 West
 Weld County, Colorado

Site Map with
 Monitoring Well Locations

Figure
 2



DATE: September 2025

DESIGNED BY: J. Watts

DRAWN BY: J. Woffinden

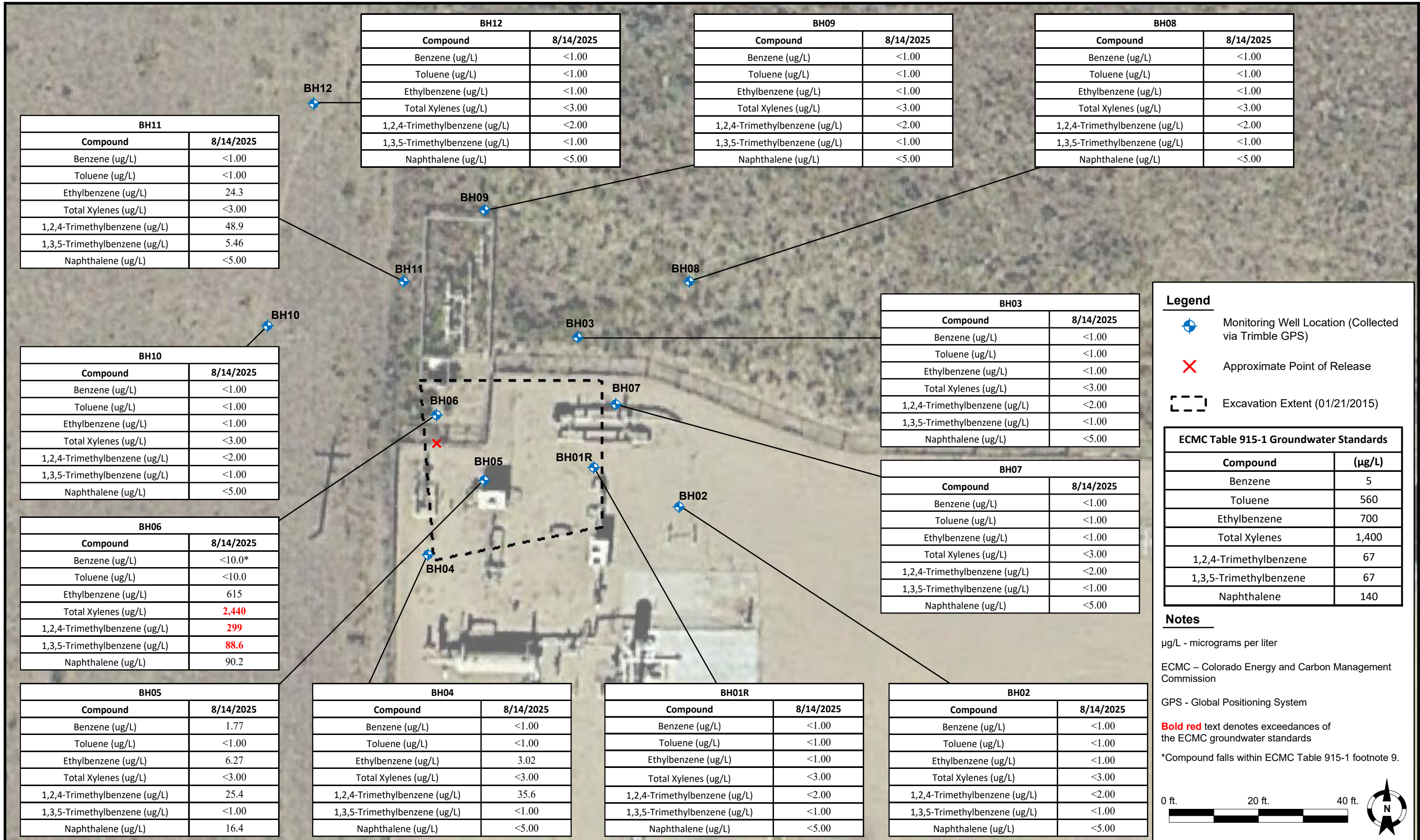


Tasman, Inc.
4725 Independence St.
Wheat Ridge, CO 80033

DCP Operating Company, LP
Tampa Compressor Station
SWSW Section 31, Township 3 North, Range 63 West
Weld County, Colorado

Groundwater Elevation
Contour Map
(August 14, 2025)

Figure
3



Legend

- Monitoring Well Location (Collected via Trimble GPS)
- Approximate Point of Release
- Excavation Extent (01/21/2015)

ECMC Table 915-1 Groundwater Standards	
Compound	(µg/L)
Benzene	5
Toluene	560
Ethylbenzene	700
Total Xylenes	1,400
1,2,4-Trimethylbenzene	67
1,3,5-Trimethylbenzene	67
Naphthalene	140

Notes

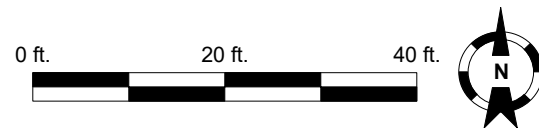
µg/L - micrograms per liter

ECMC – Colorado Energy and Carbon Management Commission

GPS - Global Positioning System

Bold red text denotes exceedances of the ECMC groundwater standards

*Compound falls within ECMC Table 915-1 footnote 9.



DATE: September 16, 2025

DESIGNED BY: J. Watts

DRAWN BY: K. MacDonald



Tasman, Inc.
4725 Independence St.
Wheat Ridge, CO 80033





DCP Operating Company, LP
Tampa Compressor Station
SWSW, Section 31, Township 3 North, Range 63 West
Weld County, Colorado

Groundwater Analytical
Map
(8/14/2025)

FIGURE
4




Legend

-  Existing Monitoring Well Location (Collected via Trimble GPS)
-  Proposed Monitoring Well Location
-  Approximate Point of Release
-  Excavation Extent (01/21/2015)


Notes

GPS - Global Positioning System

0 ft. 20 ft. 40 ft.



DATE:	June 16, 2025
DESIGNED BY:	J. Watts
DRAWN BY:	K. MacDonald



Tasman, Inc.
4725 Independence St.
Wheat Ridge, CO 80033

DCP Operating Company, LP
Tampa Compressor Station
SWSW, Section 31, Township 3 North, Range 63 West
Weld County, Colorado

Proposed Well Location Map

FIGURE
5