

EDITH ANN-62N68W/21NESE (473525): Equipment Removal

40.123111, -105.001647

NESE Sec. 21 T2N, R68W, 6th PM

Weld County, Colorado

Crestone Peak Resources (10633)



Equipment to be Removed		
Legend	Equipment On-Site	# Pieces of Equipment
1	Oil Tanks	1
2	Produced Water Tank	1
3	60" ECD	1
4	Separator	1
5	ECD	1

Legend

Site Investigation Points

- ✓ Visual Inspection Point
- ✗ Visual Inspection and Soil Sample

EDITH ANN-62N68W/21NESE (473525): Off-Location Flowline Decommission

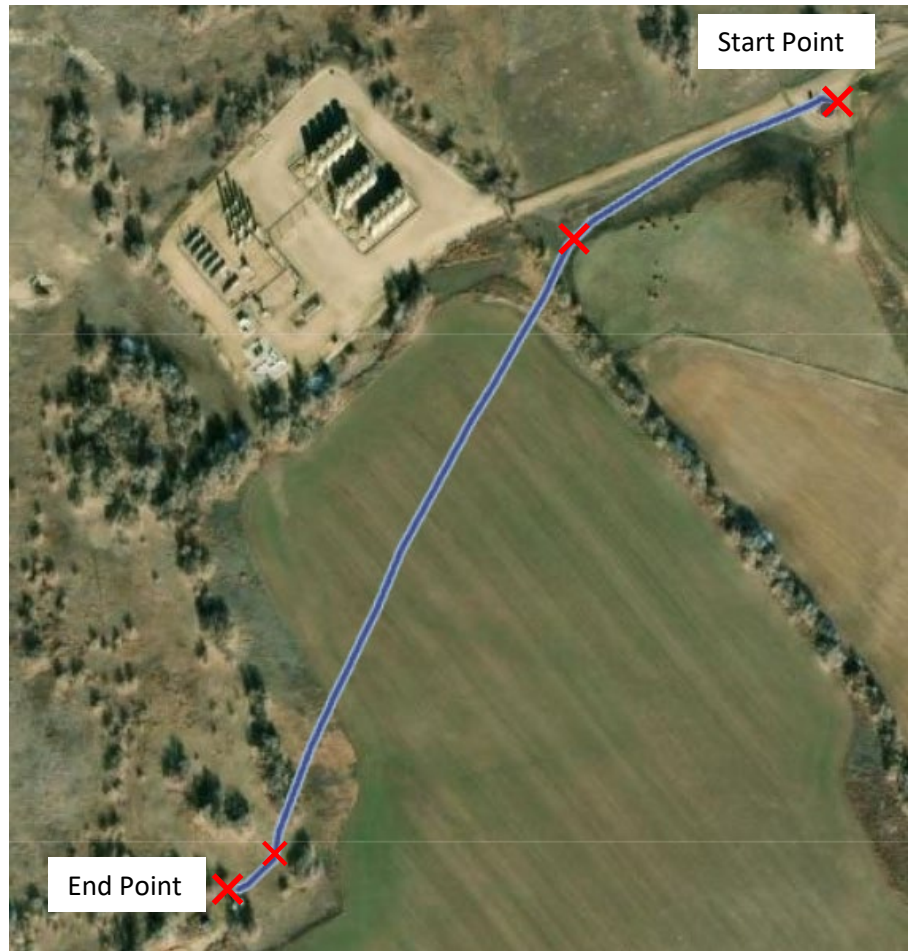
40.123111, -105.001647

NESE Sec. 21 T2N, R68W, 6th PM

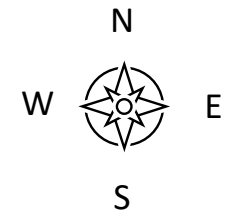
Weld County, Colorado

Crestone Peak Resources (10633)

Flowline Unique OperFeatID	Line Type	Start Location	Start Location Latitude/Longitude	End Location	End Location Latitude, Longitude (Cut Point)	Approx. Length to Decommission (ft)
Edith Ann 1-2 Offsite Sales	Natural Gas	Separator	40.123143, -105.001624	Sales Meter	40.11989, -105.004842	1565



Site Investigation Points
X Visual Inspection and Soil Sample



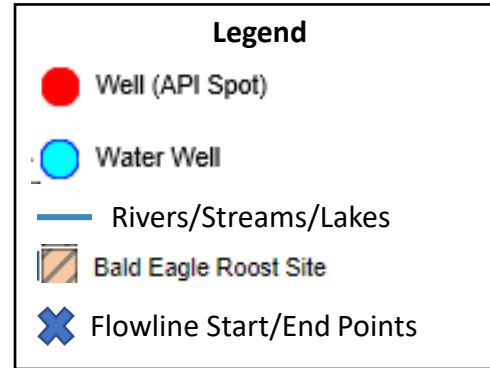
EDITH ANN-62N68W/21NESE (473525): ¼ Mile Buffer - Wildlife and Hydrology Map

40.123111, -105.001647

NESE Sec. 21 T2N, R68W, 6th PM

Weld County, Colorado

Crestone Peak Resources (10633)



Receptor	DWR Receipt (Permit)	Distance (ft)	Direction	Well Depth(ft)	Static Water Level (ft)
Geoexchange Loop Field	0051951A (91-GX)	980	NE	300	Not Recorded
Geothermal Loop	0491877 (366-G)	1045	NE	105	Not Recorded
Domestic Well	3623659 (276522-)	1050	NE	21	Not Recorded
Idaho Creek	N/A	1065	N	Surface	Surface

