

FREMONT ENVIRONMENTAL INC.

October 22, 2025

Mr. Daniel Peterson
Noble Energy Inc.
2115 117th Avenue
Greeley, CO 80634

Subject: **Wellhead and Flowline Closure Data Submittal**
Furrow USX AB 15-99HZ
API # 05-123-31249
SESE Sec. 15, T7N, R64W
Weld County, Colorado
Fremont Project No. C024-009
Facility ID #416066, Remediation #30076

Dear Mr. Peterson:

As you requested, Fremont Environmental Inc. (Fremont) personnel conducted Wellhead and Flowline Closure activities for the Noble Energy Inc. (Noble) Furrow USX AB 15-99HZ. Impacted soil was encountered during abandonment activities. Details of the Furrow USX AB 15-99HZ wellhead and flowline closure activities are documented in the attached Closure Report. Groundwater was not encountered during flowline abandonment activities.

Please contact me at (303) 956-8714 if you require any additional information. Fremont appreciates the opportunity to provide this service.

Sincerely,

FREMONT ENVIRONMENTAL INC.



Paul V. Henehan, P.E.
Senior Consultant

Attachments:

- Facility Closure Checklist
- Tables
- Figures
- Photos
- Laboratory Reports

1759 REDWING LANE, BROOMFIELD, CO 80020
(303) 956-8714 (DIRECT)

Wellhead Closure Checklist

COGCC Rule 911.a.(4) Environmental Site Closure Assessment Field Form

Additional attachments (optional):		Pit Closure		Tank Battery Closure	X	Flowline Closure		Partially Buried Vault Closure	
Site Name & COGCC Facility Number: Furrow USX T7N-R64W-S15 L02 Facility: 416214		Date: 01/19/2024 & 08/28/2025					Remediation Project #: 30076		
Associated Wells: Furrow USX AB 15-99HZ Facility ID: 416066 API: 05-123-31249		Age of Site: 2010					Number of Photos Attached: See Attached		
Location: (GPS coordinates of wellhead or southeastern most wellhead for multiple)						40.5683501, -104.5271027		Estimated Facility Size (acres): ~1 Acre	
General Condition of Site: (General observations regarding housekeeping, corrosion, waste management, etc.) No signs of impacts were noted at the wellhead									
USCS Soil Type: SW					Estimated Depth to Groundwater: N/A				
Hydrocarbon Impacted Soils / Spills: (Note estimated size and if impact appears to be surficial or extends to an unknown depth) None Observed									
Salt Crusted Soils or Impacted Vegetation: (Note estimated size and if impact appears to be surficial or extends to an unknown depth) None Observed									
Wellhead(s)									
Well API	05-123-31249								
Age	2010								
Condition of surface around wellhead	No Impacts Noted								
PID Readings	N/A								
Condition of subsurface (staining present)	No Impacts Noted								
PID Readings	High @ 5.8ppm WH Ewall 4ft								
Sample taken? Location/Sample ID#	Yes, See Attached								
Photo Number(s)	See Attached								
Other observations regarding wellheads:									
Summary									
Was impacted soil identified? No Yes - less than 10 cubic yards Yes - more than 10 cubic yards									
Total number of samples field screened: 10 Samples					Total number of samples collected: 10 Samples				
Highest PID Reading: High @ 5.8ppm (WH Ewall 4ft)					Total number of samples submitted to lab for analysis: 10 Samples				
If more than 10 cubic yards of impacted soil were observed:									
Vertical extent: N/A					Estimated spill volume: N/A				
Lateral extent: N/A					Volume of soil removed: N/A				
Is additional investigation required? N/A									
Was groundwater encountered during the investigation? No Yes - not impacted or in contact with impacted soils Yes - groundwater impacted and/or in contact with impacted soils									
Measured depth to groundwater: N/A					Was remedial groundwater removal conducted? Yes No				
Date Groundwater was encountered: N/A					Commencement date of removal: N/A				
Sheen on groundwater? Yes No					Volume of groundwater removed prior to sampling: N/A				
Free product observed? Yes No					Volume of groundwater removed post sampling: N/A				
Total number of samples collected: N/A					Total Volume of groundwater removed: N/A				
Total number of samples submitted to lab for analysis: N/A									

Flowline Closure Checklist

COGCC Rule 911.a.(4) Environmental Site Closure Assessment Field Form

Additional Attachments:		Tank Battery Closure	✓	Wellhead Closure		Pit Closure		Partially Buried Vault Closure	
Site Name & COGCC Facility Number: Furrow USX T7N-R64W-S15 L02 Facility: 416214		Date: 01/12/2024 & 08/27/2025				Remediation Project #: 30076			
Associated Wells: Furrow USX AB 15-99HZ Facility ID: 416066 API: 05-123-31249		Age of Site: 2010				Number of Photos Attached: See Attached			

Starting point: (GPS coordinates and descriptions) 40.5683527, -104.5270946

End point: (GPS coordinates and descriptions) 40.5663081, -104.5267533

USCS Soil Type: SW Estimated Depth to Groundwater: N/A

Hydrocarbon Impacted Soils / Spills: (Note estimated size and if impact appears to be surficial or extends to an unknown depth)
Impacts observed at sample location 99FL05 3Ft.

Salt Crusted Soils or Impacted Vegetation: (Note estimated size and if impact appears to be surficial or extends to an unknown depth)
None observed

Flowlines

Flowline type	Multi Phase							
Depth	Roughly 3-4ft							
Age	2010							
Length	761ft							
Construction Material	BLK Non-ACM TGF 3" Steel							
Were flowlines pulled?	Abandoned-in-Place							
Visual Integrity of lines	No Damage							
Visual impacts if trenched	N/A							
PID Readings if trenched	N/A							
Sample taken? Location/Sample ID#	Yes, See Attached							
Photo Number(s)	Photo 1A-1B, 2A-2E & 3A-3F							

Other observations regarding on loction flowlines:

Summary

Was impacted soil identified?		No	Yes - less than 10 cubic yards	Yes - more than 10 cubic yards
Total number of samples field screened: 5 samples		Total number of samples collected: 5 samples		
Highest PID Reading: High @ 7.1ppm (99FL01 @5.0')		Total number of samples submitted to lab for analysis: 5 Samples		
If more than 10 cubic yards of impacted soil were observed:				
Vertical extent: Unknown		Estimated spill volume: Unknown		
Lateral extent: Unknown		Volume of soil removed: Impacts Left in Place		
Is additional investigation required? Additional Investigation Required				
Was groundwater encountered during the investigation?				
No		Yes - not impacted or in contact with impacted soils		Yes - groundwater impacted and/or in contact with impacted soils
Measured depth to groundwater: N/A		Was remedial groundwater removal conducted? Yes No		
Date Groundwater was encountered: N/A		Commencement date of removal: N/A		
Sheen on groundwater? Yes No		Volume of groundwater removed prior to sampling: N/A		
Free product observed? Yes No		Volume of groundwater removed post sampling: N/A		
Total number of samples collected: N/A		Total Volume of groundwater removed: N/A		
Total number of samples submitted to lab for analysis: N/A				

TABLE 1
FIELD DATA SUMMARY TABLE
NOBLE 100322
FURROW USX AB 15-99HZ, WELD COUNTY, COLORADO
REM # 30076

Sample ID	Sample Date	Depth (ft)	GPS Data Latitude/Longitude		PDOP Value	VOC Concentration (ppm)
99FL03 3ft	8/27/2025	3.0 Ft	40.5676077	-104.5269885	0.8	0.0
99FL04 3ft	8/27/2025	3.0 Ft	40.5669138	-104.5268854	0.8	1.9
99FL05 3ft	8/27/2025	3.0 Ft	40.566312	-104.5267918	0.8	4.4
99FL02@4.0'	1/12/2024	4.0 Ft	40.5663081	-104.5267533	-	0.0
PJPN01@4.0'	1/19/2024	4.0 Ft	40.5682096	-104.5271364	-	0.0
PJPS01@4.0'	1/19/2024	4.0 Ft	40.5681865	-104.5271359	-	0.0
PJPE01@4.0'	1/19/2024	4.0 Ft	40.5681964	-104.5271136	-	0.0
PJPW01@4.0'	1/19/2024	4.0 Ft	40.5681966	-104.5271550	-	0.0
WH Swall4ft	8/28/2025	4.0 Ft	40.5683291	-104.5271024	0.8	0.0
WH Ewall 4ft	8/28/2025	4.0 Ft	40.5683537	-104.5270635	0.8	5.8
WH Nwall 4ft	8/28/2025	4.0 Ft	40.5683789	-104.5271029	0.8	5.2
WH Wwall 4ft	8/28/2025	4.0 Ft	40.5683548	-104.5271394	0.8	0.0
99FL01@5.0'	1/12/2024	5.0 Ft	40.5683527	-104.5270946	-	7.1
PJPB01@5.0'	1/19/2024	5.0 Ft	40.5681968	-104.5271358	-	0.0
WHFS01 6ft	8/28/2025	6.0 Ft	40.5683501	-104.5271027	0.8	0.0

TABLE 1
FIELD DATA SUMMARY TABLE
NOBLE 100322
FURROW USX AB 15-99HZ, WELD COUNTY, COLORADO
REM # 30076

Sample ID	Sample Date	Depth (ft)	GPS Data		PDOP Value	VOC Concentration (ppm)
			Latitude	Longitude		
BKG01	1/19/2024	0.5 Ft, 4.0 Ft, 5.0 Ft	40.5667636	-104.5262640	-	8.0
BKG02	1/19/2024	0.5 Ft, 4.0 Ft, 5.0 Ft	40.5666866	-104.5265116	-	0.0
BKG03	1/19/2024	0.5 Ft, 4.0 Ft, 5.0 Ft	40.5666232	-104.5266901	-	0.0
BKG04	1/19/2024	0.5 Ft, 4.0 Ft, 5.0 Ft	40.5665236	-104.5269812	-	0.0
BKG05	1/19/2024	0.5 Ft, 4.0 Ft, 5.0 Ft	40.5664732	-104.5271453	-	0.0
BKG6	8/27/2025	3.0 Ft, 6.0 Ft	40.5676642	-104.5275402	0.8	0.0
BKG7	8/27/2025	3.0 Ft, 6.0 Ft	40.5673212	-104.5274398	0.8	0.0
BKG 8	8/27/2025	3.0 Ft, 6.0 Ft	40.5669784	-104.5273259	0.8	0.0
BKG9	8/27/2025	3.0 Ft, 6.0 Ft	40.5674613	-104.5266623	0.8	0.0
BKG10	8/27/2025	3.0 Ft, 6.0 Ft	40.5671811	-104.5266346	0.7	0.0

1. Global Positioning System (GPS) data is provided in decimal degrees using North American Datum (NAD) 83 UTMZone 13 North.

2. Volatile organic compound (VOC) concentrations are measured in the field using a photoionization detector (PID).

PDOP = Position Dilution of Precision

ppm = Parts per million

in. = Inches

ft. = Feet

bgs = Below ground surface

TABLE 2
SUMMARY OF VOLATILE ORGANIC SOIL CHEMISTRY DATA
NOBLE 100322
FURROW USX AB 15-99HZ, WELD COUNTY, COLORADO
REM # 30076

Sample ID	Sample Date	Depth (ft)	Benzene (mg/kg)	Toluene (mg/kg)	Ethyl-Benzene (mg/kg)	Xylenes (mg/kg)	1,2,4-Trimethyl-Benzene (mg/kg)	1,3,5-Trimethyl-Benzene (mg/kg)	Naphthalene (mg/kg)	TPH (mg/kg)	TPH GRO (mg/kg)	TPH DRO (mg/kg)	TPH ORO (mg/kg)
ECMC Table 915-1 Limits (Residential SSL)			1.2	490	5.8	58	30	27	2	500	500**		
ECMC Table 915-1 Limits (Protection of Groundwater SSL)			0.0026	0.69	0.78	9.9	0.0081	0.0087	0.0038	500	500**		
99FL03 3Ft	8/27/2025	3.0 Ft	<0.002	<0.002	<0.002	<0.002	<0.002	<0.002	<0.002	<500	<0.208	<26.0	<104
99FL04 3Ft	8/27/2025	3.0 Ft	<0.002	<0.002	<0.002	<0.002	<0.002	<0.002	<0.002	<500	<0.213	<26.6	<106
99FL05 3Ft	8/27/2025	3.0 Ft	0.004	<0.002	<0.002	<0.002	<0.002	<0.002	<0.002	<500	<0.232	<29.0	<116
99FL02@4.0'	1/12/2024	4.0 Ft	<0.0020	<0.0050	<0.0050	<0.010	<0.0050	<0.0050	<0.0038	<500	<0.50	<50	<50
PJPN01@4.0'	1/19/2024	4.0 Ft	<0.0020	<0.0050	<0.0050	<0.010	<0.0050	<0.0050	<0.0038	<500	<0.50	<50	<50
WH Swall4ft	8/28/2025	4.0 Ft	<0.002	<0.002	<0.002	<0.002	<0.002	<0.002	<0.002	<500	<216	<27.1	<108
WH Ewall 4ft	8/28/2025	4.0 Ft	<0.002	<0.002	<0.002	<0.002	<0.002	<0.002	<0.002	<500	<0.214	<26.8	<107
WH Nwall 4ft	8/28/2025	4.0 Ft	<0.002	<0.002	<0.002	<0.002	<0.002	<0.002	<0.002	<500	<0.223	<27.9	<122
WH Wwall 4ft	8/28/2025	4.0 Ft	<0.002	<0.002	<0.002	<0.002	<0.002	<0.002	<0.002	<500	<0.224	<28.0	<112
99FL01@5.0'	1/12/2024	5.0 Ft	<0.0020	<0.0050	<0.0050	<0.010	<0.0050	<0.0050	<0.0038	<500	<0.50	67	<50
PJPB01@5.0'	1/19/2024	5.0 Ft	<0.0020	<0.0050	<0.0050	<0.010	<0.0050	<0.0050	<0.0038	<500	<0.50	<50	<50
WHFS01 6ft	8/28/2025	6.0 Ft	<0.002	<0.002	<0.002	<0.002	<0.002	<0.002	<0.002	<500	<0.209	59.6	253

1. Bold values exceed the ECMC Table 915-1 limit(s)
 2. Red & blue highlighted soil analytical values indicate an exceedance of the referenced soil screening level (SSL)
 3. * Indicates laboratory minimum detection limit in excess of SSL
 4. ** Summation of GRO+DRO+ORO must be less than 500 mg/kg
- (<) = Analytical result is less than the indicated laboratory reporting limit.
TPH-GRO = Total petroleum hydrocarbons - gasoline range organics
TPH-DRO = Total petroleum hydrocarbons - diesel range organics
TPH-ORO = Total petroleum hydrocarbons - oil range organics
mg/kg = Milligrams per kilogram
ft. = Feet
bgs = Below ground surface
NA - Not analyzed

TABLE 3
SUMMARY OF POLYCYCLIC AROMATIC HYDROCARBON SOIL CHEMISTRY DATA
NOBLE 100322
FURROW USX AB 15-99HZ, WELD COUNTY, COLORADO
REM # 30076

Sample ID	Sample Date	Depth (ft)	Acenaphthene (mg/kg)	Anthracene (mg/kg)	Benzo (a) Anthracene (mg/kg)	Benzo (a) Pyrene (mg/kg)	Benzo (b) Fluoranthene (mg/kg)	Benzo (k) Fluoranthene (mg/kg)	Chrysene (mg/kg)	Dibenzo (a,h) Anthracene (mg/kg)	Fluoranthene (mg/kg)	Fluorene (mg/kg)	Indeno (1,2,3-cd) Pyrene (mg/kg)	Pyrene (mg/kg)	1-Methyl - Naphthalene (mg/kg)	2-Methyl - Naphthalene (mg/kg)
ECMC Table 915-1 Limits (Residential SSL)			360	1800	1.1	0.11	1.1	11	110	0.11	240	240	1.1	180	18	24
ECMC Table 915-1 Limits (Protection of Groundwater SSL)			0.55	5.8	0.011	0.24	0.3	2.9	9	0.096	8.9	0.54	0.98	1.3	0.006	0.019
99FL03 3Ft	8/27/2025	3.0 Ft	<0.021	<0.021	<0.005	<0.021	<0.021	<0.021	<0.021	<0.021	<0.021	<0.021	<0.021	<0.021	<0.002	<0.002
99FL04 3Ft	8/27/2025	3.0 Ft	<0.021	<0.021	<0.005	<0.021	<0.021	<0.021	<0.021	<0.021	<0.021	<0.021	<0.021	<0.021	<0.002	<0.002
99FL05 3Ft	8/27/2025	3.0 Ft	<0.023	<0.023	<0.006	<0.023	<0.023	<0.023	<0.023	<0.023	<0.023	<0.023	<0.023	<0.023	<0.002	<0.002
99FL02@4.0'	1/12/2024	4.0 Ft	<0.00500	<0.00500	<0.00500	<0.00500	<0.00500	<0.00500	<0.00500	<0.00500	<0.00500	<0.00500	<0.00500	<0.00500	<0.00500	<0.00500
PJPN01@4.0'	1/19/2024	4.0 Ft	<0.00500	<0.00500	<0.00500	<0.00500	<0.00500	<0.00500	<0.00500	<0.00500	<0.00500	<0.00500	<0.00500	<0.00500	<0.00500	<0.00500
WH Swall4ft	8/28/2025	4.0 Ft	<0.022	<0.022	<0.005	<0.022	<0.022	<0.022	<0.022	<0.022	<0.022	<0.022	<0.022	<0.022	<0.002	<0.002
WH Ewall 4ft	8/28/2025	4.0 Ft	<0.021	<0.021	<0.005	<0.021	<0.021	<0.021	<0.021	<0.021	<0.021	<0.021	<0.021	<0.021	<0.002	<0.002
WH Nwall 4ft	8/28/2025	4.0 Ft	<0.022	<0.022	<0.006	<0.022	<0.022	<0.022	<0.022	<0.022	<0.022	<0.022	<0.022	<0.022	<0.002	<0.002
WH Wwall 4ft	8/28/2025	4.0 Ft	<0.022	<0.022	<0.006	<0.022	<0.022	<0.022	<0.022	<0.022	<0.022	<0.022	<0.022	<0.022	<0.002	<0.002
99FL01@5.0'	1/12/2024	5.0 Ft	<0.00500	<0.00500	0.00646	0.0288	0.0359	0.00851	0.0231	0.00507	0.0547	<0.00500	0.0234	0.0694	<0.00500	<0.00500
PJPB01@5.0'	1/19/2024	5.0 Ft	<0.00500	<0.00500	<0.00500	<0.00500	<0.00500	<0.00500	<0.00500	<0.00500	<0.00500	<0.00500	<0.00500	<0.00500	<0.00500	<0.00500
WHFS01 6ft	8/28/2025	6.0 Ft	<0.021	<0.021	<0.005	<0.021	<0.021	<0.021	<0.021	<0.021	<0.021	<0.021	<0.021	<0.021	<0.002	<0.002

1. Bold values exceed the ECMC Table 915-1 limit(s)
 2. Red & blue highlighted soil analytical values indicate an exceedance of the referenced soil screening level (SSL)
 3. * Indicates laboratory minimum detection limit in excess of SSL
 4. ** Summation of GRO+DRO+ORO must be less than 500 mg/kg
- (<) = Analytical result is less than the indicated laboratory reporting limit.
TPH-GRO = Total petroleum hydrocarbons - gasoline range organics
TPH-DRO = Total petroleum hydrocarbons - diesel range organics
TPH-ORO = Total petroleum hydrocarbons - oil range organics
mg/kg = Milligrams per kilogram
ft. = Feet
bgs = Below ground surface
NA - Not analyzed

TABLE 4
SUMMARY OF SOIL SUITABILITY FOR RECLAMATION
NOBLE 100322
FURROW USX AB 15-99HZ, WELD COUNTY, COLORADO
REM # 30076

Sample ID	Sample Date	Depth (ft)	pH (Standard Units)	EC (mmhos/cm)	SAR (Standard Units)	Boron (mg/L)
ECMC Table 915-1 Soil Suitability Limits			6 - 8.3	4	6	2
99FL03 3Ft	8/27/2025	3.0 Ft	7.82	0.178	0.192	0.132
99FL04 3Ft	8/27/2025	3.0 Ft	8.60	1.01	10.8	0.703
99FL05 3Ft	8/27/2025	3.0 Ft	8.12	0.357	0.510	0.259
99FL02@4.0'	1/12/2024	4.0 Ft	8.66	0.116	0.191	<2.00
PJPN01@4.0'	1/19/2024	4.0 Ft	8.97	0.120	0.132	<2.00
WH Swall4ft	8/28/2025	4.0 Ft	8.35	0.194	0.225	0.118
WH Ewall 4ft	8/28/2025	4.0 Ft	8.29	0.242	0.133	<0.107
WH Nwall 4ft	8/28/2025	4.0 Ft	8.34	0.181	0.602	<0.111
WH Wwall 4ft	8/28/2025	4.0 Ft	8.39	0.238	1.94	0.161
99FL01@5.0'	1/12/2024	5.0 Ft	8.76	0.117	0.161	<2.00
PJPB01@5.0'	1/19/2024	5.0 Ft	8.99	0.166	0.374	<2.00
WHFS01 6ft	8/28/2025	6.0 Ft	8.23	0.406	0.453	0.158
BKG01@6.0"	1/19/2024	0.5 Ft	7.06	0.0367	0.0231	<2.00
BKG02@6.0"	1/19/2024	0.5 Ft	7.12	0.0334	0.0286	<2.00
BKG03@6.0"	1/19/2024	0.5 Ft	6.23	0.0480	0.0351	<2.00
BKG04@6.0"	1/19/2024	0.5 Ft	8.77	0.0556	0.0501	<2.00
BKG05@6.0"	1/19/2024	0.5 Ft	7.56	0.0428	0.142	<2.00
BKG6 3Ft	8/27/2025	3.0 Ft	7.45	0.0859	0.146	0.183
BKG7 3Ft	8/27/2025	3.0 Ft	8.19	0.507	1.98	0.462
BKG8 3Ft	8/27/2025	3.0 Ft	7.81	0.174	1.77	0.483
BKG9 3Ft	8/27/2025	3.0 Ft	8.18	0.299	0.670	0.281
BKG10 3Ft	8/27/2025	3.0 Ft	8.08	0.231	0.0937	0.268

TABLE 4
SUMMARY OF SOIL SUITABILITY FOR RECLAMATION
NOBLE 100322
FURROW USX AB 15-99HZ, WELD COUNTY, COLORADO
REM # 30076

Sample ID	Sample Date	Depth (ft)	pH (Standard Units)	EC (mmhos/cm)	SAR (Standard Units)	Boron (mg/L)
ECMC Table 915-1 Soil Suitability Limits			6 - 8.3	4	6	2
BKG01@4.0'	1/19/2024	4.0 Ft	7.90	0.0673	0.130	<2.00
BKG02@4.0'	1/19/2024	4.0 Ft	9.27	0.164	0.815	<2.00
BKG03@4.0'	1/19/2024	4.0 Ft	8.73	0.621	4.32	<2.00
BKG04@4.0'	1/19/2024	4.0 Ft	8.82	0.0892	0.0519	<2.00
BKG05@4.0'	1/19/2024	4.0 Ft	9.48	0.375	0.845	<2.00
BKG01@5.0'	1/19/2024	5.0 Ft	8.15	0.262	1.35	<2.00
BKG02@5.0'	1/19/2024	5.0 Ft	8.68	0.126	0.741	<2.00
BKG03@5.0'	1/19/2024	5.0 Ft	9.16	0.458	5.84	<2.00
BKG04@5.0'	1/19/2024	5.0 Ft	8.91	0.0854	0.0909	<2.00
BKG05@5.0'	1/19/2024	5.0 Ft	8.91	0.997	6.33	<2.00
BKG6 6Ft	8/27/2025	6.0 Ft	8.35	0.228	1.52	0.158
BKG7 6Ft	8/27/2025	6.0 Ft	8.08	1.18	2.33	0.775
BKG8 6Ft	8/27/2025	6.0 Ft	7.80	1.35	3.34	0.391
BKG9 6Ft	8/27/2025	6.0 Ft	8.22	7.00	15.7	2.94
BKG10 6Ft	8/27/2025	6.0 Ft	8.69	0.195	0.923	0.178
Maximum Background Concentration			9.48	7.00	15.7	2.94

1. **Bold** faced values exceed the ECMC Table 915-1 limit(s), but are within background concentrations.

2. **Red** faced values exceed the ECMC Table 915-1 limit(s) and native background concentrations.

3. Brown highlighted soil analytical values indicate a regulatory exceedance.

NA - Not analyzed/Not applicable

TABLE 5
SUMMARY OF METALS IN SOIL CHEMISTRY DATA
NOBLE 100322
FURROW USX AB 15-99HZ, WELD COUNTY, COLORADO
REM # 30076

Sample ID	Sample Date	Depth (ft)	Arsenic (mg/kg)	Barium (mg/kg)	Cadmium (mg/kg)	Chromium (VI) (mg/kg)	Copper (mg/kg)	Lead (mg/kg)	Nickel (mg/kg)	Selenium (mg/kg)	Silver (mg/kg)	Zinc (mg/kg)
ECMC Table 915-1 Limits (Residential SSL)			0.68	15000	71	0.3	3100	400	1500	390	390	23000
ECMC Table 915-1 Limits (Protection of Groundwater SSL)			0.29	82	0.38	0.00067	46	14	26	0.26	0.8	370
99FL03 3Ft	8/27/2025	3.0 Ft	5.09	85.3	<0.262	<0.16	<31.8	<9.67	<18.0	<0.170	<0.552	<255
99FL04 3Ft	8/27/2025	3.0 Ft	4.75	163	0.293	<0.17	<32.9	11.6	<18.6	0.458	<0.572	<264
99FL05 3Ft	8/27/2025	3.0 Ft	3.63	127	<0.299	<0.18	<36.2	<11.0	<20.5	<0.194	<0.630	<292
99FL02@4.0'	1/12/2024	4.0 Ft	2.34	85.1	<0.200	<0.30	4.63	8.12	3.01	<0.260	0.0395	18.8
PJPN01@4.0'	1/19/2024	4.0 Ft	2.43	27.5	<0.200	<0.30	2.46	4.12	2.79	<0.260	<0.0200	10.2
WH Swall4ft	8/28/2025	4.0 Ft	3.12	66.4	<0.286	<0.17	<34.6	<10.5	<19.6	<0.185	<0.602	<278
WH Ewall 4ft	8/28/2025	4.0 Ft	3.35	<61.0	<0.283	<0.17	<34.2	<10.4	<19.3	<0.183	<0.595	<275
WH Nwall 4ft	8/28/2025	4.0 Ft	2.25	729	<0.274	<0.17	<33.2	<10.1	<18.7	0.188	<0.577	<267
WH Wwall 4ft	8/28/2025	4.0 Ft	2.55	<61.6	<0.286	<0.17	<34.6	<10.5	<19.5	<0.185	<0.601	<278
99FL01@5.0'	1/12/2024	5.0 Ft	2.42	207	<0.200	<0.30	3.63	4.06	2.91	<0.260	<0.0200	10.6
PJPB01@5.0'	1/19/2024	5.0 Ft	2.35	45.2	<0.200	<0.30	2.90	5.45	2.89	<0.260	<0.0200	11.6
WHFS01 6ft	8/28/2025	6.0 Ft	2.24	566	<0.267	<0.16	<32.3	<9.84	<18.3	<0.173	<0.562	<260
BKG01@6.0"	1/19/2024	0.5 Ft	1.63	39.4	<0.200	<0.30	2.73	4.97	2.48	<0.260	<0.0200	11.3
BKG02@6.0"	1/19/2024	0.5 Ft	2.52	46.2	0.259	<0.30	4.19	9.08	3.41	<0.260	0.0330	16.5
BKG03@6.0"	1/19/2024	0.5 Ft	1.91	26.6	<0.200	<0.30	3.58	6.43	2.88	<0.260	0.0246	13.6
BKG04@6.0"	1/19/2024	0.5 Ft	3.69	77.4	0.274	<0.30	4.97	8.79	5.66	<0.260	0.0362	19.7
BKG05@6.0"	1/19/2024	0.5 Ft	2.81	51.5	0.233	<0.30	4.40	7.86	4.54	<0.260	0.0406	16.7
BKG6 3Ft	8/27/2025	3.0 Ft	4.39	77.1	<0.261	<0.16	<31.6	<9.62	<17.9	<0.169	<0.550	<254
BKG7 3Ft	8/27/2025	3.0 Ft	3.95	163	<0.303	<0.17	<36.7	12.3	<20.7	<0.196	<0.638	<295
BKG8 3Ft	8/27/2025	3.0 Ft	4.68	140	0.356	<0.17	<35.4	16.0	<20.0	<0.189	<0.616	<285
BKG9 3Ft	8/27/2025	3.0 Ft	5.36	119	<0.267	<0.16	<32.4	<9.85	<18.3	<0.173	<0.563	<260
BKG10 3Ft	8/27/2025	3.0 Ft	3.46	80.8	<0.274	<0.16	<33.2	<10.1	<18.8	<0.178	<0.578	<267
BKG01@4.0'	1/19/2024	4.0 Ft	6.82	90.5	0.573	<0.30	9.49	16.5	6.38	0.471	0.0852	24.5
BKG02@4.0'	1/19/2024	4.0 Ft	3.60	54.7	0.262	<0.30	6.59	10.5	6.15	<0.260	0.0436	27.7
BKG03@4.0'	1/19/2024	4.0 Ft	6.21	101	0.409	<0.30	9.31	15.2	6.92	0.388	0.0451	31.5
BKG04@4.0'	1/19/2024	4.0 Ft	2.81	63.1	<0.200	<0.30	3.47	4.94	3.44	<0.260	0.0246	12.1
BKG05@4.0'	1/19/2024	4.0 Ft	3.17	48.4	<0.200	<0.30	3.68	5.30	3.77	<0.260	<0.0200	12.9
BKG01@5.0'	1/19/2024	5.0 Ft	5.36	108	0.749	<0.30	6.29	16.0	7.79	0.555	0.103	19.2
BKG02@5.0'	1/19/2024	5.0 Ft	3.53	58.0	0.274	<0.30	6.05	9.80	4.04	<0.260	0.0423	21.0

TABLE 5
SUMMARY OF METALS IN SOIL CHEMISTRY DATA
NOBLE 100322
FURROW USX AB 15-99HZ, WELD COUNTY, COLORADO
REM # 30076

Sample ID	Sample Date	Depth (ft)	Arsenic (mg/kg)	Barium (mg/kg)	Cadmium (mg/kg)	Chromium (VI) (mg/kg)	Copper (mg/kg)	Lead (mg/kg)	Nickel (mg/kg)	Selenium (mg/kg)	Silver (mg/kg)	Zinc (mg/kg)
ECMC Table 915-1 Limits (Residential SSL)			0.68	15000	71	0.3	3100	400	1500	390	390	23000
ECMC Table 915-1 Limits (Protection of Groundwater SSL)			0.29	82	0.38	0.00067	46	14	26	0.26	0.8	370
BKG03@5.0'	1/19/2024	5.0 Ft	2.25	86.8	0.287	<0.30	11.4	13.7	4.76	<0.260	0.0586	20.7
BKG04@5.0'	1/19/2024	5.0 Ft	2.19	174	<0.200	<0.30	2.72	4.45	3.00	<0.260	<0.0200	11.5
BKG05@5.0'	1/19/2024	5.0 Ft	3.24	65.4	0.202	<0.30	3.63	5.51	3.80	0.328	0.0265	13.4
99BKG06@5.0'	1/12/2024	5.0 Ft	2.50	38.6	<2.00	<0.30	2.75	4.89	3.18	<0.260	<0.0200	12.2
BKG6 6Ft	8/27/2025	6.0 Ft	4.51	85.3	<0.285	<0.17	<34.5	11.8	<19.5	<0.185	<0.600	<278
BKG7 6Ft	8/27/2025	6.0 Ft	5.23	96.0	0.328	<0.18	<36.1	18.0	<20.4	<0.193	<0.628	<290
BKG8 6Ft	8/27/2025	6.0 Ft	4.27	<61.7	<0.286	<0.17	<34.6	11.2	<19.6	0.227	<0.602	<278
BKG9 6Ft	8/27/2025	6.0 Ft	3.91	68.2	<0.293	<0.17	<35.5	15.5	<20.1	0.437	<0.617	<285
BKG10 6Ft	8/27/2025	6.0 Ft	2.81	<59.4	<0.275	<0.16	<33.3	<10.1	<18.8	<0.178	<0.579	<268
1.25x Maximum Background Concentration			8.53	218	0.936	<0.3	14.3	22.5	9.74	0.694	0.129	39.4

- 1. Bold** faced values exceed the ECMC Table 915-1 limit(s), but are within 1.25x background concentrations.
- 2. Bold** faced values exceed the ECMC Table 915-1 limit(s) and native background concentrations.
- Red & blue highlighted soil analytical values indicate an exceedance of the referenced soil screening level (SSL).
- Non-detect background results accounted for in the highest background concentration by using the reporting limit.

ECMC = Energy & Carbon Management Commission

(<) = Analytical result is less than the indicated laboratory reporting limit.

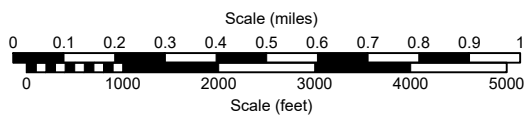
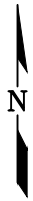
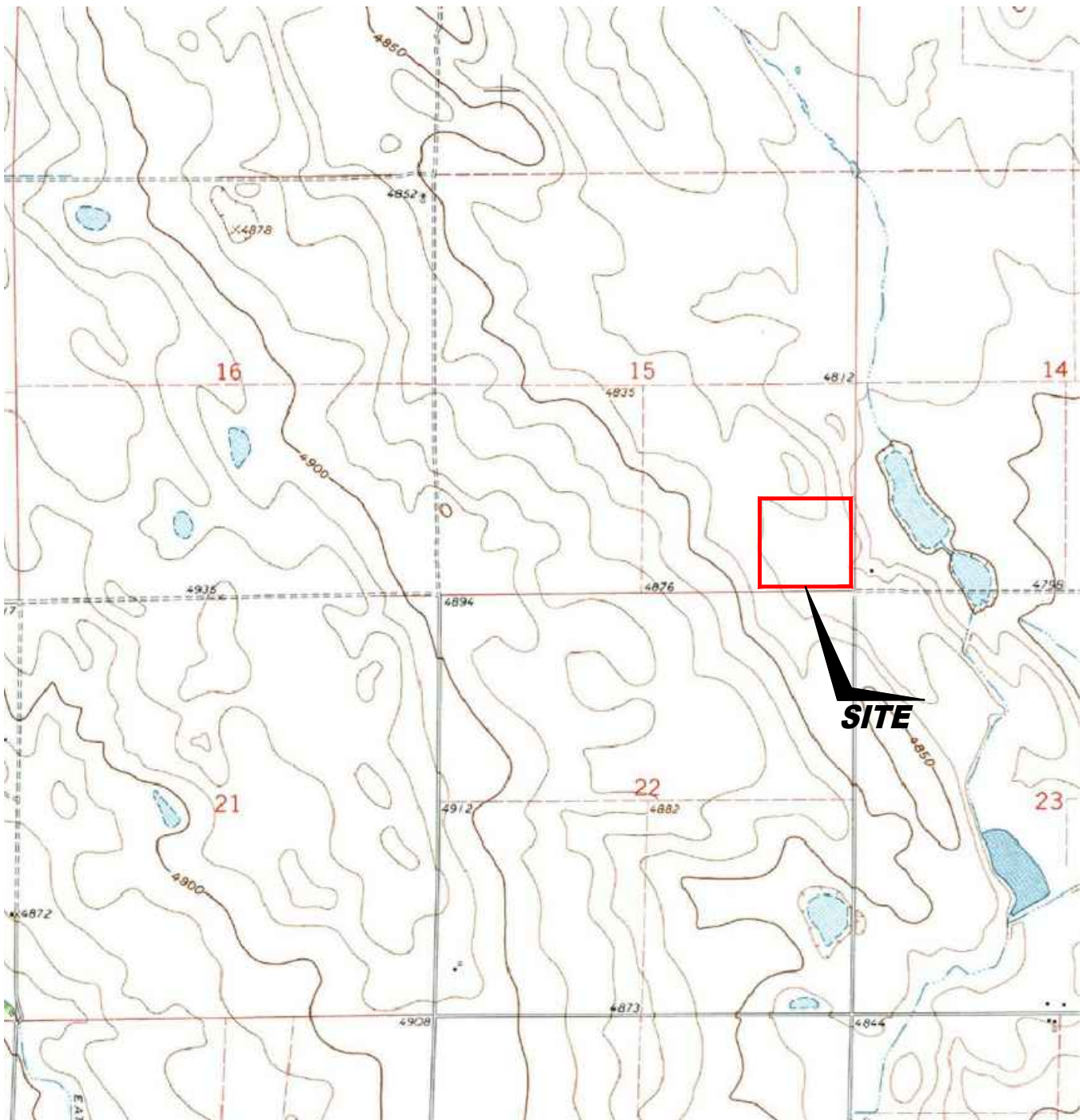
mg/kg = Milligrams per kilogram

ft. = Feet

bgs = Below ground surface

* Indicates laboratory minimum detection limit in excess of SSL

NA - Not analyzed/Not applicable

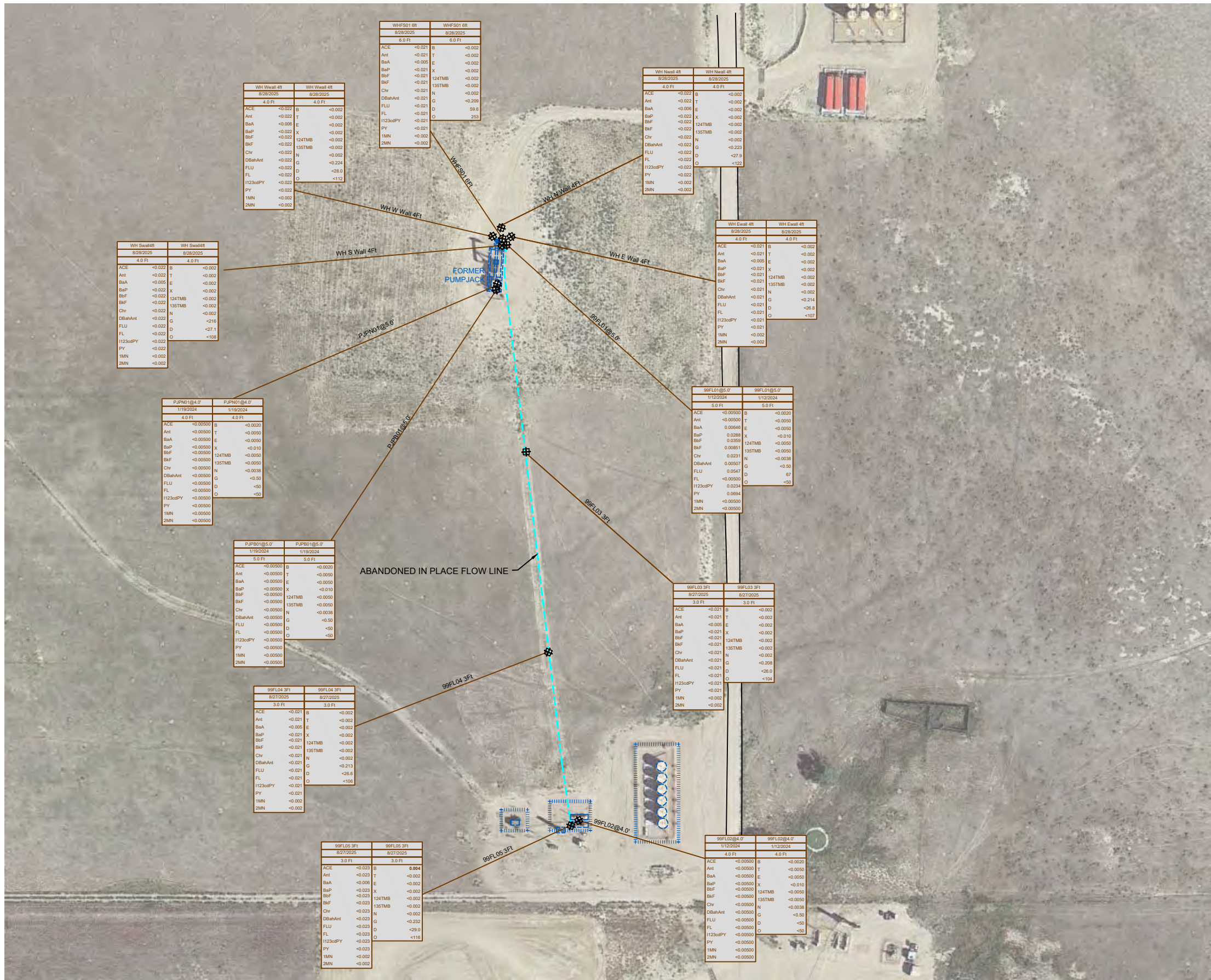


USGS 7.5 MINUTE SERIES (TOPOGRAPHIC)

Figure 1
SITE LOCATION MAP
NOBLE ENERGY INC ~ FURROW USX AB15-99HZ

SESE Sec. 15, T7N, R64W, 6th PM
Weld County, Colorado
40.568360°, -104.527110°

Project # C024-009	API # 05-123-31249	Facility #	
Date 10/22/25	Remediation # 30076	Filename 24009T	



LEGEND

- WELL HEAD LOCATION
- ⊗ SOIL SAMPLE LOCATION
- AST ABOVE GROUND STORAGE TANK
- FORMER FACILITY
- ABANDONED IN PLACE FLOW LINE
- FENCE LINE
- CONTAINMENT BERM
- CONTAINMENT WALL

SAMPLE ID	DATE SAMPLED	DEPTH (ft)	CONCENTRATION
ACE	8/28/2025	4.0	<0.002
Ant	8/28/2025	4.0	<0.002
BaA	8/28/2025	4.0	<0.002
BaP	8/28/2025	4.0	<0.002
BbF	8/28/2025	4.0	<0.002
BkF	8/28/2025	4.0	<0.002
Chr	8/28/2025	4.0	<0.002
DBahAnt	8/28/2025	4.0	<0.002
FLU	8/28/2025	4.0	<0.002
FL	8/28/2025	4.0	<0.002
I123cdPY	8/28/2025	4.0	<0.002
PY	8/28/2025	4.0	<0.002
1MN	8/28/2025	4.0	<0.002
2MN	8/28/2025	4.0	<0.002

SAMPLE ID	DATE SAMPLED	DEPTH (ft)	CONCENTRATION
ACE	8/28/2025	4.0	<0.002
Ant	8/28/2025	4.0	<0.002
BaA	8/28/2025	4.0	<0.002
BaP	8/28/2025	4.0	<0.002
BbF	8/28/2025	4.0	<0.002
BkF	8/28/2025	4.0	<0.002
Chr	8/28/2025	4.0	<0.002
DBahAnt	8/28/2025	4.0	<0.002
FLU	8/28/2025	4.0	<0.002
FL	8/28/2025	4.0	<0.002
I123cdPY	8/28/2025	4.0	<0.002
PY	8/28/2025	4.0	<0.002
1MN	8/28/2025	4.0	<0.002
2MN	8/28/2025	4.0	<0.002

SAMPLE ID	DATE SAMPLED	DEPTH (ft)	CONCENTRATION
ACE	8/28/2025	4.0	<0.002
Ant	8/28/2025	4.0	<0.002
BaA	8/28/2025	4.0	<0.002
BaP	8/28/2025	4.0	<0.002
BbF	8/28/2025	4.0	<0.002
BkF	8/28/2025	4.0	<0.002
Chr	8/28/2025	4.0	<0.002
DBahAnt	8/28/2025	4.0	<0.002
FLU	8/28/2025	4.0	<0.002
FL	8/28/2025	4.0	<0.002
I123cdPY	8/28/2025	4.0	<0.002
PY	8/28/2025	4.0	<0.002
1MN	8/28/2025	4.0	<0.002
2MN	8/28/2025	4.0	<0.002

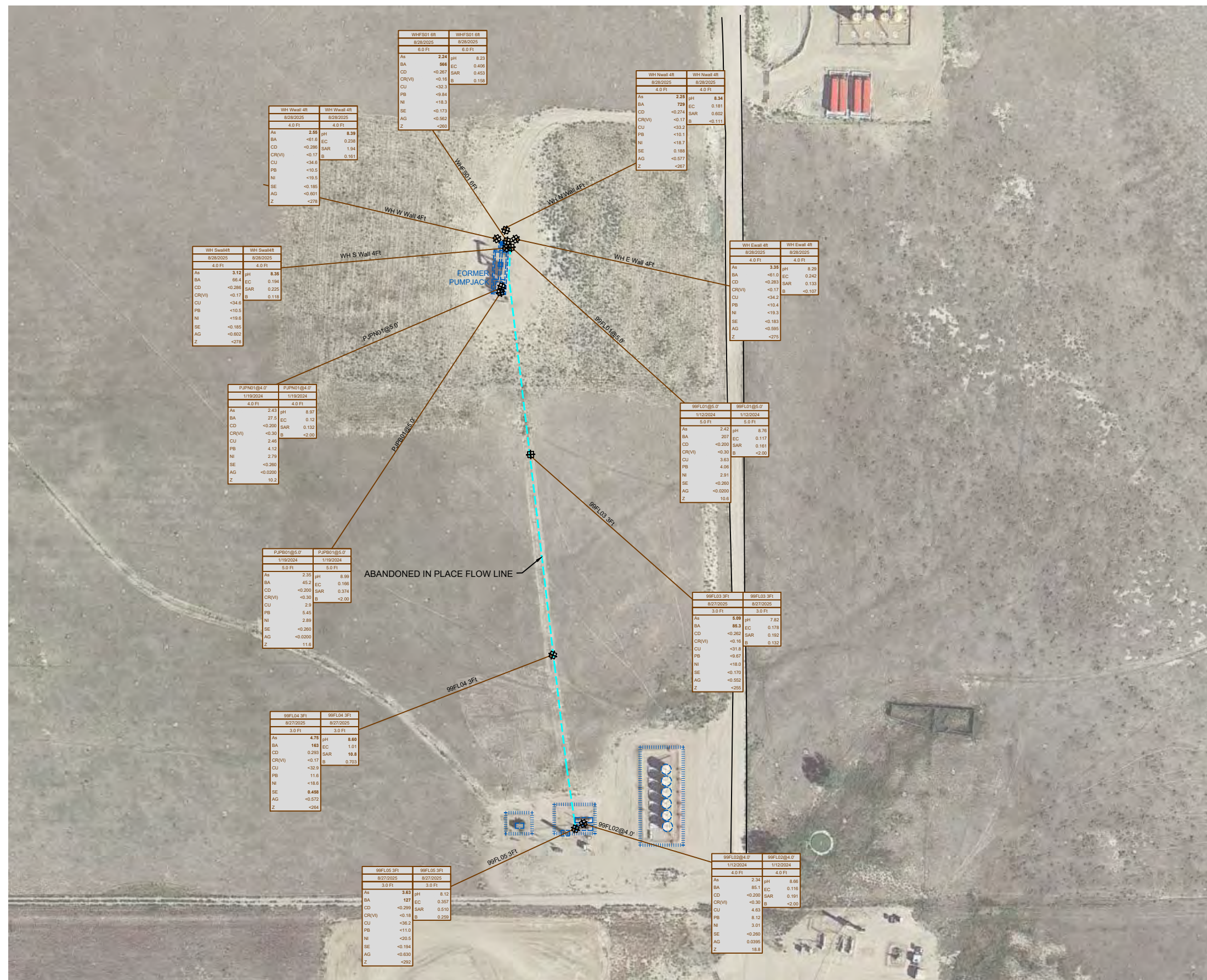
SAMPLE ID	DATE SAMPLED	DEPTH (ft)	CONCENTRATION
ACE	8/28/2025	4.0	<0.002
Ant	8/28/2025	4.0	<0.002
BaA	8/28/2025	4.0	<0.002
BaP	8/28/2025	4.0	<0.002
BbF	8/28/2025	4.0	<0.002
BkF	8/28/2025	4.0	<0.002
Chr	8/28/2025	4.0	<0.002
DBahAnt	8/28/2025	4.0	<0.002
FLU	8/28/2025	4.0	<0.002
FL	8/28/2025	4.0	<0.002
I123cdPY	8/28/2025	4.0	<0.002
PY	8/28/2025	4.0	<0.002
1MN	8/28/2025	4.0	<0.002
2MN	8/28/2025	4.0	<0.002

2013 GOOGLE EARTH AERIAL IMAGE

Scale (feet): 0 30 60 90 120 150

Figure 3
ORGANIC SOIL CHEMISTRY MAP
NOBLE ENERGY INC ~ FURROW USX AB15-99HZ
 SESE Sec. 15, T7N, R64W, 6th PM
 Weld County, Colorado
 40.568360°, -104.527110°

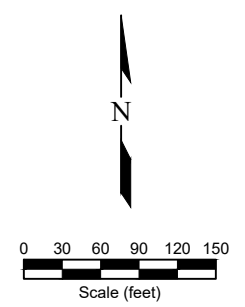
Project No. C024-009	API # 05-123-31249	Facility #
Date 10/22/25	Remediation # 30076	Filename 24009Q11.17



LEGEND

- WELL HEAD LOCATION
- ⊗ SOIL SAMPLE LOCATION
- AST ABOVE GROUND STORAGE TANK
- FORMER FACILITY
- ABANDONED IN PLACE FLOW LINE
- FENCE LINE
- CONTAINMENT BERM
- CONTAINMENT WALL

SAMPLE	SAMPLE ID	SAMPLE	SAMPLE ID
DATE	DATE SAMPLED	DATE	DATE SAMPLED
DEPTH	DEPTH (ft)	DEPTH	DEPTH (ft)
As	<0.01	ARSENIC (mg/kg)	
BA	<0.01	BARIUM (mg/kg)	
CD	<0.01	CADMIUM (mg/kg)	
CR(VI)	<0.05	CHROMIUM (mg/kg)	
CU	<0.01	COPPER (mg/kg)	
PB	<0.05	LEAD (mg/kg)	
NI	<0.05	NICKEL (mg/kg)	
SE	<0.5	SELENIUM (mg/kg)	
AG	<0.05	SILVER (mg/kg)	
Z	<0.05	ZINC (mg/kg)	

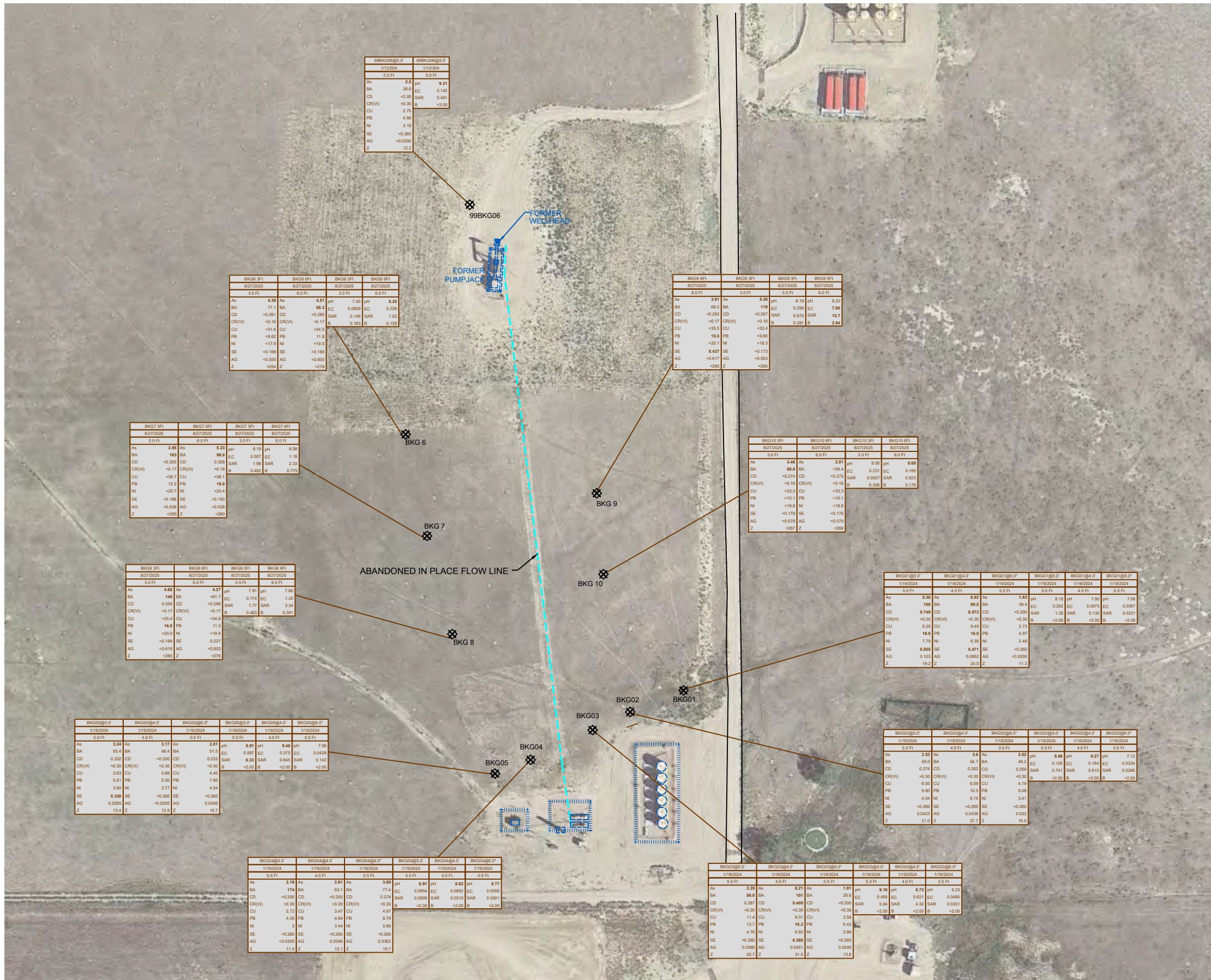


2013 GOOGLE EARTH AERIAL IMAGE

Figure 4
METALS AND INORGANIC SOIL CHEMISTRY MAP
NOBLE ENERGY INC ~ FURROW USX AB15-99HZ

SESE Sec. 15, T7N, R64W, 6th PM
 Weld County, Colorado
 40.568360°, -104.527110°

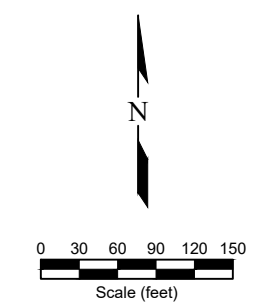
Project No. C024-009	API # 05-123-31249	Facility #
Date 10/22/25	Remediation # 30076	Filename 24009Q11.17



LEGEND

- WELL HEAD LOCATION
- ⊗ SOIL SAMPLE LOCATION
- AST ABOVE GROUND STORAGE TANK
- FORMER FORMER FACILITY
- ABANDONED IN PLACE FLOW LINE
- FENCE LINE
- CONTAINMENT BERM
- CONTAINMENT WALL

SAMPLE	DATE	DEPTH (ft)	SAMPLE ID	DATE SAMPLED	DEPTH (ft)	SAMPLE ID	DATE SAMPLED
As	<0.01	<0.01	ARSENIC (mg/kg)	pH	<5.00	SAR (units)	
BA	<0.01	<0.01	BARLIUM (mg/kg)	EC	7.00	pH (mmhos/cm)	
CD	<0.01	<0.01	CADMIUM (mg/kg)	SAR	<1	EC (mmhos/cm)	
CR(VI)	<0.01	<0.01	CHROMIUM (mg/kg)	B	<5	BORON (mg/L)	
CU	<0.01	<0.01	COPPER (mg/kg)				
PB	<0.05	<0.05	LEAD (mg/kg)				
NI	<0.05	<0.05	NICKEL (mg/kg)				
SE	<0.5	<0.5	SELENIUM (mg/kg)				
AG	<0.05	<0.05	SILVER (mg/kg)				
Z	<0.05	<0.05	ZINC (mg/kg)				



**Figure 5
BACKGROUND SAMPLE SOIL CHEMISTRY MAP
NOBLE ENERGY INC ~ FURROW USX AB15-99HZ**

SESE Sec. 15, T7N, R64W, 6th PM
Weld County, Colorado
40.568360°, -104.527110°

Project No. C024-009	API # 05-123-31249	Facility #
Date 10/22/25	Remediation # 30076	Filename 24009Q11.17

Photo Log



Description:

Photo Log



Description:

--

Photo Log



Description:

--

Photo Log



Description:

Photo Log



Description:

Photo Log



Description:

Photo Log



Description:

Photo Log



Description:

Photo Log



Description:

--

Photo Log



Description:

--

Photo Log



Description:

Photo Log



Description:

--

Photo Log



Description: