



99999999

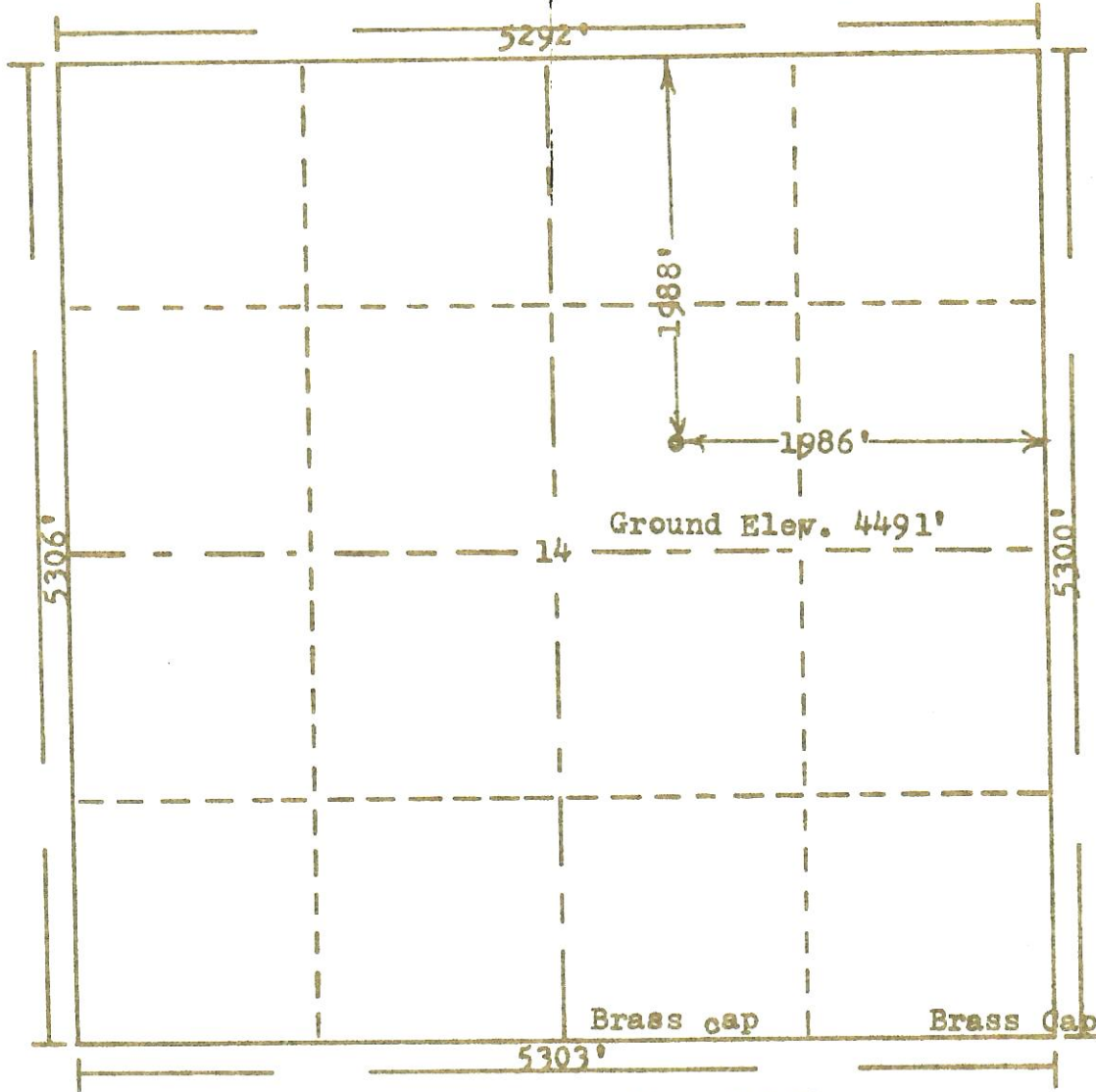
121-08407

RECEIVED

OCT 27 1969

COLO. OIL & GAS CONS. COMM.

R. 50W



Scale... 1" = 1000'

Powers Elevation Company, Inc. of Denver, Colorado  
 has in accordance with a request from Mr. Tucker  
 for Eapaco-Ladd & Allison Drlg. Co.  
 determined the location of No.2 Donald 14-3-50  
 to be CSW NE Section 14 Township 3S  
 Range 50W of the 6th Principal Meridian  
Washington County, Colorado

I hereby certify that this plat is an  
 accurate representation of a correct  
 survey showing the location of



00324325

Date: 10-22-69

Bess G. Hollen  
 Licensed Land Surveyor No. 2853  
 State of Colorado