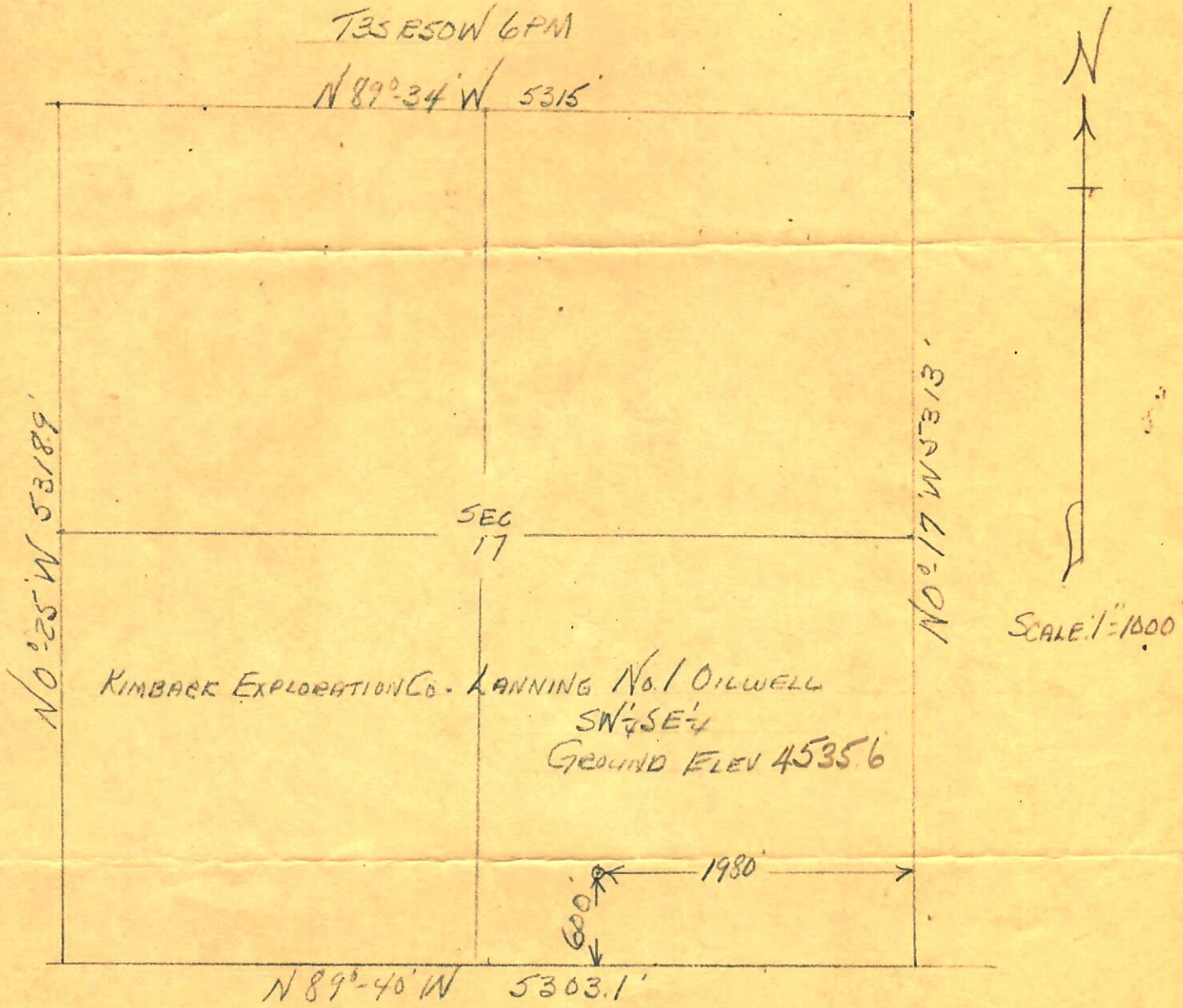




CERTIFICATE OF SURVEY
for
Kimbark Exploration Co.
Washington County, Colorado

RECEIVED
NOV 16 1965

OIL & GAS
CONSERVATION COMMISSION



I hereby certify that the above plat is an accurate representation of a correct survey showing the location of Kimbark Exploration Co.- Lanning No. 1 Oilwell in SW 1/4 SE 1/4 Sec. 17 T3S R50W 6PM. The elevation of the ground at the stake is 4535.6 feet above sea level from U.S.C.&G. Bench Mark.

Fort Morgan, Colorado
Nov. 10, 1965

Leslie Osborne
Registered Professional Engineer
State of Colorado

65-470