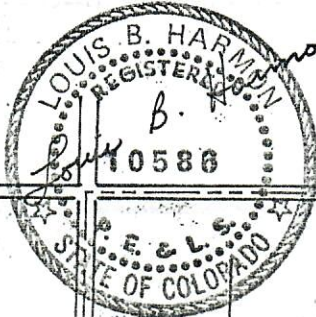


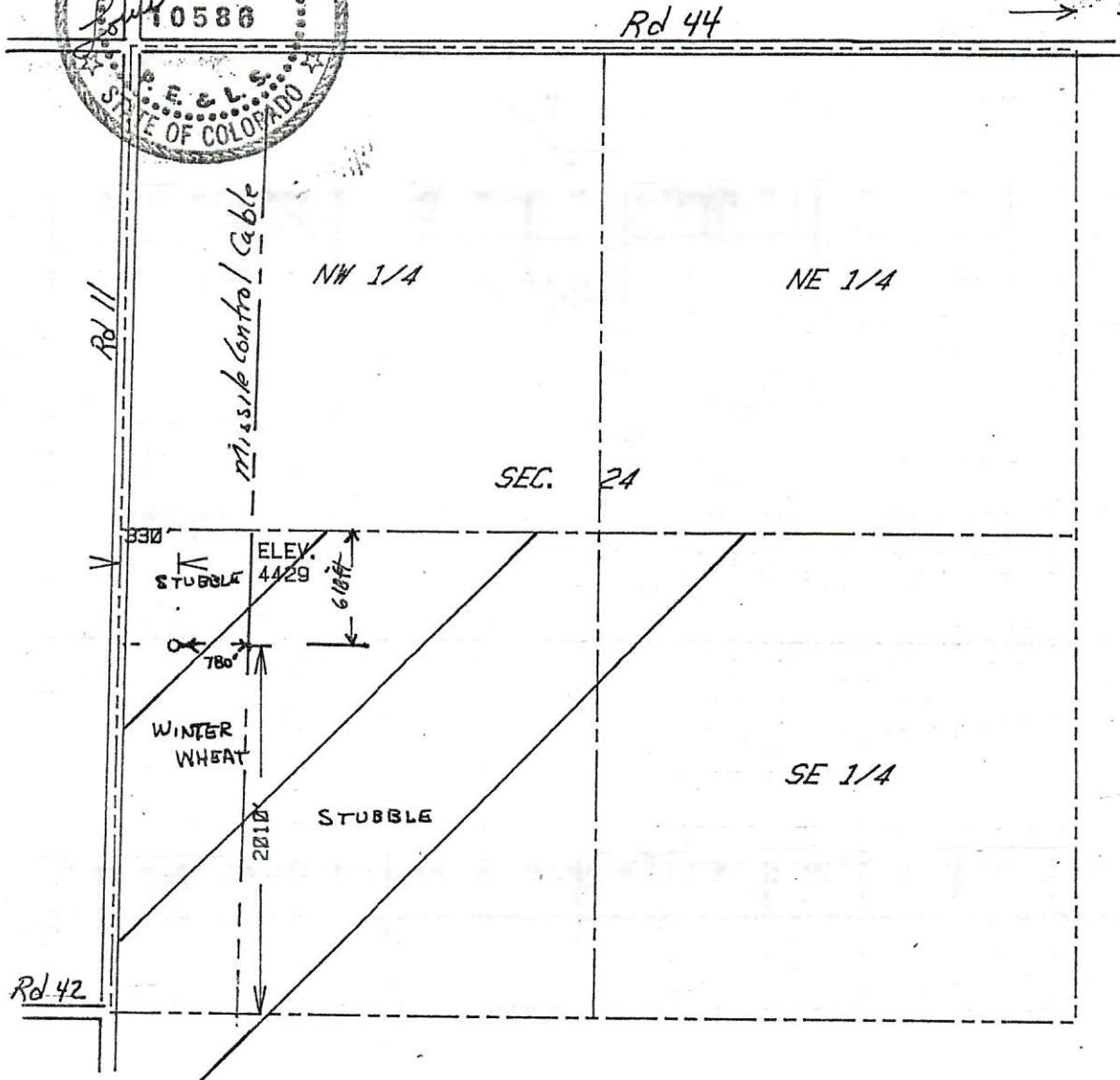


00259365

The accompanying plat is an accurate representation showing the location of a proposed well. This location may be described as a point 2010 feet north of the south line, and 330 feet east of the west line of Section 24, Township 9 N Range 55 W of the 6th P.M., LOGAN County, COLORADO. The surface elevation at this point is 4429 feet m.s.l.



STERLING 18 miles
→ south east



SCALE - 1"=1000'

- SURVEYED POINT
- REFERENCE STAKE (200 'N, 300 'W)
- SW 1/4 SEC. 24 , T 9 N, R 55 W

HARMON
ENGINEERING
SERVICES

#1 KEEN

IMPACT ENERGY

LOGAN CO., COLORADO

20 SEPT 1985

