

**INITIAL DECOMMISSIONING REPORT
WALCKER USX AB01-08P FLOWLINE**

**ECMC SPILL TRACKING # 491267
ECMC REMEDIATION # 41669**

Prepared for:

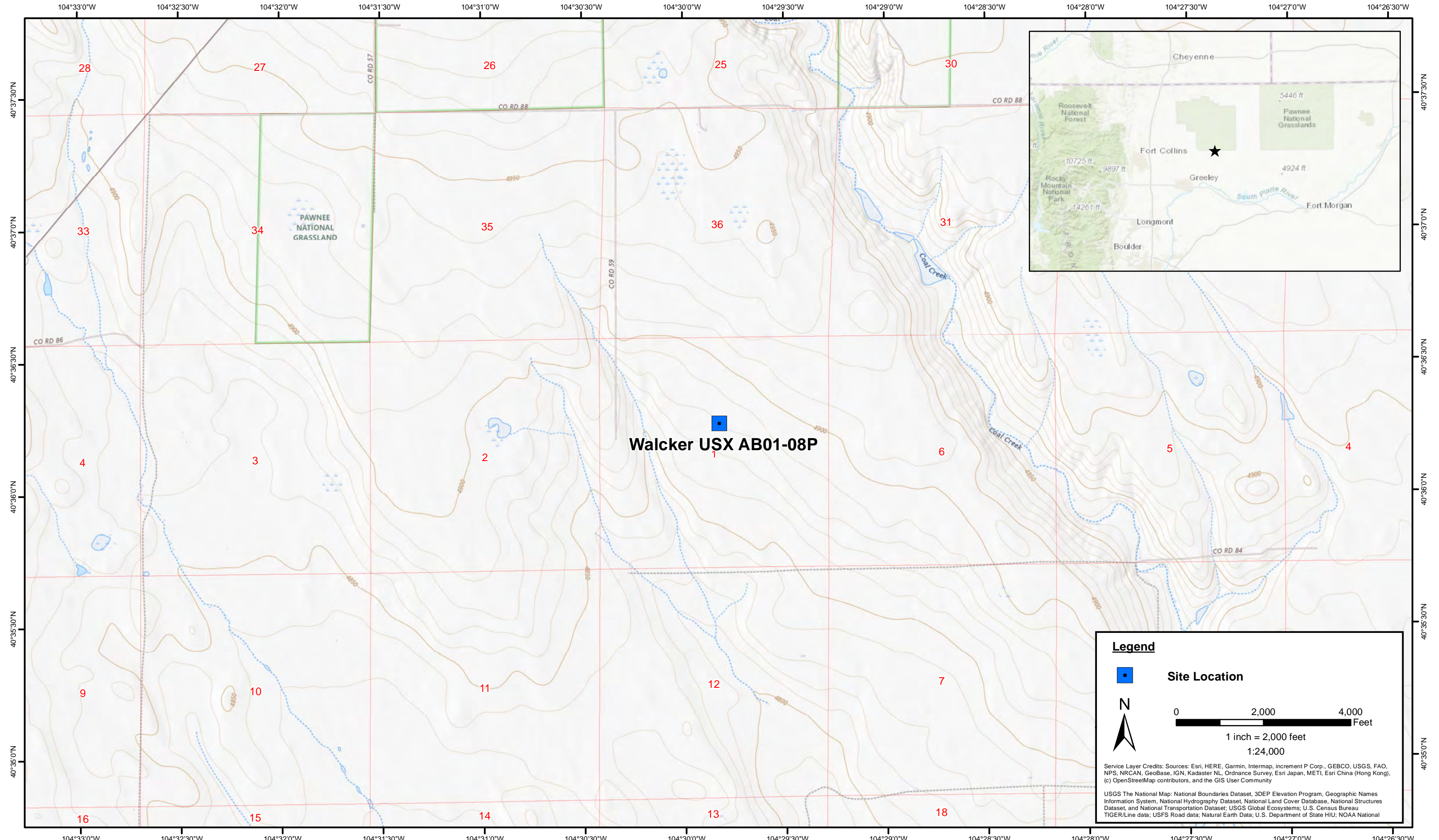


1099 18th Street
Suite 1500
Denver, CO 80202

Prepared by:



4725 Independence Street
Wheat Ridge, CO 80033



DATE: August 2025
 DESIGNED BY: J. Whritenour
 DRAWN BY: J. Woffinden

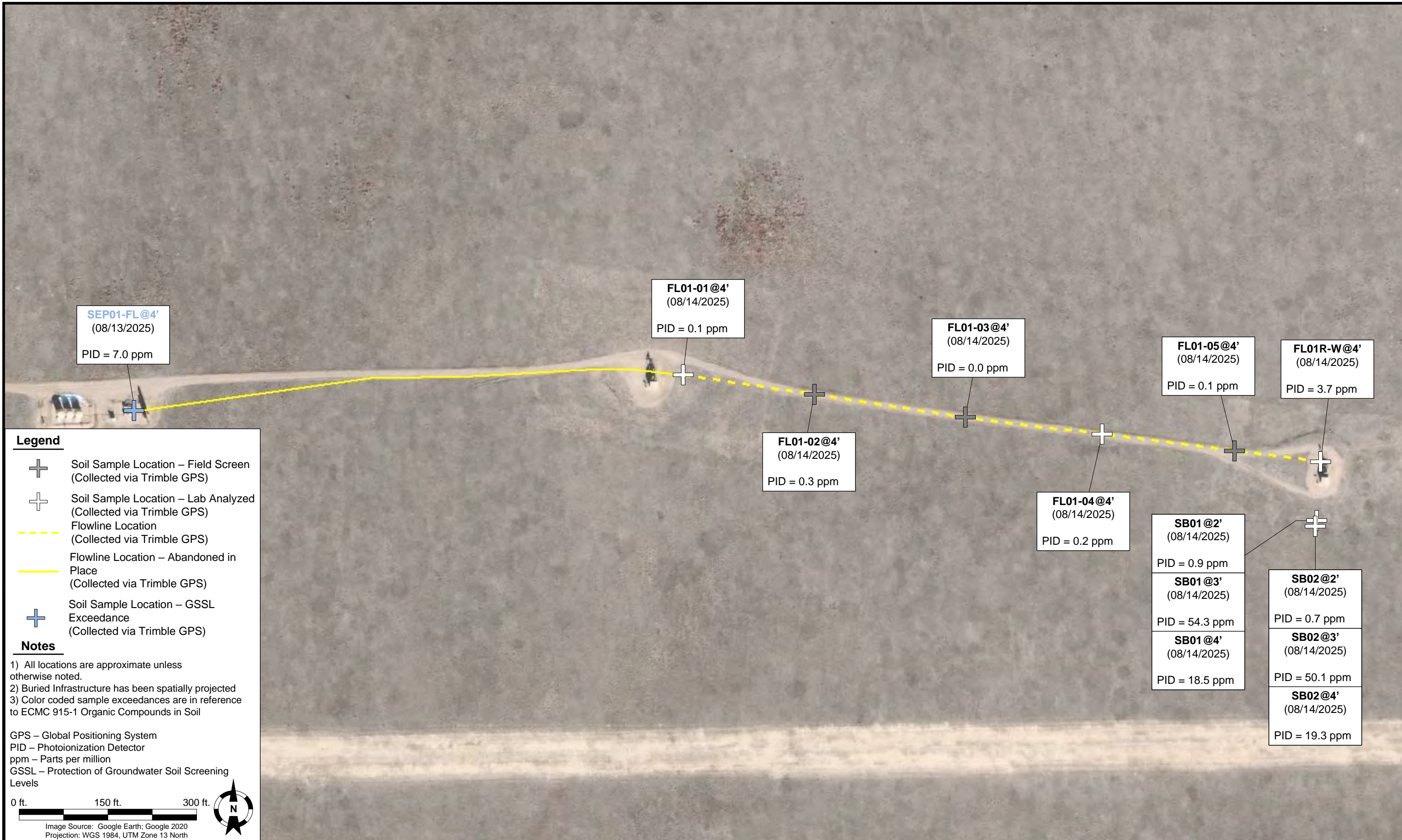


Tasman, Inc.
 4725 Independence St.
 Wheat Ridge, CO 80033

Noble Energy, Inc - 100322 - DJ Basin
Walcker USX AB01-08P
 SENE, Section 1, Township 7 North, Range 64
 West Weld County, Colorado

Site Location Map

Figure
 1



SEP01-FL@4'
 (08/13/2025)
 PID = 7.0 ppm

FL01-01@4'
 (08/14/2025)
 PID = 0.1 ppm

FL01-03@4'
 (08/14/2025)
 PID = 0.0 ppm

FL01-05@4'
 (08/14/2025)
 PID = 0.1 ppm

FL01R-W@4'
 (08/14/2025)
 PID = 3.7 ppm

FL01-02@4'
 (08/14/2025)
 PID = 0.3 ppm

FL01-04@4'
 (08/14/2025)
 PID = 0.2 ppm

SB01@2'
 (08/14/2025)
 PID = 0.9 ppm

SB01@3'
 (08/14/2025)
 PID = 54.3 ppm

SB01@4'
 (08/14/2025)
 PID = 18.5 ppm

SB02@2'
 (08/14/2025)
 PID = 0.7 ppm

SB02@3'
 (08/14/2025)
 PID = 50.1 ppm

SB02@4'
 (08/14/2025)
 PID = 19.3 ppm

DATE:	August 29, 2025
DESIGNED BY:	J. Whritenour
DRAWN BY:	E. Hossink



Tasman, Inc.
 4725 Independence Street
 Wheat Ridge, CO 80033

Noble Energy, Inc - 100322 - DJ Basin
Walcker USX AB01-08P Flowline
 SENE, Section 1, Township 7 North, Range 64 West
 Weld County, Colorado

SOIL SAMPLE
 LOCATION MAP
 (FLOWLINE)

FIGURE
 2

TABLE 1
FIELD DATA SUMMARY TABLE
NOBLE ENERGY, INC. - 100322
WALCKER USX AB01-08P FLOWLINE, WELD COUNTY, COLORADO
REM # 41669



Sample ID	Sample Date	Depth (ft. bgs)	GPS Data ¹		PDOP Value	VOC Concentration ² (ppm)
			Latitude/Longitude			
SEP01-FL@4'	08/13/2025	4	40.604442	-104.497177	1.1	7.0
FL01-01@4'	08/14/2025	4	40.604595	-104.493834	1.4	0.1
FL01-02@4'	08/14/2025	4	40.604501	-104.493035	1.2	0.3
FL01-03@4'	08/14/2025	4	40.604391	-104.492118	1.0	0.0
FL01-04@4'	08/14/2025	4	40.604308	-104.491285	0.9	0.2
FL01-05@4'	08/14/2025	4	40.604230	-104.490482	1.1	0.1
FL01R-W@4'	08/14/2025	4	40.604177	-104.489955	0.9	3.7
SB01@2'	08/14/2025	2	40.603902	-104.489980	1.0	0.9
SB01@3'	08/14/2025	3	40.603902	-104.489980	1.0	54.3
SB01@4'	08/14/2025	4	40.603902	-104.489980	1.0	18.5
SB02@2'	08/14/2025	2	40.603877	-104.489995	1.0	0.7
SB02@3'	08/14/2025	3	40.603877	-104.489995	1.0	50.1
SB02@4'	08/14/2025	4	40.603877	-104.489995	1.0	19.3

Notes:

1. Global Positioning System (GPS) data is provided in decimal degrees using North American Datum (NAD) 83 UTM Zone 13 North.
2. Volatile organic compound (VOC) concentrations are measured in the field using a photoionization detector (PID).

PDOP = Position Dilution of Precision

ppm = Parts per million

ft. = Feet

bgs = Below ground surface

NC = Not collected

NA = Not analyzed

Source material characterization sample, excavated and transported off site for disposal.

Material excavated and transported off site for disposal.

TABLE 2
SUMMARY OF VOLATILE ORGANIC SOIL CHEMISTRY DATA
NOBLE ENERGY, INC. - 100322
WALCKER USX AB01-08P FLOWLINE, WELD COUNTY, COLORADO
REM # 41669



Sample ID	Sample Date	Depth (ft. bgs)	Benzene (mg/kg)	Toluene (mg/kg)	Ethyl-Benzene (mg/kg)	Xylenes (mg/kg)	1,2,4-Trimethyl-Benzene (mg/kg)	1,3,5-Trimethyl-Benzene (mg/kg)	Naphthalene (mg/kg)	TPH (mg/kg)	TPH GRO (mg/kg)	TPH DRO (mg/kg)	TPH ORO (mg/kg)
ECMC Table 915-1 Limits (Residential SSL)			1.2	490	5.8	58	30	27	2	500	500**		
ECMC Table 915-1 Limits (Protection of Groundwater SSL)			0.0026	0.69	0.78	9.9	0.0081	0.0087	0.0038	500	500**		
SEP01-FL@4'	08/13/2025	4	<0.0012	<0.0024	<0.0024	0.0096	0.0051	<0.0024	0.0053	21.7	<0.24	10.4	11.3
FL01-01@4'	08/14/2025	4	<0.0010	<0.0020	<0.0020	<0.0020	<0.0020	<0.0020	<0.0020	8.95	<0.20	<4.1	8.95
FL01-04@4'	08/14/2025	4	<0.0010	<0.0020	<0.0020	<0.0020	<0.0020	<0.0020	<0.0021	<6.1	<0.20	<4.1	<6.1
FL01R-W@4'	08/14/2025	4	<0.00098	<0.0020	<0.0020	<0.0020	<0.0020	<0.0020	<0.0021	84.2	<0.20	28.5	55.7
SB01@2'	08/14/2025	2	<0.0011	<0.0021	<0.0021	<0.0021	<0.0021	<0.0021	<0.0021	<6.2	<0.21	<4.1	<6.2
SB01@3'	08/14/2025	3	<0.0010	<0.0020	<0.0020	<0.0020	<0.0020	<0.0020	<0.0020	<6.5	<0.20	<4.3	<6.5
SB01@4'	08/14/2025	4	<0.0011	<0.0021	<0.0021	<0.0021	<0.0021	<0.0021	<0.0021	<6.3	<0.21	<4.2	<6.3
SB02@2'	08/14/2025	2	<0.0011	<0.0021	<0.0021	<0.0021	<0.0021	<0.0021	<0.0021	<6.4	<0.21	<4.3	<6.4
SB02@3'	08/14/2025	3	<0.0011	<0.0021	<0.0021	<0.0021	<0.0021	<0.0021	<0.0020	<6.3	<0.21	<4.2	<6.3
SB02@4'	08/14/2025	4	<0.0011	<0.0022	<0.0022	<0.0022	<0.0022	<0.0022	<0.0022	<6.6	<0.22	<4.4	<6.6

Notes:

1. **Bold** values exceed the ECMC Table 915-1 limit(s).
2. Red & blue highlighted soil analytical values indicate an exceedance of the referenced soil screening level (SSL).
3. ** Summation of GRO+DRO+ORO must be less than 500 mg/kg.

ECMC = Energy and Carbon Management Commission

(<) = Analytical result is less than the indicated laboratory reporting limit.

TPH-GRO = Total petroleum hydrocarbons - gasoline range organics

TPH-DRO = Total petroleum hydrocarbons - diesel range organics

TPH-ORO = Total petroleum hydrocarbons - oil range organics

mg/kg = Milligrams per kilogram

ft. = Feet

bgs = Below ground surface

NA = Not analyzed

Source material characterization sample, excavated and transported off site for disposal.

Material excavated and transported off site for disposal.

TABLE 3
SUMMARY OF POLYCYCLIC AROMATIC HYDROCARBON SOIL CHEMISTRY DATA
NOBLE ENERGY, INC. - 100322
WALCKER USX AB01-08P FLOWLINE, WELD COUNTY, COLORADO
REM # 41669



Sample ID	Sample Date	Depth (ft. bgs)	Acenaphthene (mg/kg)	Anthracene (mg/kg)	Benzo (a) Anthracene (mg/kg)	Benzo (a) Pyrene (mg/kg)	Benzo (b) Fluoranthene (mg/kg)	Benzo (k) Fluoranthene (mg/kg)	Chrysene (mg/kg)	Dibenzo (a,h) Anthracene (mg/kg)	Fluoranthene (mg/kg)	Fluorene (mg/kg)	Indeno (1,2,3-cd) Pyrene (mg/kg)	Pyrene (mg/kg)	1-Methyl - Naphthalene (mg/kg)	2-Methyl - Naphthalene (mg/kg)
ECMC Table 915-1 Limits (Residential SSL)			360	1800	1.1	0.11	1.1	11	110	0.11	240	240	1.1	180	18	24
ECMC Table 915-1 Limits (Protection of Groundwater SSL)			0.55	5.8	0.011	0.24	0.3	2.9	9	0.096	8.9	0.54	0.98	1.3	0.006	0.019
SEP01-FL@4'	8/13/2025	4	<0.0045	<0.0045	<0.0057	<0.0045	<0.0045	<0.0045	<0.0045	<0.0045	<0.0045	<0.0045	<0.0045	<0.0045	0.0087	0.0092
FL01-01@4'	8/14/2025	4	<0.0040	<0.0040	<0.0050	<0.0040	<0.0040	<0.0040	<0.0040	<0.0040	0.0108	<0.0040	<0.0040	0.0088	<0.0040	<0.0040
FL01-04@4'	8/14/2025	4	<0.0042	<0.0042	0.0070	0.0044	0.0061	<0.0042	0.0055	<0.0042	0.0140	<0.0042	<0.0042	0.0110	<0.0042	<0.0042
FL01R-W@4'	8/14/2025	4	<0.0043	<0.0043	<0.0053	<0.0043	<0.0043	<0.0043	<0.0043	<0.0043	<0.0043	<0.0043	<0.0043	<0.0043	<0.0043	<0.0043
SB01@2'	8/14/2025	2	<0.0042	<0.0042	<0.0052	<0.0042	<0.0042	<0.0042	<0.0042	<0.0042	<0.0042	<0.0042	<0.0042	<0.0042	<0.0042	<0.0042
SB01@3'	8/14/2025	3	<0.0041	<0.0041	<0.0051	<0.0041	<0.0041	<0.0041	<0.0041	<0.0041	<0.0041	<0.0041	<0.0041	<0.0041	<0.0041	<0.0041
SB01@4'	8/14/2025	4	<0.0042	<0.0042	<0.0052	<0.0042	<0.0042	<0.0042	<0.0042	<0.0042	<0.0042	<0.0042	<0.0042	<0.0042	<0.0042	<0.0042
SB02@2'	8/14/2025	2	<0.0043	<0.0043	<0.0053	<0.0043	<0.0043	<0.0043	<0.0043	<0.0043	<0.0043	<0.0043	<0.0043	<0.0043	<0.0043	<0.0043
SB02@3'	8/14/2025	3	<0.0041	<0.0041	<0.0051	<0.0041	<0.0041	<0.0041	<0.0041	<0.0041	<0.0041	<0.0041	<0.0041	<0.0041	<0.0041	<0.0041
SB02@4'	8/14/2025	4	<0.0045	<0.0045	<0.0056	<0.0045	<0.0045	<0.0045	<0.0045	<0.0045	<0.0045	<0.0045	<0.0045	<0.0045	<0.0045	<0.0045

Notes:

- 1.** Bold values exceed the ECMC Table 915-1 limit(s).
- 2.** Red & blue highlighted soil analytical values indicate an exceedance of the referenced soil screening level (SSL).
- 3.** * Indicates laboratory minimum detection limit in excess of SSL.

ECMC = Energy and Carbon Management Commission

(<) = Analytical result is less than the indicated laboratory reporting limit.

mg/kg = Milligrams per kilogram

ft. = Feet

bgs = Below ground surface

NA = Not analyzed

RP = Results Pending

Source material characterization sample, excavated and transported off site for disposal.

Material excavated and transported off site for disposal.

TABLE 4
SUMMARY OF SOIL SUITABILITY FOR RECLAMATION
NOBLE ENERGY, INC. - 100322
WALCKER USX AB01-08P FLOWLINE, WELD COUNTY, COLORADO
REM # 41669



Sample ID	Sample Date	Depth (ft. bgs)	pH (Standard Units)	EC (mmhos/cm)	SAR (Standard Units)	Boron (mg/L)
ECMC Table 915-1 Soil Suitability Limits			6 - 8.3	<4	<6	2
SEP01-FL@4'	8/13/2025	4	7.71	0.36	0.272	<0.50
FL01-01@4'	8/14/2025	4	7.34	3.7	3.75	<0.50
FL01-04@4'	8/14/2025	4	7.45	0.55	0.334	<0.50
FL01R-W@4'	8/14/2025	4	8.16	0.37	0.361	<0.50

Notes:

1. **Bold** faced values exceed the ECMC Table 915-1 limit(s), but are within background concentrations.
2. **Bold** faced values exceed the ECMC Table 915-1 limit(s) and native background concentrations.
3. Brown highlighted soil analytical values indicate a regulatory exceedance.

ECMC = Energy and Carbon Management Commission

(<) = Analytical result is less than the indicated laboratory reporting limit.

mg/L = Milligrams per liter

ft. = Feet

bgs = Below ground surface

NA = Not analyzed

EC = Electrical conductivity

SAR = Sodium adsorption ratio

mmhos/cm = Millimohs per centimeter

RP = Results Pending

Source material characterization sample, excavated and transported off site for disposal.

Material excavated and transported off site for disposal.

TABLE 5
SUMMARY OF METALS IN SOIL CHEMISTRY DATA
NOBLE ENERGY, INC. - 100322
WALCKER UXS AB01-08P FLOWLINE, WELD COUNTY, COLORADO
REM # 41669



Sample ID	Sample Date	Depth (ft. bgs)	Arsenic (mg/kg)	Barium (mg/kg)	Cadmium (mg/kg)	Chromium (VI) ⁶ (mg/kg)	Copper (mg/kg)	Lead (mg/kg)	Nickel (mg/kg)	Selenium (mg/kg)	Silver (mg/kg)	Zinc (mg/kg)
ECMC Table 915-1 Limits (Residential SSL)			0.68	15000	71	0.3	3100	400	1500	390	390	23000
ECMC Table 915-1 Limits (Protection of Groundwater SSL)			0.29	82	0.38	0.00067	46	14	26	0.26	0.8	370
SEP01-FL@4'	8/13/2025	4	5.4	90.8	0.23	0.56	8.7	8.2	8.3	<0.23	<0.057	31.4
FL01-01@4'	8/14/2025	4	3.1	74.5	0.11	<0.43	6.4	7.1	4.2	0.23	<0.051	16.3
FL01-04@4'	8/14/2025	4	3.0	62.6	0.13	<0.44	5.0	6.6	4.8	<0.21	<0.053	16.6
FL01R-W@4'	8/14/2025	4	2.6	493	0.12	<0.45	6.5	6.2	4.7	<0.21	<0.052	19.4

Notes:

1. **Bold** faced values exceed the ECMC Table 915-1 limit(s), but are within 1.25x background concentrations.
2. **Bold** faced values exceed the ECMC Table 915-1 limit(s) and native background concentrations.
3. Red & blue highlighted soil analytical values indicate an exceedance of the referenced soil screening level (SSL).
4. Reporting limit used for 1.25 multiplier when all background results for a specific metal are non-detect.
5. * Indicates laboratory minimum detection limit in excess of SSL.
6. Compound falls within the ECMC Table 915-1 footnote 9.

ECMC = Energy & Carbon Management Commission

(<) = Analytical result is less than the indicated laboratory reporting limit.

mg/kg = Milligrams per kilogram

ft. = Feet

bgs = Below ground surface

NA = Not analyzed

RP = Results Pending

Source material characterization sample, excavated and transported off site for disposal.

Material excavated and transported off site for disposal.



FLOWLINE ABANDONMENT FORM

CLIENT: Noble Energy		SITE NAME: WALCKER USX AB01-08P					DATE: 8/13/2025	REM. PROJECT #: 41669	WEATHER: Sunny 80°	
SITE DIRECTIONS: CR 80 & CR55, E 1.0 mi, N 1.9 mi, E 0.9 mi, N 0.6 mi, E 0.4 into							JOB#: 10700			
LEGALS AND LAT/LONG: 40.604437, -104.497244							TASMAN PERSONNEL: E. Card			
SOIL TYPES: Well Graded Sand - SW							SURFACE GRADIENT: Southwest			
SOIL SAMPLING							FACILITY INFRASTRUCTURE			
Date/Time	Soil Sample ID	PID (ppm)	Visual	Olfactory	Photo?	Grab or Lab Sample?	EQUIPMENT		Quantity	
							Above Ground Storage Tank (AST)			
08-13-2025 12:15	SEP01-FL@4'	7.0	No Staining	No Odor	Yes	Lab	Buried or Partially Buried Vessel			
							Separator			
							Emission Control Device (ECD)			
							Dump Line			
							Wellhead			
							Flowline		1 <input checked="" type="checkbox"/>	
							Other:			
							Soil Loads Removed			
							IMPACTED SOIL IDENTIFIED?			
							ESTIMATED VOLUME OF IMPACTS:			
							Date	Number	CY	
							Total Removed		0 0	
							Disposal Facility:			
							Groundwater Recovery			
							DATE GW ENCOUNTERED:		DEPTH:	
							GROUNDWATER IN CONTACT WITH IMPACTED SOIL?			
							LNAPL OR SHEEN OBSERVED ON GW?			
GROUNDWATER SAMPLING							Date	BBLs		
Date/Time	Groundwater Sample ID	Depth Collected	Turbid?	Sheen?	Odor?	Photo?				
							Total Removed		0	
							Disposal Facility:			

Chevron Rockies Business Unit

Field Qualitative Criteria for ECMC Reporting Associated with the Discovery of Potentially Impacted Material

If answered **Yes** to any of the questions listed below, this may suggest the presence of potentially impacted materials as outlined in ECMC Rule 912. Out of an abundance of caution, a “Yes” response will be reported to the ECMC within 24 hours after discovery, regardless of laboratory results. **Immediately notify the RBU Remediation Team.** Include a copy of this Field Qualitative Spill Criteria Checklist in the field Report.

Please answer the following questions when on-site:

1. Is there visible petroleum hydrocarbon staining in the soil? No_____
2. Does the soil sample from the stained area have a petroleum odor? No_____
3. Is there a petroleum hydrocarbon sheen on the nearby surface water? No_____
4. Does there appear to be a sheen of the surface of accumulated groundwater or seeps within the excavation indicative of petroleum? No_____
5. Is stained soil in contact with groundwater? No_____

Please Include relevant photos of the site conditions for items 1-5.

Location name: WALCKER USX AB01-08P

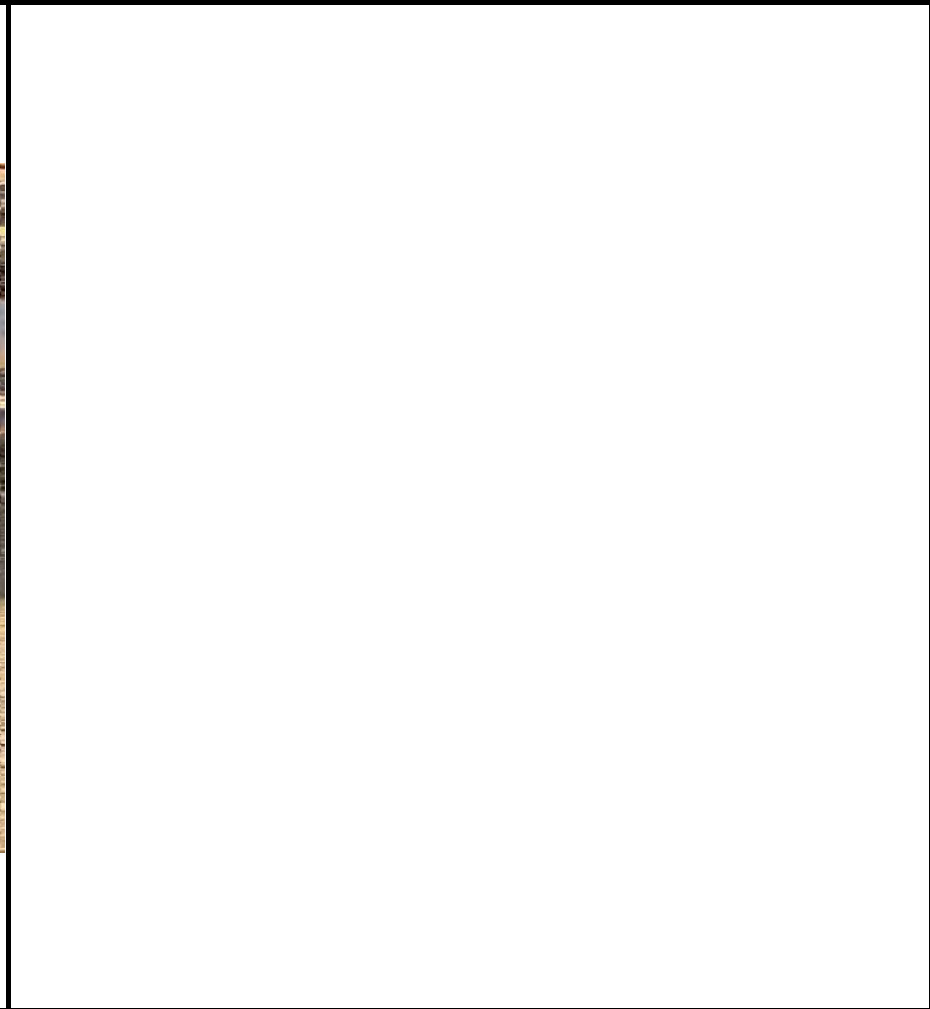
Please Circle Facility Type: Flowline



Photographic Log



Equipment ID:		Equipment Type:	
Material:	Volume:	Contents:	
Notes/Conditions:			



Equipment ID:		Equipment Type:	
Material:	Volume:	Contents:	
Notes/Conditions:			



CLIENT: Noble Energy		SITE NAME: WALCKER USX AB01-08P					DATE: 8/14/2025	REM. PROJECT #: 41669	WEATHER: 90s, sunny	
SITE DIRECTIONS: CR 80 & CR55, E 1.0 mi, N 1.9 mi, E 0.9 mi, N 0.6 mi, E 0.4 into							JOB#: 10700			
LEGALS AND LAT/LONG: 40.604437, -104.497244							TASMAN PERSONNEL: E. Gooding-Lord			
SOIL TYPES: Well Graded Sand - SW							SURFACE GRADIENT: West			
SOIL SAMPLING							FACILITY INFRASTRUCTURE			
Date/Time	Soil Sample ID	PID (ppm)	Visual	Olfactory	Photo?	Grab or Lab Sample?	EQUIPMENT		Quantity	
							Above Ground Storage Tank (AST)			
08-14-2025 10:45	FL01-01@4'	0.1	No Staining	No Odor	Yes	Lab	Buried or Partially Buried Vessel			
08-14-2025 10:50	FL01-02@4'	0.3	No Staining	No Odor	Yes	Grab	Separator			
08-14-2025 10:55	FL01-03@4'	0.0	No Staining	No Odor	Yes	Grab	Emission Control Device (ECD)			
08-14-2025 11:00	FL01-04@4'	0.2	No Staining	No Odor	Yes	Lab	Dump Line			
08-14-2025 11:05	FL01-05@4'	0.1	No Staining	No Odor	Yes	Grab	Wellhead			
08-14-2025 11:10	FL01R-W@4'	3.7	No Staining	No Odor	Yes	Lab	Flowline		1	
							Other:			
08-14-2025 12:00	SB01@2'	0.9	No Staining	No Odor	Yes	Lab	Soil Loads Removed			
08-14-2025 12:05	SB01@3'	54.3	No Staining	No Odor	Yes	Lab	IMPACTED SOIL IDENTIFIED? No			
08-14-2025 12:10	SB01@4'	18.5	No Staining	No Odor	Yes	Lab	ESTIMATED VOLUME OF IMPACTS:			
08-14-2025 12:15	SB02@2'	0.7	No Staining	No Odor	Yes	Lab	Date	Number	CY	
08-14-2025 12:20	SB02@3'	50.1	No Staining	No Odor	Yes	Lab				
08-14-2025 12:25	SB02@4'	19.3	No Staining	No Odor	Yes	Lab				
							Total Removed		0 0	
							Disposal Facility:			
							Groundwater Recovery			
							DATE GW ENCOUNTERED:		DEPTH:	
							GROUNDWATER IN CONTACT WITH IMPACTED SOIL?			
							LNAPL OR SHEEN OBSERVED ON GW?			
GROUNDWATER SAMPLING							Date	BBLs		
Date/Time	Groundwater Sample ID	Depth Collected	Turbid?	Sheen?	Odor?	Photo?				
							Total Removed		0	
							Disposal Facility:			

Chevron Rockies Business Unit

Field Qualitative Criteria for ECMC Reporting Associated with the Discovery of Potentially Impacted Material

If answered **Yes** to any of the questions listed below, this may suggest the presence of potentially impacted materials as outlined in ECMC Rule 912. Out of an abundance of caution, a “Yes” response will be reported to the ECMC within 24 hours after discovery, regardless of laboratory results. **Immediately notify the RBU Remediation Team.** Include a copy of this Field Qualitative Spill Criteria Checklist in the field Report.

Please answer the following questions when on-site:

1. Is there visible petroleum hydrocarbon staining in the soil? No_____
2. Does the soil sample from the stained area have a petroleum odor? No_____
3. Is there a petroleum hydrocarbon sheen on the nearby surface water? No_____
4. Does there appear to be a sheen of the surface of accumulated groundwater or seeps within the excavation indicative of petroleum? No_____
5. Is stained soil in contact with groundwater? No_____

Please Include relevant photos of the site conditions for items 1-5.

Location name: WALCKER USX AB01-08P

Please Circle Facility Type: Flowline



Photographic Log



Equipment ID: FL01-01 @ 4'		Equipment Type:		Equipment ID: FL01-02 @ 4'		Equipment Type:	
Material:	Volume:	Contents:		Material:	Volume:	Contents:	
Notes/Conditions: Facing West				Notes/Conditions: Facing West			



Photographic Log



Equipment ID: FL01-03@4'		Equipment Type:		Equipment ID: FL01-04@4'		Equipment Type:	
Material:	Volume:	Contents:		Material:	Volume:	Contents:	
Notes/Conditions: Facing West				Notes/Conditions: Facing West			



Photographic Log



Equipment ID: FL01-05@4'		Equipment Type:		Equipment ID: FL01R-W@4'		Equipment Type:	
Material:	Volume:	Contents:		Material:	Volume:	Contents:	
Notes/Conditions: Facing west				Notes/Conditions: Facing east			



Photographic Log



Equipment ID:		Equipment Type:	
Material:	Volume:	Contents:	
Notes/Conditions: SB01 @2', SB01 @3', & SB01 @4' Facing South			

Equipment ID:		Equipment Type:	
Material:	Volume:	Contents:	
Notes/Conditions: SB02 @2', SB02 @3', & SB02 @4' Facing East			