

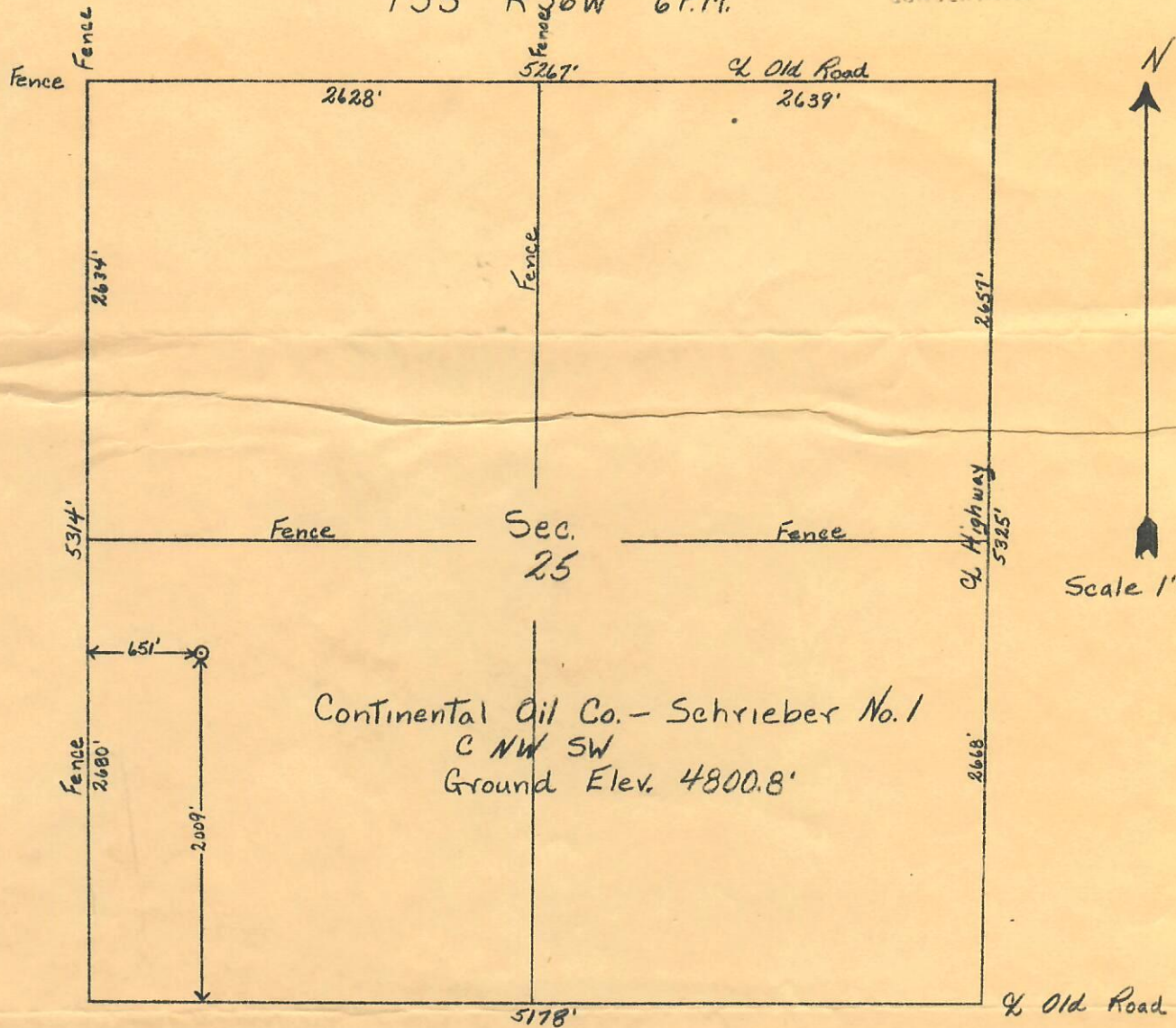
CERTIFICATE OF SURVEY
for
Continental Oil Co.
Washington County, Colo.

RECEIVED
NOV 21 1955



T3S R56W 6P.M.

CONVEYANCE CONDITIONS



I hereby certify that the above plat is an accurate representation of a correct survey showing the location of Continental Oil Co.-Schrieber No. 1 Oilwell in C NW SW Sec. 25 T3S R56W 6PM. The elevation of the ground at the stake is 4800.8 feet above sea level from U.S.C.&G. Bench Mark.

Fort Morgan, Colorado
November 11, 1955.

Bevil J. Osborne
Registered Professional Engineer
State of Colorado.

