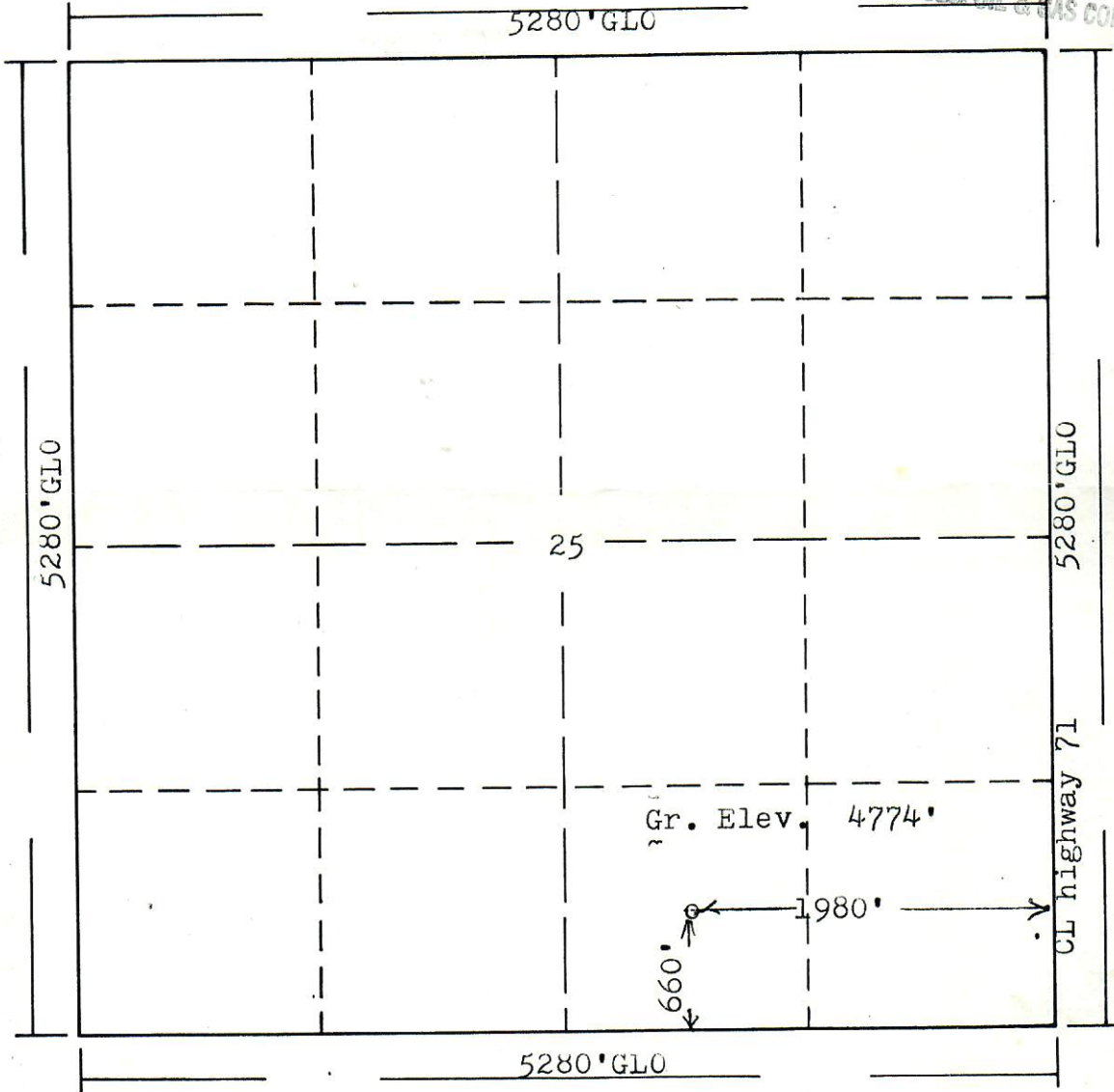




Form PS-102



RECEIVED  
*state*  
NOV 27 1985  
COLO. OIL & GAS CONS. COM.

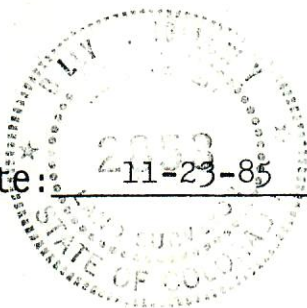


Scale: 1"=1000'

Powers Elevation of Denver, Colorado has in accordance with a request from Mr. Gear for Shenandoah Production Co., Inc. determined the location of No.1 Schreiber to be CSE SE Section 25, Township 3S Range 56W of the 6th Principal Meridian, Washington County, Colorado

I hereby certify that this plat is an accurate representation of a correct survey showing the location of

Date: 11-23-85



Brian J. Hossary  
Licensed Land Surveyor No. 2853  
State of Colorado

T. 3S

