

CASING RECORD

8 5/8 @ 330' w/200 sx cement.

No Drill Stem Tests

No Cores

No Logs Run On Well #1B

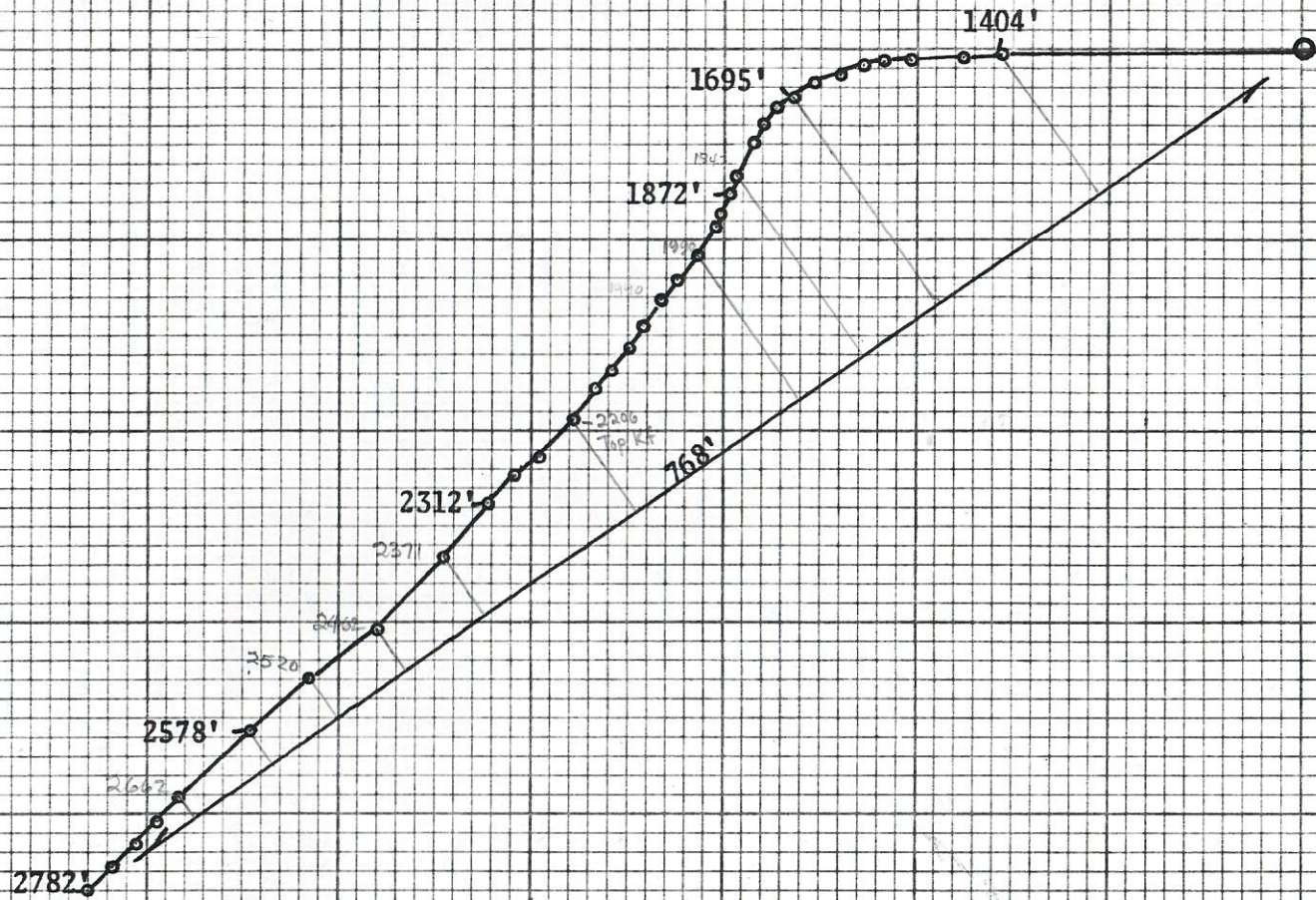
Sample Tons:

Frontier 2187'

Ft. Hays 2408'



00287272



GEOLOGICAL DISCUSSION

The #1 Allen Spaulding was drilled to a total depth of 2812' with gas. Oil and water was encountered in either the Dakota or Lakota. A Schlumberger electric log and dip meter was run but because of hole conditions only a depth to just below the Ft. Hays was reached. Consequently it could not be determined whether the oil and water was encountered in the Dakota or Lakota.

The hole was plugged back and whipstocked to the west. This was the #1A Allen Spaulding hole. A depth of 2840' was reached and it was determined that the hole crossed the crest of the anticline and drilled down the bedding planes on the opposite side.

The well was then plugged back and the Dyna drill put on to drill in a southwesterly direction. The bit drilled off the plug and started a new hole at approximately 1540' in the Niobrara. Three runs were made with the Dyna drill before a satisfactory angle and direction were achieved. (Drift $24 \frac{3}{4}^{\circ}$ S 37° W).

The Dyna drill was pulled and five 4" drill collars and reamer were run. This assembly allowed the hole to drift to an angle of $33 \frac{3}{4}^{\circ}$ S 38° W.

The light collars were pulled at 2214' and regular drill collars with two reamers were run in and a straight direction and drift angle was established.

At 2633' the reamers were removed and the hole began drifting north and more vertical. From 37° S $44 \frac{1}{2}$ W to $35 \frac{3}{4}^{\circ}$ S 46 W at a depth of 2782'. This indicated the hole had crossed the crest of the anticline and again was drilling down the west side.

It was decided to plug and abandon the hole at a depth of 2796'.

