

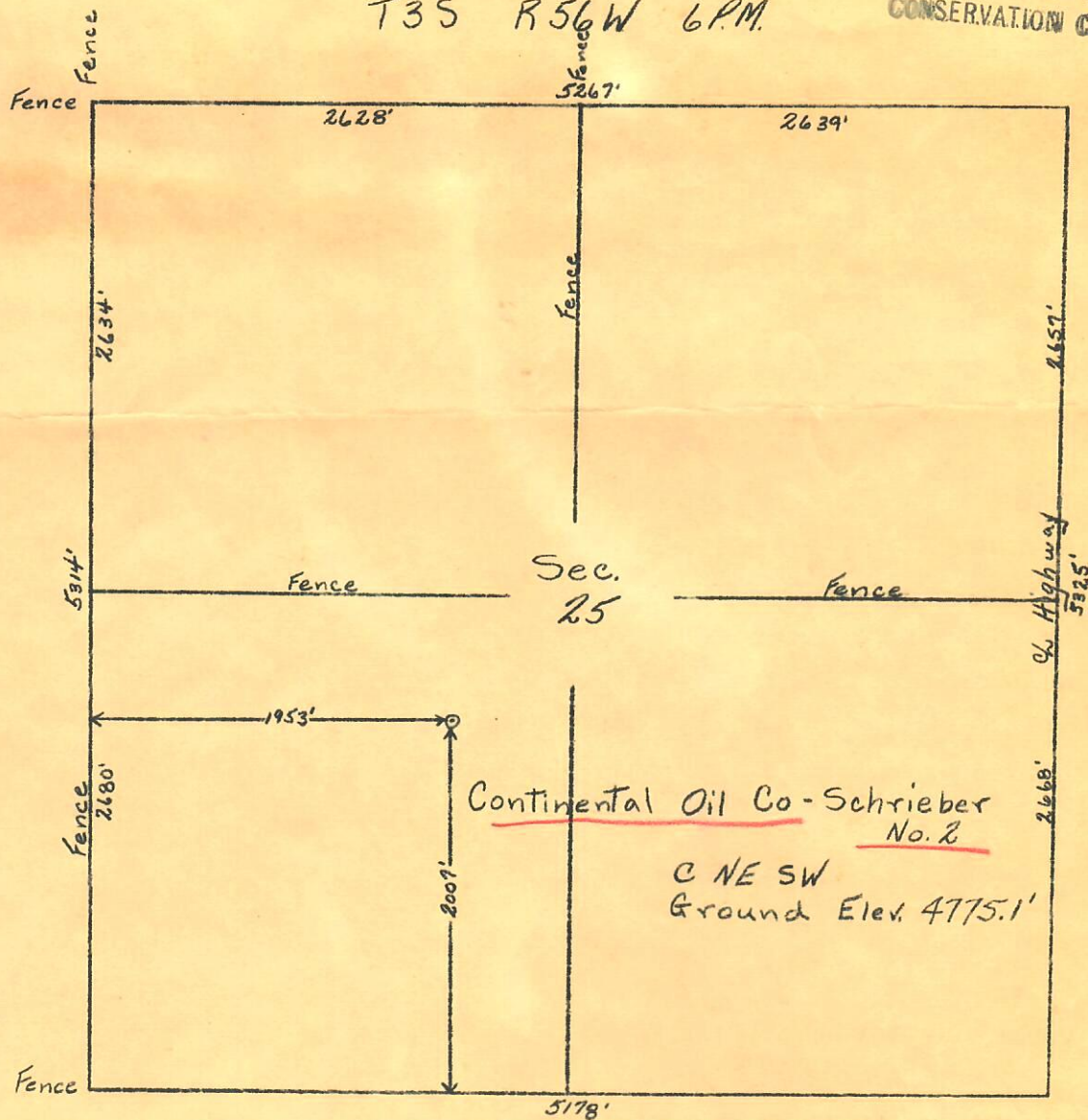


CERTIFICATE OF SURVEY
for
Continental Oil Co.

RECEIVED
DEC 15 1955

OIL & GAS
CONSERVATION COMMISSION

T3S R56W 6PM.



Scale 1"=1000'

I hereby certify that the above plat is an accurate representation of a correct survey showing the location of Continental Oil Co.- Schrieber No. 2 Oilwell in NE 1/4 SW 1/4 Sec. 25 T3S R56W 6PM. The elevation of the ground at the stake is 4775.1 after it was moved south on account of terrain.

Fort Morgan, Colorado
December 8, 1955

Cecil J. Osborne
Registered Professional Engineer
State of Colorado.

